

# SRC ENERGY

Location: COLORADO Slot: SLOT#22 BOST FARM 16N-8B-L (2507'FSL & 1096'FWL, SEC.07)  
Field: WELD COUNTY (NAD83, TRUE NORTH) Well: BOST FARM 16N-8B-L  
Facility: SEC.07-T05N-R66W Wellbore: BOST FARM 16N-8B-L PWB

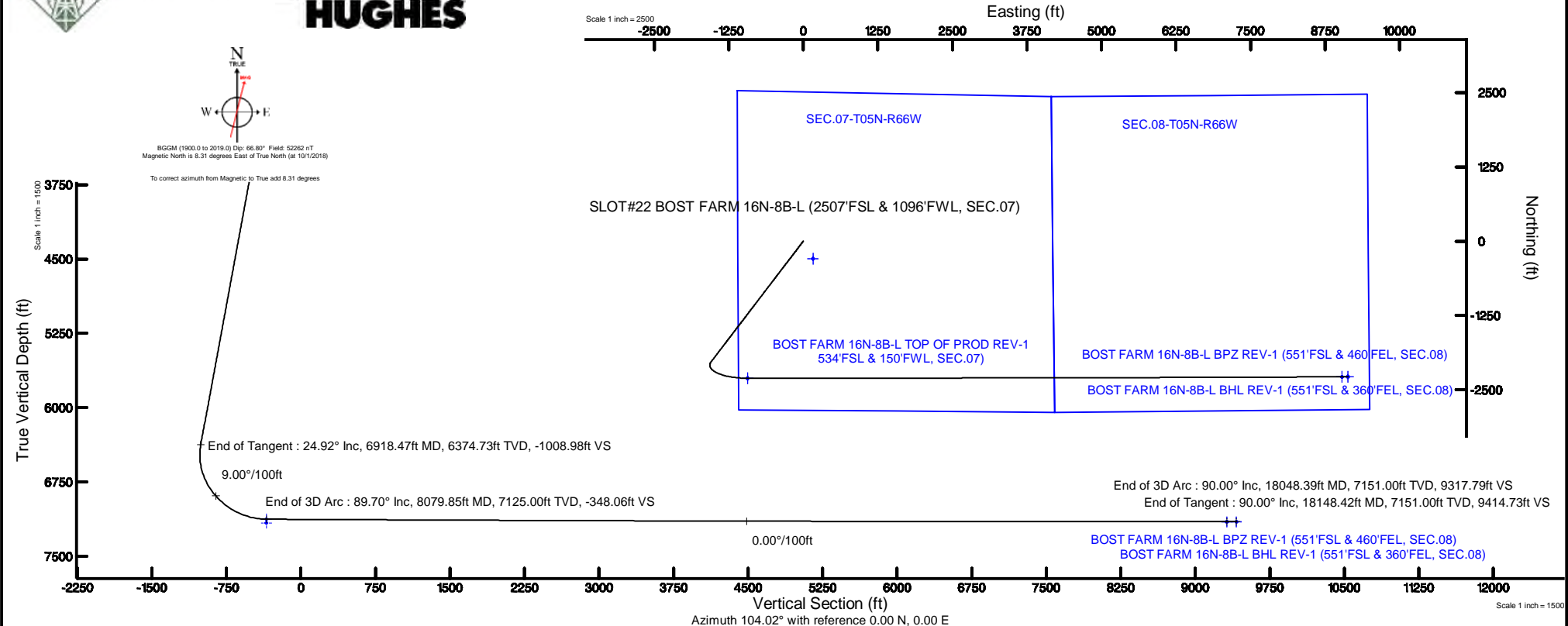
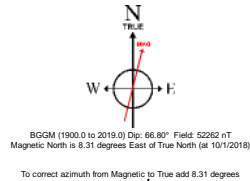
Plot reference wellpath is BOST FARM 16N-8B-L (REV-B.0) PWP	Grid System: NAD83 / Lambert Colorado SP, Northern Zone (501), US feet
True vertical depths are referenced to PROPETRO 12 (4) (RKB)	North Reference: True north
Measured depths are referenced to PROPETRO 12 (4) (RKB)	Scale: True distance
PROPETRO 12 (4) (RKB) to Mean Sea Level: 4879 feet	Depths are in feet
Mean Sea Level to Mud line (At Slot: SLOT#22 BOST FARM 16N-8B-L (2507'FSL & 1096'FWL, SEC.07)): 0 feet	Created by: robiate01 on 2018-10-18
Coordinates are in feet referenced to Slot	Database: WA DENVER

## Location Information

Facility Name				Grid East (US ft)	Grid North (US ft)	Latitude	Longitude
SEC.07-T05N-R66W				3187161.591	1394309.789	40°24'49.806"N	104°49'40.249"W
Slot	Local N (ft)	Local E (ft)	Grid East (US ft)	Grid North (US ft)	Latitude	Longitude	
SLOT#22 BOST FARM 16N-8B-L (2507'FSL & 1096'FWL, SEC.07)	295.09	-162.92	3186996.450	1394603.627	40°24'52.722"N	104°49'42.355"W	
PROPETRO 12 (4) (RKB) to Mud line (N Slot: SLOT#22 BOST FARM 16N-8B-L (2507'FSL & 1096'FWL, SEC.07))						4879ft	
Mean Sea Level to Mud line (N Slot: SLOT#22 BOST FARM 16N-8B-L (2507'FSL & 1096'FWL, SEC.07))						0ft	
PROPETRO 12 (4) (RKB) to Mean Sea Level						4879ft	

## Survey Program

Start MD (ft)	End MD (ft)	Tool	Model	Log Name/Comment	Wellbore
4.00	1750.00	BH NavTrak	BH NavTrak (Standard)		BOST FARM 16N-8B-L PWB
1750.00	18148.42	BH AutoTrak Curve	BH AutoTrak Curve (MagCAD+IFR1, Short spacing)		BOST FARM 16N-8B-L PWB



## Targets

Name	MD (ft)	TVD (ft)	Local N (ft)	Local E (ft)	Grid East (US ft)	Grid North (US ft)	Latitude	Longitude
SEC.07-T05N-R66W		3.00	-295.09	162.92	3187161.59	1394309.79	40°24'49.806"N	104°49'40.249"W
SEC.08-T05N-R66W		3.00	-295.09	162.92	3187161.59	1394309.79	40°24'49.806"N	104°49'40.249"W
BOST FARM 16N-8B-L TOP OF PROD REV-1 (534'FSL & 150'FWL, SEC.07)	8079.85	7125.00	-2304.67	-934.08	3186079.89	1392292.05	40°24'29.948"N	104°49'54.430"W
BOST FARM 16N-8B-L BHL REV-1 (551'FSL & 360'FEL, SEC.08)	18148.42	7151.00	-2280.33	9134.40	3196147.48	1392392.64	40°24'30.172"N	104°47'44.275"W
BOST FARM 16N-8B-L BPZ REV-1 (551'FSL & 460'FEL, SEC.08)	18048.39	7151.00	-2280.77	9034.38	3196047.47	1392391.44	40°24'30.168"N	104°47'45.568"W
BOST FARM 16N-8B-L BHL ON PLAT (551'FSL & 360'FEL, SEC.08)		7153.00	-2280.37	9134.39	3196147.47	1392392.60	40°24'30.172"N	104°47'44.275"W
BOST FARM 16N-8B-L BPZ ON PLAT (551'FSL & 460'FEL, SEC.08)		7153.00	-2280.77	9034.41	3196047.50	1392391.44	40°24'30.168"N	104°47'45.568"W
BOST FARM 16N-8B-L TOP OF PROD ON PLAT (534'FSL & 150'FWL, SEC.07)		7163.00	-2304.62	-934.05	3186079.92	1392292.09	40°24'29.948"N	104°49'54.430"W

## Well Profile Data

Design Comment	MD (ft)	Inc (°)	Az (°)	TVD (ft)	Local N (ft)	Local E (ft)	DLS (°/100ft)	VS (ft)
Tie On	4.00	0.000	217.311	4.00	0.00	0.00	0.00	0.00
End of Tangent	250.00	0.000	217.311	250.00	0.00	0.00	0.00	0.00
End of Build	1495.98	24.920	217.311	1457.07	-212.13	-161.67	2.00	-105.47
End of Tangent	6918.47	24.920	217.311	6374.73	-2029.32	-1546.55	0.00	-1008.98
End of 3D Arc	8079.85	89.701	89.978	7125.00	-2304.67	-934.08	9.00	-348.06
End of 3D Arc	18048.39	90.000	89.747	7151.00	-2280.77	9034.38	0.00	9317.79
End of Tangent	18148.42	90.000	89.747	7151.00	-2280.33	9134.40	0.00	9414.73