



# Job Summary

Ticket Number	Ticket Date
TN# BCO-2008-0029	8/20/2020

COUNTY	COMPANY	API Number
ARAPAHOE (CO)	CRESTONE PEAK RESOURCES	0500506203
WELL NAME	RIG	JOB TYPE
AMOCO-WESTAN-CAVANAUGH 1	Capstar	CM-INTER. LINER
SURFACE WELL LOCATION	CJES Field Supervisor	CUSTOMER REP
39.722964 -104.56702	Jeff Kopp	Derek Dupee

EMPLOYEES		
Garrick W		
Daniel		

WELL PROFILE			
Max Treating Pressure (psi):	2000	Bottom Hole Static Temperature (°F):	
Bottom Hole Circulating Temperature (°F):		Well Type:	

## Open Hole

1	Size (in)	TMD From (ft)	TMD to (ft)	TVD From (Ft)	TVD to (Ft)
	10.5	214	640		
2	Size (in)	TMD From (ft)	TMD to (ft)	TVD From (Ft)	TVD to (Ft)

## Casing/Tubing/Drill Pipe

Type	Size (in)	Weight (lb/ft)	Grade	TMD From (ft)	TMD to (ft)	TVD From (Ft)	TVD to (Ft)
Surface	8 5/8	24		0	214		

Type	Size (in)	Weight (lb/ft)	Grade	TMD From (ft)	TMD to (ft)	TVD From (Ft)	TVD to (Ft)
Production	7	26		0	640		

Type	Size (in)	Weight (lb/ft)	Grade	TMD From (ft)	TMD to (ft)	TVD From (Ft)	TVD to (Ft)

## CEMENT DATA

Stage 1:	From Depth (ft):	N/A	To Depth (ft):	640
Type: Surface Plug	Volume (sacks):	450	Volume (bbls):	92

Cement & Additives:	Density (ppg)	Yield (ft^3/sk)	Water Req.
	15.8	1.15	4.98

Stage 2:	From Depth (ft):		To Depth (ft):	
Type:	Volume (sacks):		Volume (bbls):	

Cement & Additives:	Density (ppg)	Yield (ft^3/sk)	Water Req.

Stage 3:	From Depth (ft):		To Depth (ft):	
Type:	Volume (sacks):		Volume (bbls):	

Cement & Additives:	Density (ppg)	Yield (ft^3/sk)	Water Req.

Stage 4:	From Depth (ft):		To Depth (ft):	
Type:	Volume (sacks):		Volume (bbls):	

Cement & Additives:	Density (ppg)	Yield (ft^3/sk)	Water Req.

## SUMMARY

Preflushes:	15 bbls of Fresh Water	Calculated Displacement (bbl):	22.9	Stage 1	Stage 2
	bbls of	Actual Displacement (bbl):	23		
	bbls of				
Total Preflush/Spacer Volume (bbl):	15	Plug Bump (Y/N):	Y	Bump Pressure (psi):	1223
Total Slurry Volume (bbl):	92	Lost Returns (Y/N):	N	(if Y, when)	
Total Fluid Pumped	107				
Returns to Surface:	Cement	0 bbls			

Job Notes (fluids pumped / procedures / tools / etc.):

No cement back to surface. Floats held and got 1/8 of a bbl back from checking floats. Full returns the entire job.

Thank You For Using

NexTier Completion Solutions

Customer Representative Signature: \_\_\_\_\_



# Job Summary

Ticket Number  
TN# **BCO-2008-0035** Ticket Date  
**8/23/2020**

COUNTY	COMPANY	API Number
<b>ARAPAHOE (CO)</b>	<b>CRESTONE PEAK RESOURCES</b>	<b>0500506203</b>
WELL NAME	RIG	JOB TYPE
<b>AMOCO-WESTAN-CAVANAUGH 1</b>	<b>Capstar</b>	<b>CM-KICKOFF PLUG</b>
SURFACE WELL LOCATION	CJES Field Supervisor	CUSTOMER REP
<b>39.722964 -104.56702</b>	<b>Eduardo Chapa</b>	<b>Derek Dupee</b>

EMPLOYEES		
EDUARDO CHAPA	SERGIO SERNA	
TONY		
JOSE GALLEGOS		

WELL PROFILE			
Max Treating Pressure (psi):		Bottom Hole Static Temperature (°F):	
Bottom Hole Circulating Temperature (°F):		Well Type:	

## Open Hole

1	Size (in)	TMD From (ft)	TMD to (ft)	TVD From (ft)	TVD to (ft)
	7.875	1800			
2	Size (in)	TMD From (ft)	TMD to (ft)	TVD From (ft)	TVD to (ft)

## Casing/Tubing/Drill Pipe

Type	Size (in)	Weight (lb/ft)	Grade	TMD From (ft)	TMD to (ft)	TVD From (ft)	TVD to (ft)
Surface							
Type	Size (in)	Weight (lb/ft)	Grade	TMD From (ft)	TMD to (ft)	TVD From (ft)	TVD to (ft)
Type	Size (in)	Weight (lb/ft)	Grade	TMD From (ft)	TMD to (ft)	TVD From (ft)	TVD to (ft)

## CEMENT DATA

Stage 1:	From Depth (ft):	1800	To Depth (ft):	1567	
	Type: <b>BALANCE PLUG</b>				
	Volume (sacks):	80	Volume (bbls):	14	
Cement & Additives:			Density (ppg)	Yield (ft³/sk)	Water Req.
100% NCM-914+ 0.5% NDS-415 + 1% NRT-210			17	0.99	3.78

Stage 2:	From Depth (ft):	<div></div>	To Depth (ft):	<div></div>	
Type:	Volume (sacks):	<div></div>	Volume (bbls):	<div></div>	
Cement & Additives:			Density (ppg)	Yield (ft³/sk)	Water Req.

Stage 3:	From Depth (ft):		To Depth (ft):		
Type:	Volume (sacks):		Volume (bbls):		
Cement & Additives:			Density (ppg)	Yield (ft³/sk)	Water Req.

Stage 4:	From Depth (ft):	<input type="text"/>	To Depth (ft):	<input type="text"/>	
	Type:				
	Volume (sacks):	<input type="text"/>	Volume (bbls):	<input type="text"/>	
Cement & Additives:			Density (ppg)	Yield (ft³/sk)	Water Req.

## SUMMARY

Preflushes:	20 bbls of <b>SAPP</b>	Calculated Displacement (bbl):	17	Stage 1	Stage 2
	5 bbls of <b>Fresh Water</b>	Actual Displacement (bbl):	17		
	bbls of				
Total Preflush/Spacer Volume (bbl):		Plug Bump (Y/N):		Bump Pressure (psi):	
Total Slurry Volume (bbl):		Lost Returns (Y/N):		(if Y, when)	
Total Fluid Pumped					
Returns to Surface:					

Job Notes (fluids pumped / procedures / tools / etc.):

BALANCE PLUG TOP OF CMT 1567 FT PUMP 20 BBLS SAPP SPACER FOLLOW BY 5 BBLS F/WATER AND 14 BBLS OF CMT DISPLACEMENT 17 BBLS OF FRESH WATER END OF JOB

Customer Representative Signature:

Thank You For Using  
NexTier Completion Solutions





Client  
Ticket No.  
Location  
Comments

CRESTONE PEAK  
20080035

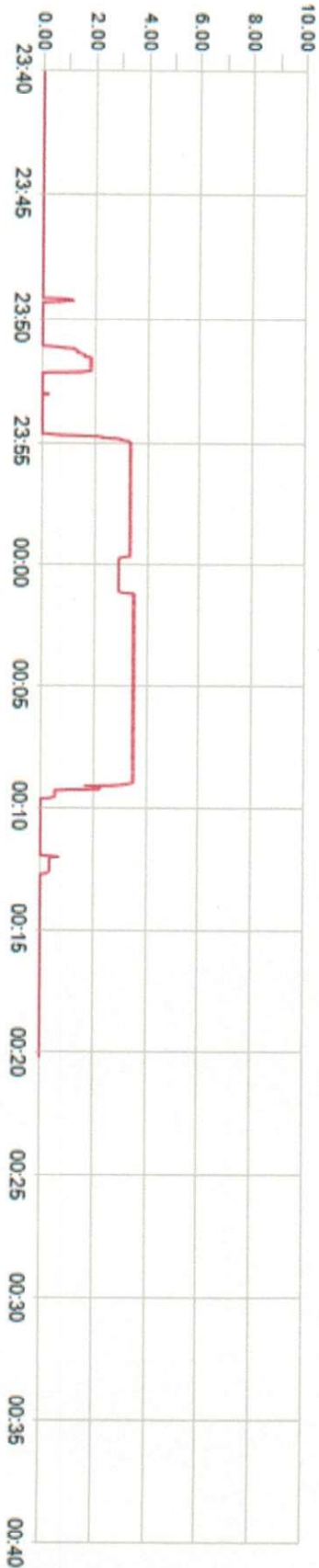
Client Rep  
Well Name  
Job Type

DEREK DUPEE  
MOCO-WESTAN-CAVANAUGH  
Plugback Production

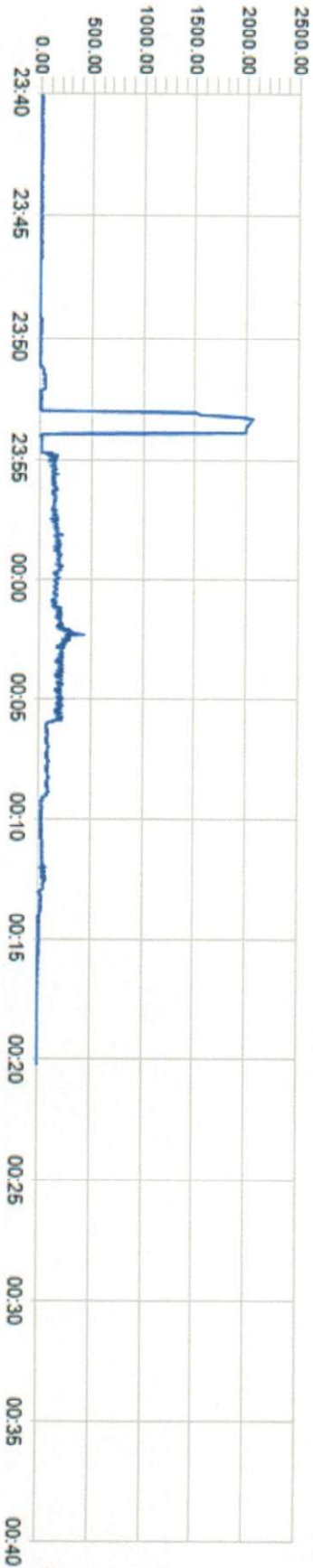
Supervisor  
Unit No.  
Service District  
Job Date

EDUARDO CHAPA  
445070  
BRIGHTON  
08/22/2020

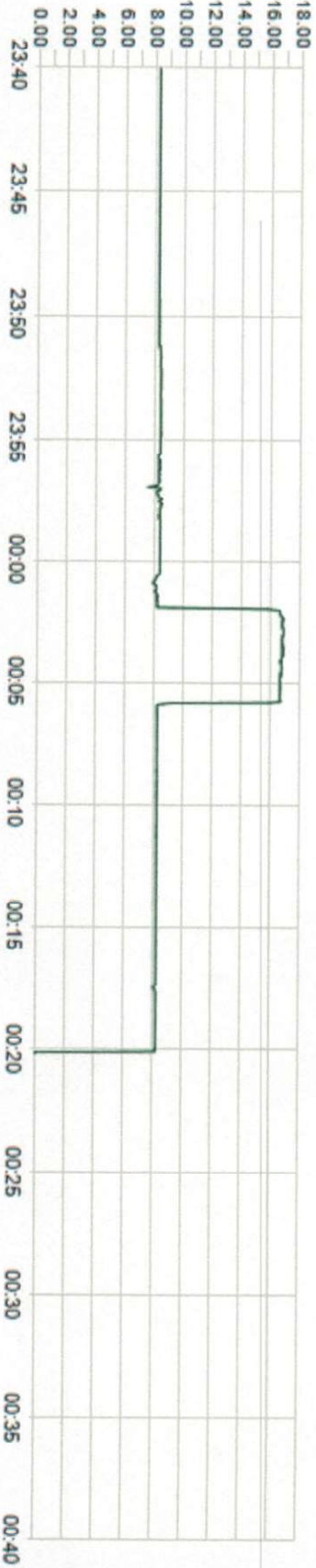
Unit 445070 Rate Total  
(bpm)



Unit 445070 Pump  
Pressure  
(psi)



Unit 445070 Density  
(lb/gal)



<b>NEXTIER</b>		<b>Job Summary</b>		Ticket Number	Ticket Date
COUNTY		COMPANY	TN#	BCO-2009-0003	9/1/2020
ARAPAHOE (CO)		CRESTONE PEAK RESOURCES		API Number	
				0500506203	
WELL NAME		RIG	JOB TYPE		
AMOCO-WESTAN-CAVANAUGH 1		Capstar 312	CM-P2A-PERM.		
SURFACE WELL LOCATION		CJES Field Supervisor	CUSTOMER REP		
39.722964 -104.56702		EDUARDO CHAPA	Derek Dupee		
EMPLOYEES					
EDUARDO CHAPA		AJ			
WINSTON		JOSE GALLEGOS			
JIMMY					
WELL PROFILE					
Max Treating Pressure (psi):				Bottom Hole Static Temperature (°F):	
Bottom Hole Circulating Temperature (°F):				Well Type:	

Open Hole

	Size (in)	TMD From (ft)	TMD to (ft)	TVD From (ft)	TVD to (ft)
1	8.5	7400	3200		
2	10.5	3200	214		

Casing/Tubing/Drill Pipe

Type	Size (in)	Weight (lb/ft)	Grade	TMD From (ft)	TMD to (ft)	TVD From (ft)	TVD to (ft)
SURFACE	8 5/8	24	J-55	214	0		
SURFACE	7	26	J-55	640	0		

### CEMENT DATA

**Stage 1:** From Depth (ft): 7235 To Depth (ft): 6677  
Type: **Balance Plug**  
Volume (sacks): 145 Volume (bbls): 39

Cement & Additives:	Density (ppg)	Yield (ft³/sk)	Water Req.
100%NCM-914+0.5%NDS-415+35.0%NWT-766+0.2% NRT-213+0.2%NTC-704	15.8	1.52	6.19

**Stage 2:** From Depth (ft): 3287 To Depth (ft): 3007  
Type: **BALANCE PLUG**  
Volume (sacks): 115 Volume (bbls): 23.5

Cement & Additives:	Density (ppg)	Yield (ft³/sk)	Water Req.
100% NCM-914+ 2.0% NAC-110	15.8	1.15	5.00

**Stage 3:** From Depth (ft): 1985 To Depth (ft): 1448  
Type: **BALANCE PLUG**  
Volume (sacks): 350 Volume (bbls): 75

Cement & Additives:	Density (ppg)	Yield (ft³/sk)	Water Req.
100% NCM-914+2% NAC-110+4.0%NAC-101+ 0.4% NFL-522	15.8	1.21	5.13

**Stage 4:** From Depth (ft): 1429 To Depth (ft): 690  
Type: **BALANCE PLUG**  
Volume (sacks): 405 Volume (bbls): 83

Cement & Additives:	Density (ppg)	Yield (ft³/sk)	Water Req.
100% NCM-914+2% NAC-110	15.8	1.15	5.00

### SUMMARY

	Stage 1	Stage 2
Preflushes:		
20 bbls of Fresh Water	71	32
20 bbls of Fresh Water	71	32
20 bbls of Fresh Water		
Total Preflush/Spacer Volume (bbl):		
Total Slurry Volume (bbl):		
Total Fluid Pumped		
Returns to Surface:		

Calculated Displacement (bbl): 71  
Actual Displacement (bbl): 71

Plug Bump (Y/N):  
Lost Returns (Y/N): (if Y, when)

Bump Pressure (psi):

Job Notes (fluids pumped / procedures / tools / etc.):

FIRS PLUG PUMP 20 BBLs F/W 39 BBLs OF CMT @15.8 DISPLACEMENT 4 BBLs F/W AND 67 BBLs OF MUD SECOND PLUG PUMP 20 BBLs F/W 23.5 BBLs OF CMT @15.8 DISPLACEMENT 2 BBLs F/W AND 30 BBLs OF MUD. THRID PLUG PUMP 20 BBLs F/W 75 BBLs OF CMT @15.8 DISPLACEMENT 2 BBLs F/W AND 11 BBLs OF MUD. FOURTH PLUG 20 BBLs F/W 14 BBLs OF CMT @15.8 DISPLACEMENT 4 BBLs F/W

Customer Representative Signature: \_\_\_\_\_

Thank You For Using  
NexTier Completion Solutions



# Job Summary

Ticket Number	Ticket Date
TN# <b>BCO-2008-0034</b>	<b>9/1/2020</b>

COUNTY	COMPANY	API Number
<b>ARAPAHOE (CO)</b>	<b>CRESTONE PEAK RESOURCES</b>	<b>0500506203</b>
WELL NAME	RIG	JOB TYPE
<b>AMOCO-WESTAN-CAVANAUGH 1</b>	<b>Capstar</b>	<b>CM-P2A-PERM.</b>
SURFACE WELL LOCATION	CJES Field Supervisor	CUSTOMER REP
<b>39.722964 -104.56702</b>	<b>EDUARDO CHAPA</b>	<b>Derek Dupee</b>

EMPLOYEES		
<i>EDUARDO CHAPA</i>	<i>AJ</i>	
<i>WINSTON</i>	<i>JOSE GALLEGOS</i>	
<i>JIMMY</i>		

WELL PROFILE			
Max Treating Pressure (psi):		Bottom Hole Static Temperature (°F):	
Bottom Hole Circulating Temperature (°F):		Well Type:	

## Open Hole

1	Size (in)	TMD From (ft)	TMD to (ft)	TVD From (Ft)	TVD to (Ft)
	8.5	7400	3200		
2	Size (in)	TMD From (ft)	TMD to (ft)	TVD From (Ft)	TVD to (Ft)
	10.5	3200	214		

## Casing/Tubing/Drill Pipe

Type	Size (in)	Weight (lb/ft)	Grade	TMD From (ft)	TMD to (ft)	TVD From (Ft)	TVD to (Ft)
SURFACE	8 5/8	24	J-55	214	0		
Type	Size (in)	Weight (lb/ft)	Grade	TMD From (ft)	TMD to (ft)	TVD From (Ft)	TVD to (Ft)
SURFACE	7	26	J-55	640	0		
Type	Size (in)	Weight (lb/ft)	Grade	TMD From (ft)	TMD to (ft)	TVD From (Ft)	TVD to (Ft)

## CEMENT DATA

Stage 5:	From Depth (ft):	690	To Depth (ft):	643
Type: <b>BALANCE PLUG</b>	Volume (sacks):	70	Volume (bbls):	14

Cement & Additives:	Density (ppg)	Yield (ft³/sk)	Water Req.
100% NCM-914+ 2.0% NAC-110	15.8	1.15	5.00

Stage 6:	From Depth (ft):	643	To Depth (ft):	375
Type: <b>BALANCE PLUG</b>	Volume (sacks):	54	Volume (bbls):	11

Cement & Additives:	Density (ppg)	Yield (ft³/sk)	Water Req.
100% NCM-914+ 2.0% NAC-110	15.8	1.15	5.00

Stage 3:	From Depth (ft):	313	To Depth (ft):	0
Type: <b>SQUEEZE TO SURFACE</b>	Volume (sacks):	118	Volume (bbls):	24

Cement & Additives:	Density (ppg)	Yield (ft³/sk)	Water Req.
CLASS G	15.8	1.15	5.00

Stage 4:	From Depth (ft):	313	To Depth (ft):	0
Type: <b>TOP OFF</b>	Volume (sacks):	88	Volume (bbls):	18

Cement & Additives:	Density (ppg)	Yield (ft³/sk)	Water Req.
100% NCM-914+2% NAC-110	15.8	1.15	5.00

## SUMMARY

Preflushes:	20 bbls of Fresh Water	Calculated Displacement (bbl):	6	Stage 1	Stage 2
	10 bbls of Fresh Water	Actual Displacement (bbl):	6		4
	20 bbls of Fresh Water				4
Total Preflush/Spacer Volume (bbl):		Plug Bump (Y/N):		Bump Pressure (psi):	
Total Slurry Volume (bbl):		Lost Returns (Y/N):		(if Y, when)	
Total Fluid Pumped					
Returns to Surface:					

Job Notes (fluids pumped / procedures / tools / etc.):

FIFTH PLUG PUMP 20 BBLS F/W 14 BBLS OF CMT @15.8 DISPLACEMENT 4 BBLS F/W. SIXTH PLUG PUMP 10 BBLS F/W 11 BBLS OF CMT @15.8 DISPLACEMENT 4 BBLS F/W. SQUEEZE BACKSIDE PUMP 20 BBLS F/W 24 BBLS CMT END CALL IT GOOD. TOP OFF CASING 18 BBLS OF CEMENT GOT CEMENT TO SURFACE CALL IT GOOD.

Customer Representative Signature: \_\_\_\_\_

Thank You For Using

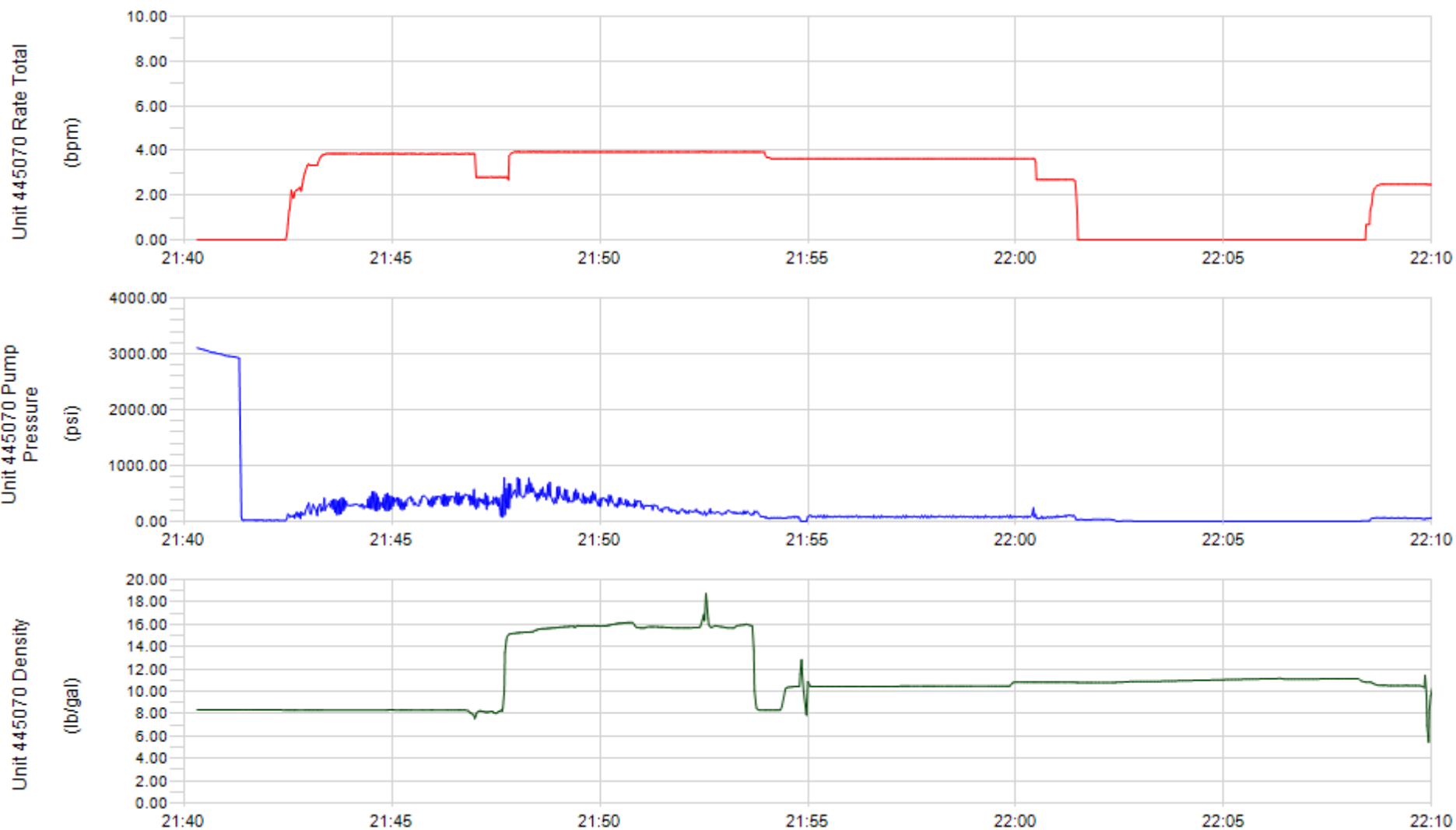
NexTier Completion Solutions



Client CRESTON PEAK  
Ticket No. 20080034  
Location  
Comments

Client Rep  
Well Name MOCO WESTON CAVANAUGH  
Job Type Abandonment Plugs

Supervisor EDUARDO CHAPA  
Unit No. 445070  
Service District BRIGHTON  
Job Date 08/30/2020





Client CRESTONE PEAK  
Ticket No. 20080034  
Location  
Comments

Client Rep  
Well Name MOCO-WESTAN-CAVANAUGH  
Job Type Abandonment Plugs

Supervisor EDUARDO CHAPA  
Unit No. 445070  
Service District BRIGHTON  
Job Date 08/30/2020



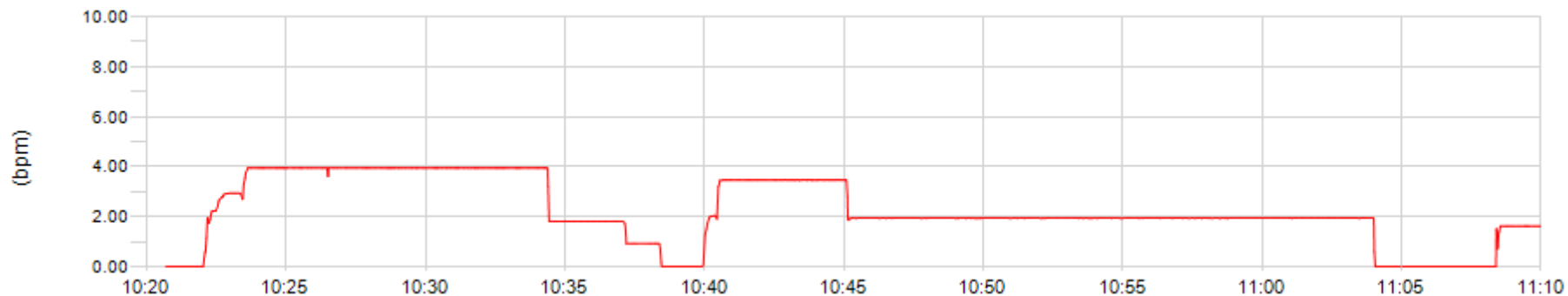


Client CRESTONE PEAK  
Ticket No. 20080034  
Location  
Comments

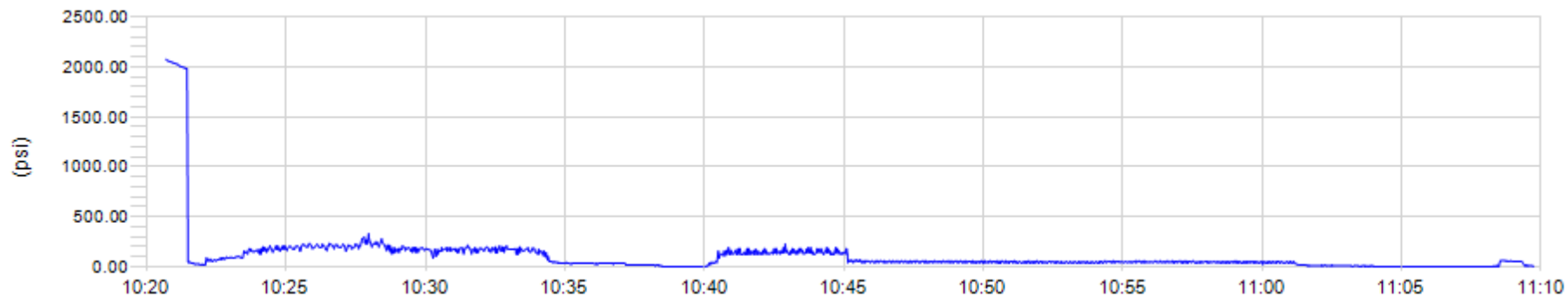
Client Rep  
Well Name MOCO-WESTAN-CAVANAUGH  
Job Type Abandonment Plugs

Supervisor EDUARDO CHAPA  
Unit No. 445070  
Service District BRIGHTON  
Job Date 08/31/2020

Unit 445070 Rate Total



Unit 445070 Pump Pressure



Unit 445070 Density







Client CRESTONE PEAK  
Ticket No. 20080034  
Location BRIGHTON  
Comments

Client Rep  
Well Name MOCO-WESTAN-CAVANAUGH  
Job Type Abandonment Plugs

Supervisor EDUARDO CHAPA  
Unit No. 445070  
Service District  
Job Date 08/31/2020



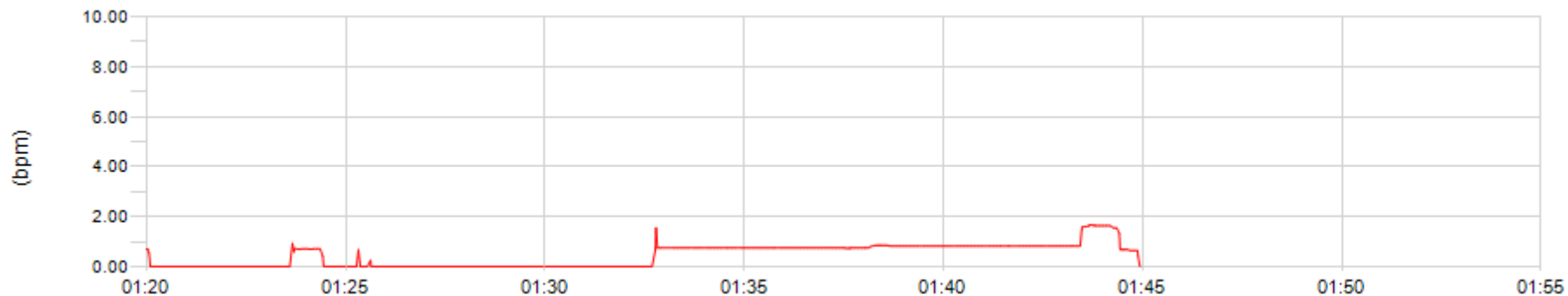


Client CRESTONE PEAK  
Ticket No. 20080034  
Location BRIGHTON  
Comments

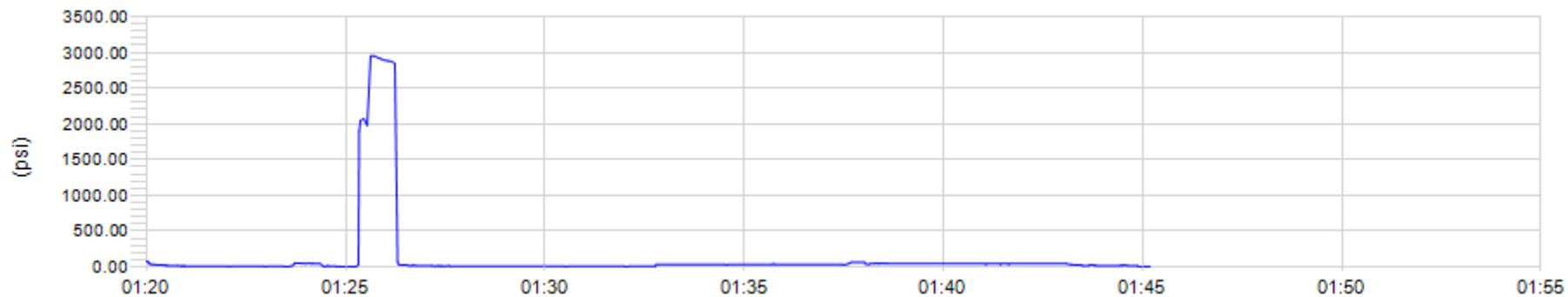
Client Rep  
Well Name MOCO-WESTAN-CAVANAUGH  
Job Type Abandonment Plugs

Supervisor EDUARDO CHAPA  
Unit No. 445070  
Service District BRIGHTON  
Job Date 09/01/2020

Unit 445070 Rate Total



Unit 445070 Pump Pressure



Unit 445070 Density





Client CRESTONE PEAK  
Ticket No. 20080034  
Location  
Comments

Client Rep  
Well Name MOCO-WESTAN-CAVANAUGH  
Job Type Abandonment Plugs

Supervisor EDUARDO CHAPA  
Unit No. 445070  
Service District BRIGHTON  
Job Date 09/01/2020

