

T4S, R65W, 6th P.M.

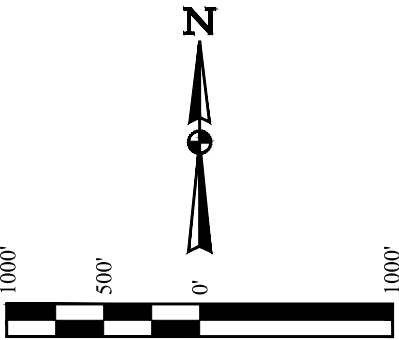
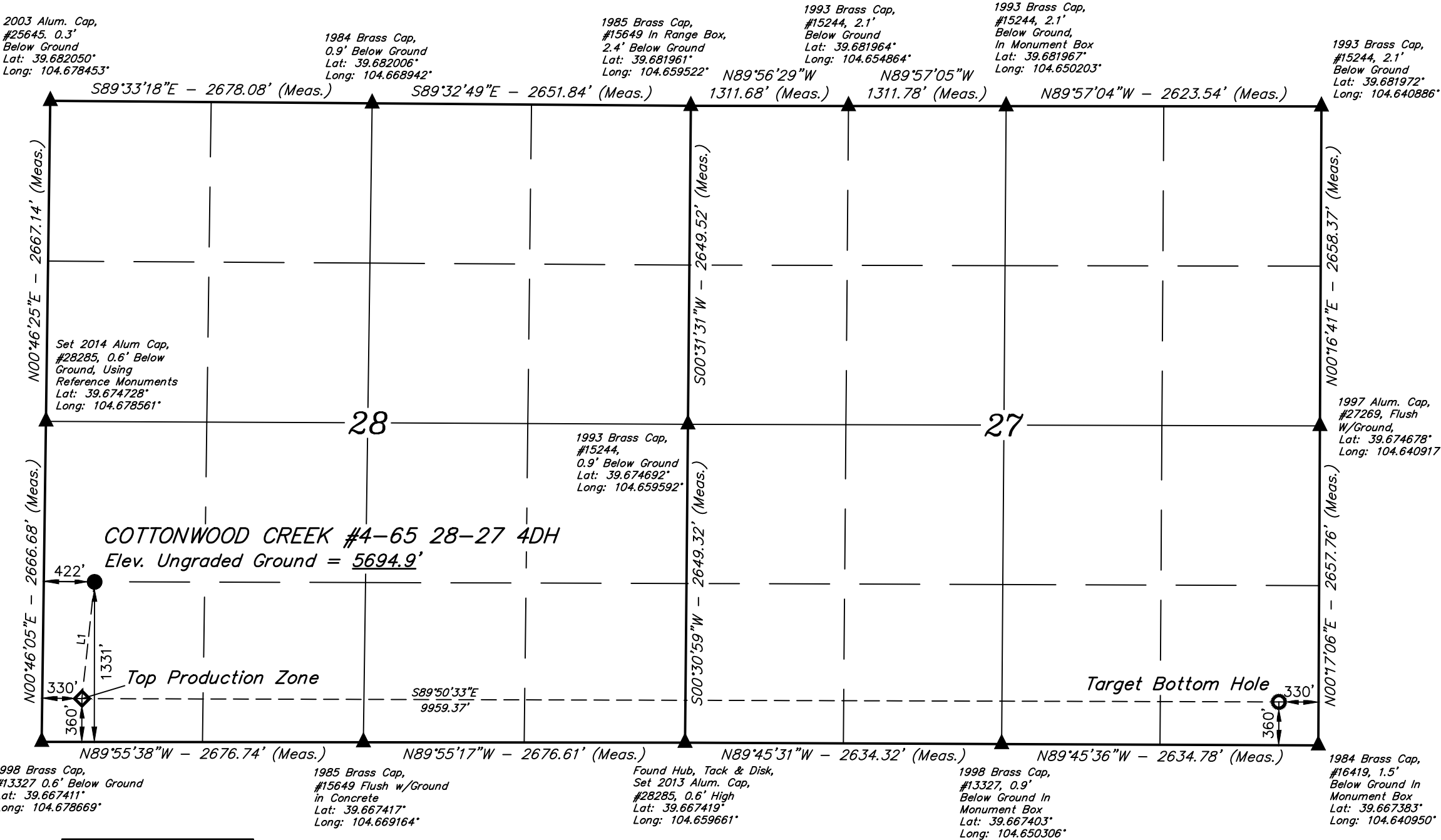
CRESTONE PEAK RESOURCES OPERATING LLC

COTTONWOOD CREEK #4-65 28-27 4DH
SW 1/4 SW 1/4, SECTION 28, T4S, R65W, 6th P.M.
ARAPAHOE COUNTY, COLORADO

BASIS OF BEARINGS

BASIS OF ELEVATION

BENCHMARK 374 LOCATED ON THE SECTION LINE BETWEEN
SECTIONS 12 & 13, T5S, R64W, 6th. P.M., TAKEN FROM 1988
PUBLISHED DATUM BY THE UNITED STATES DEPARTMENT OF
THE INTERIOR, GEOLOGICAL SURVEY AS BEING 6054.61 FEET.



COTTONWOOD CREEK #4-65 28-27 4DH
Elev. Ungraded Ground = 5694.9'

Top Production Zone

Target Bottom Hole

LINE TABLE

| LINE | DIRECTION | LENGTH |
|------|-------------|---------|
| L1 | S06°10'34"W | 976.77' |

NOTE:

Distances referenced
on plat to section lines
are perpendicular.

LEGEND:

- = PROPOSED WELLHEAD.
- = TARGET BOTTOM HOLE.
- ◇ = TOP PRODUCTION ZONE.
- ▲ = SECTION CORNERS LOCATED. (NAD 83)

PDOP = 1.3

REV: 4 05-27-20 C.C. (SHL, TPZ & BHL MOVE,
WELL NAME CHANGE)

| NAD 83 (SURFACE LOCATION) | NAD 83 (TOP PRODUCTION ZONE) | NAD 83 (TARGET BOTTOM HOLE) |
|---|---|---|
| LATITUDE = 39°40'15.84" (39.671066°) | LATITUDE = 39°40'06.24" (39.668401°) | LATITUDE = 39°40'06.14" (39.668373°) |
| LONGITUDE = 104°40'37.62" (104.677118°) | LONGITUDE = 104°40'38.94" (104.677484°) | LONGITUDE = 104°38'31.62" (104.642116°) |
| NAD 27 (SURFACE LOCATION) | NAD 27 (TOP PRODUCTION ZONE) | NAD 27 (TARGET BOTTOM HOLE) |
| LATITUDE = 39°40'15.88" (39.671079°) | LATITUDE = 39°40'06.29" (39.668413°) | LATITUDE = 39°40'06.19" (39.668386°) |
| LONGITUDE = 104°40'35.73" (104.676592°) | LONGITUDE = 104°40'37.05" (104.676958°) | LONGITUDE = 104°38'29.73" (104.641592°) |
| STATE PLANE NAD 83 (CO. CENTRAL) | STATE PLANE NAD 83 (CO. CENTRAL) | STATE PLANE NAD 83 (CO. CENTRAL) |
| N: 1670363.79' E: 3231637.03' | N: 1669391.88' E: 3231542.67' | N: 1669474.05' E: 3241498.73' |
| STATE PLANE NAD 27 (CO. CENTRAL) | STATE PLANE NAD 27 (CO. CENTRAL) | STATE PLANE NAD 27 (CO. CENTRAL) |
| N: 670356.23' E: 2231790.95' | N: 669384.33' E: 2231696.61' | N: 669466.67' E: 2241652.59' |



UELS, LLC
Corporate Office * 85 South 200 East
Vernal, UT 84078 * (435) 789-1017

| | | | |
|-------------|-------------------|----------|------------|
| SURVEYED BY | CHAD MEIERS, O.R. | 04-20-18 | SCALE |
| DRAWN BY | K.B. | 02-09-17 | 1" = 1000' |

WELL LOCATION PLAT

CERTIFICATE

THIS IS TO CERTIFY THAT THE ABOVE PLAT WAS PREPARED FROM FIELD
NOTES OF ACTUAL SURVEYS MADE BY ME OR UNDER MY SUPERVISION,
AND THAT THE SAME ARE TRUE AND CORRECT TO THE BEST OF MY
KNOWLEDGE AND BELIEF.

REGISTERED LAND SURVEYOR
REGISTRATION NO. 28285
STATE OF COLORADO

05-20