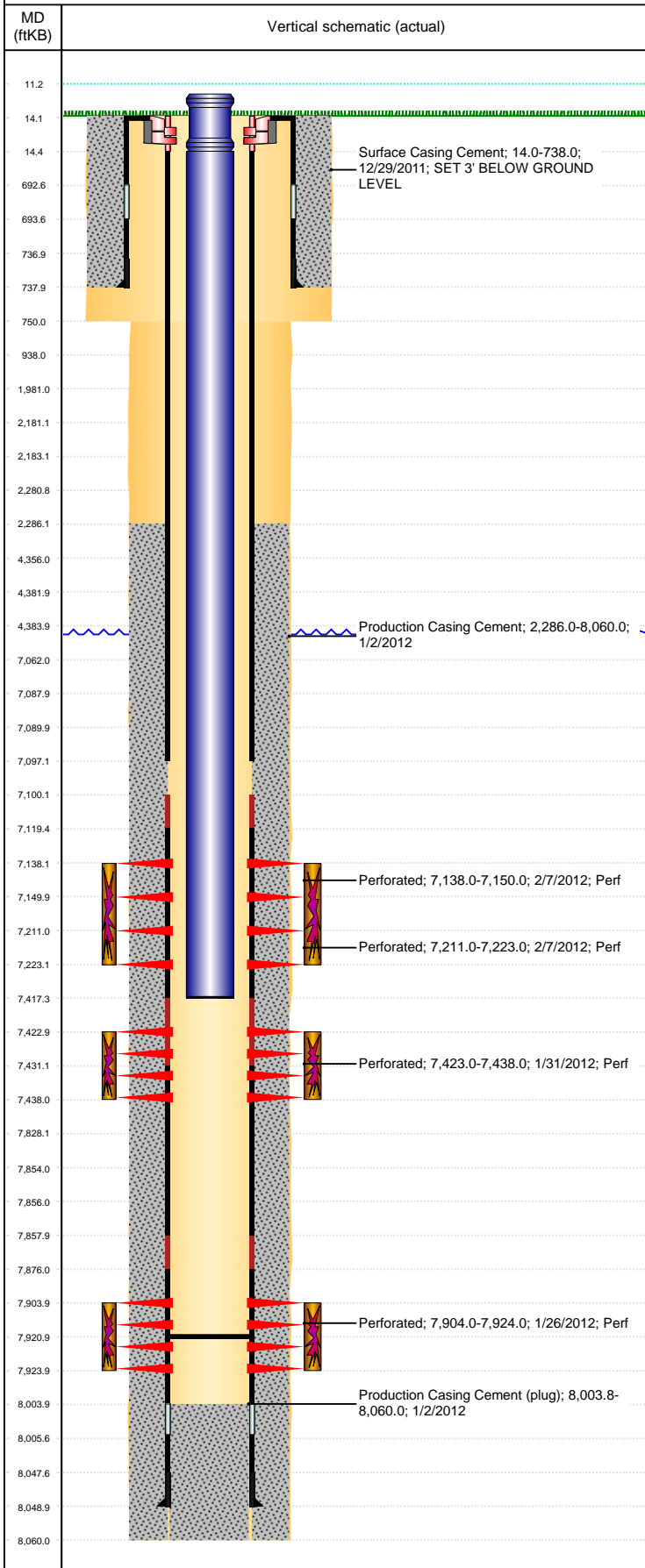


Well Name: RURAL LAND G32-33D

DEVIATED, ORIGINAL HOLE, 9/28/2020 10:23:30 PM



Well Header									
API 05-123-31805		Business Unit DJ BASIN			District 15		Well Config DEVIATED		
KB - GL / MSL (ft... 14.00		Spud Date 12/28/2011		P & A Date		Well Production Status PR			SoRT No
Comment									
Surface Location (Congressional)									
Qtr 3 NW	Qtr 4 SW	Section 32	Twonshp 4	Twonsh... N	Range 65	Rng E/... W	Actual Latitude (°) 40.26691879	Actual Longitude (°) -104.69405187	
Wellbore Sections									
Section Des		Size (in)			Act Top, MD (ftKB)		Act Btm, MD (ftKB)		
SURFACE		12 1/4			14		750		
PRODUCTION		7 7/8			750		8,060		
Casing Strings									
Csg Des		Run Date		OD (in)	Wt/Len (lb/ft)	Grade	Top, MD (ftKB)	MD (ftKB)	
Surface		12/29/2011		8 5/8	24.00	J-55	11.0	738.0	
Production		1/2/2012		4 1/2	11.60	M-80	14.0	8,049.0	
Cement									
Des				Start Date		Top (ftKB)		Btm (ftKB)	
Surface Casing Cement				12/29/2011		14.0		738.0	
Production Casing Cement				1/2/2012		2,286.0		8,060.0	
Zone Statuses									
Zone Name		Status Date	Status	Fluid Type	Job			Prod Method	
NIOBRARA		2/21/2012	PR		DRILLING/COMPLETION - ORIGINAL, 12/26/201...				
CODELL		2/21/2012	PR		DRILLING/COMPLETION - ORIGINAL, 12/26/201...				
J SAND		2/21/2012	PR		DRILLING/COMPLETION - ORIGINAL, 12/26/201...				
Perforation Data									
Linked Zone		Bnch/Stg	Entered Shot Total	Top (ftKB)		Btm (ftKB)		Date	
NIOBRARA, ORIGINAL HOLE		A	24	7,138.00		7,150.00		2/7/2012	
NIOBRARA, ORIGINAL HOLE		B	24	7,211.00		7,223.00		2/7/2012	
CODELL, ORIGINAL HOLE			60	7,423.00		7,438.00		1/31/2012	
J SAND, ORIGINAL HOLE			80	7,904.00		7,924.00		1/26/2012	
Stimulation Intervals									
Zone			Start Date		Top (ftKB)		Btm (ftKB)		
NIOBRARA, ORIGINAL HOLE			2/19/2012		7,138.0		7,223.0		
CODELL, ORIGINAL HOLE			1/31/2012		7,423.0		7,438.0		
J SAND, ORIGINAL HOLE			1/31/2012		7,904.0		7,924.0		
Other In Hole									
Run Date	Des			Make		OD (in)	Top (ftKB)	Btm (ftKB)	
Logs									
Date		Type				Top, MD (ftKB)		Btm, MD (ftKB)	
1/2/2012		SPECTRAL DENSITY/Pe/DSN NEUTRON/SP/ARRAY COMPENSATED TRUE RESISTIVITY				739.0		8,067.0	
1/2/2012		SPECTRAL GAMMA RAY				2,600.0		8,047.0	
1/26/2012		CBL/CCL/GR				1,430.0		7,966.0	
Plug Back Total Depths									
Date		Type		Com				Depth (ftKB)	
1/16/2012		FILL		DEPTH-LOGGER/CBL				7,967.0	
3/10/2012		FILL		DRILL OUT CFTP RETAG @ 7920.84 PLUGGED OFF W/ NITR...				7,920.8	