

VERDAD RESOURCES

**WATTENBERG FIELD
2N-64W-28 GEORGENE PAD
GEORGENE 2833-04H**

Wellbore #1

Plan: Design #3

Standard Planning Report

17 September, 2020

Project: WATTENBERG FIELD
Site: 2N-64W-28 GEORGENE PAD
Well: GEORGENE 2833-04H
Wellbore: Wellbore #1
Design: Design #3

VERDAD RESOURCES

CASING DETAILS

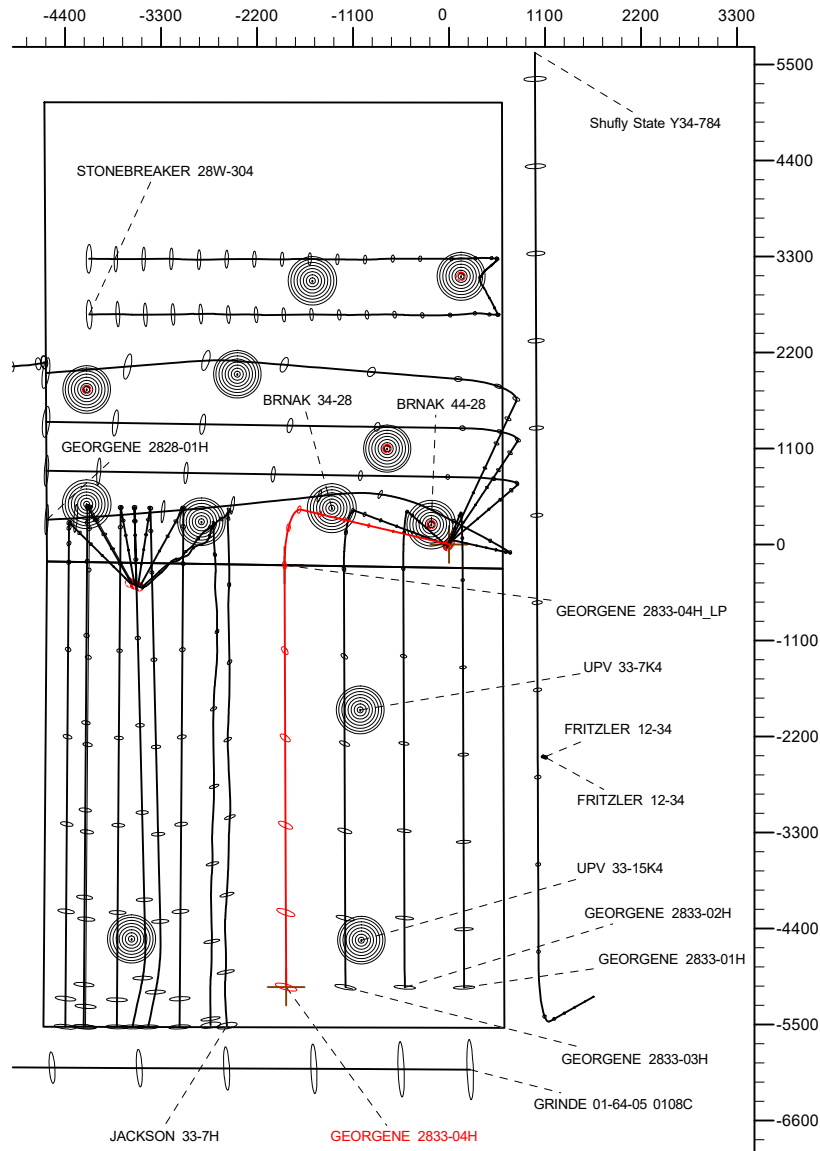
TVD	MD	Name	Size
1700.00	1741.57	9 5/8"	9-5/8

SHL
267' FSL
615' FEL

LP
0' FNL
2500' FEL

BHL
461' FSL
2500' FEL

West(-)/East(+) (2200 usft/in)

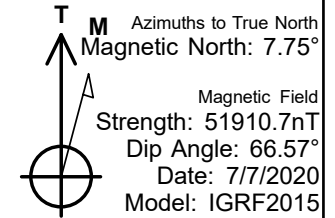
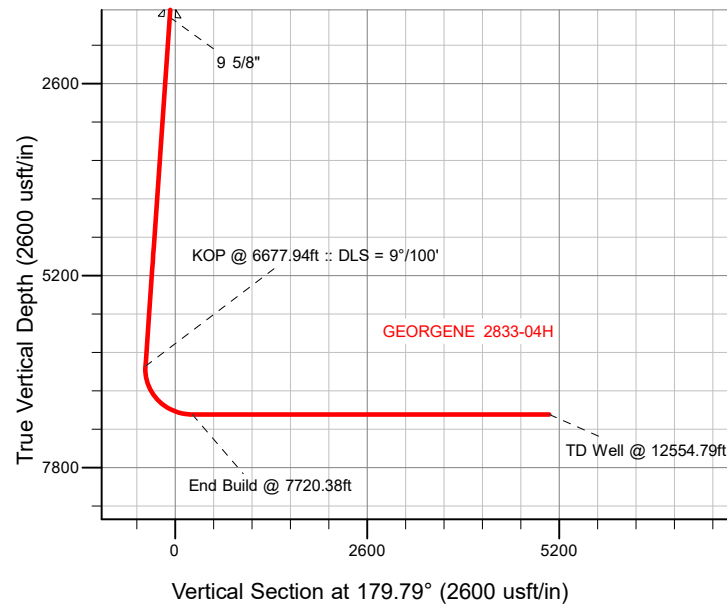


SECTION DETAILS

MD	Inc	Azi	TVD	+N/-S	+E/-W	Dleg	TFace	VSect	Target
0.00	0.00	0.00	0.00	0.00	0.00	0.00	0.00	0.00	
200.00	0.00	0.00	200.00	0.00	0.00	0.00	0.00	0.00	
1035.00	16.70	283.20	1023.23	27.59	-117.64	2.00	283.20	-28.02	
6677.94	16.70	283.20	6428.16	397.88	-1696.35	0.00	0.00	-404.09	
7720.38	90.00	179.79	7080.00	-238.01	-1884.31	9.00	-102.86	231.10	
12554.79	90.00	179.79	7080.00	-5072.38	-1866.97	0.00	0.00	5065.50	GEORGENE 2833-04H_BHL

WELLBORE TARGET DETAILS (LAT/LONG)

Name	TVD	+N/-S	+E/-W	Latitude	Longitude
GEORGENE 2833-04H_SHL	0.00	0.00	0.00	40.102818	-104.548967
GEORGENE 2833-04H_BHL	7080.00	-5072.38	-1866.97	40.088893	-104.555640



WELL DETAILS: GEORGENE 2833-04H

GL = 5017'

RKB = 24' @ 5041.00usft (RIG)

Plan: Design #3 (GEORGENE 2833-04H/Wellbore #1)

Date: 9/17/2020

HP

Planning Report

Database:	EDM 5000.16 Single User Db	Local Co-ordinate Reference:	Well GEORGENE 2833-04H
Company:	VERDAD RESOURCES	TVD Reference:	RKB = 24' @ 5041.00usft (RIG)
Project:	WATTENBERG FIELD	MD Reference:	RKB = 24' @ 5041.00usft (RIG)
Site:	2N-64W-28 GEORGENE PAD	North Reference:	True
Well:	GEORGENE 2833-04H	Survey Calculation Method:	Minimum Curvature
Wellbore:	Wellbore #1		
Design:	Design #3		

Project	WATTENBERG FIELD		
Map System:	US State Plane 1983	System Datum:	Mean Sea Level
Geo Datum:	North American Datum 1983		
Map Zone:	Colorado Northern Zone		

Site	2N-64W-28 GEORGENE PAD			
Site Position:		Northing:	1,281,723.49 usft	Latitude: 40.102807
From:	Lat/Long	Easting:	3,266,028.51 usft	Longitude: -104.548967
Position Uncertainty:	0.00 usft	Slot Radius:	13-3/16 "	

Well	GEORGENE 2833-04H			
Well Position	+N/-S	0.00 usft	Northing:	1,281,727.52 usft
	+E/-W	0.00 usft	Easting:	3,266,028.52 usft
Position Uncertainty		3.28 usft	Wellhead Elevation:	usft
Grid Convergence:		0.61 °	Ground Level:	5,017.00 usft

Wellbore	Wellbore #1				
Magnetics	Model Name	Sample Date	Declination (°)	Dip Angle (°)	Field Strength (nT)
	IGRF2015	7/7/2020	7.75	66.57	51,910.69959040

Design	Design #3				
Audit Notes:					
Version:		Phase:	PLAN	Tie On Depth:	0.00
Vertical Section:		Depth From (TVD) (usft)	+N/-S (usft)	+E/-W (usft)	Direction (°)
		0.00	0.00	0.00	179.79

Plan Survey Tool Program		Date	9/17/2020		
Depth From (usft)	Depth To (usft)	Survey (Wellbore)	Tool Name	Remarks	
1	0.00	1,700.00	Design #3 (Wellbore #1)	ISCWSA MWD	Fixed:v2:standard declination
2	1,700.00	12,554.79	Design #3 (Wellbore #1)	ISCWSA MWD	Fixed:v2:standard declination

HP

Planning Report

Database:	EDM 5000.16 Single User Db	Local Co-ordinate Reference:	Well GEORGENE 2833-04H
Company:	VERDAD RESOURCES	TVD Reference:	RKB = 24' @ 5041.00usft (RIG)
Project:	WATTENBERG FIELD	MD Reference:	RKB = 24' @ 5041.00usft (RIG)
Site:	2N-64W-28 GEORGENE PAD	North Reference:	True
Well:	GEORGENE 2833-04H	Survey Calculation Method:	Minimum Curvature
Wellbore:	Wellbore #1		
Design:	Design #3		

Plan Sections										
Measured Depth (usft)	Inclination (°)	Azimuth (°)	Vertical Depth (usft)	+N/-S (usft)	+E/-W (usft)	Dogleg Rate (°/100usft)	Build Rate (°/100usft)	Turn Rate (°/100usft)	TFO (°)	Target
0.00	0.00	0.00	0.00	0.00	0.00	0.00	0.00	0.00	0.00	
200.00	0.00	0.00	200.00	0.00	0.00	0.00	0.00	0.00	0.00	
1,035.00	16.70	283.20	1,023.23	27.59	-117.64	2.00	2.00	0.00	283.20	
6,677.94	16.70	283.20	6,428.16	397.88	-1,696.35	0.00	0.00	0.00	0.00	
7,720.38	90.00	179.79	7,080.00	-238.01	-1,884.31	9.00	7.03	-9.92	-102.86	
12,554.79	90.00	179.79	7,080.00	-5,072.38	-1,866.97	0.00	0.00	0.00	0.00	GEORGENE 2833-04

HP

Planning Report

Database:	EDM 5000.16 Single User Db	Local Co-ordinate Reference:	Well GEORGENE 2833-04H
Company:	VERDAD RESOURCES	TVD Reference:	RKB = 24' @ 5041.00usft (RIG)
Project:	WATTENBERG FIELD	MD Reference:	RKB = 24' @ 5041.00usft (RIG)
Site:	2N-64W-28 GEORGENE PAD	North Reference:	True
Well:	GEORGENE 2833-04H	Survey Calculation Method:	Minimum Curvature
Wellbore:	Wellbore #1		
Design:	Design #3		

Planned Survey									
Measured Depth (usft)	Inclination (°)	Azimuth (°)	Vertical Depth (usft)	+N/-S (usft)	+E/-W (usft)	Vertical Section (usft)	Dogleg Rate (°/100usft)	Build Rate (°/100usft)	Turn Rate (°/100usft)
0.00	0.00	0.00	0.00	0.00	0.00	0.00	0.00	0.00	0.00
100.00	0.00	0.00	100.00	0.00	0.00	0.00	0.00	0.00	0.00
200.00	0.00	0.00	200.00	0.00	0.00	0.00	0.00	0.00	0.00
Begin Nudge @ 200.00ft									
300.00	2.00	283.20	299.98	0.40	-1.70	-0.40	2.00	2.00	0.00
400.00	4.00	283.20	399.84	1.59	-6.79	-1.62	2.00	2.00	0.00
500.00	6.00	283.20	499.45	3.58	-15.28	-3.64	2.00	2.00	0.00
600.00	8.00	283.20	598.70	6.37	-27.14	-6.47	2.00	2.00	0.00
700.00	10.00	283.20	697.47	9.94	-42.37	-10.09	2.00	2.00	0.00
800.00	12.00	283.20	795.62	14.30	-60.95	-14.52	2.00	2.00	0.00
900.00	14.00	283.20	893.06	19.43	-82.85	-19.74	2.00	2.00	0.00
1,000.00	16.00	283.20	989.64	25.34	-108.04	-25.74	2.00	2.00	0.00
1,035.00	16.70	283.20	1,023.23	27.59	-117.64	-28.02	2.00	2.00	0.00
Hold Tangent @ 1035.00ft									
1,100.00	16.70	283.20	1,085.49	31.86	-135.82	-32.35	0.00	0.00	0.00
1,200.00	16.70	283.20	1,181.27	38.42	-163.80	-39.02	0.00	0.00	0.00
1,300.00	16.70	283.20	1,277.05	44.98	-191.78	-45.68	0.00	0.00	0.00
1,400.00	16.70	283.20	1,372.83	51.54	-219.75	-52.35	0.00	0.00	0.00
1,500.00	16.70	283.20	1,468.61	58.10	-247.73	-59.01	0.00	0.00	0.00
1,600.00	16.70	283.20	1,564.40	64.67	-275.71	-65.68	0.00	0.00	0.00
1,700.00	16.70	283.20	1,660.18	71.23	-303.68	-72.34	0.00	0.00	0.00
1,741.57	16.70	283.20	1,700.00	73.96	-315.31	-75.11	0.00	0.00	0.00
9 5/8"									
1,800.00	16.70	283.20	1,755.96	77.79	-331.66	-79.01	0.00	0.00	0.00
1,900.00	16.70	283.20	1,851.74	84.35	-359.64	-85.67	0.00	0.00	0.00
2,000.00	16.70	283.20	1,947.53	90.91	-387.61	-92.33	0.00	0.00	0.00
2,100.00	16.70	283.20	2,043.31	97.48	-415.59	-99.00	0.00	0.00	0.00
2,200.00	16.70	283.20	2,139.09	104.04	-443.57	-105.66	0.00	0.00	0.00
2,300.00	16.70	283.20	2,234.87	110.60	-471.54	-112.33	0.00	0.00	0.00
2,400.00	16.70	283.20	2,330.66	117.16	-499.52	-118.99	0.00	0.00	0.00
2,500.00	16.70	283.20	2,426.44	123.72	-527.50	-125.66	0.00	0.00	0.00
2,600.00	16.70	283.20	2,522.22	130.29	-555.47	-132.32	0.00	0.00	0.00
2,700.00	16.70	283.20	2,618.00	136.85	-583.45	-138.98	0.00	0.00	0.00
2,800.00	16.70	283.20	2,713.78	143.41	-611.43	-145.65	0.00	0.00	0.00
2,900.00	16.70	283.20	2,809.57	149.97	-639.40	-152.31	0.00	0.00	0.00
3,000.00	16.70	283.20	2,905.35	156.53	-667.38	-158.98	0.00	0.00	0.00
3,100.00	16.70	283.20	3,001.13	163.09	-695.36	-165.64	0.00	0.00	0.00
3,200.00	16.70	283.20	3,096.91	169.66	-723.34	-172.31	0.00	0.00	0.00
3,300.00	16.70	283.20	3,192.70	176.22	-751.31	-178.97	0.00	0.00	0.00
3,400.00	16.70	283.20	3,288.48	182.78	-779.29	-185.64	0.00	0.00	0.00
3,500.00	16.70	283.20	3,384.26	189.34	-807.27	-192.30	0.00	0.00	0.00
3,600.00	16.70	283.20	3,480.04	195.90	-835.24	-198.96	0.00	0.00	0.00
3,700.00	16.70	283.20	3,575.82	202.47	-863.22	-205.63	0.00	0.00	0.00
3,800.00	16.70	283.20	3,671.61	209.03	-891.20	-212.29	0.00	0.00	0.00
3,900.00	16.70	283.20	3,767.39	215.59	-919.17	-218.96	0.00	0.00	0.00
4,000.00	16.70	283.20	3,863.17	222.15	-947.15	-225.62	0.00	0.00	0.00
4,100.00	16.70	283.20	3,958.95	228.71	-975.13	-232.29	0.00	0.00	0.00
4,200.00	16.70	283.20	4,054.74	235.28	-1,003.10	-238.95	0.00	0.00	0.00
4,300.00	16.70	283.20	4,150.52	241.84	-1,031.08	-245.62	0.00	0.00	0.00
4,400.00	16.70	283.20	4,246.30	248.40	-1,059.06	-252.28	0.00	0.00	0.00
4,500.00	16.70	283.20	4,342.08	254.96	-1,087.03	-258.94	0.00	0.00	0.00
4,600.00	16.70	283.20	4,437.86	261.52	-1,115.01	-265.61	0.00	0.00	0.00
4,700.00	16.70	283.20	4,533.65	268.09	-1,142.99	-272.27	0.00	0.00	0.00

HP

Planning Report

Database:	EDM 5000.16 Single User Db	Local Co-ordinate Reference:	Well GEORGENE 2833-04H
Company:	VERDAD RESOURCES	TVD Reference:	RKB = 24' @ 5041.00usft (RIG)
Project:	WATTENBERG FIELD	MD Reference:	RKB = 24' @ 5041.00usft (RIG)
Site:	2N-64W-28 GEORGENE PAD	North Reference:	True
Well:	GEORGENE 2833-04H	Survey Calculation Method:	Minimum Curvature
Wellbore:	Wellbore #1		
Design:	Design #3		

Planned Survey									
Measured Depth (usft)	Inclination (°)	Azimuth (°)	Vertical Depth (usft)	+N/-S (usft)	+E/-W (usft)	Vertical Section (usft)	Dogleg Rate (°/100usft)	Build Rate (°/100usft)	Turn Rate (°/100usft)
4,800.00	16.70	283.20	4,629.43	274.65	-1,170.96	-278.94	0.00	0.00	0.00
4,900.00	16.70	283.20	4,725.21	281.21	-1,198.94	-285.60	0.00	0.00	0.00
5,000.00	16.70	283.20	4,820.99	287.77	-1,226.92	-292.27	0.00	0.00	0.00
5,100.00	16.70	283.20	4,916.78	294.33	-1,254.89	-298.93	0.00	0.00	0.00
5,200.00	16.70	283.20	5,012.56	300.89	-1,282.87	-305.59	0.00	0.00	0.00
5,300.00	16.70	283.20	5,108.34	307.46	-1,310.85	-312.26	0.00	0.00	0.00
5,400.00	16.70	283.20	5,204.12	314.02	-1,338.83	-318.92	0.00	0.00	0.00
5,500.00	16.70	283.20	5,299.90	320.58	-1,366.80	-325.59	0.00	0.00	0.00
5,600.00	16.70	283.20	5,395.69	327.14	-1,394.78	-332.25	0.00	0.00	0.00
5,700.00	16.70	283.20	5,491.47	333.70	-1,422.76	-338.92	0.00	0.00	0.00
5,800.00	16.70	283.20	5,587.25	340.27	-1,450.73	-345.58	0.00	0.00	0.00
5,900.00	16.70	283.20	5,683.03	346.83	-1,478.71	-352.25	0.00	0.00	0.00
6,000.00	16.70	283.20	5,778.82	353.39	-1,506.69	-358.91	0.00	0.00	0.00
6,100.00	16.70	283.20	5,874.60	359.95	-1,534.66	-365.57	0.00	0.00	0.00
6,200.00	16.70	283.20	5,970.38	366.51	-1,562.64	-372.24	0.00	0.00	0.00
6,300.00	16.70	283.20	6,066.16	373.08	-1,590.62	-378.90	0.00	0.00	0.00
6,400.00	16.70	283.20	6,161.95	379.64	-1,618.59	-385.57	0.00	0.00	0.00
6,500.00	16.70	283.20	6,257.73	386.20	-1,646.57	-392.23	0.00	0.00	0.00
6,600.00	16.70	283.20	6,353.51	392.76	-1,674.55	-398.90	0.00	0.00	0.00
6,677.94	16.70	283.20	6,428.16	397.88	-1,696.35	-404.09	0.00	0.00	0.00
KOP @ 6677.94ft :: DLS = 9°/100'									
6,700.00	16.37	276.32	6,449.31	398.94	-1,702.53	-405.18	9.00	-1.50	-31.20
6,800.00	17.74	245.63	6,545.11	394.20	-1,730.47	-400.54	9.00	1.37	-30.69
6,900.00	22.78	223.82	6,639.02	373.90	-1,757.80	-380.34	9.00	5.04	-21.81
7,000.00	29.68	210.60	6,728.75	338.55	-1,783.86	-345.09	9.00	6.90	-13.22
7,100.00	37.41	202.22	6,812.08	289.02	-1,808.00	-295.65	9.00	7.74	-8.38
7,200.00	45.56	196.43	6,886.95	226.53	-1,829.63	-233.23	9.00	8.15	-5.80
7,300.00	53.93	192.07	6,951.54	152.62	-1,848.21	-159.39	9.00	8.37	-4.36
7,400.00	62.42	188.56	7,004.23	69.10	-1,863.29	-75.93	9.00	8.49	-3.51
7,500.00	70.99	185.56	7,043.75	-21.96	-1,874.50	15.09	9.00	8.57	-3.00
7,600.00	79.60	182.86	7,069.11	-118.33	-1,881.56	111.43	9.00	8.61	-2.70
7,700.00	88.24	180.31	7,079.69	-217.63	-1,884.29	210.72	9.00	8.63	-2.55
7,720.38	90.00	179.79	7,080.00	-238.01	-1,884.31	231.10	9.00	8.64	-2.52
End Build @ 7720.38ft									
7,800.00	90.00	179.79	7,080.00	-317.62	-1,884.02	310.72	0.00	0.00	0.00
7,900.00	90.00	179.79	7,080.00	-417.62	-1,883.66	410.72	0.00	0.00	0.00
8,000.00	90.00	179.79	7,080.00	-517.62	-1,883.30	510.72	0.00	0.00	0.00
8,100.00	90.00	179.79	7,080.00	-617.62	-1,882.95	610.72	0.00	0.00	0.00
8,200.00	90.00	179.79	7,080.00	-717.62	-1,882.59	710.72	0.00	0.00	0.00
8,300.00	90.00	179.79	7,080.00	-817.62	-1,882.23	810.72	0.00	0.00	0.00
8,400.00	90.00	179.79	7,080.00	-917.62	-1,881.87	910.72	0.00	0.00	0.00
8,500.00	90.00	179.79	7,080.00	-1,017.62	-1,881.51	1,010.72	0.00	0.00	0.00
8,600.00	90.00	179.79	7,080.00	-1,117.62	-1,881.15	1,110.72	0.00	0.00	0.00
8,700.00	90.00	179.79	7,080.00	-1,217.62	-1,880.79	1,210.72	0.00	0.00	0.00
8,800.00	90.00	179.79	7,080.00	-1,317.62	-1,880.44	1,310.72	0.00	0.00	0.00
8,900.00	90.00	179.79	7,080.00	-1,417.62	-1,880.08	1,410.72	0.00	0.00	0.00
9,000.00	90.00	179.79	7,080.00	-1,517.62	-1,879.72	1,510.72	0.00	0.00	0.00
9,100.00	90.00	179.79	7,080.00	-1,617.61	-1,879.36	1,610.72	0.00	0.00	0.00
9,200.00	90.00	179.79	7,080.00	-1,717.61	-1,879.00	1,710.72	0.00	0.00	0.00
9,300.00	90.00	179.79	7,080.00	-1,817.61	-1,878.64	1,810.72	0.00	0.00	0.00
9,400.00	90.00	179.79	7,080.00	-1,917.61	-1,878.28	1,910.72	0.00	0.00	0.00
9,500.00	90.00	179.79	7,080.00	-2,017.61	-1,877.93	2,010.72	0.00	0.00	0.00
9,600.00	90.00	179.79	7,080.00	-2,117.61	-1,877.57	2,110.72	0.00	0.00	0.00
9,700.00	90.00	179.79	7,080.00	-2,217.61	-1,877.21	2,210.72	0.00	0.00	0.00

HP

Planning Report

Database:	EDM 5000.16 Single User Db	Local Co-ordinate Reference:	Well GEORGENE 2833-04H
Company:	VERDAD RESOURCES	TVD Reference:	RKB = 24' @ 5041.00usft (RIG)
Project:	WATTENBERG FIELD	MD Reference:	RKB = 24' @ 5041.00usft (RIG)
Site:	2N-64W-28 GEORGENE PAD	North Reference:	True
Well:	GEORGENE 2833-04H	Survey Calculation Method:	Minimum Curvature
Wellbore:	Wellbore #1		
Design:	Design #3		

Planned Survey										
Measured Depth (usft)	Inclination (°)	Azimuth (°)	Vertical Depth (usft)	+N/-S (usft)	+E/-W (usft)	Vertical Section (usft)	Dogleg Rate (°/100usft)	Build Rate (°/100usft)	Turn Rate (°/100usft)	
9,800.00	90.00	179.79	7,080.00	-2,317.61	-1,876.85	2,310.72	0.00	0.00	0.00	
9,900.00	90.00	179.79	7,080.00	-2,417.61	-1,876.49	2,410.72	0.00	0.00	0.00	
10,000.00	90.00	179.79	7,080.00	-2,517.61	-1,876.13	2,510.72	0.00	0.00	0.00	
10,100.00	90.00	179.79	7,080.00	-2,617.61	-1,875.77	2,610.72	0.00	0.00	0.00	
10,200.00	90.00	179.79	7,080.00	-2,717.61	-1,875.42	2,710.72	0.00	0.00	0.00	
10,300.00	90.00	179.79	7,080.00	-2,817.61	-1,875.06	2,810.72	0.00	0.00	0.00	
10,400.00	90.00	179.79	7,080.00	-2,917.61	-1,874.70	2,910.72	0.00	0.00	0.00	
10,500.00	90.00	179.79	7,080.00	-3,017.61	-1,874.34	3,010.72	0.00	0.00	0.00	
10,600.00	90.00	179.79	7,080.00	-3,117.61	-1,873.98	3,110.72	0.00	0.00	0.00	
10,700.00	90.00	179.79	7,080.00	-3,217.60	-1,873.62	3,210.72	0.00	0.00	0.00	
10,800.00	90.00	179.79	7,080.00	-3,317.60	-1,873.26	3,310.72	0.00	0.00	0.00	
10,900.00	90.00	179.79	7,080.00	-3,417.60	-1,872.91	3,410.72	0.00	0.00	0.00	
11,000.00	90.00	179.79	7,080.00	-3,517.60	-1,872.55	3,510.72	0.00	0.00	0.00	
11,100.00	90.00	179.79	7,080.00	-3,617.60	-1,872.19	3,610.72	0.00	0.00	0.00	
11,200.00	90.00	179.79	7,080.00	-3,717.60	-1,871.83	3,710.72	0.00	0.00	0.00	
11,300.00	90.00	179.79	7,080.00	-3,817.60	-1,871.47	3,810.72	0.00	0.00	0.00	
11,400.00	90.00	179.79	7,080.00	-3,917.60	-1,871.11	3,910.72	0.00	0.00	0.00	
11,500.00	90.00	179.79	7,080.00	-4,017.60	-1,870.75	4,010.72	0.00	0.00	0.00	
11,600.00	90.00	179.79	7,080.00	-4,117.60	-1,870.40	4,110.72	0.00	0.00	0.00	
11,700.00	90.00	179.79	7,080.00	-4,217.60	-1,870.04	4,210.72	0.00	0.00	0.00	
11,800.00	90.00	179.79	7,080.00	-4,317.60	-1,869.68	4,310.72	0.00	0.00	0.00	
11,900.00	90.00	179.79	7,080.00	-4,417.60	-1,869.32	4,410.72	0.00	0.00	0.00	
12,000.00	90.00	179.79	7,080.00	-4,517.60	-1,868.96	4,510.72	0.00	0.00	0.00	
12,100.00	90.00	179.79	7,080.00	-4,617.60	-1,868.60	4,610.72	0.00	0.00	0.00	
12,200.00	90.00	179.79	7,080.00	-4,717.59	-1,868.24	4,710.72	0.00	0.00	0.00	
12,300.00	90.00	179.79	7,080.00	-4,817.59	-1,867.89	4,810.72	0.00	0.00	0.00	
12,400.00	90.00	179.79	7,080.00	-4,917.59	-1,867.53	4,910.72	0.00	0.00	0.00	
12,500.00	90.00	179.79	7,080.00	-5,017.59	-1,867.17	5,010.72	0.00	0.00	0.00	
12,554.79	90.00	179.79	7,080.00	-5,072.38	-1,866.97	5,065.50	0.00	0.00	0.00	
TD Well @ 12554.79ft										

Casing Points					
Measured Depth (usft)	Vertical Depth (usft)	Name	Casing Diameter (")	Hole Diameter (")	
1,741.57	1,700.00	9 5/8"	9-5/8	13-1/2	

Plan Annotations					
Measured Depth (usft)	Vertical Depth (usft)	Local Coordinates		Comment	
		+N/-S (usft)	+E/-W (usft)		
200.00	200.00	0.00	0.00	Begin Nudge @ 200.00ft	
1,035.00	1,023.23	27.59	-117.64	Hold Tangent @ 1035.00ft	
6,677.94	6,428.16	397.88	-1,696.35	KOP @ 6677.94ft :: DLS = 9°/100'	
7,720.38	7,080.00	-238.01	-1,884.31	End Build @ 7720.38ft	
12,554.79	7,080.00	-5,072.38	-1,866.97	TD Well @ 12554.79ft	