

Wiepking-Fullerton Energy LLC, Ma-State 16
073-06644

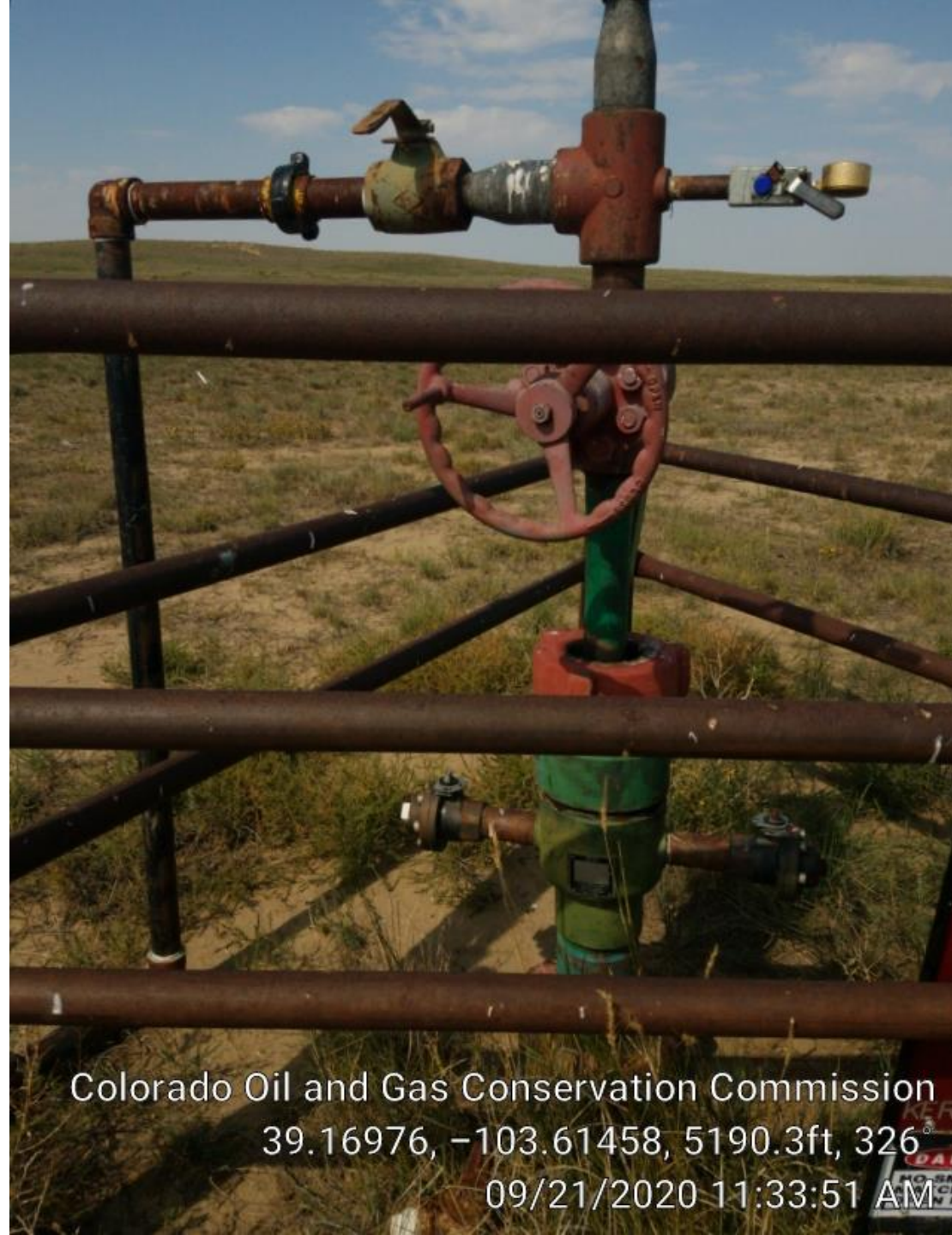
Inspection #688308547

9/21/2020

Routine Inspection



Colorado Oil and Gas Conservation Commission
39.28071, -103.35836, 355°
09/21/2020 11:33:33 AM



Colorado Oil and Gas Conservation Commission
39.16976, -103.61458, 5190.3ft, 326°
09/21/2020 11:33:51 AM



Colorado Oil and Gas Conservation Commission
39.16976, -103.61457, 5200.1ft, 334°
09/21/2020 11:33:40 AM



Colorado Oil and Gas Conservation Commission
39.16976, -103.6147, 5167.3ft, 298°
09/21/2020 11:43:01 AM



Colorado Oil and Gas Conservation Commission
39.16975, -103.61458, 5210.0ft, 358°
09/21/2020 11:44:25 AM



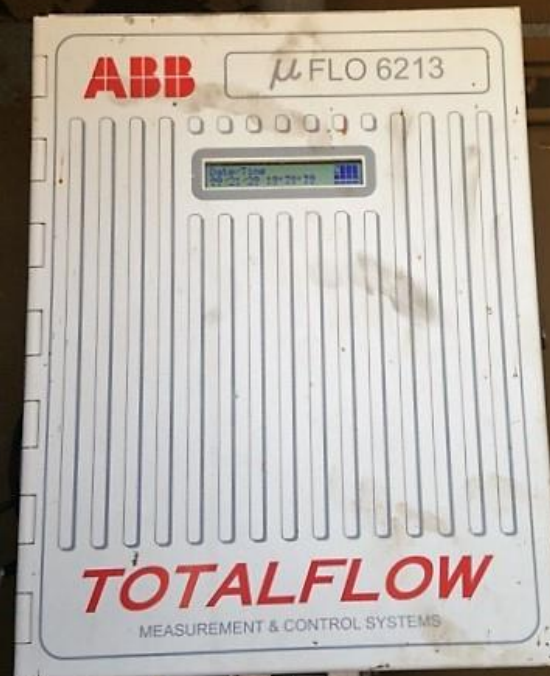
Colorado Oil and Gas Conservation Commission
39.16977, -103.61446, 5134.5ft, 343°
09/21/2020 11:47:50 AM



Colorado Oil and Gas Conservation Commission
39.16976, -103.61457, 5183.7ft, 191°
09/21/2020 11:33:48 AM



Colorado Oil and Gas Conservation Commission
39.16951, -103.61446, 5206.7ft, 119°
09/21/2020 11:34:28 AM



Colorado Oil and Gas Conservation Commission
39.16952, -103.61446, 5213.3ft, 73°
09/21/2020 11:34:44 AM

ABB

μ FLO 6213

Temperature 28.88

Colorado Oil and Gas Conservation Commission
39.16953, -103.61447, 5226.4ft, 109°
09/21/2020 11:34:59 AM

TOTALFLOW

ABB

μ FLO 6213

Static Pressure
17.7 DCTO

200

Colorado Oil and Gas Conservation Commission

39.16953, -103.61447, 5226.4ft, 104°

09/21/2020 11:35:05 AM

TOTALFLOW

ABB

μ FLO 6213

Diff. Pressure 200
0 In. H₂O

Colorado Oil and Gas Conservation Commission

TOTALFLOW
39.16953, -103.61447, 5226.4ft, 108°
09/21/2020 11:35:08 AM

μ FLO 6213

Total Accum. Volume 2

Colorado Oil and Gas Conservation Commission
39.16952, -103.61447, 5223.1ft, 111°
09/21/2020 11:35:13 AM

ABB

μ FLO 6213



Colorado Oil and Gas Conservation Commission
39.16953, -103.61448, 5229.7ft, 108°
09/21/2020 11:35:18 AM

ABB

μ FLO 6213



Colorado Oil and Gas Conservation Commission
39.16953, -103.61447, 5236.2ft, 109°
09/21/2020 11:35:23 AM

ABB

μ FLO 6213

Yesterday's Volume 2111
0 Mcc

Colorado Oil and Gas Conservation Commission
39.16953, -103.61445, 5236.2ft, 107°
09/21/2020 11:35:29 AM

ABB

μ FLO 6213

Mar Eagle #16
Line 1000 c

Colorado Oil and Gas Conservation Commission
39.16953, -103.61445, 5239.5ft, 110°
09/21/2020 11:35:34 AM