



July 2, 2020

VIA ELECTRONIC TRANSMITTAL

Department of Natural Resources  
Oil and Gas Conservation Commission  
The Chancery Building  
Attn: Jeff Robbins, Director  
1120 Lincoln St., Suite 801  
Denver, CO 80203

Re: **30-Day Certification Letter – Rule 318A.e**

<u>Well Name</u>	<u>Well Head Location (SHL) Weld County</u>			
<b>Georgene 2828-04H</b>	280	FSL	607	FEL

Dear COGCC Director,

Verdad Resources LLC (Verdad) hereby certifies to the Director that that a thirty (30-day) notice has been given by certified mail to all owners in the proposed 200-acre wellbore spacing unit. The proposed 200-acre wellbore spacing unit for the Georgene 2828-04H well consists of:

**Township 2N, Range 64W:**  
**Section 28: N2S2**  
**Section 29: NE4SE4**

We have not received any objections to such well location or proposed spacing unit, there Verdad hereby requests the Director to approve the proposed well.

If you should have any questions or concerns regarding this permit, please contact the undersigned at 720-845-6909.

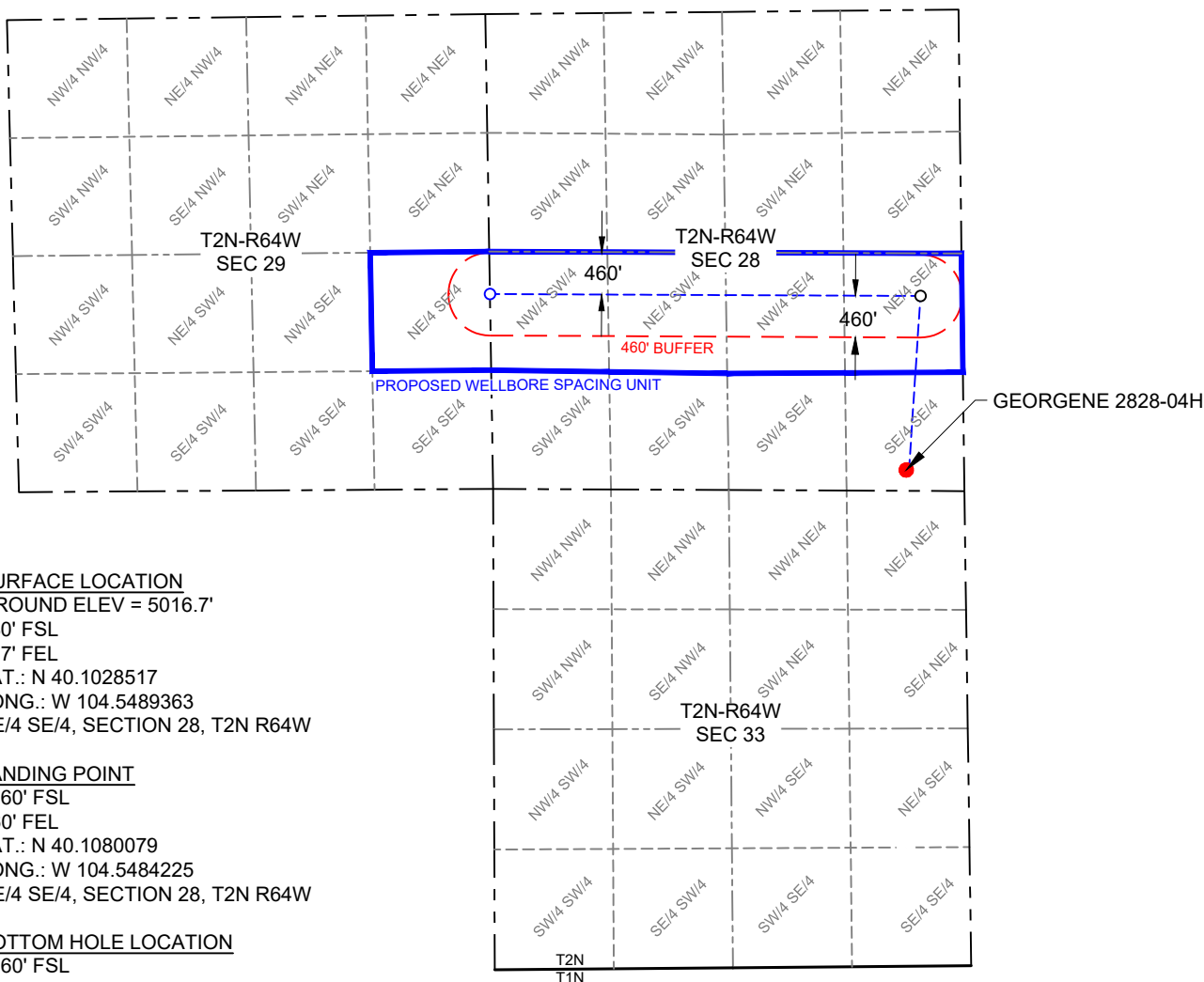
Sincerely,

A handwritten signature in black ink that reads "Allison Schieber".

Allison Schieber  
Sr Regulatory Analyst  
Verdad Oil and Gas Corporation

SCALE: 1" = 2000'  
0' 1000' 2000'

# WELLBORE SPACING UNIT WELD COUNTY, COLORADO



**SURFACE LOCATION**  
GROUND ELEV = 5016.7'  
280' FSL  
607' FEL  
LAT.: N 40.1028517  
LONG.: W 104.5489363  
SE/4 SE/4, SECTION 28, T2N R64W

**LANDING POINT**  
2160' FSL  
460' FEL  
LAT.: N 40.1080079  
LONG.: W 104.5484225  
NE/4 SE/4, SECTION 28, T2N R64W

**BOTTOM HOLE LOCATION**  
2160' FSL  
0' FWL  
LAT.: N 40.1082069  
LONG.: W 104.5654814  
WEST LINE OF NW/4 SW/4,  
SECTION 28, T2N R64W

## LEGEND

- WELL BORE
- - - 460' BUFFER
- WELL BORE SPACING UNIT
- SURFACE HOLE LOCATION
- LANDING POINT
- BOTTOM HOLE LOCATION

## NOTES

- Horizontal (NAD 83) and vertical (NAVD 88) datum is based on the Trimble VRS Network or OPUS Solution.
- See Form 2A, if applicable for visible improvements within 500' of wellhead.
- Distances to nearest section lines are measured perpendicularly.
- This is not a land survey nor land survey plat.

VERDAD RESOURCES  
GEORGENE 2828-04H  
JOB NO. 128300

JLS	05/13/2020	REVISION:	
SHEET :	1 OF 1	REV3	07/29/2020
FILE:	WBU_GEORGENE_2828_04H-WELLBORE_REV3		

