



July 2, 2020

VIA ELECTRONIC TRANSMITTAL

Department of Natural Resources
Oil and Gas Conservation Commission
The Chancery Building
Attn: Jeff Robbins, Director
1120 Lincoln St., Suite 801
Denver, CO 80203

Re: **30-Day Certification Letter – Rule 318A.e**

<u>Well Name</u>	<u>Well Head Location (SHL) Weld County</u>			
Georgene 2828-03H	292	FSL	598	FEL

Dear COGCC Director,

Verdad Resources LLC (Verdad) hereby certifies to the Director that that a thirty (30-day) notice has been given by certified mail to all owners in the proposed 400-acre wellbore spacing unit. The proposed 400-acre wellbore spacing unit for the Georgene 2828-03H well consists of:

Township 2N, Range 64W:
Section 28: S2
Section 29: E2SE4

We have not received any objections to such well location or proposed spacing unit, there Verdad hereby requests the Director to approve the proposed well.

If you should have any questions or concerns regarding this permit, please contact the undersigned at 720-845-6909.

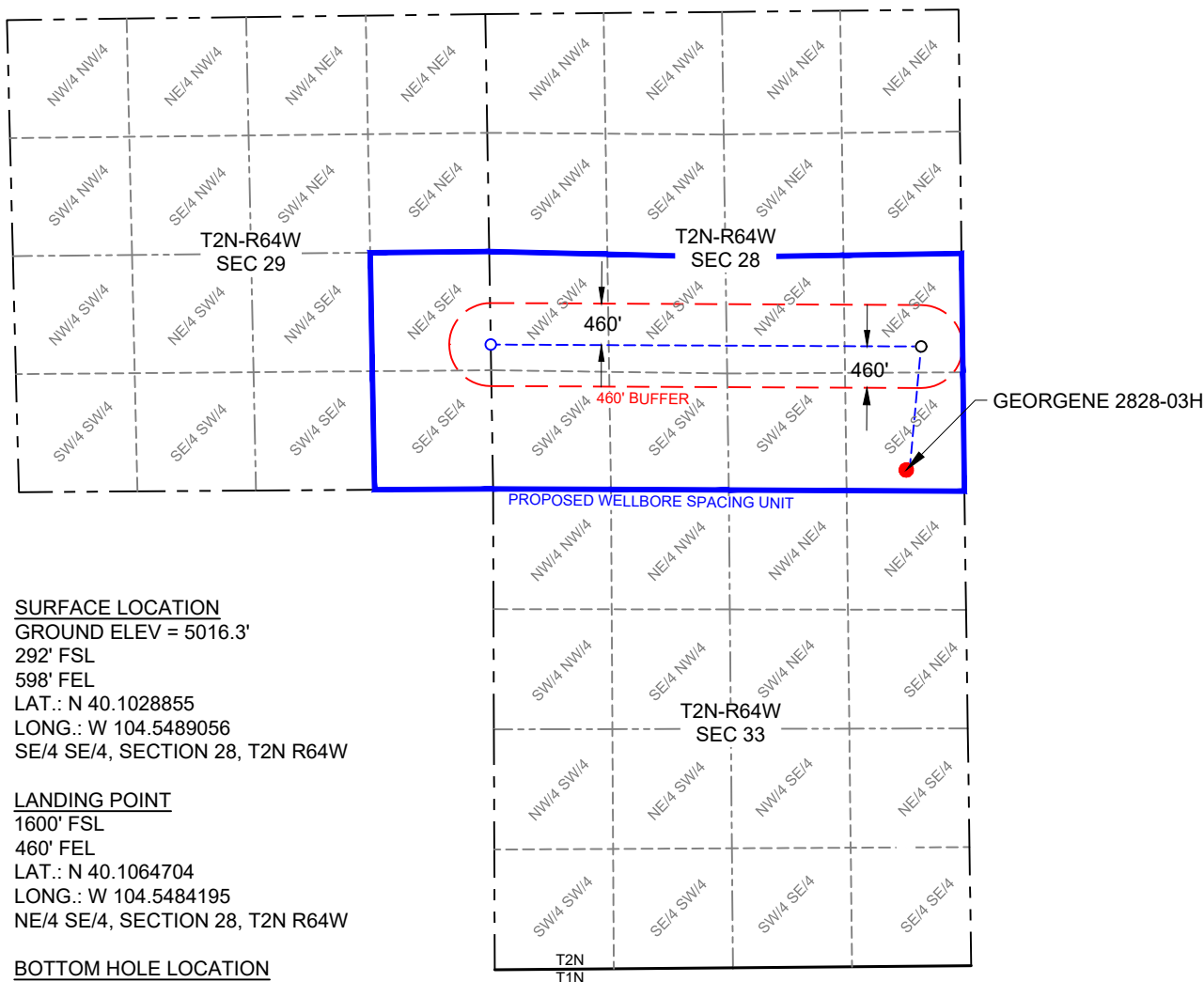
Sincerely,

A handwritten signature in black ink that reads "Allison Schieber".

Allison Schieber
Sr Regulatory Analyst
Verdad Oil and Gas Corporation

SCALE: 1" = 2000'
0' 1000' 2000'

WELLBORE SPACING UNIT WELD COUNTY, COLORADO



SURFACE LOCATION
GROUND ELEV = 5016.3'
292' FSL
598' FEL
LAT.: N 40.1028855
LONG.: W 104.5489056
SE/4 SE/4, SECTION 28, T2N R64W

LANDING POINT
1600' FSL
460' FEL
LAT.: N 40.1064704
LONG.: W 104.5484195
NE/4 SE/4, SECTION 28, T2N R64W

BOTTOM HOLE LOCATION
1600' FSL
0' FWL
LAT.: N 40.1066693
LONG.: W 104.5654698
WEST LINE OF NW/4 SW/4,
SECTION 28, T2N R64W

NOTES

1. Horizontal (NAD 83) and vertical (NAVD 88) datum is based on the Trimble VRS Network or OPUS Solution.
2. See Form 2A, if applicable for visible improvements within 500' of wellhead.
3. Distances to nearest section lines are measured perpendicularly.
4. This is not a land survey nor land survey plat.

LEGEND

- WELL BORE
- - - 460' BUFFER
- WELL BORE SPACING UNIT
- SURFACE HOLE LOCATION
- LANDING POINT
- BOTTOM HOLE LOCATION

VERDAD RESOURCES
GEORGENE 2828-03H
JOB NO. 128300

JLS	05/13/2020	REVISION:	
SHEET :	1 OF 1	REV2	6/26/2020
FILE: WBU_GEORGENE_2828_03H-WELLBORE_REV2			

