

VERDAD RESOURCES

**WATTENBERG FIELD
2N-64W-28 GEORGENE PAD
GEORGENE 2828-01H**

Wellbore #1

Plan: Design #2

Standard Planning Report

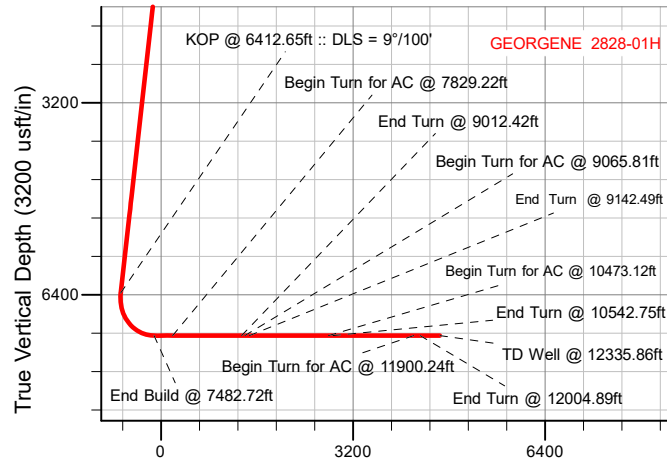
09 July, 2020

Project: WATTENBERG FIELD
Site: 2N-64W-28 GEORGENE PAD
Well: GEORGENE 2828-01H
Wellbore: Wellbore #1
Design: Design #2

VERDAD RESOURCES

CASING DETAILS

TVD	MD	Name	Size
1700.00	1708.37	9 5/8"	9-5/8



SHL
317' FSL
581' FEL

LP
480' FSL
460' FEL

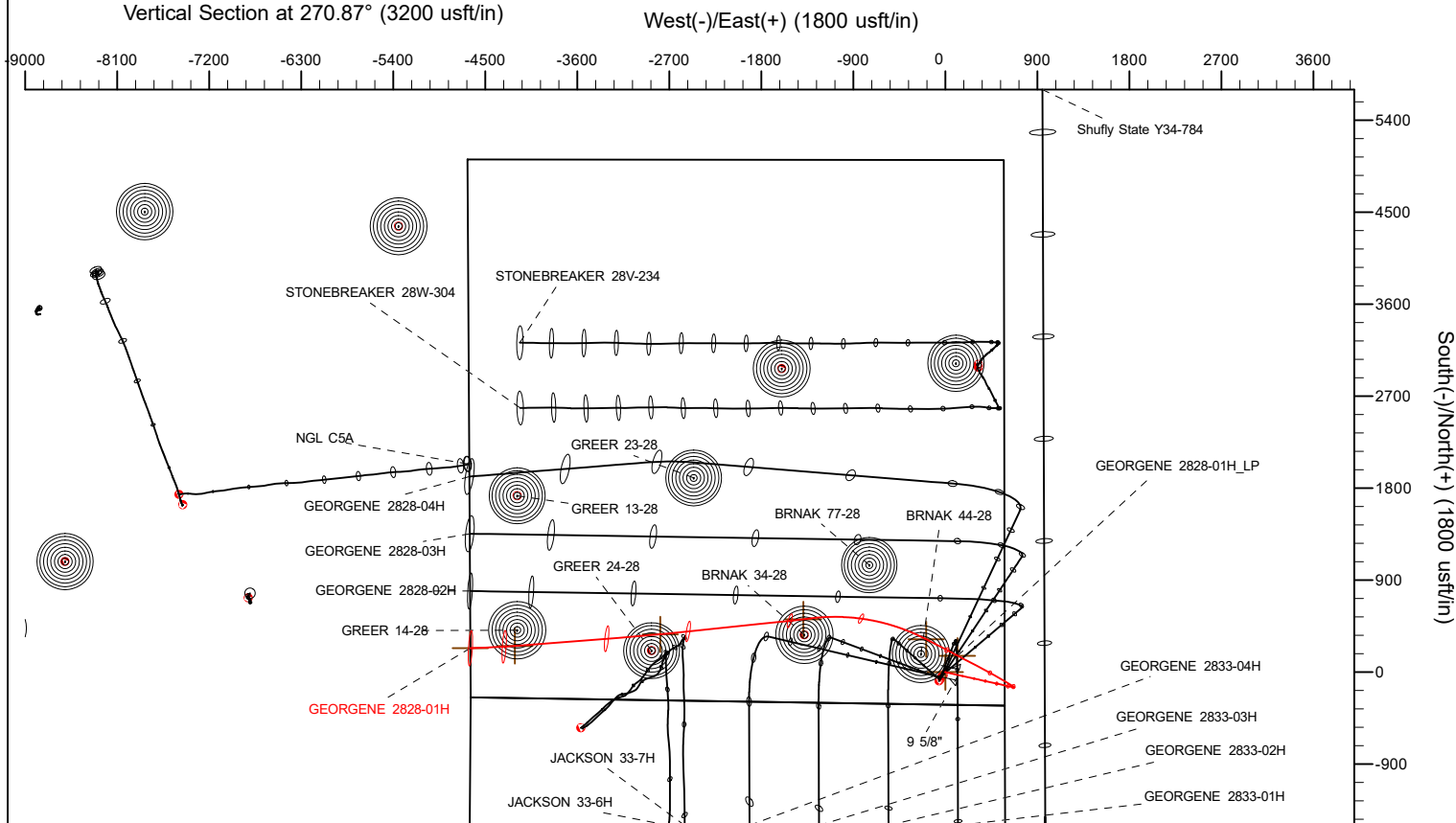
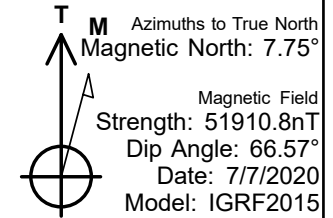
BHL
480' FSL
0' FWL

SECTION DETAILS

Sec	MD	Inc	Azi	TVD	+N/-S	+E/-W	Dleg	TFace	Vsect	Target
1	0.00	0.00	0.00	0.00	0.00	0.00	0.00	0.00	0.00	
2	200.00	0.00	0.00	200.00	0.00	0.00	0.00	0.00	0.00	
3	526.50	6.53	102.55	525.79	-4.04	18.14	2.00	102.55	-18.20	
4	6412.65	6.53	102.55	6373.76	-149.49	671.54	0.00	0.00	-673.73	
5	7482.72	90.00	297.55	7080.00	161.73	120.21	9.00	-164.91	-117.74	
6	7829.22	90.00	297.55	7080.00	322.00	-187.00	0.00	0.00	191.87	GEORGENE 2828-01H_Tgt
7	9012.42	90.00	262.49	7080.00	524.63	-1334.06	2.96	-90.00	1341.87	
8	9065.81	90.00	262.49	7080.00	517.65	-1386.99	0.00	0.00	1394.69	GEORGENE 2828-01H_Tgt2
9	9142.49	90.00	264.02	7080.00	508.64	-1463.14	2.00	90.01	1470.70	
10	10473.12	90.00	264.02	7080.00	370.00	-2786.53	0.00	0.00	2791.83	GEORGENE 2828-01H_Tgt3
11	10542.75	90.00	265.41	7080.00	363.59	-2855.86	2.00	90.00	2861.05	
12	11900.24	90.00	265.41	7080.00	255.00	-4209.00	0.00	0.00	4212.39	GEORGENE 2828-01H_Tgt4
13	12004.89	90.00	267.50	7080.00	248.54	-4313.44	2.00	90.00	4316.72	
14	12335.86	90.00	267.50	7080.00	234.13	-4644.10	0.00	0.00	4647.12	GEORGENE 2828-01H_BHL

WELLBORE TARGET DETAILS (LAT/LONG)

Name	TVD	+N/-S	+E/-W	Latitude	Longitude
GEORGENE 2828-01H_SHL	0.00	0.00	0.00	40.102953	-104.548844
GEORGENE 2828-01H_BHL	7080.00	234.13	-4644.10	40.103595	-104.565446



WELL DETAILS: GEORGENE 2828-01H

GL = 5016'
RKB = 24' @ 5040.00usft (RIG)

Plan: Design #2 (GEORGENE 2828-01H/Wellbore #1)

Date: 7/08/2020

HP

Planning Report

Database:	EDM 5000.16 Single User Db	Local Co-ordinate Reference:	Well GEORGENE 2828-01H
Company:	VERDAD RESOURCES	TVD Reference:	RKB = 24' @ 5040.00usft (RIG)
Project:	WATTENBERG FIELD	MD Reference:	RKB = 24' @ 5040.00usft (RIG)
Site:	2N-64W-28 GEORGENE PAD	North Reference:	True
Well:	GEORGENE 2828-01H	Survey Calculation Method:	Minimum Curvature
Wellbore:	Wellbore #1		
Design:	Design #2		

Project	WATTENBERG FIELD		
Map System:	US State Plane 1983	System Datum:	Mean Sea Level
Geo Datum:	North American Datum 1983		
Map Zone:	Colorado Northern Zone		

Site		2N-64W-28 GEORGENE PAD				
Site Position:		Northing:	1,281,723.49	usft	Latitude:	40.102807
From:	Lat/Long	Easting:	3,266,028.51	usft	Longitude:	-104.548967
Position Uncertainty:		0.00	usft	Slot Radius:	13-3/16	"

Well		GEORGENE 2828-01H				
Well Position	+N/-S	0.00 usft	Northing:	1,281,777.10 usft	Latitude:	40.102953
	+E/-W	0.00 usft	Easting:	3,266,062.31 usft	Longitude:	-104.548845
Position Uncertainty		3.28 usft	Wellhead Elevation:	usft	Ground Level:	5,016.00 usft
Grid Convergence:		0.61 °				

Wellbore	Wellbore #1				
Magnetics	Model Name	Sample Date	Declination (°)	Dip Angle (°)	Field Strength (nT)
	IGRF2015	7/7/2020	7.75	66.57	51,910.79032031

Design	Design #2				
Audit Notes:					
Version:		Phase:	PLAN	Tie On Depth:	0.00
Vertical Section:	Depth From (TVD) (usft)	+N/-S (usft)	+E/-W (usft)	Direction (°)	
	0.00	0.00	0.00	270.87	

Plan Survey Tool Program	Date	7/9/2020			
Depth From (usft)	Depth To (usft)	Survey (Wellbore)	Tool Name	Remarks	
1	0.00	1,700.00	Design #2 (Wellbore #1)	ISCWSA MWD	
				Fixed:v2:standard declination	
2	1,700.00	12,335.86	Design #2 (Wellbore #1)	ISCWSA MWD	
				Fixed:v2:standard declination	

HP

Planning Report

Database:	EDM 5000.16 Single User Db	Local Co-ordinate Reference:	Well GEORGENE 2828-01H
Company:	VERDAD RESOURCES	TVD Reference:	RKB = 24' @ 5040.00usft (RIG)
Project:	WATTENBERG FIELD	MD Reference:	RKB = 24' @ 5040.00usft (RIG)
Site:	2N-64W-28 GEORGENE PAD	North Reference:	True
Well:	GEORGENE 2828-01H	Survey Calculation Method:	Minimum Curvature
Wellbore:	Wellbore #1		
Design:	Design #2		

Plan Sections										
Measured Depth (usft)	Inclination (°)	Azimuth (°)	Vertical Depth (usft)	+N/-S (usft)	+E/-W (usft)	Dogleg Rate (°/100usft)	Build Rate (°/100usft)	Turn Rate (°/100usft)	TFO (°)	Target
0.00	0.00	0.00	0.00	0.00	0.00	0.00	0.00	0.00	0.00	
200.00	0.00	0.00	200.00	0.00	0.00	0.00	0.00	0.00	0.00	
526.50	6.53	102.55	525.79	-4.04	18.14	2.00	2.00	0.00	102.55	
6,412.65	6.53	102.55	6,373.76	-149.49	671.54	0.00	0.00	0.00	0.00	
7,482.72	90.00	297.55	7,080.00	161.73	120.21	9.00	7.80	-15.42	-164.91	
7,829.22	90.00	297.55	7,080.00	322.00	-187.00	0.00	0.00	0.00	0.00	GEORGENE 2828-01
9,012.42	90.00	262.49	7,080.00	524.63	-1,334.06	2.96	0.00	-2.96	-90.00	
9,065.81	90.00	262.49	7,080.00	517.65	-1,386.99	0.00	0.00	0.00	0.00	GEORGENE 2828-01
9,142.50	90.00	264.02	7,080.00	508.64	-1,463.14	2.00	0.00	2.00	90.01	
10,473.12	90.00	264.02	7,080.00	370.00	-2,786.53	0.00	0.00	0.00	0.00	GEORGENE 2828-01
10,542.75	90.00	265.41	7,080.00	363.59	-2,855.86	2.00	0.00	2.00	90.00	
11,900.24	90.00	265.41	7,080.00	255.00	-4,209.00	0.00	0.00	0.00	0.00	GEORGENE 2828-01
12,004.89	90.00	267.50	7,080.00	248.54	-4,313.44	2.00	0.00	2.00	90.00	
12,335.86	90.00	267.50	7,080.00	234.13	-4,644.10	0.00	0.00	0.00	0.00	GEORGENE 2828-01

HP

Planning Report

Database:	EDM 5000.16 Single User Db	Local Co-ordinate Reference:	Well GEORGENE 2828-01H
Company:	VERDAD RESOURCES	TVD Reference:	RKB = 24' @ 5040.00usft (RIG)
Project:	WATTENBERG FIELD	MD Reference:	RKB = 24' @ 5040.00usft (RIG)
Site:	2N-64W-28 GEORGENE PAD	North Reference:	True
Well:	GEORGENE 2828-01H	Survey Calculation Method:	Minimum Curvature
Wellbore:	Wellbore #1		
Design:	Design #2		

Planned Survey									
Measured Depth (usft)	Inclination (°)	Azimuth (°)	Vertical Depth (usft)	+N/-S (usft)	+E/-W (usft)	Vertical Section (usft)	Dogleg Rate (°/100usft)	Build Rate (°/100usft)	Turn Rate (°/100usft)
0.00	0.00	0.00	0.00	0.00	0.00	0.00	0.00	0.00	0.00
100.00	0.00	0.00	100.00	0.00	0.00	0.00	0.00	0.00	0.00
200.00	0.00	0.00	200.00	0.00	0.00	0.00	0.00	0.00	0.00
Begin Nudge @ 200.00ft									
300.00	2.00	102.55	299.98	-0.38	1.70	-1.71	2.00	2.00	0.00
400.00	4.00	102.55	399.84	-1.52	6.81	-6.83	2.00	2.00	0.00
500.00	6.00	102.55	499.45	-3.41	15.32	-15.37	2.00	2.00	0.00
526.50	6.53	102.55	525.79	-4.04	18.14	-18.20	2.00	2.00	0.00
Hold Tangent @ 526.50ft									
600.00	6.53	102.55	598.82	-5.85	26.30	-26.39	0.00	0.00	0.00
700.00	6.53	102.55	698.17	-8.33	37.40	-37.52	0.00	0.00	0.00
800.00	6.53	102.55	797.52	-10.80	48.50	-48.66	0.00	0.00	0.00
900.00	6.53	102.55	896.87	-13.27	59.60	-59.80	0.00	0.00	0.00
1,000.00	6.53	102.55	996.22	-15.74	70.70	-70.93	0.00	0.00	0.00
1,100.00	6.53	102.55	1,095.57	-18.21	81.80	-82.07	0.00	0.00	0.00
1,200.00	6.53	102.55	1,194.92	-20.68	92.90	-93.21	0.00	0.00	0.00
1,300.00	6.53	102.55	1,294.28	-23.15	104.00	-104.34	0.00	0.00	0.00
1,400.00	6.53	102.55	1,393.63	-25.62	115.11	-115.48	0.00	0.00	0.00
1,500.00	6.53	102.55	1,492.98	-28.09	126.21	-126.62	0.00	0.00	0.00
1,600.00	6.53	102.55	1,592.33	-30.57	137.31	-137.75	0.00	0.00	0.00
1,700.00	6.53	102.55	1,691.68	-33.04	148.41	-148.89	0.00	0.00	0.00
1,708.37	6.53	102.55	1,700.00	-33.24	149.34	-149.82	0.00	0.00	0.00
9 5/8"									
1,800.00	6.53	102.55	1,791.03	-35.51	159.51	-160.03	0.00	0.00	0.00
1,900.00	6.53	102.55	1,890.38	-37.98	170.61	-171.17	0.00	0.00	0.00
2,000.00	6.53	102.55	1,989.73	-40.45	181.71	-182.30	0.00	0.00	0.00
2,100.00	6.53	102.55	2,089.09	-42.92	192.81	-193.44	0.00	0.00	0.00
2,200.00	6.53	102.55	2,188.44	-45.39	203.91	-204.58	0.00	0.00	0.00
2,300.00	6.53	102.55	2,287.79	-47.86	215.01	-215.71	0.00	0.00	0.00
2,400.00	6.53	102.55	2,387.14	-50.33	226.11	-226.85	0.00	0.00	0.00
2,500.00	6.53	102.55	2,486.49	-52.81	237.21	-237.99	0.00	0.00	0.00
2,600.00	6.53	102.55	2,585.84	-55.28	248.31	-249.12	0.00	0.00	0.00
2,700.00	6.53	102.55	2,685.19	-57.75	259.41	-260.26	0.00	0.00	0.00
2,800.00	6.53	102.55	2,784.54	-60.22	270.51	-271.40	0.00	0.00	0.00
2,900.00	6.53	102.55	2,883.90	-62.69	281.61	-282.53	0.00	0.00	0.00
3,000.00	6.53	102.55	2,983.25	-65.16	292.72	-293.67	0.00	0.00	0.00
3,100.00	6.53	102.55	3,082.60	-67.63	303.82	-304.81	0.00	0.00	0.00
3,200.00	6.53	102.55	3,181.95	-70.10	314.92	-315.94	0.00	0.00	0.00
3,300.00	6.53	102.55	3,281.30	-72.57	326.02	-327.08	0.00	0.00	0.00
3,400.00	6.53	102.55	3,380.65	-75.05	337.12	-338.22	0.00	0.00	0.00
3,500.00	6.53	102.55	3,480.00	-77.52	348.22	-349.36	0.00	0.00	0.00
3,600.00	6.53	102.55	3,579.35	-79.99	359.32	-360.49	0.00	0.00	0.00
3,700.00	6.53	102.55	3,678.71	-82.46	370.42	-371.63	0.00	0.00	0.00
3,800.00	6.53	102.55	3,778.06	-84.93	381.52	-382.77	0.00	0.00	0.00
3,900.00	6.53	102.55	3,877.41	-87.40	392.62	-393.90	0.00	0.00	0.00
4,000.00	6.53	102.55	3,976.76	-89.87	403.72	-405.04	0.00	0.00	0.00
4,100.00	6.53	102.55	4,076.11	-92.34	414.82	-416.18	0.00	0.00	0.00
4,200.00	6.53	102.55	4,175.46	-94.81	425.92	-427.31	0.00	0.00	0.00
4,300.00	6.53	102.55	4,274.81	-97.29	437.02	-438.45	0.00	0.00	0.00
4,400.00	6.53	102.55	4,374.16	-99.76	448.12	-449.59	0.00	0.00	0.00
4,500.00	6.53	102.55	4,473.52	-102.23	459.22	-460.72	0.00	0.00	0.00
4,600.00	6.53	102.55	4,572.87	-104.70	470.33	-471.86	0.00	0.00	0.00
4,700.00	6.53	102.55	4,672.22	-107.17	481.43	-483.00	0.00	0.00	0.00

HP

Planning Report

Database:	EDM 5000.16 Single User Db	Local Co-ordinate Reference:	Well GEORGENE 2828-01H
Company:	VERDAD RESOURCES	TVD Reference:	RKB = 24' @ 5040.00usft (RIG)
Project:	WATTENBERG FIELD	MD Reference:	RKB = 24' @ 5040.00usft (RIG)
Site:	2N-64W-28 GEORGENE PAD	North Reference:	True
Well:	GEORGENE 2828-01H	Survey Calculation Method:	Minimum Curvature
Wellbore:	Wellbore #1		
Design:	Design #2		

Planned Survey									
Measured Depth (usft)	Inclination (°)	Azimuth (°)	Vertical Depth (usft)	+N/-S (usft)	+E/-W (usft)	Vertical Section (usft)	Dogleg Rate (°/100usft)	Build Rate (°/100usft)	Turn Rate (°/100usft)
4,800.00	6.53	102.55	4,771.57	-109.64	492.53	-494.13	0.00	0.00	0.00
4,900.00	6.53	102.55	4,870.92	-112.11	503.63	-505.27	0.00	0.00	0.00
5,000.00	6.53	102.55	4,970.27	-114.58	514.73	-516.41	0.00	0.00	0.00
5,100.00	6.53	102.55	5,069.62	-117.05	525.83	-527.55	0.00	0.00	0.00
5,200.00	6.53	102.55	5,168.97	-119.53	536.93	-538.68	0.00	0.00	0.00
5,300.00	6.53	102.55	5,268.33	-122.00	548.03	-549.82	0.00	0.00	0.00
5,400.00	6.53	102.55	5,367.68	-124.47	559.13	-560.96	0.00	0.00	0.00
5,500.00	6.53	102.55	5,467.03	-126.94	570.23	-572.09	0.00	0.00	0.00
5,600.00	6.53	102.55	5,566.38	-129.41	581.33	-583.23	0.00	0.00	0.00
5,700.00	6.53	102.55	5,665.73	-131.88	592.43	-594.37	0.00	0.00	0.00
5,800.00	6.53	102.55	5,765.08	-134.35	603.53	-605.50	0.00	0.00	0.00
5,900.00	6.53	102.55	5,864.43	-136.82	614.63	-616.64	0.00	0.00	0.00
6,000.00	6.53	102.55	5,963.78	-139.29	625.73	-627.78	0.00	0.00	0.00
6,100.00	6.53	102.55	6,063.14	-141.77	636.83	-638.91	0.00	0.00	0.00
6,200.00	6.53	102.55	6,162.49	-144.24	647.94	-650.05	0.00	0.00	0.00
6,300.00	6.53	102.55	6,261.84	-146.71	659.04	-661.19	0.00	0.00	0.00
6,400.00	6.53	102.55	6,361.19	-149.18	670.14	-672.32	0.00	0.00	0.00
6,412.65	6.53	102.55	6,373.76	-149.49	671.54	-673.73	0.00	0.00	0.00
KOP @ 6412.65ft :: DLS = 9°/100'									
6,500.00	2.30	345.04	6,460.93	-148.88	675.94	-678.13	9.00	-4.84	-134.53
6,600.00	10.69	306.58	6,560.22	-141.39	667.96	-670.03	9.00	8.39	-38.46
6,700.00	19.63	302.32	6,656.65	-126.86	646.28	-648.13	9.00	8.94	-4.26
6,800.00	28.60	300.67	6,747.83	-105.63	611.42	-612.96	9.00	8.98	-1.65
6,900.00	37.59	299.76	6,831.52	-78.23	564.26	-565.39	9.00	8.99	-0.91
7,000.00	46.58	299.16	6,905.66	-45.33	505.95	-506.58	9.00	8.99	-0.60
7,100.00	55.57	298.71	6,968.43	-7.75	437.93	-437.99	9.00	8.99	-0.44
7,200.00	64.57	298.36	7,018.27	33.60	361.86	-361.31	9.00	8.99	-0.36
7,300.00	73.56	298.05	7,053.97	77.69	279.64	-278.42	9.00	9.00	-0.31
7,400.00	82.56	297.77	7,074.63	123.44	193.27	-191.37	9.00	9.00	-0.28
7,482.72	90.00	297.55	7,080.00	161.73	120.21	-117.74	9.00	9.00	-0.27
End Build @ 7482.72ft									
7,500.00	90.00	297.55	7,080.00	169.73	104.89	-102.30	0.00	0.00	0.00
7,600.00	90.00	297.55	7,080.00	215.98	16.23	-12.95	0.00	0.00	0.00
7,700.00	90.00	297.55	7,080.00	262.23	-72.43	76.41	0.00	0.00	0.00
7,800.00	90.00	297.55	7,080.00	308.48	-161.09	165.76	0.00	0.00	0.00
7,829.22	90.00	297.55	7,080.00	322.00	-187.00	191.87	0.00	0.00	0.00
Begin Turn for AC @ 7829.22ft									
7,900.00	90.00	295.45	7,080.00	353.58	-250.34	255.68	2.96	0.00	-2.96
8,000.00	90.00	292.49	7,080.00	394.21	-341.70	347.65	2.96	0.00	-2.96
8,100.00	90.00	289.53	7,080.00	430.05	-435.05	441.53	2.96	0.00	-2.96
8,200.00	90.00	286.56	7,080.00	461.02	-530.12	537.06	2.96	0.00	-2.96
8,300.00	90.00	283.60	7,080.00	487.04	-626.66	633.99	2.96	0.00	-2.96
8,400.00	90.00	280.64	7,080.00	508.02	-724.42	732.05	2.96	0.00	-2.96
8,500.00	90.00	277.67	7,080.00	523.93	-823.14	831.00	2.96	0.00	-2.96
8,600.00	90.00	274.71	7,080.00	534.71	-922.55	930.56	2.96	0.00	-2.96
8,700.00	90.00	271.74	7,080.00	540.34	-1,022.38	1,030.46	2.96	0.00	-2.96
8,800.00	90.00	268.78	7,080.00	540.80	-1,122.36	1,130.45	2.96	0.00	-2.96
8,900.00	90.00	265.82	7,080.00	536.09	-1,222.24	1,230.24	2.96	0.00	-2.96
9,000.00	90.00	262.85	7,080.00	526.22	-1,321.74	1,329.58	2.96	0.00	-2.96
9,012.42	90.00	262.49	7,080.00	524.63	-1,334.06	1,341.87	2.96	0.00	-2.96
End Turn @ 9012.42ft									
9,065.81	90.00	262.49	7,080.00	517.65	-1,386.99	1,394.69	0.00	0.00	0.00
Begin Turn for AC @ 9065.81ft									
9,100.00	90.00	263.17	7,080.00	513.38	-1,420.91	1,428.55	2.00	0.00	2.00

HP

Planning Report

Database:	EDM 5000.16 Single User Db	Local Co-ordinate Reference:	Well GEORGENE 2828-01H
Company:	VERDAD RESOURCES	TVD Reference:	RKB = 24' @ 5040.00usft (RIG)
Project:	WATTENBERG FIELD	MD Reference:	RKB = 24' @ 5040.00usft (RIG)
Site:	2N-64W-28 GEORGENE PAD	North Reference:	True
Well:	GEORGENE 2828-01H	Survey Calculation Method:	Minimum Curvature
Wellbore:	Wellbore #1		
Design:	Design #2		

Planned Survey									
Measured Depth (usft)	Inclination (°)	Azimuth (°)	Vertical Depth (usft)	+N/-S (usft)	+E/-W (usft)	Vertical Section (usft)	Dogleg Rate (°/100usft)	Build Rate (°/100usft)	Turn Rate (°/100usft)
9,142.49	90.00	264.02	7,080.00	508.64	-1,463.14	1,470.70	2.00	0.00	2.00
End Turn @ 9142.49ft									
9,200.00	90.00	264.02	7,080.00	502.65	-1,520.34	1,527.79	0.00	0.00	0.00
9,300.00	90.00	264.02	7,080.00	492.23	-1,619.79	1,627.08	0.00	0.00	0.00
9,400.00	90.00	264.02	7,080.00	481.81	-1,719.25	1,726.37	0.00	0.00	0.00
9,500.00	90.00	264.02	7,080.00	471.39	-1,818.70	1,825.65	0.00	0.00	0.00
9,600.00	90.00	264.02	7,080.00	460.97	-1,918.16	1,924.94	0.00	0.00	0.00
9,700.00	90.00	264.02	7,080.00	450.55	-2,017.61	2,024.22	0.00	0.00	0.00
9,800.00	90.00	264.02	7,080.00	440.13	-2,117.07	2,123.51	0.00	0.00	0.00
9,900.00	90.00	264.02	7,080.00	429.71	-2,216.53	2,222.80	0.00	0.00	0.00
10,000.00	90.00	264.02	7,080.00	419.30	-2,315.98	2,322.08	0.00	0.00	0.00
10,100.00	90.00	264.02	7,080.00	408.88	-2,415.44	2,421.37	0.00	0.00	0.00
10,200.00	90.00	264.02	7,080.00	398.46	-2,514.89	2,520.65	0.00	0.00	0.00
10,300.00	90.00	264.02	7,080.00	388.04	-2,614.35	2,619.94	0.00	0.00	0.00
10,400.00	90.00	264.02	7,080.00	377.62	-2,713.80	2,719.23	0.00	0.00	0.00
10,473.12	90.00	264.02	7,080.00	370.00	-2,786.53	2,791.83	0.00	0.00	0.00
Begin Turn for AC @ 10473.12ft									
10,500.00	90.00	264.56	7,080.00	367.33	-2,813.27	2,818.53	2.00	0.00	2.00
10,542.75	90.00	265.41	7,080.00	363.59	-2,855.86	2,861.05	2.00	0.00	2.00
End Turn @ 10542.75ft									
10,600.00	90.00	265.41	7,080.00	359.01	-2,912.93	2,918.04	0.00	0.00	0.00
10,700.00	90.00	265.41	7,080.00	351.01	-3,012.61	3,017.59	0.00	0.00	0.00
10,800.00	90.00	265.41	7,080.00	343.01	-3,112.28	3,117.13	0.00	0.00	0.00
10,900.00	90.00	265.41	7,080.00	335.01	-3,211.96	3,216.68	0.00	0.00	0.00
11,000.00	90.00	265.41	7,080.00	327.01	-3,311.64	3,316.23	0.00	0.00	0.00
11,100.00	90.00	265.41	7,080.00	319.01	-3,411.32	3,415.77	0.00	0.00	0.00
11,200.00	90.00	265.41	7,080.00	311.01	-3,511.00	3,515.32	0.00	0.00	0.00
11,300.00	90.00	265.41	7,080.00	303.01	-3,610.68	3,614.87	0.00	0.00	0.00
11,400.00	90.00	265.41	7,080.00	295.02	-3,710.36	3,714.41	0.00	0.00	0.00
11,500.00	90.00	265.41	7,080.00	287.02	-3,810.04	3,813.96	0.00	0.00	0.00
11,600.00	90.00	265.41	7,080.00	279.02	-3,909.72	3,913.51	0.00	0.00	0.00
11,700.00	90.00	265.41	7,080.00	271.02	-4,009.40	4,013.05	0.00	0.00	0.00
11,800.00	90.00	265.41	7,080.00	263.02	-4,109.08	4,112.60	0.00	0.00	0.00
11,900.00	90.00	265.41	7,080.00	255.02	-4,208.76	4,212.15	0.00	0.00	0.00
11,900.24	90.00	265.41	7,080.00	255.00	-4,209.00	4,212.39	0.00	0.00	0.00
Begin Turn for AC @ 11900.24ft									
12,000.00	90.00	267.41	7,080.00	248.75	-4,308.56	4,311.84	2.00	0.00	2.00
12,004.89	90.00	267.50	7,080.00	248.54	-4,313.44	4,316.72	2.00	0.00	2.00
End Turn @ 12004.89ft									
12,100.00	90.00	267.50	7,080.00	244.40	-4,408.46	4,411.67	0.00	0.00	0.00
12,200.00	90.00	267.50	7,080.00	240.04	-4,508.37	4,511.49	0.00	0.00	0.00
12,300.00	90.00	267.50	7,080.00	235.69	-4,608.27	4,611.32	0.00	0.00	0.00
12,335.86	90.00	267.50	7,080.00	234.13	-4,644.10	4,647.12	0.00	0.00	0.00
TD Well @ 12335.86ft									

Casing Points				
Measured Depth (usft)	Vertical Depth (usft)	Name	Casing Diameter (")	Hole Diameter (")
1,708.37	1,700.00	9 5/8"	9-5/8	13-1/2

HP

Planning Report

Database:	EDM 5000.16 Single User Db	Local Co-ordinate Reference:	Well GEORGENE 2828-01H
Company:	VERDAD RESOURCES	TVD Reference:	RKB = 24' @ 5040.00usft (RIG)
Project:	WATTENBERG FIELD	MD Reference:	RKB = 24' @ 5040.00usft (RIG)
Site:	2N-64W-28 GEORGENE PAD	North Reference:	True
Well:	GEORGENE 2828-01H	Survey Calculation Method:	Minimum Curvature
Wellbore:	Wellbore #1		
Design:	Design #2		

Plan Annotations				
Measured Depth (usft)	Vertical Depth (usft)	Local Coordinates		Comment
		+N/-S (usft)	+E/-W (usft)	
200.00	200.00	0.00	0.00	Begin Nudge @ 200.00ft
526.50	525.79	-4.04	18.14	Hold Tangent @ 526.50ft
6,412.65	6,373.76	-149.49	671.54	KOP @ 6412.65ft :: DLS = 9°/100'
7,482.72	7,080.00	161.73	120.21	End Build @ 7482.72ft
7,829.22	7,080.00	322.00	-187.00	Begin Turn for AC @ 7829.22ft
9,012.42	7,080.00	524.63	-1,334.06	End Turn @ 9012.42ft
9,065.81	7,080.00	517.65	-1,386.99	Begin Turn for AC @ 9065.81ft
9,142.49	7,080.00	508.64	-1,463.14	End Turn @ 9142.49ft
10,473.12	7,080.00	370.00	-2,786.53	Begin Turn for AC @ 10473.12ft
10,542.75	7,080.00	363.59	-2,855.86	End Turn @ 10542.75ft
11,900.24	7,080.00	255.00	-4,209.00	Begin Turn for AC @ 11900.24ft
12,004.89	7,080.00	248.54	-4,313.44	End Turn @ 12004.89ft
12,335.86	7,080.00	234.13	-4,644.10	TD Well @ 12335.86ft