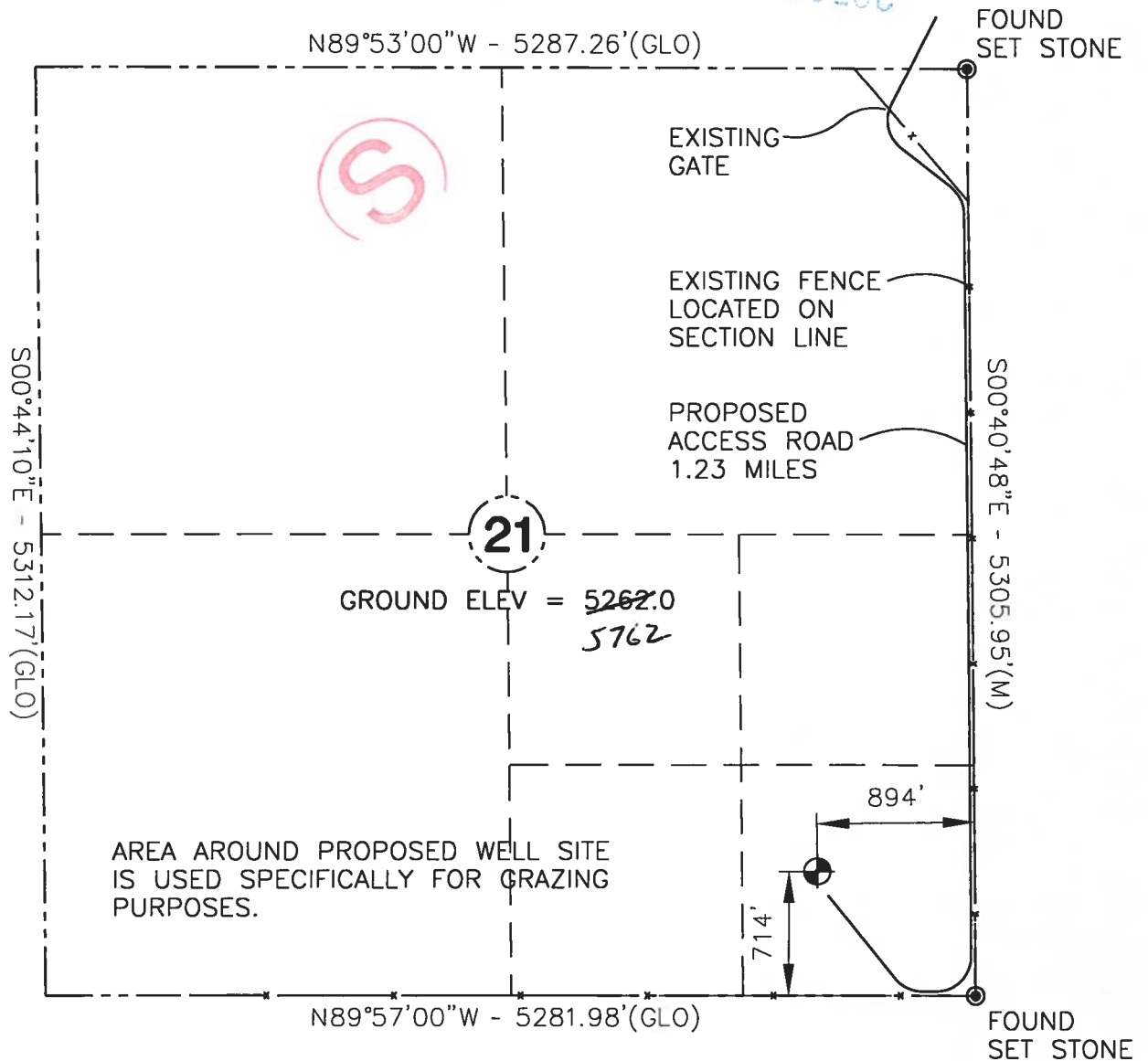




NORTH WELLINGTON 21-1
NIELSON & ASSOCIATES
SE1/4 SE1/4 SECTION 21, T.11N., R.68W., 6TH P.M.
LARIMER COUNTY, COLORADO

RECEIVED
APR 15 00
COGCC

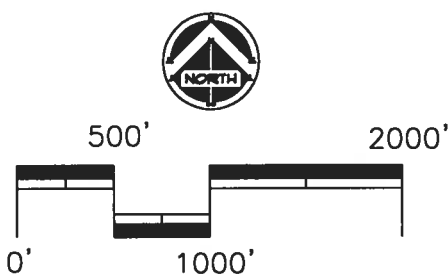


Basis of Elevation

ELEVATION BASED ON:
UNITED STATES COAST & GEODETIC
SURVEY MONUMENT "G308" 1952
LOCATED IN THE SW1/4 SW1/4
SECTION 15, T.11N., R.68W.
ELEVATION = 5960

Certificate

THIS IS TO CERTIFY THAT THE ABOVE PLAT WAS
PREPARED FROM FIELD NOTES OF ACTUAL SURVEYS
MADE BY ME OR UNDER MY SUPERVISION AND THAT
THE SAME ARE TRUE AND CORRECT TO BEST OF MY
KNOWLEDGE AND BELIEF.

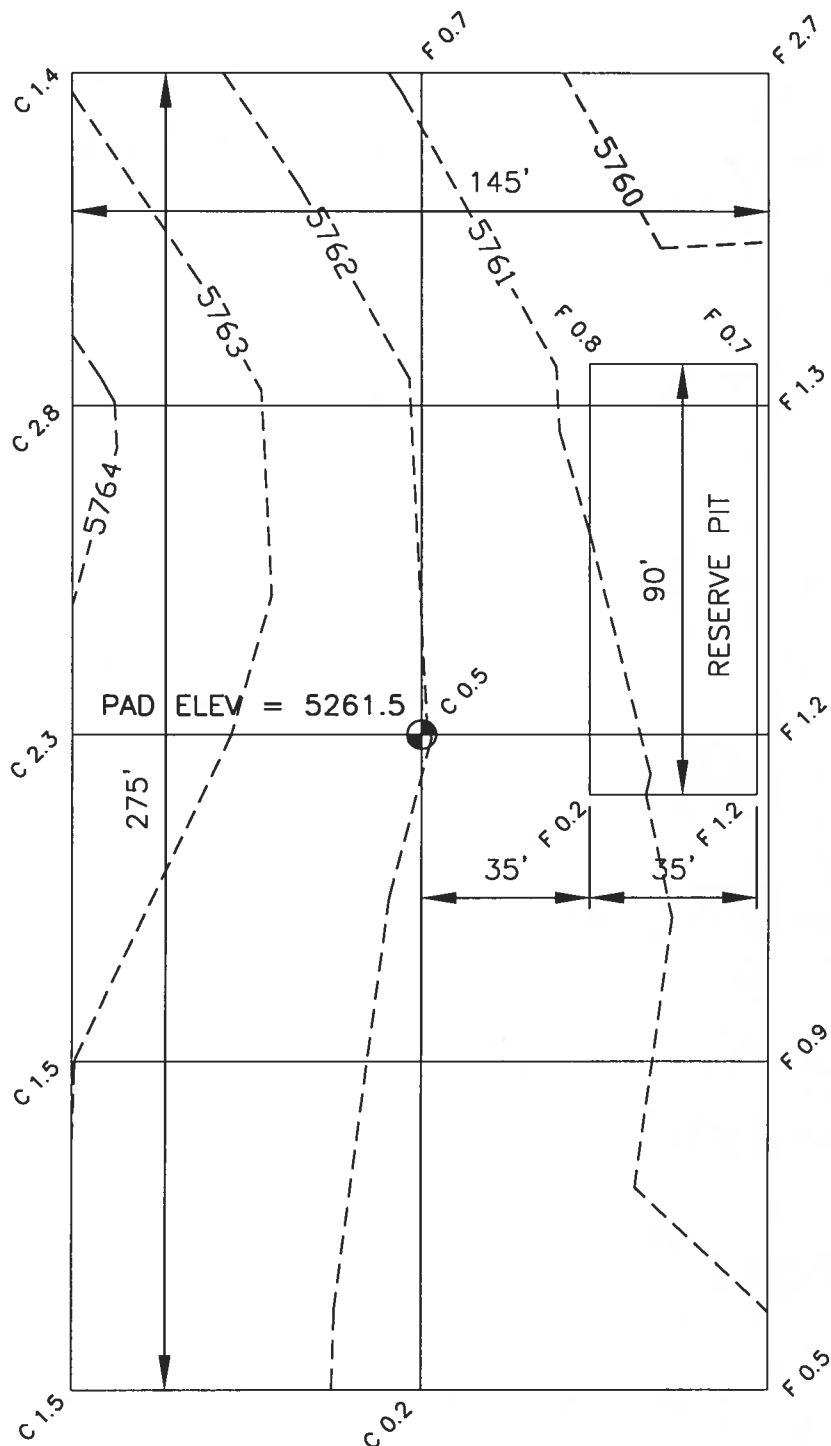


SCALE: 1" = 1000'

DATE: 04-29-99



RECEIVED
NOV-6-00
COGCC



SCALE: 1" = 40'

NORTH WELLINGTON 21-1
NIELSON & ASSOCIATES
SE1/4 SE1/4 SECTION 21, T.11N., R.68W., 6TH P.M.
LARIMER COUNTY, COLORADO
DATE SURVEYED: APRIL 24, 2000

DATE: 04-29-99