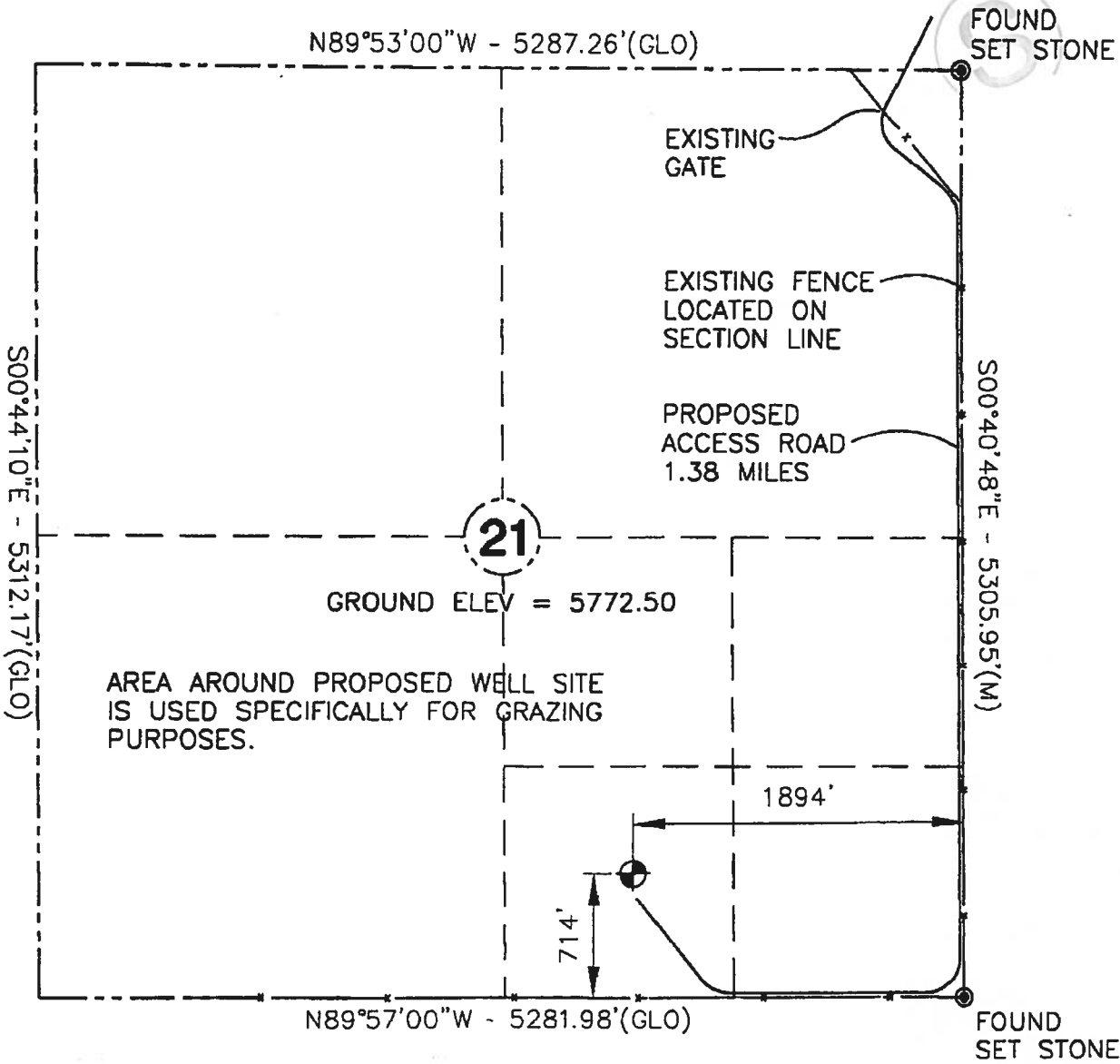


NORTH WELLINGTON 21-1
NIELSON & ASSOCIATES
SW1/4 SE1/4 SECTION 21, T.11N., R.68W., 6TH P.M.
LARIMER COUNTY, COLORADO

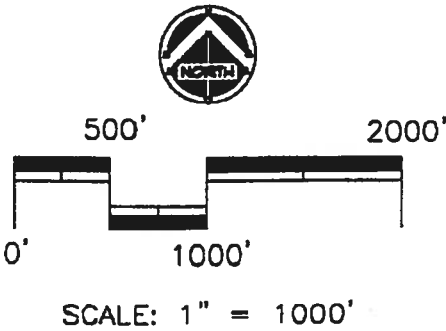
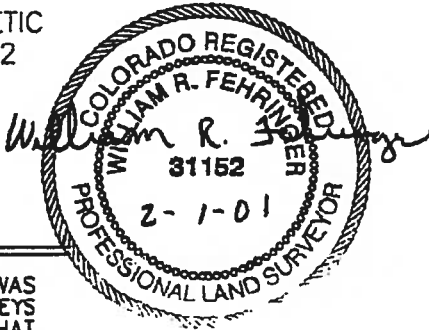


Basis of Elevation

ELEVATION BASED ON:
UNITED STATES COAST & GEODETIC
SURVEY MONUMENT "G308" 1952
LOCATED IN THE SW1/4 SW1/4
SECTION 15, T.11N., R.68W.
ELEVATION = 5960

Certificate

THIS IS TO CERTIFY THAT THE ABOVE PLAT WAS
PREPARED FROM FIELD NOTES OF ACTUAL SURVEYS
MADE BY ME OR UNDER MY SUPERVISION AND THAT
THE SAME ARE TRUE AND CORRECT TO BEST OF MY
KNOWLEDGE AND BELIEF.



DATE: 02-01-01