

Mud Properties Record											
Date / Time	Run No.	Depth (ft)	Mud Type	Density (ppg)	Viscosity (cP)	pH	Fluid Loss (cm3)	Oil / Water	Source	Total Chlorides (ppm)	K+ (%)
2020-07-23 21:34	1	1945.00	Oil Based Mud	9.2	14	N/A	19.0	68/20	Active Pit	26000	0.00
2020-07-25 17:46	1	12210.00	Oil Based Mud	9.6	13	N/A	16.4	70/19	Active Pit	27000	0.00
2020-07-26 00:11	2	12614.00	Oil Based Mud	9.6	13	N/A	16.4	70/19	Active Pit	26500	0.00

Run No.	Tool	Serial Number	Measurement	Sensor Offset (ft)	Bit Offset (ft)	Max O.D. (in)	Min I.D. (in)
1	AutoTrak Curve Steering Unit	14452346	Near Bit VSS	5.93	6.88	7.000	4.330
1	AutoTrak Curve Steering Unit	14452346	Near Bit Inclination	5.93	6.88	7.000	4.330
1	AutoTrak Curve MWD	14381973	Gamma (single)	2.75	13.05	7.000	3.250
1	AutoTrak Curve MWD	14381973	Directional (mag)	12.27	22.57	7.000	3.250
2	AutoTrak Curve Steering Unit	14262243	Near Bit Inclination	5.93	6.86	7.000	4.330
2	AutoTrak Curve Steering Unit	14262243	Near Bit VSS	5.93	6.86	7.000	4.330
2	AutoTrak Curve MWD	14371850	Gamma (single)	2.75	13.03	7.000	3.250
2	AutoTrak Curve MWD	14371850	Directional (mag)	12.27	22.55	7.000	3.250

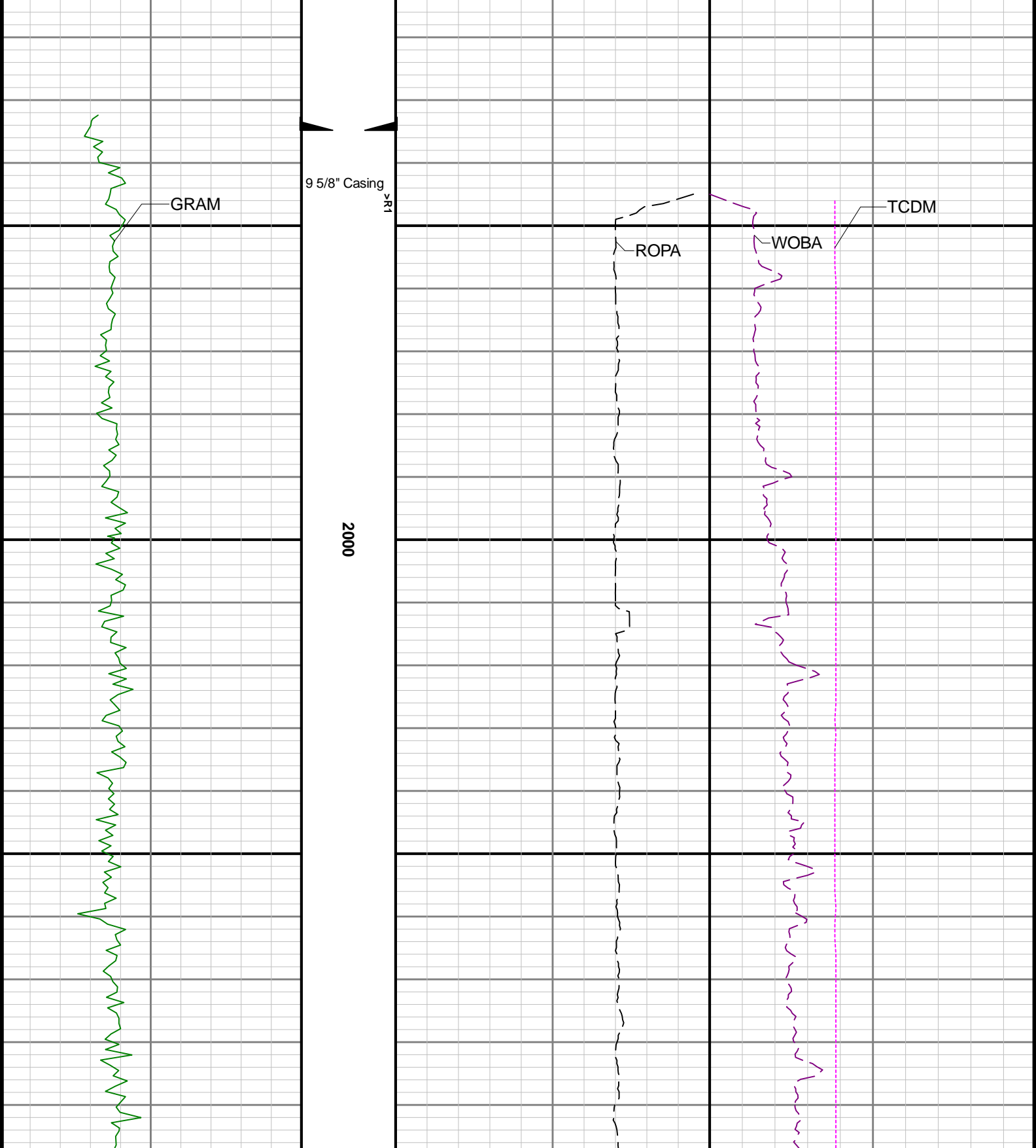
Mnemonic	Name	Description
ATC SU	AutoTrak Curve SU	Auto Trak Curve Steering Unit
ATC MWD	AutoTrak Curve MWD	Auto Trak Curve MWD
ATC LCPM	AutoTrak Curve LCPM	Auto Trak Curve LCPM

1	Depth measurements were obtained from a depth control system not supplied or operated by Baker Hughes. Due to lack of control by Baker Hughes logging engineers, depth calibrations and measurements could not be independently verified.
2	Baker Hughes LWD Run 1 and 2 utilized 6 3/4 inch NaviGamma service (Gamma Ray and Directional) behind an 8 1/2 inch bit and rotary steerable assembly from 1945 to 17514 feet MD (1945 to 6668 feet TVD).
3	The Gamma Ray Apparent (GRAM) data is presented 0 to 300 API, per the customer's request.

Number	Depth (ft)	Hole Section (in)	Run No.	Remark
1	6003.00	8.500	1	The interval from 6003 to 6030 feet MD (5634 to 5658 feet TVD) has gaps in Gamma Ray data due to tool power loss.

Presented Curves	Description	Units
ROPA	Depth Averaged ROP 3 ft Average	ft/h
WOBA	Weight On Bit 1 ft Average	klb
GRAM	Gamma Ray - Apparent - Memory 0.5 ft Average	API
TCDM	Directional Real-Time Survey Temperature	degF

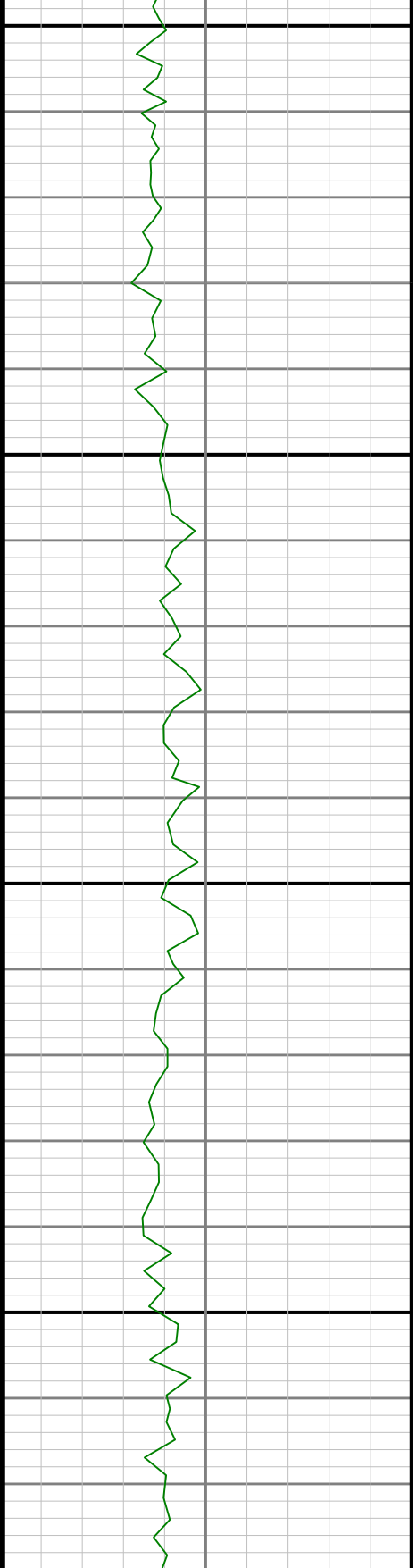
Gamma Ray - Apparent 0.5 ft Average GRAM 0 300	TVD 1:240 feet	Depth Averaged ROP 3 ft Average ROPA 1000 0	Weight On Bit, Average 1 ft Average WOBA 0 50
API		ft/h	klb
			Downhole Temperature TCDM 0 300
			degF





2100

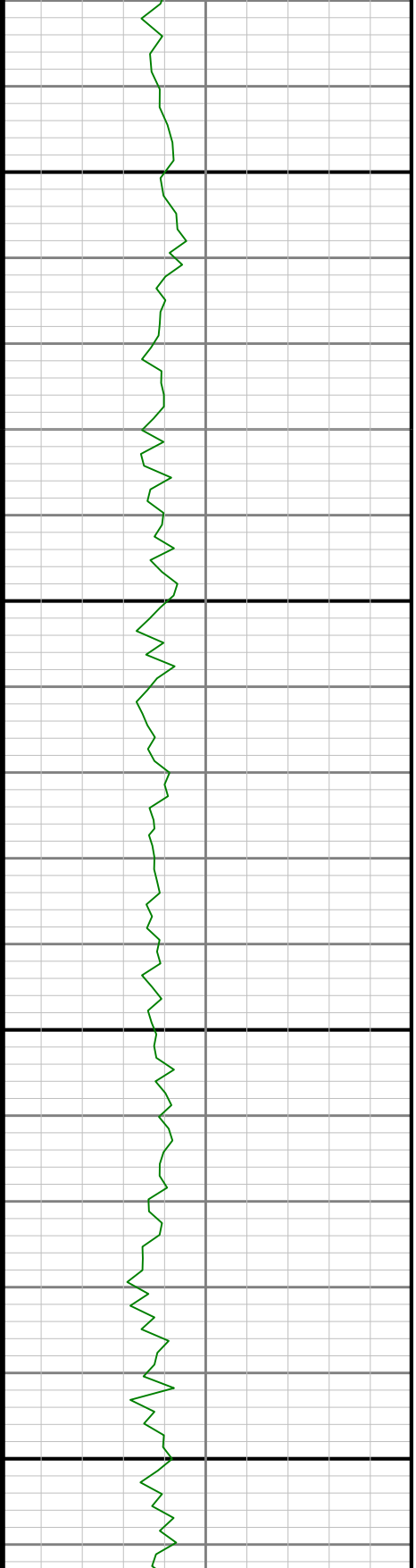
2200

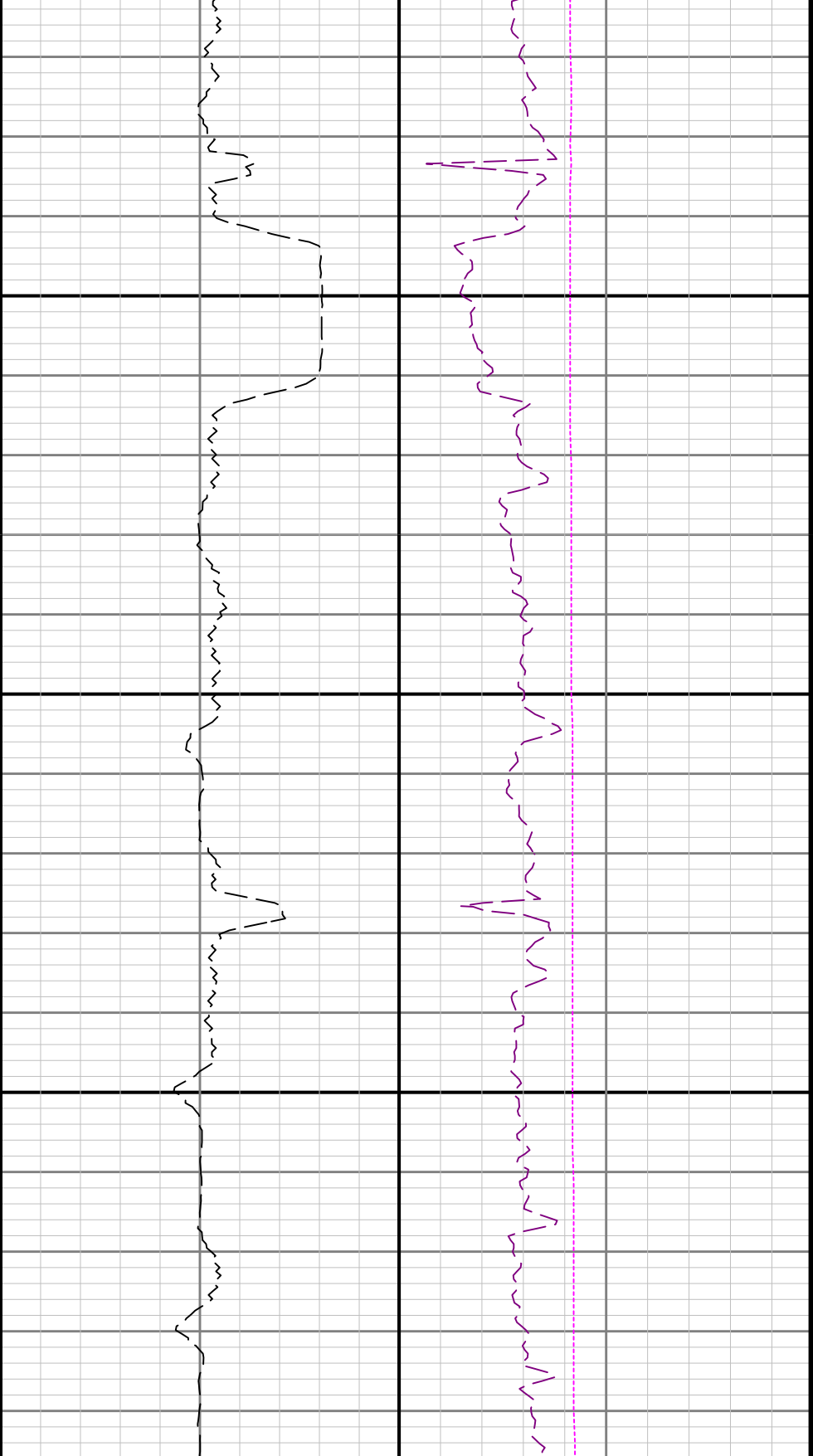




2300

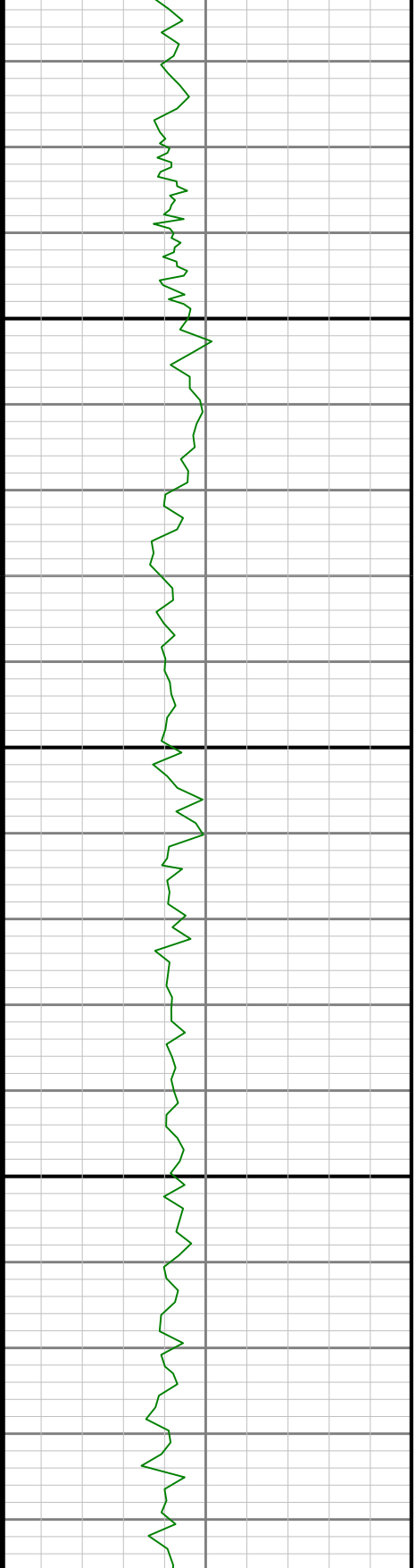
2400

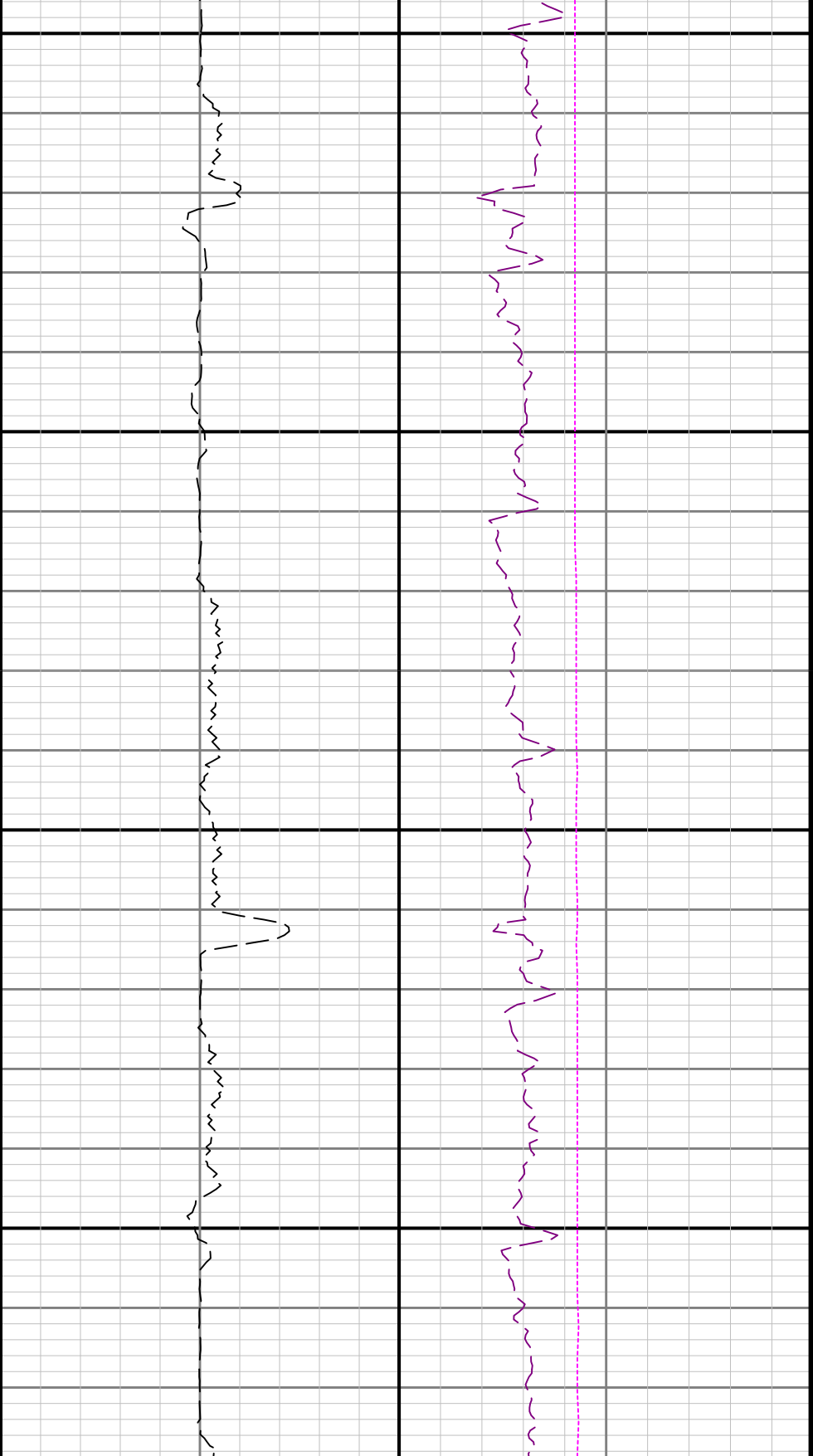




2500

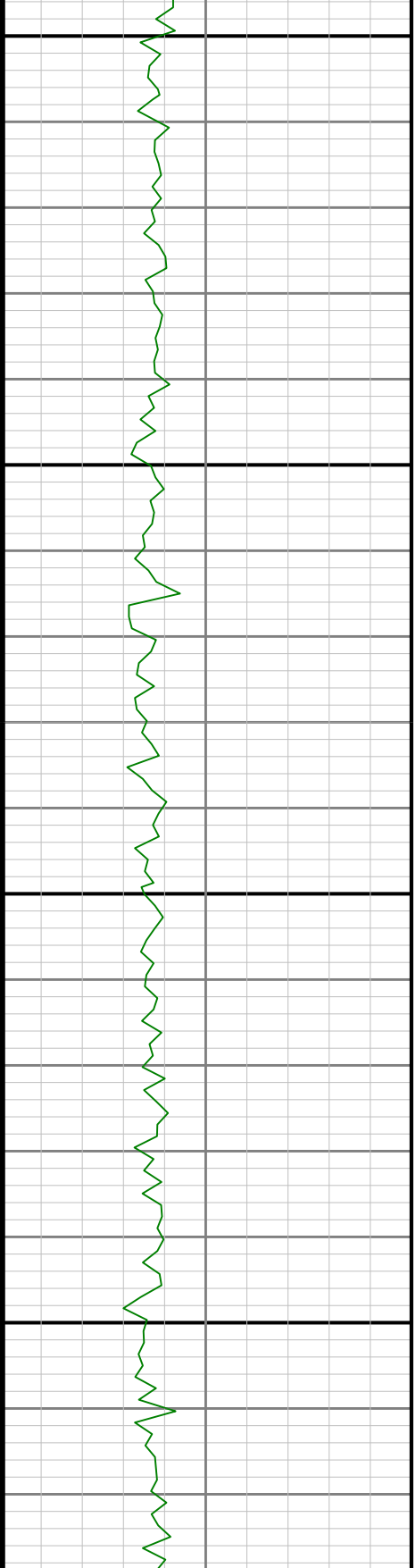
2600

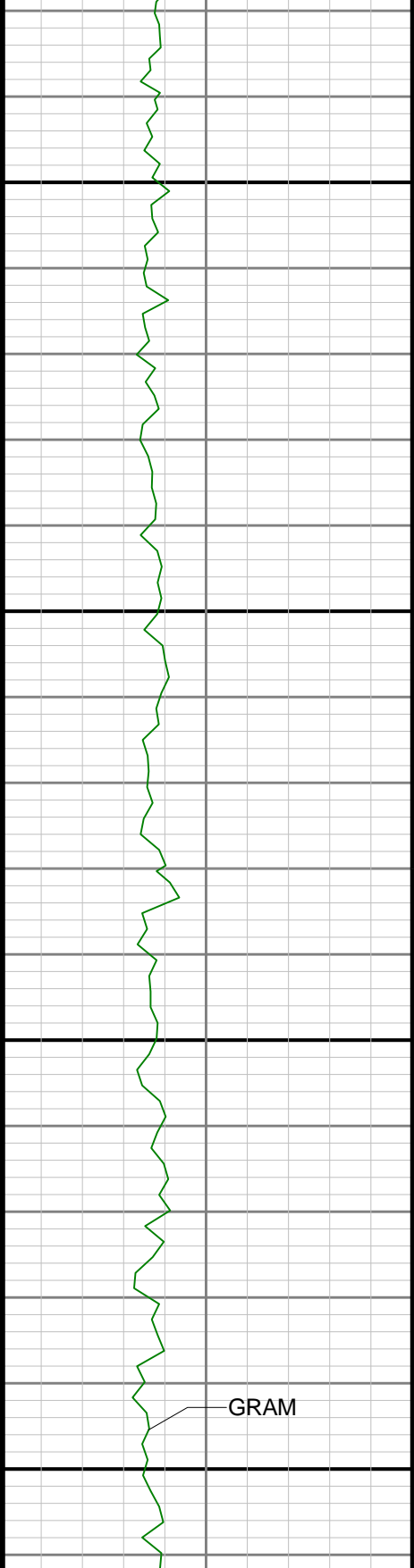




2700

2800



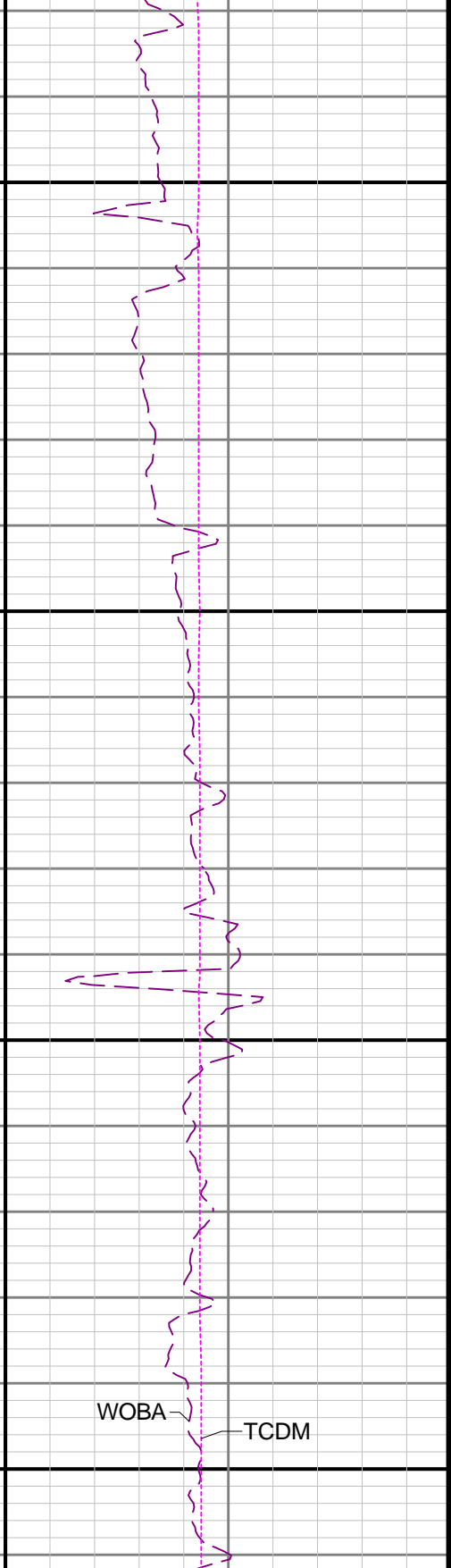


2900

3000

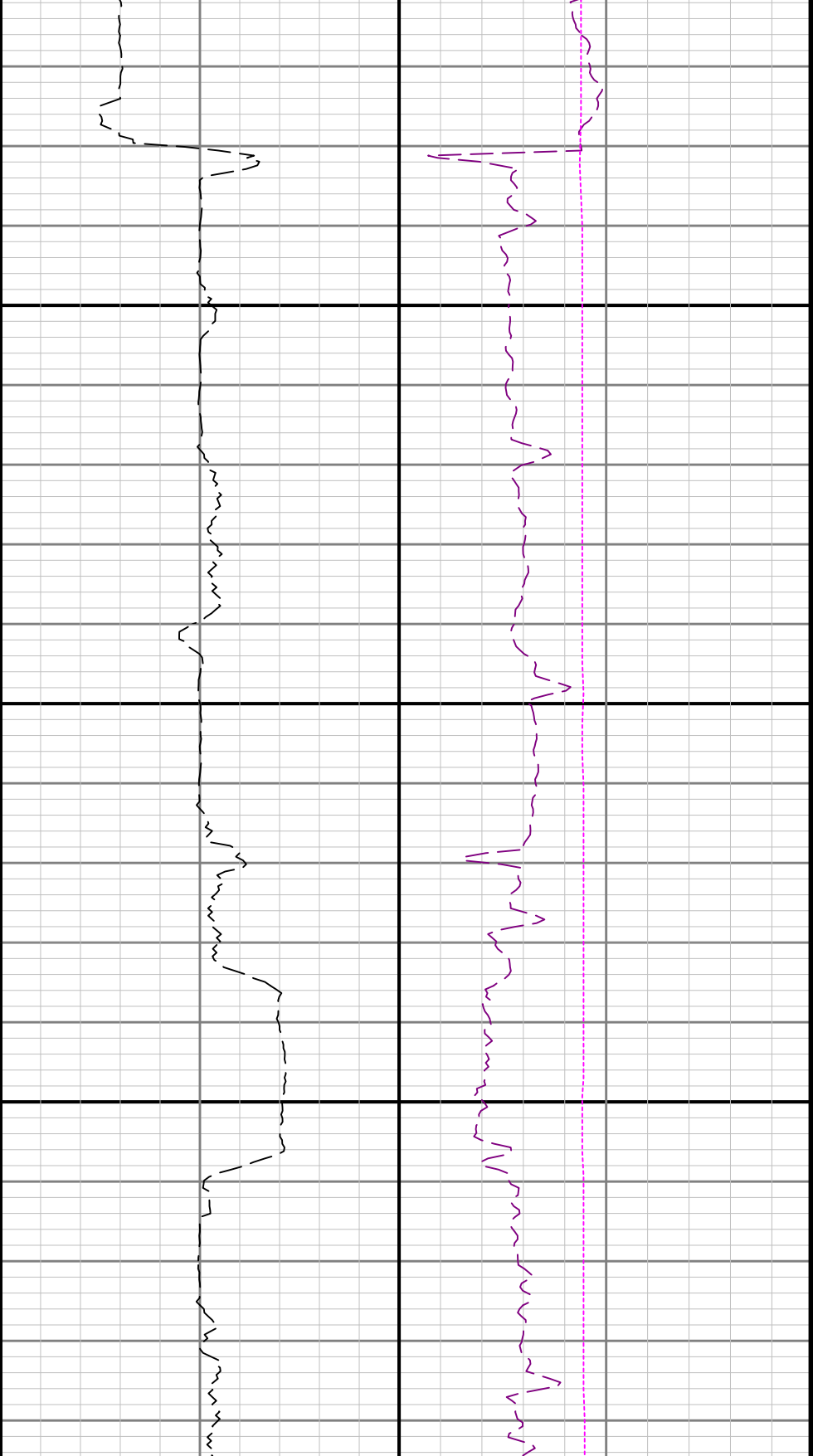


ROPA

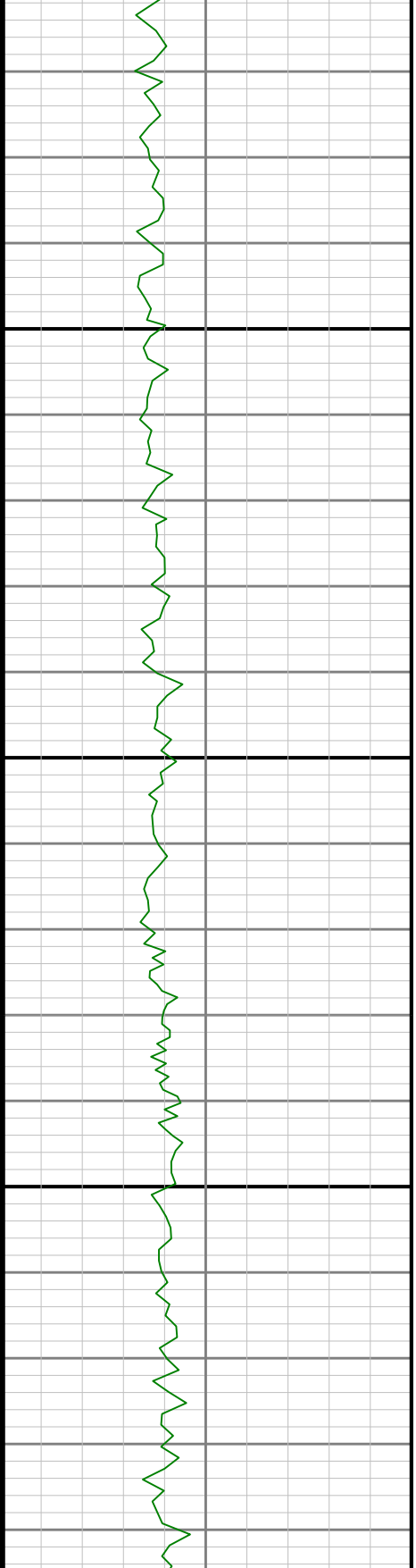


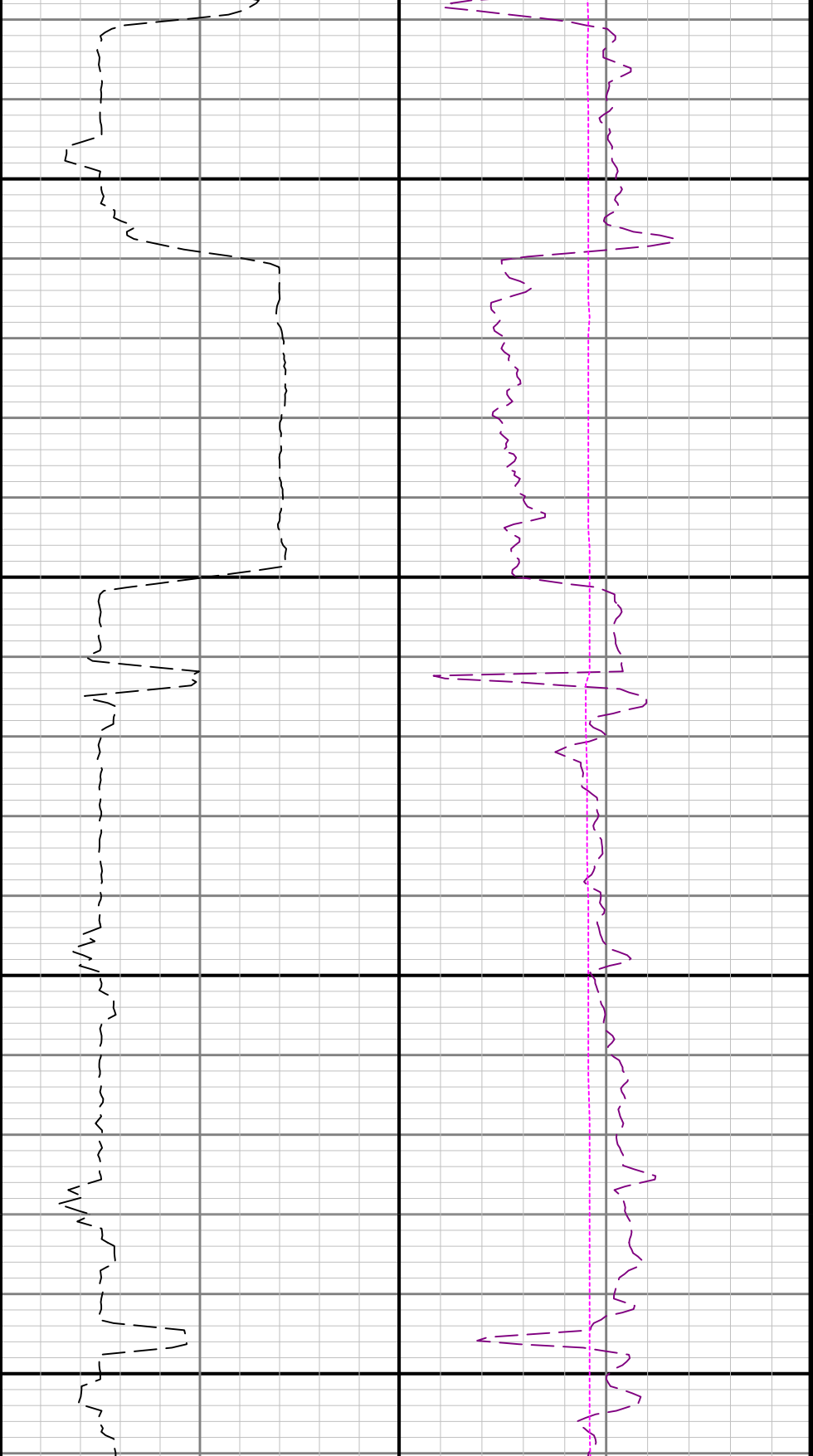
WOBA

TCDM



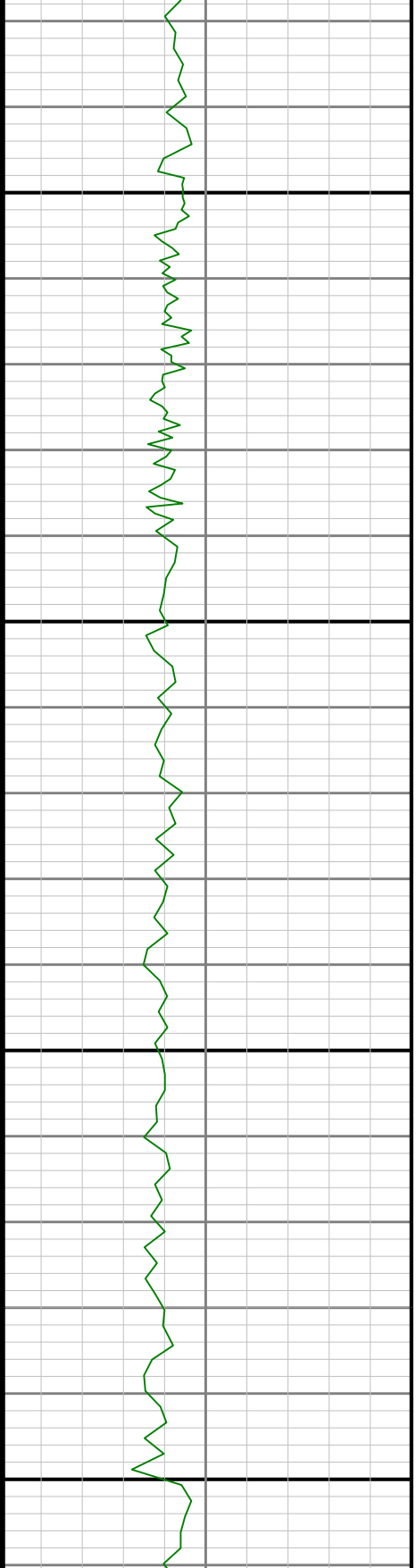
3100

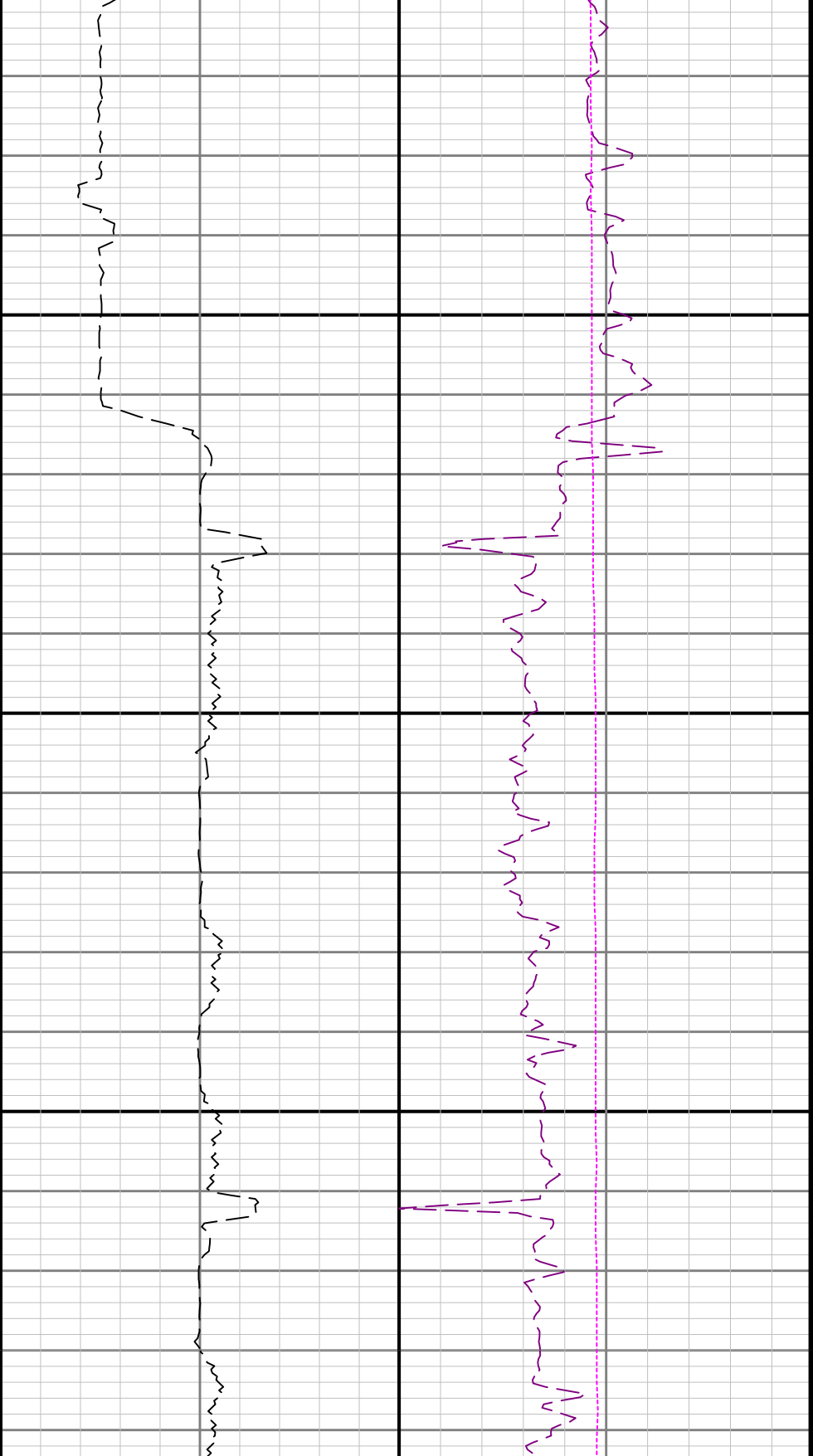




3400

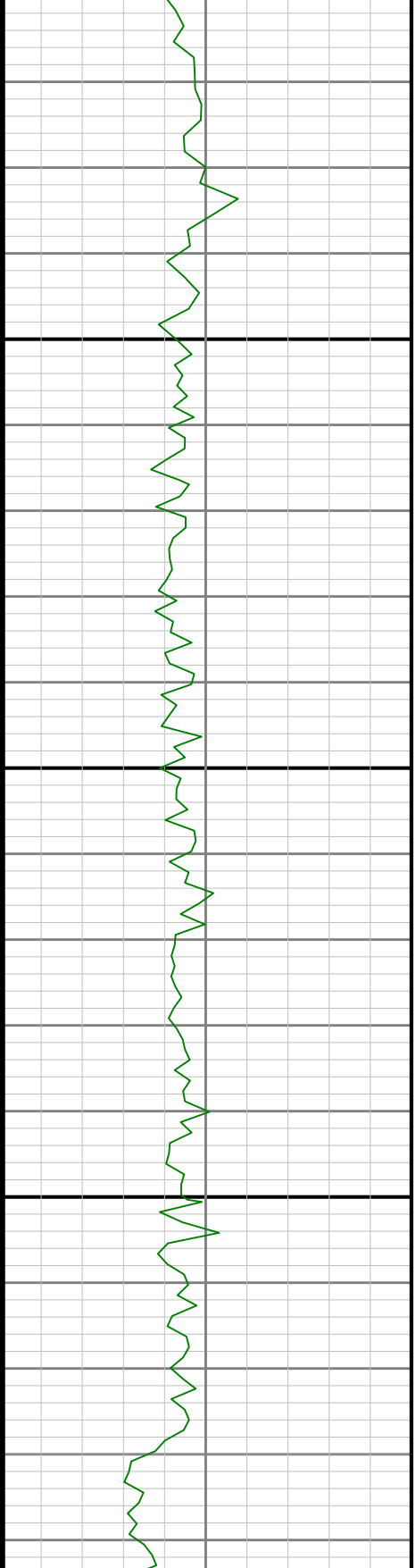
3500

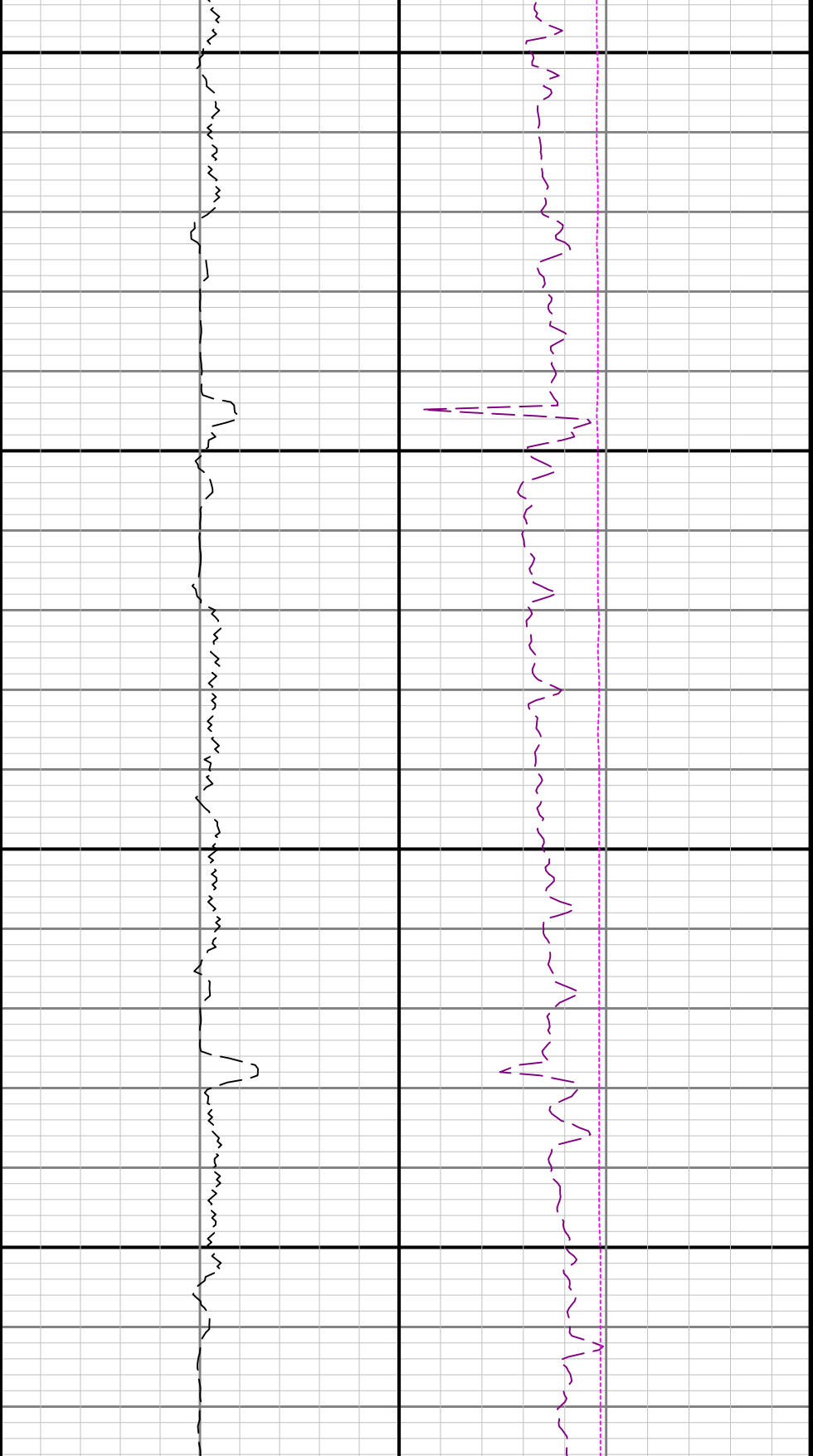




3600

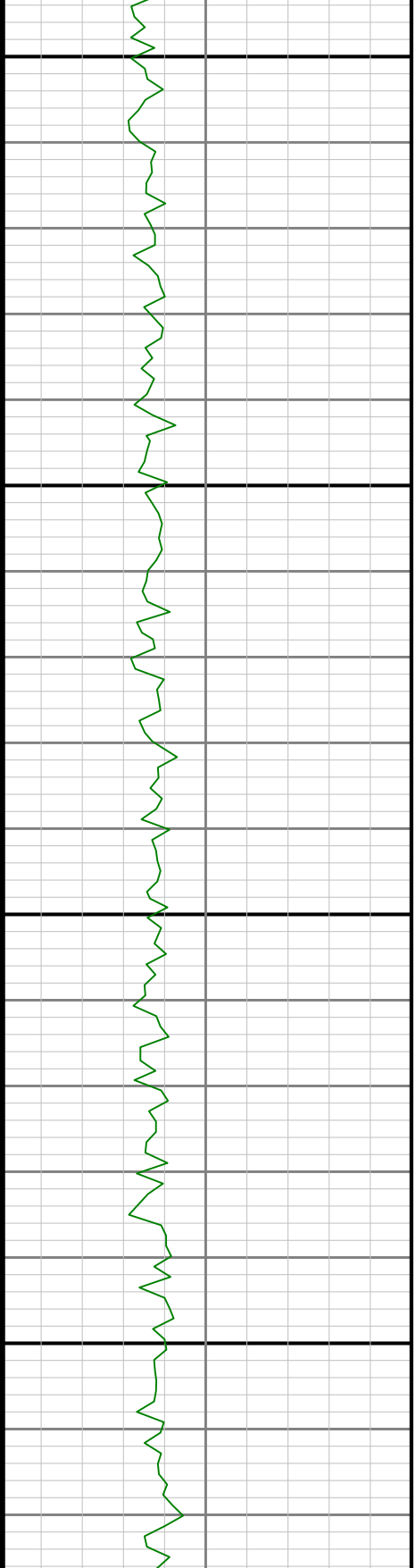
3700

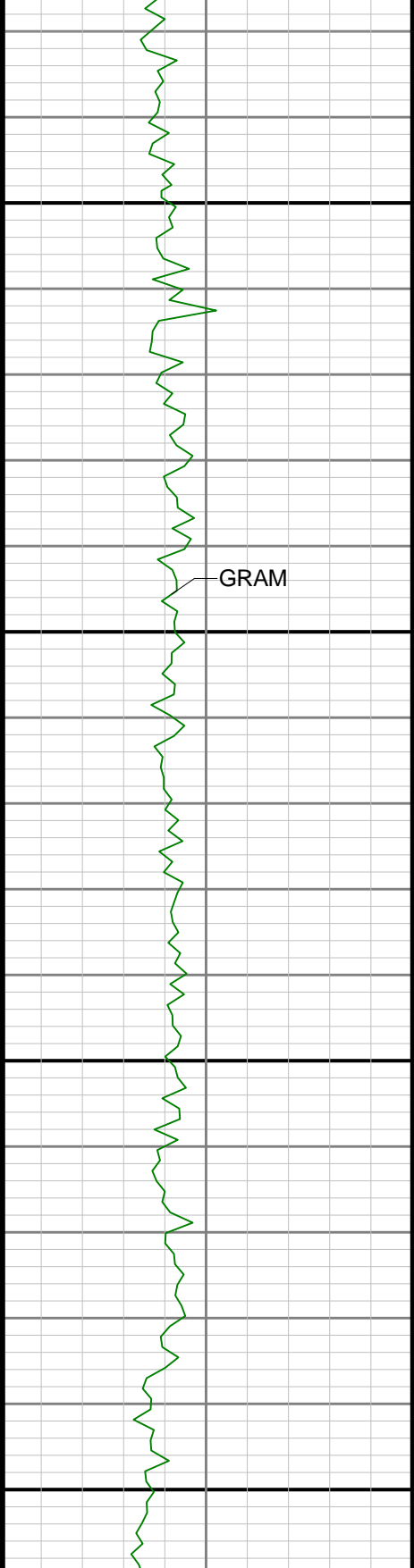




3800

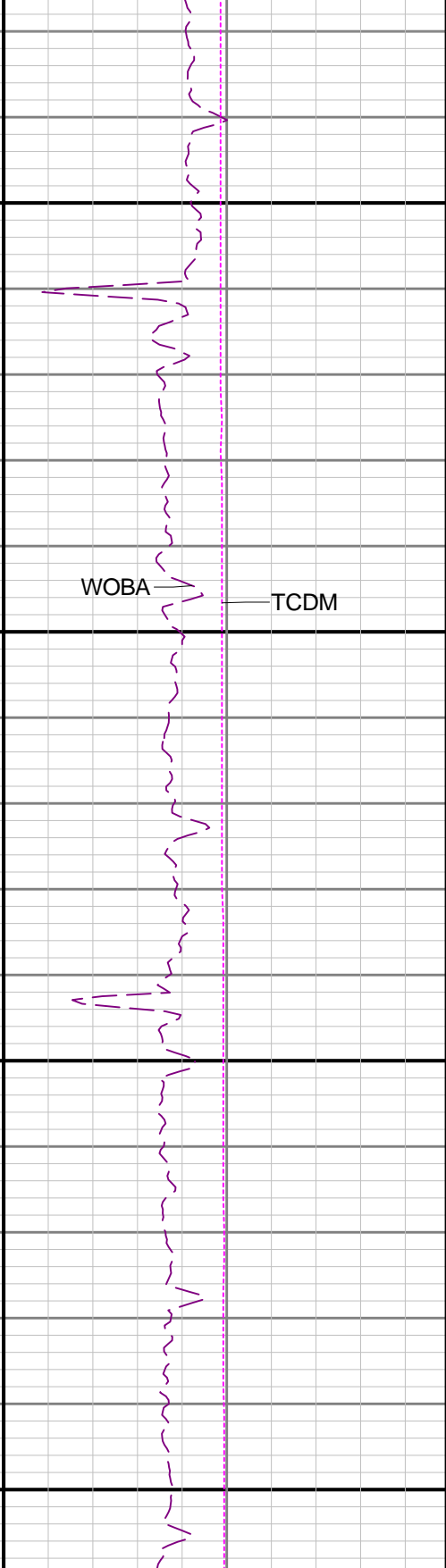
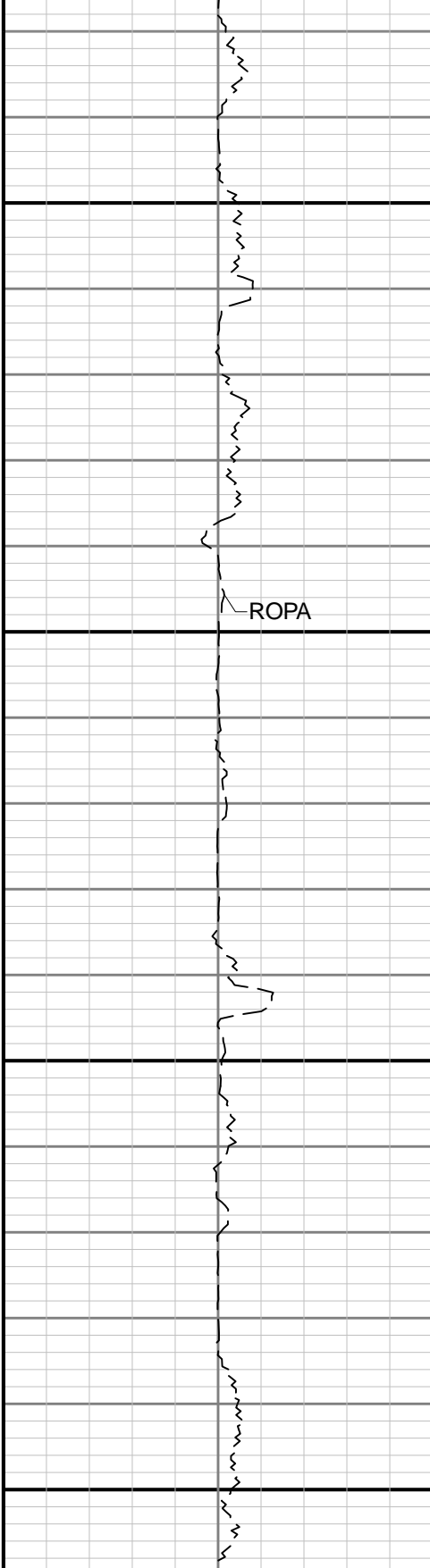
3900

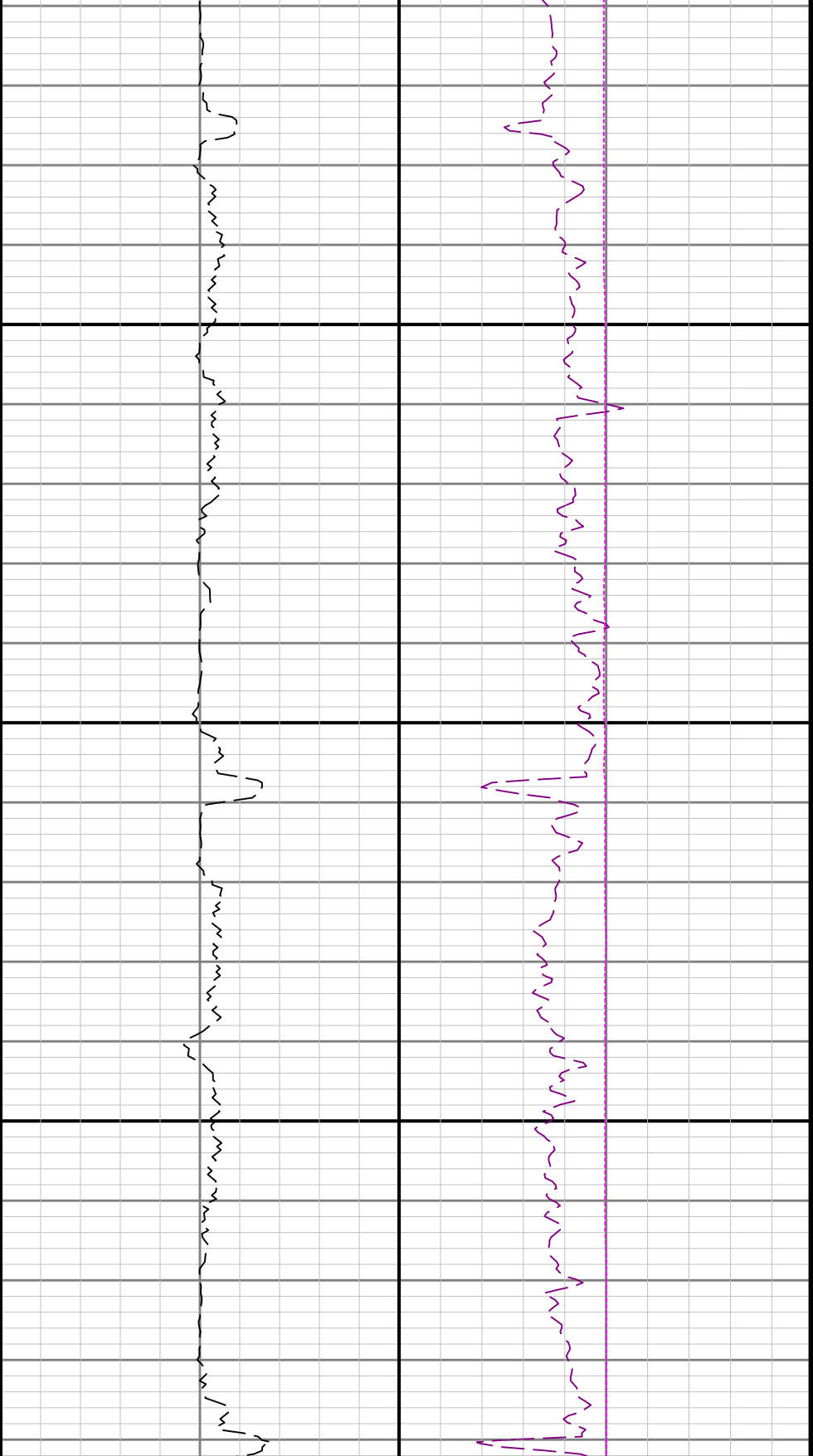




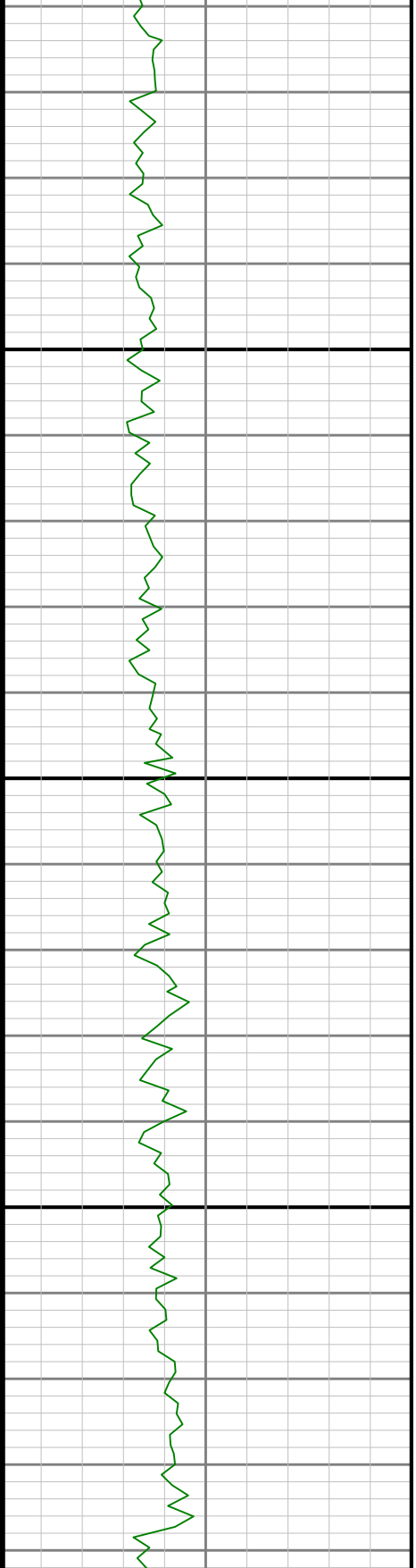
4000

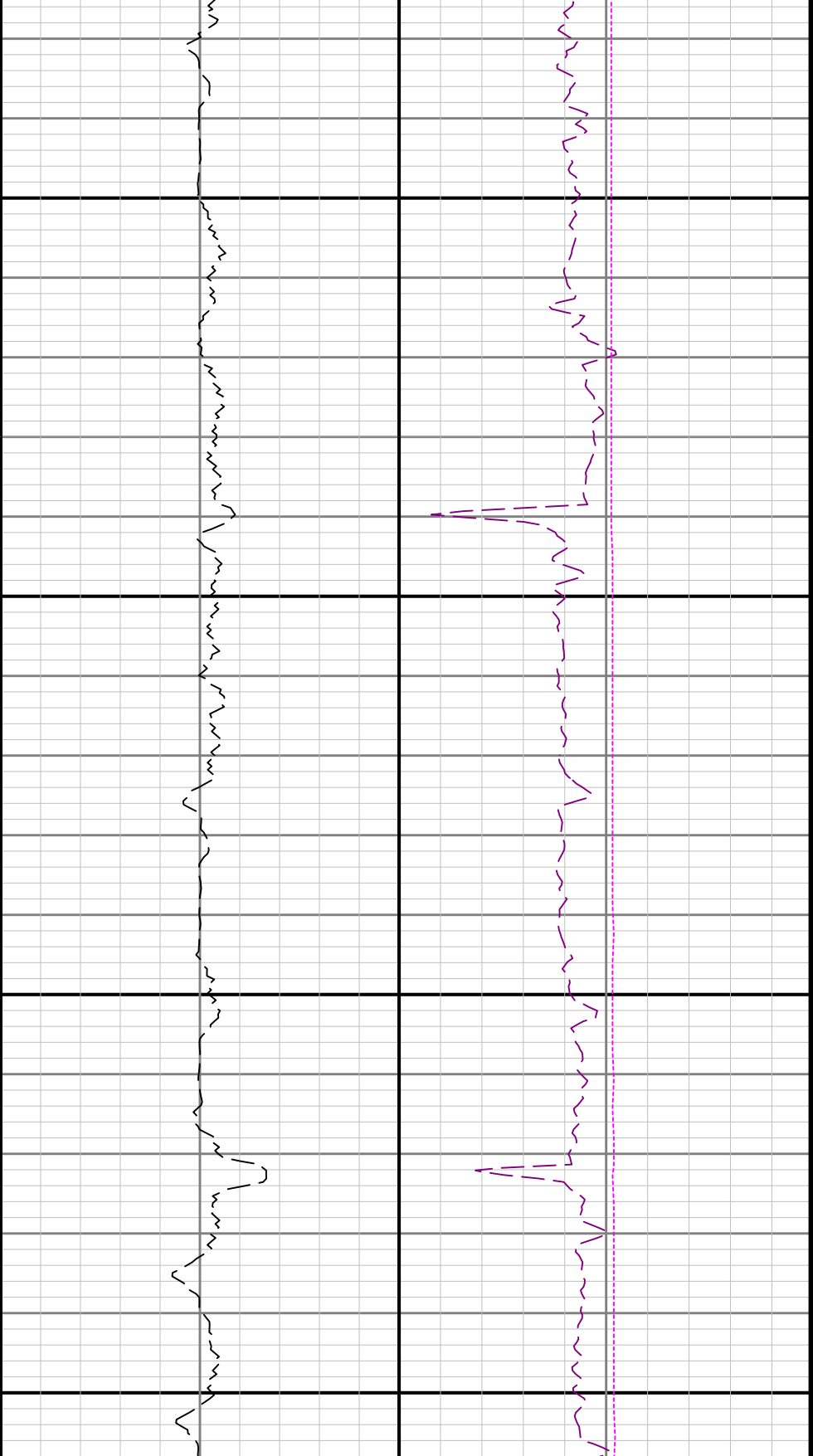
4100





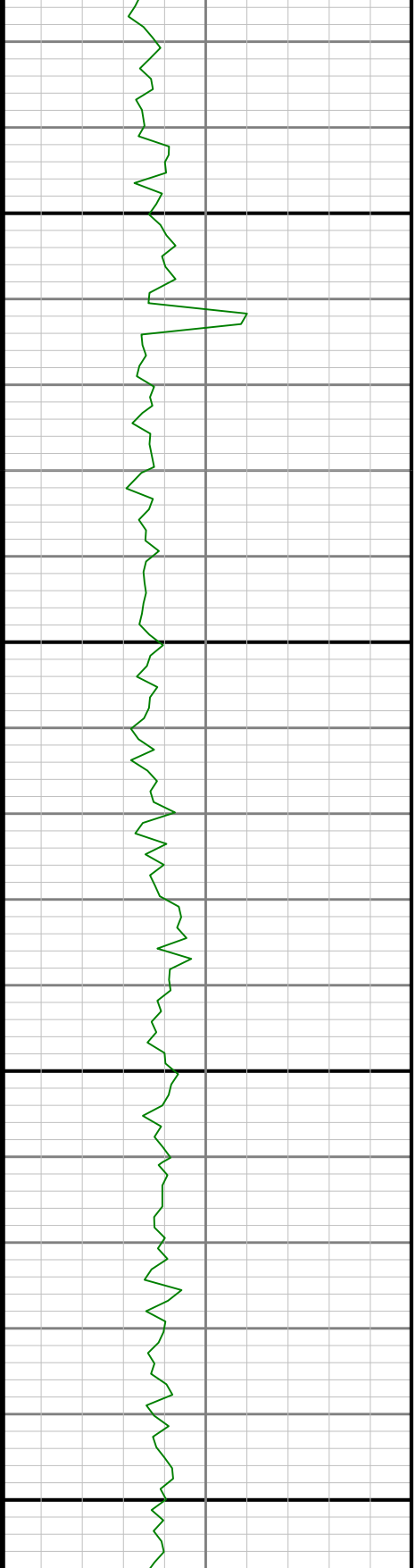
4200

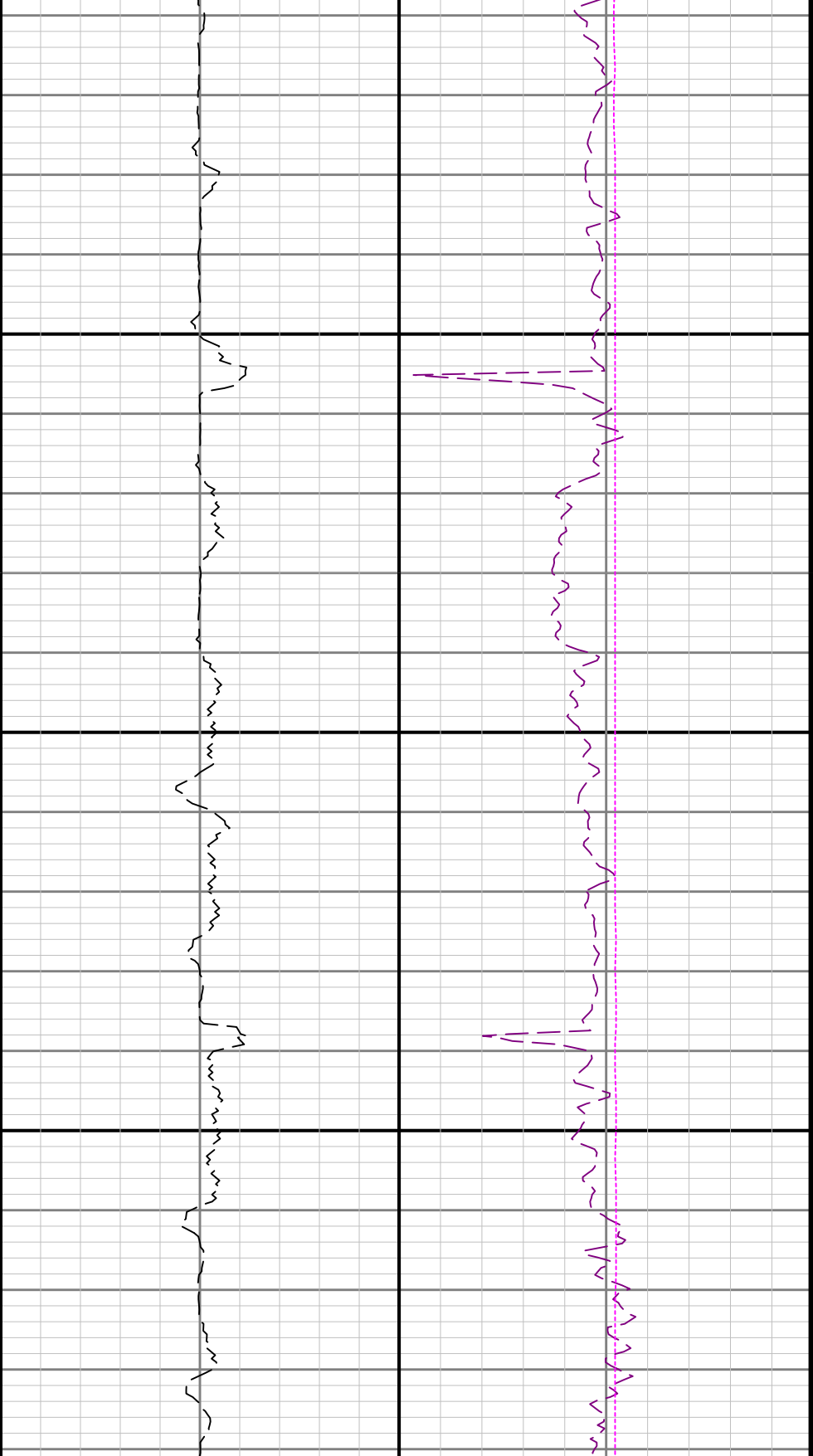




4500

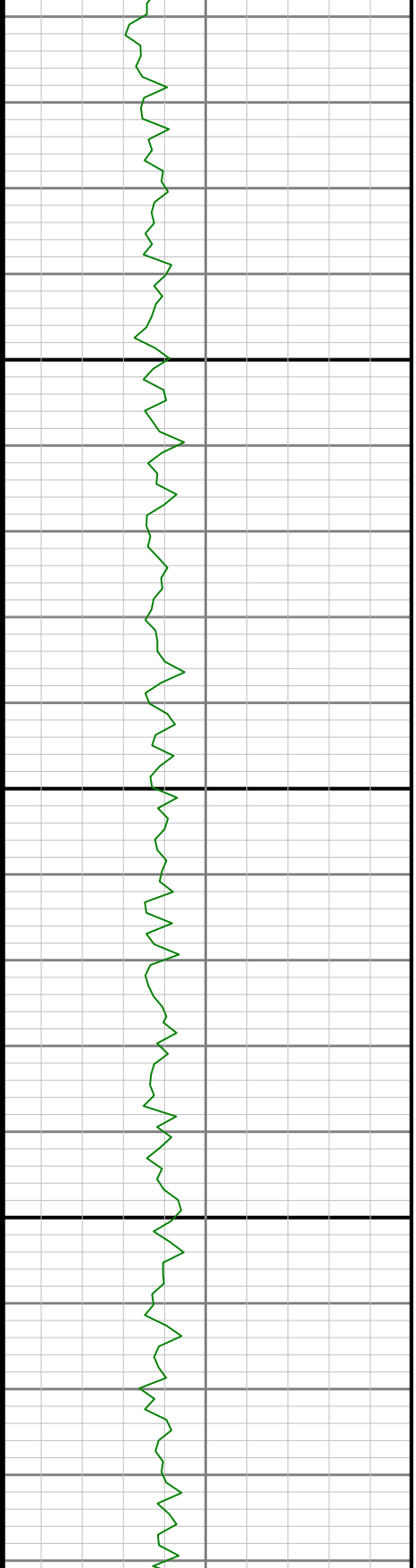
4600

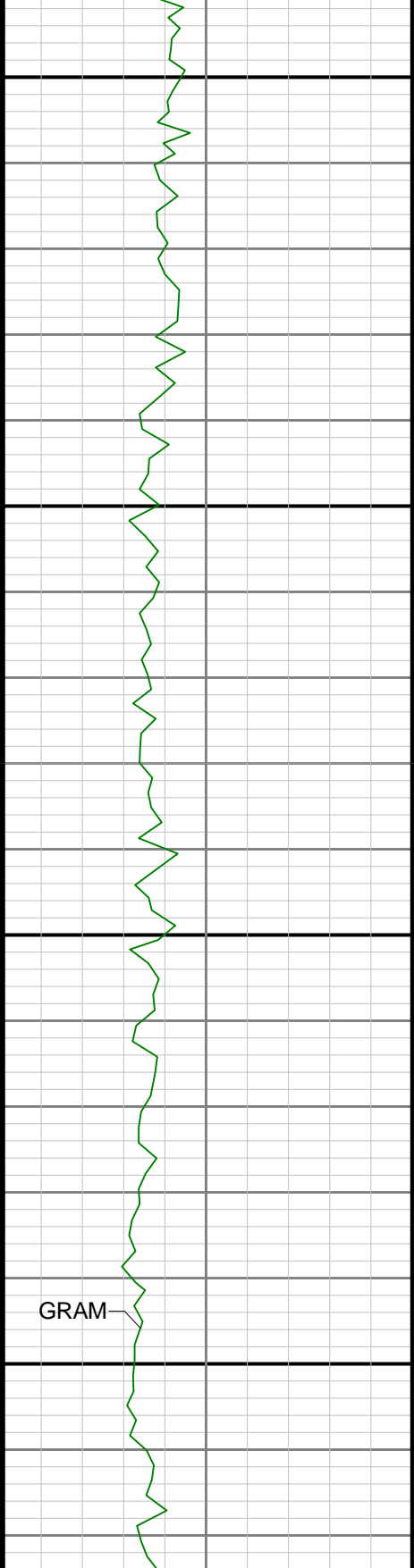




4700

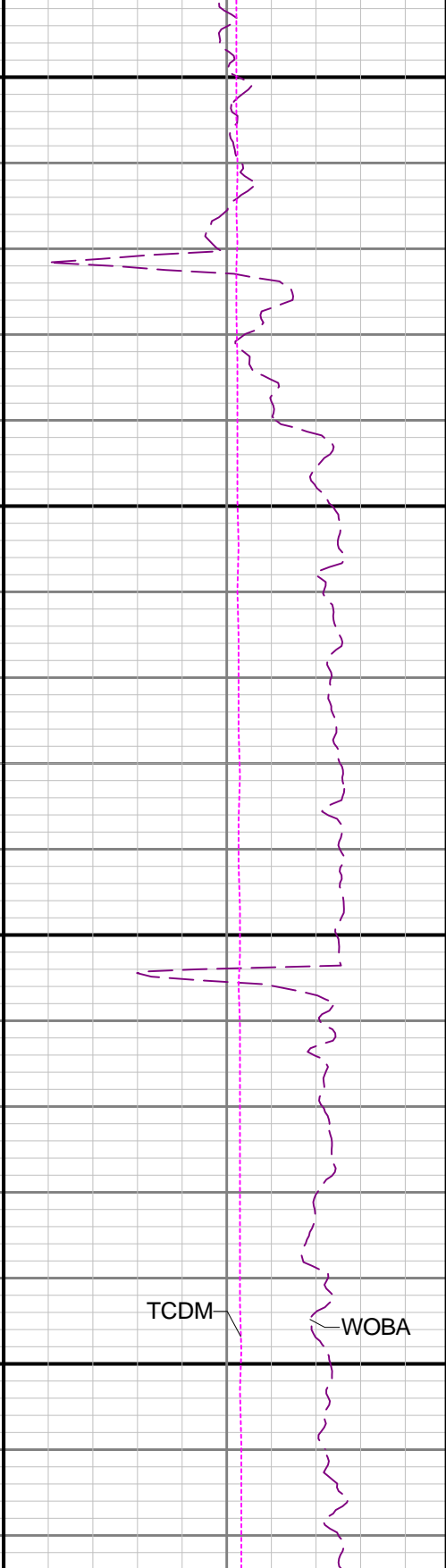
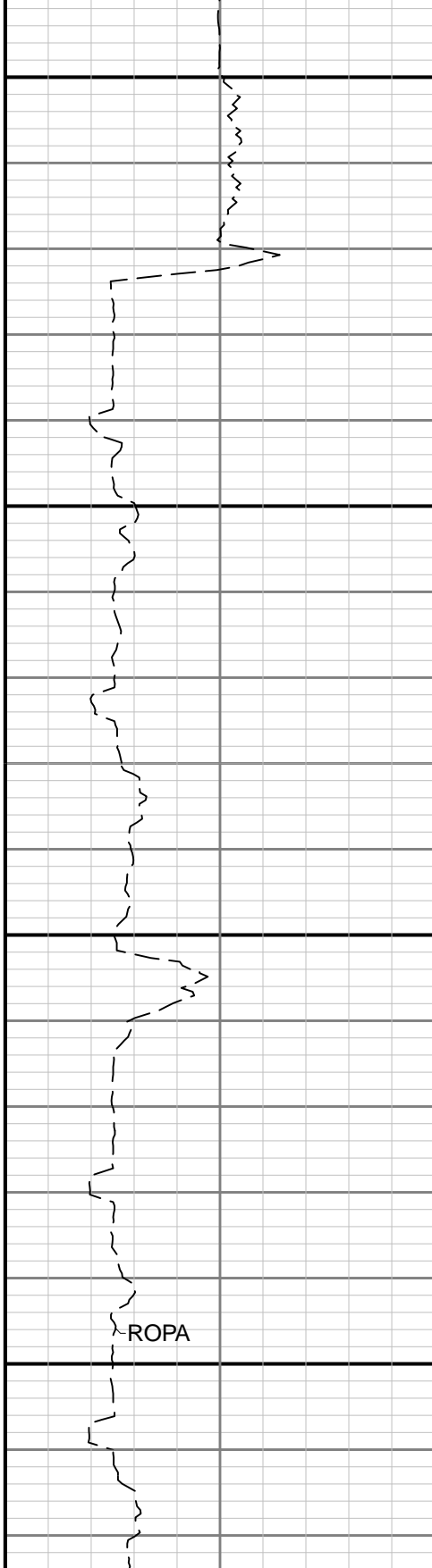
4800

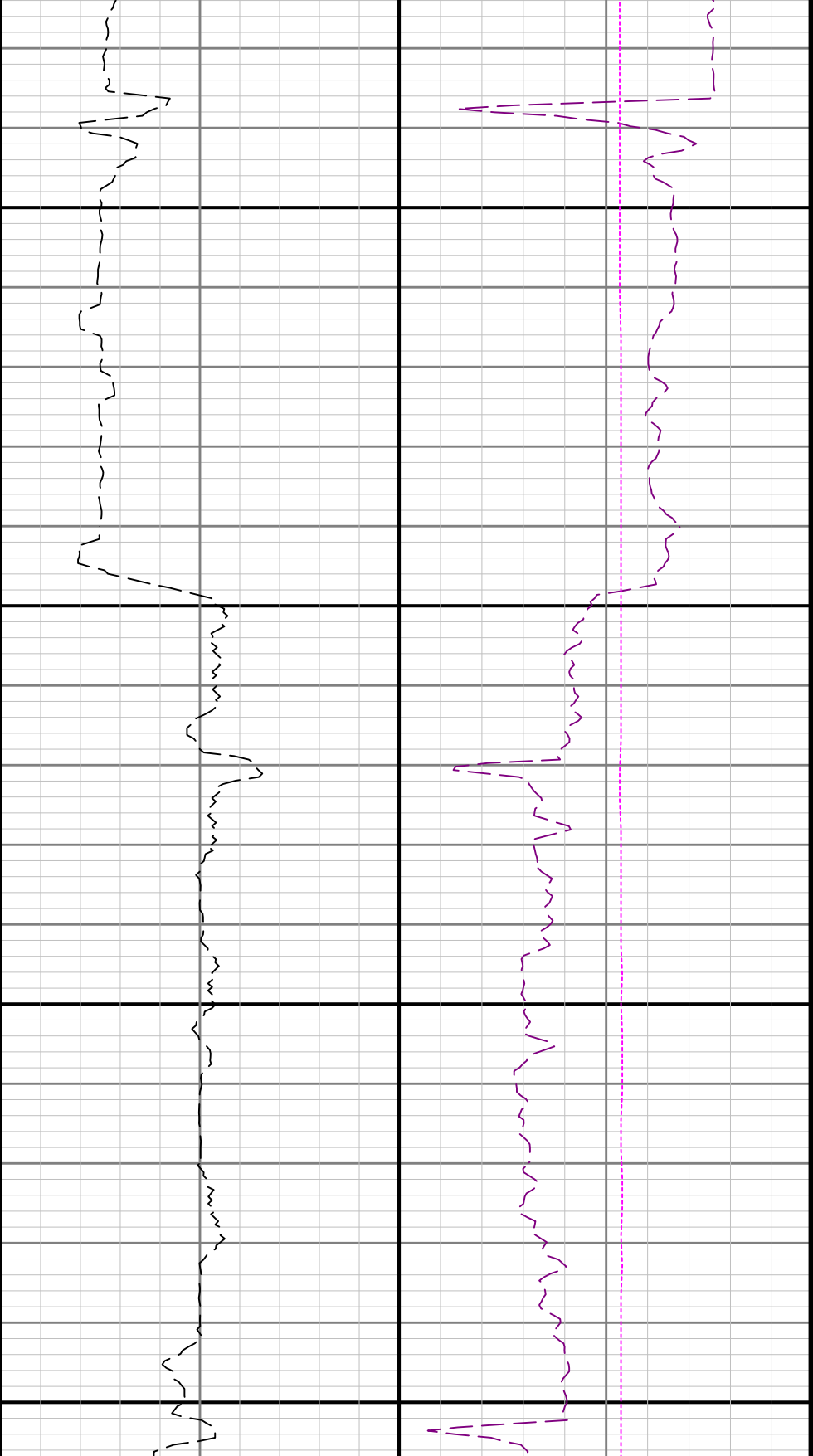




4900

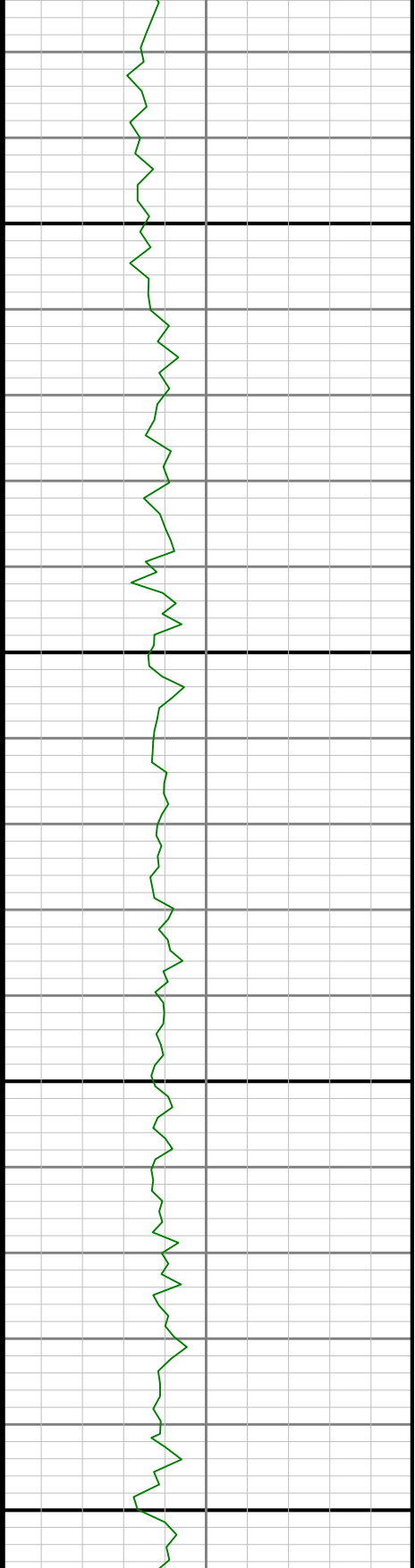
5000

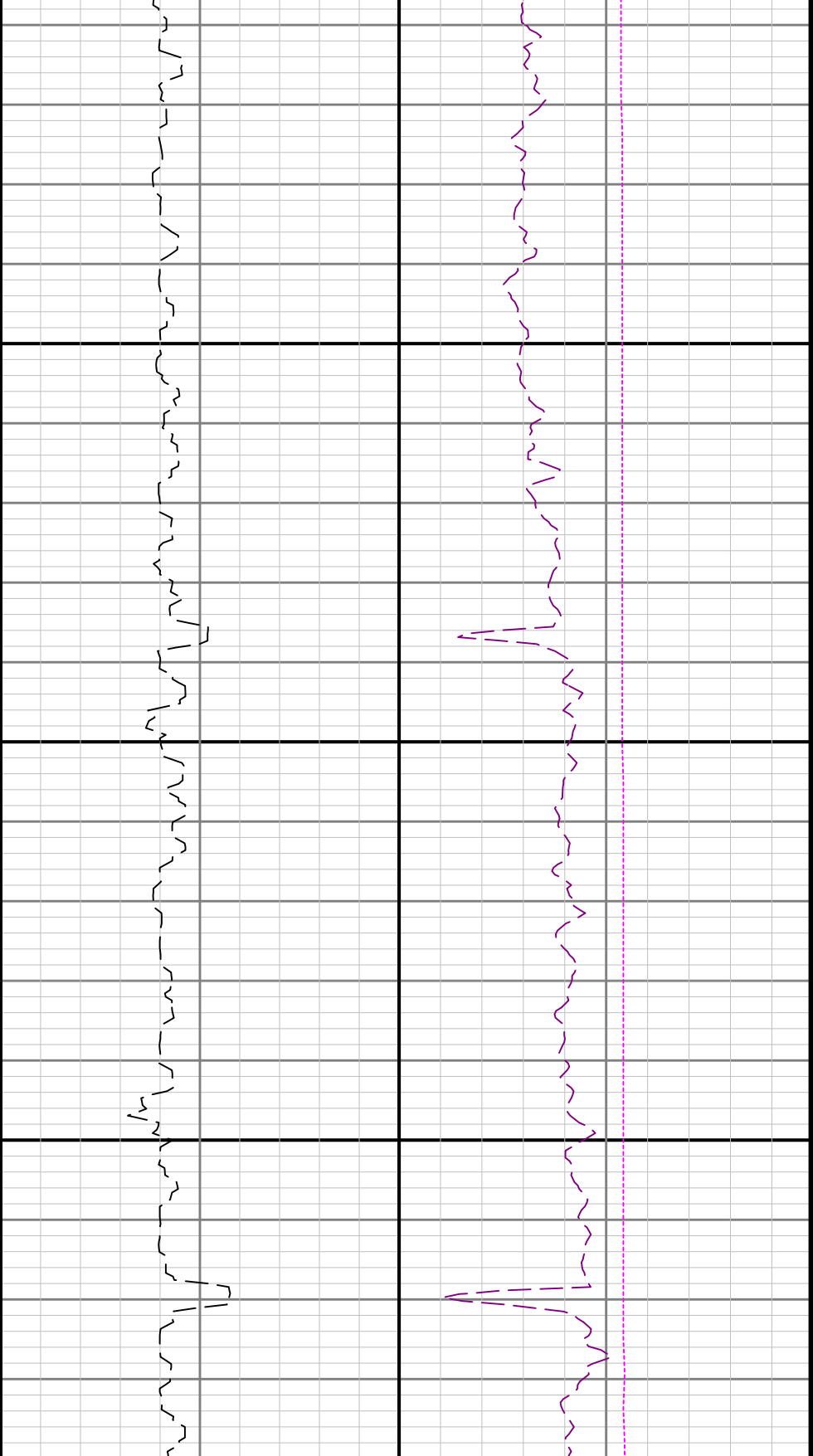




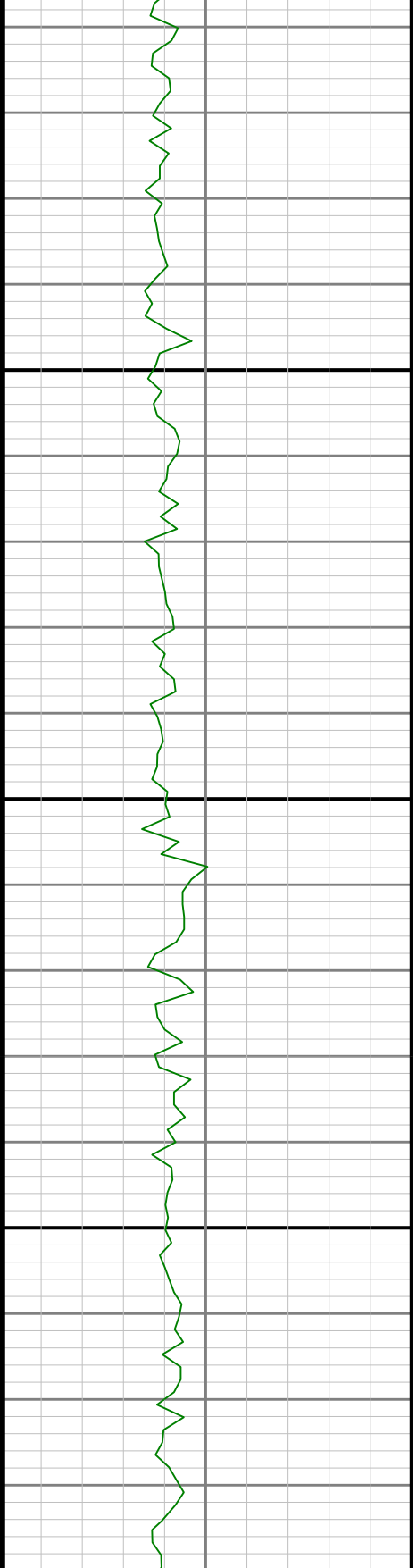
5100

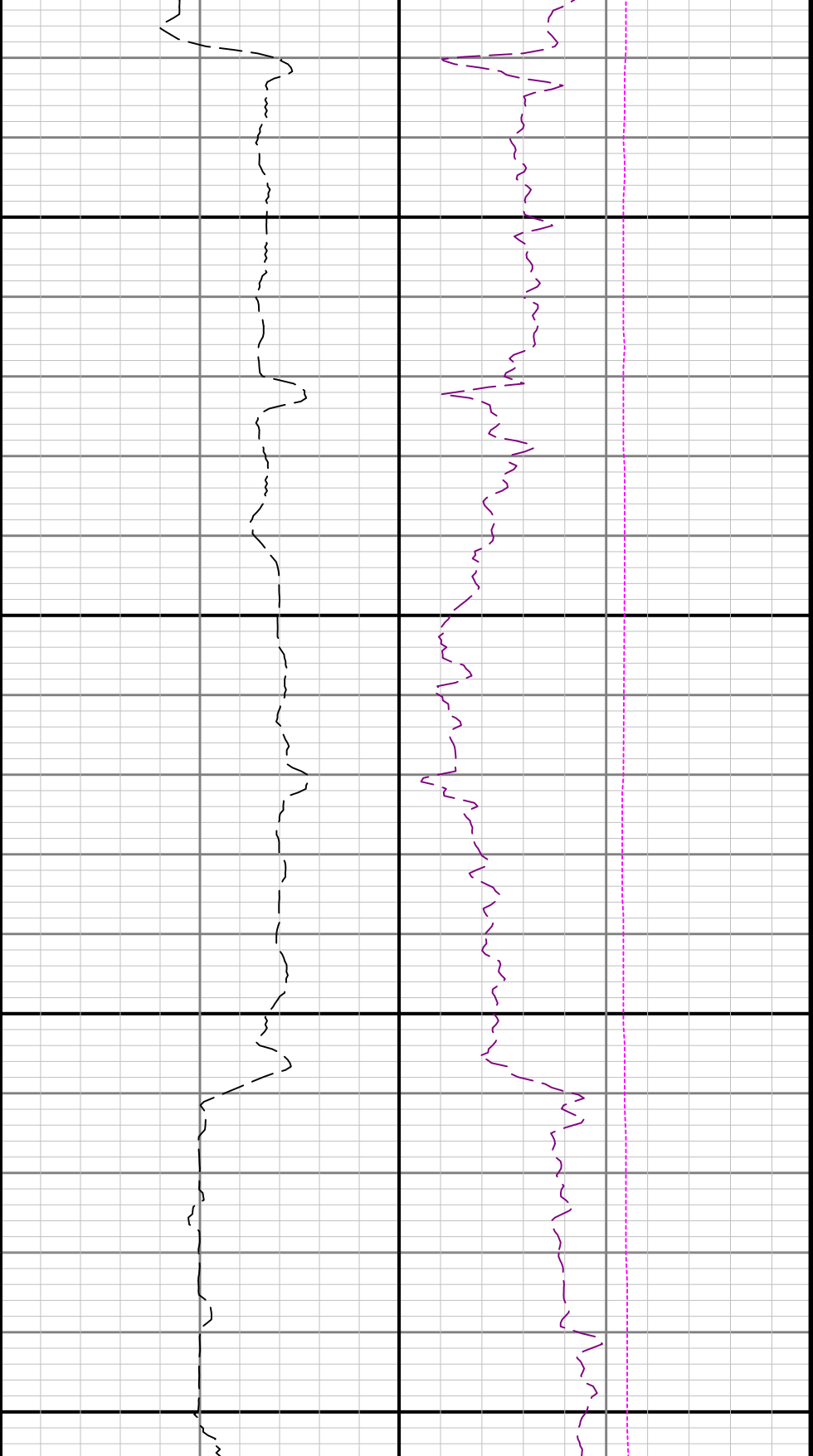
5200





5300

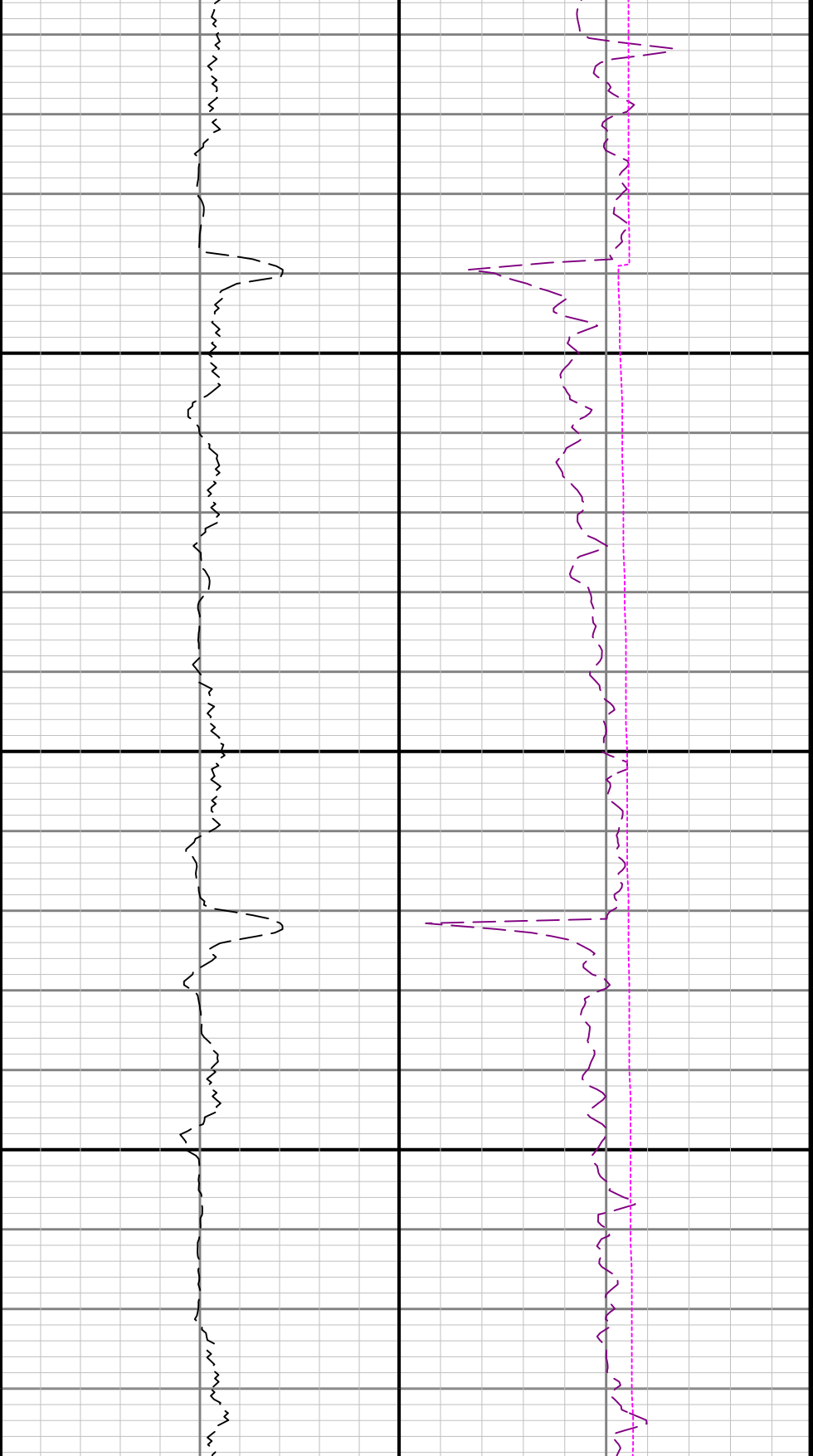




5600

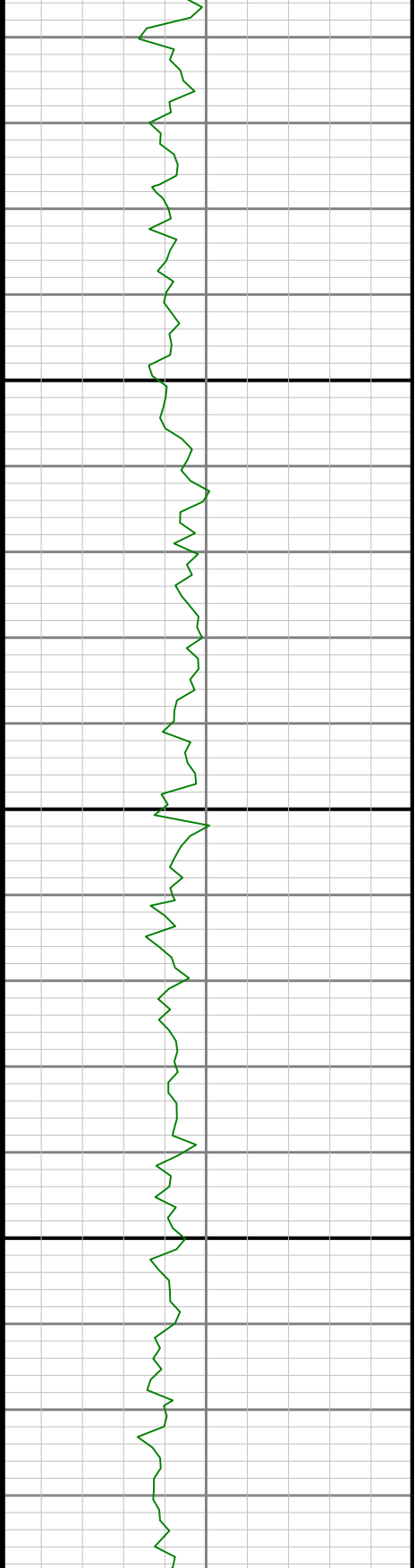
5700

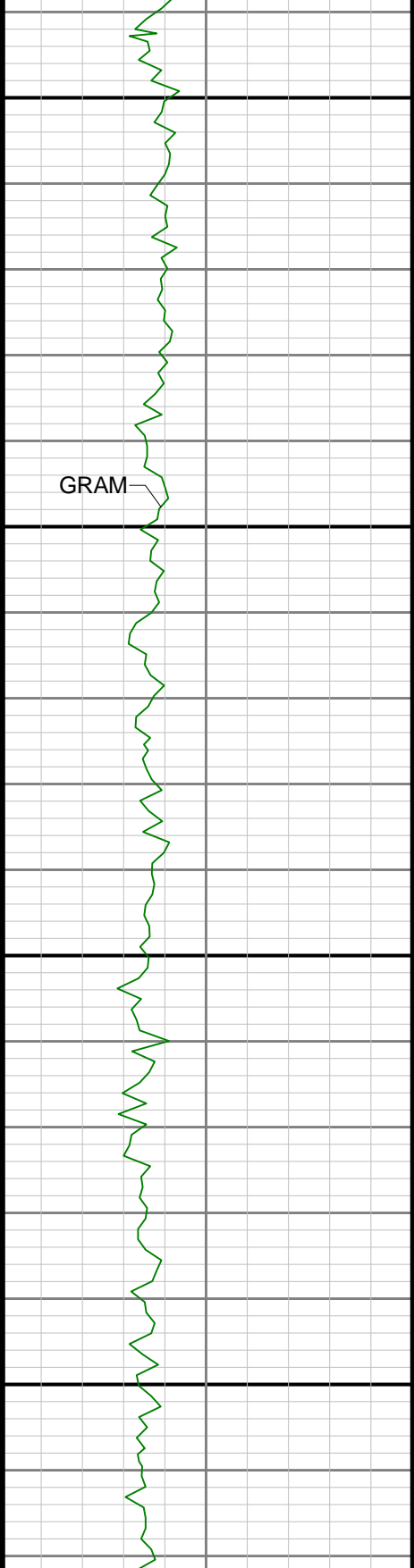
See Remark 1



5800

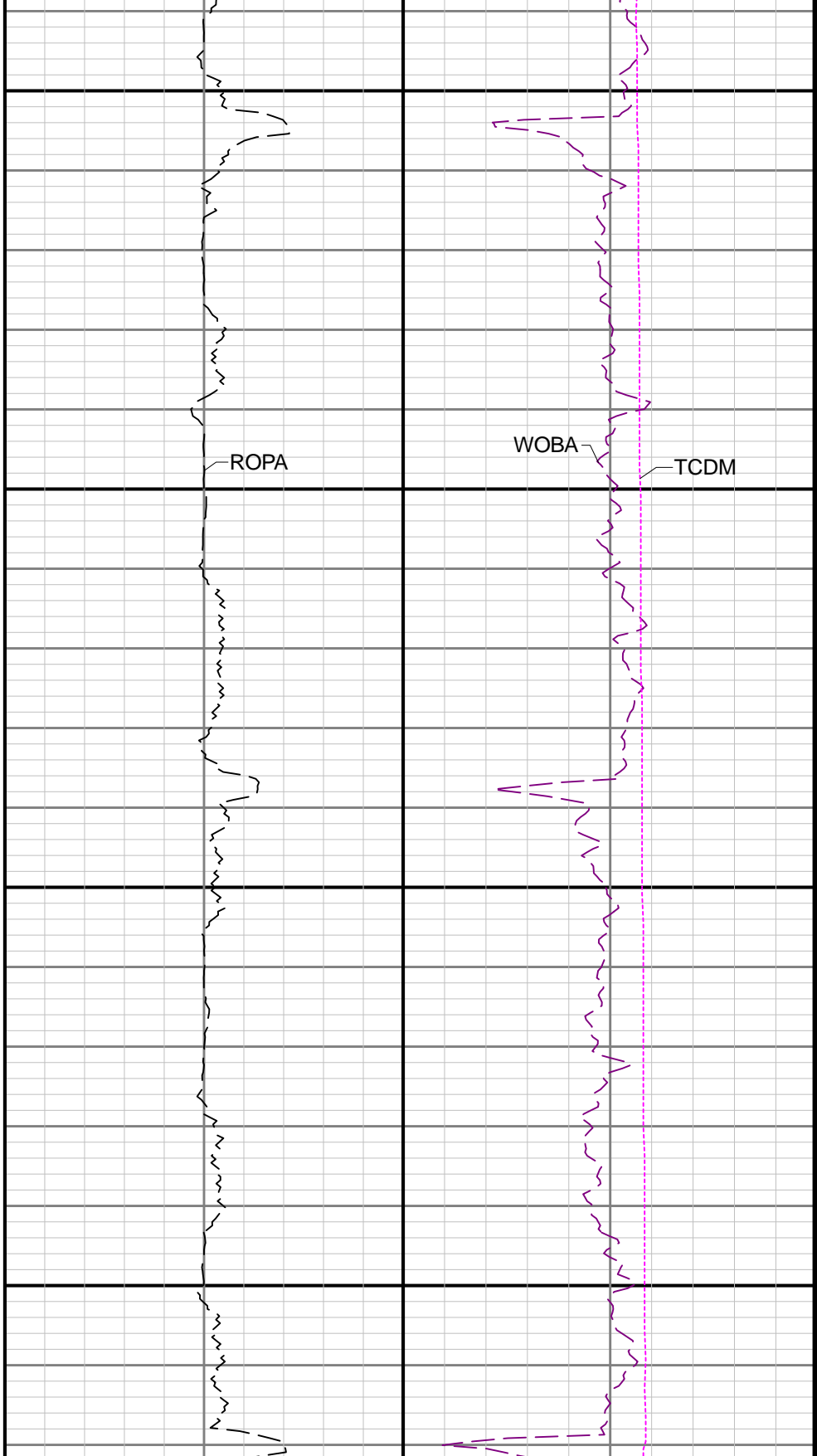
5900

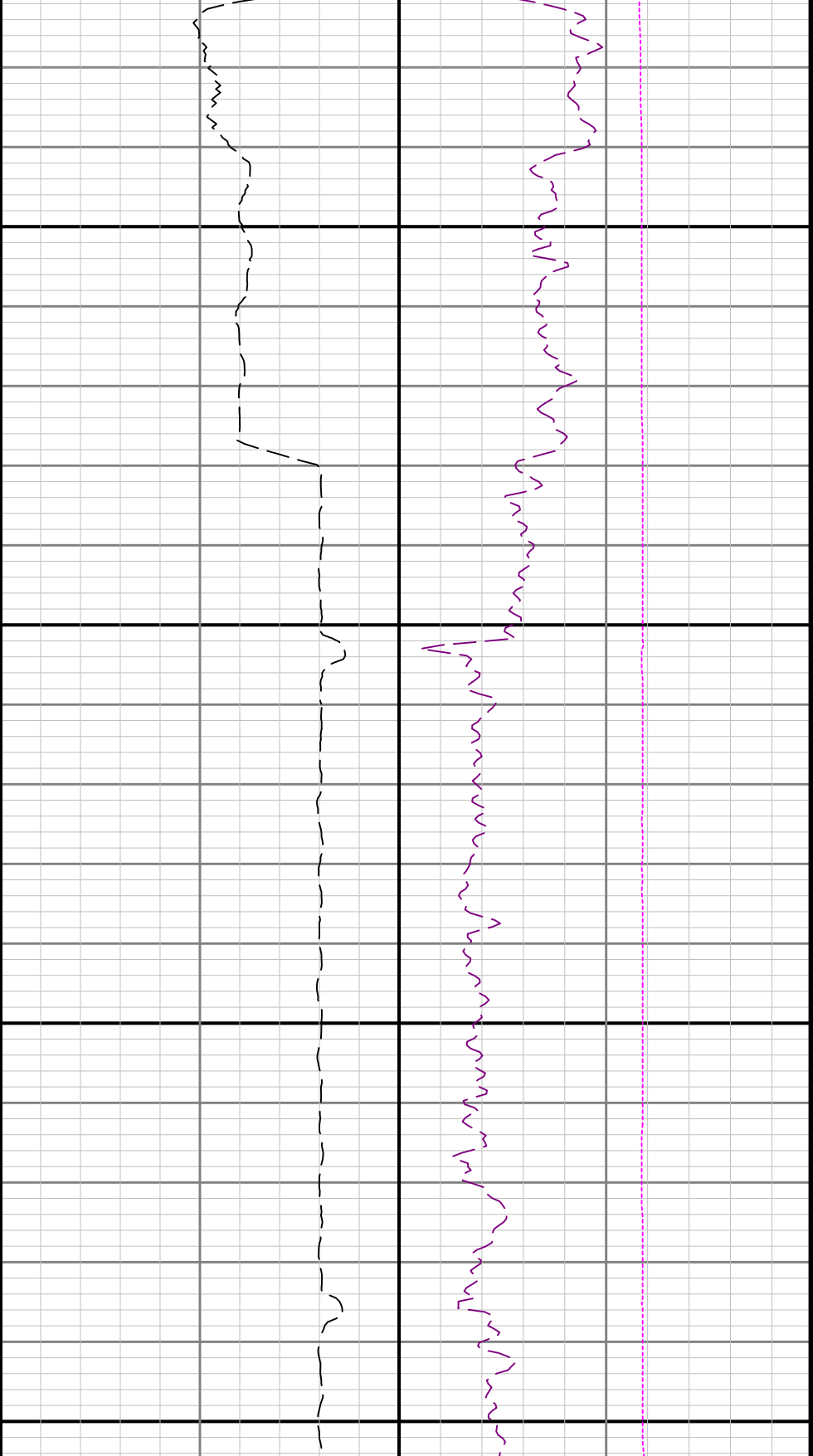




6000

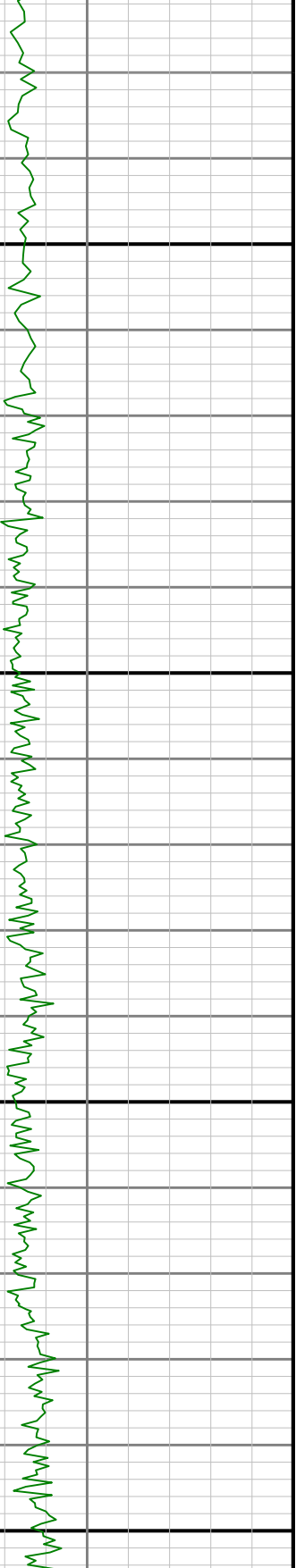
6100

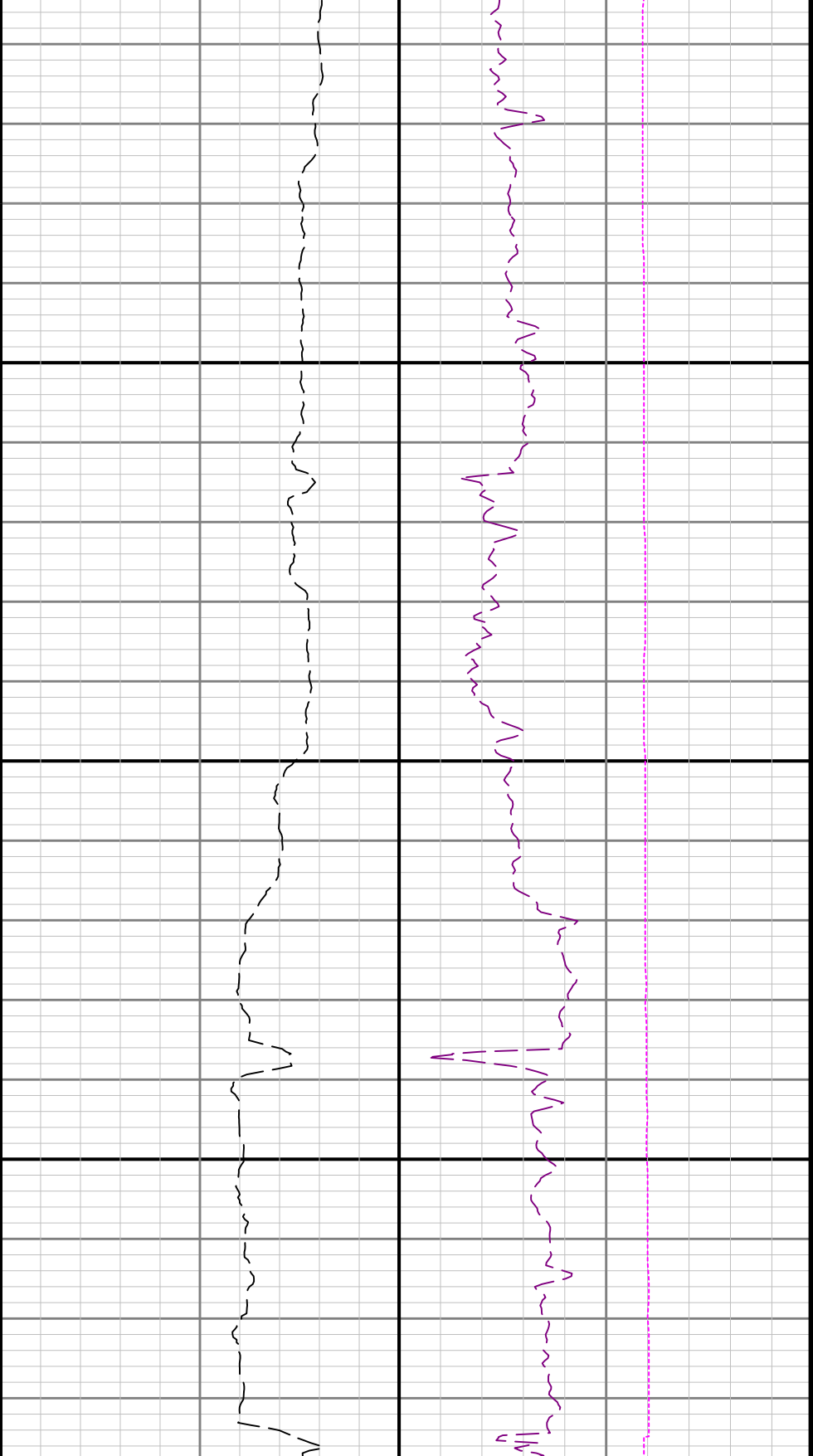




6200

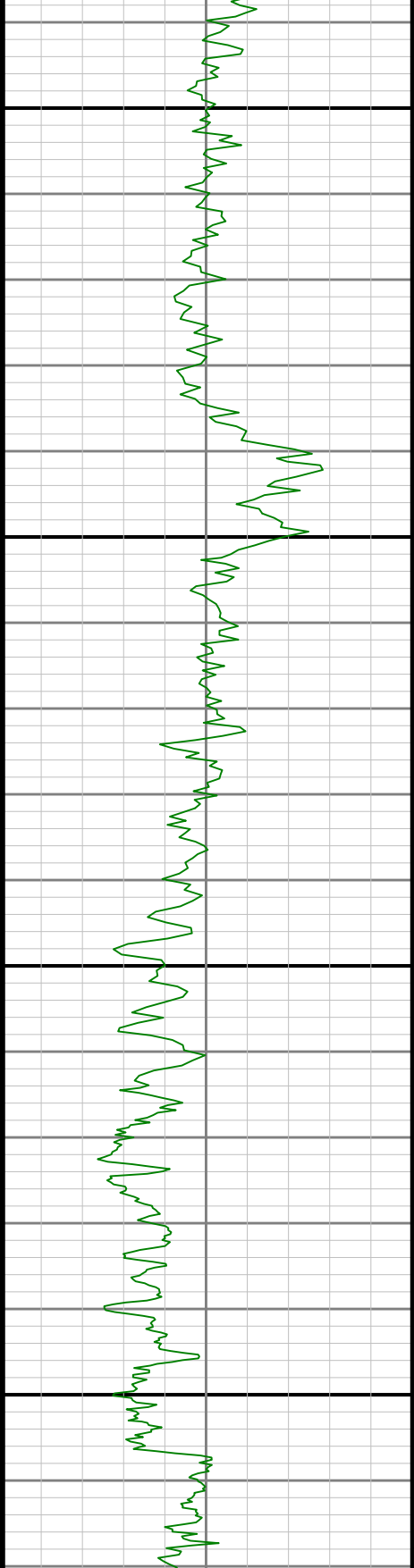
6300





6400

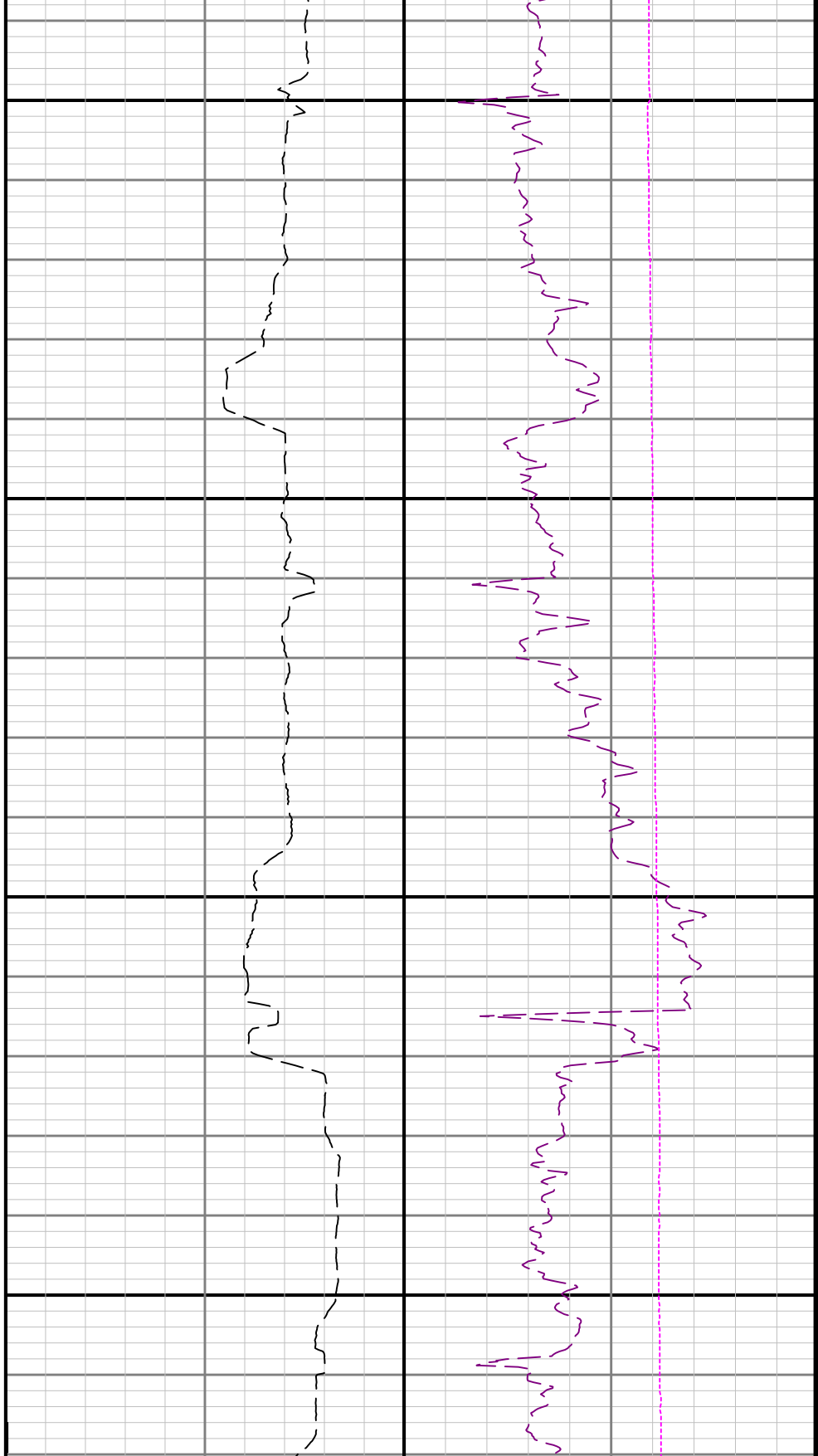


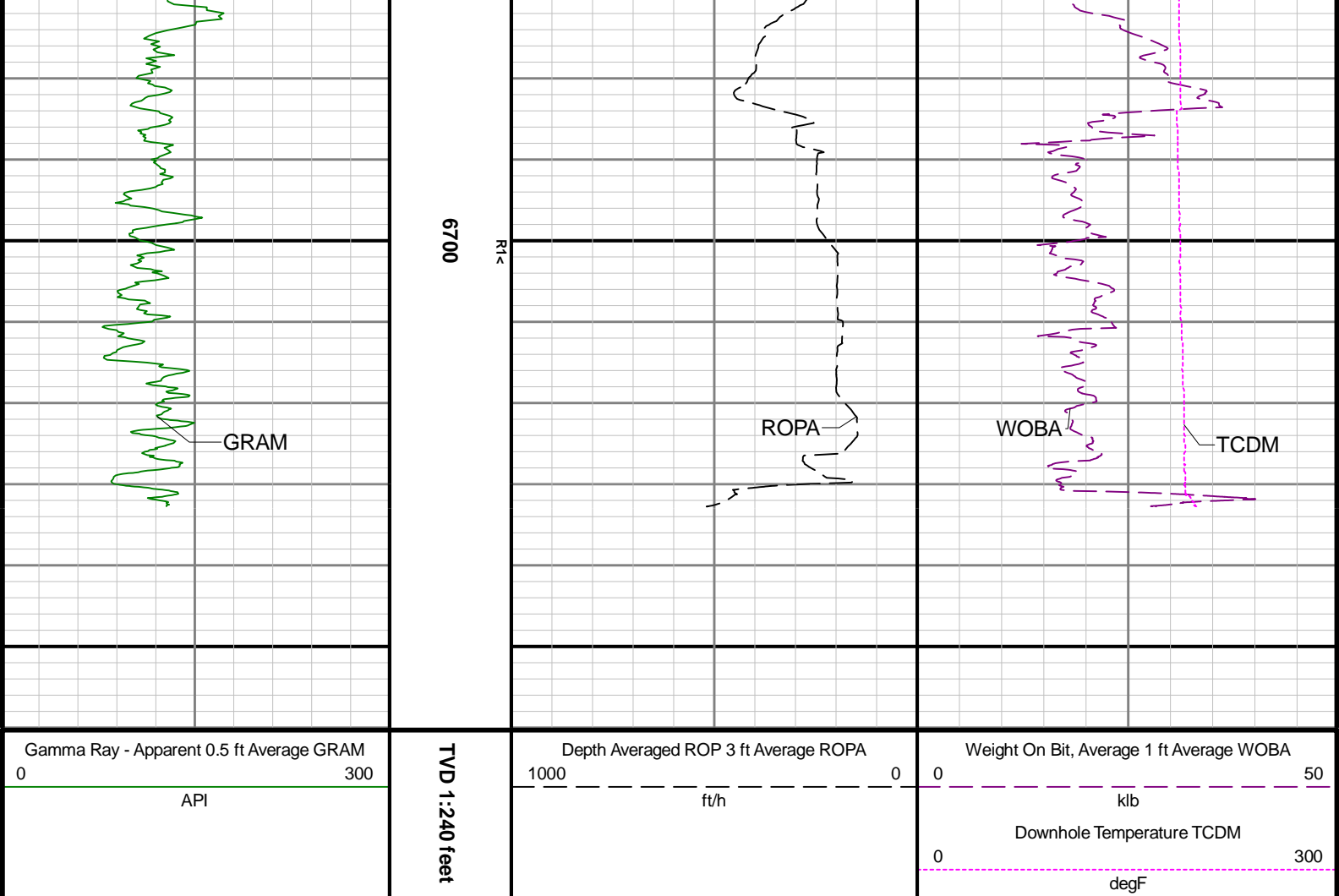


TD

6600

6500





Directional Survey Summary													
Latitude:		40° 11' 26.875" N				Longitude:		104° 28' 53.034" W					
North Reference:		Grid				Drill Depth Zero:		Rig Floor					
Vertical Datum is:		Mean Sea Level				Vertical Datum to DDZ: (ft)		4821.00					
Vertical Section North: (ft)		0.00				Vertical Section East: (ft)		0.00					
Vertical Section Azimuth: (deg)		190.68											
Grid Convergence: (deg)		-0.66				Magnetic Declination: (deg)		7.92					
Total Correction: (deg)		7.26				TVD Calculation Method:		Minimum Curvature					
Magnetic Correction:		Off				Local Magnetic Field: (nT)		52003					
Local Magnetic Dip Angle: (deg)		66.57				Local Gravity Field: (m/s2)		9.800					
Tie-In / Projection	Measured Depth (ft)	Inclination (deg)	Azimuth (deg)	Temperature (degF)	North (ft)	East (ft)	True Vertical Depth (ft)	TVD Subsea (ft)	Vertical Section (ft)	Course Length (ft)	Dog Leg Severity (deg/100ft)	Build Rate (deg/100ft)	Turn Rate (deg/100ft)
Tie-In	0.00	0.00	0.00	N/A	0.00	0.00	0.00	-4821.00	0.00	0.00	0.00	0.00	0.00
	80.00	0.45	15.64	N/A	0.30	0.08	80.00	-4741.00	-0.31	80.00	0.56	0.56	19.55
	173.00	0.32	18.92	N/A	0.90	0.27	173.00	-4648.00	-0.93	93.00	0.14	-0.14	3.53
	265.00	0.37	331.24	N/A	1.40	0.21	265.00	-4556.00	-1.42	92.00	0.31	0.05	-51.83
	360.00	0.07	97.73	N/A	1.66	0.12	359.99	-4461.01	-1.66	95.00	0.44	-0.32	133.15
	455.00	0.41	92.60	N/A	1.64	0.51	454.99	-4366.01	-1.71	95.00	0.36	0.36	-5.40
	550.00	0.65	167.28	N/A	1.10	0.97	549.99	-4271.01	-1.26	95.00	0.71	0.25	78.61
	645.00	0.46	164.28	N/A	0.21	1.19	644.99	-4176.01	-0.43	95.00	0.20	-0.20	-3.16
	739.00	0.26	300.81	N/A	-0.05	1.11	738.99	-4082.01	-0.16	94.00	0.72	-0.21	145.24

		834.00	0.38	229.31	N/A	-0.14	0.69	833.98	-3997.02	0.01	95.00	0.41	0.13	-75.26
		929.00	0.28	328.97	N/A	-0.15	0.33	928.98	-3892.02	0.08	95.00	0.54	-0.11	104.91
		1023.00	0.30	357.05	N/A	0.29	0.20	1022.98	-3798.02	-0.33	94.00	0.15	0.02	29.87
		1118.00	0.22	300.59	N/A	0.64	0.03	1117.98	-3703.02	-0.63	95.00	0.27	-0.08	-59.43
		1213.00	0.18	162.06	N/A	0.59	-0.08	1212.98	-3608.02	-0.56	95.00	0.39	-0.04	-145.82
		1307.00	0.25	302.94	N/A	0.56	-0.21	1306.98	-3514.02	-0.51	94.00	0.43	0.07	149.87
		1402.00	0.11	6.90	N/A	0.76	-0.37	1401.98	-3419.02	-0.68	95.00	0.24	-0.15	67.33
		1497.00	0.15	25.54	N/A	0.96	-0.31	1496.98	-3324.02	-0.89	95.00	0.06	0.04	19.62
		1591.00	0.02	105.61	N/A	1.07	-0.24	1590.98	-3230.02	-1.01	94.00	0.16	-0.14	85.18
		1686.00	0.25	342.23	N/A	1.26	-0.28	1685.98	-3135.02	-1.19	95.00	0.28	0.24	-129.87
		1781.00	0.26	352.39	N/A	1.67	-0.38	1780.98	-3040.02	-1.58	95.00	0.05	0.01	10.69
		1876.00	0.24	31.71	N/A	2.06	-0.30	1875.98	-2945.02	-1.97	95.00	0.18	-0.02	41.39
		1918.00	0.25	20.12	N/A	2.22	-0.22	1917.98	-2903.02	-2.14	42.00	0.12	0.02	-27.60
		2085.00	2.80	262.30	117.6	2.01	-4.14	2084.91	-2736.09	-1.21	167.00	1.75	1.53	-70.55
		2179.00	4.43	263.17	117.6	1.27	-10.02	2178.72	-2642.28	0.60	94.00	1.73	1.73	0.93
		2274.00	5.75	261.79	123.0	0.16	-18.37	2273.35	-2547.65	3.25	95.00	1.40	1.39	-1.45
		2368.00	6.74	262.58	123.0	-1.23	-28.50	2366.79	-2454.21	6.49	94.00	1.06	1.05	0.84
		2463.00	7.63	262.57	123.0	-2.76	-40.29	2461.04	-2359.96	10.18	95.00	0.94	0.94	-0.01
		2558.00	9.29	264.55	125.7	-4.31	-54.17	2555.00	-2266.00	14.27	95.00	1.77	1.75	2.08
		2652.00	10.95	263.48	125.7	-6.04	-70.60	2647.54	-2173.46	19.02	94.00	1.78	1.77	-1.14
		2747.00	13.47	263.60	128.4	-8.30	-90.56	2740.38	-2080.62	24.94	95.00	2.65	2.65	0.13
		2842.00	16.66	263.74	128.4	-11.02	-115.10	2832.10	-1988.90	32.16	95.00	3.36	3.36	0.15
		2936.00	19.54	264.08	131.1	-14.11	-144.14	2921.44	-1899.56	40.58	94.00	3.07	3.06	0.36
		3031.00	21.14	263.57	131.1	-17.67	-176.96	3010.52	-1810.48	50.16	95.00	1.69	1.68	-0.54
		3126.00	22.04	263.57	133.8	-21.58	-211.70	3098.85	-1722.15	60.44	95.00	0.95	0.95	0.00
		3221.00	23.05	263.29	133.8	-25.75	-247.88	3186.59	-1634.41	71.24	95.00	1.07	1.06	-0.29
		3315.00	25.30	263.41	136.5	-30.21	-286.12	3272.34	-1548.66	82.71	94.00	2.39	2.39	0.13
		3410.00	25.37	263.08	136.5	-34.99	-326.49	3358.20	-1462.80	94.89	95.00	0.17	0.07	-0.35
		3505.00	28.40	264.00	136.5	-39.80	-369.17	3442.93	-1378.07	107.53	95.00	3.22	3.19	0.97
		3599.00	28.37	264.46	136.5	-44.30	-413.63	3525.63	-1295.37	120.18	94.00	0.23	-0.03	0.49
		3694.00	28.33	264.23	141.9	-48.74	-458.52	3609.23	-1211.77	132.87	95.00	0.12	-0.04	-0.24
		3789.00	28.93	264.05	141.9	-53.39	-503.80	3692.62	-1128.38	145.83	95.00	0.64	0.63	-0.19
		3884.00	29.39	264.14	144.6	-58.15	-549.85	3775.58	-1045.42	159.04	95.00	0.49	0.48	0.09
		3978.00	29.33	264.06	144.6	-62.89	-595.69	3857.50	-963.50	172.19	94.00	0.08	-0.06	-0.09
		4073.00	29.28	264.37	144.6	-67.58	-641.95	3940.34	-880.66	185.37	95.00	0.17	-0.05	0.33
		4168.00	29.11	263.96	147.3	-72.29	-688.05	4023.28	-797.72	198.55	95.00	0.28	-0.18	-0.43
		4263.00	29.56	264.00	147.3	-77.17	-734.34	4106.09	-714.91	211.92	95.00	0.47	0.47	0.04
		4357.00	29.19	264.66	147.3	-81.72	-780.22	4188.01	-632.99	224.90	94.00	0.52	-0.39	0.70
		4452.00	28.60	265.14	150.0	-85.81	-825.94	4271.18	-549.82	237.39	95.00	0.67	-0.62	0.51
		4546.00	28.69	265.20	150.0	-89.60	-870.84	4353.68	-467.32	249.44	94.00	0.10	0.10	0.06
		4641.00	28.95	264.92	152.7	-93.54	-916.47	4436.91	-384.09	261.77	95.00	0.31	0.27	-0.29
		4736.00	28.86	265.15	152.7	-97.52	-962.21	4520.07	-300.93	274.15	95.00	0.15	-0.09	0.24
		4830.00	28.65	265.45	155.4	-101.22	-1007.28	4602.48	-218.52	286.14	94.00	0.27	-0.22	0.32
		4925.00	28.84	264.48	155.4	-105.23	-1052.79	4685.78	-135.22	298.52	95.00	0.53	0.20	-1.02
		5020.00	28.76	264.85	155.4	-109.49	-1098.36	4769.03	-51.97	311.15	95.00	0.21	-0.08	0.39
		5114.00	28.74	265.92	155.4	-113.13	-1143.42	4851.44	30.44	323.07	94.00	0.55	-0.02	1.14
		5209.00	28.79	264.41	158.1	-116.98	-1188.97	4934.72	113.72	335.30	95.00	0.77	0.05	-1.59
		5304.00	28.96	264.98	158.1	-121.22	-1234.65	5017.91	196.91	347.93	95.00	0.34	0.18	0.60
		5398.00	28.36	265.12	160.8	-125.11	-1279.57	5100.39	279.39	360.08	94.00	0.64	-0.64	0.15
		5493.00	28.74	265.24	160.8	-128.93	-1324.81	5183.84	362.84	372.21	95.00	0.40	0.40	0.13
		5588.00	28.76	265.02	160.8	-132.81	-1370.34	5267.13	446.13	384.46	95.00	0.11	0.02	-0.23
		5683.00	28.68	265.10	163.5	-136.74	-1415.82	5350.44	529.44	396.75	95.00	0.09	-0.08	0.08
		5777.00	27.98	265.81	160.8	-140.28	-1460.28	5433.18	612.18	408.47	94.00	0.83	-0.74	0.76
		5872.00	28.58	263.42	160.8	-144.51	-1505.09	5516.84	695.84	420.93	95.00	1.35	0.63	-2.52
		5967.00	25.32	265.64	163.5	-148.66	-1547.93	5601.52	780.52	432.95	95.00	3.59	-3.43	2.34
		6061.00	28.11	265.62	163.5	-151.88	-1590.06	5685.47	864.47	443.92	94.00	2.97	2.97	-0.02
		6156.00	28.14	265.68	160.8	-155.27	-1634.71	5769.26	948.26	455.54	95.00	0.04	0.03	0.06
		6251.00	29.08	265.07	166.2	-158.95	-1680.05	5852.66	1031.66	467.55	95.00	1.04	0.99	-0.64
		6345.00	29.02	265.60	171.6	-162.66	-1725.55	5934.83	1113.83	479.62	94.00	0.28	-0.06	0.56
		6440.00	28.81	265.40	174.3	-166.26	-1771.34	6017.99	1196.99	491.65	95.00	0.24	-0.22	-0.21
		6534.00	28.84	265.53	174.3	-169.85	-1816.52	6100.34	1279.34	503.55	94.00	0.07	0.03	0.14

	6629.00	29.33	264.20	174.3	-173.98	-1862.51	6183.36	1362.36	516.14	95.00	0.85	0.52	-1.40
	6724.00	29.33	250.21	177.0	-184.22	-1907.60	6266.28	1445.28	534.56	95.00	7.20	-0.00	-14.73
	6819.00	34.47	233.42	177.0	-208.19	-1951.20	6347.07	1526.07	566.18	95.00	10.75	5.41	-17.67
	6913.00	42.29	220.18	179.7	-248.33	-1993.10	6420.82	1599.82	613.40	94.00	12.03	8.32	-14.09
	7008.00	50.61	213.51	177.0	-303.49	-2034.09	6486.26	1665.26	675.20	95.00	10.12	8.76	-7.02
	7103.00	50.16	203.49	177.0	-367.64	-2068.94	6546.92	1725.92	744.70	95.00	8.13	-0.47	-10.55
	7198.00	56.73	201.07	182.5	-438.24	-2097.79	6603.48	1782.48	819.42	95.00	7.21	6.92	-2.55
	7292.00	64.68	198.25	185.2	-515.39	-2125.27	6649.45	1828.45	900.33	94.00	8.85	8.46	-3.00
	7387.00	75.02	194.06	185.2	-600.94	-2149.94	6682.14	1861.14	988.97	95.00	11.64	10.88	-4.41
	7482.00	75.56	184.74	185.2	-691.49	-2164.92	6706.31	1885.31	1080.72	95.00	9.51	0.57	-9.81
	7576.00	81.69	181.81	190.6	-783.44	-2170.16	6724.85	1903.85	1172.05	94.00	7.20	6.52	-3.12
	7671.00	90.49	180.18	190.6	-878.10	-2171.80	6731.32	1910.32	1265.38	95.00	9.42	9.26	-1.72
	7766.00	88.89	179.06	190.6	-973.10	-2171.17	6731.83	1910.83	1358.61	95.00	2.06	-1.68	-1.18
	7861.00	89.97	178.02	196.0	-1068.06	-2168.75	6732.78	1911.78	1451.48	95.00	1.58	1.14	-1.09
	7955.00	90.37	178.55	201.4	-1162.01	-2165.93	6732.50	1911.50	1543.28	94.00	0.71	0.43	0.56
	8050.00	90.65	178.95	201.4	-1256.99	-2163.86	6731.65	1910.65	1636.23	95.00	0.51	0.29	0.42
	8145.00	90.43	178.80	206.8	-1351.96	-2162.00	6730.76	1909.76	1729.21	95.00	0.28	-0.23	-0.16
	8240.00	90.25	178.87	206.8	-1446.94	-2160.06	6730.19	1909.19	1822.19	95.00	0.20	-0.19	0.07
	8334.00	90.46	178.41	209.5	-1540.91	-2157.83	6729.61	1908.61	1914.12	94.00	0.54	0.22	-0.49
	8429.00	90.58	179.05	209.5	-1635.89	-2155.73	6728.75	1907.75	2007.06	95.00	0.69	0.13	0.67
	8524.00	90.55	178.52	212.2	-1730.86	-2153.71	6727.81	1906.81	2100.01	95.00	0.56	-0.03	-0.56
	8618.00	90.62	178.19	214.9	-1824.82	-2151.02	6726.85	1905.85	2191.84	94.00	0.36	0.07	-0.35
	8713.00	90.65	176.85	214.9	-1919.72	-2146.91	6725.80	1904.80	2284.34	95.00	1.41	0.03	-1.41
	8808.00	89.14	179.69	214.9	-2014.66	-2144.04	6725.97	1904.97	2377.11	95.00	3.39	-1.59	2.99
	8903.00	91.32	177.39	217.6	-2109.62	-2141.62	6725.59	1904.59	2469.97	95.00	3.34	2.29	-2.42
	8997.00	90.71	180.58	217.6	-2203.58	-2139.95	6723.93	1902.93	2561.99	94.00	3.45	-0.65	3.39
	9092.00	89.29	179.62	217.6	-2298.57	-2140.12	6723.93	1902.93	2655.37	95.00	1.80	-1.49	-1.01
	9187.00	89.94	179.18	217.6	-2393.57	-2139.12	6724.57	1903.57	2748.53	95.00	0.83	0.68	-0.46
	9281.00	90.25	180.04	220.3	-2487.56	-2138.48	6724.41	1903.41	2840.78	94.00	0.97	0.33	0.91
	9376.00	89.23	180.05	220.3	-2582.56	-2138.56	6724.84	1903.84	2934.15	95.00	1.07	-1.07	0.01
	9471.00	89.38	179.23	223.0	-2677.55	-2137.96	6725.99	1904.99	3027.38	95.00	0.88	0.16	-0.86
	9565.00	89.51	178.32	223.0	-2771.52	-2135.95	6726.90	1905.90	3119.36	94.00	0.98	0.14	-0.97
	9660.00	90.28	179.93	223.0	-2866.51	-2134.50	6727.08	1906.08	3212.43	95.00	1.88	0.81	1.69
	9754.00	90.40	179.81	225.7	-2960.51	-2134.29	6726.52	1905.52	3304.76	94.00	0.18	0.13	-0.13
	9849.00	90.49	179.01	225.7	-3055.50	-2133.31	6725.78	1904.78	3397.92	95.00	0.85	0.09	-0.84
	9944.00	90.25	179.88	225.7	-3150.49	-2132.39	6725.17	1904.17	3491.10	95.00	0.95	-0.25	0.92
	10038.00	90.55	180.67	228.4	-3244.49	-2132.84	6724.51	1903.51	3583.55	94.00	0.90	0.32	0.84
	10133.00	90.43	179.87	228.4	-3339.48	-2133.29	6723.70	1902.70	3676.98	95.00	0.85	-0.13	-0.84
	10228.00	90.43	179.46	231.1	-3434.48	-2132.73	6722.99	1901.99	3770.23	95.00	0.43	-0.00	-0.43
	10322.00	92.37	182.01	282.5	-3528.43	-2133.94	6720.69	1899.69	3862.78	94.00	3.41	2.06	2.71
	10417.00	89.75	178.97	228.4	-3623.39	-2134.75	6718.93	1897.93	3956.24	95.00	4.22	-2.76	-3.20
	10511.00	90.25	179.99	231.1	-3717.38	-2133.90	6718.93	1897.93	4048.45	94.00	1.21	0.53	1.09
	10606.00	90.46	180.19	231.1	-3812.38	-2134.05	6718.34	1897.34	4141.83	95.00	0.31	0.22	0.21
	10701.00	90.22	180.46	233.8	-3907.38	-2134.58	6717.78	1896.78	4235.28	95.00	0.38	-0.25	0.28
	10796.00	90.49	180.61	233.8	-4002.37	-2135.47	6717.19	1896.19	4328.80	95.00	0.33	0.28	0.16
	10890.00	90.68	180.31	233.8	-4096.37	-2136.23	6716.23	1895.23	4421.30	94.00	0.38	0.20	-0.32
	10985.00	90.37	179.72	233.8	-4191.36	-2136.25	6715.36	1894.36	4514.65	95.00	0.70	-0.33	-0.62
	11080.00	90.22	180.16	233.8	-4286.36	-2136.15	6714.87	1893.87	4607.99	95.00	0.49	-0.16	0.46
	11174.00	90.31	180.53	236.5	-4380.36	-2136.72	6714.44	1893.44	4700.46	94.00	0.41	0.10	0.39
	11269.00	90.43	180.41	236.5	-4475.35	-2137.50	6713.82	1892.82	4793.96	95.00	0.18	0.13	-0.13
	11364.00	90.65	180.27	236.5	-4570.35	-2138.06	6712.93	1891.93	4887.41	95.00	0.27	0.23	-0.15
	11458.00	90.77	180.55	236.5	-4664.34	-2138.73	6711.76	1890.76	4979.90	94.00	0.32	0.13	0.30
	11553.00	90.34	179.81	236.5	-4759.33	-2139.03	6710.84	1889.84	5073.30	95.00	0.90	-0.45	-0.78
	11648.00	89.97	179.87	236.5	-4854.33	-2138.77	6710.59	1889.59	5166.60	95.00	0.39	-0.39	0.06
	11742.00	90.22	179.80	236.5	-4948.33	-2138.50	6710.43	1889.43	5258.92	94.00	0.28	0.27	-0.07
	11837.00	90.00	179.67	236.5	-5043.33	-2138.06	6710.25	1889.25	5352.20	95.00	0.27	-0.23	-0.14
	12026.00	90.77	180.27	236.5	-5232.32	-2137.96	6708.98	1887.98	5537.90	189.00	0.52	0.41	0.32
	12121.00	90.25	180.22	239.2	-5327.32	-2138.36	6708.13	1887.13	5631.32	95.00	0.55	-0.55	-0.05
	12215.00	90.80	179.67	239.2	-5421.31	-2138.27	6707.27	1886.27	5723.67	94.00	0.83	0.59	-0.59
	12310.00	91.17	180.65	236.5	-5516.29	-2138.54	6705.64	1884.64	5817.06	95.00	1.10	0.39	1.03
	12404.00	90.22	180.19	239.2	-5610.28	-2139.23	6704.50	1883.50	5909.55	94.00	1.12	-1.01	-0.49

	12499.00	90.43	177.72	236.5	-5705.26	-2137.49	6703.96	1882.96	6002.56	95.00	2.61	0.22	-2.60
	12594.00	90.77	178.50	239.2	-5800.20	-2134.36	6702.96	1881.96	6095.28	95.00	0.90	0.36	0.82
	12689.00	90.31	175.44	231.1	-5895.05	-2129.34	6702.07	1881.07	6187.55	95.00	3.26	-0.48	-3.22
	12783.00	90.62	175.69	233.8	-5988.77	-2122.07	6701.31	1880.31	6278.30	94.00	0.42	0.33	0.27
	12878.00	89.51	175.87	236.5	-6083.51	-2115.08	6701.20	1880.20	6370.10	95.00	1.18	-1.17	0.19
	12973.00	90.83	178.11	236.5	-6178.37	-2110.09	6700.92	1879.92	6462.40	95.00	2.74	1.39	2.36
	13067.00	90.18	180.23	236.5	-6272.35	-2108.73	6700.09	1879.09	6554.50	94.00	2.36	-0.69	2.26
	13162.00	90.80	179.15	239.2	-6367.34	-2108.22	6699.28	1878.28	6647.75	95.00	1.31	0.65	-1.14
	13257.00	89.48	178.50	241.9	-6462.32	-2106.27	6699.04	1878.04	6740.72	95.00	1.55	-1.39	-0.68
	13351.00	89.78	178.03	241.9	-6556.28	-2103.42	6699.65	1878.65	6832.52	94.00	0.59	0.32	-0.50
	13446.00	90.49	179.20	241.9	-6651.24	-2101.13	6699.43	1878.43	6925.42	95.00	1.44	0.75	1.23
	13540.00	89.60	178.55	244.6	-6745.23	-2099.28	6699.35	1878.35	7017.43	94.00	1.17	-0.95	-0.69
	13635.00	91.05	179.37	244.6	-6840.20	-2097.56	6698.81	1877.81	7110.44	95.00	1.75	1.53	0.86
	13730.00	90.49	178.42	244.6	-6935.18	-2095.73	6697.54	1876.54	7203.43	95.00	1.16	-0.59	-1.00
	13824.00	91.69	179.42	247.3	-7029.14	-2093.95	6695.75	1874.75	7295.44	94.00	1.66	1.28	1.06
	13919.00	91.39	179.94	247.3	-7124.10	-2093.42	6693.20	1872.20	7388.66	95.00	0.63	-0.32	0.55
	14014.00	91.35	179.54	250.0	-7219.08	-2092.99	6690.92	1869.92	7481.90	95.00	0.42	-0.04	-0.42
	14108.00	92.31	179.34	250.0	-7313.02	-2092.08	6687.92	1866.92	7574.05	94.00	1.04	1.02	-0.21
	14202.00	91.08	179.26	250.0	-7406.97	-2090.93	6685.14	1864.14	7666.16	94.00	1.31	-1.31	-0.09
	14297.00	91.08	179.71	250.0	-7501.95	-2090.07	6683.35	1862.35	7759.34	95.00	0.47	-0.00	0.47
	14391.00	90.89	180.03	250.0	-7595.94	-2089.86	6681.74	1860.74	7851.66	94.00	0.40	-0.20	0.34
	14486.00	90.31	179.55	250.0	-7690.93	-2089.51	6680.74	1859.74	7944.94	95.00	0.79	-0.61	-0.51
	14580.00	90.25	179.48	252.7	-7784.93	-2088.72	6680.28	1859.28	8037.16	94.00	0.10	-0.06	-0.07
	14675.00	90.55	179.82	252.7	-7879.92	-2088.14	6679.62	1858.62	8130.40	95.00	0.48	0.32	0.36
	14769.00	89.97	178.97	252.7	-7973.91	-2087.14	6679.19	1858.19	8222.58	94.00	1.09	-0.62	-0.90
	14864.00	90.18	179.67	252.7	-8068.91	-2086.02	6679.07	1858.07	8315.72	95.00	0.77	0.22	0.74
	14959.00	90.00	179.75	255.4	-8163.91	-2085.54	6678.92	1857.92	8408.99	95.00	0.21	-0.19	0.08
	15053.00	90.31	179.53	255.4	-8257.90	-2084.94	6678.66	1857.66	8501.25	94.00	0.40	0.33	-0.23
	15148.00	90.65	180.81	255.4	-8352.90	-2085.23	6677.87	1856.87	8594.65	95.00	1.39	0.36	1.35
	15243.00	90.22	179.16	255.4	-8447.89	-2085.20	6677.15	1856.15	8687.99	95.00	1.79	-0.45	-1.74
	15337.00	90.09	179.93	255.4	-8541.89	-2084.46	6676.89	1855.89	8780.22	94.00	0.83	-0.14	0.82
	15432.00	90.22	179.38	255.4	-8636.88	-2083.88	6676.64	1855.64	8873.47	95.00	0.59	0.14	-0.58
	15527.00	90.15	179.70	258.1	-8731.88	-2083.12	6676.33	1855.33	8966.67	95.00	0.34	-0.07	0.34
	15622.00	90.18	179.15	258.1	-8826.88	-2082.17	6676.06	1855.06	9059.85	95.00	0.58	0.03	-0.58
	15717.00	90.18	179.22	258.1	-8921.87	-2080.82	6675.76	1854.76	9152.94	95.00	0.07	0.00	0.07
	15811.00	90.12	179.51	258.1	-9015.86	-2079.77	6675.51	1854.51	9245.11	94.00	0.32	-0.06	0.31
	15906.00	90.25	179.31	260.8	-9110.85	-2078.80	6675.20	1854.20	9338.28	95.00	0.25	0.14	-0.21
	16001.00	89.88	179.16	258.1	-9205.84	-2077.53	6675.10	1854.10	9431.39	95.00	0.42	-0.39	-0.16
	16096.00	90.22	179.50	260.8	-9300.84	-2076.42	6675.01	1854.01	9524.53	95.00	0.51	0.36	0.36
	16190.00	90.09	178.86	260.8	-9394.83	-2075.07	6674.76	1853.76	9616.65	94.00	0.69	-0.14	-0.68
	16285.00	90.31	179.19	260.8	-9489.81	-2073.45	6674.43	1853.43	9709.69	95.00	0.42	0.23	0.35
	16380.00	90.03	178.88	260.8	-9584.80	-2071.85	6674.15	1853.15	9802.73	95.00	0.44	-0.29	-0.33
	16569.00	90.00	179.50	260.8	-9773.78	-2069.18	6674.10	1853.10	9987.94	189.00	0.33	-0.02	0.33
	16664.00	90.58	180.10	260.8	-9868.78	-2068.85	6673.62	1852.62	10081.23	95.00	0.88	0.61	0.63
	16758.00	90.12	179.93	260.8	-9962.77	-2068.88	6673.04	1852.04	10173.61	94.00	0.52	-0.49	-0.18
	16853.00	90.80	179.57	263.5	-10057.77	-2068.46	6672.28	1851.28	10266.88	95.00	0.81	0.72	-0.38
	16947.00	90.34	180.06	263.5	-10151.76	-2068.16	6671.34	1850.34	10359.19	94.00	0.71	-0.49	0.52
	17136.00	90.65	179.31	260.8	-10340.75	-2067.12	6669.71	1848.71	10544.71	189.00	0.43	0.16	-0.40
	17231.00	90.49	179.68	260.8	-10435.74	-2066.28	6668.77	1847.77	10637.90	95.00	0.42	-0.17	0.39
	17326.00	89.97	179.79	263.5	-10530.74	-2065.84	6668.38	1847.38	10731.17	95.00	0.56	-0.55	0.12
	17420.00	90.06	180.19	263.5	-10624.74	-2065.83	6668.36	1847.36	10823.54	94.00	0.44	0.10	0.43
Projection	17514.00	90.06	180.19	N/A	-10718.74	-2066.14	6668.26	1847.26	10915.97	94.00	0.00	-0.00	-0.00