



Gamma Ray

LWD MEMORY LOG

Scale:

1:240

True Vertical Depth

Depth Reference:

Driller's Depth

Status:

Final Print

API No: 05-123-48642

Job ID: 110462679

Permanent Datum (P.D.):

Log Measured From:

Company: Noble Energy

Well: Gutteresen YY06-775

Field: Wattenberg

County: Weld Country: United States

State: Colorado

Surface Location:

Latitude: 40° 11' 26.874" N

Longitude: 104° 28' 52.545" W

Other Services:

Directional

SEC: 30 TWN: 3N RGE: 63W

Elevation: 0.00 ft

Above P.D.: 4821.00 ft

Elev. KB: 4821.00 ft
Elev. DF: 4791.00 ft
Elev. GL:

N/A

Dates

From: 2020-07-22

To: 2020-07-24

Spud: 2020-07-11

Drilled (ft)

Top: 1942.00

Bottom: 17480.00

Logged (ft)

Top: 1942.00

Bottom: 17467.00

Azi Reference North:

Grid Dip Angle: (deg)

Total Magnetic Field Strength: (nT)

Magnetic Field Reference

Mag to Reference North Correction: (deg)

66.57

52003

7.26

Borehole Record

Casing Record

Hole Size (in)	From (ft)	To (ft)	Size (in)	Weight (lb/ft)	From (ft)	To (ft)
----------------	-----------	---------	-----------	----------------	-----------	---------

13.500	30.00	1942.00	9.625	36.00	30.00	1932.00
--------	-------	---------	-------	-------	-------	---------

8.500	1942.00	17480.00				
-------	---------	----------	--	--	--	--

--	--	--	--	--	--	--

--	--	--	--	--	--	--

--	--	--	--	--	--	--

--	--	--	--	--	--	--

--	--	--	--	--	--	--

--	--	--	--	--	--	--

--	--	--	--	--	--	--

--	--	--	--	--	--	--

--	--	--	--	--	--	--

--	--	--	--	--	--	--

--	--	--	--	--	--	--

--	--	--	--	--	--	--

Mud Record

Deviation Record

Type	From (ft)	To (ft)	Hole Size (in)	Interval (ft)	Inc Az (Start)	Inc Az (End)
------	-----------	---------	----------------	---------------	------------------	----------------

Oil Based Mud	1942.00	17480.00	8.500	15538.00	0.20 8.90	89.97 179.01
---------------	---------	----------	-------	----------	-------------	----------------

--	--	--	--	--	--	--

--	--	--	--	--	--	--

--	--	--	--	--	--	--

--	--	--	--	--	--	--

--	--	--	--	--	--	--

--	--	--	--	--	--	--

Acquisition System

Software Version

Other

Cadence

RT 5.7

Plot Studio

5.7.8906.1

Rig:

H&P 517

Contractor:

Helmerich & Payne Drilling Co

District:

RMA

Unit: D&E

(C) 2020 Baker Hughes Company - All rights reserved. Baker Hughes and its affiliates provides this information on an "as is" basis for general information purposes and believes it to be accurate as of the date of publication. Baker Hughes does not make any representation as to the accuracy or completeness of the information and makes no warranties of any kind, specific, implied or oral, to the fullest extent permissible by law, including those of merchantability and fitness for a particular purpose or use. Baker Hughes hereby disclaims any and all liability for any direct, indirect, consequential or special damages, claims for lost profits, or third party claims arising from the use of the information, whether a claim is asserted in contract, tort, or otherwise. The Baker Hughes logo is a trademark of Baker Hughes Company.

Log Run Summary

Run No	Bit Run No.	Bit Size (in)	Bit Type	Bit Gauge Length (in)	Assembly Type	Logged Interval		Bit Depth Interval		Date / Time		Circ. Hours (h)
						Top (ft)	Bottom (ft)	From (ft)	To (ft)	Start Logging	End Logging	
1	1	8.500	PDC	3.00	AutoTrak Curve	1929.03	17467.03	1942.00	17480.00	2020-07-21 01:32	2020-07-22 22:17	41.60

Crew

Name	Arrive	Depart	Name	Arrive	Depart	Name	Arrive	Depart
------	--------	--------	------	--------	--------	------	--------	--------

	Wellsite	Wellsite		Wellsite	Wellsite		Wellsite	Wellsite
Andrea Guidry	2020-07-20	2020-07-22	Chris Campbell	2020-07-20	2020-07-23	Jeremiah Samson	2020-07-20	2020-07-23
Marco Favela	2020-07-20	2020-07-23	Tien Bui	2020-07-20	2020-07-24	John Bryson	2020-07-22	2020-07-22

Mud Properties Record

Date / Time	Run No.	Depth (ft)	Mud Type	Density (ppg)	Viscosity (cP)	pH	Fluid Loss (cm3)	Oil / Water	Source	Total Chlorides (ppm)	K+ (%)
2020-07-20 19:43	1	1942.00	Oil Based Mud	9.2	14	N/A	20.0	68/20	Active Pit	26500	0.00
2020-07-23 08:10	1	15200.00	Oil Based Mud	9.6	14	N/A	16.8	71/18	Active Pit	25000	0.00

Equipment and Service Data

Run No.	Tool	Serial Number	Measurement	Sensor Offset (ft)	Bit Offset (ft)	Max O.D. (in)	Min I.D. (in)
1	AutoTrak Curve Steering Unit	14236901	Near Bit VSS	5.93	6.80	7.000	4.330
1	AutoTrak Curve Steering Unit	14236901	Near Bit Inclination	5.93	6.80	7.000	4.330
1	AutoTrak Curve MWD	12118955	Gamma (single)	2.75	12.97	7.000	3.250
1	AutoTrak Curve MWD	12118955	Directional (mag)	12.27	22.49	7.000	3.250

Service and Tool Mnemonics

Mnemonic	Name	Description
ATC SU	AutoTrak Curve SU	Auto Trak Curve Steering Unit
ATC MWD	AutoTrak Curve MWD	Auto Trak Curve MWD
ATC LCPM	AutoTrak Curve LCPM	Auto Trak Curve LCPM

Comments

1	Depth measurements were obtained from a depth control system not supplied or operated by Baker Hughes. Due to lack of control by Baker Hughes logging engineers, depth calibrations and measurements could not be independently verified.
2	Baker Hughes LWD Run 1 utilized 6 ¾ inch NaviGamma service (Gamma Ray and Directional) behind an 8 1/2 inch bit and rotary steerable assembly from 1942 to 17480 feet MD (1942 to 6684 feet TVD).
3	The Gamma Ray Apparent (GRAM) data is presented 0 to 300 API, per the customer's request.

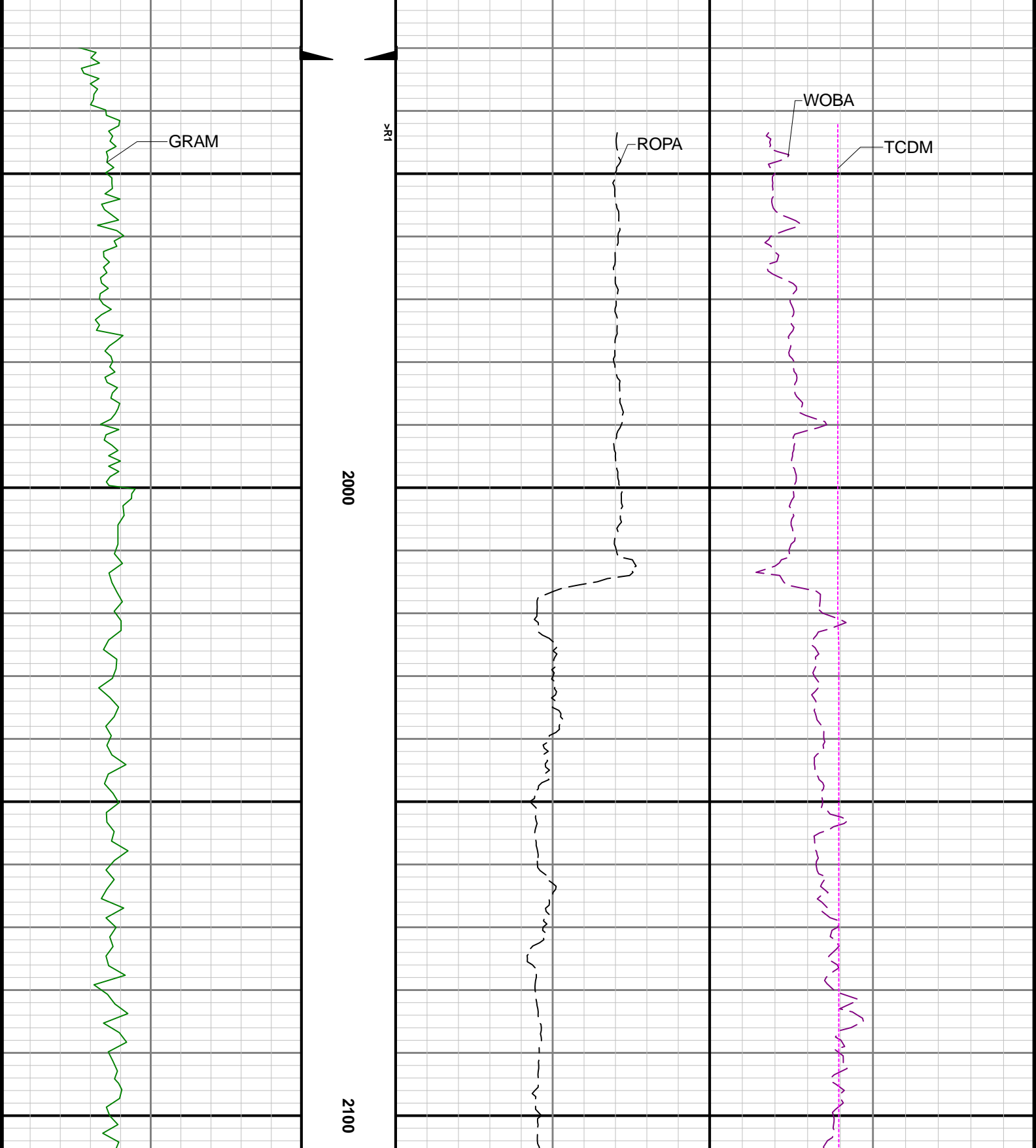
Remarks

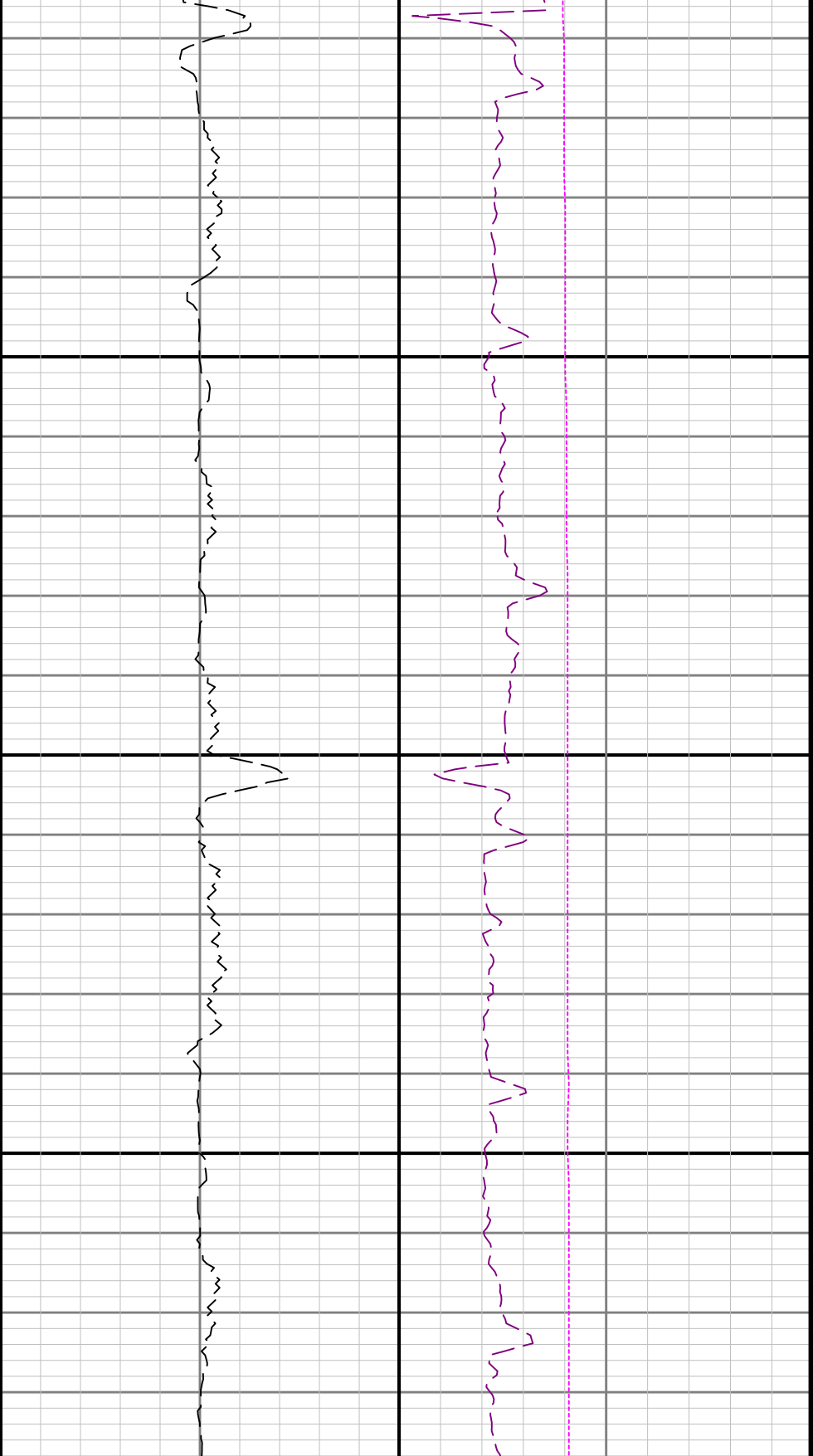
Number	Depth (ft)	Hole Section (in)	Run No.	Remark
--------	---------------	----------------------	---------	--------

Curve Mnemonics

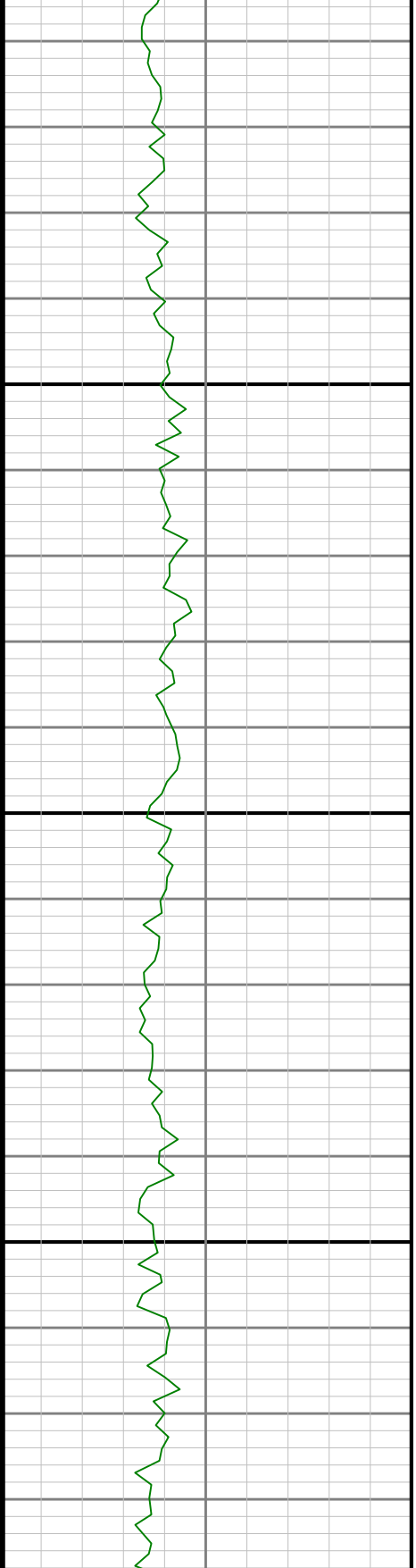
Presented Curves	Description	Units
ROPA	Depth Averaged ROP 3 ft Average	ft/h
WOBA	Weight On Bit 1 ft Average	klb
GRAM	Gamma Ray - Apparent - Memory 0.5 ft Average	API
TCDM	Directional Real-Time Survey Temperature	degF

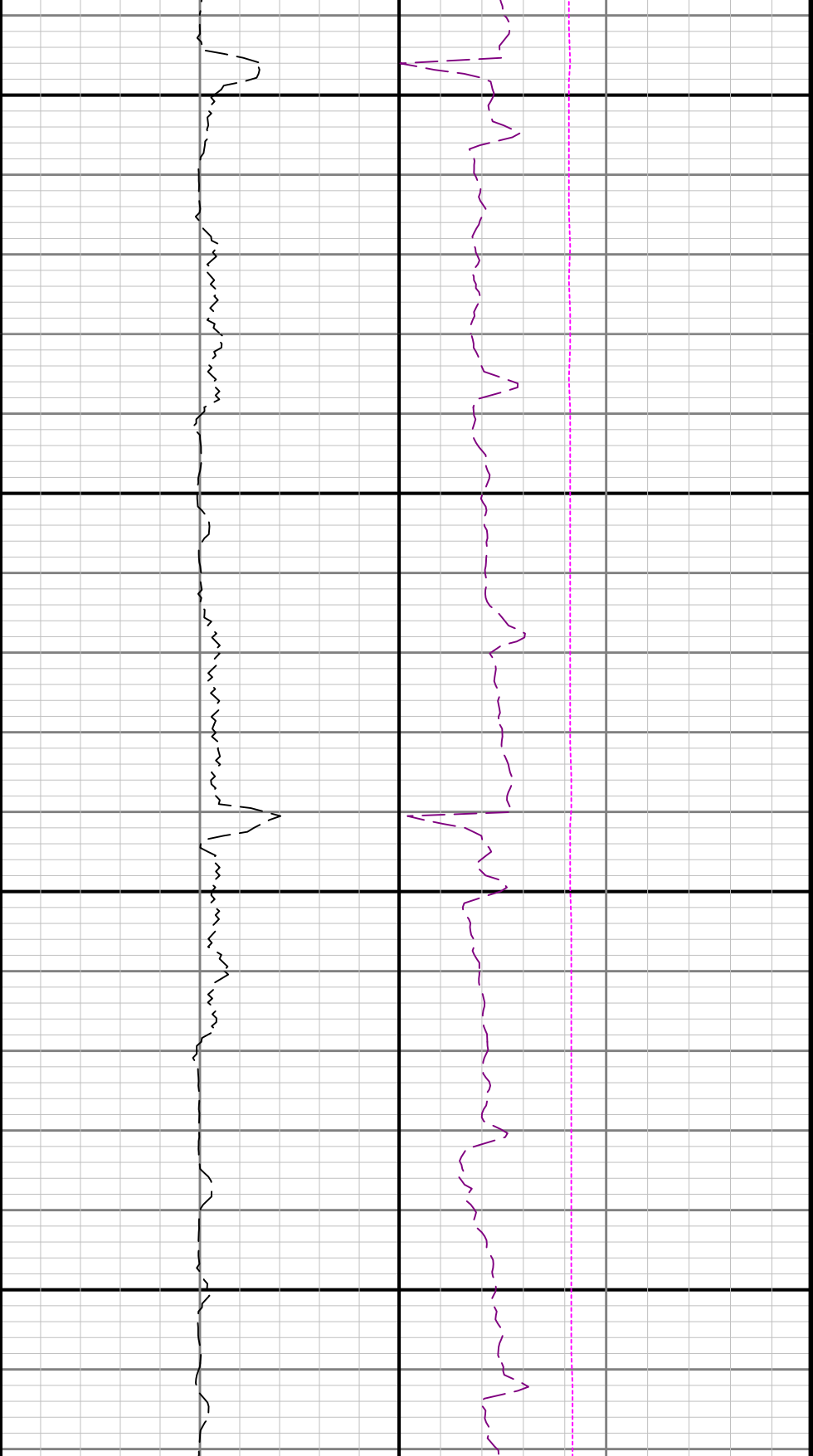
Gamma Ray - Apparent 0.5 ft Average GRAM 0300	TVD 1:240 feet	Depth Averaged ROP 3 ft Average ROPA 1000_____0	Weight On Bit, Average 1 ft Average WOBA 0_____50
API		ft/h	klb
			Downhole Temperature TCDM 0_____300
			degF





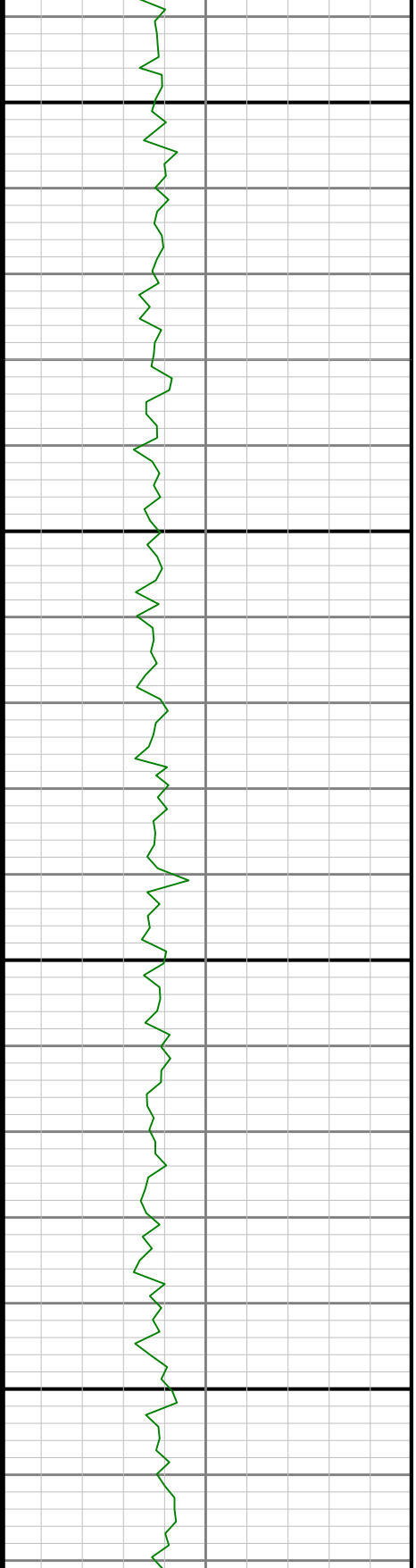
2200

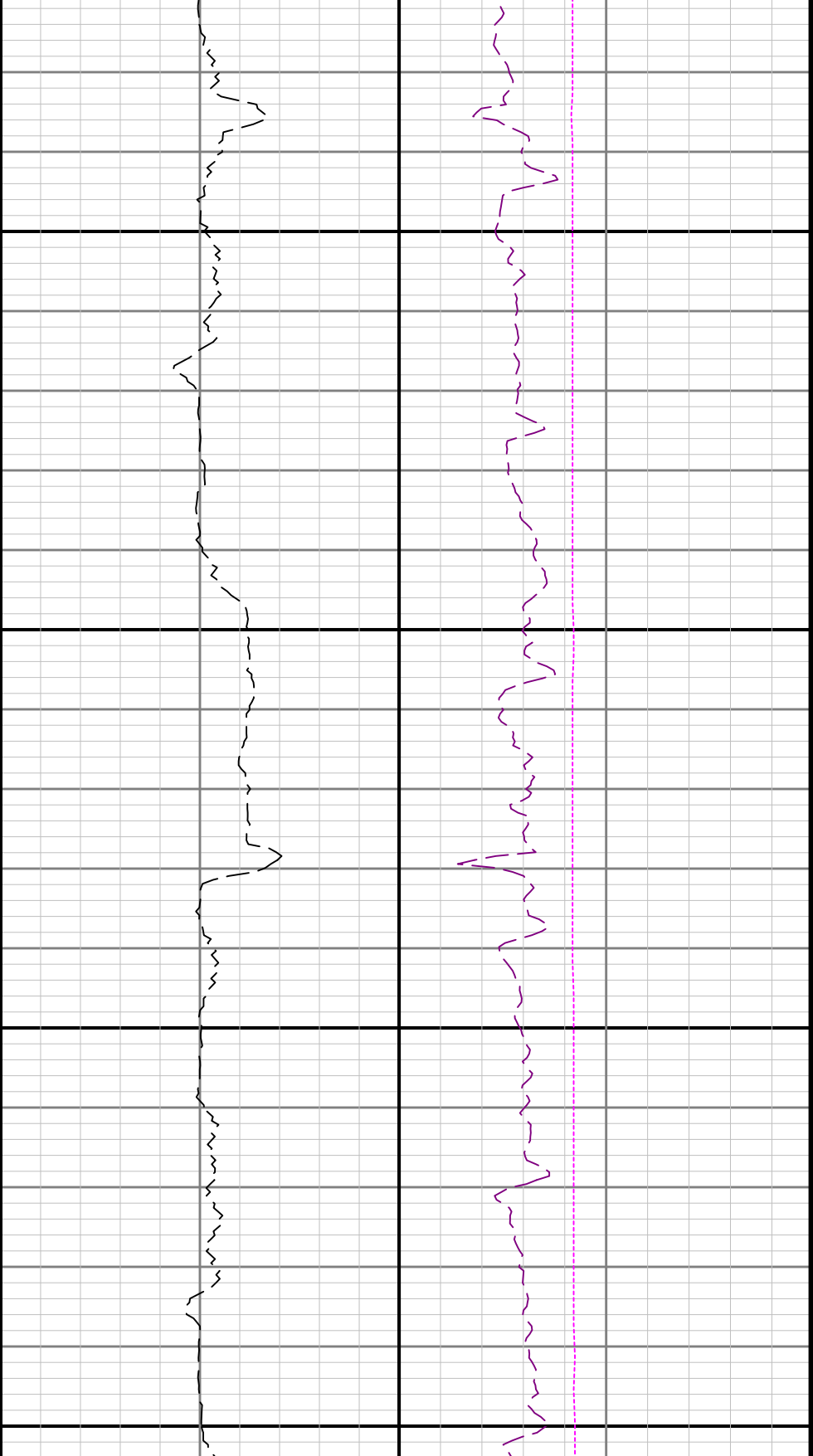




2300

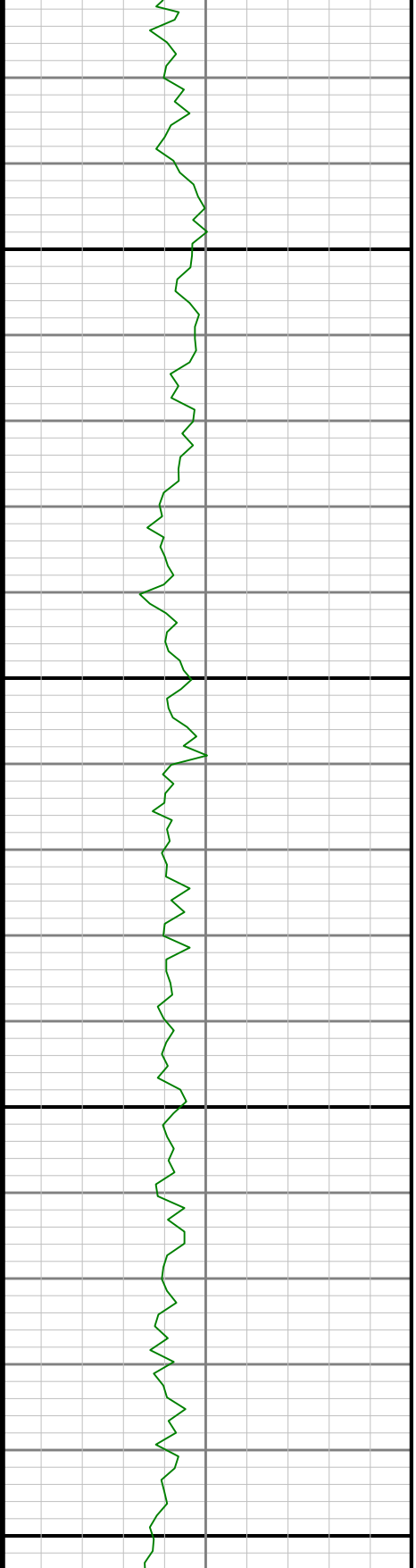
2400

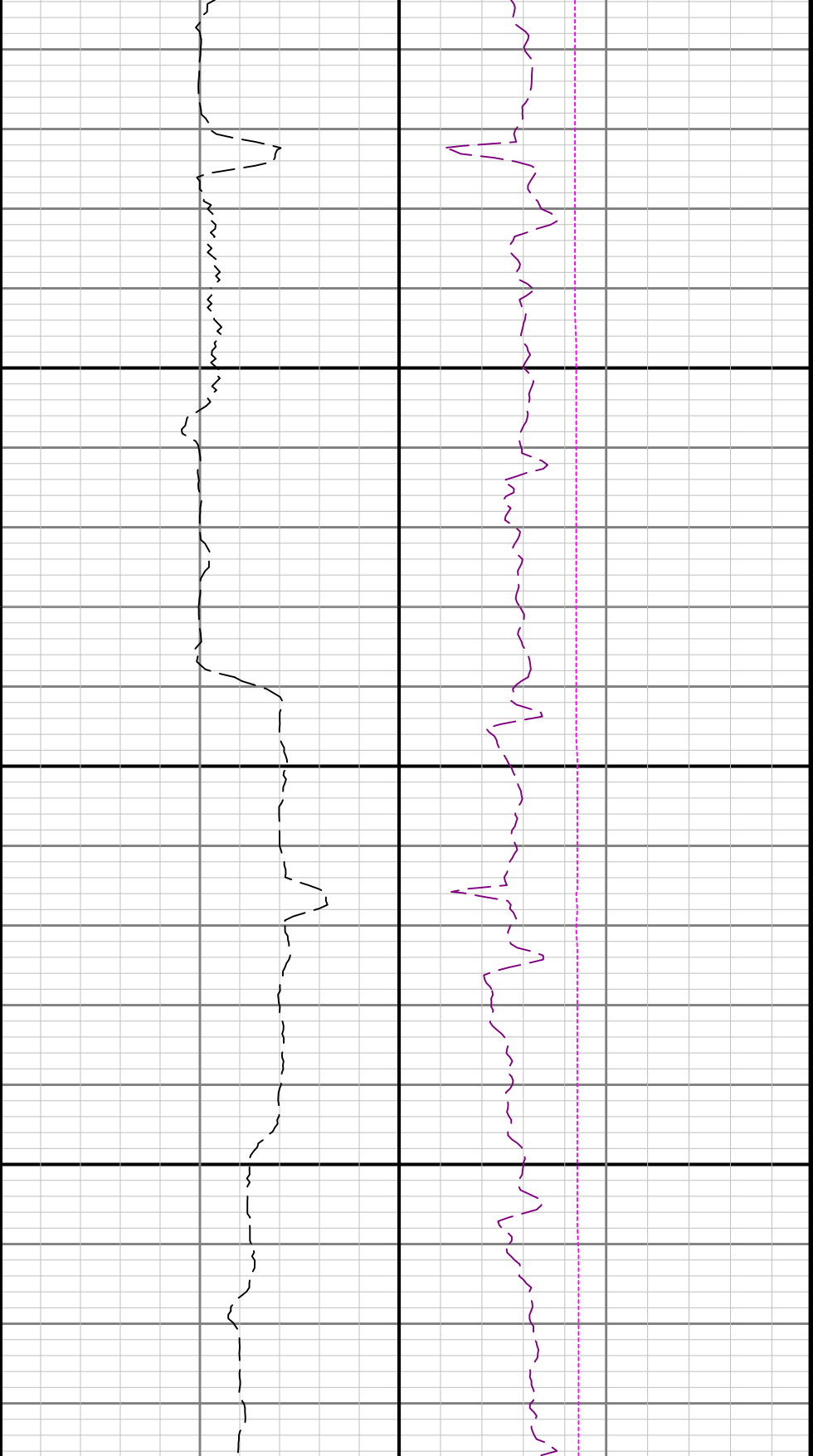




2500

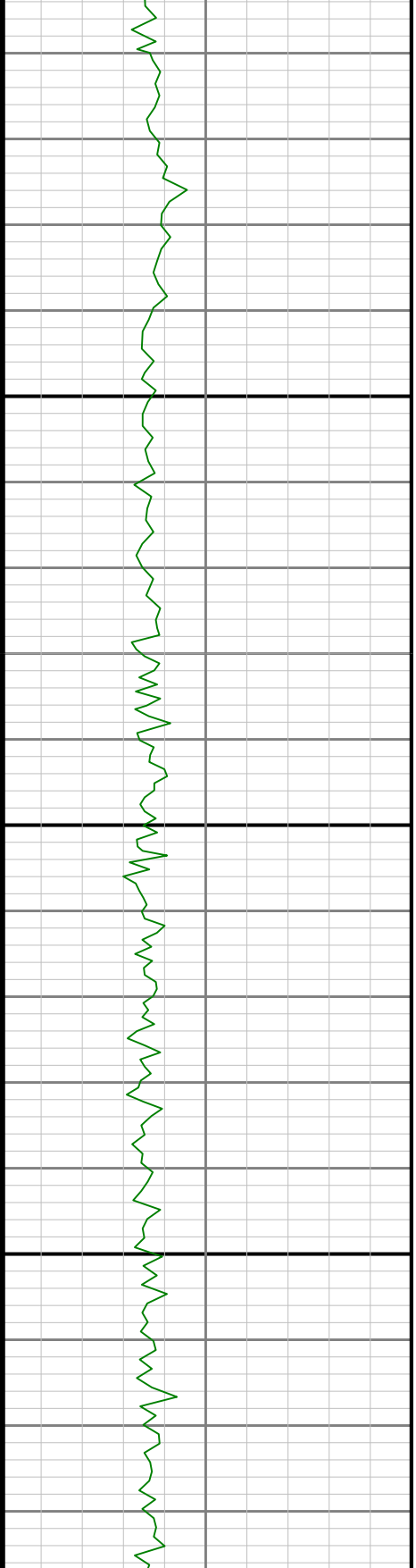
2600

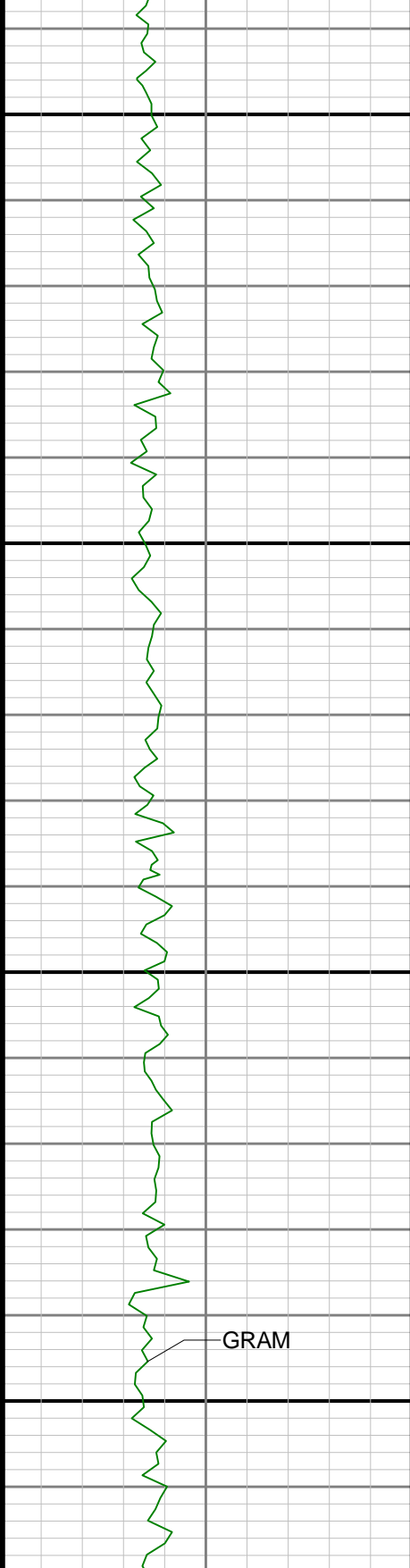




2700

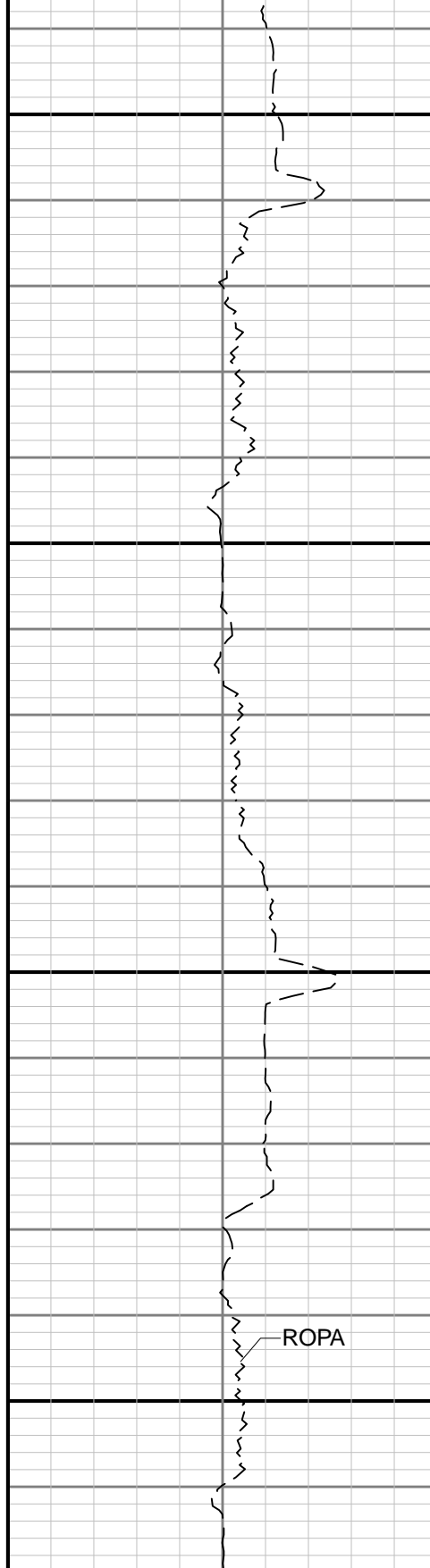
2800

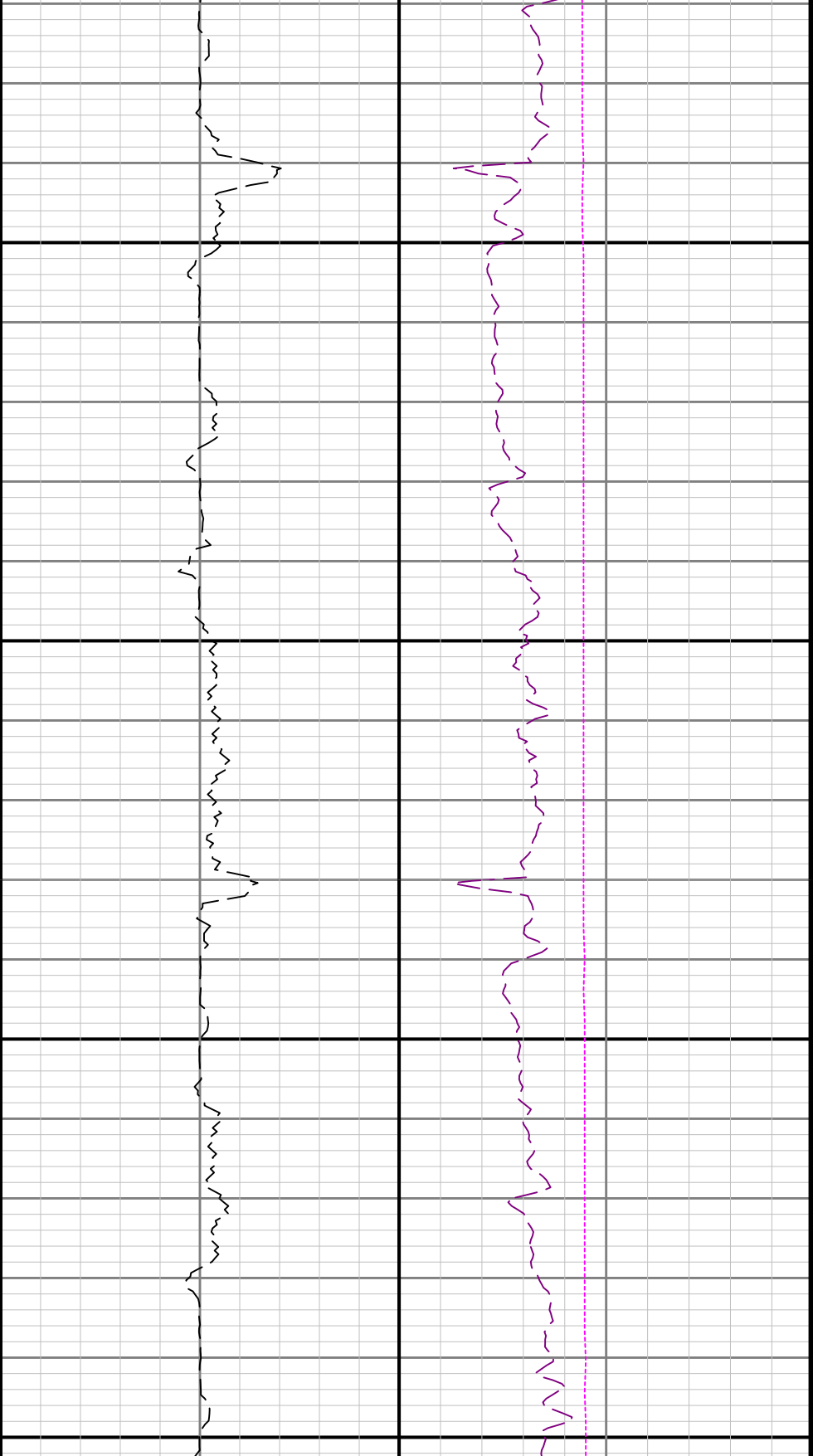




2900

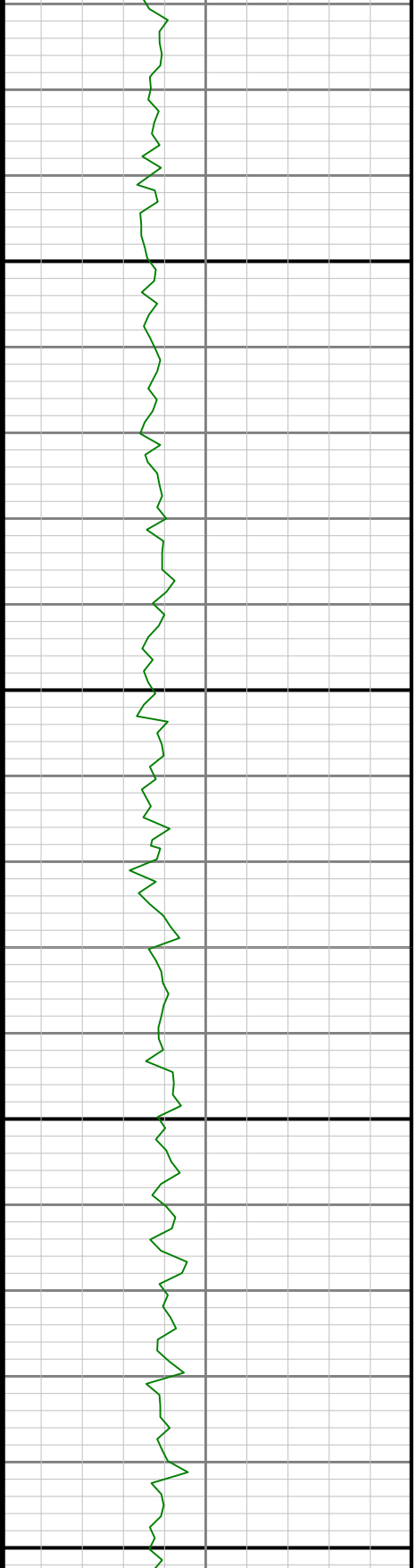
3000

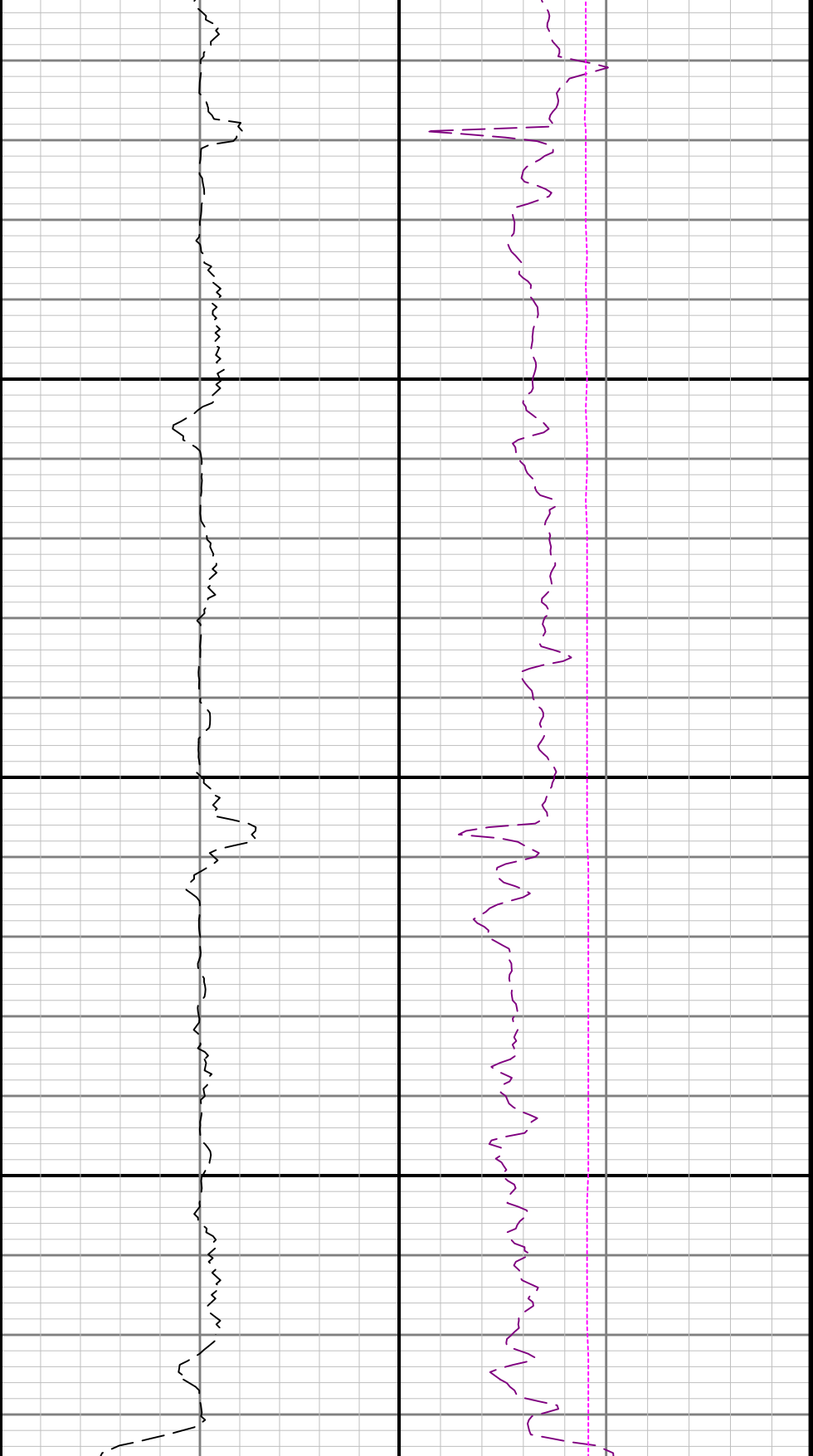




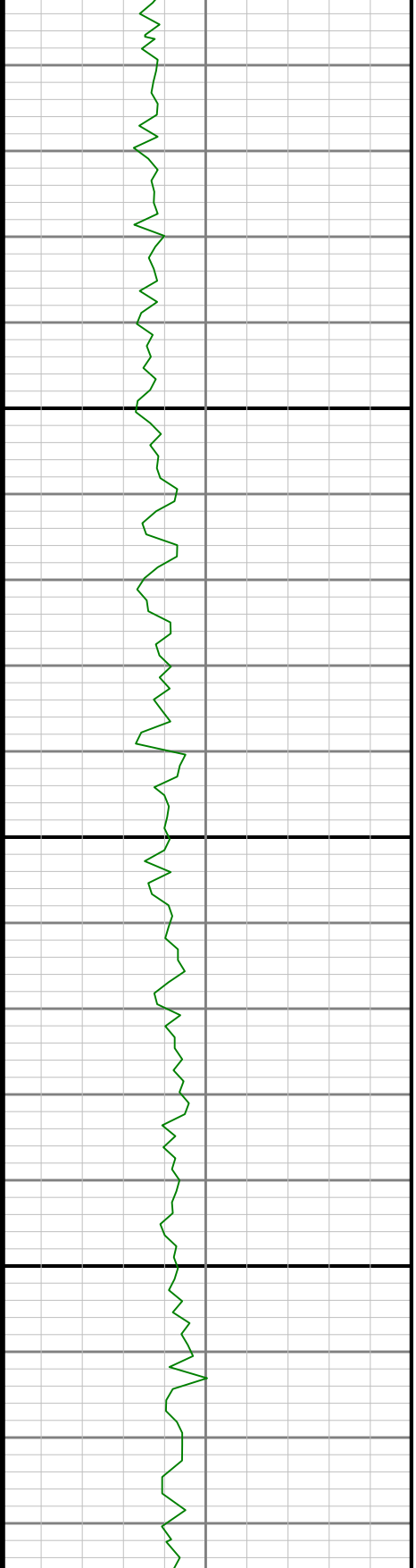
3100

3200





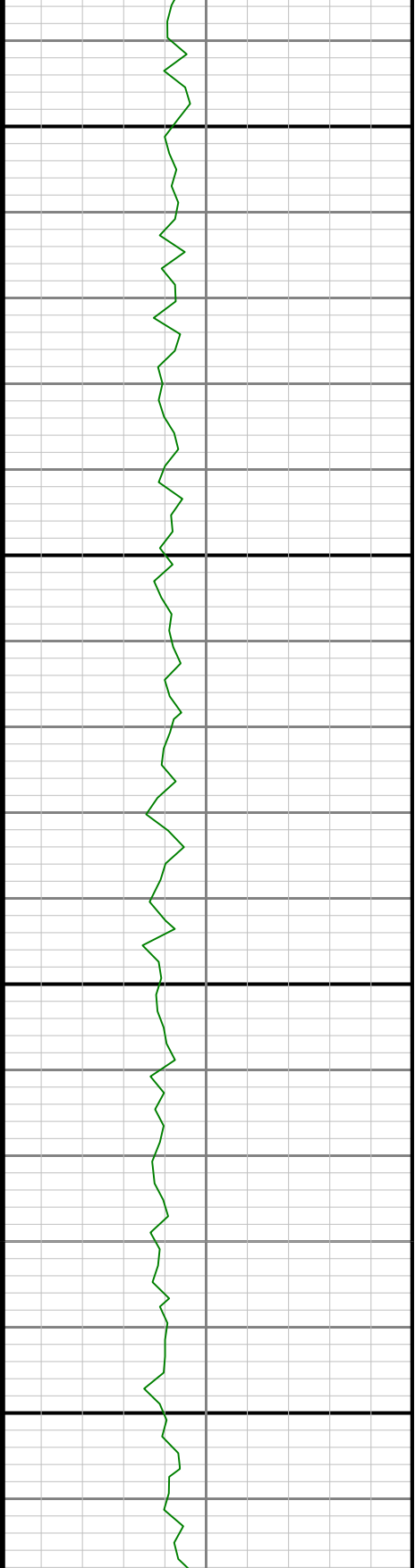
3300

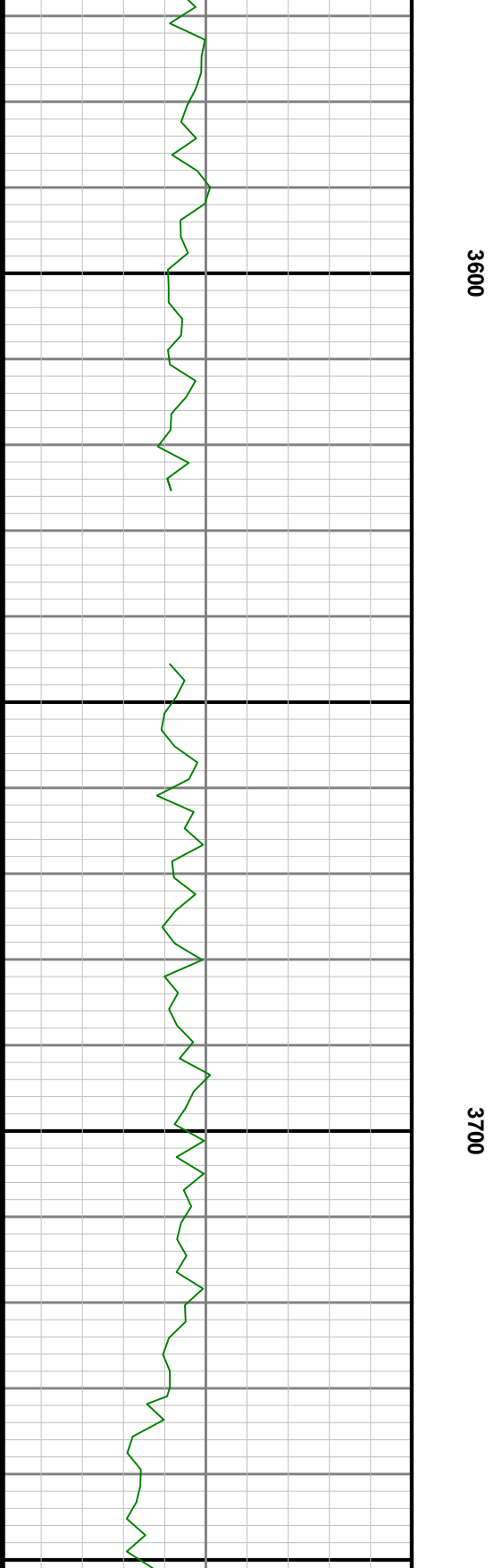


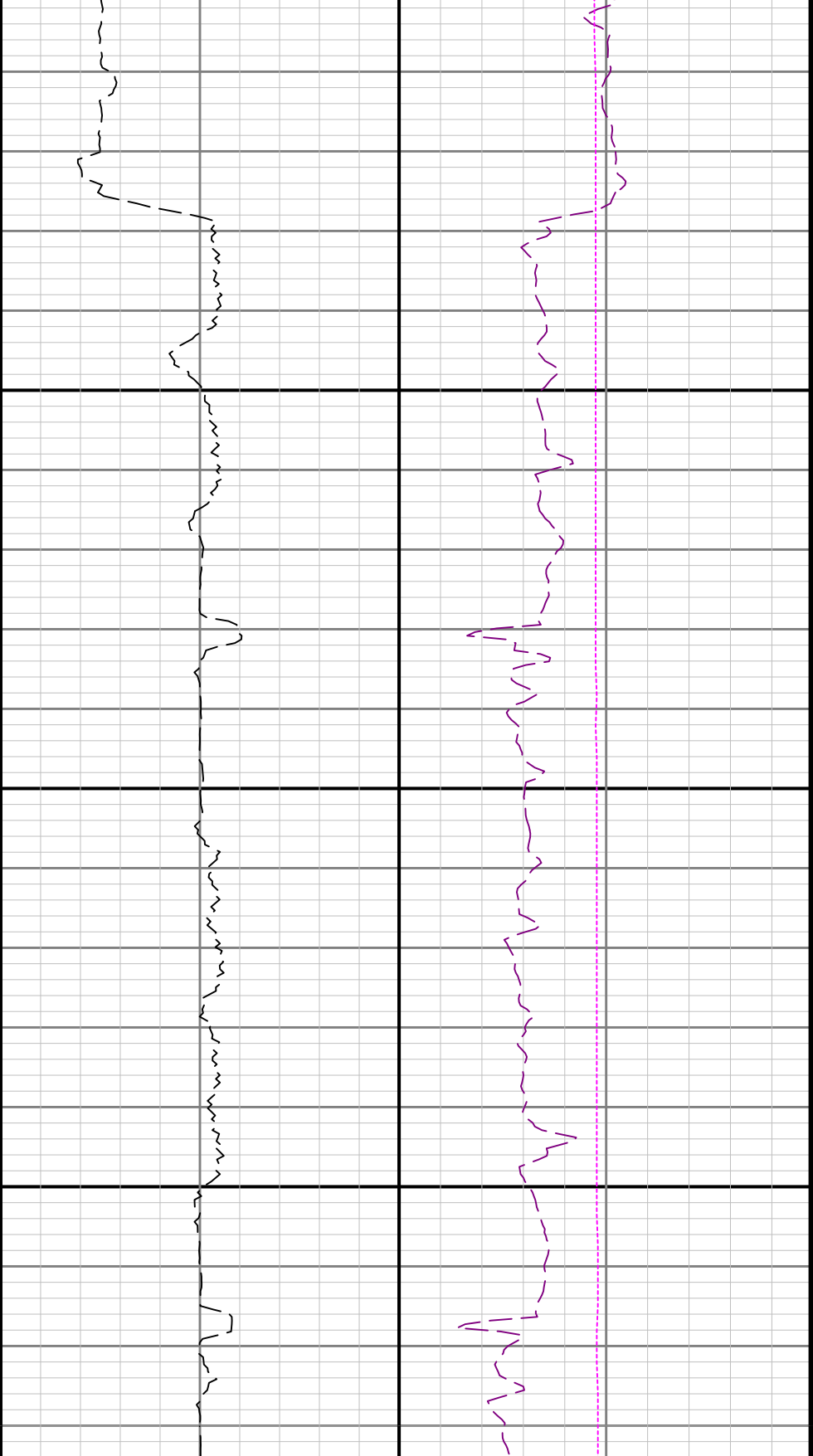


3400

3500

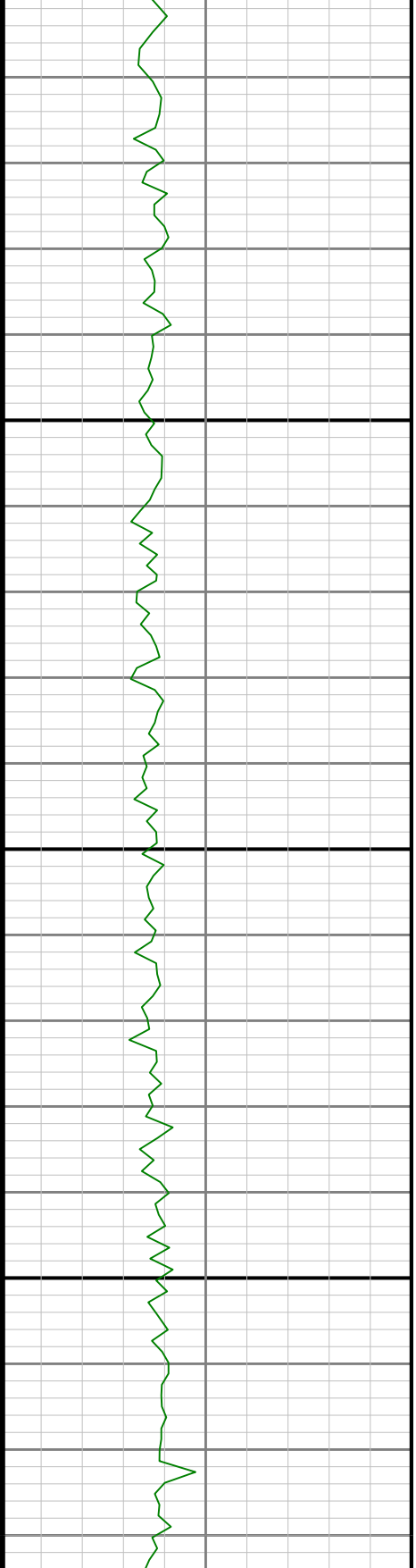


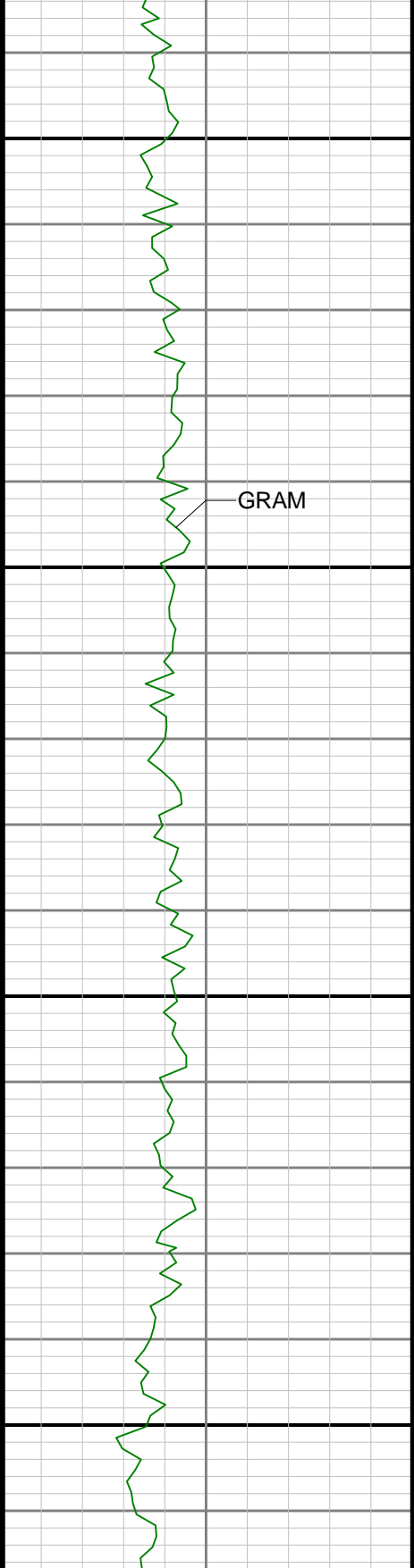




3800

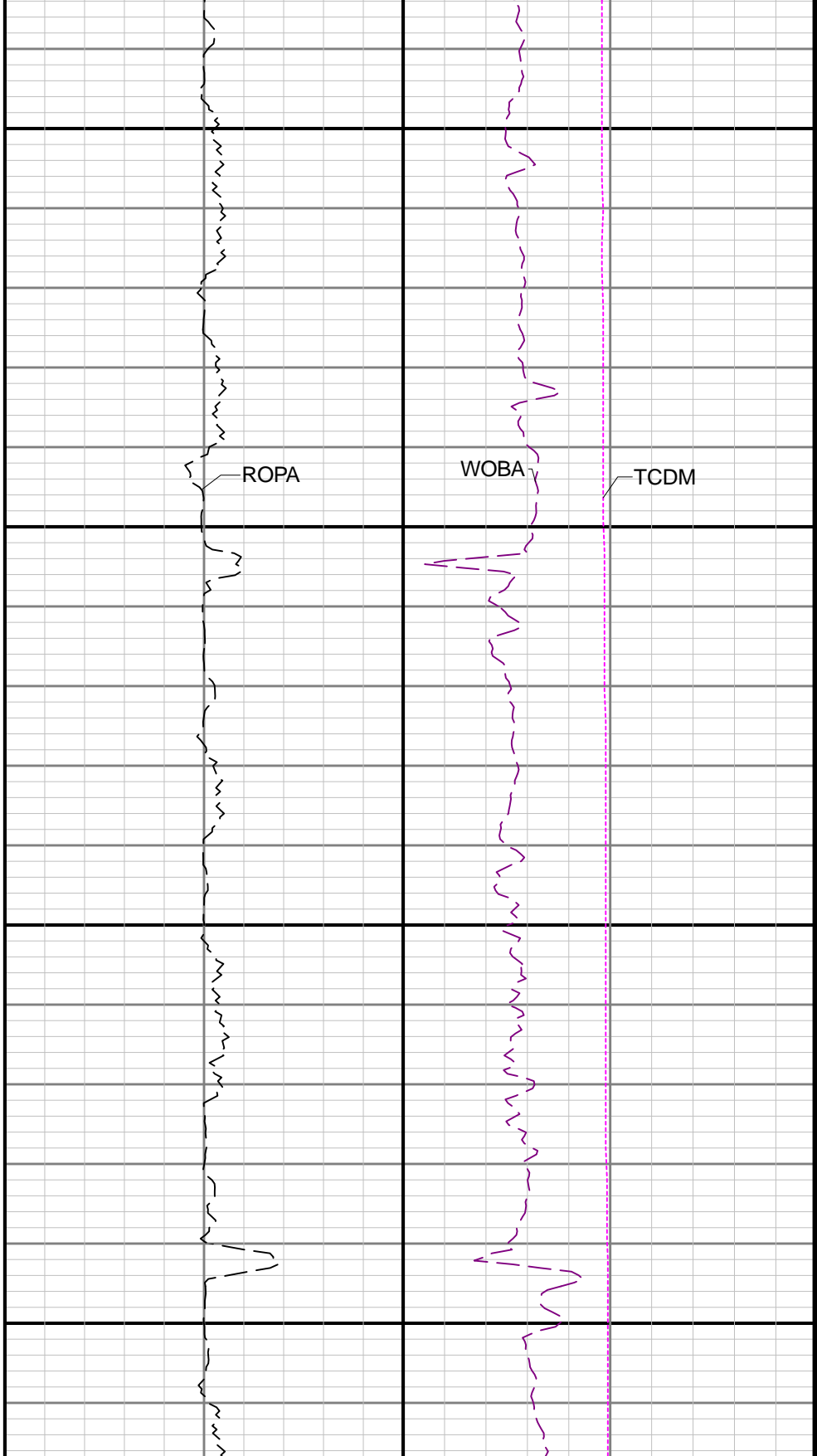
3900

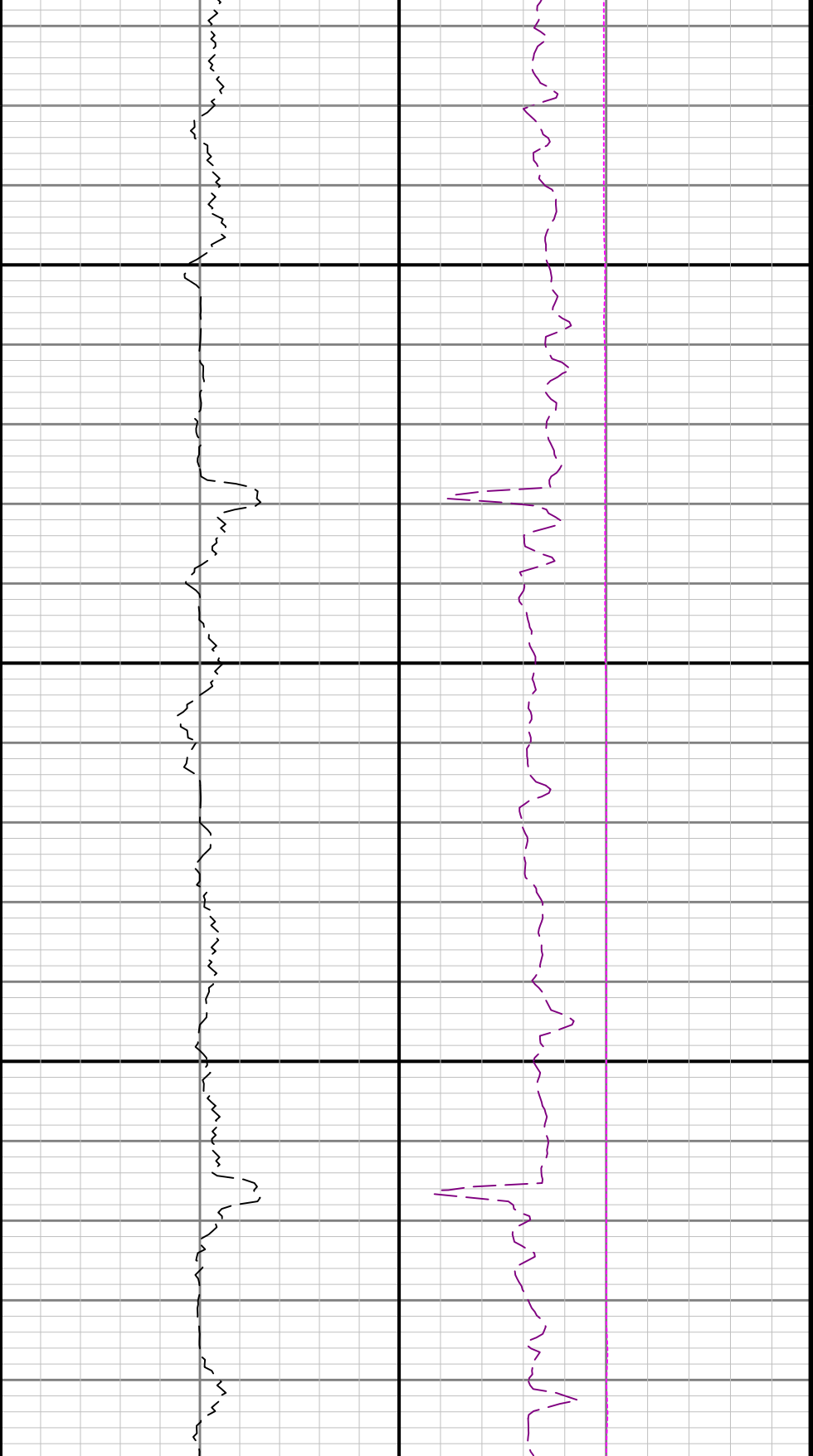




4000

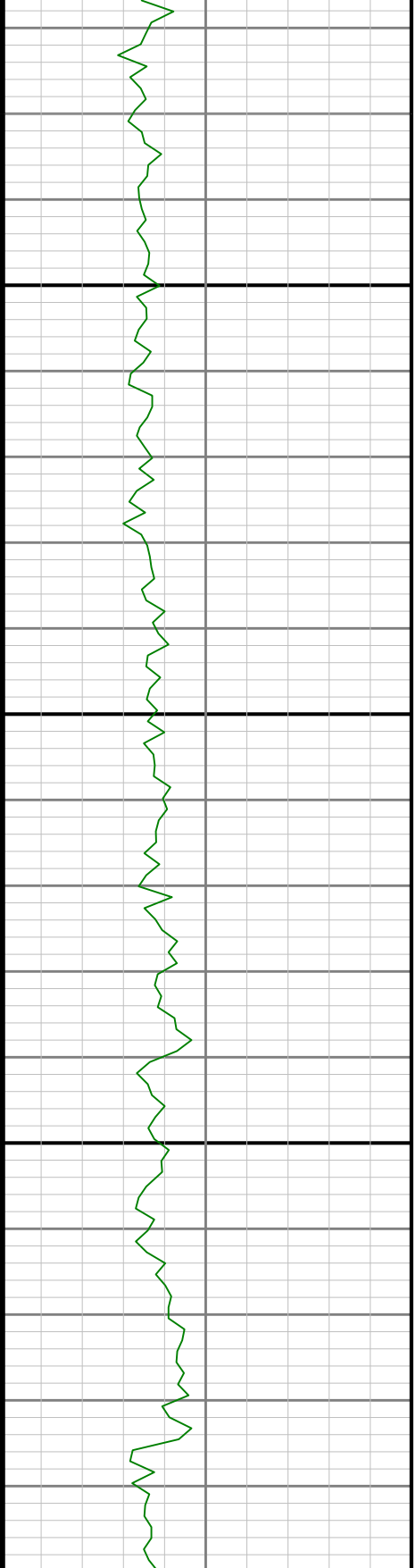
4100

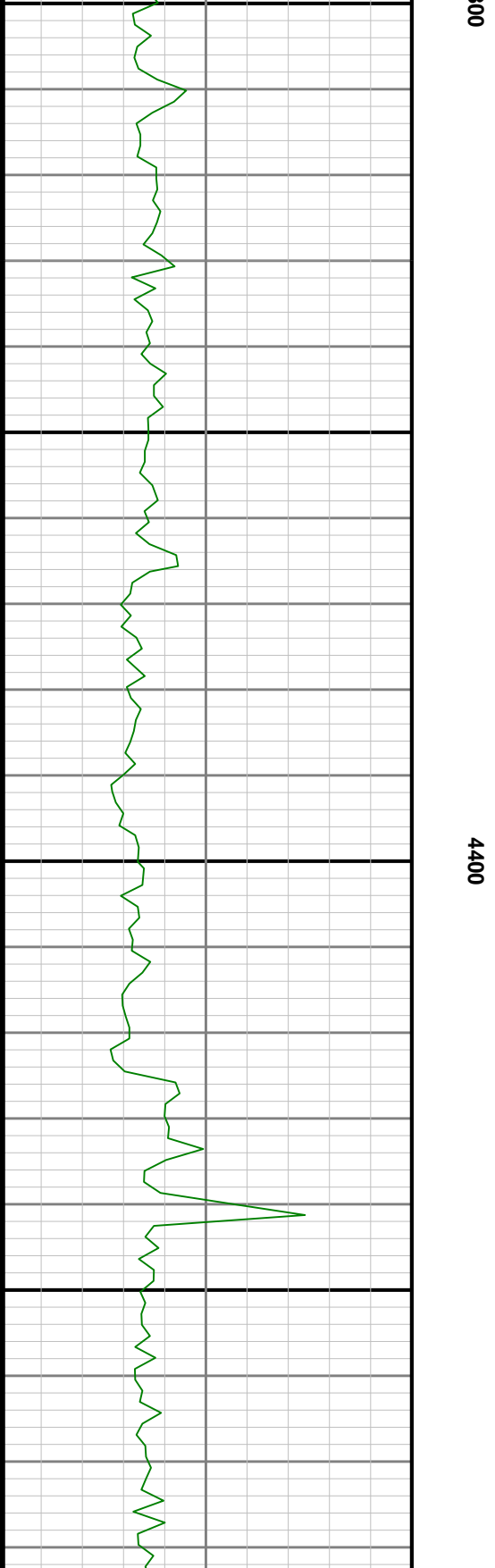
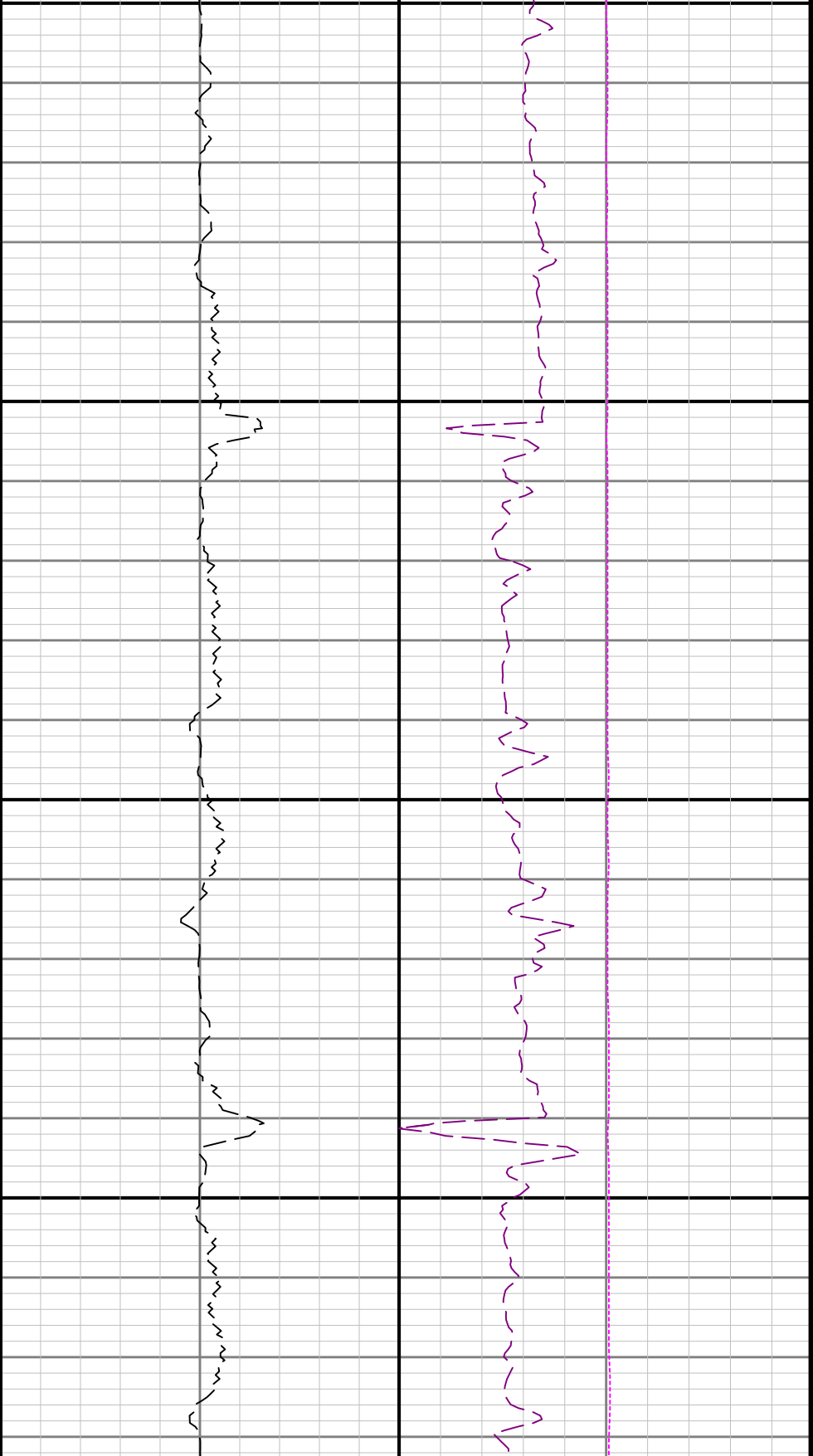


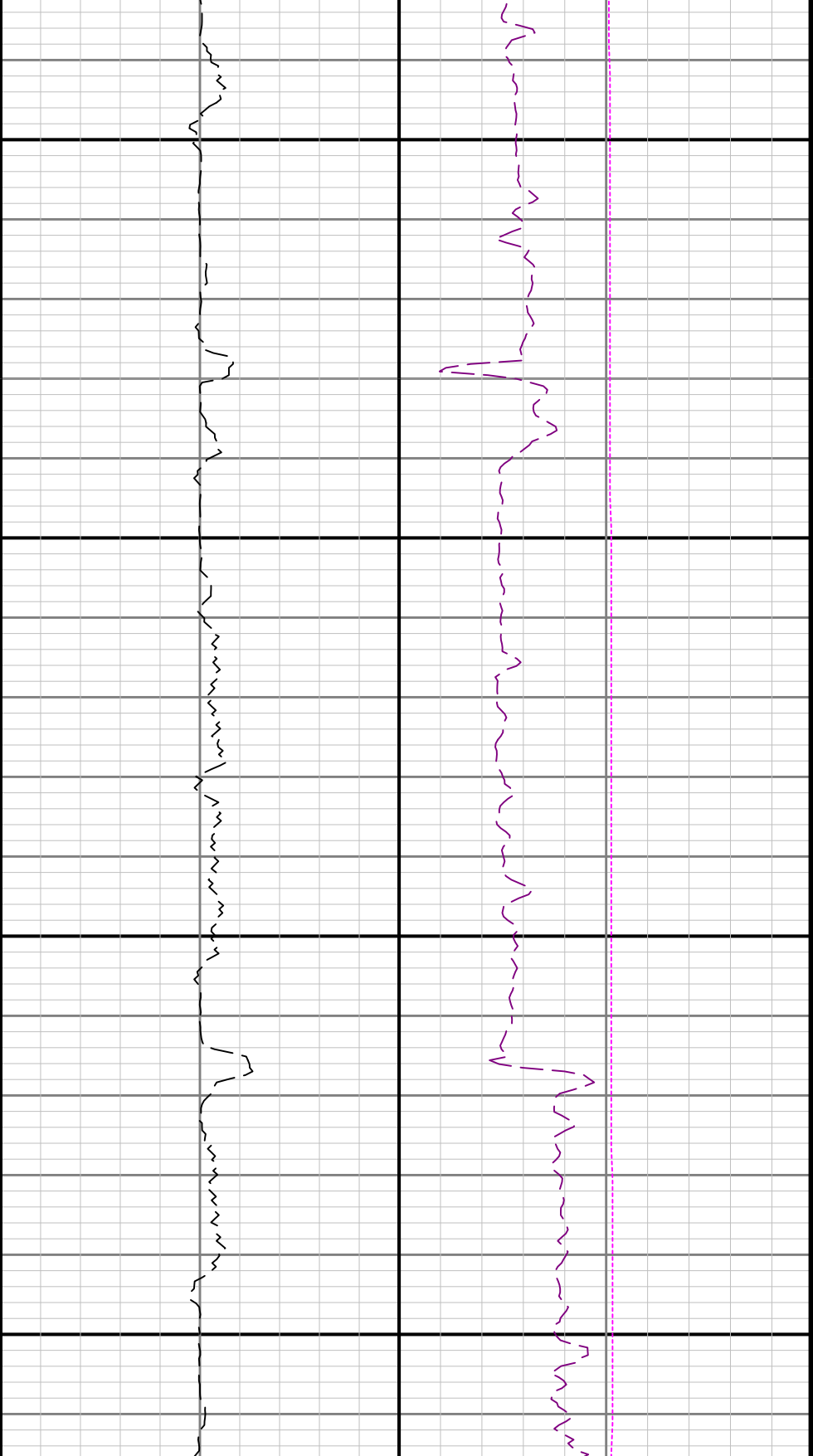


4200

43

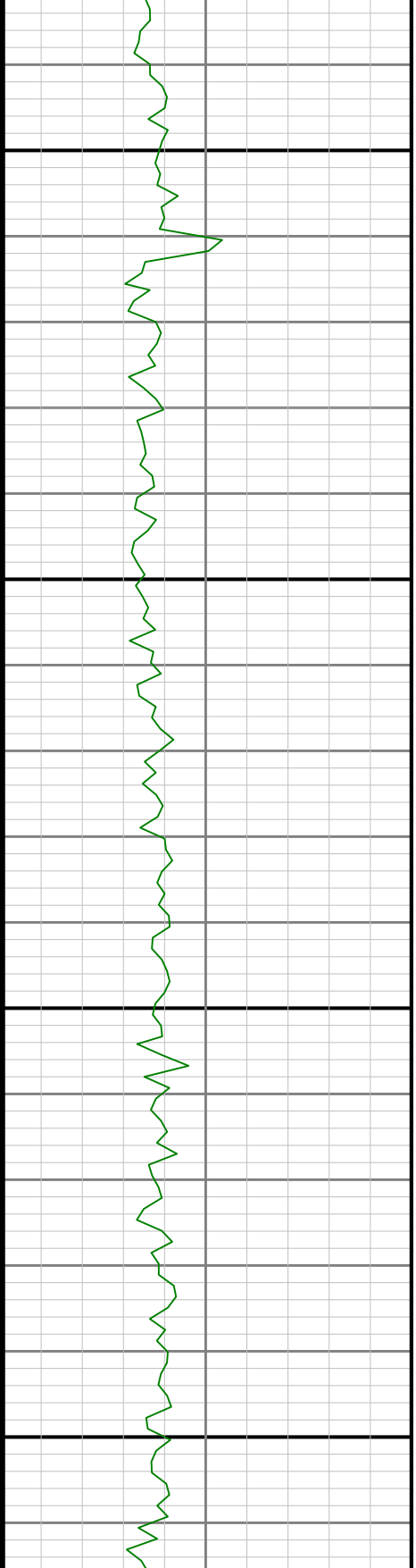


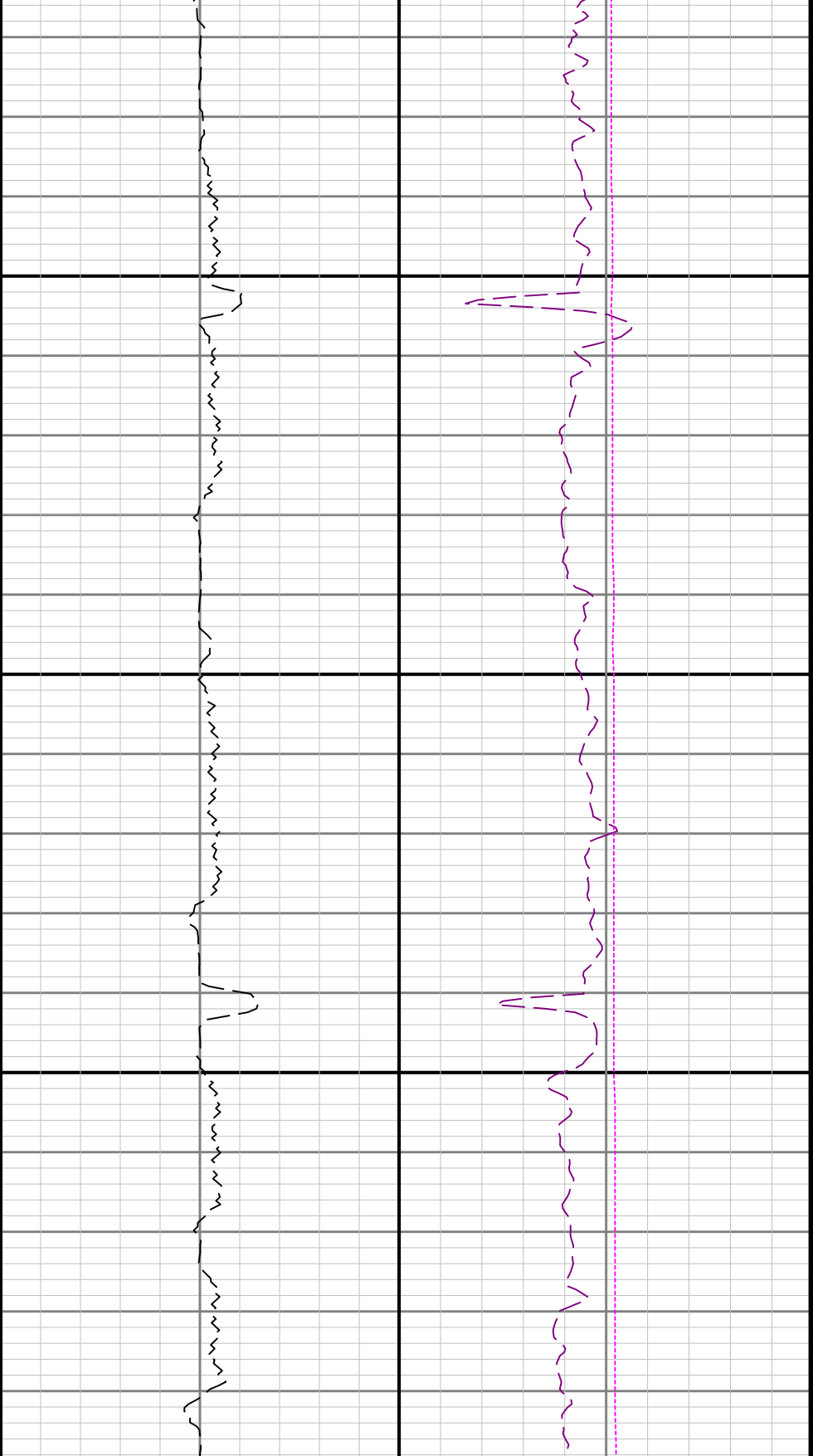




4500

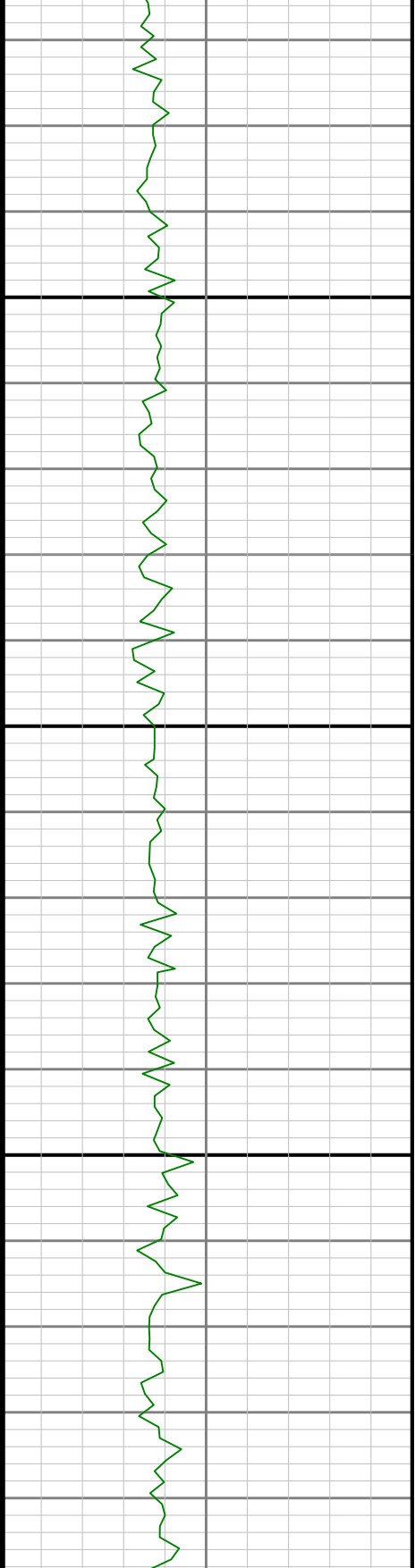
4600

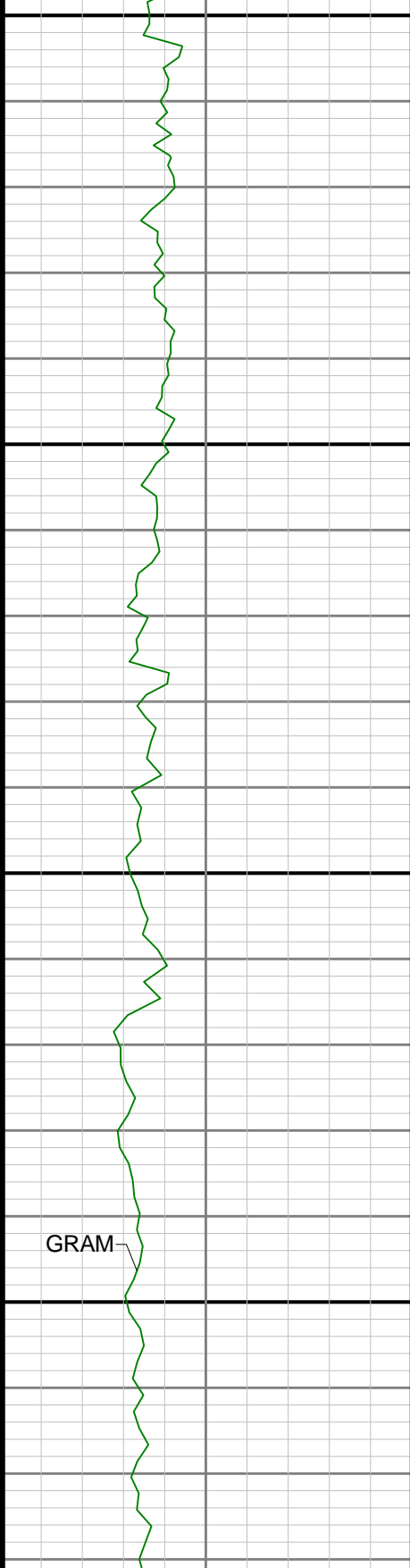




4700

4800





4900

5000

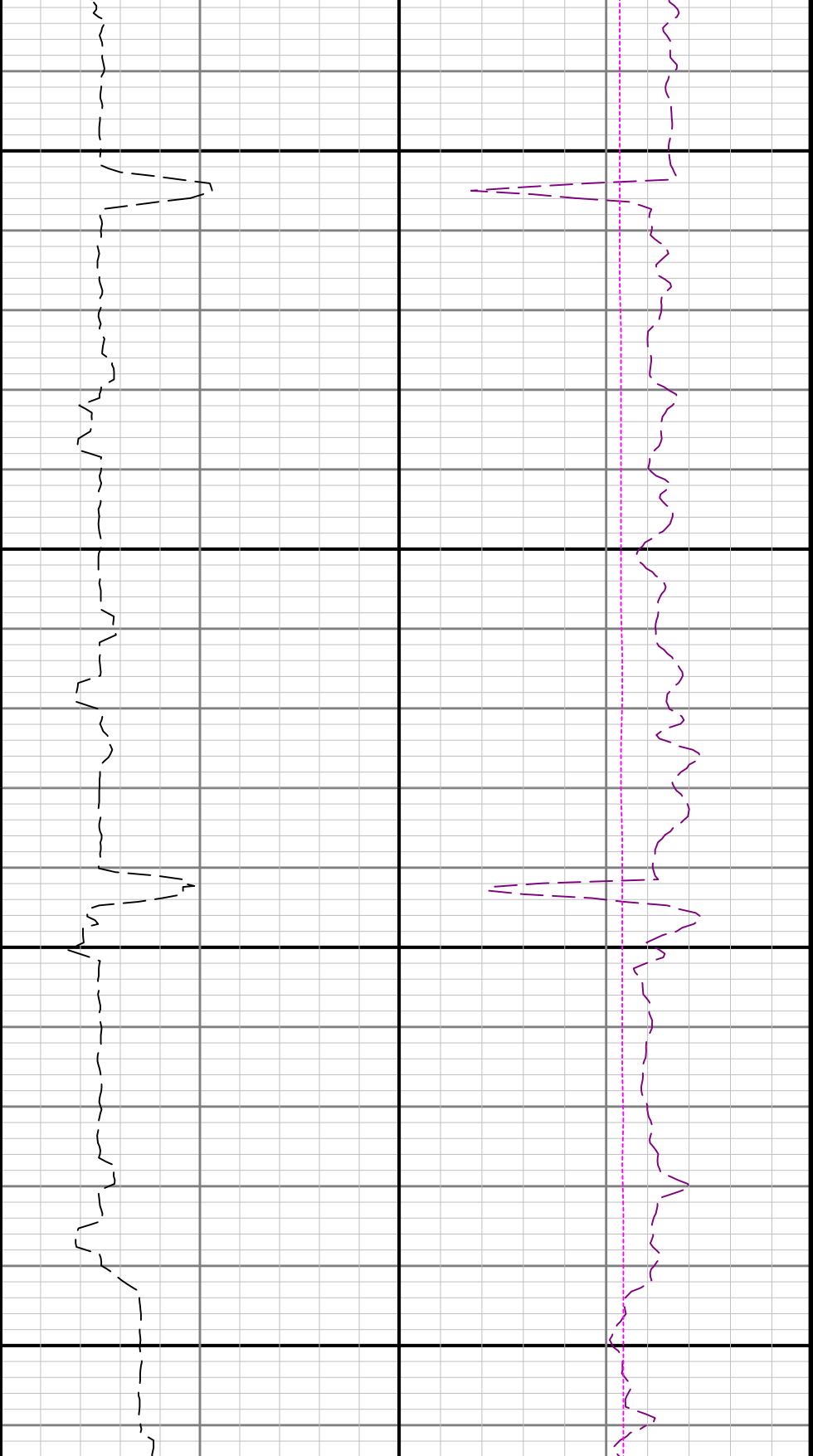


ROPA



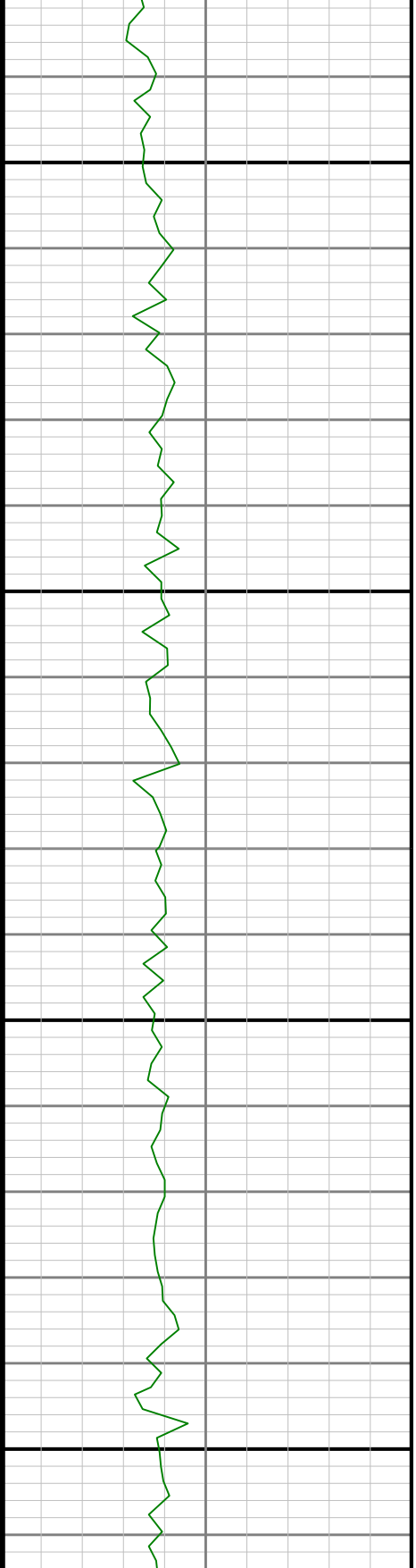
TCDM

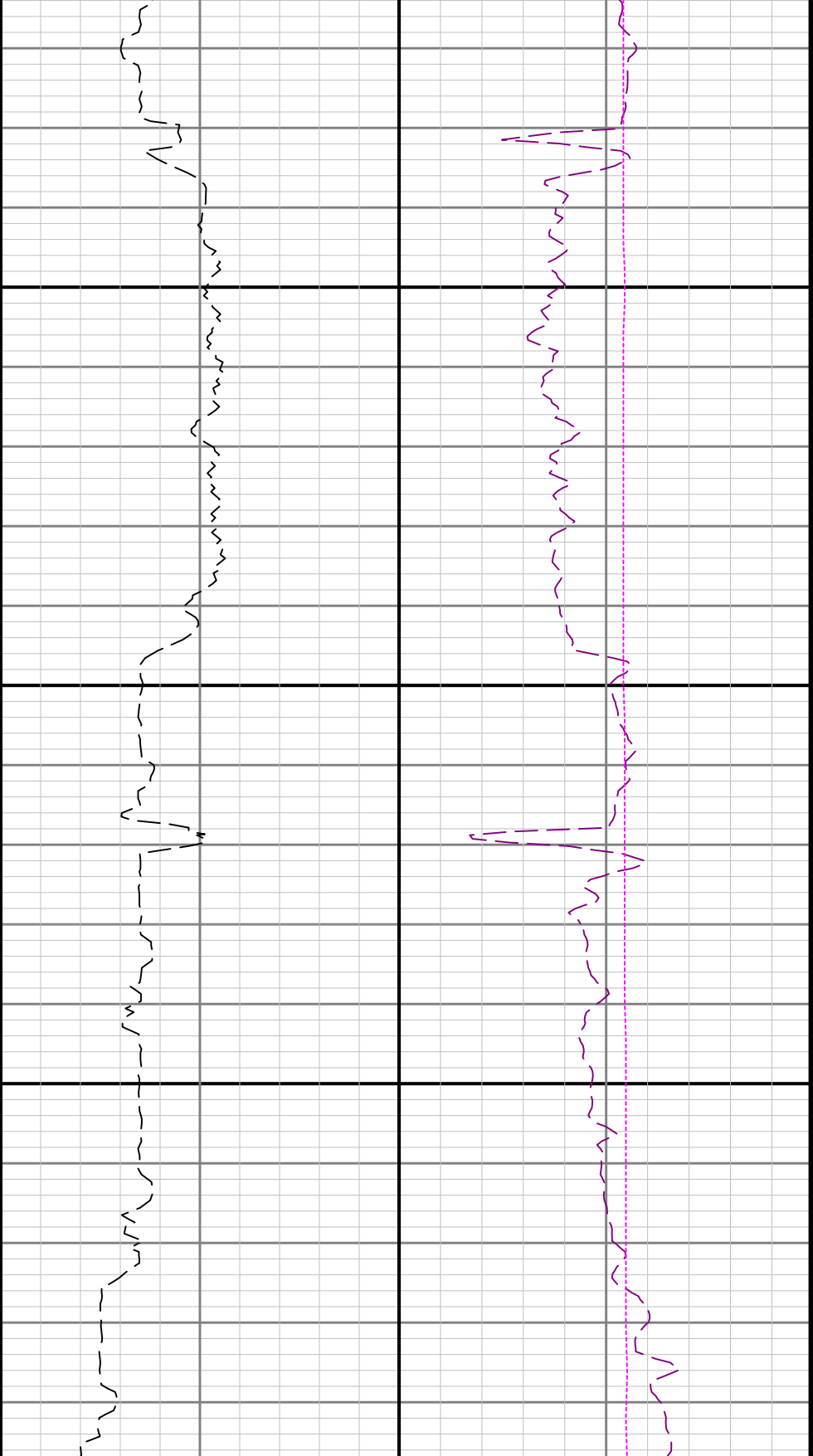
WOBA



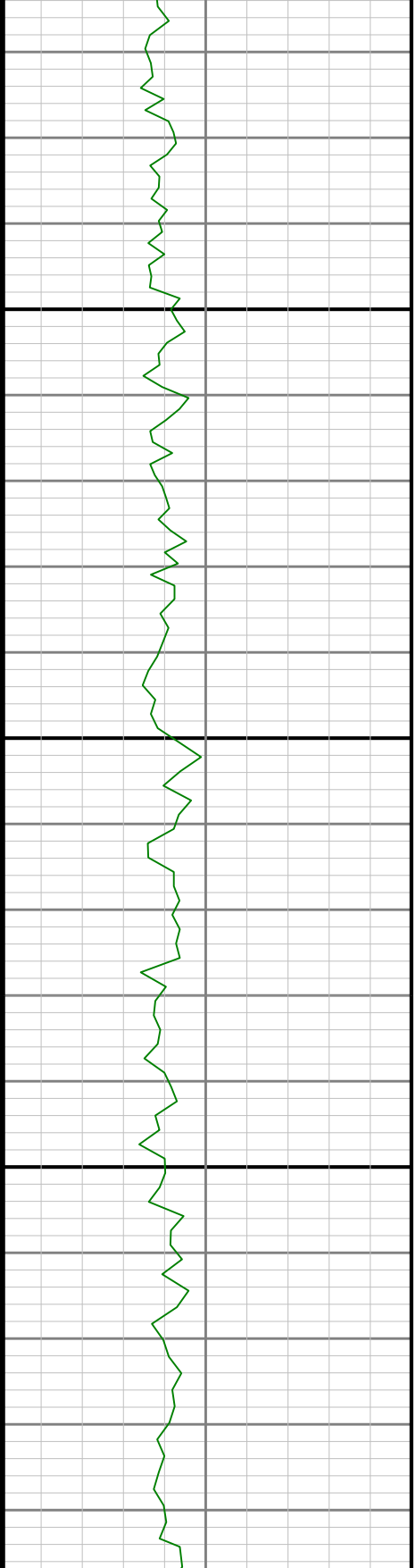
5100

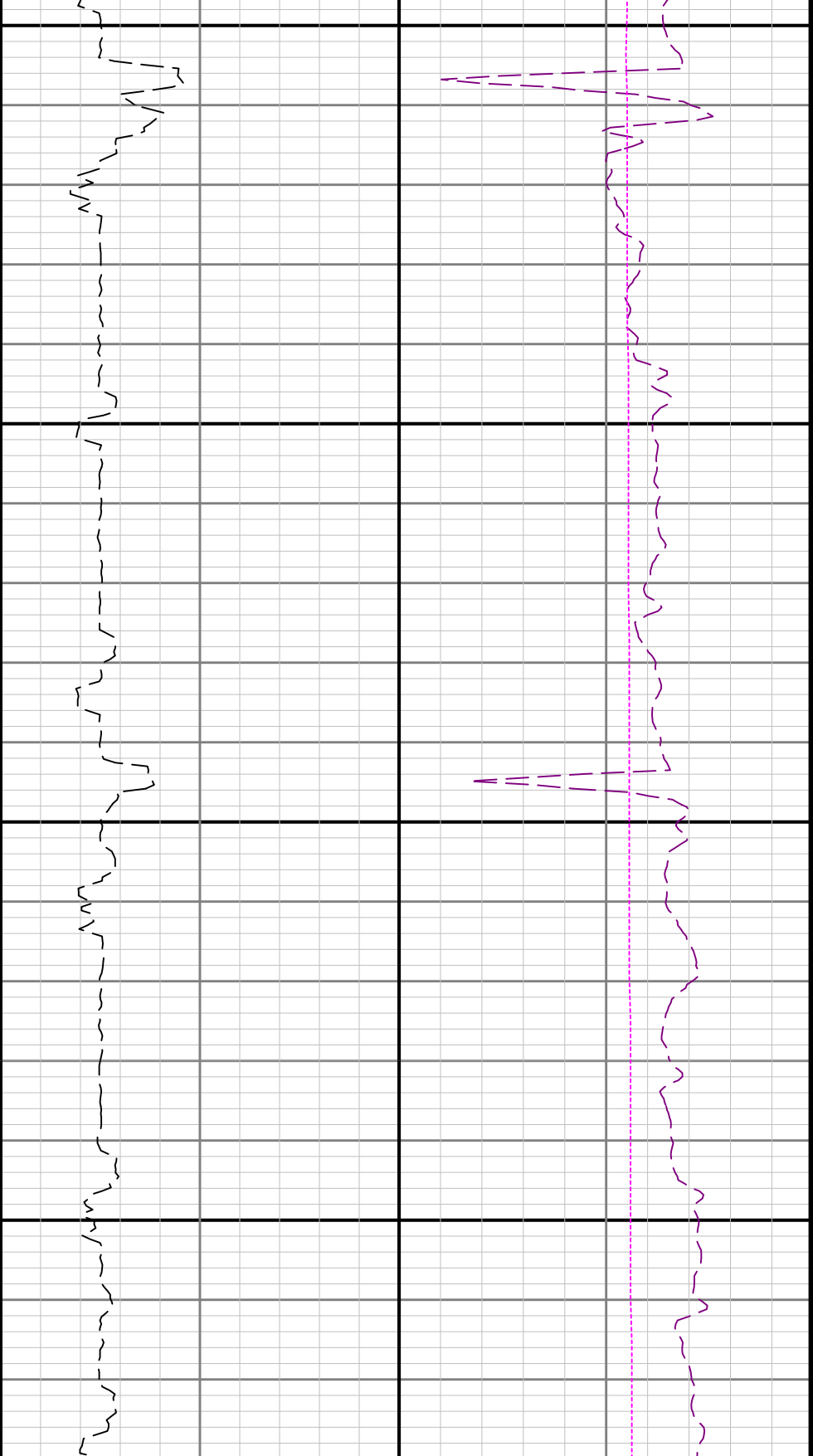
5200





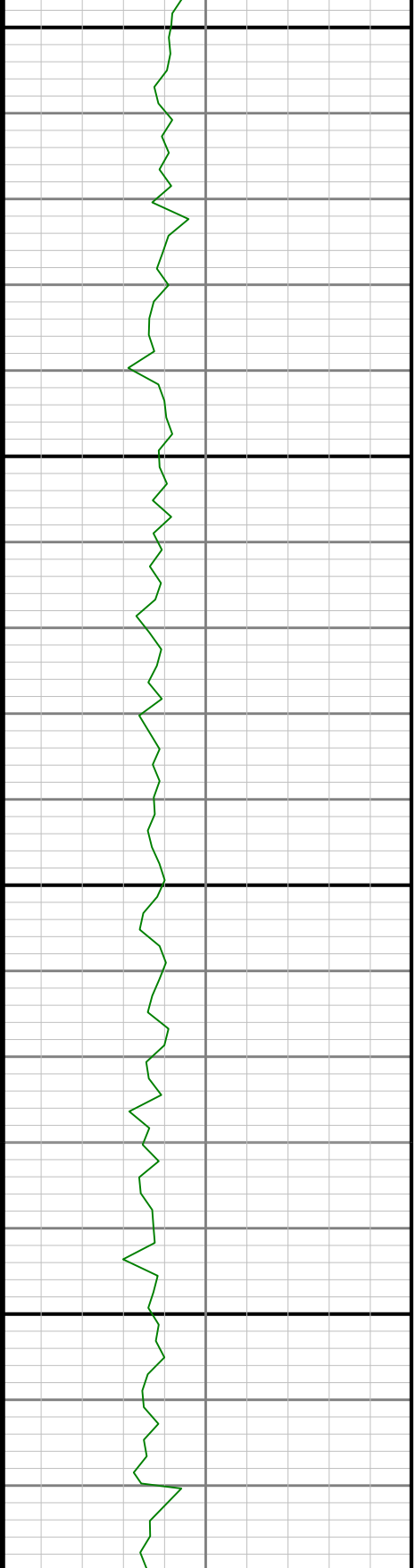
5300

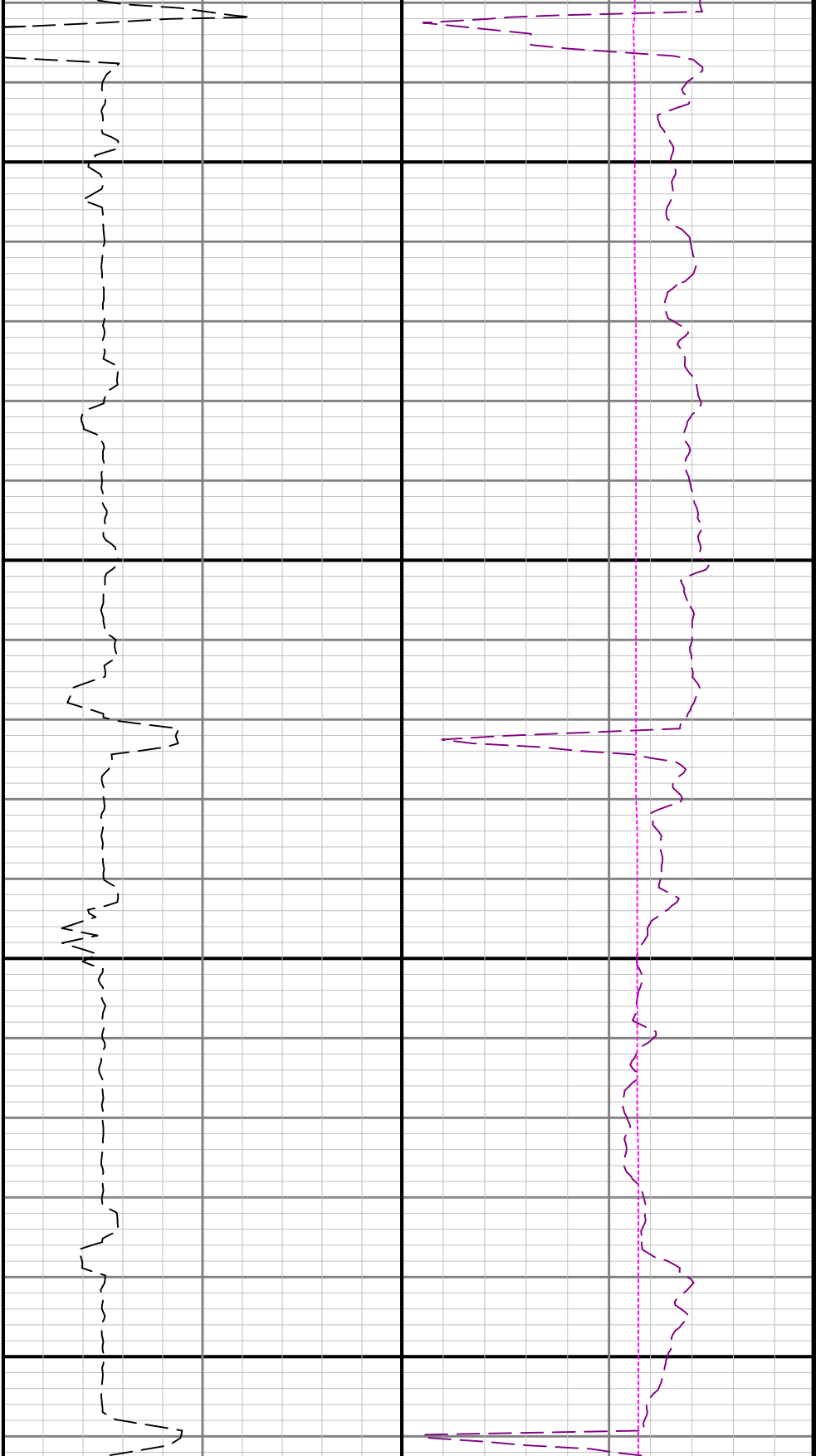




5400

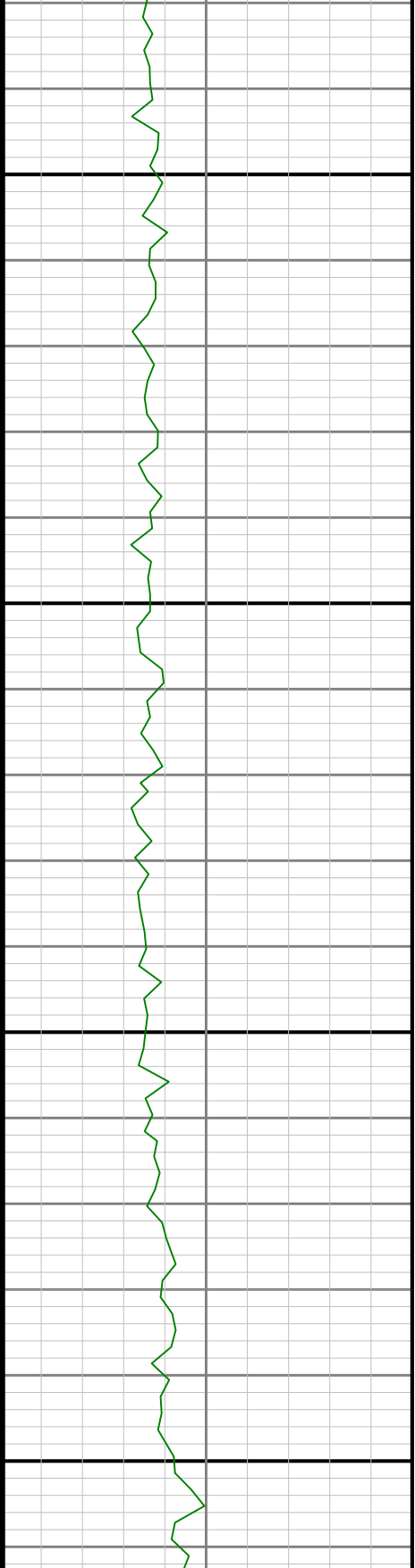
5500

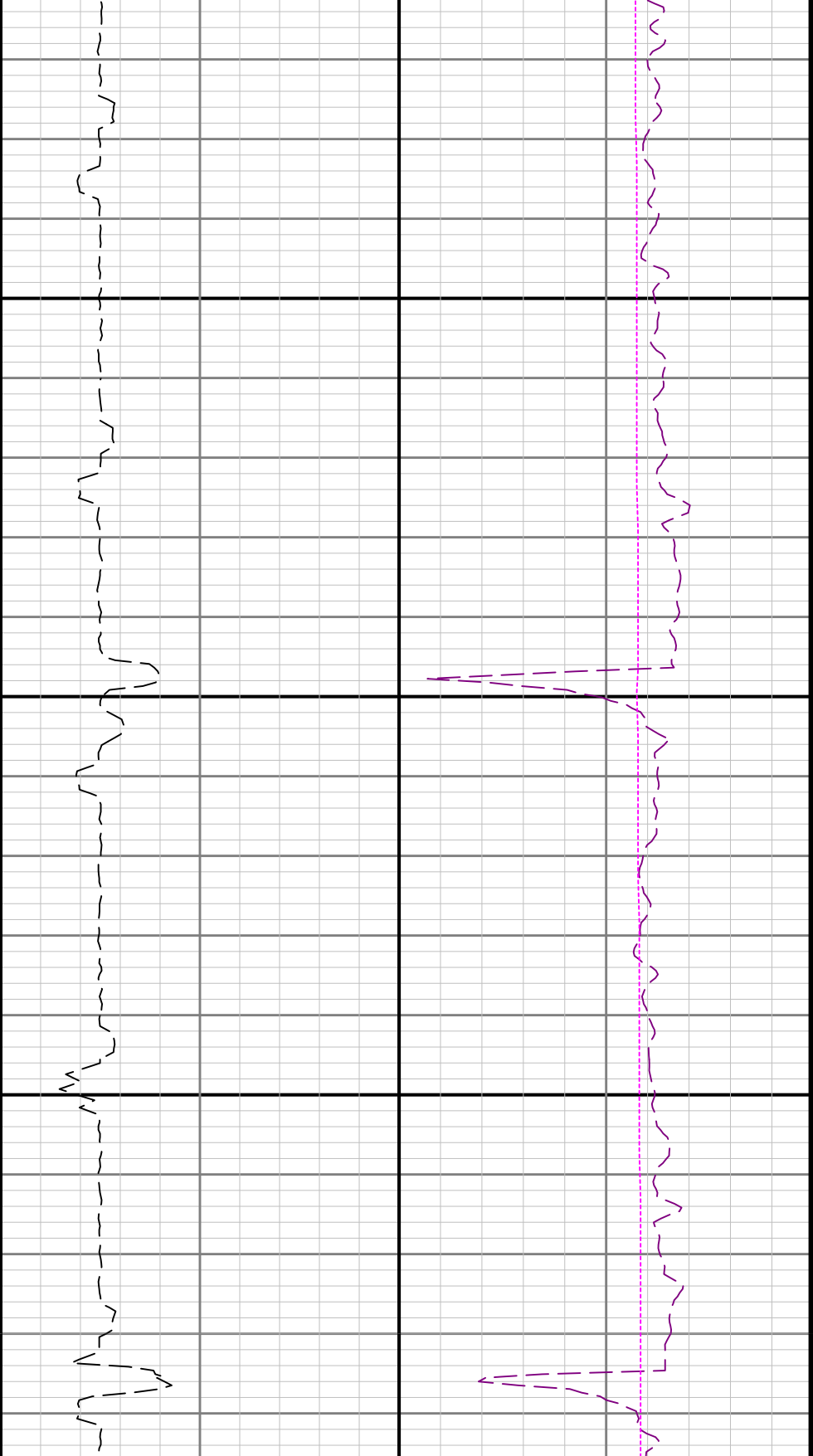




5600

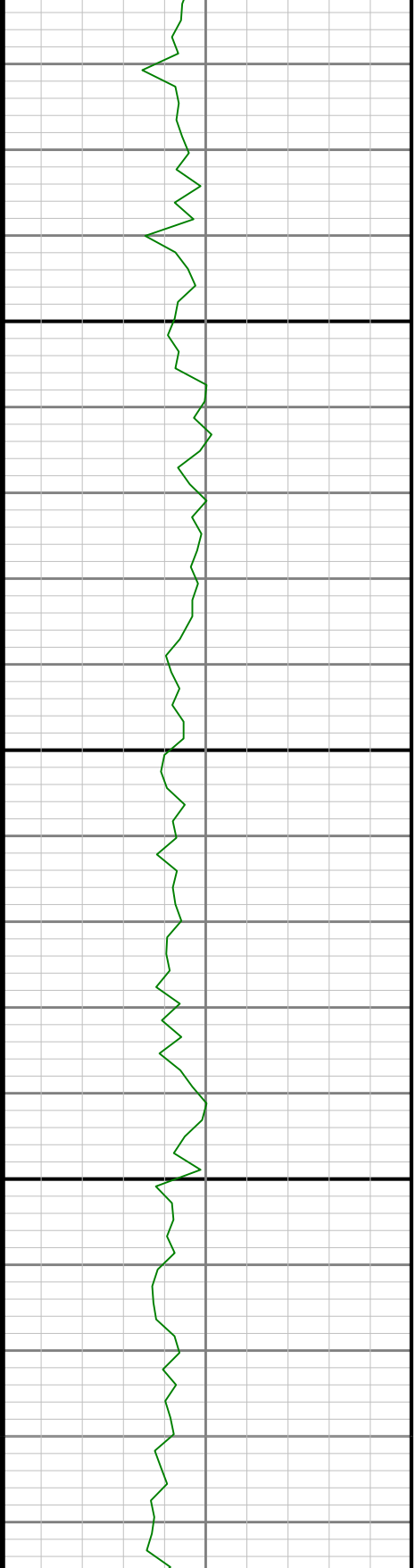
5700

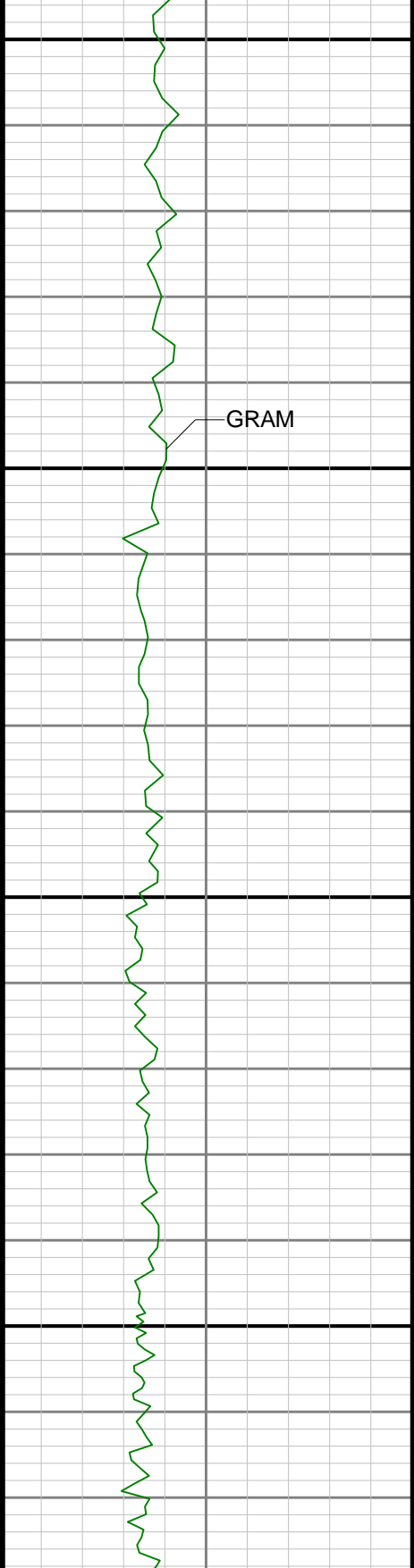




5800

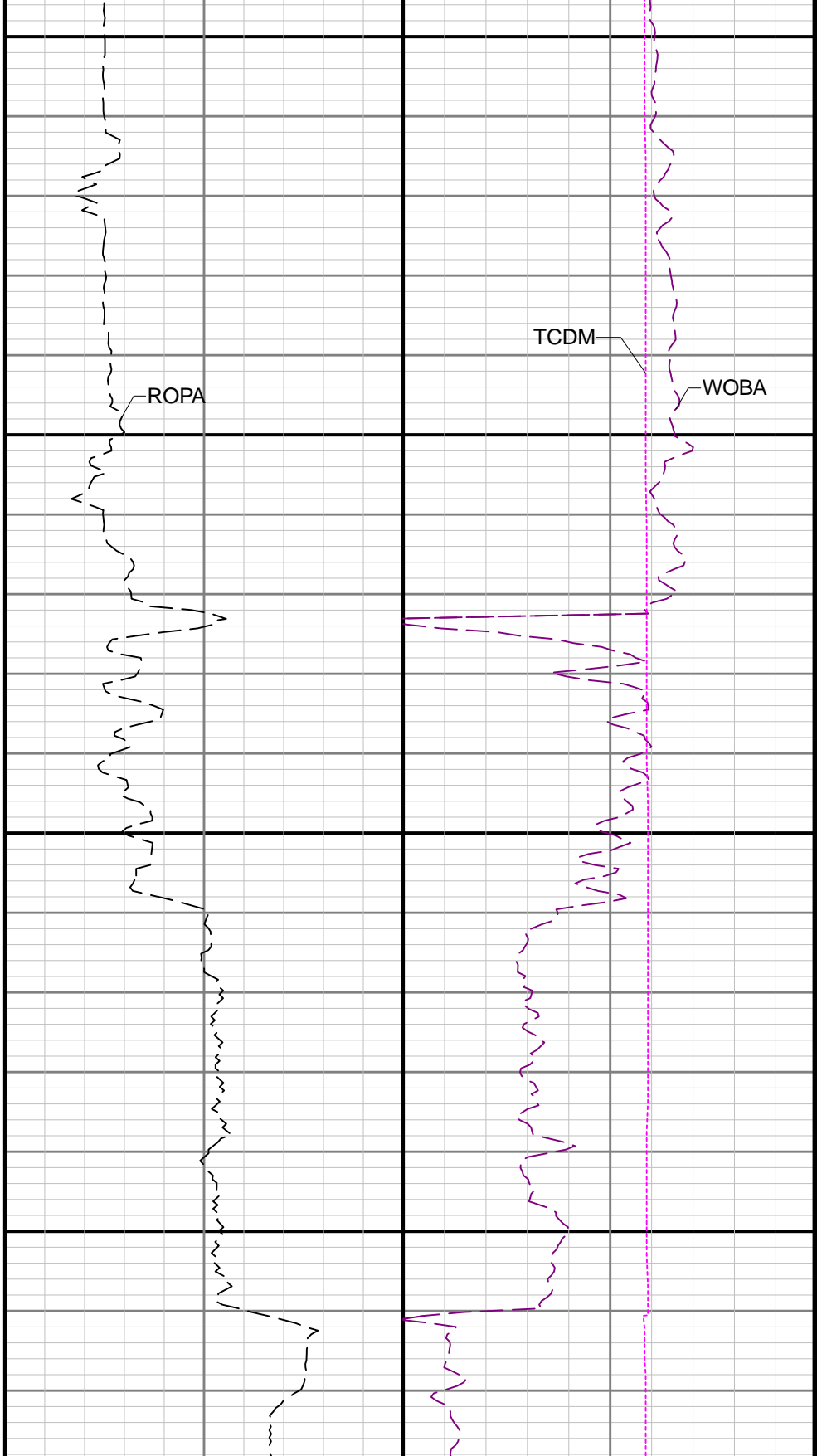
5900

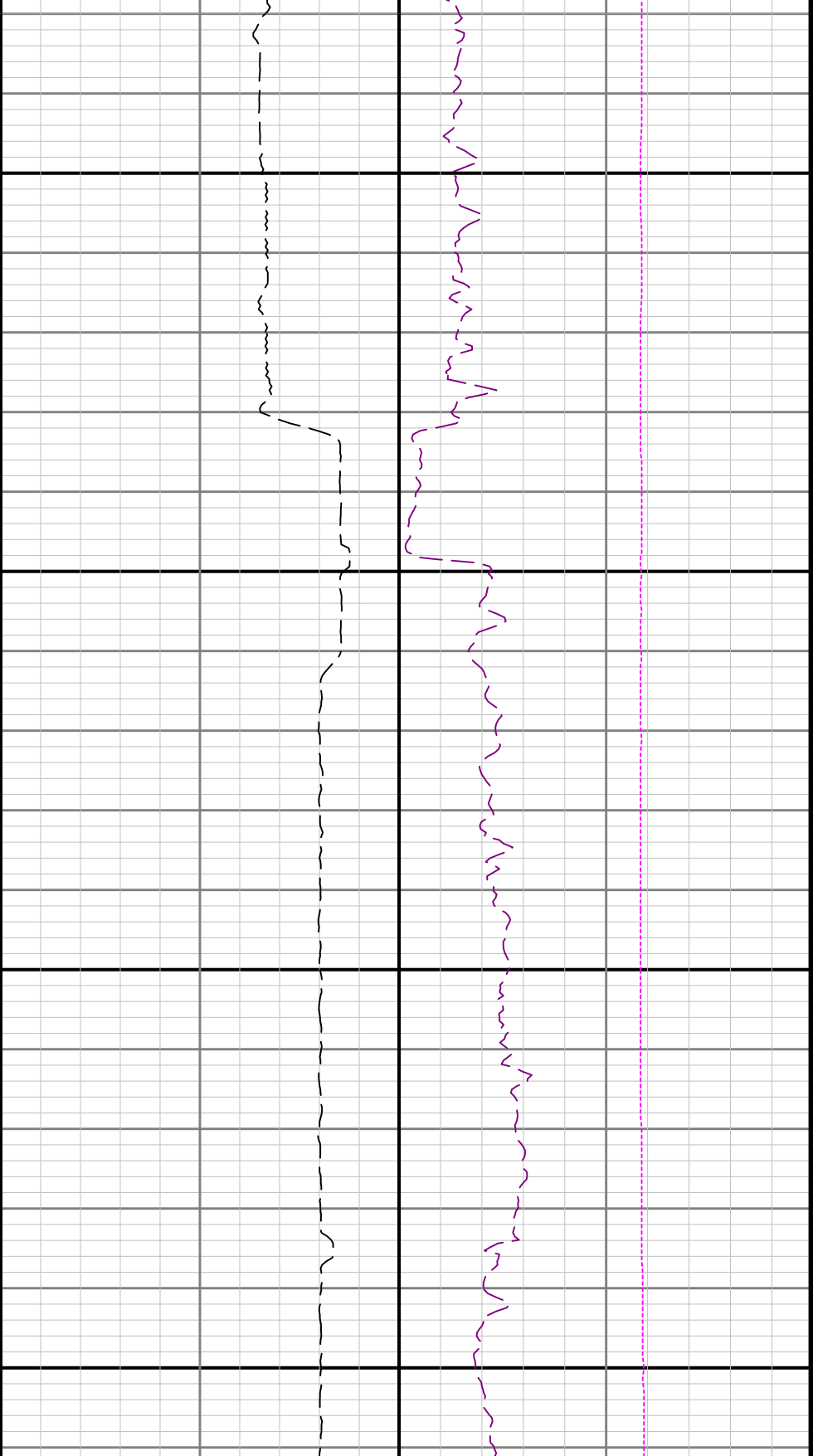




6000

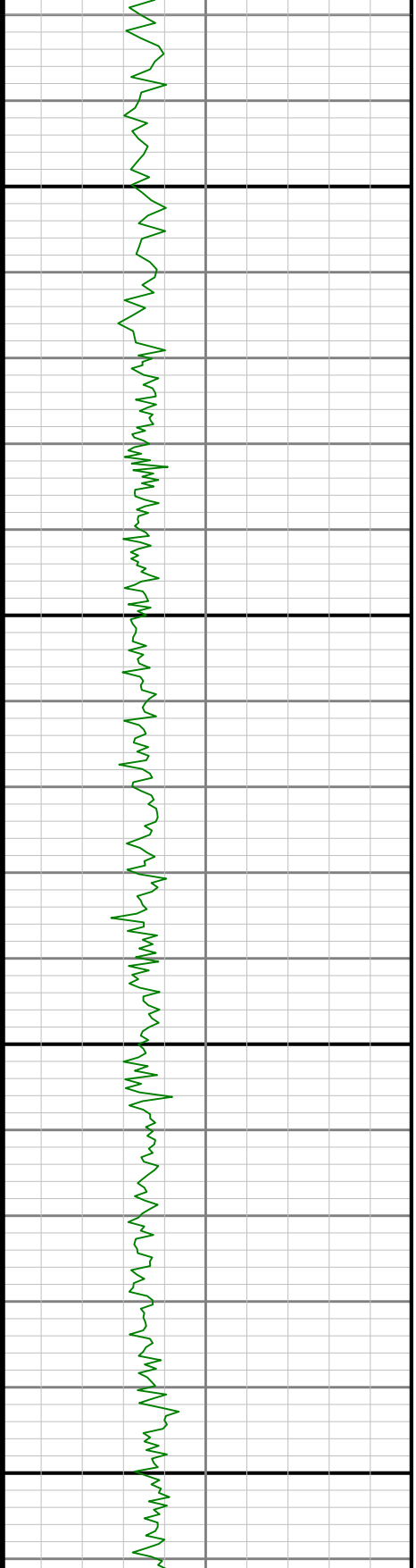
6100

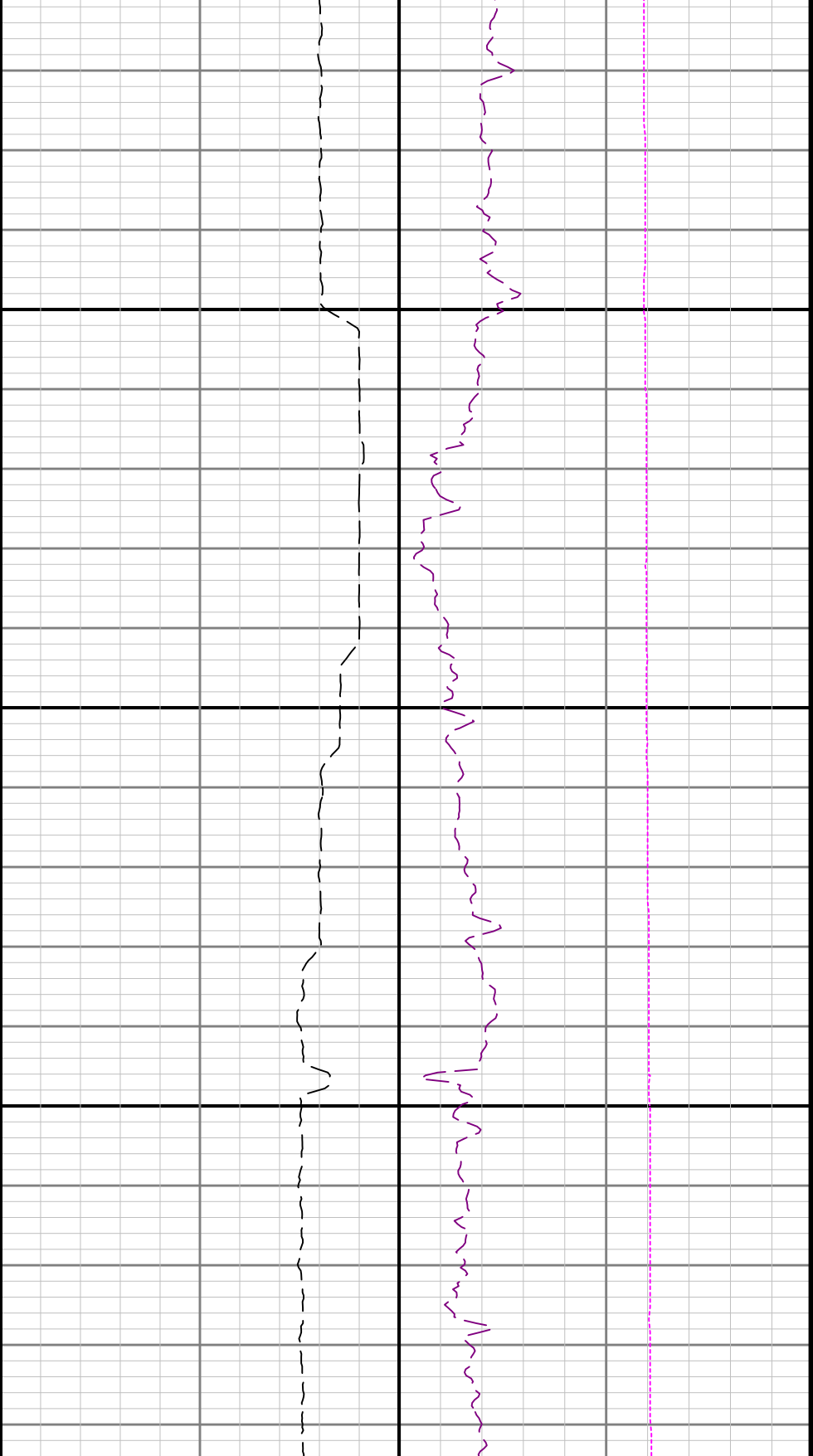




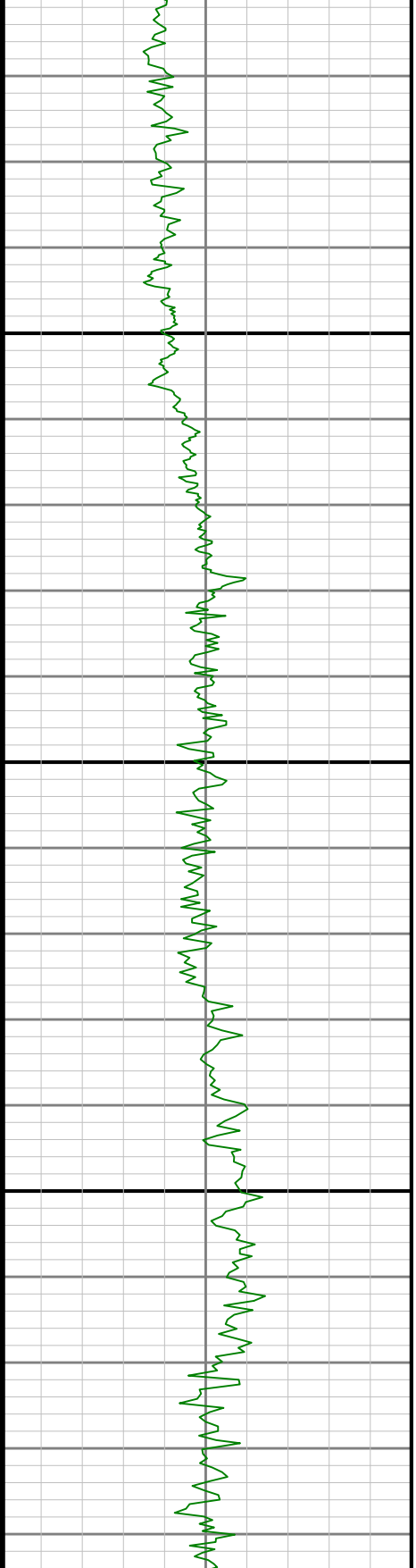
6200

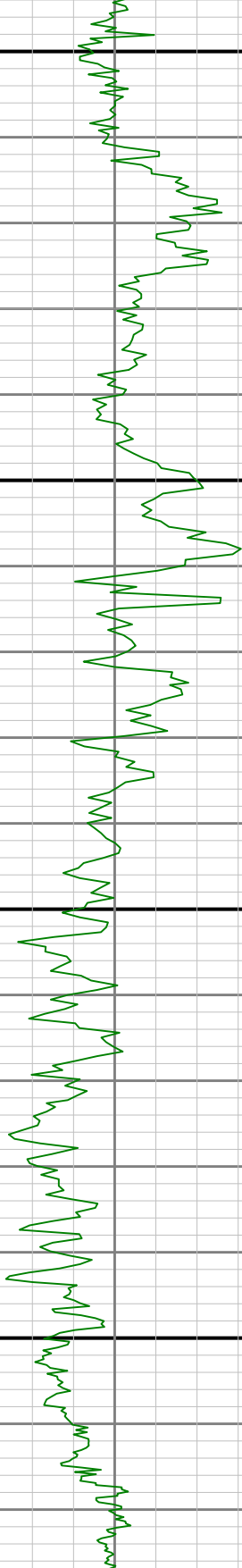
6300





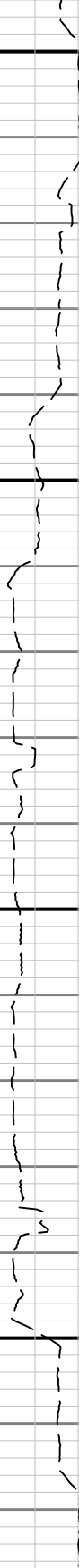
6400





6500

0099



		993.00	0.23	232.28	N/A	-1.22	-0.53	992.99	-3828.01	1.28	95.00	0.42	-0.37	-32.69
		1088.00	0.42	223.03	N/A	-1.59	-0.92	1087.99	-3733.01	1.70	95.00	0.21	0.20	-9.74
		1182.00	0.21	258.42	N/A	-1.88	-1.32	1181.98	-3639.02	2.04	94.00	0.29	-0.22	37.65
		1277.00	0.10	247.54	N/A	-1.95	-1.57	1276.98	-3544.02	2.14	95.00	0.12	-0.12	-11.45
		1372.00	0.36	265.58	N/A	-2.00	-1.95	1371.98	-3449.02	2.24	95.00	0.28	0.27	18.99
		1466.00	0.42	294.42	N/A	-1.88	-2.55	1465.98	-3355.02	2.21	94.00	0.22	0.06	30.68
		1561.00	0.41	308.11	N/A	-1.53	-3.14	1560.98	-3260.02	1.94	95.00	0.10	-0.01	14.41
		1656.00	0.30	261.02	N/A	-1.36	-3.65	1655.98	-3165.02	1.84	95.00	0.32	-0.12	-49.57
		1751.00	0.40	319.89	N/A	-1.14	-4.11	1750.98	-3070.02	1.68	95.00	0.37	0.11	61.97
		1846.00	0.17	355.60	N/A	-0.75	-4.33	1845.97	-2975.03	1.32	95.00	0.29	-0.24	37.59
		1922.00	0.20	8.90	N/A	-0.50	-4.32	1921.97	-2899.03	1.08	76.00	0.07	0.04	17.50
		1990.00	0.06	355.74	117.6	-0.35	-4.31	1989.97	-2831.03	0.93	68.00	0.21	-0.21	-19.35
		2085.00	0.09	141.63	117.6	-0.36	-4.26	2084.97	-2736.03	0.93	95.00	0.15	0.03	153.57
		2179.00	1.60	257.61	123.0	-0.70	-5.50	2178.96	-2642.04	1.43	94.00	1.75	1.61	123.38
		2274.00	3.54	257.94	123.0	-1.60	-9.66	2273.86	-2547.14	2.88	95.00	2.04	2.04	0.35
		2368.00	4.97	258.42	123.0	-3.02	-16.49	2367.60	-2453.40	5.21	94.00	1.52	1.52	0.51
		2463.00	5.83	256.66	125.7	-4.96	-25.22	2462.18	-2358.82	8.31	95.00	0.92	0.91	-1.85
		2558.00	6.88	257.34	125.7	-7.32	-35.46	2556.59	-2264.41	12.02	95.00	1.11	1.11	0.72
		2652.00	7.67	258.37	128.4	-9.82	-47.10	2649.84	-2171.16	16.07	94.00	0.85	0.84	1.10
		2747.00	9.58	258.42	128.4	-12.68	-61.06	2743.76	-2077.24	20.78	95.00	2.01	2.01	0.05
		2842.00	12.75	258.04	131.1	-16.44	-79.06	2836.95	-1984.05	26.93	95.00	3.34	3.34	-0.40
		2936.00	15.06	259.01	131.1	-20.92	-101.20	2928.19	-1892.81	34.34	94.00	2.47	2.46	1.03
		3031.00	17.33	258.15	131.1	-26.18	-127.17	3019.41	-1801.59	43.05	95.00	2.40	2.39	-0.91
		3126.00	18.49	258.25	133.8	-32.16	-155.76	3109.80	-1711.20	52.81	95.00	1.22	1.22	0.11
		3221.00	22.28	259.67	133.8	-38.45	-188.24	3198.84	-1622.16	63.42	95.00	4.02	3.99	1.49
		3315.00	22.09	260.05	136.5	-44.70	-223.18	3285.88	-1535.12	74.32	94.00	0.25	-0.20	0.40
		3410.00	22.58	258.79	136.5	-51.34	-258.67	3373.75	-1447.25	85.66	95.00	0.72	0.52	-1.33
		3505.00	22.85	259.63	139.2	-58.20	-294.70	3461.39	-1359.61	97.31	95.00	0.44	0.28	0.88
		3599.00	22.70	259.48	139.2	-64.80	-330.49	3548.06	-1272.94	108.66	94.00	0.17	-0.16	-0.16
		3694.00	22.95	259.64	139.2	-71.48	-366.73	3635.62	-1185.38	120.15	95.00	0.27	0.26	0.17
		3789.00	22.87	258.89	141.9	-78.36	-403.06	3723.12	-1097.88	131.87	95.00	0.32	-0.08	-0.79
		3884.00	23.08	258.76	141.9	-85.55	-439.44	3810.59	-1010.41	143.88	95.00	0.23	0.22	-0.14
		3978.00	23.17	259.33	144.6	-92.57	-475.69	3897.04	-923.96	155.71	94.00	0.26	0.10	0.61
		4073.00	22.94	258.62	144.6	-99.68	-512.20	3984.45	-836.55	167.67	95.00	0.38	-0.24	-0.75
		4168.00	23.07	258.81	147.3	-106.95	-548.61	4071.89	-749.11	179.76	95.00	0.16	0.14	0.20
		4263.00	22.52	260.04	150.0	-113.70	-584.79	4159.47	-661.53	191.33	95.00	0.77	-0.58	1.29
		4357.00	22.44	260.01	150.0	-119.93	-620.19	4246.33	-574.67	202.26	94.00	0.09	-0.09	-0.03
		4452.00	22.54	259.10	150.0	-126.52	-655.92	4334.11	-486.89	213.59	95.00	0.38	0.11	-0.96
		4546.00	22.45	258.97	150.0	-133.36	-691.23	4420.95	-400.05	225.12	94.00	0.11	-0.10	-0.14
		4641.00	22.44	258.96	152.7	-140.30	-726.83	4508.76	-312.24	236.79	95.00	0.01	-0.01	-0.01
		4736.00	22.26	259.21	152.7	-147.14	-762.30	4596.62	-224.38	248.34	95.00	0.21	-0.19	0.26
		4830.00	22.41	259.53	152.7	-153.73	-797.41	4683.57	-137.43	259.59	94.00	0.21	0.16	0.34
		4925.00	21.89	259.08	155.4	-160.38	-832.61	4771.56	-49.44	270.91	95.00	0.58	-0.55	-0.47
		5020.00	21.85	258.53	158.1	-167.25	-867.32	4859.72	38.72	282.39	95.00	0.22	-0.04	-0.58
		5114.00	22.10	258.84	158.1	-174.15	-901.81	4946.89	125.89	293.86	94.00	0.29	0.27	0.33
		5209.00	21.72	260.17	160.8	-180.61	-936.67	5035.03	214.03	304.95	95.00	0.66	-0.40	1.40
		5304.00	21.54	259.69	160.8	-186.73	-971.15	5123.34	302.34	315.66	95.00	0.27	-0.19	-0.51
		5398.00	20.92	260.50	160.8	-192.59	-1004.68	5210.96	389.96	325.97	94.00	0.73	-0.66	0.86
		5493.00	22.11	260.16	163.5	-198.44	-1039.02	5299.34	478.34	336.39	95.00	1.26	1.25	-0.36
		5588.00	22.16	260.32	163.5	-204.51	-1074.30	5387.34	566.34	347.15	95.00	0.08	0.05	0.17
		5683.00	21.90	260.72	166.2	-210.38	-1109.44	5475.40	654.40	357.70	95.00	0.32	-0.27	0.42
		5777.00	22.03	261.26	166.2	-215.89	-1144.17	5562.58	741.58	367.82	94.00	0.26	0.14	0.57
		5872.00	21.80	261.36	168.9	-221.24	-1179.22	5650.71	829.71	377.84	95.00	0.25	-0.24	0.11
		5967.00	21.96	262.34	171.6	-226.26	-1214.26	5738.87	917.87	387.53	95.00	0.42	0.17	1.03
		6061.00	22.17	261.53	171.6	-231.22	-1249.23	5825.99	1004.99	397.14	94.00	0.39	0.22	-0.86
		6156.00	21.55	262.32	174.3	-236.19	-1284.25	5914.15	1093.15	406.78	95.00	0.72	-0.65	0.83
		6251.00	21.71	261.79	174.3	-241.03	-1318.93	6002.46	1181.46	416.24	95.00	0.27	0.17	-0.56
		6345.00	21.90	261.18	177.0	-246.20	-1353.46	6089.74	1268.74	426.01	94.00	0.31	0.20	-0.65
		6440.00	22.56	249.90	177.0	-255.18	-1388.10	6177.72	1356.72	439.57	95.00	4.54	0.69	-11.87
		6534.00	25.34	236.37	174.3	-272.54	-1421.81	6263.68	1442.68	461.30	94.00	6.53	2.96	-14.39
		6629.00	29.64	224.04	179.7	-300.72	-1455.11	6348.00	1527.00	493.71	95.00	7.49	4.53	-12.98

	6724.00	35.68	209.74	179.7	-341.76	-1485.26	6428.07	1607.07	538.43	95.00	10.28	6.36	-15.05
	6819.00	41.46	197.41	182.5	-395.95	-1508.46	6502.42	1681.42	595.25	95.00	10.10	6.08	-12.98
	6913.00	50.32	193.27	182.5	-461.00	-1526.12	6567.80	1746.80	662.08	94.00	9.94	9.43	-4.40
	7008.00	56.80	184.82	185.2	-536.35	-1537.87	6624.26	1803.26	738.33	95.00	9.88	6.82	-8.89
	7103.00	63.74	181.00	187.9	-618.67	-1541.96	6671.36	1850.36	820.45	95.00	8.09	7.31	-4.02
	7198.00	72.05	183.38	187.9	-706.54	-1545.38	6707.08	1886.08	907.98	95.00	9.05	8.75	2.51
	7292.00	82.72	183.42	187.9	-797.97	-1550.81	6727.58	1906.58	999.31	94.00	11.35	11.35	0.04
	7387.00	90.89	182.66	190.6	-892.61	-1555.83	6732.87	1911.87	1093.77	95.00	8.64	8.60	-0.80
	7482.00	90.77	181.04	196.0	-987.55	-1558.90	6731.49	1910.49	1188.26	95.00	1.71	-0.13	-1.71
	7576.00	91.05	179.26	201.4	-1081.53	-1559.15	6730.00	1909.00	1281.42	94.00	1.92	0.30	-1.89
	7671.00	90.77	179.65	277.1	-1176.52	-1558.24	6728.49	1907.49	1375.42	95.00	0.51	-0.29	0.41
	7766.00	91.17	179.22	204.1	-1271.50	-1557.31	6726.88	1905.88	1469.41	95.00	0.62	0.42	-0.45
	7955.00	90.18	179.69	209.5	-1460.47	-1555.51	6724.66	1903.66	1656.43	189.00	0.58	-0.52	0.25
	8050.00	90.25	179.59	209.5	-1555.47	-1554.91	6724.30	1903.30	1750.48	95.00	0.13	0.07	-0.11
	8145.00	90.22	179.87	212.2	-1650.47	-1554.46	6723.91	1902.91	1844.55	95.00	0.30	-0.03	0.29
	8240.00	89.97	179.90	212.2	-1745.47	-1554.27	6723.75	1902.75	1938.67	95.00	0.27	-0.26	0.03
	8334.00	90.03	179.95	212.2	-1839.47	-1554.15	6723.75	1902.75	2031.79	94.00	0.08	0.06	0.05
	8524.00	90.12	179.42	214.9	-2029.47	-1553.11	6723.51	1902.51	2219.92	190.00	0.28	0.05	-0.28
	8618.00	90.80	179.23	212.2	-2123.46	-1552.00	6722.75	1901.75	2312.91	94.00	0.75	0.72	-0.20
	8713.00	90.09	179.51	214.9	-2218.45	-1550.95	6722.01	1901.01	2406.90	95.00	0.80	-0.75	0.29
	8808.00	90.12	179.35	217.6	-2313.44	-1550.01	6721.84	1900.84	2500.90	95.00	0.17	0.03	-0.17
	8997.00	89.91	179.02	217.6	-2502.42	-1547.32	6721.79	1900.79	2687.80	189.00	0.21	-0.11	-0.17
	9092.00	90.18	179.74	220.3	-2597.42	-1546.29	6721.72	1900.72	2781.80	95.00	0.81	0.28	0.76
	9187.00	89.78	179.16	220.3	-2692.41	-1545.38	6721.75	1900.75	2875.81	95.00	0.74	-0.42	-0.61
	9281.00	90.15	179.25	223.0	-2786.40	-1544.08	6721.81	1900.81	2968.77	94.00	0.41	0.39	0.10
	9376.00	90.40	179.64	223.0	-2881.40	-1543.16	6721.35	1900.35	3062.77	95.00	0.49	0.26	0.41
	9471.00	90.71	179.77	223.0	-2976.39	-1542.67	6720.43	1899.43	3156.84	95.00	0.35	0.33	0.14
	9565.00	90.65	179.53	223.0	-3070.38	-1542.09	6719.31	1898.31	3249.90	94.00	0.26	-0.06	-0.26
	9660.00	89.57	179.91	225.7	-3165.38	-1541.63	6719.13	1898.13	3343.97	95.00	1.21	-1.14	0.40
	9754.00	90.15	179.15	225.7	-3259.37	-1540.86	6719.36	1898.36	3437.01	94.00	1.02	0.62	-0.81
	9849.00	90.03	180.07	228.4	-3354.37	-1540.21	6719.21	1898.21	3531.05	95.00	0.98	-0.13	0.97
	9944.00	89.45	179.44	228.4	-3449.37	-1539.80	6719.64	1898.64	3625.13	95.00	0.90	-0.61	-0.66
	10038.00	90.31	179.82	228.4	-3543.36	-1539.20	6719.84	1898.84	3718.19	94.00	1.00	0.91	0.40
	10133.00	89.91	179.51	231.1	-3638.36	-1538.64	6719.66	1898.66	3812.25	95.00	0.53	-0.42	-0.33
	10228.00	90.00	180.24	231.1	-3733.36	-1538.44	6719.73	1898.73	3906.36	95.00	0.77	0.09	0.77
	10322.00	90.12	178.63	231.1	-3827.35	-1537.51	6719.63	1898.63	3999.38	94.00	1.72	0.13	-1.71
	10417.00	90.12	179.14	233.8	-3922.33	-1535.66	6719.44	1898.44	4093.25	95.00	0.54	0.00	0.54
	10511.00	90.15	178.79	309.5	-4016.32	-1533.96	6719.21	1898.21	4186.15	94.00	0.37	0.03	-0.37
	10606.00	90.25	181.50	233.8	-4111.31	-1534.20	6718.88	1897.88	4280.31	95.00	2.85	0.11	2.85
	10701.00	90.18	181.67	236.5	-4206.27	-1536.83	6718.53	1897.53	4374.76	95.00	0.19	-0.07	0.18
	10796.00	90.28	182.80	236.5	-4301.20	-1540.53	6718.14	1897.14	4469.32	95.00	1.19	0.11	1.19
	10890.00	90.12	180.31	236.5	-4395.15	-1543.09	6717.82	1896.82	4562.77	94.00	2.65	-0.17	-2.65
	10985.00	90.22	180.27	239.2	-4490.15	-1543.57	6717.53	1896.53	4656.97	95.00	0.11	0.11	-0.04
	11080.00	90.31	178.33	239.2	-4585.14	-1542.41	6717.09	1896.09	4750.94	95.00	2.04	0.09	-2.04
	11174.00	90.03	181.03	239.2	-4679.13	-1541.88	6716.82	1895.82	4844.00	94.00	2.89	-0.30	2.87
	11269.00	90.22	177.60	239.2	-4774.11	-1540.74	6716.61	1895.61	4937.96	95.00	3.62	0.20	-3.61
	11364.00	90.40	178.42	241.9	-4869.05	-1537.45	6716.09	1895.09	5031.60	95.00	0.88	0.19	0.86
	11458.00	89.91	177.57	239.2	-4962.99	-1534.16	6715.84	1894.84	5124.24	94.00	1.04	-0.52	-0.90
	11553.00	90.12	178.80	241.9	-5057.94	-1531.15	6715.82	1894.82	5217.93	95.00	1.31	0.22	1.29
	11648.00	89.97	177.56	239.2	-5152.89	-1528.13	6715.74	1894.74	5311.61	95.00	1.31	-0.16	-1.31
	11742.00	90.89	179.17	241.9	-5246.85	-1525.45	6715.04	1894.04	5404.35	94.00	1.97	0.98	1.71
	11837.00	89.75	177.86	241.9	-5341.81	-1522.99	6714.50	1893.50	5498.12	95.00	1.83	-1.20	-1.38
	11931.00	89.85	177.99	244.6	-5435.75	-1519.58	6714.83	1893.83	5590.74	94.00	0.17	0.11	0.14
	12026.00	89.82	179.43	244.6	-5530.72	-1517.45	6715.11	1894.11	5684.57	95.00	1.52	-0.03	1.52
	12121.00	89.75	180.50	244.6	-5625.72	-1517.39	6715.46	1894.46	5778.69	95.00	1.13	-0.07	1.13
	12215.00	89.66	180.04	244.6	-5719.71	-1517.83	6715.95	1894.95	5871.90	94.00	0.50	-0.10	-0.49
	12310.00	90.46	181.13	247.3	-5814.71	-1518.80	6715.85	1894.85	5966.16	95.00	1.42	0.84	1.15
	12404.00	90.49	179.45	247.3	-5908.70	-1519.28	6715.07	1894.07	6059.36	94.00	1.79	0.03	-1.79
	12499.00	90.62	180.60	247.3	-6003.69	-1519.32	6714.15	1893.15	6153.49	95.00	1.22	0.14	1.21
	12594.00	90.58	179.96	247.3	-6098.69	-1519.78	6713.15	1892.15	6247.69	95.00	0.67	-0.04	-0.67
	12689.00	90.37	179.95	250.0	-6193.68	-1519.71	6712.37	1891.37	6341.81	95.00	0.22	-0.22	-0.01

	12783.00	91.69	180.89	250.0	-6287.66	-1520.40	6710.68	1889.68	6435.03	94.00	1.72	1.40	1.00
	12878.00	89.94	180.24	250.0	-6382.64	-1521.33	6709.32	1888.32	6529.27	95.00	1.97	-1.84	-0.68
	12973.00	90.40	179.69	250.0	-6477.64	-1521.27	6709.04	1888.04	6623.40	95.00	0.75	0.48	-0.58
	13067.00	89.35	180.03	250.0	-6571.64	-1521.04	6709.25	1888.25	6716.51	94.00	1.17	-1.12	0.36
	13162.00	89.72	179.43	250.0	-6666.64	-1520.60	6710.02	1889.02	6810.58	95.00	0.74	0.39	-0.63
	13257.00	90.65	180.51	250.0	-6761.63	-1520.55	6709.71	1888.71	6904.71	95.00	1.50	0.98	1.14
	13352.00	90.22	180.12	252.7	-6856.63	-1521.07	6708.99	1887.99	6998.91	95.00	0.61	-0.45	-0.41
	13446.00	89.72	179.05	252.7	-6950.62	-1520.39	6709.04	1888.04	7091.96	94.00	1.26	-0.53	-1.14
	13541.00	89.88	179.72	252.7	-7045.62	-1519.37	6709.37	1888.37	7185.96	95.00	0.73	0.17	0.71
	13635.00	89.82	180.09	250.0	-7139.62	-1519.21	6709.62	1888.62	7279.08	94.00	0.40	-0.06	0.39
	13730.00	89.63	179.71	252.7	-7234.62	-1519.05	6710.07	1889.07	7373.19	95.00	0.45	-0.20	-0.40
	13824.00	90.28	179.95	252.7	-7328.62	-1518.77	6710.15	1889.15	7466.30	94.00	0.74	0.69	0.26
	13919.00	89.63	179.10	252.7	-7423.61	-1517.98	6710.22	1889.22	7560.33	95.00	1.13	-0.68	-0.89
	14014.00	90.86	181.06	255.4	-7518.60	-1518.11	6709.82	1888.82	7654.47	95.00	2.44	1.29	2.06
	14108.00	90.06	179.99	252.7	-7612.59	-1518.97	6709.06	1888.06	7747.73	94.00	1.42	-0.85	-1.14
	14202.00	90.49	179.89	252.7	-7706.59	-1518.88	6708.61	1887.61	7840.86	94.00	0.47	0.46	-0.11
	14297.00	91.85	180.72	255.4	-7801.57	-1519.38	6706.67	1885.67	7935.04	95.00	1.68	1.43	0.87
	14391.00	91.02	179.61	255.4	-7895.54	-1519.65	6704.32	1883.32	8028.19	94.00	1.47	-0.88	-1.18
	14486.00	90.15	180.68	255.4	-7990.53	-1519.89	6703.35	1882.35	8122.35	95.00	1.45	-0.92	1.13
	14580.00	90.65	179.64	255.4	-8084.52	-1520.16	6702.69	1881.69	8215.53	94.00	1.23	0.53	-1.11
	14675.00	90.55	178.99	258.1	-8179.51	-1519.02	6701.69	1880.69	8309.50	95.00	0.69	-0.11	-0.68
	14769.00	90.83	179.73	258.1	-8273.50	-1517.97	6700.56	1879.56	8402.49	94.00	0.84	0.30	0.79
	14864.00	91.01	180.71	260.8	-8368.48	-1518.33	6699.04	1878.04	8496.66	95.00	1.05	0.19	1.03
	14959.00	92.49	180.47	258.1	-8463.43	-1519.31	6696.14	1875.14	8590.88	95.00	1.58	1.56	-0.25
	15053.00	89.72	179.17	258.1	-8557.40	-1519.02	6694.32	1873.32	8683.96	94.00	3.26	-2.95	-1.38
	15148.00	90.40	181.21	260.8	-8652.40	-1519.33	6694.22	1873.22	8778.13	95.00	2.26	0.72	2.15
	15243.00	89.32	180.07	260.8	-8747.39	-1520.39	6694.46	1873.46	8872.40	95.00	1.65	-1.14	-1.20
	15337.00	91.08	180.86	260.8	-8841.38	-1521.16	6694.13	1873.13	8965.64	94.00	2.05	1.87	0.84
	15432.00	90.49	179.93	260.8	-8936.37	-1521.81	6692.83	1871.83	9059.85	95.00	1.16	-0.62	-0.98
	15527.00	90.03	179.98	263.5	-9031.37	-1521.74	6692.40	1871.40	9153.98	95.00	0.49	-0.48	0.05
	15622.00	90.65	181.17	263.5	-9126.36	-1522.69	6691.83	1870.83	9248.23	95.00	1.41	0.65	1.25
	15717.00	89.75	180.84	263.5	-9221.34	-1524.35	6691.50	1870.50	9342.58	95.00	1.01	-0.95	-0.35
	15811.00	90.12	180.23	263.5	-9315.34	-1525.23	6691.61	1870.61	9435.84	94.00	0.76	0.39	-0.65
	15906.00	90.71	180.30	263.5	-9410.33	-1525.67	6690.92	1869.92	9530.03	95.00	0.63	0.62	0.07
	16001.00	90.49	179.24	263.5	-9505.32	-1525.29	6689.92	1868.92	9624.11	95.00	1.14	-0.23	-1.12
	16096.00	89.69	180.56	258.1	-9600.32	-1525.12	6689.77	1868.77	9718.22	95.00	1.62	-0.84	1.39
	16190.00	90.25	179.02	260.8	-9694.32	-1524.78	6689.82	1868.82	9811.32	94.00	1.74	0.60	-1.64
	16285.00	90.22	178.76	263.5	-9789.30	-1522.94	6689.43	1868.43	9905.19	95.00	0.28	-0.03	-0.27
	16380.00	90.52	178.92	263.5	-9884.28	-1521.02	6688.82	1867.82	9999.04	95.00	0.36	0.32	0.17
	16474.00	90.00	178.88	263.5	-9978.26	-1519.21	6688.39	1867.39	10091.93	94.00	0.55	-0.55	-0.04
	16569.00	90.92	177.73	266.2	-10073.21	-1516.40	6687.63	1866.63	10185.64	95.00	1.55	0.97	-1.21
	16664.00	90.83	178.54	266.2	-10168.15	-1513.31	6686.18	1865.18	10279.30	95.00	0.86	-0.09	0.85
	16758.00	89.85	177.73	266.2	-10262.10	-1510.25	6685.62	1864.62	10371.98	94.00	1.35	-1.04	-0.86
	16853.00	90.65	178.38	266.2	-10357.04	-1507.03	6685.21	1864.21	10465.63	95.00	1.09	0.84	0.68
	16947.00	90.00	177.93	269.0	-10450.99	-1504.00	6684.68	1863.68	10558.31	94.00	0.84	-0.69	-0.48
	17042.00	90.09	177.78	258.1	-10545.92	-1500.45	6684.60	1863.60	10651.91	95.00	0.18	0.09	-0.16
	17136.00	90.00	179.03	263.5	-10639.88	-1497.83	6684.53	1863.53	10744.66	94.00	1.33	-0.10	1.33
	17231.00	90.15	178.26	263.5	-10734.86	-1495.58	6684.40	1863.40	10838.47	95.00	0.83	0.16	-0.81
	17326.00	89.94	178.84	266.2	-10829.82	-1493.18	6684.33	1863.33	10932.25	95.00	0.65	-0.22	0.61
	17420.00	89.75	179.16	266.2	-10923.81	-1491.54	6684.58	1863.58	11025.16	94.00	0.40	-0.20	0.34
	17456.00	89.97	179.01	263.5	-10959.81	-1490.96	6684.67	1863.67	11060.75	36.00	0.74	0.61	-0.42
Projection	17480.00	89.97	179.01	N/A	-10983.80	-1490.55	6684.68	1863.68	11084.48	24.00	0.00	0.00	-0.00