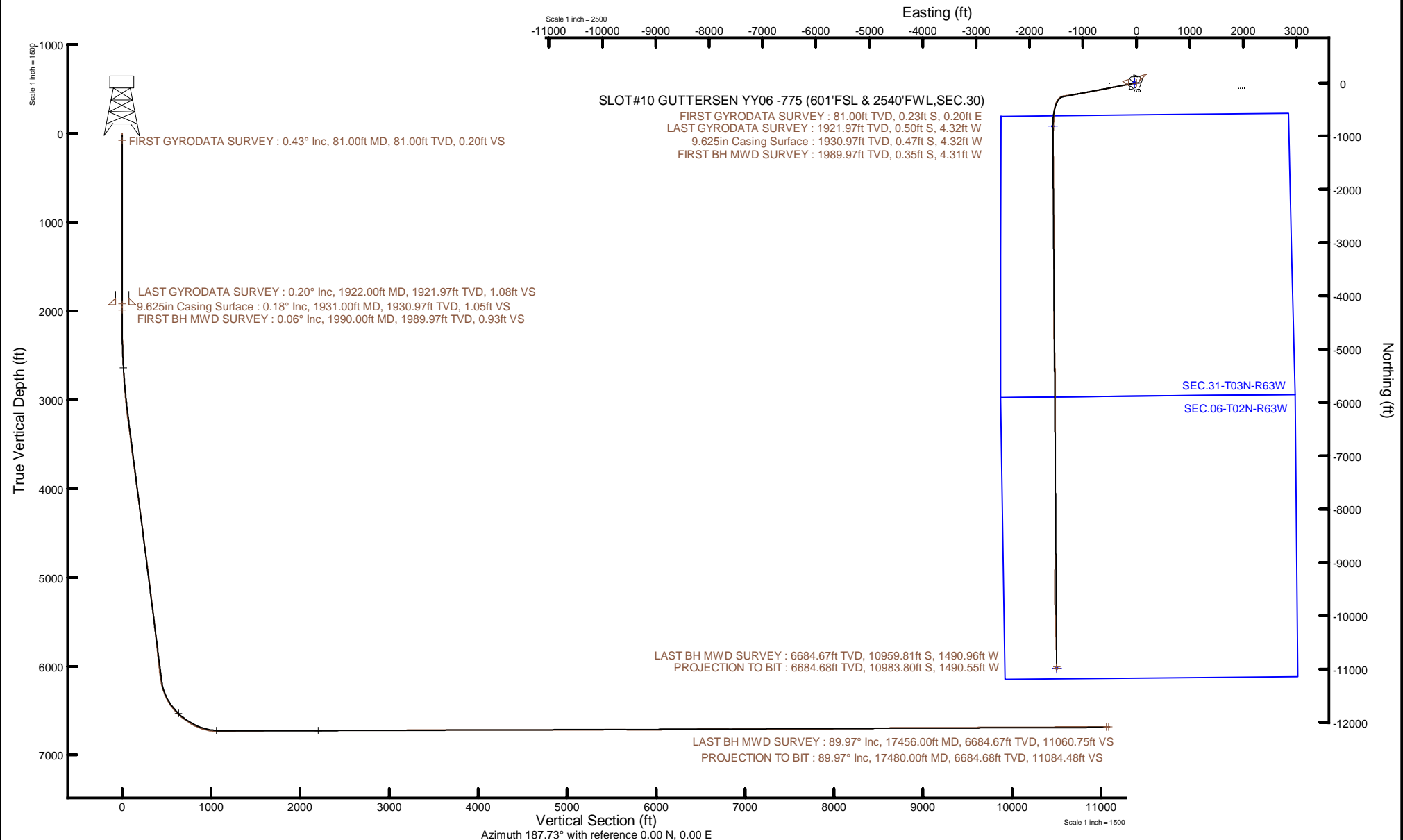


NOBLE ENERGY, INC

Location: COLORADO Slot: SLOT#10 GUTTERSEN YY06 -775 (601'FSL & 2540'FWL,SEC.30)
Field: WELD COUNTY (NOBLE NAD 83 GRID) Well: GUTTERSEN YY06 -775
Facility: SEC.30-T03N-R63W Wellbore: GUTTERSEN YY06 -775 PWB



Plot reference wellpath is GUTTERSEN YY06 -775 PWP Rev-A.0	Grid System: NAD83 / Lambert Colorado SP, Northern Zone (501), US feet
True vertical depths are referenced to RIG (30) (RKB)	North Reference: Grid north
Reference wellpath measured depths are referenced to RIG (30) (RKB)	Scale: True distance
RIG (30) (RKB) to Mean Sea Level: 4821 feet	Coordinates are in feet referenced to Slot
Mean Sea Level to Mud line (At Slot: SLOT#10 GUTTERSEN YY06 -775 (601'FSL & 2540'FWL,SEC.30)): 0 feet	Depths are in feet
Offset wellpath MDs are referenced to each path's default MD datum	Created by: painsetr on 2020-07-30; Database: WellArchitectDB





Actual Wellpath Report

GUTTERSEN YY06 -775 AWP

Page 1 of 10



REFERENCE WELLPATH IDENTIFICATION

Operator	NOBLE ENERGY, INC	Well	GUTTERSEN YY06 -775
Field	WELD COUNTY (NOBLE NAD 83 GRID)	API/Legal	
Facility	SEC.30-T03N-R63W	Wellbore	GUTTERSEN YY06 -775 AWB
Slot	SLOT#10 GUTTERSEN YY06 -775 (601'FSL & 2540'FWL,SEC.30)		

REPORT SETUP INFORMATION

Projection System	NAD83 / Lambert Colorado SP, Northern Zone (501), US feet	Software System	WellArchitect® 6.0
North Reference	Grid	User	Painsetr
Scale	0.999957	Report Generated	7/30/2020 at 7:01:15 AM
Convergence at slot	0.66° East	Database	WellArchitectDB

WELLPATH LOCATION

	Local coordinates		Grid coordinates		Geographic coordinates	
	North[ft]	East[ft]	Easting[US ft]	Northing[US ft]	Latitude	Longitude
Slot Location	149.18	36.74	3284598.26	1313985.26	40.1907983°	-104.4812624°
Facility Reference Pt			3284561.52	1313836.09	40.1903900°	-104.4814000°
Field Reference Pt			3000000.00	4454105.15	48.7761986°	-105.5000000°

WELLPATH DATUM

Calculation method	Minimum curvature	RIG (30') (RKB) to Facility Vertical Datum	4821.00ft
Horizontal Reference Pt	Slot	RIG (30') (RKB) to Mean Sea Level	4821.00ft
Vertical Reference Pt	RIG (30') (RKB)	RIG (30') (RKB) to Mud Line at Slot (SLOT#10 GUTTERSEN YY06 -775 (601'FSL & 2540'FWL,SEC.30))	4821.00ft
MD Reference Pt	RIG (30') (RKB)	Section Origin	N 0.00, E 0.00 ft
Field Vertical Reference	Mean Sea Level	Section Azimuth	187.73°

REFERENCE WELLPATH IDENTIFICATION

Operator	NOBLE ENERGY, INC	Well	GUTTERSEN YY06 -775
Field	WELD COUNTY (NOBLE NAD 83 GRID)	API/Legal	
Facility	SEC.30-T03N-R63W	Wellbore	GUTTERSEN YY06 -775 AWB
Slot	SLOT#10 GUTTERSEN YY06 -775 (601'FSL & 2540'FWL,SEC.30)		

WELLPATH DATA (185 stations)

MD [ft]	Inclination [°]	Azimuth [°]	TVD [ft]	Vert Sect [ft]	North [ft]	East [ft]	Latitude	Longitude	DLS [°/100ft]	Toolface [°]	Build Rate [°/100ft]	Turn Rate [°/100ft]	Comments
0.00	0.000	138.920	0.00	0.00	0.00	0.00	40.1907983	-104.4812624	0.00	0.00	0.00	0.00	
81.00	0.430	138.920	81.00	0.20	-0.23	0.20	40.1907977	-104.4812616	0.53	-132.78	0.53	0.00	FIRST GYRODATA SURVEY
175.00	0.330	113.130	175.00	0.50	-0.60	0.68	40.1907966	-104.4812599	0.21	-167.77	-0.11	-27.44	
267.00	0.070	38.140	267.00	0.53	-0.66	0.96	40.1907965	-104.4812589	0.35	-151.62	-0.28	-81.51	
330.00	0.120	262.620	330.00	0.51	-0.64	0.92	40.1907965	-104.4812591	0.28	-154.33	0.08	-215.11	
425.00	0.200	123.360	425.00	0.61	-0.74	0.96	40.1907963	-104.4812590	0.32	-72.65	0.08	-146.59	
520.00	0.230	106.810	520.00	0.71	-0.89	1.28	40.1907958	-104.4812578	0.07	-143.18	0.03	-17.42	
614.00	0.180	13.600	614.00	0.59	-0.80	1.49	40.1907961	-104.4812570	0.32	-151.66	-0.05	-99.16	
709.00	0.130	263.030	709.00	0.47	-0.67	1.42	40.1907964	-104.4812573	0.27	-21.30	-0.05	-116.39	
804.00	0.490	247.260	803.99	0.70	-0.84	0.94	40.1907960	-104.4812590	0.39	67.27	0.38	-16.60	
898.00	0.580	263.340	897.99	1.03	-1.05	0.10	40.1907954	-104.4812621	0.19	-162.78	0.10	17.11	
993.00	0.230	232.280	992.99	1.28	-1.22	-0.53	40.1907950	-104.4812643	0.42	-20.09	-0.37	-32.69	
1088.00	0.420	223.030	1087.99	1.70	-1.59	-0.92	40.1907940	-104.4812657	0.21	153.95	0.20	-9.74	
1182.00	0.210	258.420	1181.98	2.04	-1.88	-1.32	40.1907932	-104.4812672	0.29	-170.42	-0.22	37.65	
1277.00	0.100	247.540	1276.98	2.14	-1.95	-1.57	40.1907930	-104.4812681	0.12	24.71	-0.12	-11.45	
1372.00	0.360	265.580	1371.98	2.24	-2.00	-1.95	40.1907929	-104.4812694	0.28	87.76	0.27	18.99	
1466.00	0.420	294.420	1465.98	2.21	-1.88	-2.55	40.1907932	-104.4812716	0.22	102.58	0.06	30.68	
1561.00	0.410	308.110	1560.98	1.94	-1.53	-3.14	40.1907942	-104.4812736	0.10	-133.12	-0.01	14.41	
1656.00	0.300	261.020	1655.98	1.83	-1.36	-3.65	40.1907947	-104.4812755	0.32	105.23	-0.12	-49.57	
1751.00	0.400	319.890	1750.98	1.68	-1.14	-4.11	40.1907953	-104.4812771	0.37	159.25	0.11	61.97	
1846.00	0.170	355.600	1845.97	1.32	-0.75	-4.33	40.1907964	-104.4812779	0.29	61.83	-0.24	37.59	
1922.00	0.200	8.900	1921.97	1.08	-0.50	-4.32	40.1907971	-104.4812778	0.07	-174.49	0.04	17.50	LAST GYRODATA SURVEY
1990.00	0.060	355.740	1989.97	0.93	-0.35	-4.31	40.1907975	-104.4812778	0.21	159.43	-0.21	-19.35	FIRST BH MWD SURVEY
2085.00	0.090	141.630	2084.97	0.93	-0.36	-4.26	40.1907975	-104.4812776	0.15	118.80	0.03	153.57	
2179.00	1.600	257.610	2178.96	1.43	-0.70	-5.50	40.1907966	-104.4812821	1.75	0.60	1.61	123.38	
2274.00	3.540	257.940	2273.86	2.88	-1.60	-9.66	40.1907942	-104.4812970	2.04	1.67	2.04	0.35	
2368.00	4.970	258.420	2367.60	5.21	-3.02	-16.49	40.1907906	-104.4813215	1.52	-11.78	1.52	0.51	
2463.00	5.830	256.660	2462.18	8.31	-4.96	-25.22	40.1907855	-104.4813528	0.92	4.44	0.91	-1.85	
2558.00	6.880	257.340	2556.59	12.02	-7.32	-35.46	40.1907793	-104.4813896	1.11	9.89	1.11	0.72	
2652.00	7.670	258.370	2649.84	16.06	-9.82	-47.10	40.1907729	-104.4814313	0.85	0.25	0.84	1.10	

REFERENCE WELLPATH IDENTIFICATION

Operator	NOBLE ENERGY, INC	Well	GUTTERSEN YY06 -775
Field	WELD COUNTY (NOBLE NAD 83 GRID)	API/Legal	
Facility	SEC.30-T03N-R63W	Wellbore	GUTTERSEN YY06 -775 AWP
Slot	SLOT#10 GUTTERSEN YY06 -775 (601'FSL & 2540'FWL,SEC.30)		

WELLPATH DATA (185 stations)

MD [ft]	Inclination [°]	Azimuth [°]	TVD [ft]	Vert Sect [ft]	North [ft]	East [ft]	Latitude	Longitude	DLS [°/100ft]	Toolface [°]	Build Rate [°/100ft]	Turn Rate [°/100ft]	Comments
2747.00	9.580	258.420	2743.76	20.78	-12.68	-61.06	40.1907654	-104.4814814	2.01	-1.52	2.01	0.05	
2842.00	12.750	258.040	2836.95	26.92	-16.44	-79.06	40.1907557	-104.4815460	3.34	6.23	3.34	-0.40	
2936.00	15.060	259.010	2928.19	34.34	-20.92	-101.20	40.1907441	-104.4816254	2.47	-6.45	2.46	1.03	
3031.00	17.330	258.150	3019.41	43.04	-26.18	-127.17	40.1907305	-104.4817186	2.40	1.57	2.39	-0.91	
3126.00	18.490	258.250	3109.80	52.81	-32.16	-155.76	40.1907150	-104.4818212	1.22	8.10	1.22	0.11	
3221.00	22.280	259.670	3198.84	63.41	-38.45	-188.24	40.1906987	-104.4819377	4.02	143.12	3.99	1.49	
3315.00	22.090	260.050	3285.88	74.30	-44.70	-223.18	40.1906827	-104.4820630	0.25	-44.92	-0.20	0.40	
3410.00	22.580	258.790	3373.75	85.65	-51.34	-258.67	40.1906656	-104.4821903	0.72	50.61	0.52	-1.33	
3505.00	22.850	259.630	3461.39	97.30	-58.20	-294.70	40.1906479	-104.4823195	0.44	-158.91	0.28	0.88	
3599.00	22.700	259.480	3548.06	108.64	-64.80	-330.49	40.1906309	-104.4824479	0.17	14.02	-0.16	-0.16	
3694.00	22.950	259.640	3635.62	120.13	-71.48	-366.73	40.1906137	-104.4825778	0.27	-105.67	0.26	0.17	
3789.00	22.870	258.890	3723.12	131.84	-78.36	-403.06	40.1905959	-104.4827082	0.32	-13.64	-0.08	-0.79	
3884.00	23.080	258.760	3810.59	143.86	-85.55	-439.44	40.1905773	-104.4828387	0.23	68.36	0.22	-0.14	
3978.00	23.170	259.330	3897.04	155.68	-92.57	-475.69	40.1905592	-104.4829687	0.26	-129.92	0.10	0.61	
4073.00	22.940	258.620	3984.45	167.64	-99.68	-512.20	40.1905409	-104.4830997	0.38	29.82	-0.24	-0.75	
4168.00	23.070	258.810	4071.89	179.73	-106.95	-548.61	40.1905221	-104.4832303	0.16	139.66	0.14	0.20	
4263.00	22.520	260.040	4159.47	191.30	-113.70	-584.79	40.1905046	-104.4833600	0.77	-171.85	-0.58	1.29	
4357.00	22.440	260.010	4246.33	202.22	-119.93	-620.19	40.1904887	-104.4834870	0.09	-74.39	-0.09	-0.03	
4452.00	22.540	259.100	4334.11	213.56	-126.52	-655.92	40.1904717	-104.4836152	0.38	-151.13	0.11	-0.96	
4546.00	22.450	258.970	4420.95	225.08	-133.36	-691.23	40.1904540	-104.4837418	0.11	-159.11	-0.10	-0.14	
4641.00	22.440	258.960	4508.76	236.75	-140.30	-726.83	40.1904361	-104.4838695	0.01	152.28	-0.01	-0.01	
4736.00	22.260	259.210	4596.62	248.30	-147.14	-762.30	40.1904185	-104.4839967	0.21	39.18	-0.19	0.26	
4830.00	22.410	259.530	4683.57	259.55	-153.73	-797.41	40.1904015	-104.4841227	0.21	-162.14	0.16	0.34	
4925.00	21.890	259.080	4771.56	270.86	-160.38	-832.61	40.1903843	-104.4842489	0.58	-101.30	-0.55	-0.47	
5020.00	21.850	258.530	4859.72	282.34	-167.25	-867.32	40.1903666	-104.4843734	0.22	25.04	-0.04	-0.58	
5114.00	22.100	258.840	4946.89	293.81	-174.15	-901.81	40.1903487	-104.4844972	0.29	128.06	0.27	0.33	
5209.00	21.720	260.170	5035.03	304.90	-180.61	-936.67	40.1903321	-104.4846222	0.66	-135.72	-0.40	1.40	
5304.00	21.540	259.690	5123.34	315.60	-186.73	-971.15	40.1903164	-104.4847458	0.27	155.06	-0.19	-0.51	
5398.00	20.920	260.500	5210.96	325.92	-192.59	-1004.68	40.1903013	-104.4848661	0.73	-6.14	-0.66	0.86	
5493.00	22.110	260.160	5299.34	336.34	-198.44	-1039.02	40.1902863	-104.4849892	1.26	50.40	1.25	-0.36	

REFERENCE WELLPATH IDENTIFICATION

Operator	NOBLE ENERGY, INC	Well	GUTTERSEN YY06 -775
Field	WELD COUNTY (NOBLE NAD 83 GRID)	API/Legal	
Facility	SEC.30-T03N-R63W	Wellbore	GUTTERSEN YY06 -775 AWB
Slot	SLOT#10 GUTTERSEN YY06 -775 (601'FSL & 2540'FWL,SEC.30)		

WELLPATH DATA (185 stations)

MD [ft]	Inclination [°]	Azimuth [°]	TVD [ft]	Vert Sect [ft]	North [ft]	East [ft]	Latitude	Longitude	DLS [°/100ft]	Toolface [°]	Build Rate [°/100ft]	Turn Rate [°/100ft]	Comments
5588.00	22.160	260.320	5387.34	347.09	-204.51	-1074.30	40.1902708	-104.4851157	0.08	150.20	0.05	0.17	
5683.00	21.900	260.720	5475.40	357.63	-210.38	-1109.44	40.1902558	-104.4852418	0.32	57.48	-0.27	0.42	
5777.00	22.030	261.260	5562.58	367.76	-215.89	-1144.17	40.1902418	-104.4853663	0.26	170.83	0.14	0.57	
5872.00	21.800	261.360	5650.71	377.78	-221.24	-1179.22	40.1902282	-104.4854919	0.25	66.80	-0.24	0.11	
5967.00	21.960	262.340	5738.87	387.46	-226.26	-1214.26	40.1902155	-104.4856176	0.42	-55.76	0.17	1.03	
6061.00	22.170	261.530	5825.99	397.07	-231.22	-1249.23	40.1902030	-104.4857429	0.39	154.99	0.22	-0.86	
6156.00	21.550	262.320	5914.15	406.71	-236.19	-1284.25	40.1901904	-104.4858685	0.72	-50.93	-0.65	0.83	
6251.00	21.710	261.790	6002.46	416.17	-241.03	-1318.93	40.1901782	-104.4859928	0.27	-50.30	0.17	-0.56	
6345.00	21.900	261.180	6089.74	425.93	-246.20	-1353.46	40.1901651	-104.4861166	0.31	-86.46	0.20	-0.65	
6440.00	22.560	249.900	6177.72	439.49	-255.18	-1388.10	40.1901416	-104.4862409	4.54	-69.45	0.69	-11.87	
6534.00	25.340	236.370	6263.68	461.22	-272.54	-1421.81	40.1900950	-104.4863623	6.53	-58.52	2.96	-14.39	
6629.00	29.640	224.040	6348.00	493.63	-300.72	-1455.11	40.1900187	-104.4864826	7.49	-58.15	4.53	-12.98	
6724.00	35.680	209.740	6428.07	538.35	-341.76	-1485.26	40.1899070	-104.4865922	10.28	-58.01	6.36	-15.05	
6819.00	41.460	197.410	6502.42	595.17	-395.95	-1508.46	40.1897589	-104.4866775	10.10	-20.02	6.08	-12.98	
6913.00	50.320	193.270	6567.80	661.99	-461.00	-1526.12	40.1895810	-104.4867433	9.94	-48.96	9.43	-4.40	
7008.00	56.800	184.820	6624.26	738.25	-536.35	-1537.87	40.1893745	-104.4867885	9.88	-26.52	6.82	-8.89	
7103.00	63.740	181.000	6671.36	820.37	-618.67	-1541.96	40.1891487	-104.4868065	8.09	15.33	7.31	-4.02	
7198.00	72.050	183.380	6707.08	907.90	-706.54	-1545.38	40.1889076	-104.4868223	9.05	0.21	8.75	2.51	
7292.00	82.720	183.420	6727.58	999.23	-797.97	-1550.81	40.1886568	-104.4868455	11.35	-5.33	11.35	0.04	
7387.00	90.890	182.660	6732.87	1093.69	-892.61	-1555.83	40.1883972	-104.4868673	8.64	-94.23	8.60	-0.80	
7482.00	90.770	181.040	6731.49	1188.17	-987.55	-1558.90	40.1881367	-104.4868822	1.71	-81.05	-0.13	-1.71	
7576.00	91.050	179.260	6730.00	1281.34	-1081.53	-1559.15	40.1878787	-104.4868869	1.92	125.68	0.30	-1.89	
7671.00	90.770	179.650	6728.49	1375.34	-1176.52	-1558.24	40.1876180	-104.4868876	0.51	-47.06	-0.29	0.41	
7766.00	91.170	179.220	6726.88	1469.33	-1271.50	-1557.31	40.1873573	-104.4868881	0.62	154.60	0.42	-0.45	
7955.00	90.180	179.690	6724.66	1656.35	-1460.47	-1555.51	40.1868385	-104.4868894	0.58	-55.01	-0.52	0.25	
8050.00	90.250	179.590	6724.30	1750.40	-1555.47	-1554.91	40.1865777	-104.4868911	0.13	96.12	0.07	-0.11	
8145.00	90.220	179.870	6723.91	1844.48	-1650.47	-1554.46	40.1863170	-104.4868934	0.30	173.16	-0.03	0.29	
8240.00	89.970	179.900	6723.75	1938.59	-1745.47	-1554.27	40.1860562	-104.4868966	0.27	39.81	-0.26	0.03	
8334.00	90.030	179.950	6723.75	2031.72	-1839.47	-1554.15	40.1857982	-104.4869000	0.08	-80.36	0.06	0.05	
8524.00	90.120	179.420	6723.51	2219.85	-2029.47	-1553.11	40.1852766	-104.4869041	0.28	-15.61	0.05	-0.28	

REFERENCE WELLPATH IDENTIFICATION

Operator	NOBLE ENERGY, INC	Well	GUTTERSEN YY06 -775
Field	WELD COUNTY (NOBLE NAD 83 GRID)	API/Legal	
Facility	SEC.30-T03N-R63W	Wellbore	GUTTERSEN YY06 -775 AWP
Slot	SLOT#10 GUTTERSEN YY06 -775 (601'FSL & 2540'FWL,SEC.30)		

WELLPATH DATA (185 stations)

MD [ft]	Inclination [°]	Azimuth [°]	TVD [ft]	Vert Sect [ft]	North [ft]	East [ft]	Latitude	Longitude	DLS [°/100ft]	Toolface [°]	Build Rate [°/100ft]	Turn Rate [°/100ft]	Comments
8618.00	90.800	179.230	6722.75	2312.84	-2123.46	-1552.00	40.1850186	-104.4869039	0.75	158.48	0.72	-0.20	
8713.00	90.090	179.510	6722.01	2406.83	-2218.45	-1550.95	40.1847579	-104.4869041	0.80	-79.38	-0.75	0.29	
8808.00	90.120	179.350	6721.84	2500.83	-2313.44	-1550.01	40.1844971	-104.4869046	0.17	-122.47	0.03	-0.17	
8997.00	89.910	179.020	6721.79	2687.73	-2502.42	-1547.32	40.1839783	-104.4869027	0.21	69.44	-0.11	-0.17	
9092.00	90.180	179.740	6721.72	2781.73	-2597.42	-1546.29	40.1837175	-104.4869029	0.81	-124.59	0.28	0.76	
9187.00	89.780	179.160	6721.75	2875.74	-2692.41	-1545.38	40.1834567	-104.4869035	0.74	13.67	-0.42	-0.61	
9281.00	90.150	179.250	6721.81	2968.70	-2786.40	-1544.08	40.1831987	-104.4869027	0.41	57.34	0.39	0.10	
9376.00	90.400	179.640	6721.35	3062.71	-2881.40	-1543.16	40.1829379	-104.4869033	0.49	22.75	0.26	0.41	
9471.00	90.710	179.770	6720.43	3156.77	-2976.39	-1542.67	40.1826772	-104.4869054	0.35	-104.04	0.33	0.14	
9565.00	90.650	179.530	6719.31	3249.83	-3070.38	-1542.09	40.1824192	-104.4869072	0.26	160.62	-0.06	-0.26	
9660.00	89.570	179.910	6719.13	3343.91	-3165.38	-1541.63	40.1821584	-104.4869094	1.21	-52.65	-1.14	0.40	
9754.00	90.150	179.150	6719.36	3436.95	-3259.37	-1540.86	40.1819004	-104.4869105	1.02	97.43	0.62	-0.81	
9849.00	90.030	180.070	6719.21	3530.99	-3354.37	-1540.21	40.1816396	-104.4869121	0.98	-132.64	-0.13	0.97	
9944.00	89.450	179.440	6719.64	3625.07	-3449.37	-1539.80	40.1813789	-104.4869145	0.90	23.84	-0.61	-0.66	
10038.00	90.310	179.820	6719.84	3718.13	-3543.36	-1539.20	40.1811208	-104.4869162	1.00	-142.22	0.91	0.40	
10133.00	89.910	179.510	6719.66	3812.20	-3638.36	-1538.64	40.1808601	-104.4869181	0.53	82.97	-0.42	-0.33	
10228.00	90.000	180.240	6719.73	3906.30	-3733.36	-1538.44	40.1805993	-104.4869212	0.77	-85.74	0.09	0.77	
10322.00	90.120	178.630	6719.63	3999.32	-3827.35	-1537.51	40.1803413	-104.4869217	1.72	90.00	0.13	-1.71	
10417.00	90.120	179.140	6719.44	4093.19	-3922.33	-1535.66	40.1800805	-104.4869190	0.54	-85.10	0.00	0.54	
10511.00	90.150	178.790	6719.21	4186.09	-4016.32	-1533.96	40.1798225	-104.4869168	0.37	87.88	0.03	-0.37	
10606.00	90.250	181.500	6718.88	4280.25	-4111.31	-1534.20	40.1795618	-104.4869215	2.85	112.38	0.11	2.85	
10701.00	90.180	181.670	6718.53	4374.71	-4206.27	-1536.83	40.1793012	-104.4869348	0.19	84.94	-0.07	0.18	
10796.00	90.280	182.800	6718.14	4469.27	-4301.20	-1540.53	40.1790407	-104.4869519	1.19	-93.67	0.11	1.19	
10890.00	90.120	180.310	6717.82	4562.71	-4395.15	-1543.09	40.1787829	-104.4869649	2.65	-21.80	-0.17	-2.65	
10985.00	90.220	180.270	6717.53	4656.91	-4490.15	-1543.57	40.1785222	-104.4869705	0.11	-87.34	0.11	-0.04	
11080.00	90.310	178.330	6717.09	4750.88	-4585.14	-1542.41	40.1782614	-104.4869702	2.04	95.92	0.09	-2.04	
11174.00	90.030	181.030	6716.82	4843.95	-4679.13	-1541.88	40.1780034	-104.4869722	2.89	-86.83	-0.30	2.87	
11269.00	90.220	177.600	6716.61	4937.91	-4774.11	-1540.74	40.1777427	-104.4869720	3.62	77.62	0.20	-3.61	
11364.00	90.400	178.420	6716.09	5031.55	-4869.05	-1537.45	40.1774820	-104.4869641	0.88	-119.96	0.19	0.86	
11458.00	89.910	177.570	6715.84	5124.19	-4962.99	-1534.16	40.1772240	-104.4869562	1.04	80.31	-0.52	-0.90	

REFERENCE WELLPATH IDENTIFICATION

Operator	NOBLE ENERGY, INC	Well	GUTTERSEN YY06 -775
Field	WELD COUNTY (NOBLE NAD 83 GRID)	API/Legal	
Facility	SEC.30-T03N-R63W	Wellbore	GUTTERSEN YY06 -775 AWB
Slot	SLOT#10 GUTTERSEN YY06 -775 (601'FSL & 2540'FWL,SEC.30)		

WELLPATH DATA (185 stations)

MD [ft]	Inclination [°]	Azimuth [°]	TVD [ft]	Vert Sect [ft]	North [ft]	East [ft]	Latitude	Longitude	DLS [°/100ft]	Toolface [°]	Build Rate [°/100ft]	Turn Rate [°/100ft]	Comments
11553.00	90.120	178.800	6715.82	5217.88	-5057.94	-1531.15	40.1769633	-104.4869493	1.31	-96.90	0.22	1.29	
11648.00	89.970	177.560	6715.74	5311.56	-5152.89	-1528.13	40.1767026	-104.4869424	1.31	60.25	-0.16	-1.31	
11742.00	90.890	179.170	6715.04	5404.30	-5246.85	-1525.45	40.1764446	-104.4869366	1.97	-131.03	0.98	1.71	
11837.00	89.750	177.860	6714.50	5498.07	-5341.81	-1522.99	40.1761839	-104.4869317	1.83	52.43	-1.20	-1.38	
11931.00	89.850	177.990	6714.83	5590.70	-5435.75	-1519.58	40.1759260	-104.4869234	0.17	91.20	0.11	0.14	
12026.00	89.820	179.430	6715.11	5684.52	-5530.72	-1517.45	40.1756652	-104.4869196	1.52	93.75	-0.03	1.52	
12121.00	89.750	180.500	6715.46	5778.65	-5625.72	-1517.39	40.1754044	-104.4869233	1.13	-101.07	-0.07	1.13	
12215.00	89.660	180.040	6715.95	5871.85	-5719.71	-1517.83	40.1751465	-104.4869287	0.50	53.72	-0.10	-0.49	
12310.00	90.460	181.130	6715.85	5966.11	-5814.71	-1518.80	40.1748857	-104.4869360	1.42	-88.97	0.84	1.15	
12404.00	90.490	179.450	6715.07	6059.32	-5908.70	-1519.28	40.1746278	-104.4869416	1.79	83.55	0.03	-1.79	
12499.00	90.620	180.600	6714.15	6153.45	-6003.69	-1519.32	40.1743670	-104.4869456	1.22	-93.57	0.14	1.21	
12594.00	90.580	179.960	6713.15	6247.65	-6098.69	-1519.78	40.1741063	-104.4869512	0.67	-177.27	-0.04	-0.67	
12689.00	90.370	179.950	6712.37	6341.77	-6193.68	-1519.71	40.1738456	-104.4869548	0.22	35.44	-0.22	-0.01	
12783.00	91.690	180.890	6710.68	6434.99	-6287.66	-1520.40	40.1735876	-104.4869611	1.72	-159.62	1.40	1.00	
12878.00	89.940	180.240	6709.32	6529.23	-6382.64	-1521.33	40.1733269	-104.4869683	1.97	-50.09	-1.84	-0.68	
12973.00	90.400	179.690	6709.04	6623.36	-6477.64	-1521.27	40.1730662	-104.4869720	0.75	162.06	0.48	-0.58	
13067.00	89.350	180.030	6709.25	6716.48	-6571.64	-1521.04	40.1728082	-104.4869750	1.17	-58.34	-1.12	0.36	
13162.00	89.720	179.430	6710.02	6810.55	-6666.64	-1520.60	40.1725474	-104.4869773	0.74	49.27	0.39	-0.63	
13257.00	90.650	180.510	6709.71	6904.68	-6761.63	-1520.55	40.1722867	-104.4869810	1.50	-137.79	0.98	1.14	
13352.00	90.220	180.120	6708.99	6998.88	-6856.63	-1521.07	40.1720259	-104.4869868	0.61	-115.05	-0.45	-0.41	
13446.00	89.720	179.050	6709.04	7091.93	-6950.62	-1520.39	40.1717679	-104.4869882	1.26	76.57	-0.53	-1.14	
13541.00	89.880	179.720	6709.37	7185.92	-7045.62	-1519.37	40.1715071	-104.4869884	0.73	99.21	0.17	0.71	
13635.00	89.820	180.090	6709.62	7279.05	-7139.62	-1519.21	40.1712491	-104.4869917	0.40	-116.57	-0.06	0.39	
13730.00	89.630	179.710	6710.07	7373.16	-7234.62	-1519.05	40.1709884	-104.4869950	0.45	20.27	-0.20	-0.40	
13824.00	90.280	179.950	6710.15	7466.27	-7328.62	-1518.77	40.1707303	-104.4869978	0.74	-127.41	0.69	0.26	
13919.00	89.630	179.100	6710.22	7560.30	-7423.61	-1517.98	40.1704696	-104.4869989	1.13	57.89	-0.68	-0.89	
14014.00	90.860	181.060	6709.82	7654.45	-7518.60	-1518.11	40.1702088	-104.4870032	2.44	-126.78	1.29	2.06	
14108.00	90.060	179.990	6709.06	7747.70	-7612.59	-1518.97	40.1699509	-104.4870102	1.42	-13.09	-0.85	-1.14	
14202.00	90.490	179.890	6708.61	7840.83	-7706.59	-1518.88	40.1696929	-104.4870137	0.47	31.38	0.46	-0.11	
14297.00	91.850	180.720	6706.67	7935.01	-7801.57	-1519.38	40.1694322	-104.4870193	1.68	-126.78	1.43	0.87	

REFERENCE WELLPATH IDENTIFICATION

Operator	NOBLE ENERGY, INC	Well	GUTTERSEN YY06 -775
Field	WELD COUNTY (NOBLE NAD 83 GRID)	API/Legal	
Facility	SEC.30-T03N-R63W	Wellbore	GUTTERSEN YY06 -775 AWP
Slot	SLOT#10 GUTTERSEN YY06 -775 (601'FSL & 2540'FWL,SEC.30)		

WELLPATH DATA (185 stations)

MD [ft]	Inclination [°]	Azimuth [°]	TVD [ft]	Vert Sect [ft]	North [ft]	East [ft]	Latitude	Longitude	DLS [°/100ft]	Toolface [°]	Build Rate [°/100ft]	Turn Rate [°/100ft]	Comments
14391.00	91.020	179.610	6704.32	8028.16	-7895.54	-1519.65	40.1691743	-104.4870242	1.47	129.11	-0.88	-1.18	
14486.00	90.150	180.680	6703.35	8122.33	-7990.53	-1519.89	40.1689135	-104.4870289	1.45	-64.32	-0.92	1.13	
14580.00	90.650	179.640	6702.69	8215.50	-8084.52	-1520.16	40.1686555	-104.4870337	1.23	-98.74	0.53	-1.11	
14675.00	90.550	178.990	6701.69	8309.48	-8179.51	-1519.02	40.1683948	-104.4870335	0.69	69.27	-0.11	-0.68	
14769.00	90.830	179.730	6700.56	8402.47	-8273.50	-1517.97	40.1681368	-104.4870336	0.84	79.58	0.30	0.79	
14864.00	91.010	180.710	6699.04	8496.64	-8368.48	-1518.33	40.1678761	-104.4870388	1.05	-9.20	0.19	1.03	
14959.00	92.490	180.470	6696.14	8590.86	-8463.43	-1519.31	40.1676155	-104.4870462	1.58	-154.85	1.56	-0.25	
15053.00	89.720	179.170	6694.32	8683.94	-8557.40	-1519.02	40.1673575	-104.4870489	3.26	71.57	-2.95	-1.38	
15148.00	90.400	181.210	6694.22	8778.11	-8652.40	-1519.33	40.1670968	-104.4870539	2.26	-133.45	0.72	2.15	
15243.00	89.320	180.070	6694.46	8872.38	-8747.39	-1520.39	40.1668361	-104.4870616	1.65	24.17	-1.14	-1.20	
15337.00	91.080	180.860	6694.13	8965.62	-8841.38	-1521.16	40.1665781	-104.4870682	2.05	-122.39	1.87	0.84	
15432.00	90.490	179.930	6692.83	9059.83	-8936.37	-1521.81	40.1663174	-104.4870744	1.16	173.80	-0.62	-0.98	
15527.00	90.030	179.980	6692.40	9153.96	-9031.37	-1521.74	40.1660567	-104.4870780	0.49	62.48	-0.48	0.05	
15622.00	90.650	181.170	6691.83	9248.22	-9126.36	-1522.69	40.1657960	-104.4870853	1.41	-159.86	0.65	1.25	
15717.00	89.750	180.840	6691.50	9342.56	-9221.34	-1524.35	40.1655353	-104.4870952	1.01	-58.76	-0.95	-0.35	
15811.00	90.120	180.230	6691.61	9435.82	-9315.34	-1525.23	40.1652773	-104.4871022	0.76	6.77	0.39	-0.65	
15906.00	90.710	180.300	6690.92	9530.02	-9410.33	-1525.67	40.1650166	-104.4871076	0.63	-101.72	0.62	0.07	
16001.00	90.490	179.240	6689.92	9624.09	-9505.32	-1525.29	40.1647558	-104.4871101	1.14	121.22	-0.23	-1.12	
16096.00	89.690	180.560	6689.77	9718.21	-9600.32	-1525.12	40.1644951	-104.4871134	1.62	-70.02	-0.84	1.39	
16190.00	90.250	179.020	6689.82	9811.30	-9694.32	-1524.78	40.1642371	-104.4871160	1.74	-96.58	0.60	-1.64	
16285.00	90.220	178.760	6689.43	9905.17	-9789.30	-1522.94	40.1639763	-104.4871133	0.28	28.07	-0.03	-0.27	
16380.00	90.520	178.920	6688.82	9999.03	-9884.28	-1521.02	40.1637155	-104.4871103	0.36	-175.60	0.32	0.17	
16474.00	90.000	178.880	6688.39	10091.92	-9978.26	-1519.21	40.1634575	-104.4871077	0.55	-51.34	-0.55	-0.04	
16569.00	90.920	177.730	6687.63	10185.63	-10073.21	-1516.40	40.1631968	-104.4871015	1.55	96.34	0.97	-1.21	
16664.00	90.830	178.540	6686.18	10279.29	-10168.15	-1513.31	40.1629361	-104.4870944	0.86	-140.42	-0.09	0.85	
16758.00	89.850	177.730	6685.62	10371.97	-10262.10	-1510.25	40.1626782	-104.4870872	1.35	39.09	-1.04	-0.86	
16853.00	90.650	178.380	6685.21	10465.62	-10357.04	-1507.03	40.1624175	-104.4870796	1.09	-145.30	0.84	0.68	
16947.00	90.000	177.930	6684.68	10558.31	-10450.99	-1504.00	40.1621595	-104.4870726	0.84	-59.04	-0.69	-0.48	
17042.00	90.090	177.780	6684.60	10651.90	-10545.92	-1500.45	40.1618988	-104.4870638	0.18	94.12	0.09	-0.16	
17136.00	90.000	179.030	6684.53	10744.66	-10639.88	-1497.83	40.1616408	-104.4870582	1.33	-78.98	-0.10	1.33	

REFERENCE WELLPATH IDENTIFICATION

Operator	NOBLE ENERGY, INC	Well	GUTTERSEN YY06 -775
Field	WELD COUNTY (NOBLE NAD 83 GRID)	API/Legal	
Facility	SEC.30-T03N-R63W	Wellbore	GUTTERSEN YY06 -775 AWB
Slot	SLOT#10 GUTTERSEN YY06 -775 (601'FSL & 2540'FWL,SEC.30)		

WELLPATH DATA (185 stations) † = interpolated, ‡ = extrapolated station

MD [ft]	Inclination [°]	Azimuth [°]	TVD [ft]	Vert Sect [ft]	North [ft]	East [ft]	Latitude	Longitude	DLS [°/100ft]	Toolface [°]	Build Rate [°/100ft]	Turn Rate [°/100ft]	Comments
17231.00	90.150	178.260	6684.40	10838.47	-10734.86	-1495.58	40.1613801	-104.4870541	0.83	109.90	0.16	-0.81	
17326.00	89.940	178.840	6684.33	10932.25	-10829.82	-1493.18	40.1611193	-104.4870494	0.65	120.70	-0.22	0.61	
17420.00	89.750	179.160	6684.58	11025.16	-10923.81	-1491.54	40.1608613	-104.4870473	0.40	-34.29	-0.20	0.34	
17456.00	89.970	179.010	6684.67	11060.75	-10959.81	-1490.96	40.1607625	-104.4870468	0.74	0.00	0.61	-0.42	LAST BH MWD SURVEY
17480.00‡	89.970	179.010	6684.68	11084.48	-10983.80	-1490.55	40.1606966	-104.4870463	0.00		0.00	0.00	PROJECTION TO BIT

HOLE & CASING SECTIONS - Ref Wellbore: GUTTERSEN YY06 -775 AWB Ref Wellpath: GUTTERSEN YY06 -775 AWP

String/Diameter	Start MD [ft]	End MD [ft]	Interval [ft]	Start TVD [ft]	End TVD [ft]	Start N/S [ft]	Start E/W [ft]	End N/S [ft]	End E/W [ft]
9.625in Casing Surface	30.00	1931.00	1901.00	30.00	1930.97	-0.03	0.03	-0.47	-4.32

REFERENCE WELLPATH IDENTIFICATION			
Operator	NOBLE ENERGY, INC	Well	GUTTERSEN YY06 -775
Field	WELD COUNTY (NOBLE NAD 83 GRID)	API/Legal	
Facility	SEC.30-T03N-R63W	Wellbore	GUTTERSEN YY06 -775 AWB
Slot	SLOT#10 GUTTERSEN YY06 -775 (601'FSL & 2540'FWL,SEC.30)		

TARGETS								
Name	TVD [ft]	North [ft]	East [ft]	Grid East [US ft]	Grid North [US ft]	Latitude	Longitude	Shape
SEC.06-T02N-R63W	0.00	-0.37	-38.00	3284560.26	1313984.89	40.1907985	-104.4813984	polygon
2D Polygon: dimensions not calculated								
SEC.31-T03N-R63W	0.00	-0.37	-38.00	3284560.26	1313984.89	40.1907985	-104.4813984	polygon
2D Polygon: dimensions not calculated								
GUTTERSEN YY06 -775 BHL Rev-1 (200'FSL & 970'FWL,SEC.06)	6689.00	-10985.62	-1490.53	3283107.80	1303000.13	40.1606916	-104.4870462	point
GUTTERSEN YY06 -775 TPZ Rev-1 (200'FNL & 970'FWL,SEC.31)	6720.00	-816.47	-1564.58	3283033.75	1313168.83	40.1886065	-104.4868955	point

WELLPATH COMPOSITION - Ref Wellbore: GUTTERSEN YY06 -775 AWB						Ref Wellpath: GUTTERSEN YY06 -775 AWP	
Start MD [ft]	End MD [ft]	Positional Uncertainty Model	Log Name/Comment		Wellbore		Survey Date
0.00	1922.00	Gyrodata 2015 - GC+DROP+COND	Gyrodata 2015 - GC+DROP+COND 13-1/2" <80 - 1922>		GUTTERSEN YY06 -775 AWB		7/23/2020
1922.00	17480.00	OWSG MWD rev2 (MS+IFR1) NOBLE	OWSG MWD Rev2 (MS+IFR1) NOBLE 8-1/2" <1990 - 17456>		GUTTERSEN YY06 -775 AWB		7/23/2020



Actual Wellpath Report

GUTTERSEN YY06 -775 AWP

Page 10 of 10



REFERENCE WELLPATH IDENTIFICATION

Operator	NOBLE ENERGY, INC	Well	GUTTERSEN YY06 -775
Field	WELD COUNTY (NOBLE NAD 83 GRID)	API/Legal	
Facility	SEC.30-T03N-R63W	Wellbore	GUTTERSEN YY06 -775 AWB
Slot	SLOT#10 GUTTERSEN YY06 -775 (601'FSL & 2540'FWL,SEC.30)		

WELLPATH COMMENTS

MD [ft]	Inclination [°]	Azimuth [°]	TVD [ft]	Comment
81.00	0.430	138.920	81.00	FIRST GYRODATA SURVEY
1922.00	0.200	8.900	1921.97	LAST GYRODATA SURVEY
1990.00	0.060	355.740	1989.97	FIRST BH MWD SURVEY
17456.00	89.970	179.010	6684.67	LAST BH MWD SURVEY
17480.00	89.970	179.010	6684.68	PROJECTION TO BIT