



Gamma Ray

LWD MEMORY LOG

Scale: Company: Noble Energy

1:240 Well: Gutteresen YY06-766

True Vertical Depth Field: Wattenberg

Depth Reference: County: Weld Country: United States

Driller's Depth State: Colorado

Status: Surface Location: 40° 11' 26.863" N Other Services:

Final Print Latitude: 104° 28' 52.068" W Directional

API No: 05-123-48643-00 Longitude: 30 TWN: 3N RGE: 63W

Job ID: 110462655 Permanent Datum (P.D.): Mean Sea Level Elevation: 0.00 ft Elev. KB: N/A

Log Measured From: Rig Floor Above P.D.: 4820.00 ft Elev. DF: 4820.00 ft

Dates Interval Magnetic Field Reference

From: 2020-07-19 Drilled (ft) Logged (ft) Azi Reference North: Grid Dip Angle: (deg) 66.57
To: 2020-07-20 Top: 1944.00 Bottom: 17354.00 Total Magnetic Field Strength: (nT) 52003
Spud: 2020-07-11 Bottom: 17354.00 Bottom: 17341.00 Mag to Reference North Correction: (deg) 7.26

Borehole Record

Casing Record

Hole Size (in)	From (ft)	To (ft)	Size (in)	Weight (lb/ft)	From (ft)	To (ft)
13.500	30.00	1944.00	9.625	36.00	30.00	1934.00
8.500	1944.00	17354.00				

Mud Record

Deviation Record

Type	From (ft)	To (ft)	Hole Size (in)	Interval (ft)	Inc Az (Start)	Inc Az (End)
Oil Based Mud	1944.00	17354.00	8.500	15410.00	0.36 317.04	90.37 180.70

Acquisition System Software Version

Other

Cadence	RT 5.7	Rig: H&P517
Plot Studio	5.7.8906.1	Contractor: Helmerich & Payne Drilling Co
		District: RMA Unit: D&E

(C) 2020 Baker Hughes Company - All rights reserved. Baker Hughes and its affiliates provides this information on an "as is" basis for general information purposes and believes it to be accurate as of the date of publication. Baker Hughes does not make any representation as to the accuracy or completeness of the information and makes no warranties of any kind, specific, implied or oral, to the fullest extent permissible by law, including those of merchantability and fitness for a particular purpose or use. Baker Hughes hereby disclaims any and all liability for any direct, indirect, consequential or special damages, claims for lost profits, or third party claims arising from the use of the information, whether a claim is asserted in contract, tort, or otherwise. The Baker Hughes logo is a trademark of Baker Hughes Company.

Log Run Summary

Run No	Bit Run No.	Bit Size (in)	Bit Type	Bit Gauge Length (in)	Assembly Type	Logged Interval		Bit Depth Interval		Date / Time		Circ. Hours
						Top (ft)	Bottom (ft)	From (ft)	To (ft)	Start Logging	End Logging	
1	1	8.500	PDC	3.00	AutoTrak Curve	2105.00	17341.00	1944.00	17354.00	2020-07-17 20:24	2020-07-19 13:54	40.33

Crew

Name	Arrive	Depart	Name	Arrive	Depart	Name	Arrive	Depart
------	--------	--------	------	--------	--------	------	--------	--------

	Wellsite	Wellsite		Wellsite	Wellsite		Wellsite	Wellsite
Tien Bui	2020-07-17	2020-07-20						

Witness

Name	Run
Dave Nielson	1
Jim Turner	1

Mud Properties Record

Date / Time	Run No.	Depth (ft)	Mud Type	Density (ppg)	Viscosity (cP)	pH	Fluid Loss (cm3)	Oil / Water	Source	Total Chlorides (ppm)	K+ (%)
2020-07-16 22:03	1	1944.00	Oil Based Mud	9.2	14	N/A	20.0	68/20	Active Pit	26500	0.00

Equipment and Service Data

Run No.	Tool	Serial Number	Measurement	Sensor Offset (ft)	Bit Offset (ft)	Max O.D. (in)	Min I.D. (in)
1	AutoTrak Curve Steering Unit	14236901	Near Bit Inclination	5.93	6.78	7.000	4.330
1	AutoTrak Curve Steering Unit	14236901	Near Bit VSS	5.93	6.78	7.000	4.330
1	AutoTrak Curve MWD	12118955	Gamma (single)	2.75	12.95	7.000	3.250
1	AutoTrak Curve MWD	12118955	Directional (mag)	12.27	22.47	7.000	3.250

Service and Tool Mnemonics

Mnemonic	Name	Description
ATC SU	AutoTrak Curve SU	Auto Trak Curve Steering Unit
ATC MWD	AutoTrak Curve MWD	Auto Trak Curve MWD
ATC LCPM	AutoTrak Curve LCPM	Auto Trak Curve LCPM

Comments

1	Baker Hughes Company run 1 utilized 6 ¾ inch NaviGamma services (Gamma Ray and Directional) behind an 8 ½ inch PDC bit and rotary steerable assembly from 1944 to 17354 feet MD (1944 to 6633 feet TVD).
2	Depth measurements were obtained from a depth control system not supplied or operated by Baker Hughes. Due to lack of control by Baker Hughes logging engineers, depth calibrations and measurements could not be independently verified.
3	The Gamma Ray Apparent (GRAM) data is presented 0 to 300 API, per the customer's request.

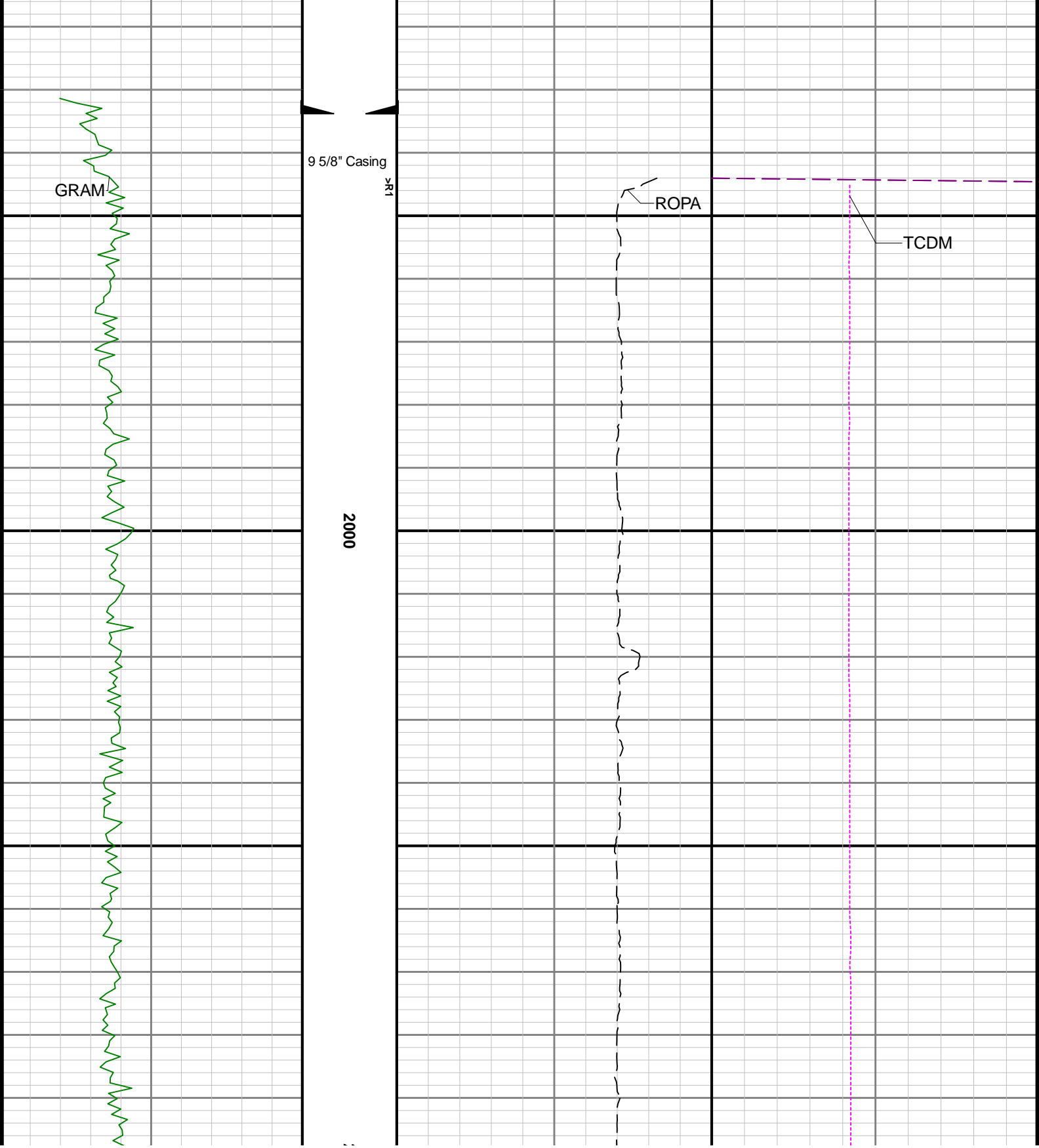
Remarks

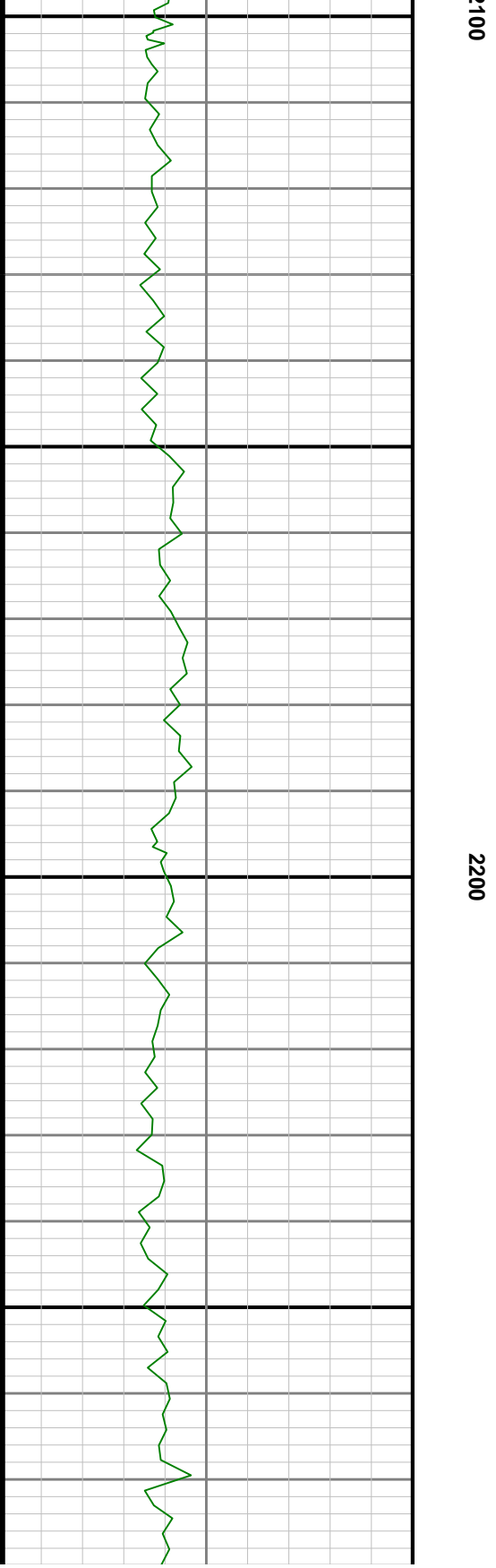
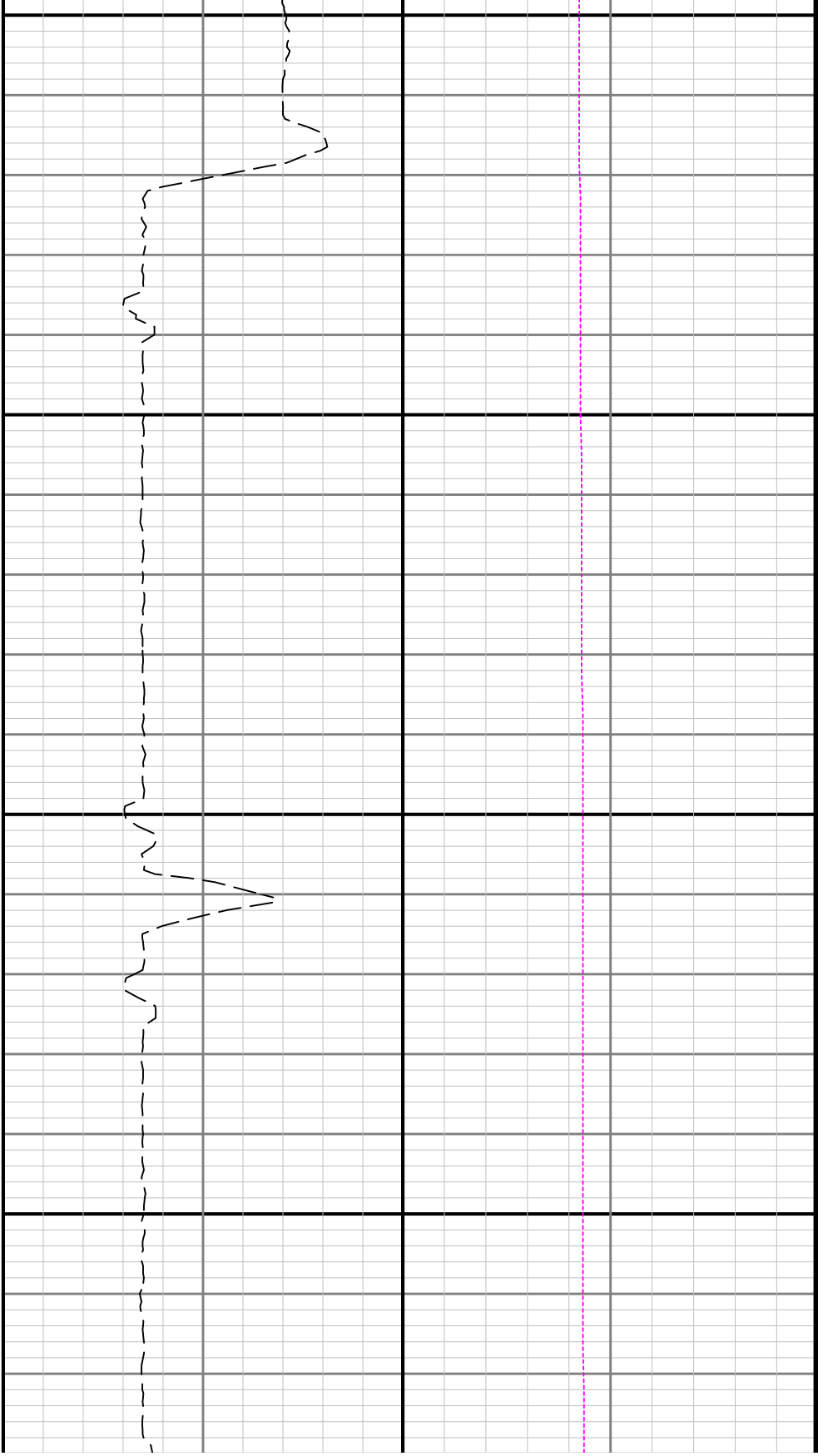
Number	Depth (ft)	Hole Section (in)	Run No.	Remark
--------	---------------	----------------------	---------	--------

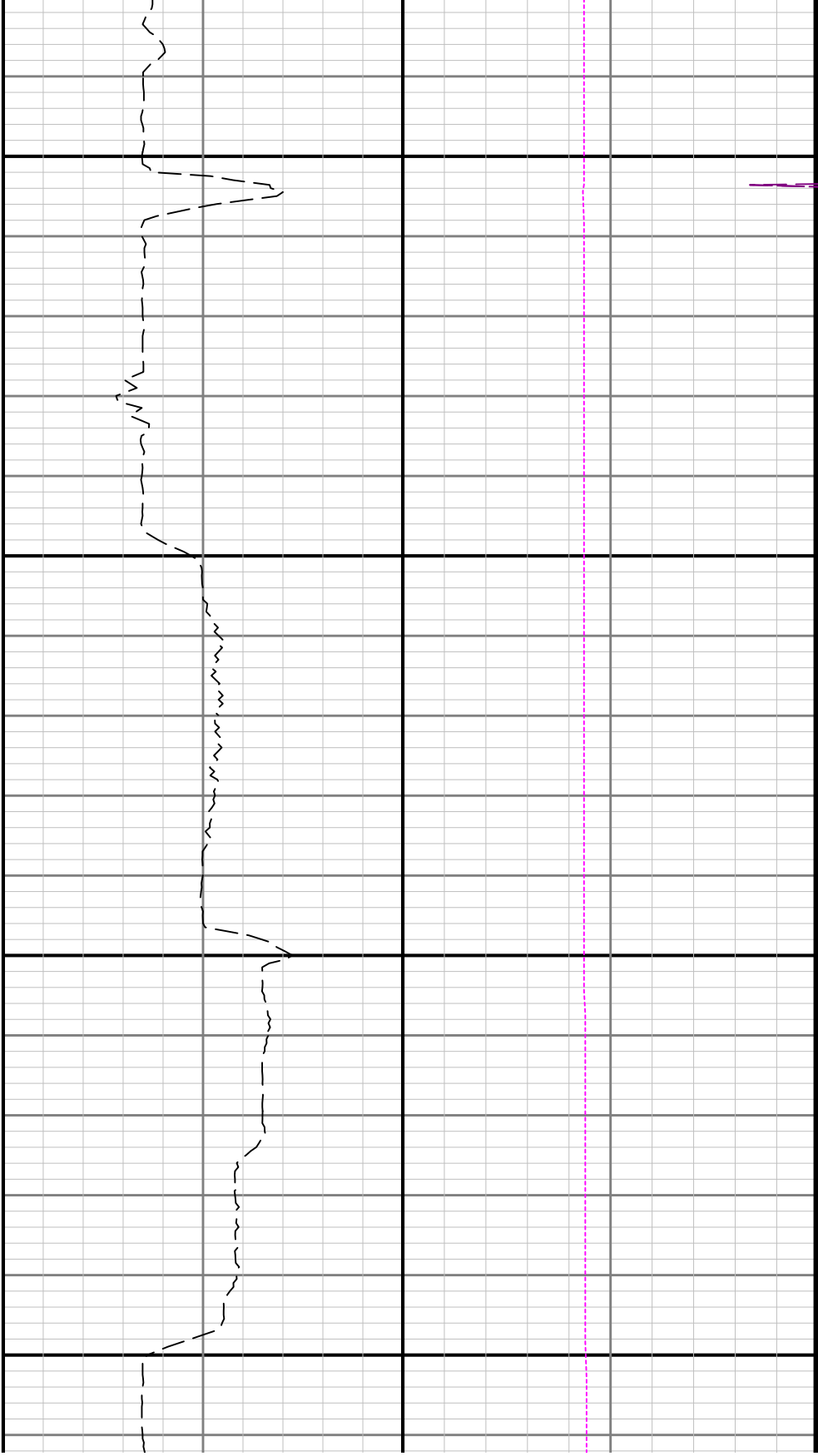
Curve Mnemonics

Presented Curves	Description	Units
ROPA	Depth Averaged ROP 3 ft Average	ft/h
WOBA	Weight On Bit 1 ft Average	klb
GRAM	Gamma Ray - Apparent - Memory 0.5 ft Average	API
TCDM	Directional Real-Time Survey Temperature	degF

Gamma Ray - Apparent 0.5 ft Average GRAM	TVD 1:240 feet	Depth Averaged ROP 3 ft Average ROPA	Weight On Bit, Average 1 ft Average WOBA
0 300		1000 0	0 50
API		ft/h	klb
			Downhole Temperature TCDM
			0 300
			degF

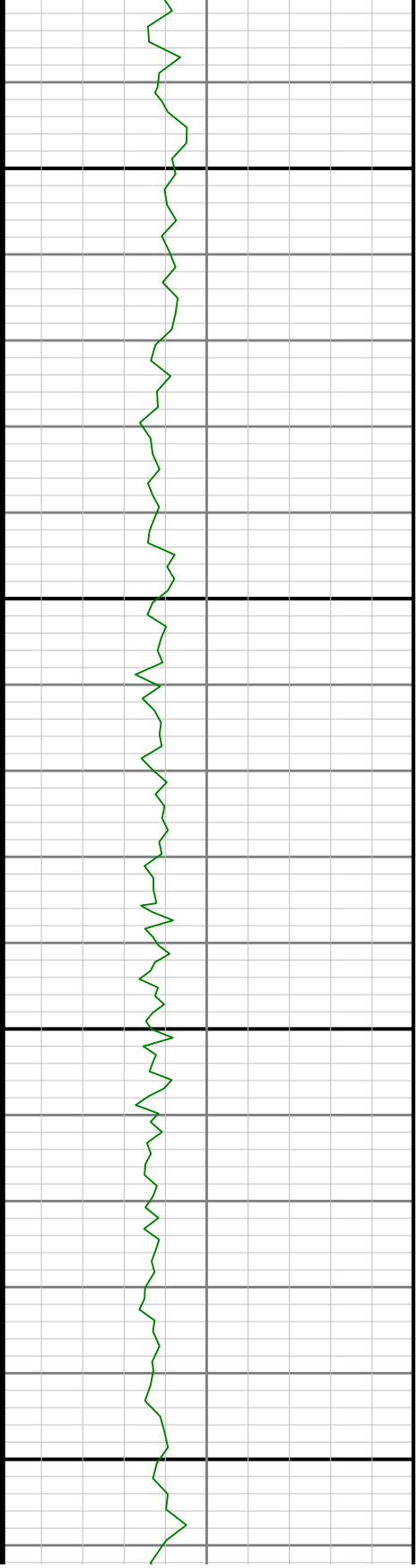


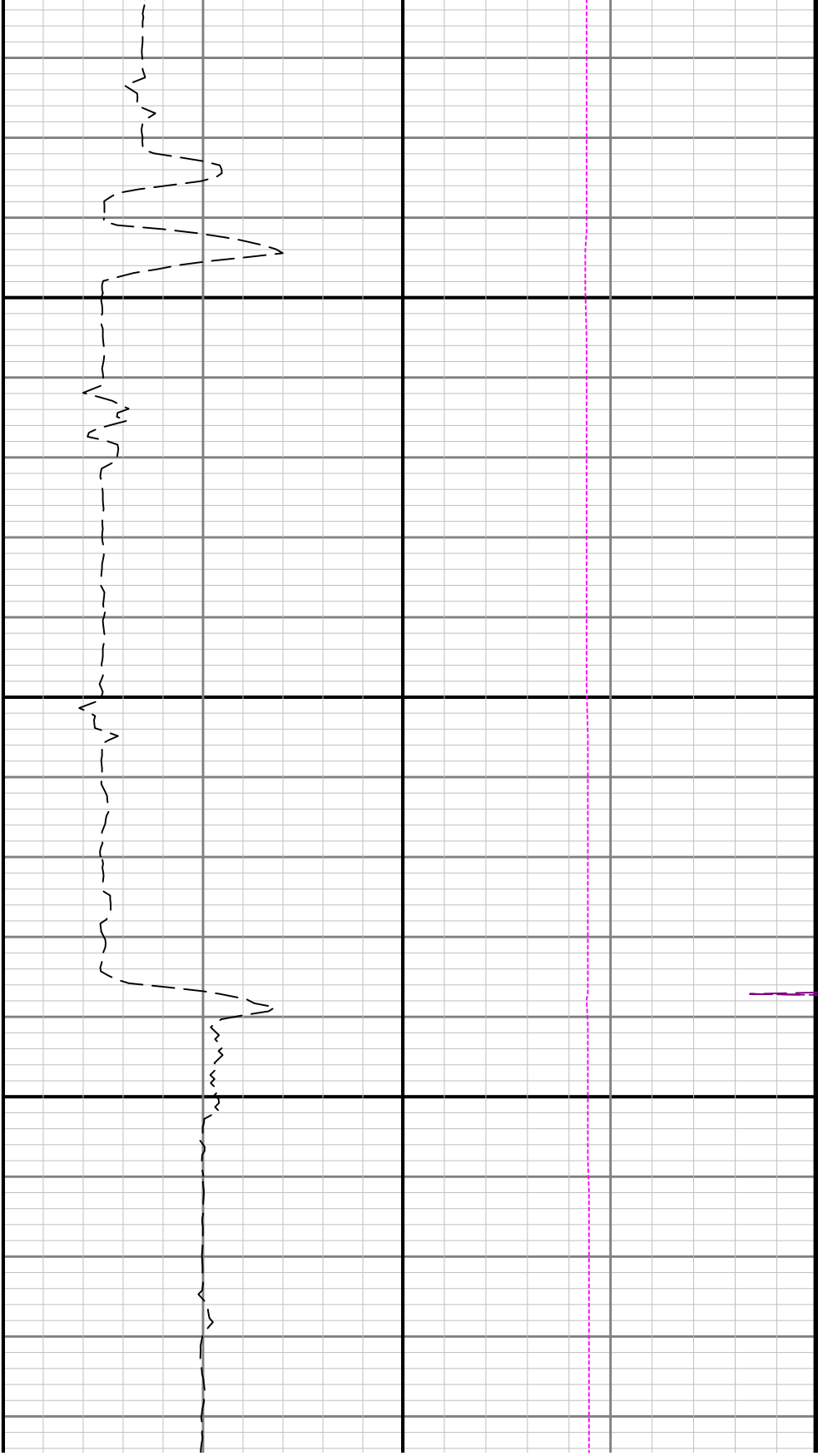




2300

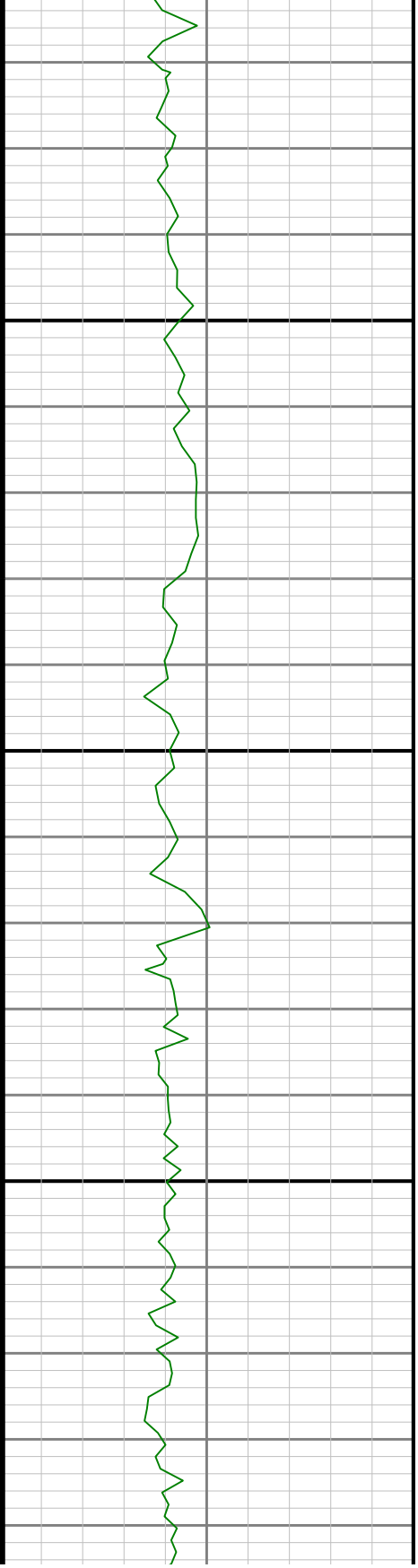
2400

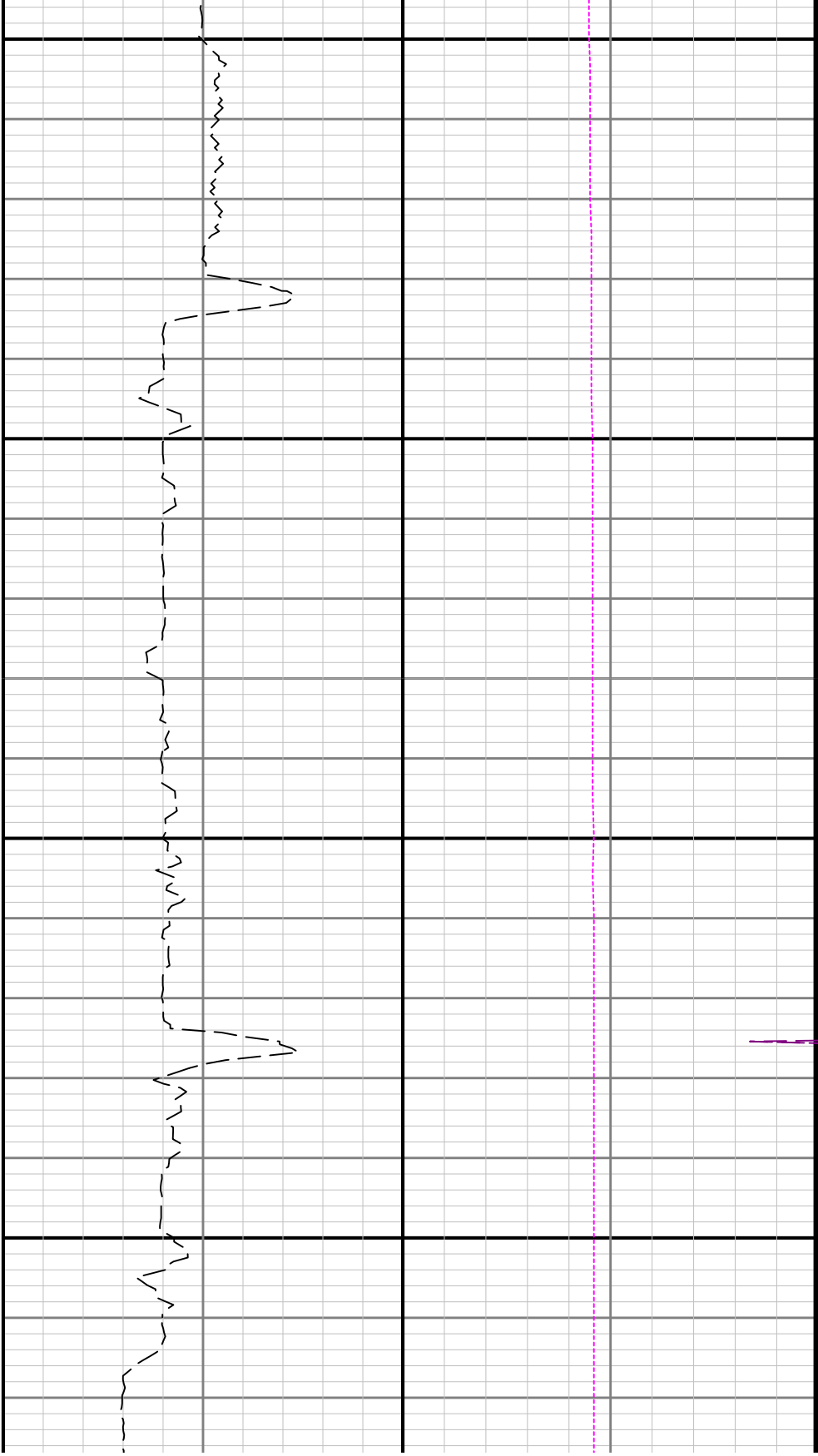




2500

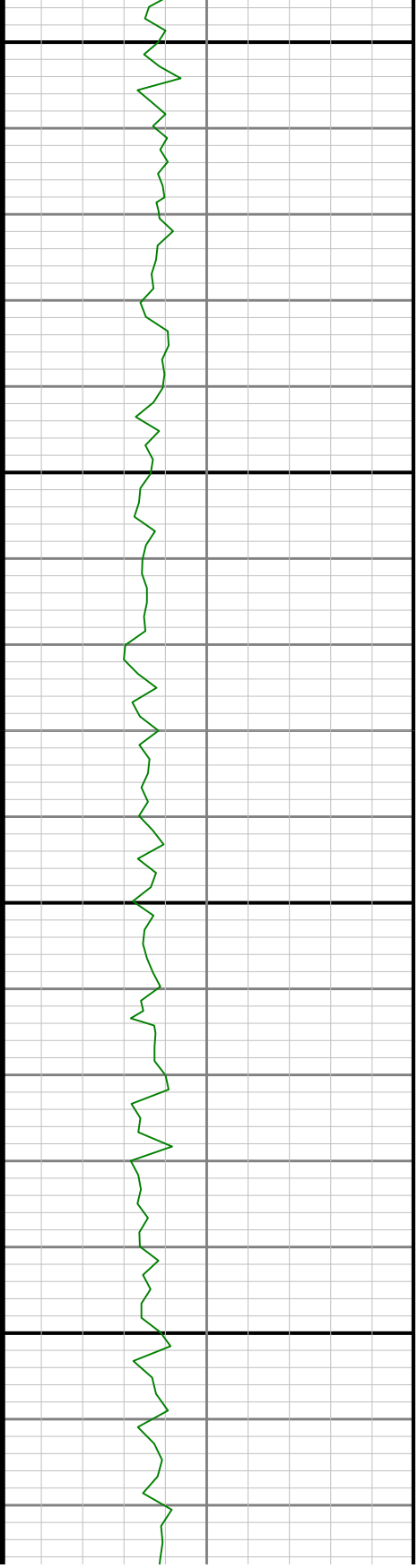
2600

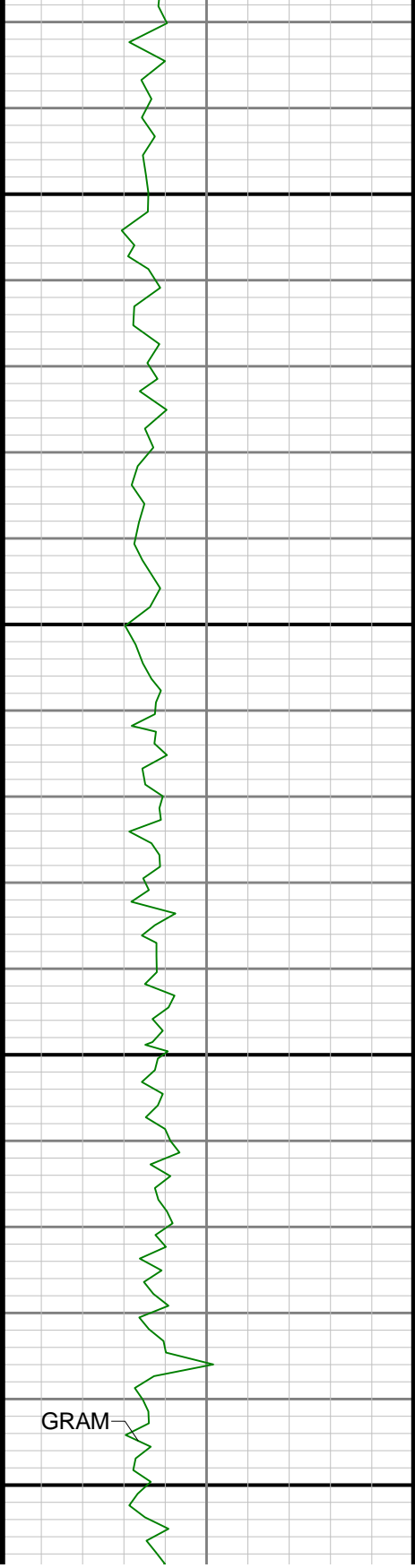




2700

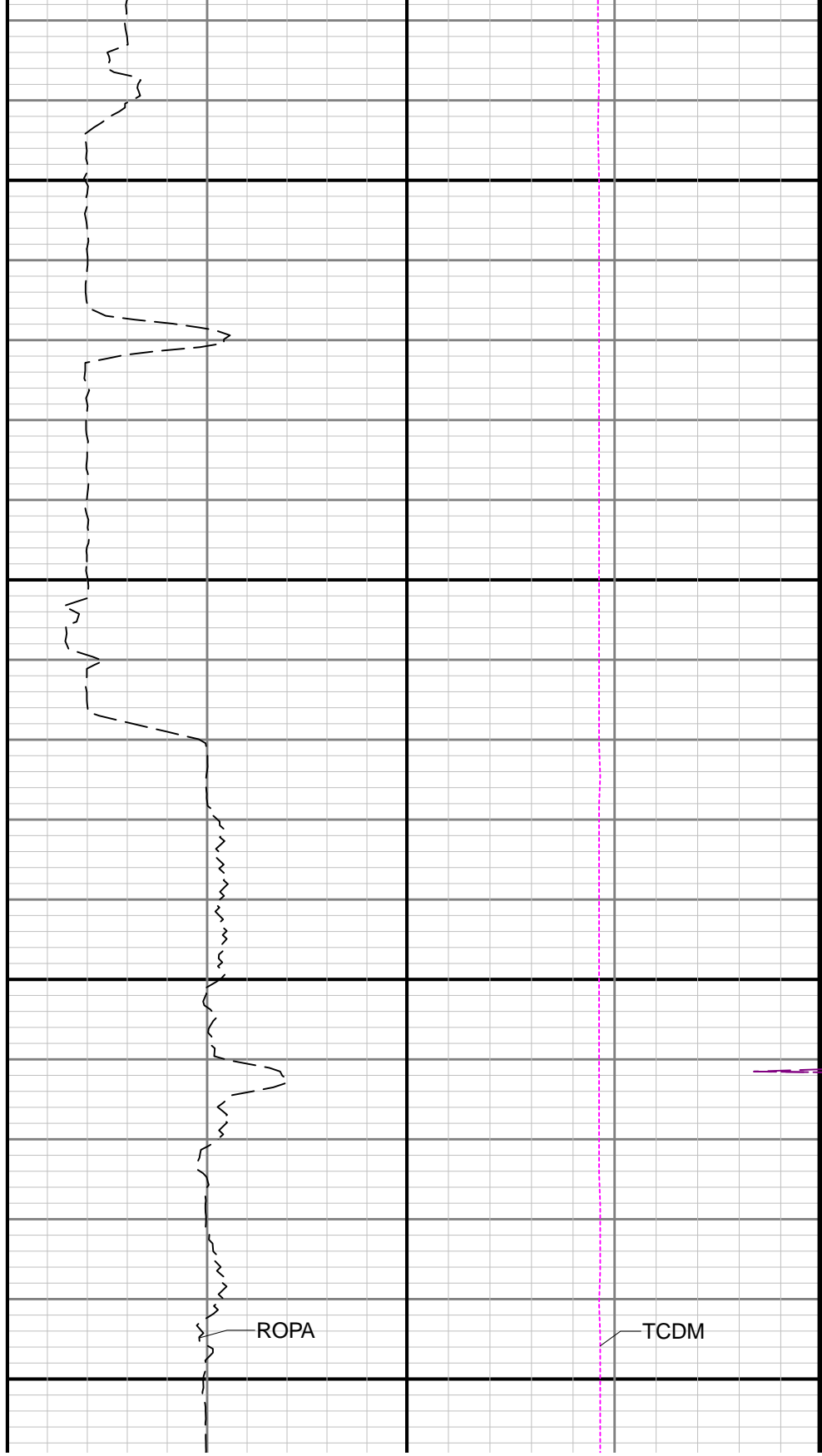
2800



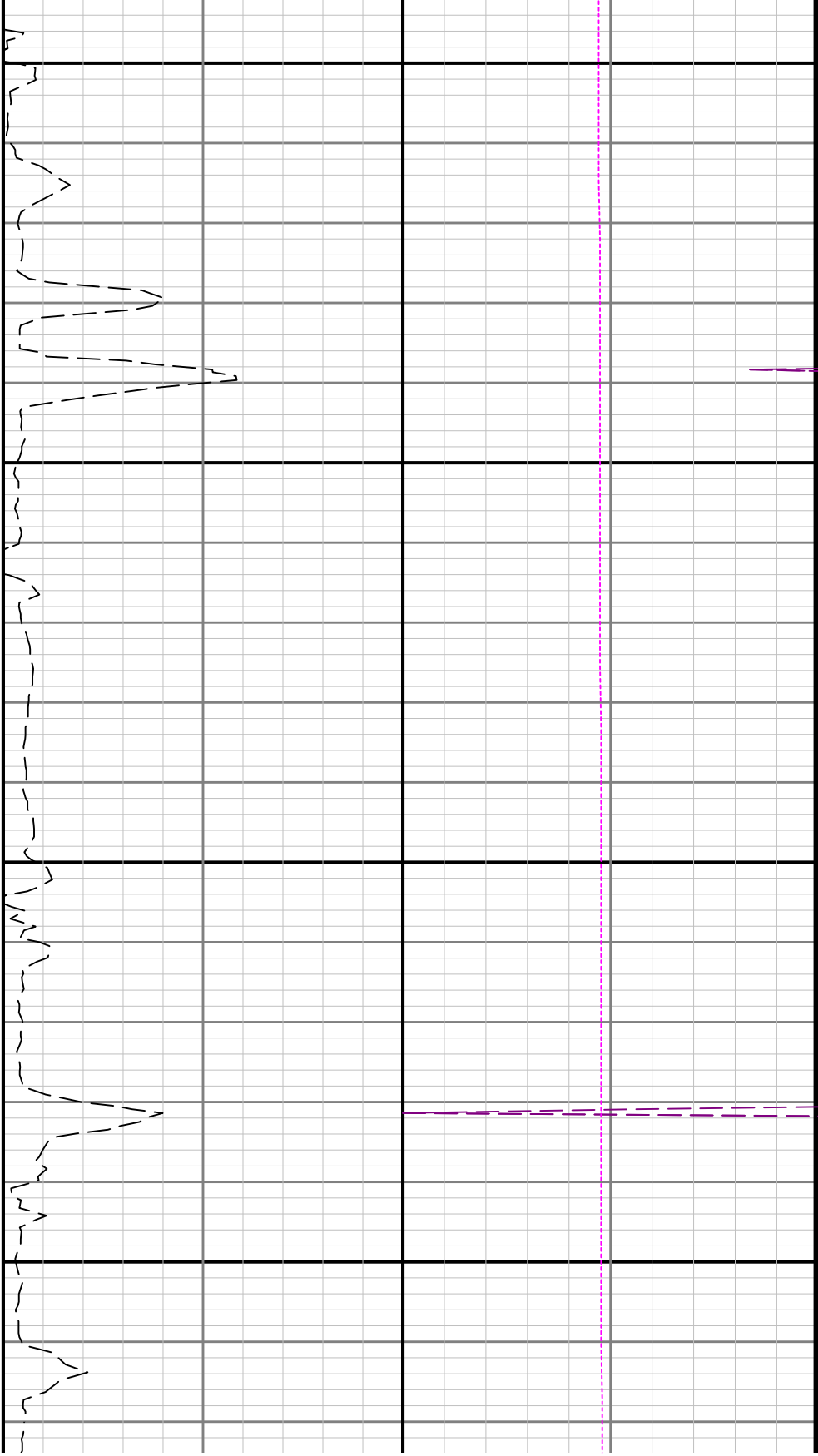


2900

3000

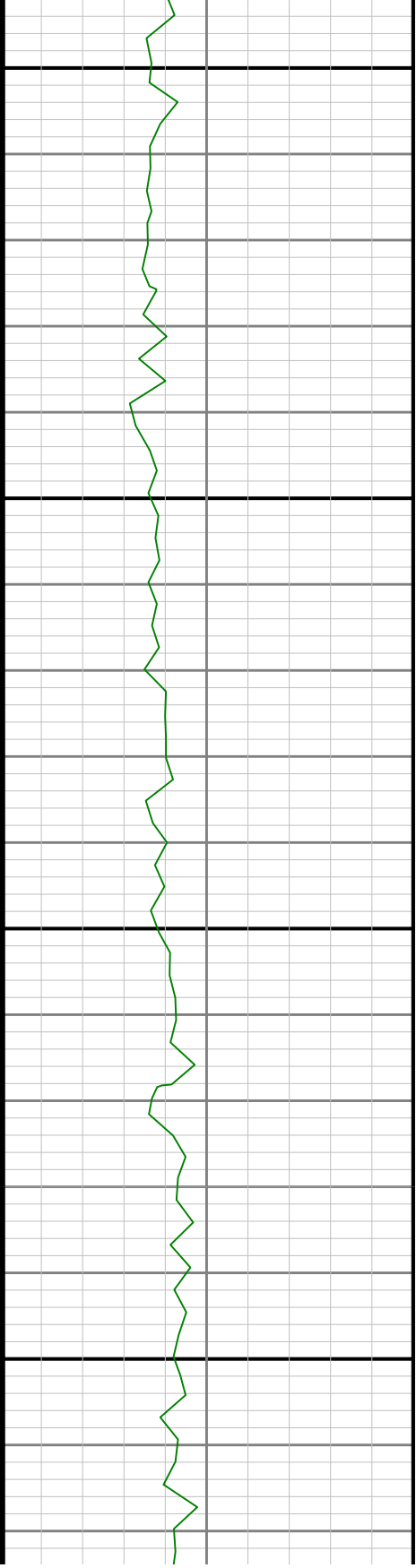


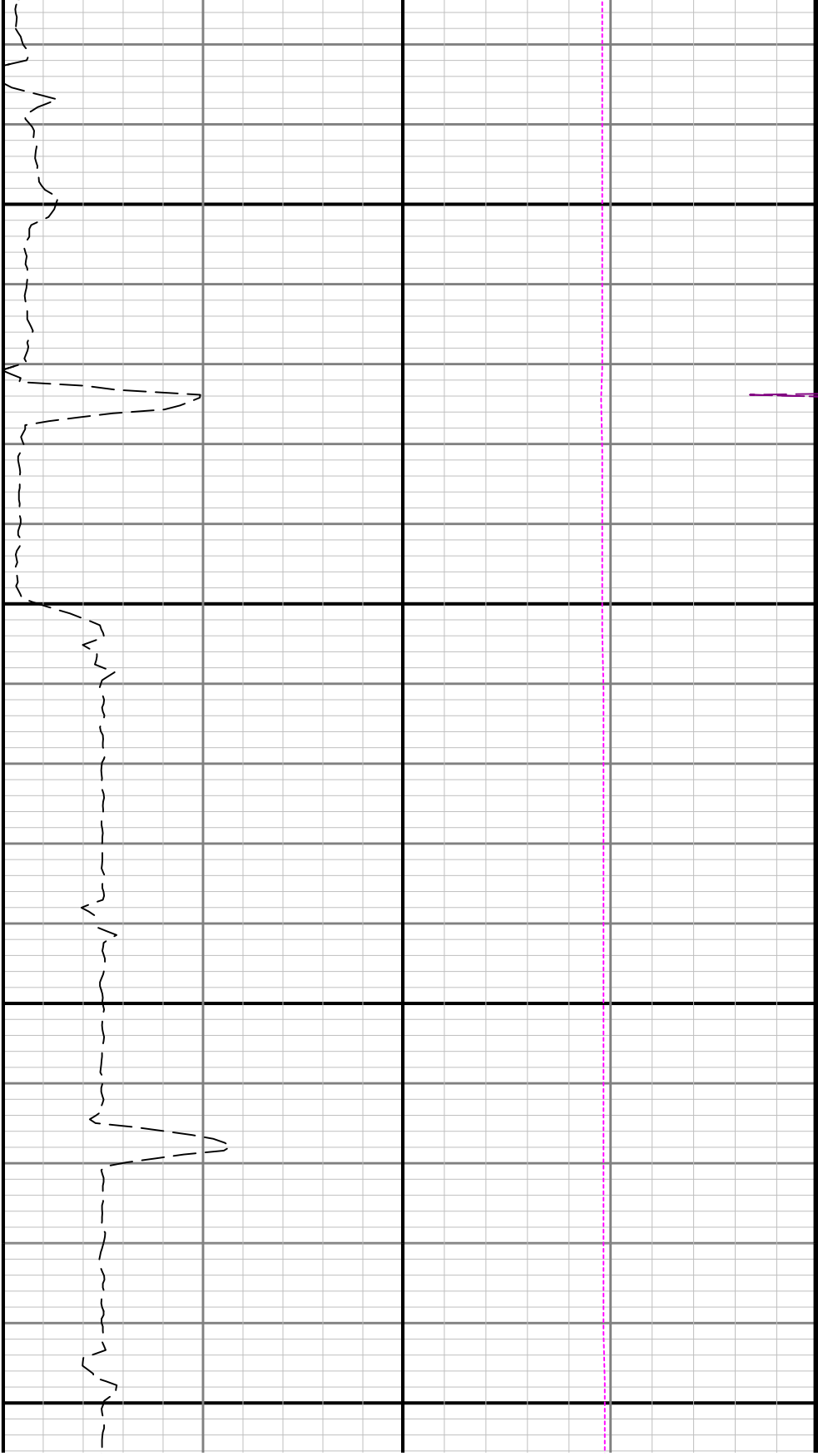




3200

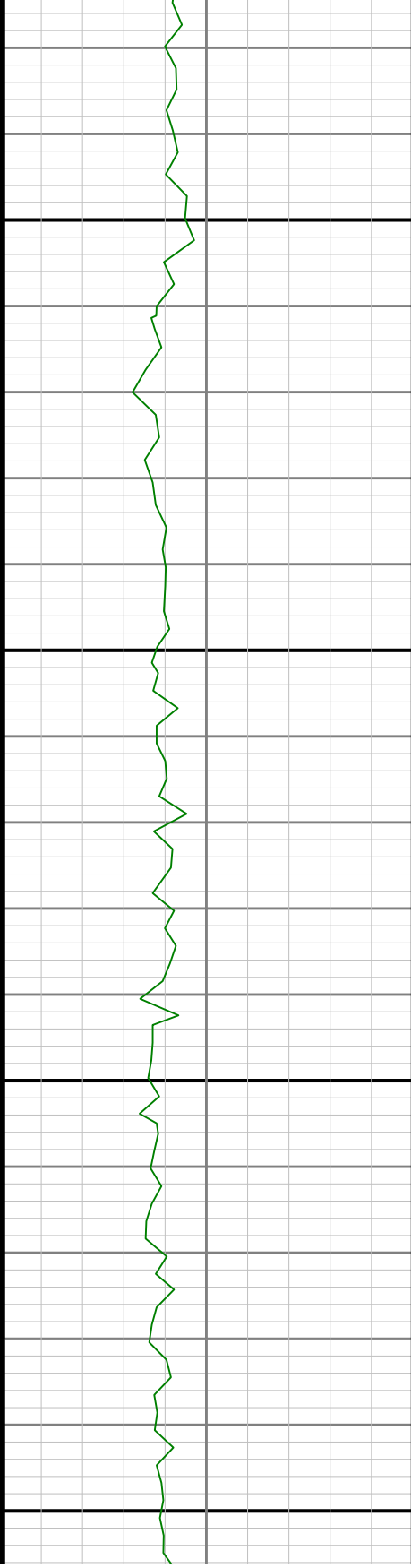
3300

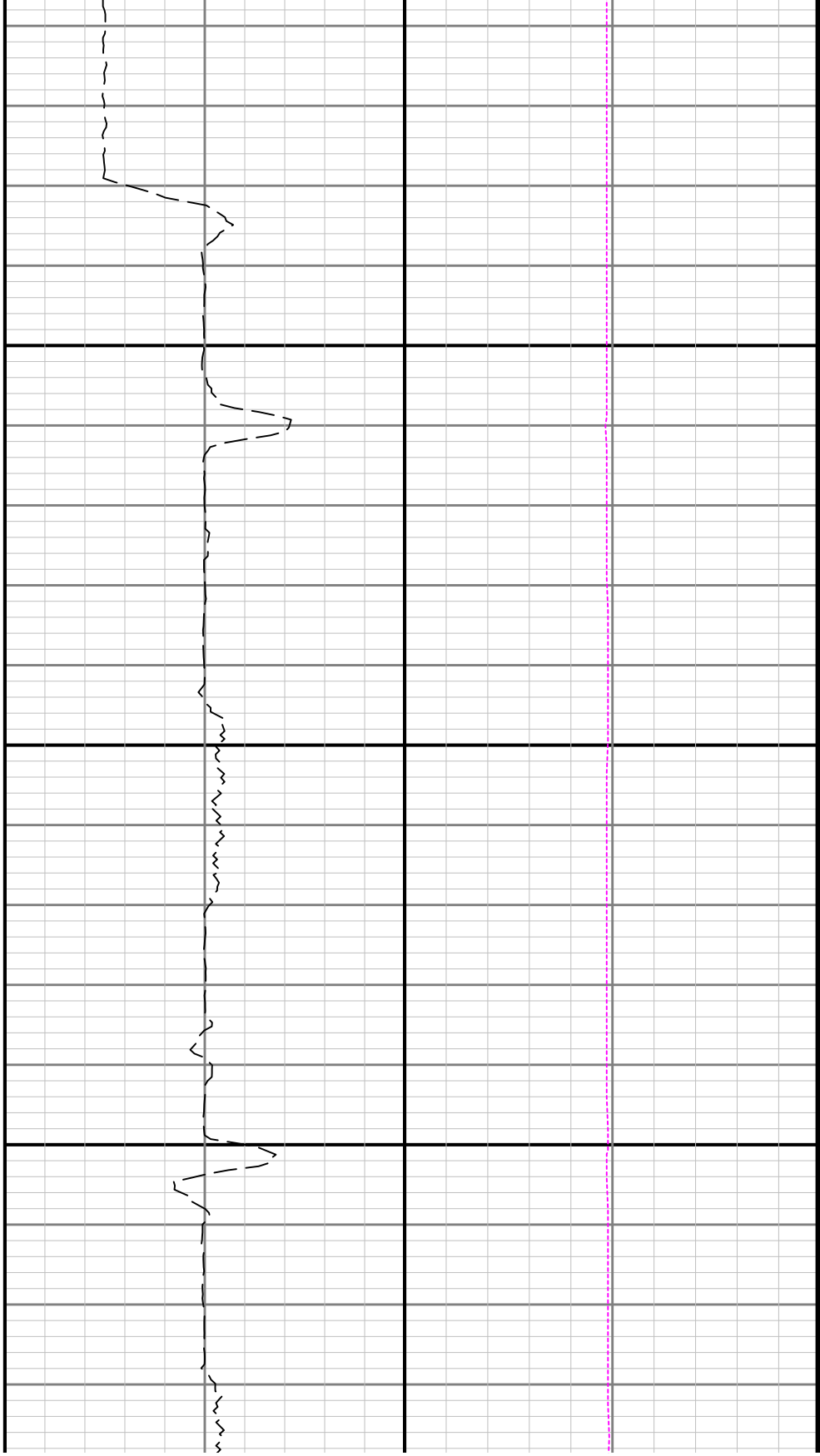




3400

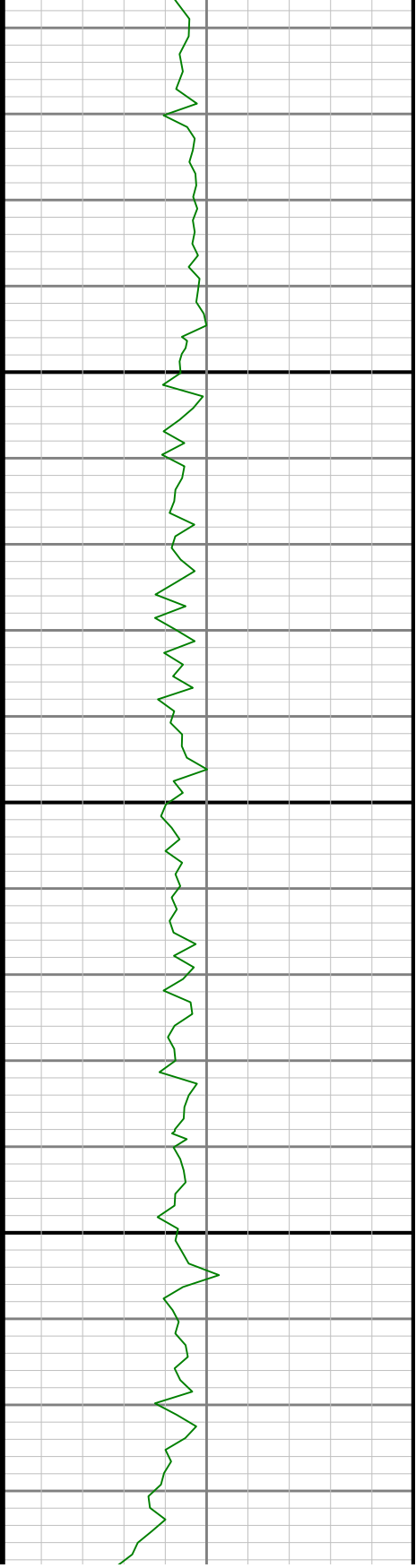
3500

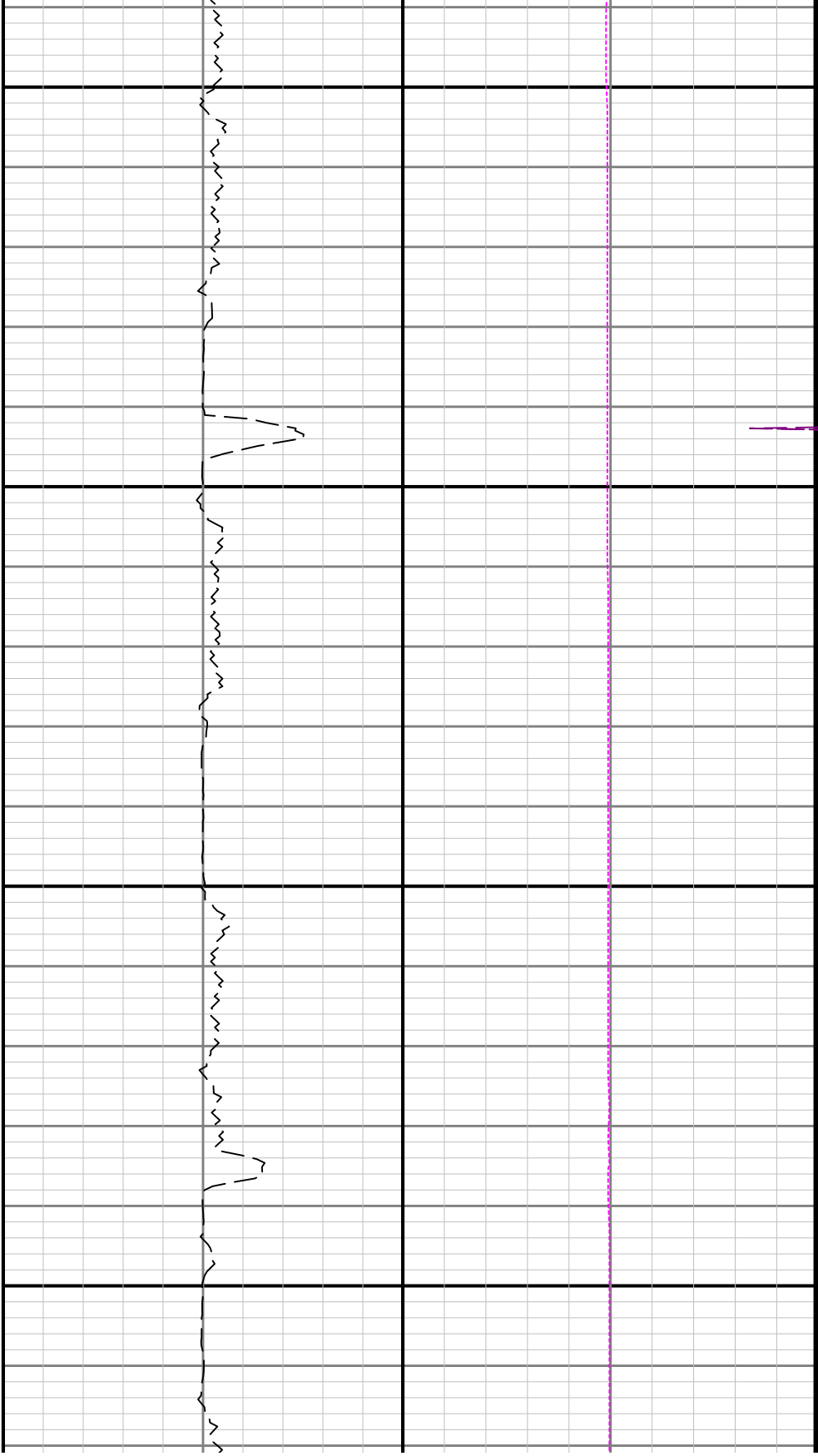




3600

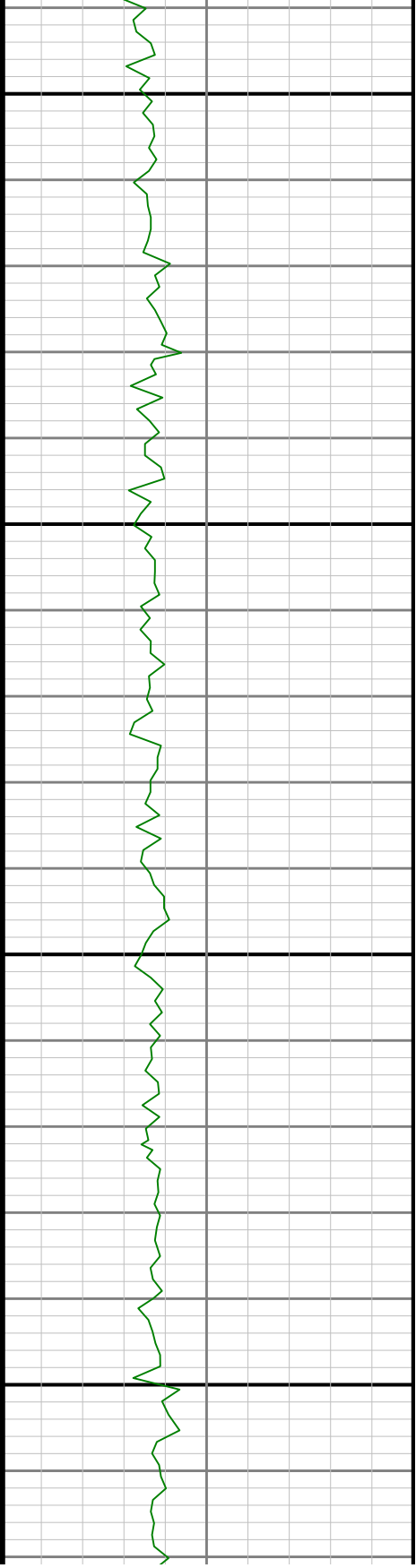
3700

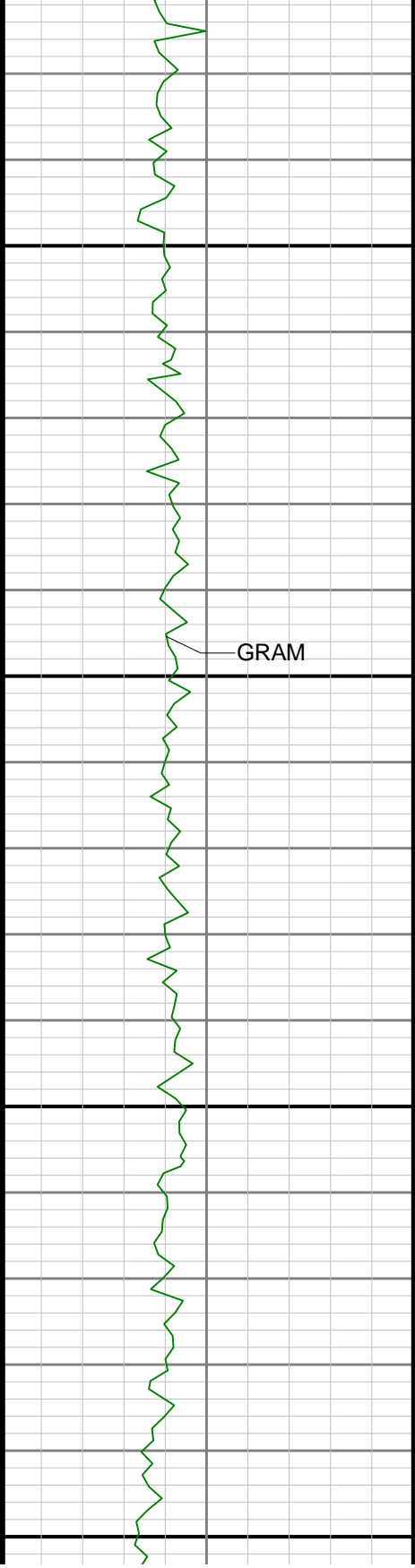




3800

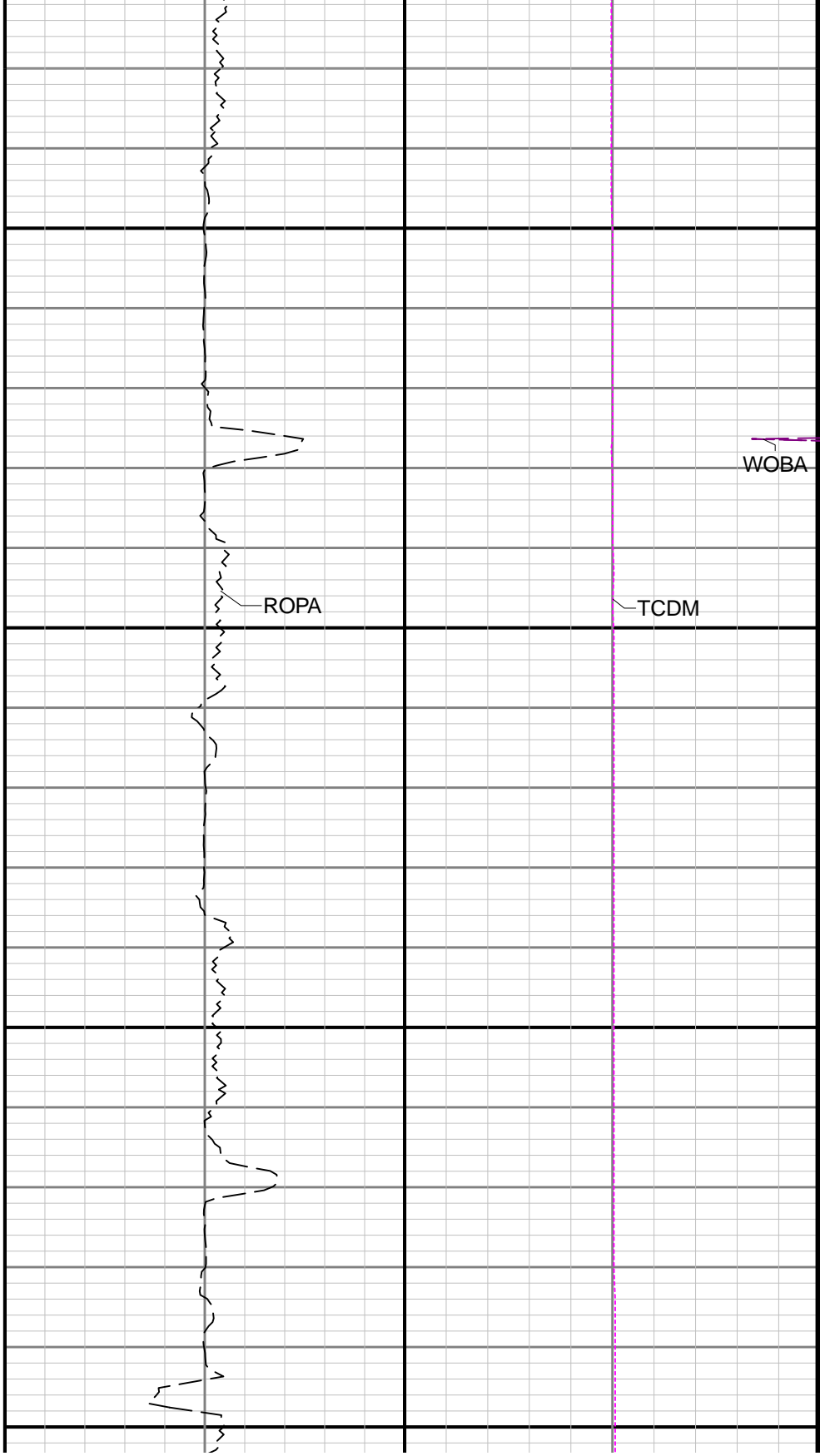
3900

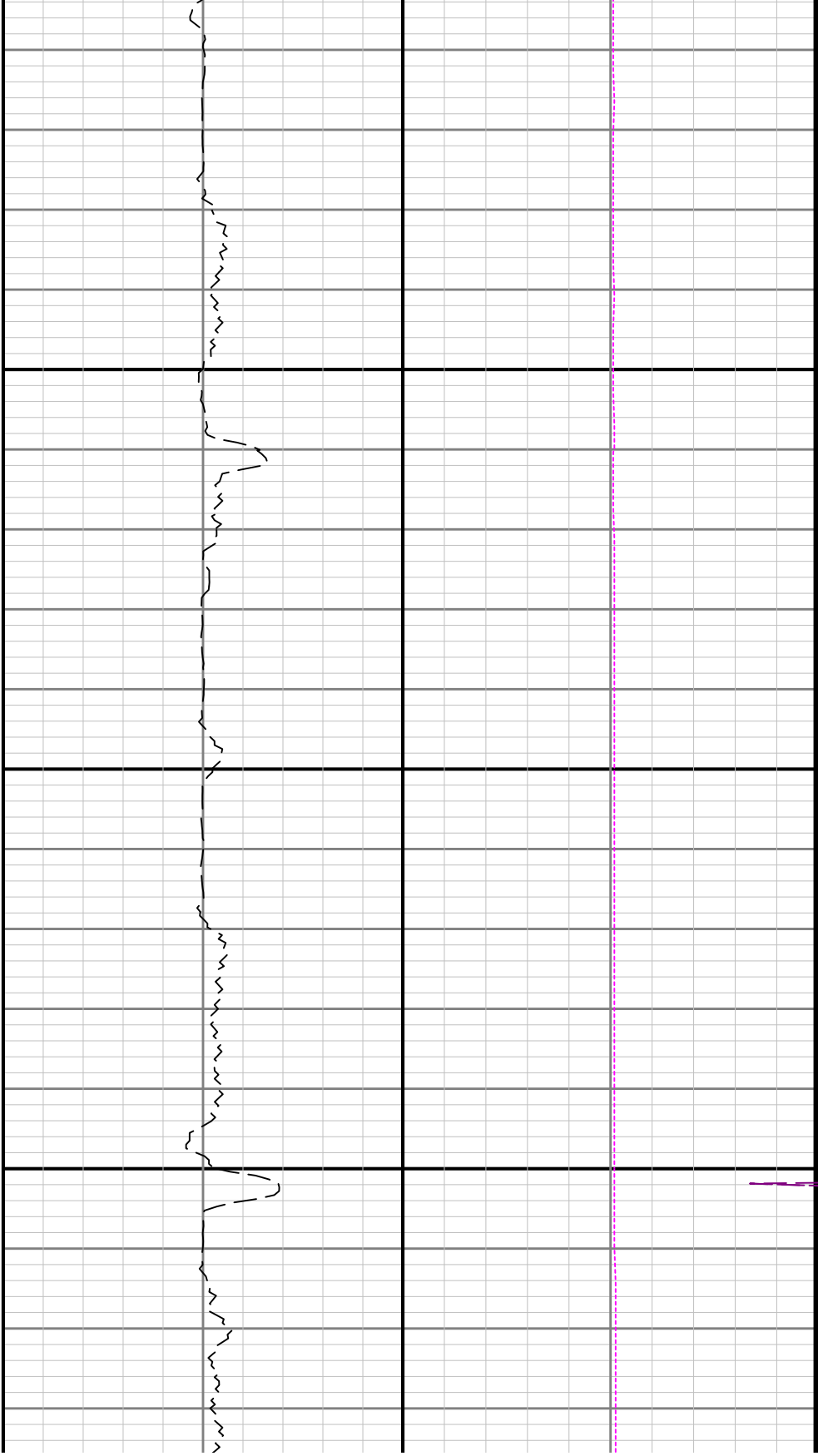




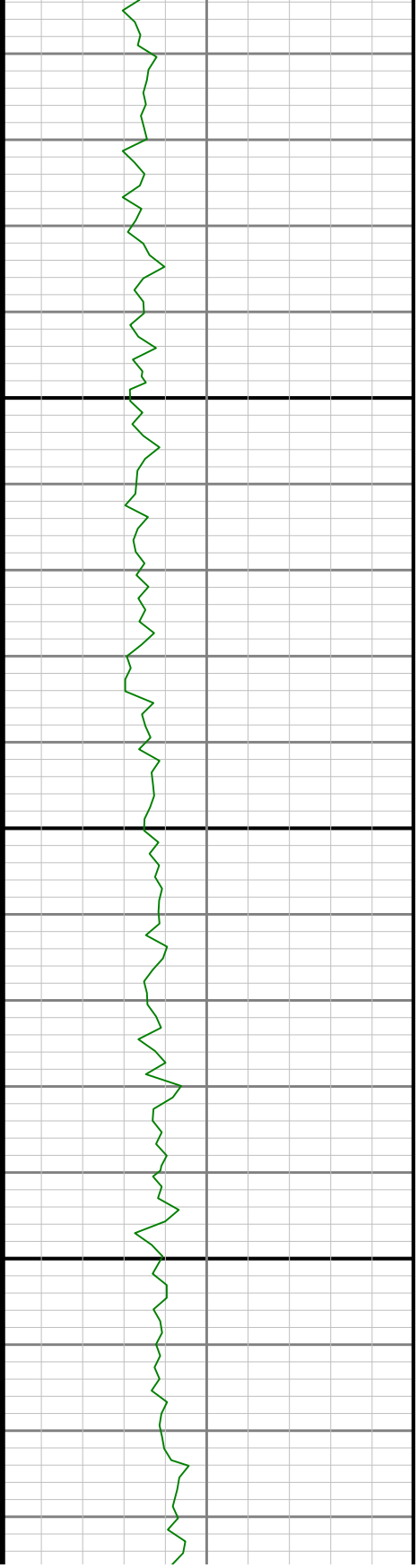
4000

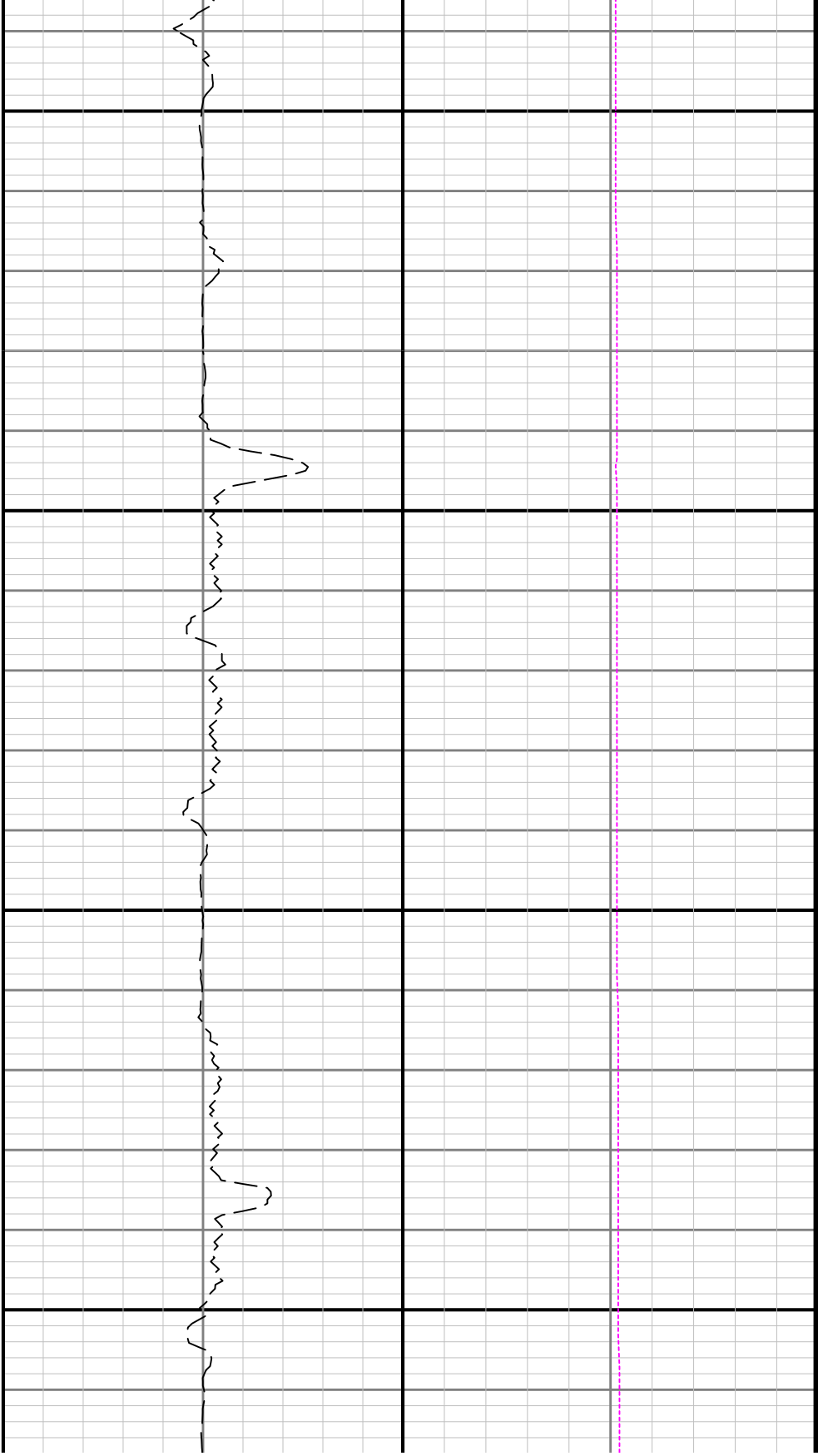
4100





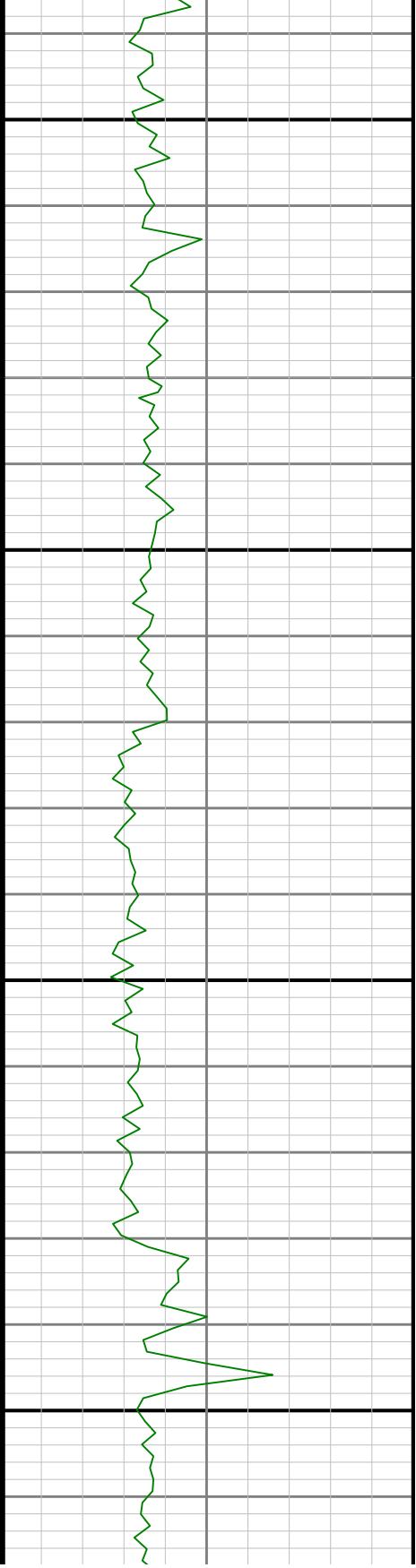
4200

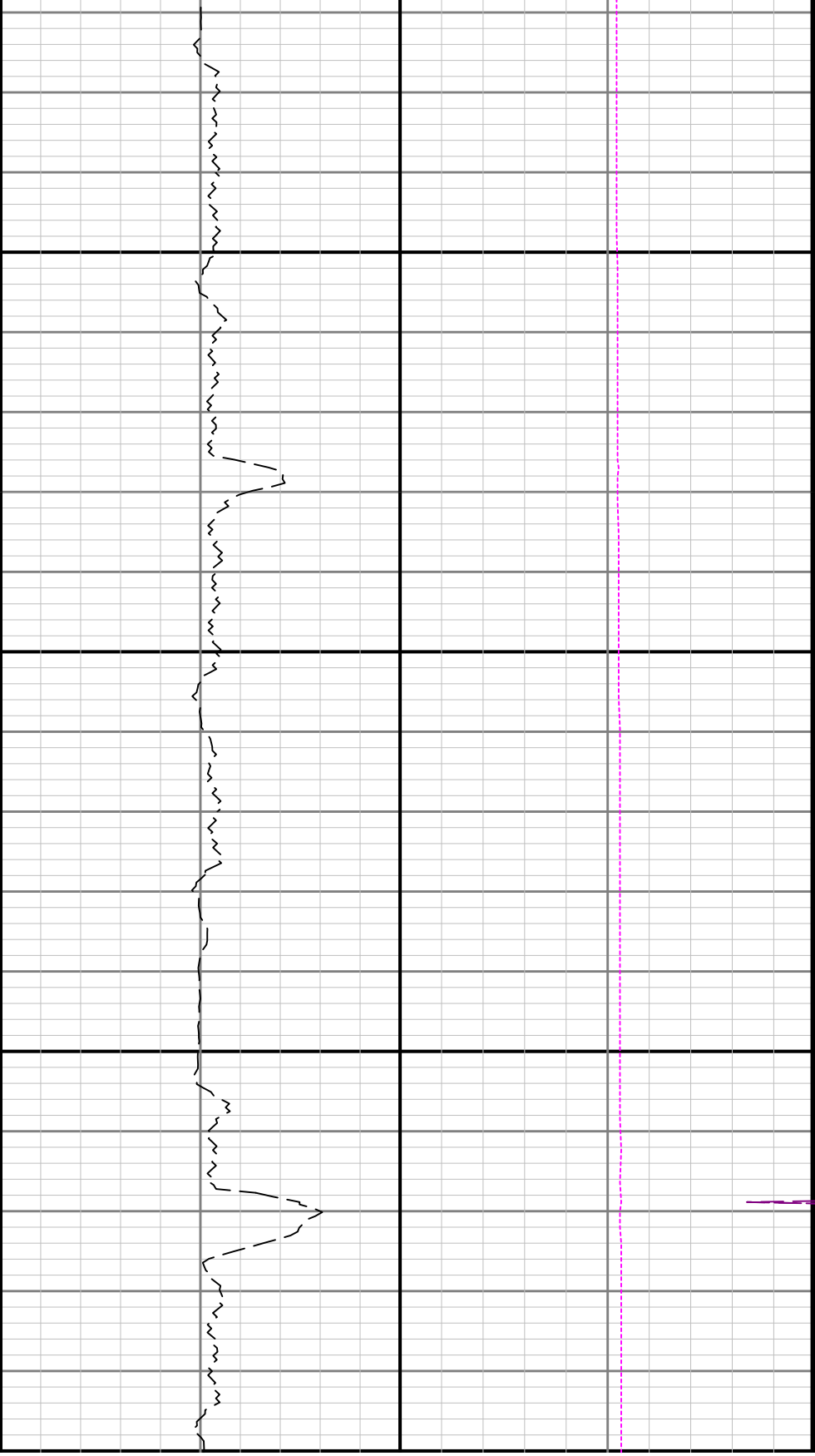




4300

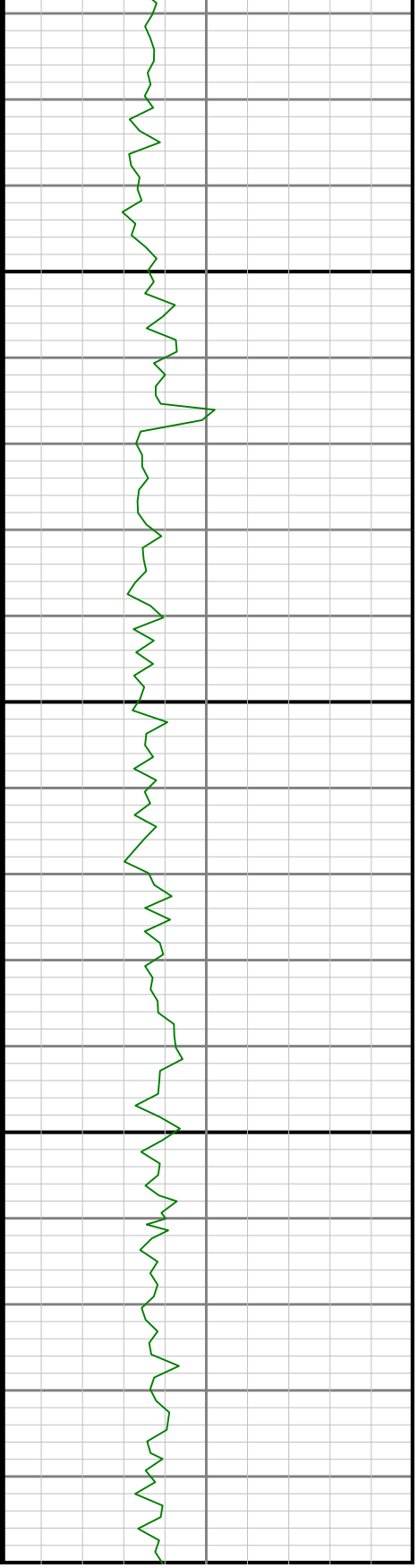
4400

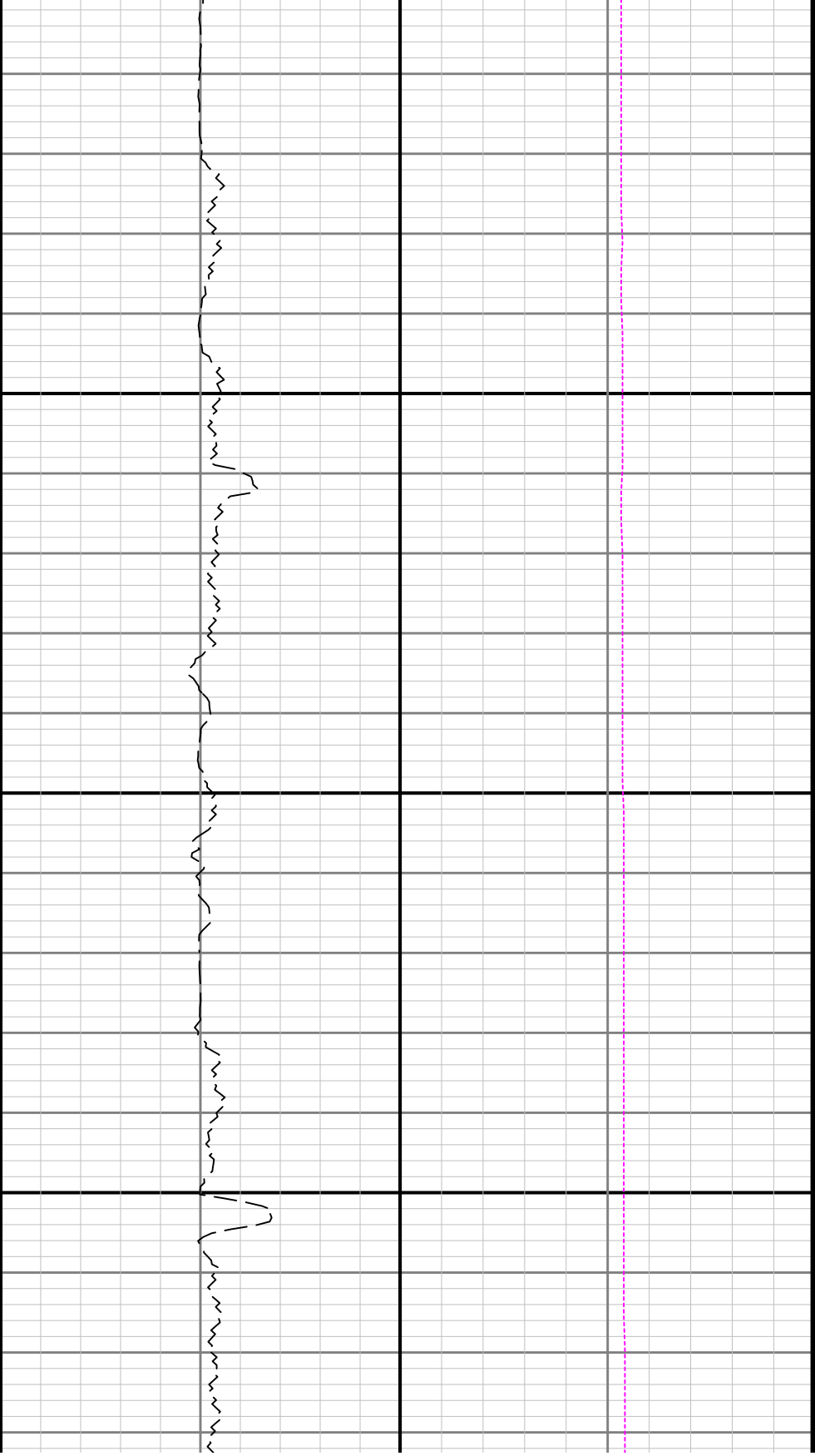




4500

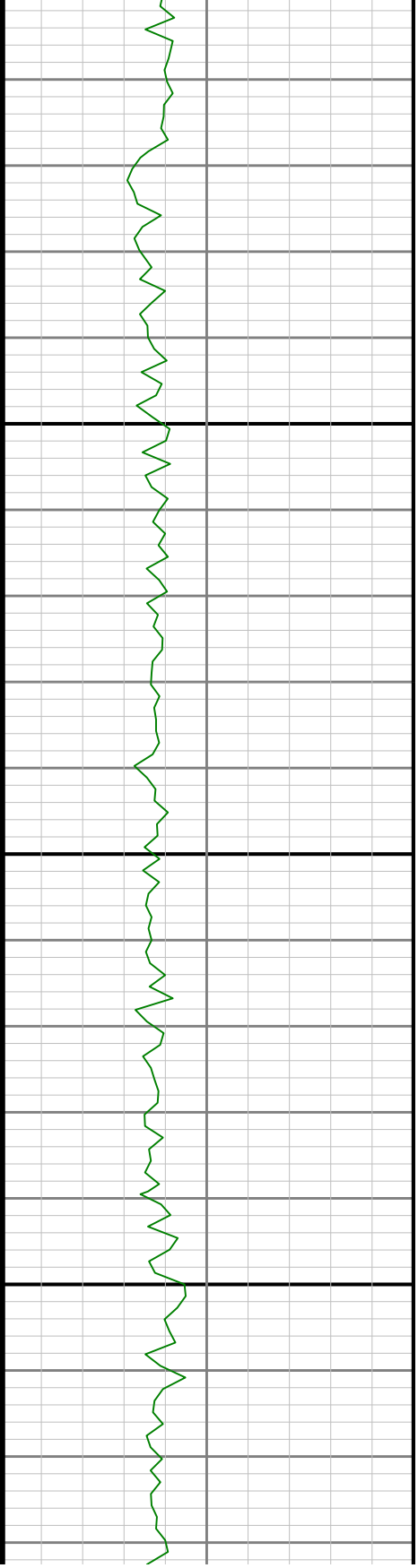
4600

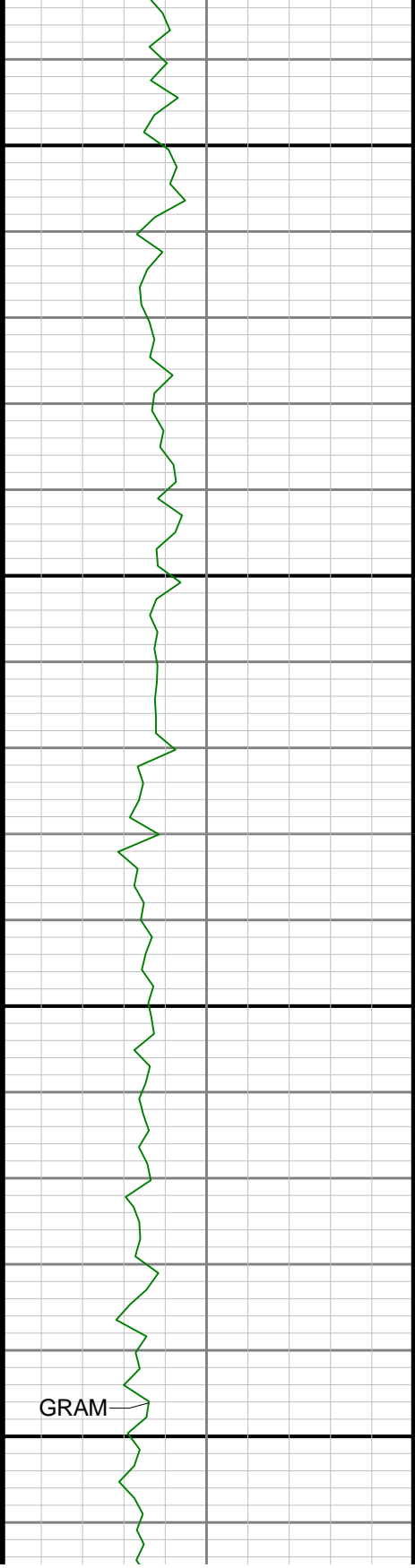




4700

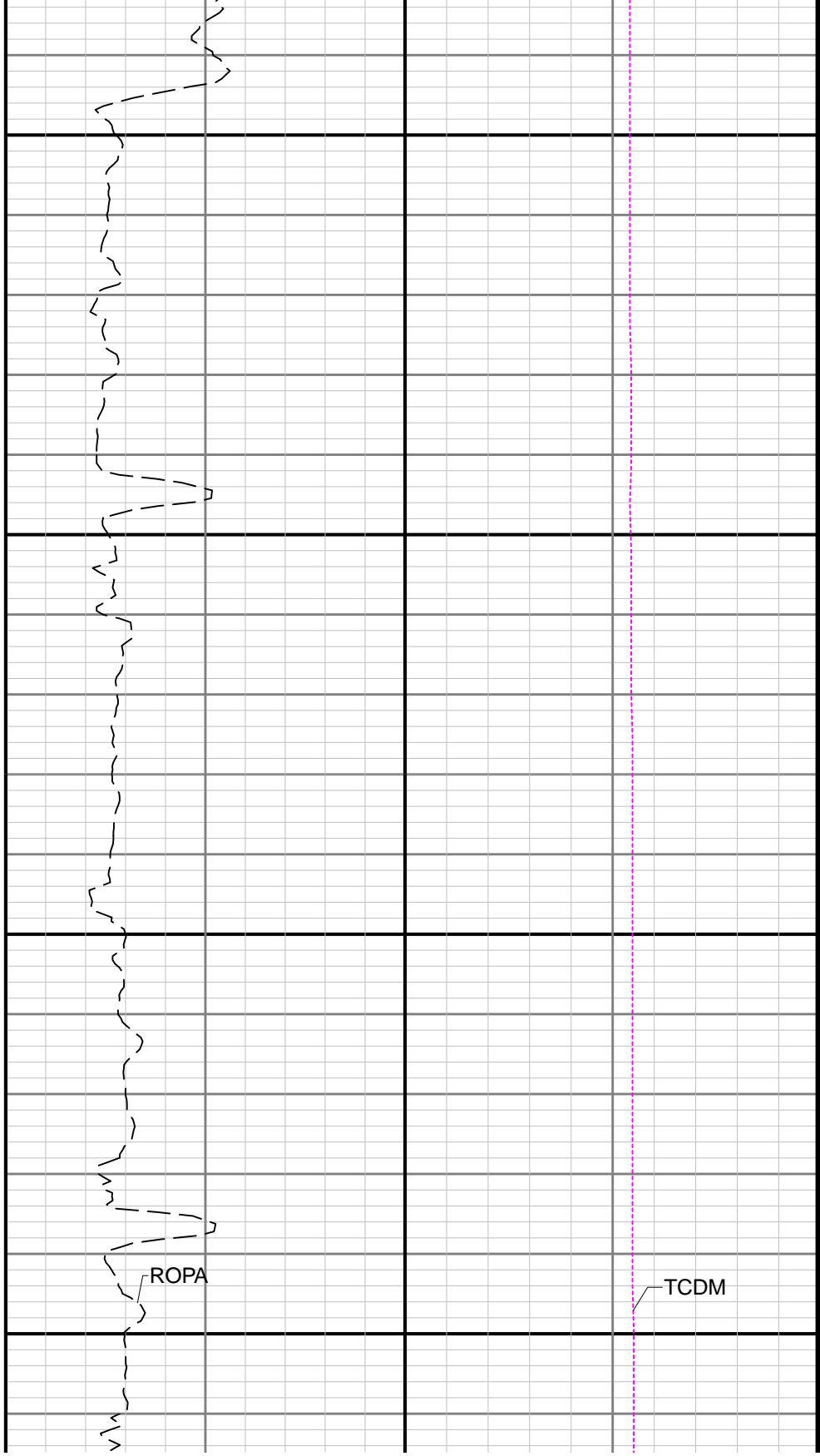
4800

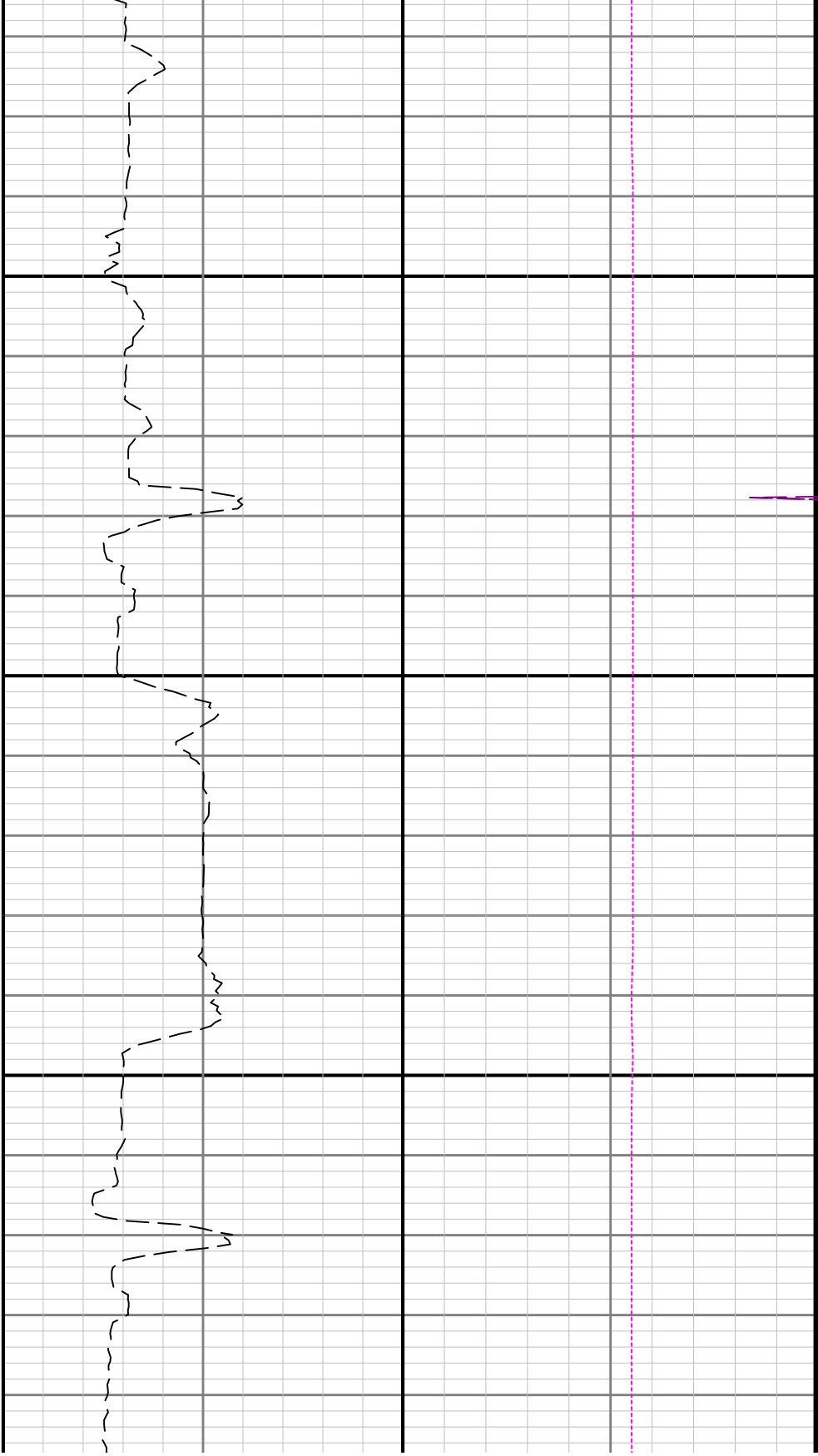




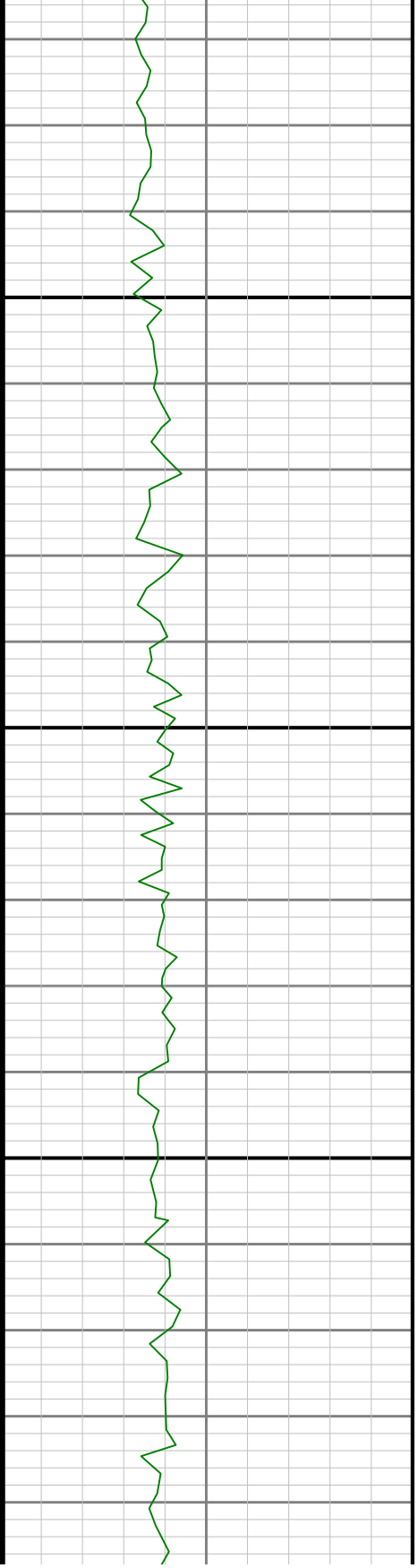
4900

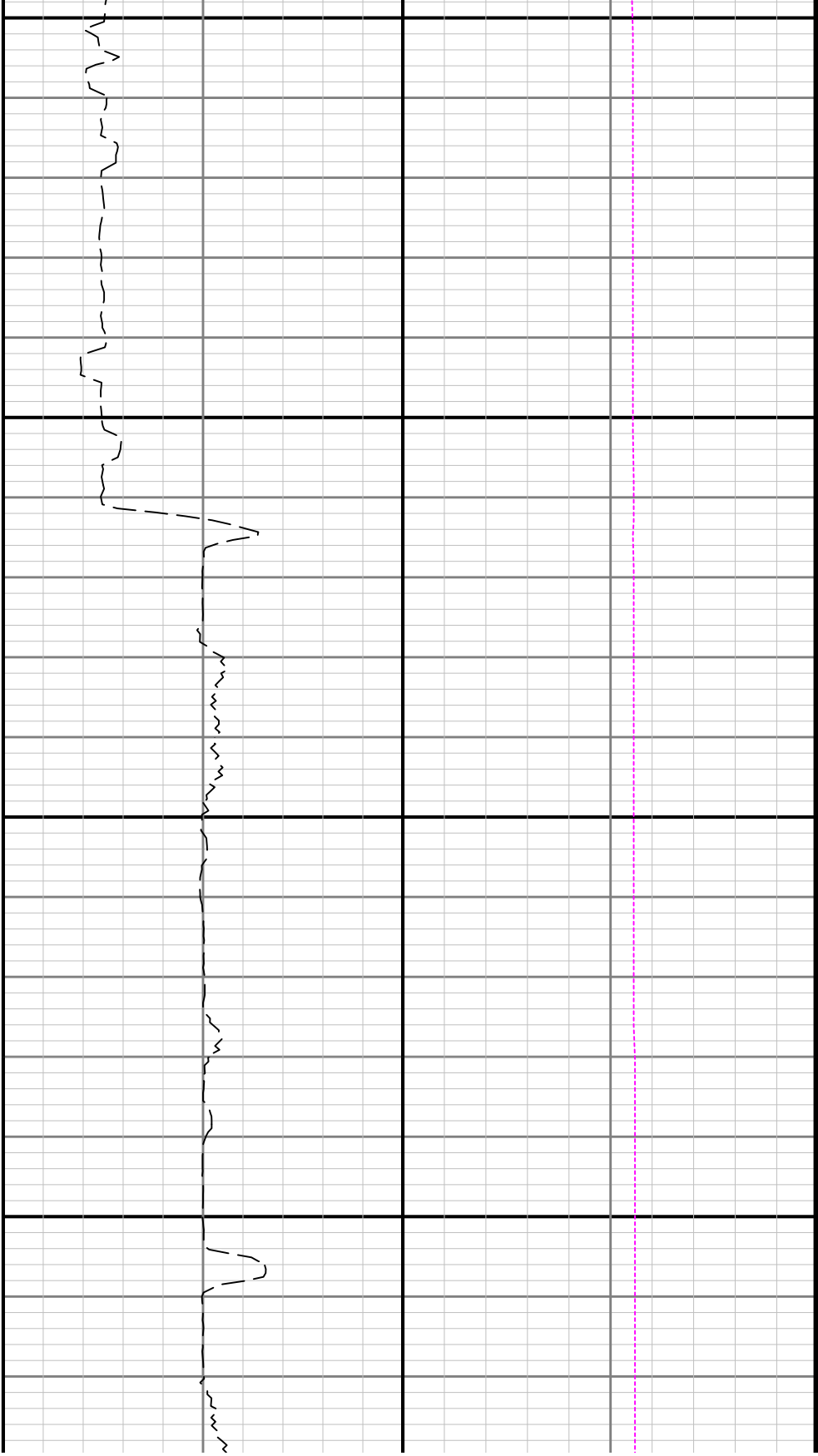
5000





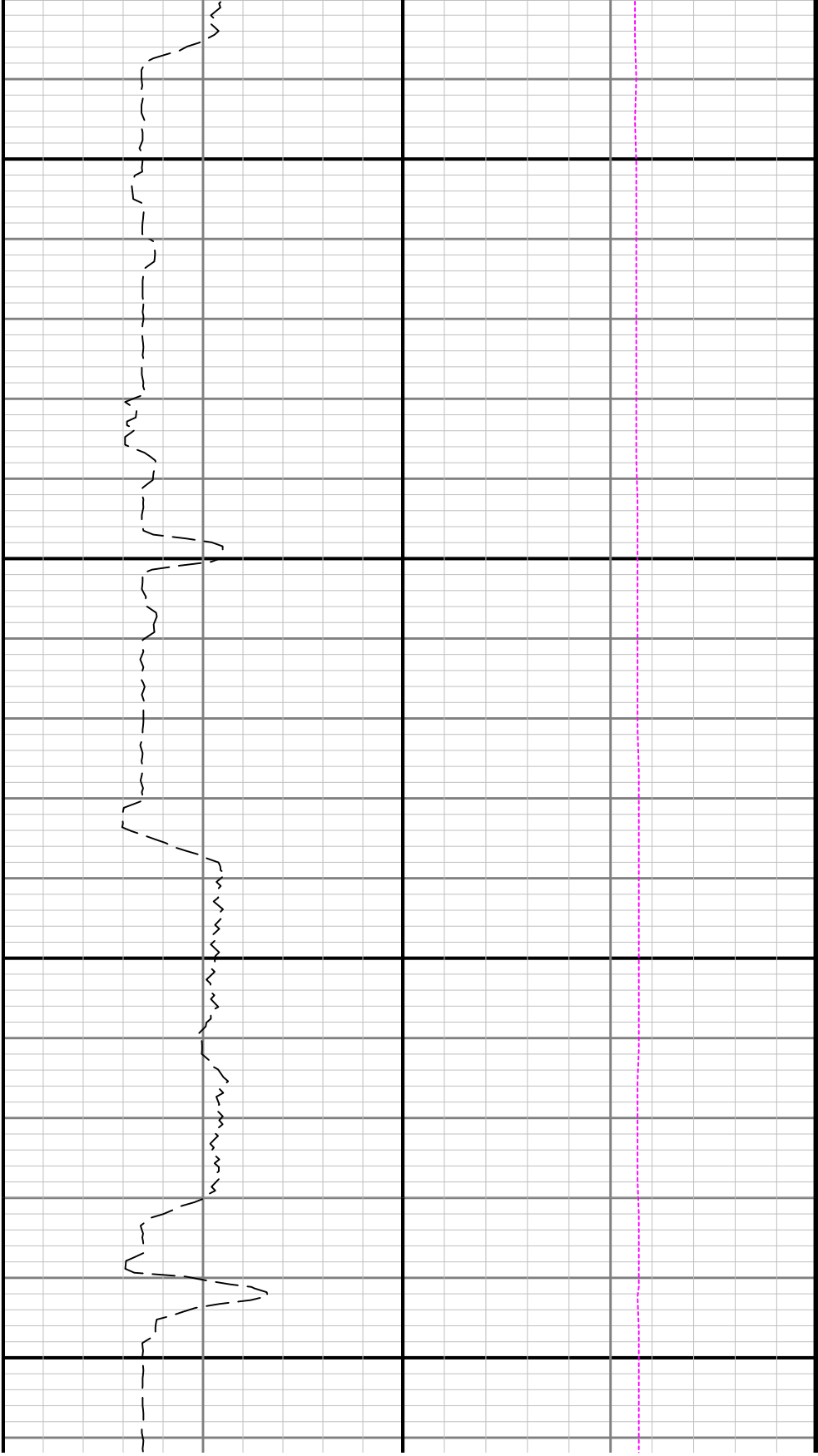
5100





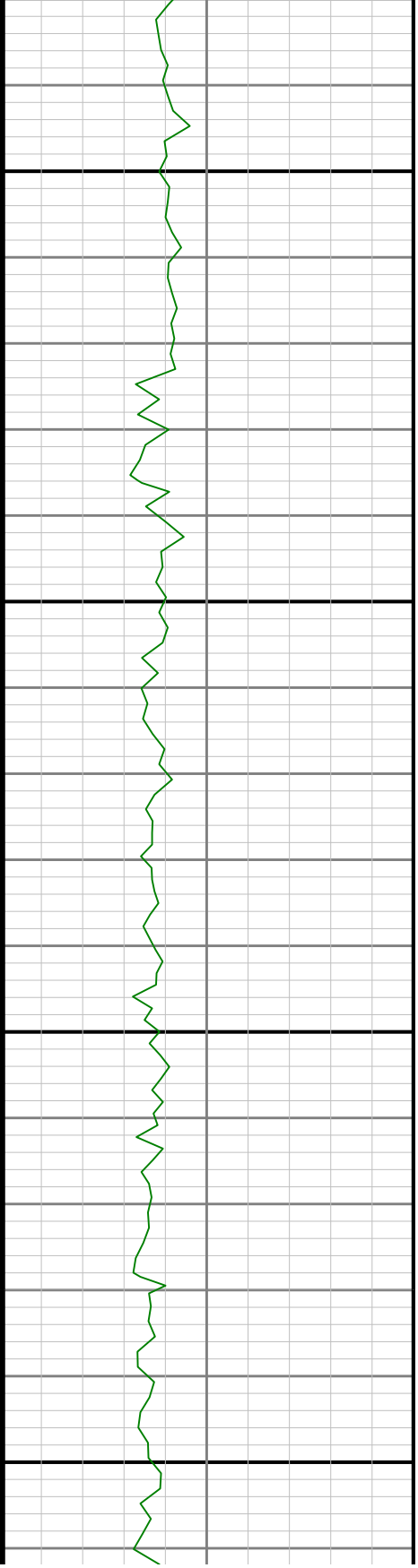
5200

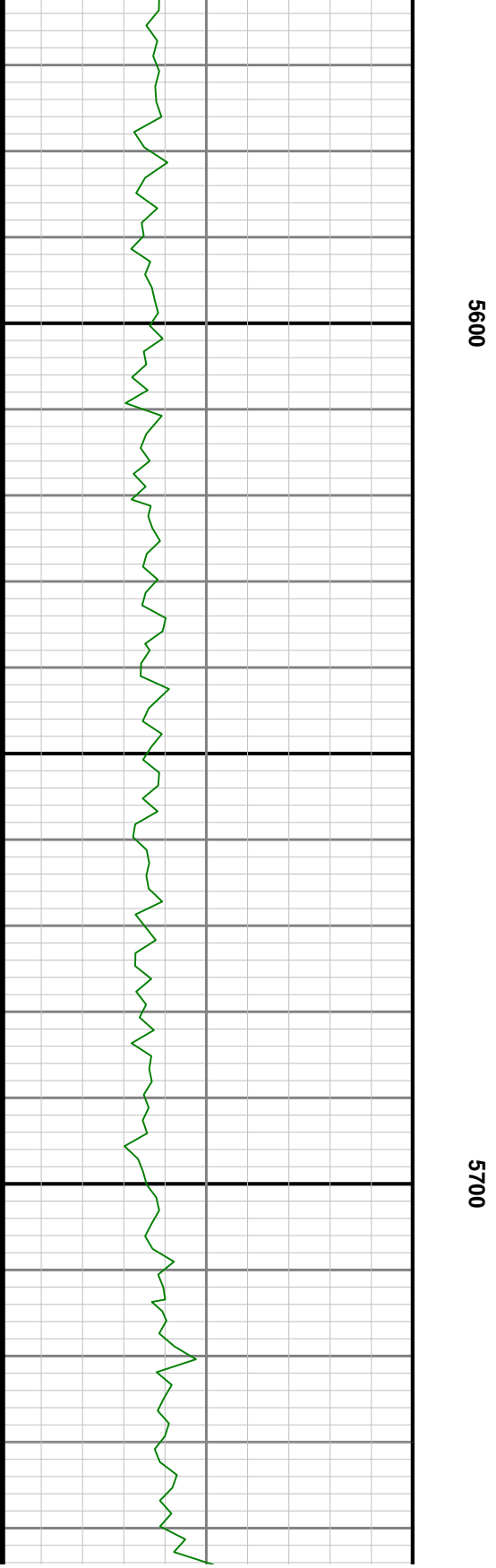
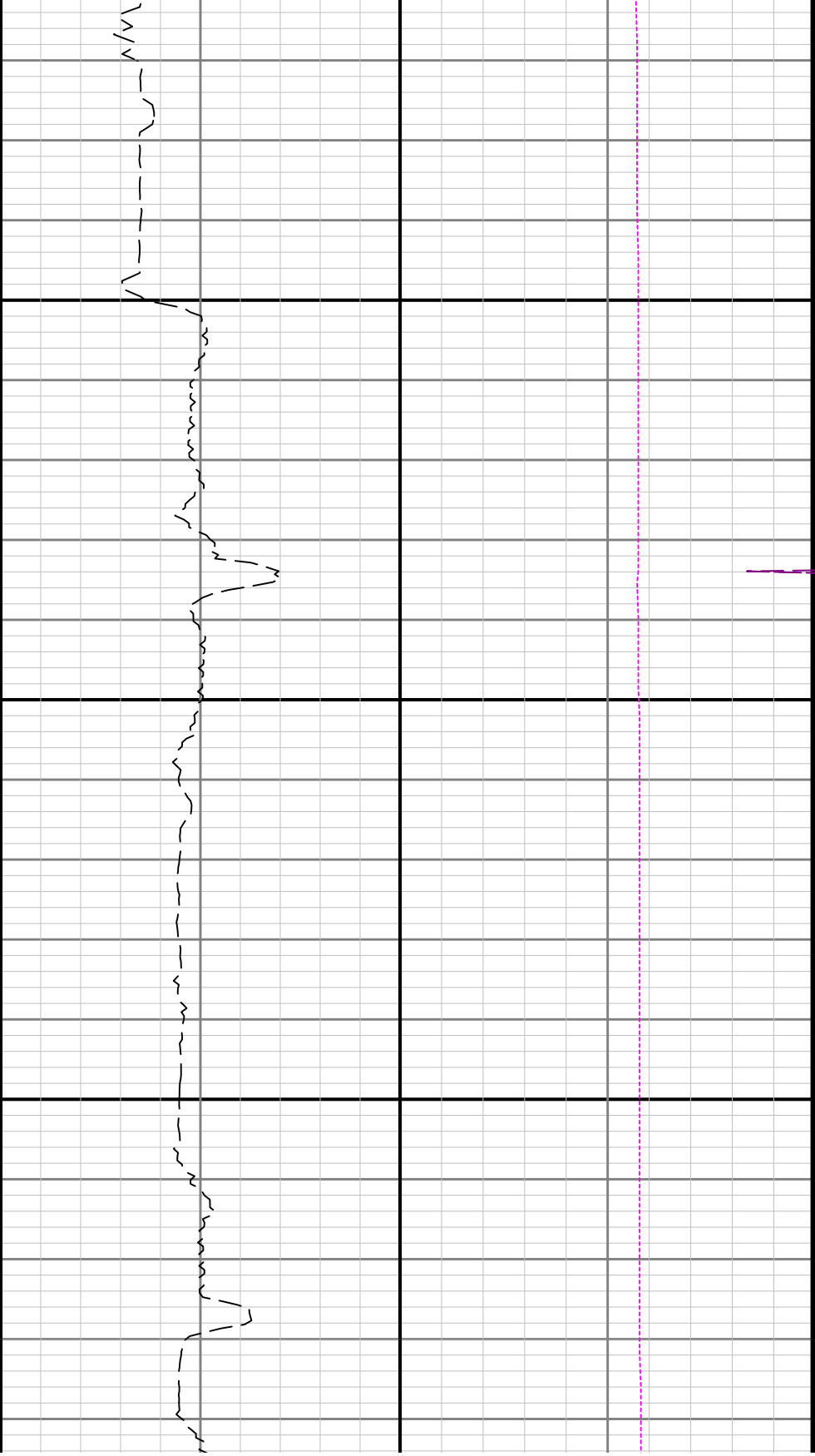
5300

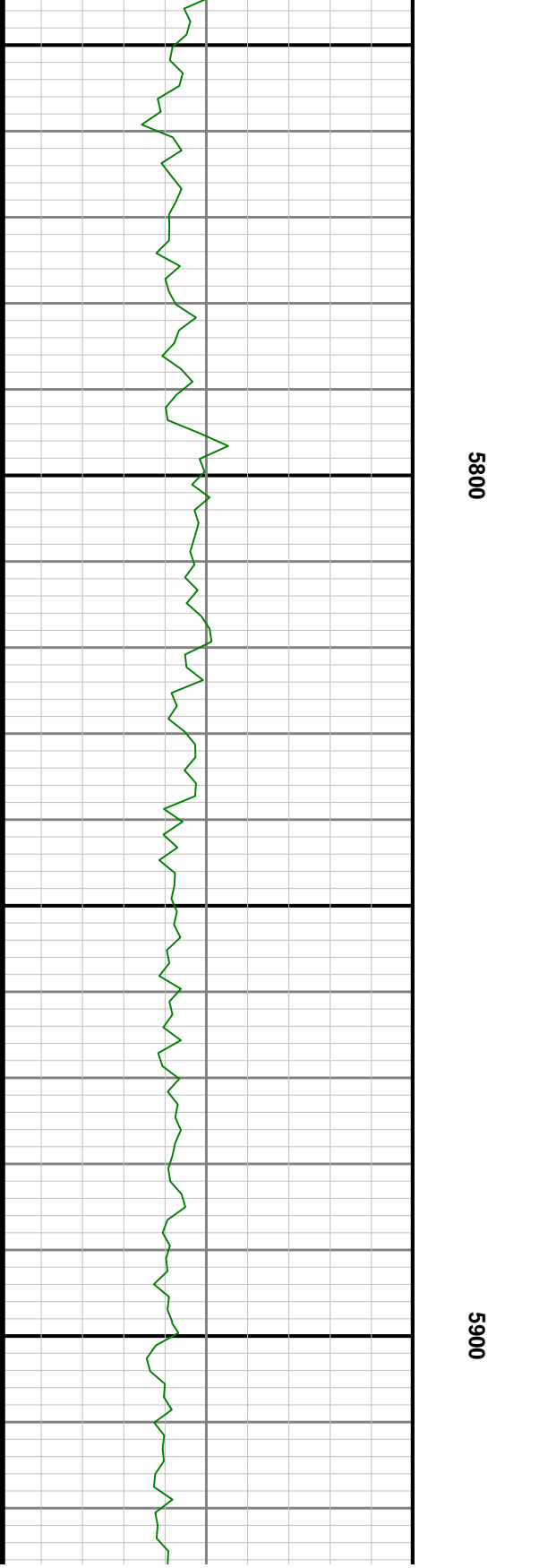
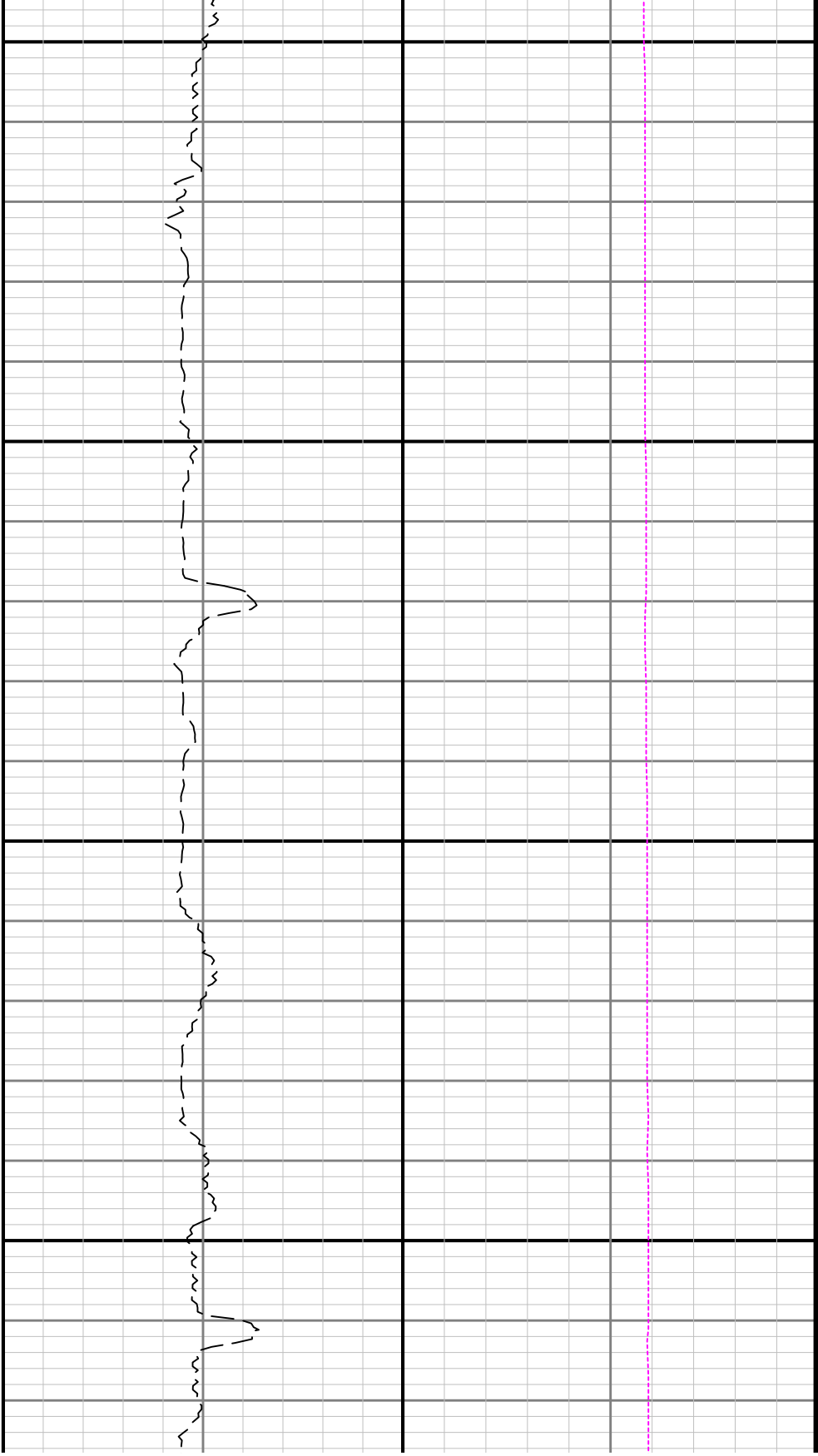


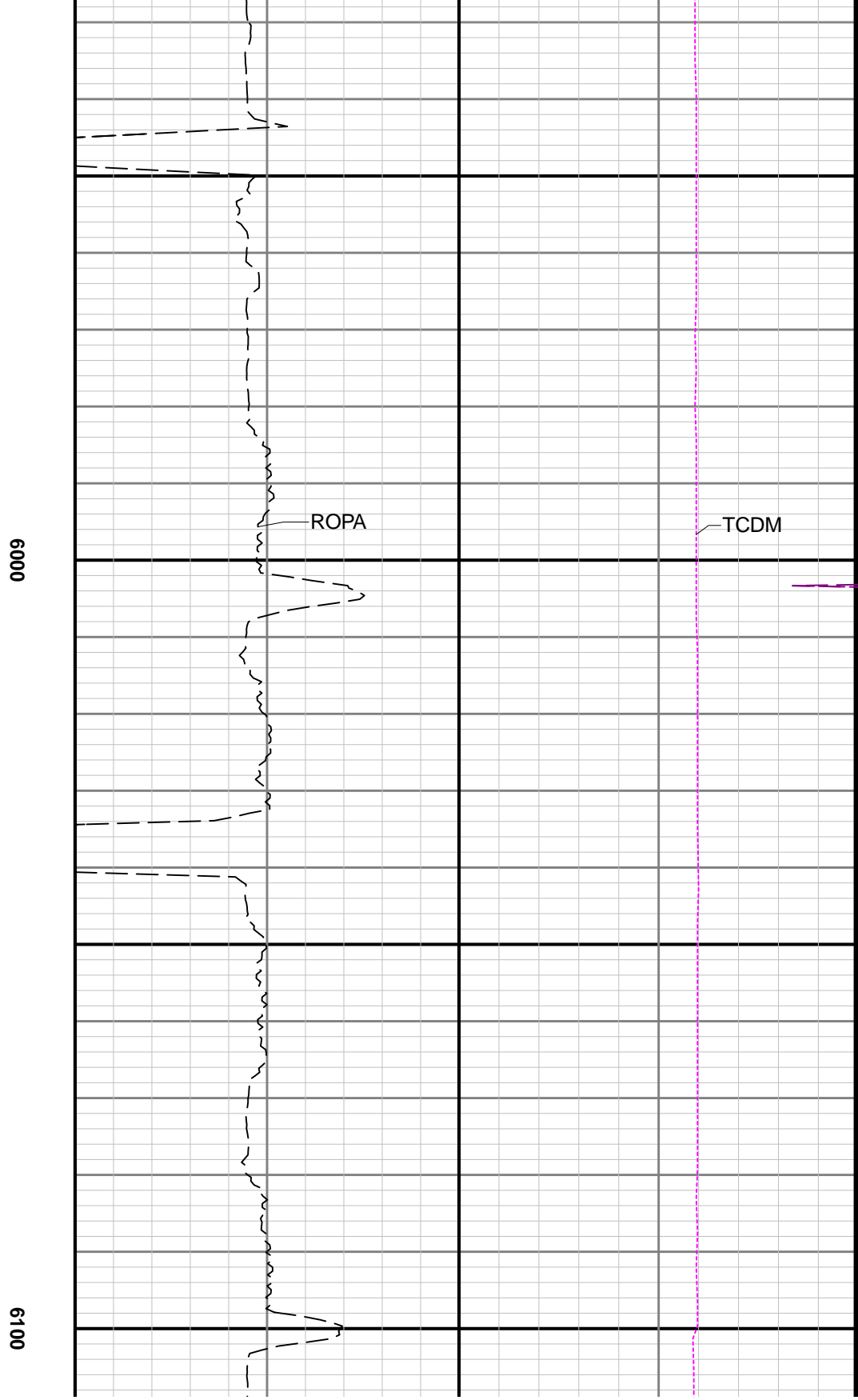
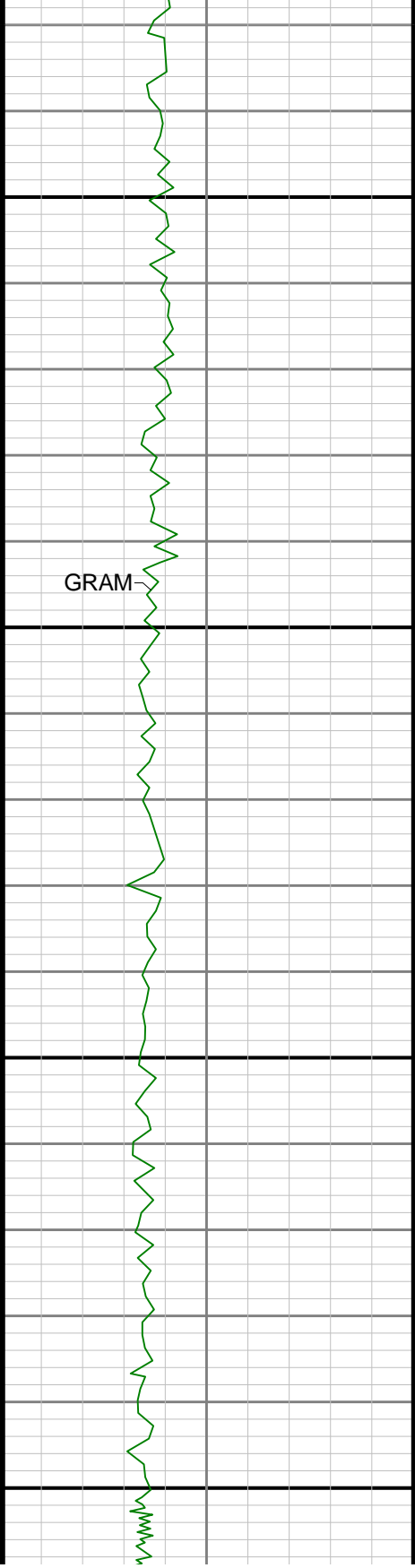
5400

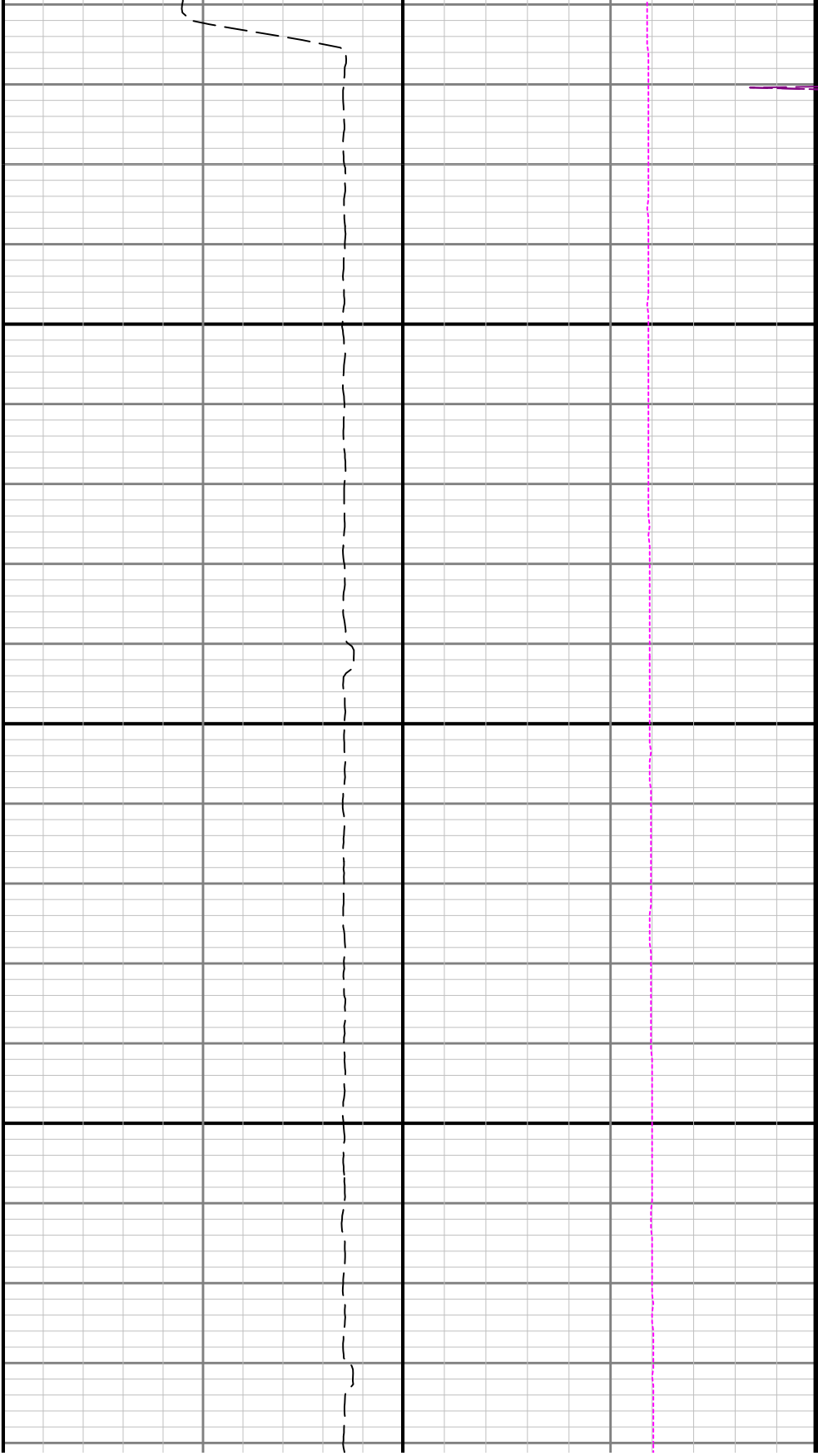
5500



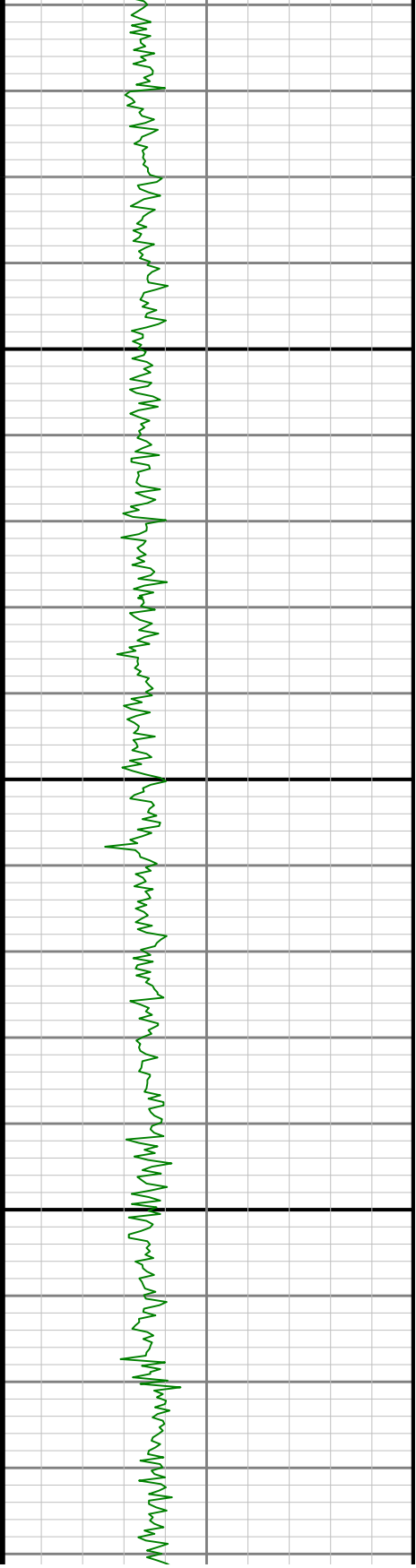


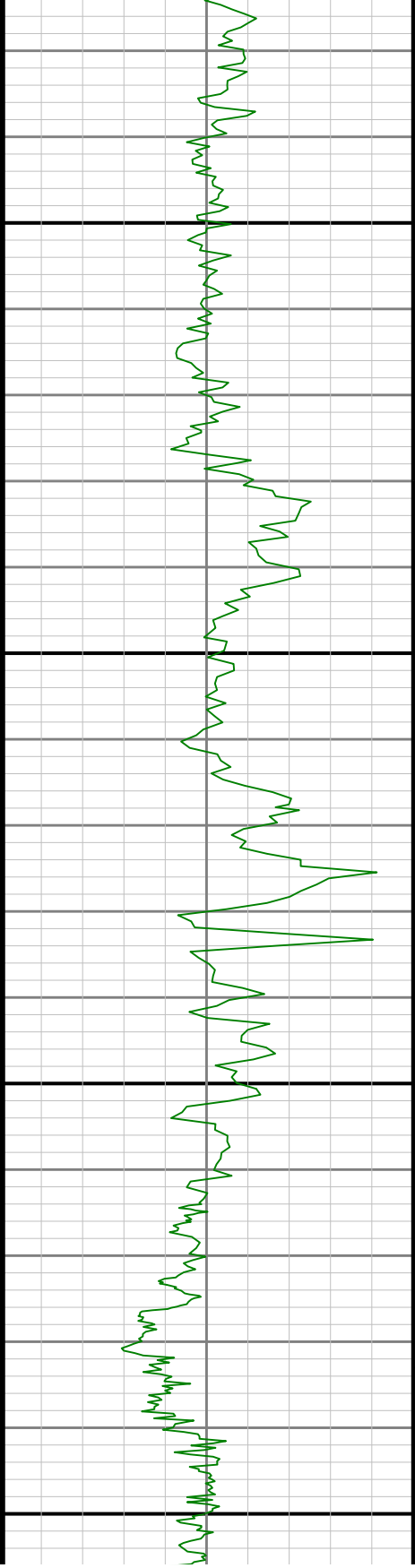






6200



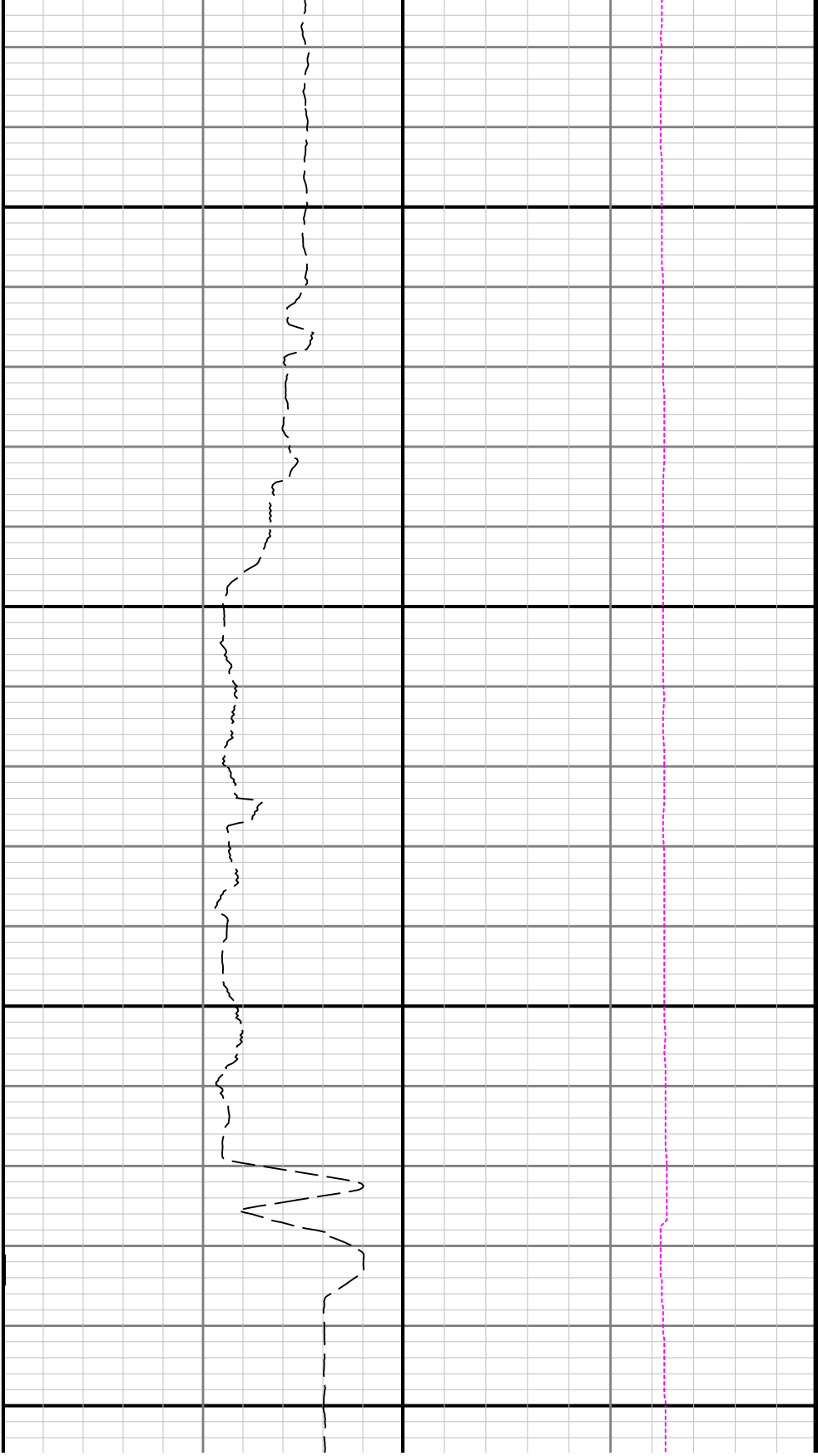


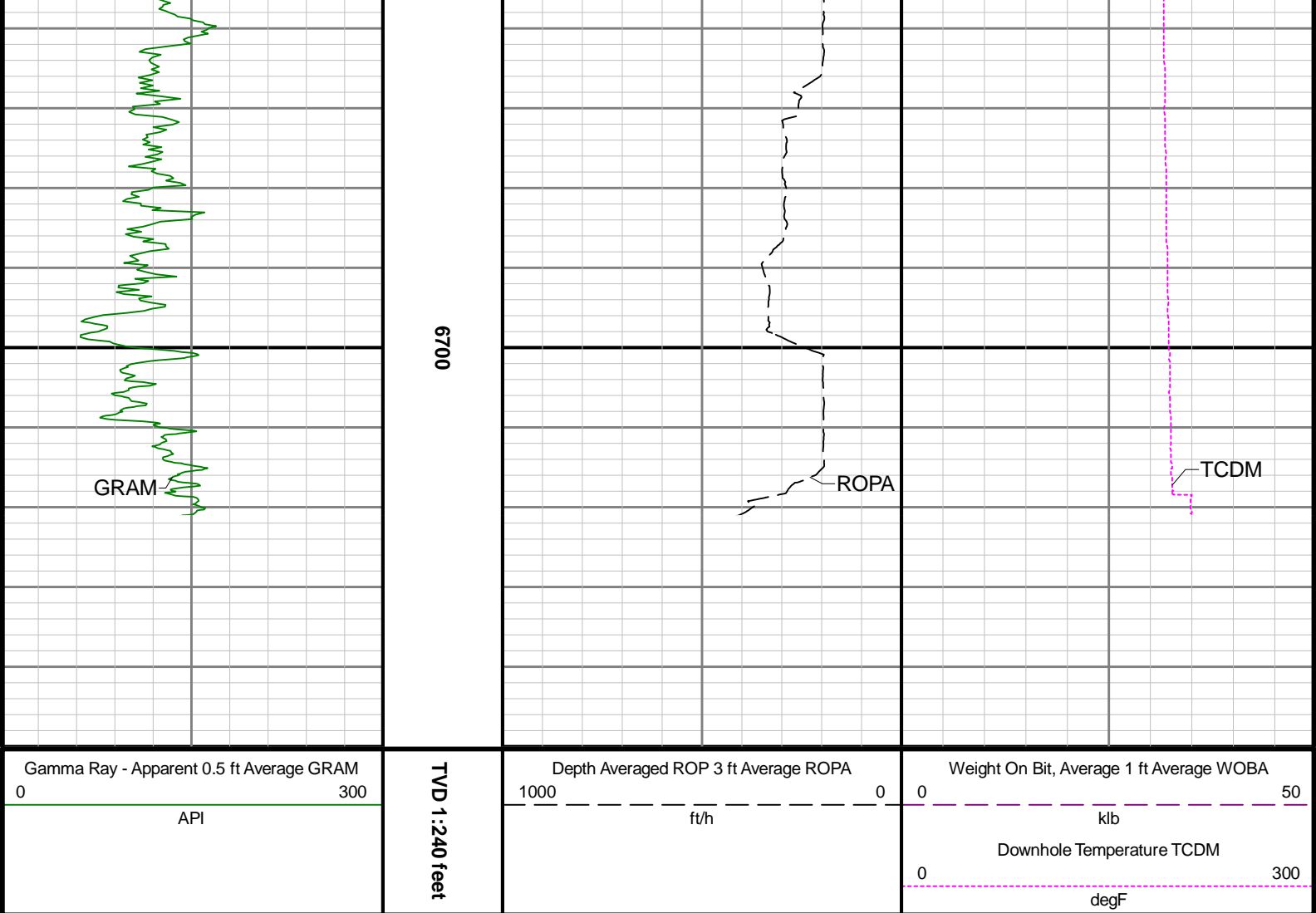
TD

6600

6500

R1<





Directional Survey Summary													
Latitude:		40° 11' 26.863" N						Longitude:		104° 28' 52.068" W			
North Reference:		Grid						Drill Depth Zero:		Rig Floor			
Vertical Datum is:		Mean Sea Level						Vertical Datum to DDZ: (ft)		4820.00			
Vertical Section North: (ft)		0.00						Vertical Section East: (ft)		0.00			
Vertical Section Azimuth: (deg)		184.70											
Grid Convergence: (deg)		-0.66						Magnetic Declination: (deg)		7.92			
Total Correction: (deg)		7.26						TVD Calculation Method:		Minimum Curvature			
Magnetic Correction:		Off						Local Magnetic Field: (nT)		52003			
Local Magnetic Dip Angle: (deg)		66.57						Local Gravity Field: (m/s2)		9.800			
Tie-In / Projection	Measured Depth (ft)	Inclination (deg)	Azimuth (deg)	Temperature (degF)	North (ft)	East (ft)	True Vertical Depth (ft)	TVD Subsea (ft)	Vertical Section (ft)	Course Length (ft)	Dog Leg Severity (deg/100ft)	Build Rate (deg/100ft)	Turn Rate (deg/100ft)
Tie-In	0.00	0.00	0.00	N/A	0.00	0.00	0.00	-4820.00	0.00	0.00	0.00	0.00	0.00
	80.00	0.25	105.83	N/A	-0.05	0.17	80.00	-4740.00	0.03	80.00	0.31	0.31	132.29
	173.00	0.58	116.53	N/A	-0.31	0.78	173.00	-4647.00	0.25	93.00	0.36	0.35	11.51
	265.00	0.13	4.05	N/A	-0.42	1.21	265.00	-4555.00	0.32	92.00	0.70	-0.49	-122.26
	360.00	0.42	312.27	N/A	-0.08	0.96	359.99	-4460.01	-0.00	95.00	0.37	0.31	-54.51
	455.00	0.36	225.93	N/A	-0.05	0.49	454.99	-4365.01	0.01	95.00	0.56	-0.06	-90.88
	550.00	0.43	174.70	N/A	-0.61	0.30	549.99	-4270.01	0.58	95.00	0.37	0.07	-53.93
	645.00	0.25	210.87	N/A	-1.14	0.23	644.99	-4175.01	1.12	95.00	0.29	-0.19	38.07

	739.00	0.04	56.37	N/A	-1.30	0.15	738.99	-4081.01	1.29	94.00	0.30	-0.22	-164.36
	834.00	0.19	5.40	N/A	-1.13	0.20	833.99	-3986.01	1.11	95.00	0.18	0.16	-53.65
	929.00	0.34	88.67	N/A	-0.96	0.49	928.99	-3891.01	0.92	95.00	0.39	0.16	87.65
	1023.00	0.24	169.26	N/A	-1.15	0.81	1022.99	-3797.01	1.08	94.00	0.41	-0.11	85.73
	1118.00	0.34	218.24	N/A	-1.57	0.67	1117.99	-3702.01	1.51	95.00	0.27	0.11	51.56
	1213.00	0.26	159.44	N/A	-1.99	0.57	1212.99	-3607.01	1.94	95.00	0.32	-0.08	-61.89
	1307.00	0.25	208.39	N/A	-2.37	0.55	1306.98	-3513.02	2.32	94.00	0.22	-0.01	52.07
	1402.00	0.21	284.57	N/A	-2.51	0.28	1401.98	-3418.02	2.48	95.00	0.30	-0.04	80.19
	1497.00	0.11	187.11	N/A	-2.56	0.10	1496.98	-3323.02	2.54	95.00	0.26	-0.11	-102.59
	1591.00	0.14	274.15	N/A	-2.64	-0.02	1590.98	-3229.02	2.63	94.00	0.18	0.03	92.60
	1686.00	0.14	241.16	N/A	-2.68	-0.24	1685.98	-3134.02	2.70	95.00	0.08	0.00	-34.73
	1781.00	0.30	303.69	N/A	-2.60	-0.55	1780.98	-3039.02	2.64	95.00	0.28	0.17	65.82
	1876.00	0.26	320.13	N/A	-2.30	-0.89	1875.98	-2944.02	2.36	95.00	0.09	-0.04	17.31
	1922.00	0.36	317.04	N/A	-2.11	-1.06	1921.98	-2898.02	2.19	46.00	0.22	0.22	-6.72
	2092.00	0.10	110.50	101.4	-1.77	-1.28	2091.98	-2728.02	1.87	170.00	0.27	-0.15	90.27
	2187.00	0.10	126.70	131.1	-1.85	-1.14	2186.98	-2633.02	1.94	95.00	0.03	0.00	17.05
	2281.00	0.07	176.98	131.1	-1.96	-1.07	2280.98	-2539.02	2.04	94.00	0.08	-0.03	53.49
	2376.00	0.10	85.01	131.1	-2.01	-0.99	2375.98	-2444.02	2.08	95.00	0.13	0.03	-96.81
	2471.00	2.35	257.43	133.8	-2.43	-2.81	2470.95	-2349.05	2.65	95.00	2.58	2.37	181.49
	2565.00	3.20	258.33	133.8	-3.38	-7.26	2564.84	-2255.16	3.96	94.00	0.91	0.90	0.96
	2660.00	4.86	257.16	136.5	-4.81	-13.78	2659.60	-2160.40	5.92	95.00	1.75	1.75	-1.23
	2754.00	7.84	258.55	139.2	-6.97	-23.94	2753.02	-2066.98	8.90	94.00	3.17	3.17	1.48
	2849.00	10.46	258.34	139.2	-10.00	-38.74	2846.80	-1973.20	13.14	95.00	2.76	2.76	-0.22
	2944.00	11.70	258.22	139.2	-13.70	-56.62	2940.03	-1879.97	18.30	95.00	1.31	1.31	-0.13
	3039.00	13.50	258.06	139.2	-17.97	-76.90	3032.74	-1787.26	24.21	95.00	1.90	1.89	-0.17
	3133.00	12.10	257.75	141.9	-22.33	-97.26	3124.40	-1695.60	30.22	94.00	1.49	-1.49	-0.33
	3228.00	12.59	257.31	141.9	-26.71	-117.09	3217.20	-1602.80	36.22	95.00	0.53	0.52	-0.46
	3323.00	12.20	257.38	141.9	-31.18	-136.99	3309.99	-1510.01	42.30	95.00	0.41	-0.41	0.07
	3418.00	10.76	256.83	144.6	-35.40	-155.42	3403.08	-1416.92	48.01	95.00	1.52	-1.52	-0.58
	3512.00	11.13	257.85	144.6	-39.30	-172.83	3495.37	-1324.63	53.33	94.00	0.44	0.39	1.09
	3607.00	12.72	258.64	144.6	-43.29	-192.05	3588.32	-1231.68	58.89	95.00	1.68	1.67	0.83
	3702.00	13.57	258.54	147.3	-47.57	-213.23	3680.83	-1139.17	64.88	95.00	0.90	0.89	-0.11
	3796.00	14.04	258.32	147.3	-52.07	-235.20	3772.11	-1047.89	71.17	94.00	0.50	0.50	-0.23
	3891.00	14.11	257.89	150.0	-56.83	-257.81	3864.26	-955.74	77.76	95.00	0.13	0.07	-0.45
	3986.00	14.12	257.09	150.0	-61.85	-280.43	3956.39	-863.61	84.62	95.00	0.21	0.01	-0.84
	4081.00	13.98	257.17	150.0	-66.99	-302.91	4048.55	-771.45	91.58	95.00	0.15	-0.15	0.08
	4175.00	14.08	257.36	152.7	-72.01	-325.14	4139.75	-680.25	98.41	94.00	0.12	0.11	0.20
	4270.00	13.88	257.46	152.7	-77.01	-347.54	4231.93	-588.07	105.23	95.00	0.21	-0.21	0.11
	4365.00	13.99	258.30	155.4	-81.81	-369.91	4324.14	-495.86	111.85	95.00	0.24	0.12	0.88
	4459.00	14.05	257.62	152.7	-86.56	-392.18	4415.34	-404.66	118.41	94.00	0.19	0.06	-0.72
	4554.00	13.94	257.26	158.1	-91.56	-414.60	4507.52	-312.48	125.22	95.00	0.15	-0.12	-0.38
	4649.00	13.86	257.34	158.1	-96.58	-436.87	4599.74	-220.26	132.05	95.00	0.09	-0.08	0.08
	4743.00	13.83	258.04	160.8	-101.37	-458.84	4691.01	-128.99	138.63	94.00	0.18	-0.03	0.74
	4838.00	13.94	258.16	160.8	-106.07	-481.15	4783.23	-36.77	145.14	95.00	0.12	0.12	0.13
	4932.00	13.53	256.84	163.5	-110.90	-502.94	4874.54	54.54	151.74	94.00	0.55	-0.44	-1.40
	5027.00	13.95	255.35	163.5	-116.33	-524.84	4966.82	146.82	158.94	95.00	0.58	0.44	-1.57
	5122.00	13.42	256.46	166.2	-121.80	-546.63	5059.13	239.13	166.19	95.00	0.62	-0.56	1.17
	5216.00	12.98	258.21	166.2	-126.52	-567.57	5150.64	330.64	172.60	94.00	0.63	-0.47	1.86
	5311.00	10.32	255.92	166.2	-130.77	-586.27	5243.68	423.68	178.37	95.00	2.84	-2.80	-2.41
	5406.00	11.43	258.81	168.9	-134.66	-603.76	5336.97	516.97	183.68	95.00	1.30	1.17	3.04
	5501.00	12.51	257.67	168.9	-138.69	-623.05	5429.90	609.90	189.27	95.00	1.16	1.14	-1.20
	5596.00	12.08	258.29	168.9	-142.86	-642.63	5521.75	701.75	195.03	94.00	0.48	-0.46	0.66
	5690.00	11.64	258.24	168.9	-146.83	-661.74	5614.72	794.72	200.56	95.00	0.46	-0.46	-0.05
	5785.00	12.28	258.20	174.3	-150.85	-681.02	5707.66	887.66	206.14	95.00	0.67	0.67	-0.04
	5879.00	12.30	258.11	177.0	-154.95	-700.60	5799.50	979.50	211.84	94.00	0.03	0.02	-0.10
	5974.00	12.45	258.32	177.0	-159.11	-720.53	5892.30	1072.30	217.62	95.00	0.16	0.16	0.22
	6069.00	12.45	259.91	177.0	-162.98	-740.64	5985.06	1165.06	223.12	95.00	0.36	0.00	1.67
	6163.00	12.21	258.68	177.0	-166.71	-760.36	6076.89	1256.89	228.45	94.00	0.38	-0.26	-1.31
	6258.00	15.66	241.50	179.7	-174.80	-781.50	6169.12	1349.12	238.25	95.00	5.63	3.63	-18.08
	6352.00	19.07	197.79	179.7	-195.57	-797.41	6259.19	1439.19	260.25	94.00	13.99	3.63	-46.50

	6447.00	27.00	201.88	182.5	-230.41	-810.21	6346.36	1526.36	236.03	95.00	8.51	8.35	4.31
	6542.00	35.09	202.41	185.2	-275.75	-828.68	6427.88	1607.88	342.72	95.00	8.52	8.52	0.56
	6637.00	44.61	201.19	187.9	-332.22	-851.20	6500.73	1680.73	400.85	95.00	10.05	10.02	-1.28
	6731.00	53.91	197.89	187.9	-399.30	-874.86	6562.02	1742.02	469.64	94.00	10.24	9.89	-3.51
	6826.00	58.06	195.27	187.9	-474.76	-897.28	6615.16	1795.16	546.68	95.00	4.93	4.37	-2.76
	6921.00	64.76	189.86	187.9	-556.11	-915.28	6660.62	1840.62	629.24	95.00	8.64	7.05	-5.69
	7016.00	74.13	185.45	190.6	-644.16	-927.01	6693.95	1873.95	717.95	95.00	10.78	9.86	-4.64
	7110.00	82.81	183.28	196.0	-735.90	-933.98	6712.73	1892.73	809.96	94.00	9.51	9.23	-2.31
	7205.00	90.31	180.62	196.0	-830.60	-937.20	6718.42	1898.42	904.60	95.00	8.37	7.89	-2.80
	7300.00	89.94	180.43	201.4	-925.60	-938.07	6718.22	1898.22	999.35	95.00	0.44	-0.39	-0.20
	7394.00	90.40	180.74	204.1	-1019.59	-939.03	6717.94	1897.94	1093.11	94.00	0.59	0.49	0.33
	7489.00	90.28	179.48	206.8	-1114.59	-939.21	6717.37	1897.37	1187.80	95.00	1.33	-0.13	-1.33
	7584.00	90.15	179.65	206.8	-1209.58	-938.49	6717.02	1897.02	1282.42	95.00	0.23	-0.14	0.18
	7678.00	88.80	178.07	209.5	-1303.56	-936.62	6717.88	1897.88	1375.92	94.00	2.21	-1.44	-1.68
	7773.00	88.34	178.94	209.5	-1398.49	-934.14	6720.25	1900.25	1470.33	95.00	1.04	-0.48	0.92
	7868.00	90.58	180.37	209.5	-1493.48	-933.57	6721.14	1901.14	1564.95	95.00	2.80	2.36	1.51
	7963.00	90.49	179.58	212.2	-1588.47	-933.53	6720.26	1900.26	1659.62	95.00	0.84	-0.09	-0.83
	8058.00	90.83	179.62	214.9	-1683.47	-932.87	6719.16	1899.16	1754.24	95.00	0.36	0.36	0.04
	8152.00	90.92	179.26	214.9	-1777.45	-931.95	6717.73	1897.73	1847.84	94.00	0.39	0.10	-0.38
	8247.00	90.83	179.93	214.9	-1872.44	-931.28	6716.28	1896.28	1942.45	95.00	0.71	-0.09	0.71
	8342.00	90.92	179.74	217.6	-1967.42	-931.00	6714.83	1894.83	2037.09	95.00	0.22	0.09	-0.20
	8436.00	90.92	179.85	217.6	-2061.41	-930.67	6713.32	1893.32	2130.74	94.00	0.12	0.00	0.12
	8531.00	90.52	178.33	220.3	-2156.39	-929.16	6712.12	1892.12	2225.27	95.00	1.65	-0.42	-1.60
	8721.00	90.68	179.62	223.0	-2346.34	-925.76	6710.13	1890.13	2414.31	190.00	0.68	0.08	0.68
	8816.00	90.68	179.46	223.0	-2441.33	-925.00	6709.01	1889.01	2508.92	95.00	0.17	-0.00	-0.17
	8910.00	91.11	179.03	225.7	-2535.31	-923.76	6707.54	1887.54	2602.48	94.00	0.65	0.46	-0.46
	9005.00	90.80	179.78	228.4	-2630.29	-922.77	6705.95	1885.95	2697.06	95.00	0.85	-0.33	0.79
	9100.00	90.80	180.71	228.4	-2725.28	-923.18	6704.63	1884.63	2791.76	95.00	0.98	0.00	0.98
	9194.00	90.83	179.07	228.4	-2819.27	-923.00	6703.29	1883.29	2885.42	94.00	1.74	0.03	-1.74
	9289.00	90.46	179.48	231.1	-2914.26	-921.80	6702.22	1882.22	2979.99	95.00	0.58	-0.39	0.43
	9384.00	90.86	178.99	231.1	-3009.24	-920.53	6701.13	1881.13	3074.55	95.00	0.67	0.42	-0.52
	9478.00	90.46	179.65	225.7	-3103.23	-919.41	6700.04	1880.04	3168.13	94.00	0.82	-0.43	0.70
	9573.00	90.12	178.44	231.1	-3198.21	-917.83	6699.56	1879.56	3262.66	95.00	1.32	-0.36	-1.27
	9762.00	91.02	178.73	233.8	-3387.14	-913.16	6697.68	1877.68	3450.58	189.00	0.50	0.48	0.15
	9856.00	90.49	180.53	282.5	-3481.13	-912.56	6696.44	1876.44	3544.20	94.00	2.00	-0.56	1.91
	9951.00	90.00	178.25	236.5	-3576.12	-911.54	6696.04	1876.04	3638.78	95.00	2.45	-0.52	-2.40
	10140.00	90.18	179.61	239.2	-3765.08	-908.01	6695.74	1875.74	3826.82	189.00	0.73	0.10	0.72
	10235.00	90.18	178.90	239.2	-3860.07	-906.78	6695.44	1875.44	3921.39	95.00	0.75	0.00	-0.75
	10329.00	90.09	179.08	239.2	-3954.05	-905.12	6695.22	1875.22	4014.92	94.00	0.21	-0.10	0.19
	10424.00	90.68	179.19	239.2	-4049.04	-903.69	6694.58	1874.58	4109.47	95.00	0.63	0.62	0.12
	10519.00	90.49	179.24	241.9	-4144.03	-902.39	6693.61	1873.61	4204.03	95.00	0.21	-0.20	0.05
	10614.00	90.49	178.40	241.9	-4239.00	-900.43	6692.80	1872.80	4298.53	95.00	0.88	-0.00	-0.88
	10708.00	90.62	179.31	244.6	-4332.98	-898.55	6691.89	1871.89	4392.03	94.00	0.98	0.14	0.97
	10803.00	90.71	178.81	244.6	-4427.96	-896.99	6690.79	1870.79	4486.57	95.00	0.53	0.09	-0.53
	10898.00	91.23	179.09	244.6	-4522.93	-895.25	6689.18	1869.18	4581.08	95.00	0.62	0.55	0.29
	10992.00	90.71	179.67	244.6	-4616.91	-894.24	6687.59	1867.59	4674.66	94.00	0.83	-0.55	0.62
	11087.00	90.46	181.08	247.3	-4711.90	-894.86	6686.62	1866.62	4769.38	95.00	1.51	-0.26	1.48
	11182.00	90.43	179.56	247.3	-4806.89	-895.39	6685.88	1865.88	4864.10	95.00	1.60	-0.03	-1.60
	11277.00	90.55	181.38	247.3	-4901.88	-896.17	6685.07	1865.07	4958.83	95.00	1.92	0.13	1.92
	11371.00	90.92	179.71	250.0	-4995.87	-897.06	6683.86	1863.86	5052.57	94.00	1.82	0.39	-1.78
	11466.00	89.32	180.47	250.0	-5090.86	-897.21	6683.66	1863.66	5147.26	95.00	1.86	-1.68	0.80
	11560.00	90.83	179.07	250.0	-5184.86	-896.83	6683.54	1863.54	5240.91	94.00	2.19	1.61	-1.49
	11655.00	90.37	179.52	250.0	-5279.84	-895.66	6682.55	1862.55	5335.48	95.00	0.68	-0.48	0.47
	11749.00	90.40	179.97	250.0	-5373.84	-895.25	6681.91	1861.91	5429.12	94.00	0.48	0.03	0.48
	11844.00	90.37	179.95	250.0	-5468.84	-895.18	6681.28	1861.28	5523.80	95.00	0.04	-0.03	-0.02
	11939.00	90.40	180.07	250.0	-5563.84	-895.20	6680.64	1860.64	5618.48	95.00	0.13	0.03	0.13
	12033.00	89.78	179.22	252.7	-5657.83	-894.61	6680.49	1860.49	5712.11	94.00	1.12	-0.66	-0.90
	12128.00	90.62	180.22	250.0	-5752.83	-894.15	6680.16	1860.16	5806.75	95.00	1.37	0.88	1.05
	12222.00	89.97	180.96	250.0	-5846.82	-895.12	6679.67	1859.67	5900.50	94.00	1.05	-0.69	0.79
	12317.00	90.34	180.68	252.7	-5941.81	-896.48	6679.42	1859.42	5995.29	95.00	0.49	0.39	-0.29
	12412.00	91.20	178.95	252.7	-6036.80	-896.17	6678.14	1858.14	6089.93	95.00	2.03	0.91	-1.82

	12507.00	89.35	177.43	252.7	-6131.74	-893.17	6677.68	1857.68	6184.31	95.00	2.52	-1.95	-1.60
	12601.00	90.12	179.68	255.4	-6225.70	-890.80	6678.12	1858.12	6277.76	94.00	2.53	0.82	2.39
	12696.00	90.62	181.89	255.4	-6320.69	-892.10	6677.51	1857.51	6372.53	95.00	2.39	0.53	2.33
	12791.00	91.05	180.75	255.4	-6415.65	-894.29	6676.12	1856.12	6467.35	95.00	1.28	0.45	-1.20
	12885.00	90.62	180.04	255.4	-6509.64	-894.94	6674.75	1854.75	6561.08	94.00	0.88	-0.46	-0.76
	12980.00	91.05	180.47	258.1	-6604.63	-895.36	6673.37	1853.37	6655.78	95.00	0.64	0.45	0.45
	13075.00	89.45	178.24	206.8	-6699.61	-894.29	6672.95	1852.95	6750.36	95.00	2.89	-1.68	-2.35
	13170.00	90.09	179.82	258.1	-6794.59	-892.68	6673.33	1853.33	6844.89	95.00	1.79	0.67	1.66
	13264.00	90.49	182.85	258.1	-6888.55	-894.87	6672.86	1852.86	6938.71	94.00	3.25	0.43	3.22
	13359.00	88.77	179.67	258.1	-6983.51	-896.96	6673.47	1853.47	7033.53	95.00	3.81	-1.81	-3.35
	13454.00	90.25	180.40	258.1	-7078.51	-897.02	6674.28	1854.28	7128.20	95.00	1.74	1.56	0.77
	13548.00	90.80	178.36	258.1	-7172.49	-896.00	6673.42	1853.42	7221.79	94.00	2.25	0.59	-2.17
	13642.00	91.82	180.74	258.1	-7266.46	-895.26	6671.27	1851.27	7315.38	94.00	2.75	1.09	2.53
	13737.00	91.26	180.34	258.1	-7361.42	-896.16	6668.72	1848.72	7410.09	95.00	0.72	-0.59	-0.42
	13832.00	91.26	179.06	260.8	-7456.39	-895.66	6666.63	1846.63	7504.71	95.00	1.35	0.00	-1.35
	13926.00	91.69	180.54	260.8	-7550.36	-895.33	6664.21	1844.21	7598.33	94.00	1.64	0.46	1.57
	14021.00	91.39	179.83	244.6	-7645.32	-895.64	6661.66	1841.66	7693.00	95.00	0.81	-0.32	-0.75
	14115.00	91.20	180.10	260.8	-7739.30	-895.58	6659.53	1839.53	7786.65	94.00	0.35	-0.20	0.29
	14210.00	90.28	179.34	260.8	-7834.29	-895.12	6658.31	1838.31	7881.29	95.00	1.26	-0.97	-0.80
	14304.00	90.80	180.17	260.8	-7928.28	-894.72	6657.42	1837.42	7974.93	94.00	1.04	0.55	0.88
	14399.00	90.40	179.78	260.8	-8023.27	-894.68	6656.43	1836.43	8069.60	95.00	0.59	-0.42	-0.41
	14587.00	90.28	179.19	263.5	-8211.26	-892.99	6655.31	1835.31	8256.82	188.00	0.32	-0.06	-0.31
	14682.00	90.77	178.12	263.5	-8306.23	-890.76	6654.44	1834.44	8351.29	95.00	1.24	0.52	-1.13
	14777.00	90.25	177.72	263.5	-8401.16	-887.31	6653.59	1833.59	8445.62	95.00	0.69	-0.55	-0.42
	14871.00	90.92	179.93	263.5	-8495.13	-885.38	6652.63	1832.63	8539.11	94.00	2.46	0.71	2.35
	14966.00	90.83	180.95	263.5	-8590.12	-886.11	6651.18	1831.18	8633.84	95.00	1.08	-0.09	1.07
	15061.00	90.22	180.03	263.5	-8685.11	-886.92	6650.31	1830.31	8728.58	95.00	1.16	-0.64	-0.97
	15156.00	90.37	180.68	263.5	-8780.10	-887.51	6649.82	1829.82	8823.30	95.00	0.70	0.16	0.68
	15250.00	91.20	181.42	263.5	-8874.08	-889.23	6648.54	1828.54	8917.10	94.00	1.18	0.88	0.79
	15345.00	90.40	180.29	263.5	-8969.06	-890.65	6647.21	1827.21	9011.88	95.00	1.46	-0.84	-1.19
	15439.00	90.49	181.02	263.5	-9063.05	-891.73	6646.48	1826.48	9105.64	94.00	0.78	0.10	0.78
	15534.00	90.62	180.75	263.5	-9158.03	-893.19	6645.56	1825.56	9200.42	95.00	0.32	0.14	-0.28
	15629.00	90.52	180.57	263.5	-9253.02	-894.29	6644.61	1824.61	9295.18	95.00	0.22	-0.11	-0.19
	15724.00	90.74	178.79	266.2	-9348.01	-893.76	6643.57	1823.57	9389.81	95.00	1.89	0.23	-1.87
	15819.00	90.95	181.45	266.2	-9442.99	-893.96	6642.17	1822.17	9484.49	95.00	2.81	0.22	2.80
	15913.00	90.03	180.15	266.2	-9536.97	-895.27	6641.36	1821.36	9578.26	94.00	1.69	-0.98	-1.38
	16008.00	90.55	180.78	266.2	-9631.97	-896.04	6640.88	1820.88	9673.00	95.00	0.86	0.55	0.66
	16103.00	90.25	181.05	266.2	-9726.95	-897.56	6640.22	1820.22	9767.79	95.00	0.42	-0.32	0.28
	16198.00	90.28	180.62	266.2	-9821.94	-898.94	6639.78	1819.78	9862.57	95.00	0.45	0.03	-0.45
	16292.00	90.28	180.78	266.2	-9915.93	-900.09	6639.32	1819.32	9956.34	94.00	0.17	-0.00	0.17
	16387.00	90.43	180.49	266.2	-10010.93	-901.14	6638.73	1818.73	10051.10	95.00	0.34	0.16	-0.31
	16482.00	90.62	181.08	269.0	-10105.91	-902.44	6637.86	1817.86	10145.88	95.00	0.65	0.20	0.62
	16576.00	90.37	180.91	269.0	-10199.90	-904.07	6637.05	1817.05	10239.68	94.00	0.32	-0.27	-0.18
	16671.00	90.43	180.65	269.0	-10294.88	-905.37	6636.39	1816.39	10334.45	95.00	0.28	0.06	-0.27
	16765.00	90.37	179.71	269.0	-10388.88	-905.66	6635.73	1815.73	10428.16	94.00	1.00	-0.06	-1.00
	16860.00	90.34	181.01	269.0	-10483.87	-906.26	6635.14	1815.14	10522.88	95.00	1.37	-0.03	1.37
	16955.00	90.12	180.07	271.7	-10578.87	-907.16	6634.76	1814.76	10617.63	95.00	1.02	-0.23	-0.99
	17049.00	90.22	180.55	271.7	-10672.87	-907.66	6634.48	1814.48	10711.35	94.00	0.52	0.11	0.51
	17144.00	90.00	179.51	271.7	-10767.87	-907.71	6634.30	1814.30	10806.03	95.00	1.12	-0.23	-1.09
	17239.00	90.28	179.36	271.7	-10862.86	-906.78	6634.07	1814.07	10900.63	95.00	0.33	0.29	-0.16
	17330.00	90.37	180.70	269.0	-10953.86	-906.82	6633.55	1813.55	10991.33	91.00	1.48	0.10	1.47
Projection	17354.00	90.37	180.70	N/A	-10977.85	-907.12	6633.40	1813.40	11015.27	24.00	0.00	0.00	-0.00