

LEGEND:

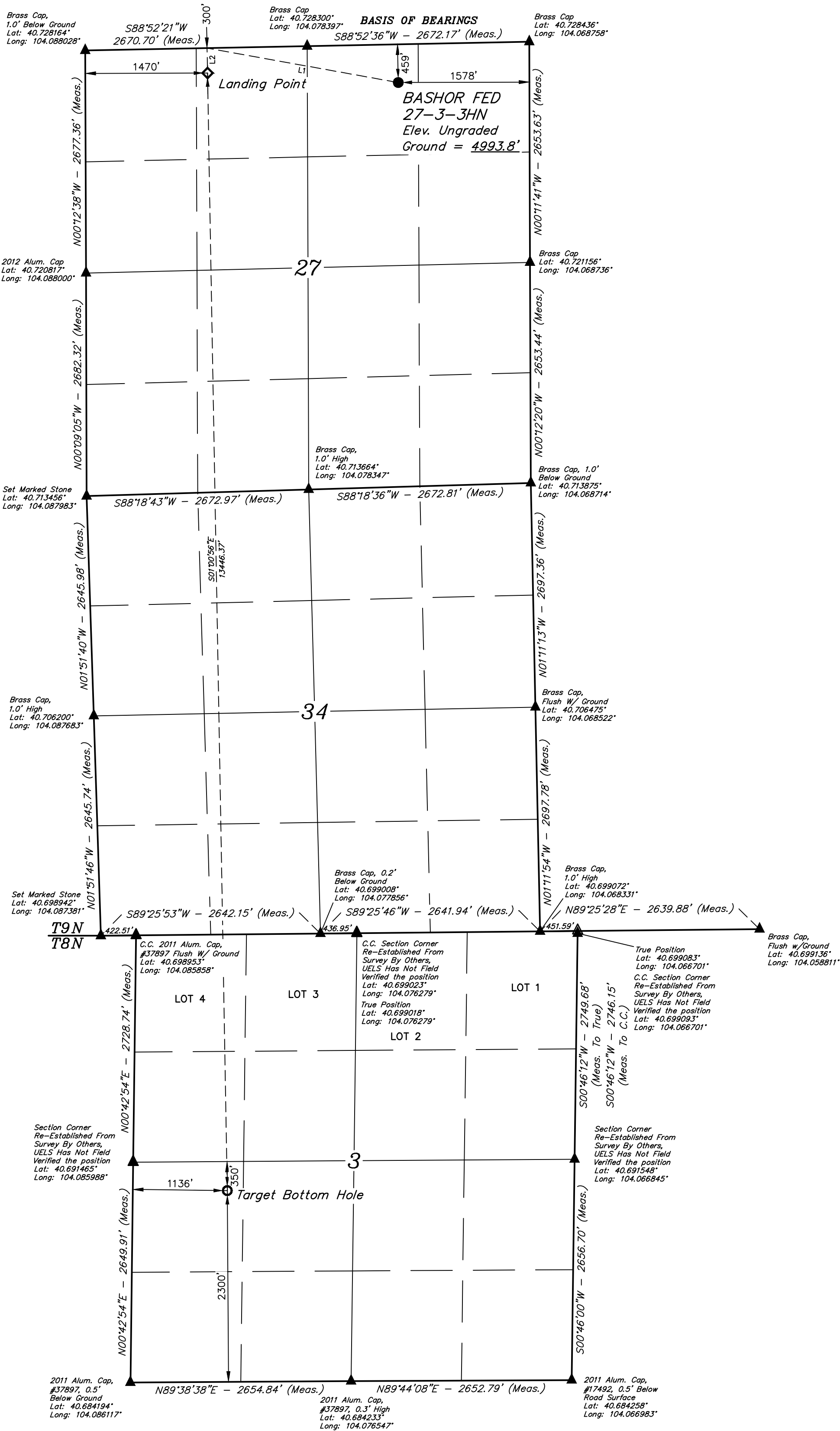
- = PROPOSED WELLHEAD.
- ◆ = LANDING POINT.
- = TARGET BOTTOM HOLE.
- ▲ = SECTION CORNERS LOCATED. (NAD 83)
- △ = SECTION CORNERS RE-ESTABLISHED. (Not Set on Ground.) (NAD 83)

NOTE:

Distances referenced on plat to section lines are perpendicular.

T9N, R60W, 6th P.M.

LINE TABLE		
LINE	DIRECTION	LENGTH
L1	N79°47'31"W	2337.27'
L2	S01°00'56"E	300.00'



PDOP = 1.4



NAD 83 (SURFACE LOCATION)	NAD 83 (LANDING POINT)	NAD 83 (TARGET BOTTOM HOLE)
LATITUDE = 40°43'37.55" (40.727096)	LATITUDE = 40°43'38.70" (40.727416)	LATITUDE = 40°41'25.88" (40.690523)
LONGITUDE = 104°04'28.00" (104.074446)	LONGITUDE = 104°04'57.80" (104.082723)	LONGITUDE = 104°04'54.87" (104.081908)
NAD 27 (SURFACE LOCATION)	NAD 27 (LANDING POINT)	NAD 27 (TARGET BOTTOM HOLE)
LATITUDE = 40°43'37.59" (40.727110)	LATITUDE = 40°43'38.75" (40.727429)	LATITUDE = 40°41'25.93" (40.690536)
LONGITUDE = 104°04'26.19" (104.073942)	LONGITUDE = 104°04'55.99" (104.082219)	LONGITUDE = 104°04'53.06" (104.081404)
STATE PLANE NAD 83 (CO. NORTH)	STATE PLANE NAD 83 (CO. NORTH)	STATE PLANE NAD 83 (CO. NORTH)
N: 1510901.32 E: 3395098.95	N: 1510980.98 E: 3392803.10	N: 1497545.20 E: 3393243.83
STATE PLANE NAD 27 (CO. NORTH)	STATE PLANE NAD 27 (CO. NORTH)	STATE PLANE NAD 27 (CO. NORTH)
N: 510899.60 E: 2395249.06	N: 510979.29 E: 2392953.15	N: 497543.75 E: 2393394.07

BASIS OF ELEVATION

SPOT ELEVATION LOCATED AT THE NORTHEAST CORNER OF SECTION 2, T9N, R61W, 6th P.M., TAKEN FROM THE GROVER SOUTH, QUADRANGLE, COLORADO, WELD COUNTY, 7.5 MINUTE QUAD (TOPOGRAPHICAL MAP) PUBLISHED BY THE UNITED STATES DEPARTMENT OF THE INTERIOR, GEOLOGICAL SURVEY. SAID ELEVATION IS MARKED AS BEING 5043 FEET.

UELS, LLC

Corporate Office \* 85 South 200 East  
Vernal, UT 84078 \* (435) 789-1017



REV: 1 06-10-20 C:IVIE (ADD SECTION & TBH MOVE)

MALLARD EXPLORATION

BASHOR FED 27-3-3HN  
NW 1/4 NE 1/4, SECTION 27, T9N, R60W, 6th P.M.  
WELD COUNTY, COLORADO

SURVEYED BY	GREG WEIMER, N.W.	02-07-20	SCALE
DRAWN BY	CIVIE	03-24-20	1" = 1000'

WELL LOCATION PLAT

CERTIFICATE OF RECORD  
THIS IS TO CERTIFY THAT THE ABOVE PLAT WAS PREPARED IN ACCORDANCE WITH THE NOTES OF ACTUAL SURVEYS MADE BY ME OR UNDER MY SUPERVISION, AND THAT THE SAME ARE TRUE AND CORRECT TO THE BEST OF MY KNOWLEDGE AND BELIEF.

REGISTERED LAND SURVEYOR  
REGISTRATION NO. 28285  
STATE OF COLORADO  
06-10-20