

LEGEND:

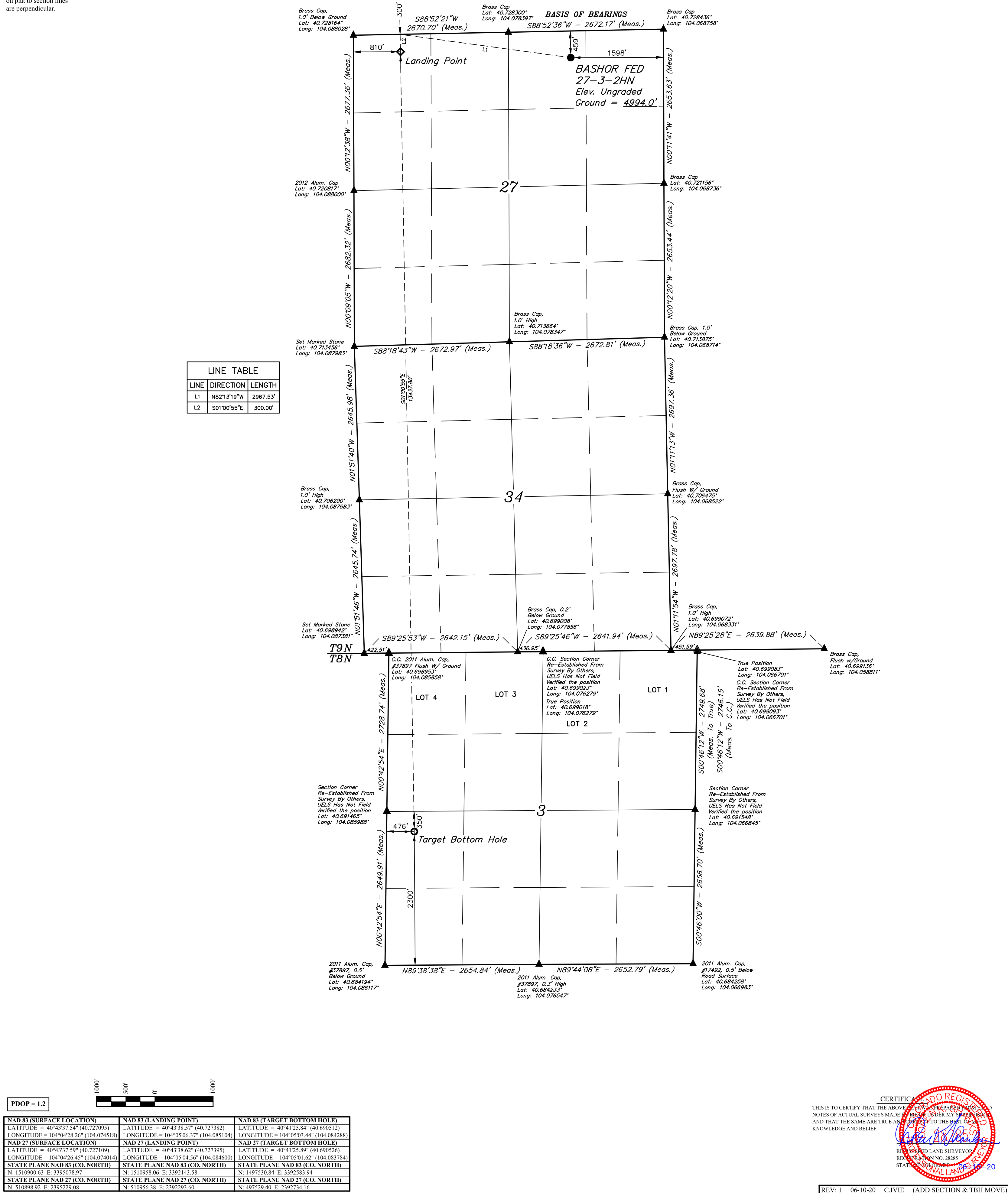
- = PROPOSED WELLHEAD.
- ◆ = LANDING POINT.
- = TARGET BOTTOM HOLE.
- ▲ = SECTION CORNERS LOCATED. (NAD 83)
- △ = SECTION CORNERS RE-ESTABLISHED. (Not Set on Ground.) (NAD 83)

NOTE:

Distances referenced on plat to section lines are perpendicular.

T9N, R60W, 6th P.M.

LINE TABLE		
LINE	DIRECTION	LENGTH
L1	N82°13'19"W	2967.53'
L2	S01°00'55"E	300.00'



BASIS OF ELEVATION
SPOT ELEVATION LOCATED AT THE NORTHEAST CORNER OF SECTION 2, T9N, R61W, 6th P.M., TAKEN FROM THE GROVER SOUTH QUADRANGLE, COLORADO, WELD COUNTY, 7.5 MINUTE QUAD (TOPOGRAPHICAL MAP) PUBLISHED BY THE UNITED STATES DEPARTMENT OF THE INTERIOR, GEOLOGICAL SURVEY. SAID ELEVATION IS MARKED AS BEING 5043 FEET.

UELS, LLC
Corporate Office * 85 South 200 East
Vernal, UT 84078 * (435) 789-1017

CERTIFICATE OF RECORDING

THIS IS TO CERTIFY THAT THE ABOVE SURVEY WAS PREPARED AND COMPLETED IN ACCORDANCE WITH THE REQUIREMENTS OF THE COLORADO SURVEYING ACT, AND THAT THE SAME ARE TRUE AND CORRECT TO THE BEST OF MY KNOWLEDGE AND BELIEF.

RECORDED LAND SURVEYOR
REGISTRATION NO. 28285
STATE OF COLORADO
06-10-20

REV: 1 06-10-20 C.IVIE (ADD SECTION & TBH MOVE)

MALLARD EXPLORATION

BASHOR FED 27-3-2HN
NW 1/4 NE 1/4, SECTION 27, T9N, R60W, 6th P.M.
WELD COUNTY, COLORADO

SURVEYED BY	GREG WEIMER, N.W.	02-07-20	SCALE
DRAWN BY	CIVIE	03-24-20	1" = 1000'

WELL LOCATION PLAT