
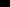
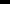
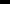
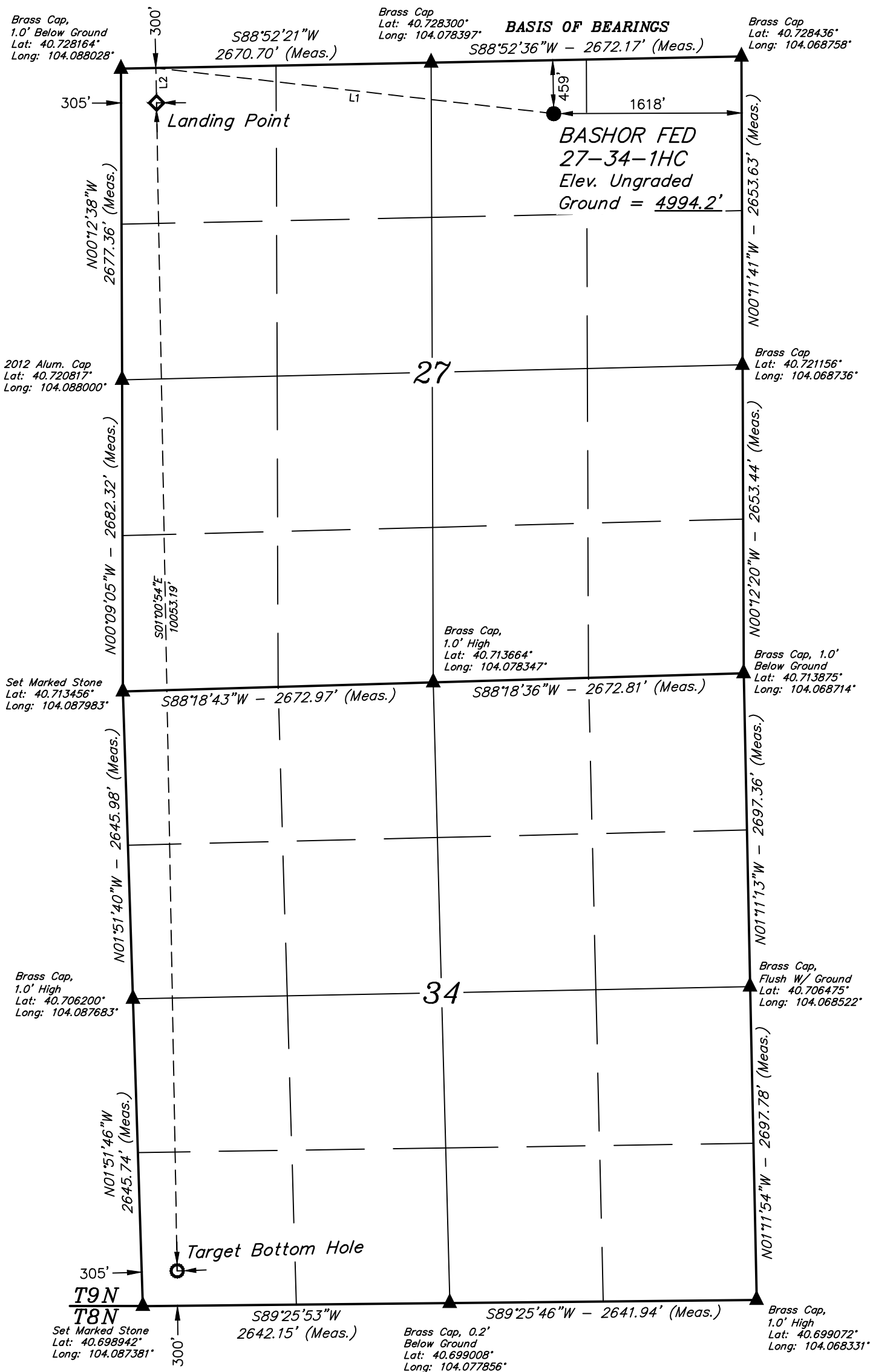


*T9N, R60W, 6th P.M.*

-  = PROPOSED WELLHEAD.  
 = LANDING POINT.  
 = TARGET BOTTOM HOLE.  
 = SECTION CORNERS  
 LOCATED. (NAD 83)

**NOTE:**  
Distances referenced  
on plat to section lines  
are perpendicular.

LINE TABLE		
LINE	DIRECTION	LENGTH
L1	N83°28'12"W	3447.57'
L2	S01°00'54"E	300.00'



**PDOP = 1.2**



<b>NAD 83 (SURFACE LOCATION)</b>	<b>NAD 83 (LANDING POINT)</b>	<b>NAD 83 (TARGET BOTTOM HOLE)</b>
LATITUDE = 40°43'37.54" (40.727094)	LATITUDE = 40°43'38.48" (40.727356)	LATITUDE = 40°41'59.18" (40.699773)
LONGITUDE = 104°04'28.52" (104.074590)	LONGITUDE = 104°05'12.93" (104.086925)	LONGITUDE = 104°05'10.73" (104.086315)
<b>NAD 27 (SURFACE LOCATION)</b>	<b>NAD 27 (LANDING POINT)</b>	<b>NAD 27 (TARGET BOTTOM HOLE)</b>
LATITUDE = 40°43'37.59" (40.727108)	LATITUDE = 40°43'38.53" (40.727369)	LATITUDE = 40°41'59.23" (40.699786)
LONGITUDE = 104°04'26.71" (104.074086)	LONGITUDE = 104°05'11.12" (104.086421)	LONGITUDE = 104°05'08.92" (104.085811)
<b>STATE PLANE NAD 83 (CO. NORTH)</b>	<b>STATE PLANE NAD 83 (CO. NORTH)</b>	<b>STATE PLANE NAD 83 (CO. NORTH)</b>
N: 1510899.94 E: 3395058.98	N: 1510940.52 E: 3391638.94	N: 1500895.24 E: 3391968.34
<b>STATE PLANE NAD 27 (CO. NORTH)</b>	<b>STATE PLANE NAD 27 (CO. NORTH)</b>	<b>STATE PLANE NAD 27 (CO. NORTH)</b>
N: 510898.23 E: 2395209.09	N: 510938.85 E: 2391788.96	N: 500893.74 E: 2392118.50

CERTIFICATE

THIS IS TO CERTIFY THAT THE ABOVE DATA WAS PREPARED FROM FIELD NOTES OF ACTUAL SURVEYS MADE BY ME OR UNDER MY SUPERVISION, AND THAT THE SAME ARE TRUE AND CORRECT TO THE BEST OF MY KNOWLEDGE AND BELIEF.

REGISTERED LAND SURVEYOR  
REGISTRATION NO. 28285  
STATE OF COLORADO 03-24-20

## BASIS OF ELEVATION

SPOT ELEVATION LOCATED AT THE NORTHEAST CORNER OF SECTION 2, T9N, R61W, 6th P.M., TAKEN FROM THE GROVER SOUTH, QUADRANGLE, COLORADO, WELD COUNTY, 7.5 MINUTE QUAD (TOPOGRAPHICAL MAP) PUBLISHED BY THE UNITED STATES DEPARTMENT OF THE INTERIOR, GEOLOGICAL SURVEY. SAID ELEVATION IS MARKED AS BEING 5043 FEET.



**UELS, LLC**  
Corporate Office \* 85 South 200 East  
Vernal, UT 84078 \* (435) 789-1017



## MALLARD EXPLORATION

**BASHOR FED 27-34-1HC  
NW 1/4 NE 1/4, SECTION 27, T9N, R60W, 6th P.M.  
WELD COUNTY, COLORADO**

<b>SURVEYED BY</b>	GREG WEIMER, N.W.	02-07-20	<b>SCALE</b>
<b>DRAWN BY</b>	C.IVIE	03-24-20	1" = 1000'

# WELL LOCATION PLAT