

Inspection Photos
Operator: BP America
API: 067-08898
Date: 9/18/2020



Photo 1. View of the project area from the southwestern corner facing center.



Photo 2. View of the southern project area from the southwestern corner facing eastward. Revegetation is progressing with grasses such as western wheatgrass and smooth brome.



Photo 3. View of the northern project area from the northeastern corner facing westward.

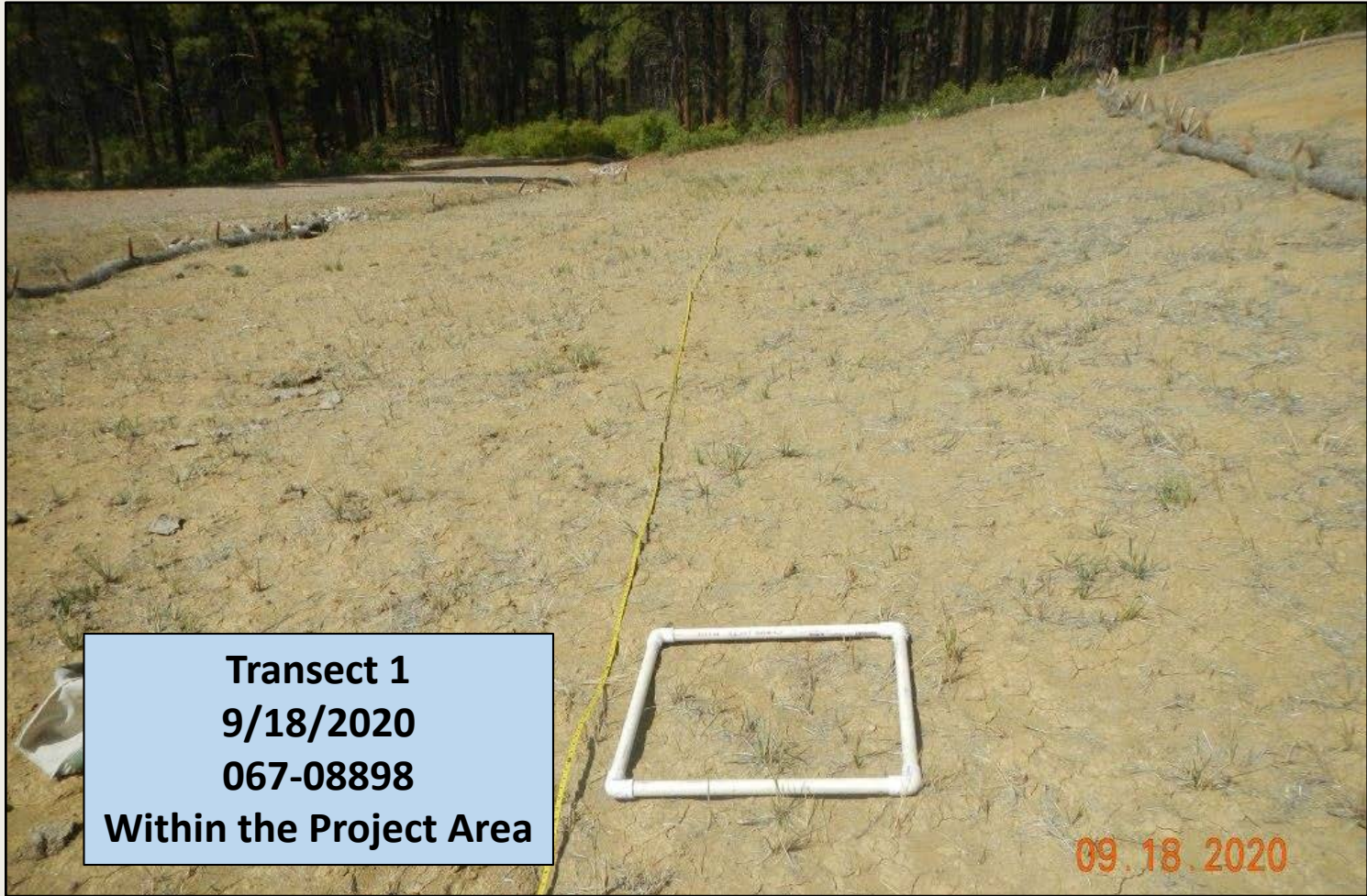


Photo 4. View of the beginning of “Germination Transect 1”, facing westward.



Photos 5/6. Birdseye view of typical germination quadrats along the transect. Young grasses such as western wheatgrass are becoming established here.



Photos 7/8. Locked gate coming in (left) and leaving (right).



Photo 9. View of reference area vegetation comprised of ponderosa pine woodland with understory of gambel oak, western wheatgrass, and antelope bitterbrush.