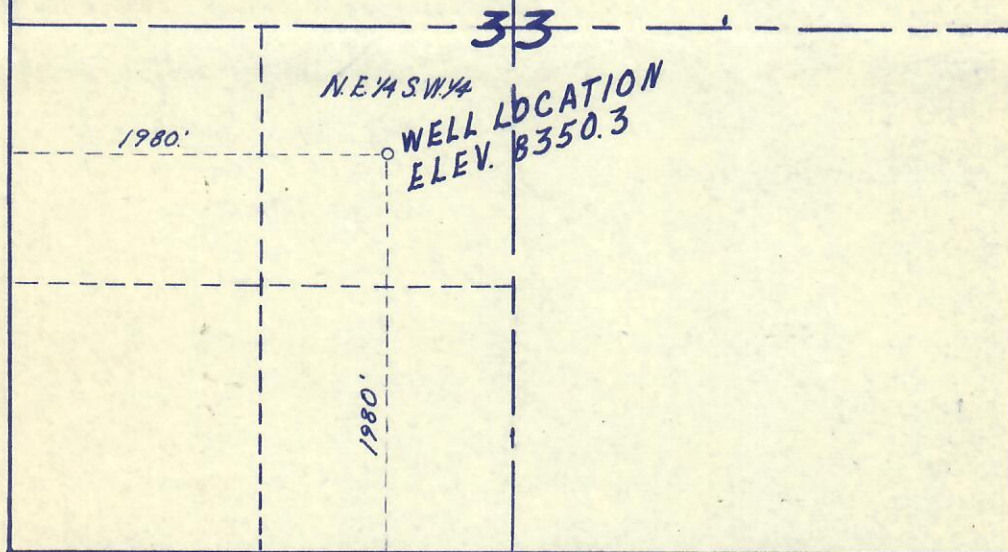




RECEIVED  
AUG 2 1960

OIL & GAS  
CONSERVATION COMMISSION

N



T. 11 N., R. 87 W. 6TH P.M.

SCALE 1 INCH = 1000 FEET

WELL LOCATION

COLORADO-FEDERAL B. NO. 1

**SUNRAY MID-CONTINENT OIL CO.**

**DENVER, COLORADO**

SITUATED IN NE 1/4 SW 1/4 SECTION 33

T. 11 N., R. 87 W. OF THE 6TH P.M.

**ROUTT COUNTY, COLORADO**

REF. POINT - 200 FEET WEST ELEV. 8352.2

REF. POINT - 200 FEET EAST ELEV. 8365.25

THIS IS TO CERTIFY THAT THE  
WELL LOCATION SHOWN ON THIS  
PLAT WAS PLOTTED FROM FIELD  
NOTES OF ACTUAL SURVEY MADE  
BY ME OR UNDER MY SUPERVISION,  
AND THAT THE SAME ARE TRUE  
AND CORRECT TO THE BEST OF  
MY KNOWLEDGE AND BELIEF.  
DATE SURVEYED: JUNE 29, 1960.

*Tom Walker*

TOM WALKER

REGISTERED LAND SURVEYOR  
GLENWOOD SPRINGS, COLO  
CERTIFICATE NO. 597