

Dataset: monfortgilcrestk09-13\_6-19-19\_noble\_cbl.db: field/well/run1/pass4  
 Total length: 17.90 ft  
 Total weight: 98.82 lb  
 O.D.: 2.75 in



## 4.5" MAIN PASS

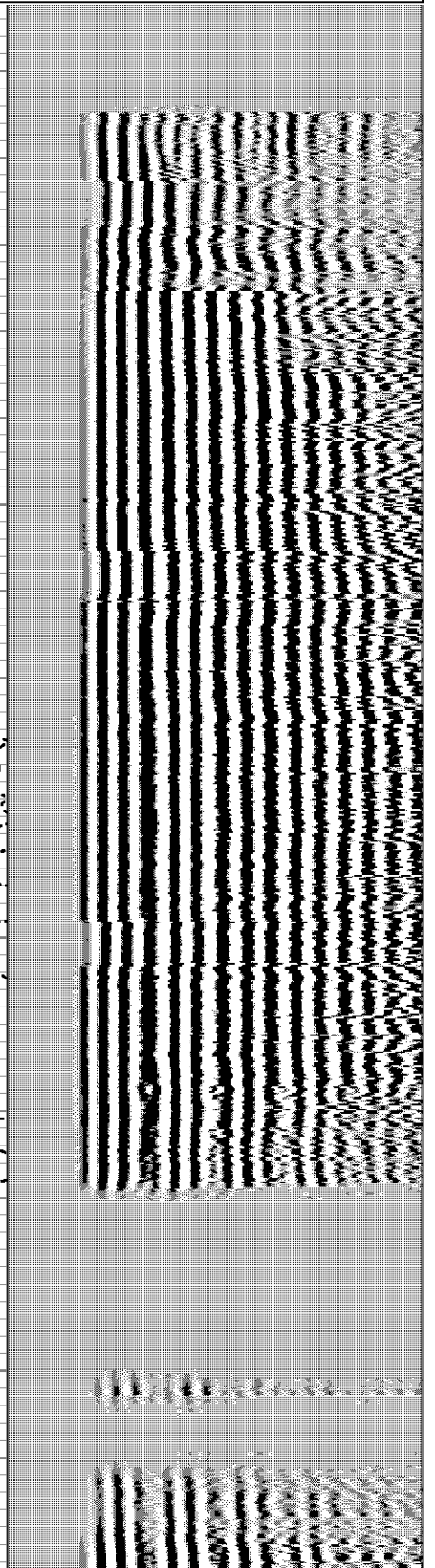
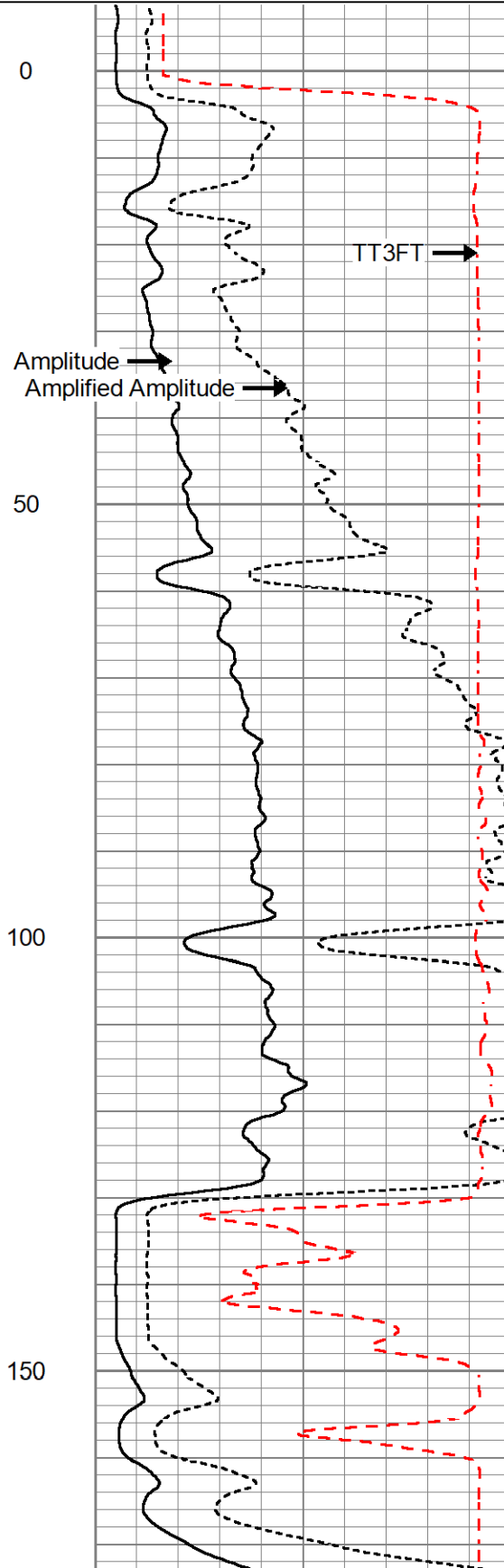
LOG RAN WITH 0 PSI SURFACE INDUCED PRESSURE

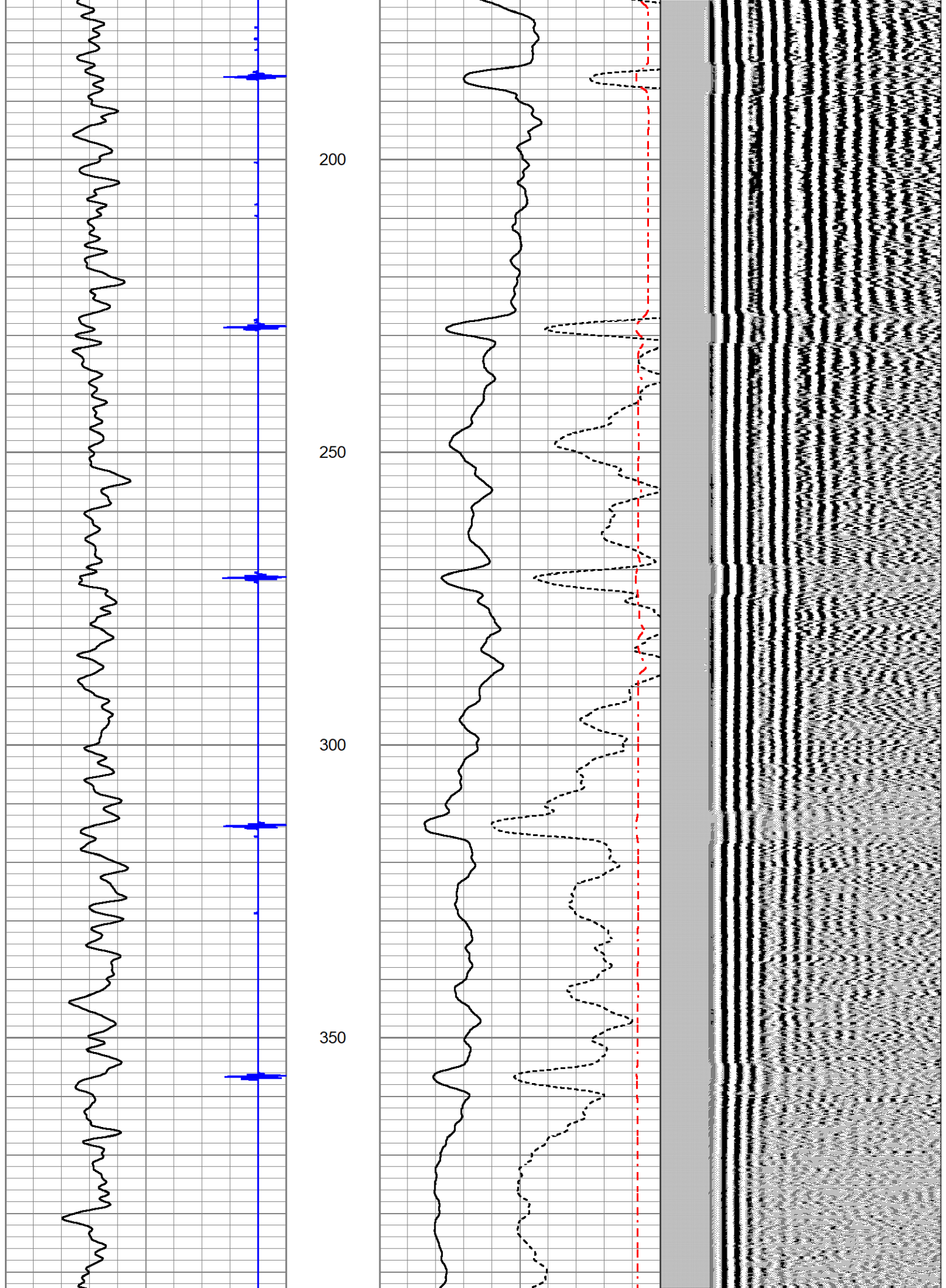
Database File monfortgilcrestk09-13\_6-19-19\_noble\_cbl.db  
 Dataset Pathname pass4  
 Presentation Format cbl\_dr  
 Dataset Creation Wed Jun 19 16:41:17 2019  
 Charted by Depth in Feet scaled 1:240

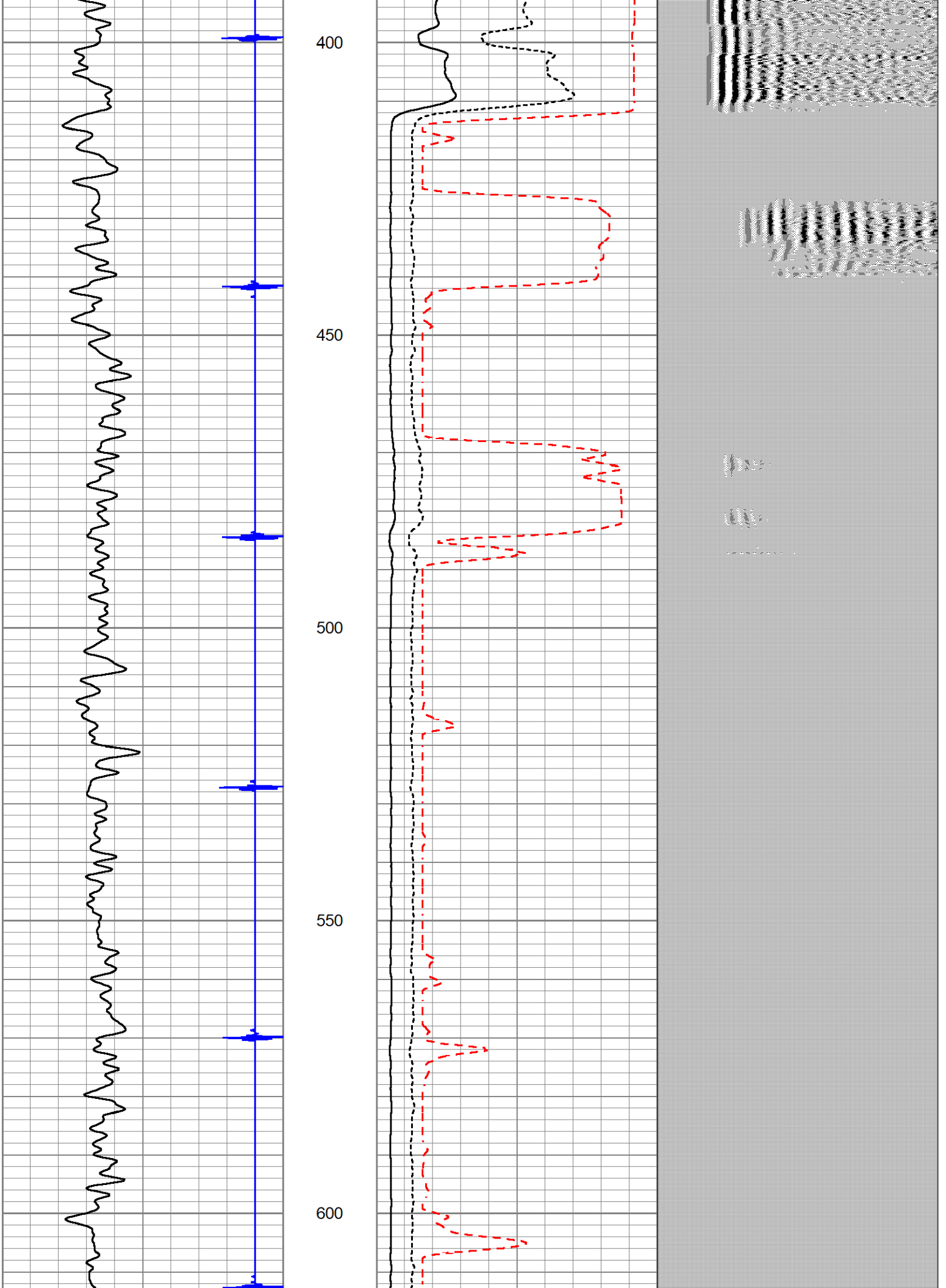
9	Collar Locator	-1
0	Gamma Ray (GAPI)	250
0	Line Speed (ft/min)	-100

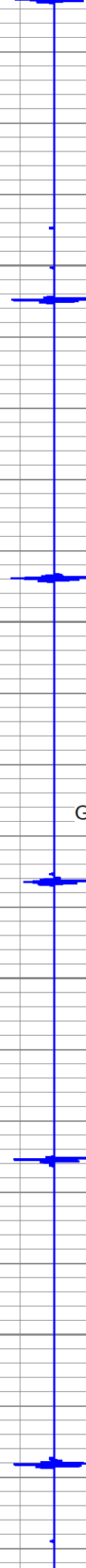
0	Amplified Amplitude (mV)	40
0	Amplitude (mV)	100
1200	TT3FT (usec)	200

200 VDL (usec) 1200









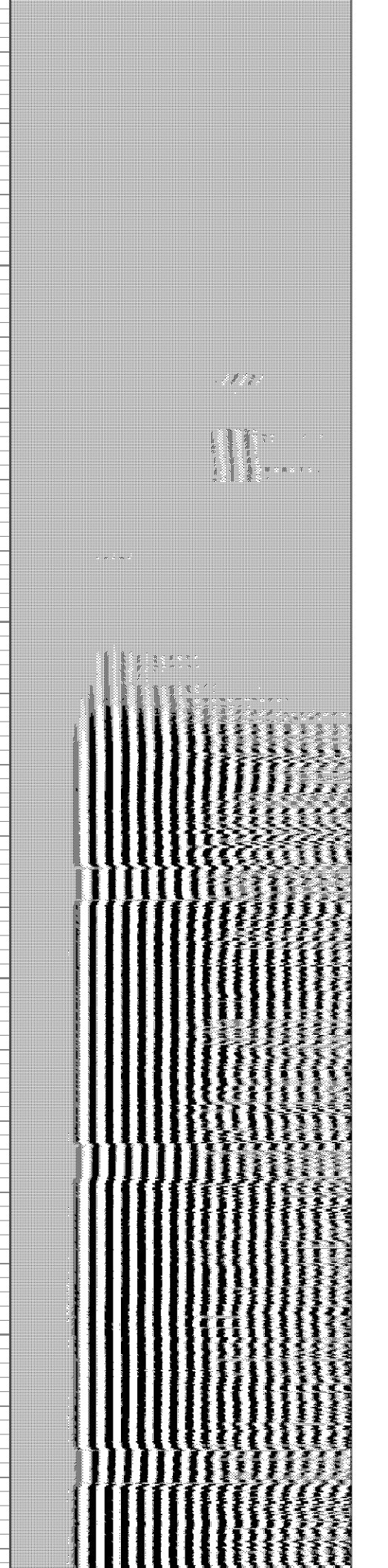
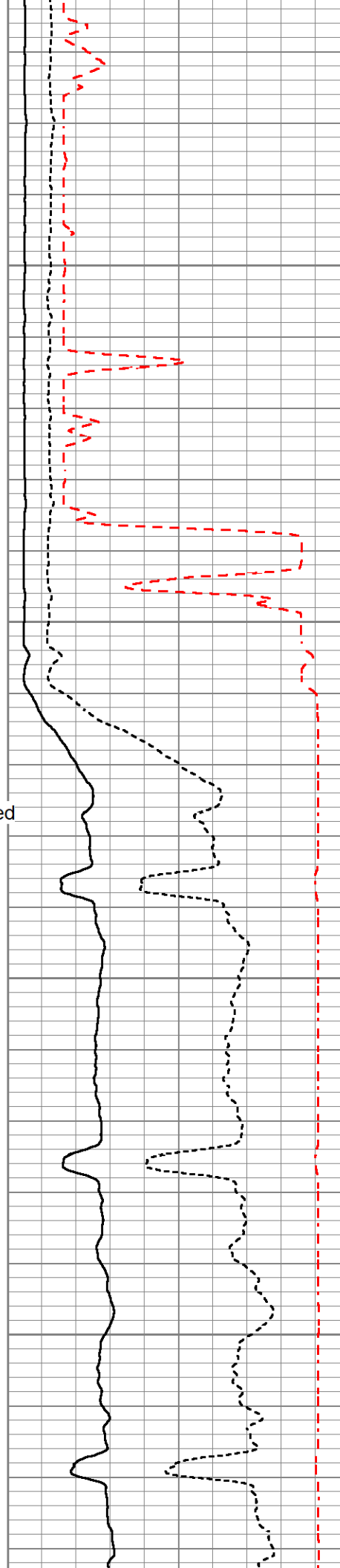
650

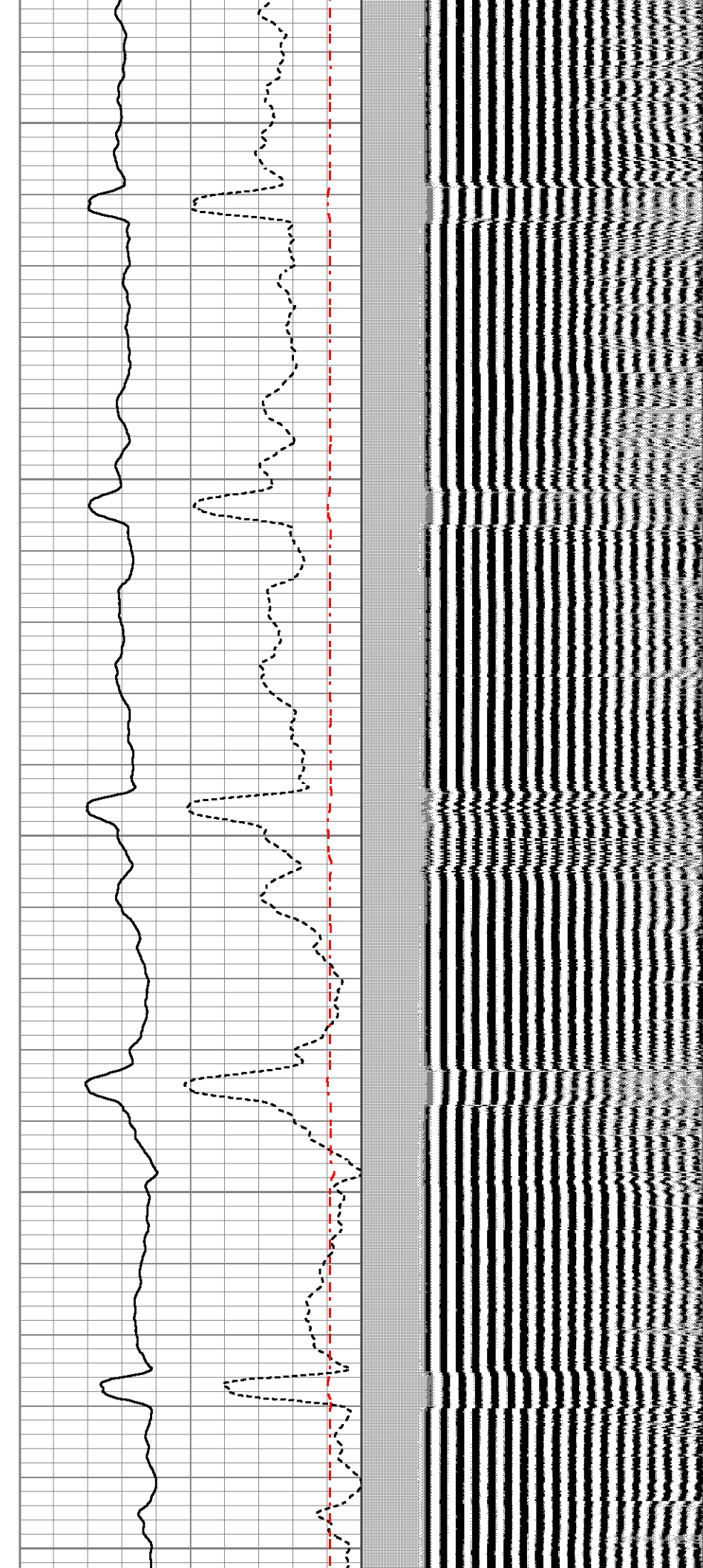
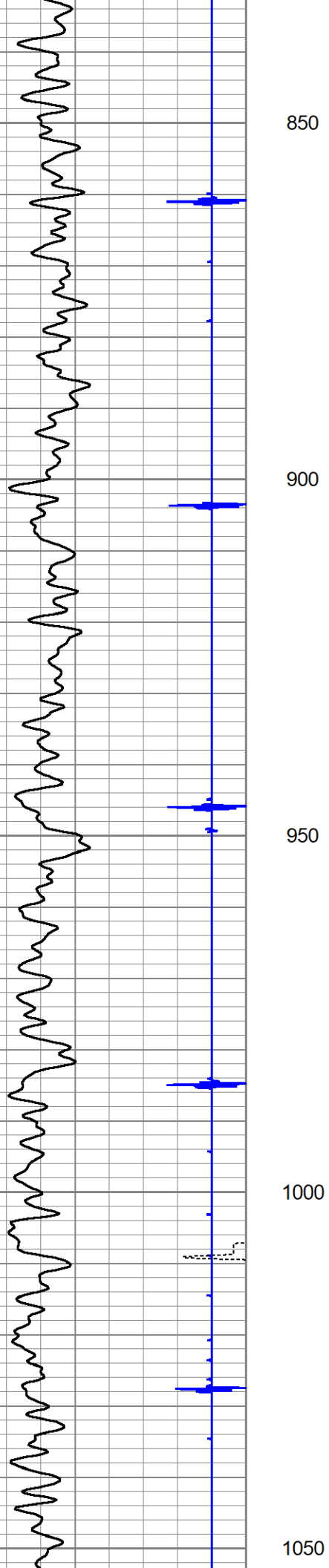
700

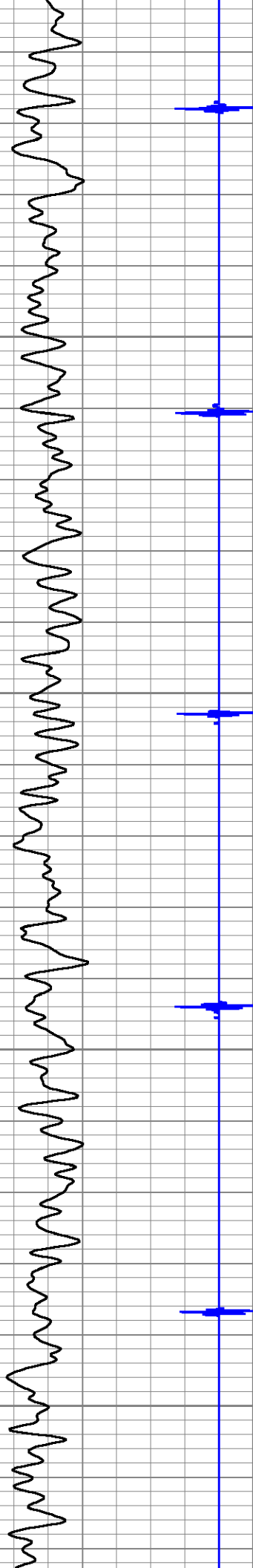
↑  
Gas Suspected

750

800





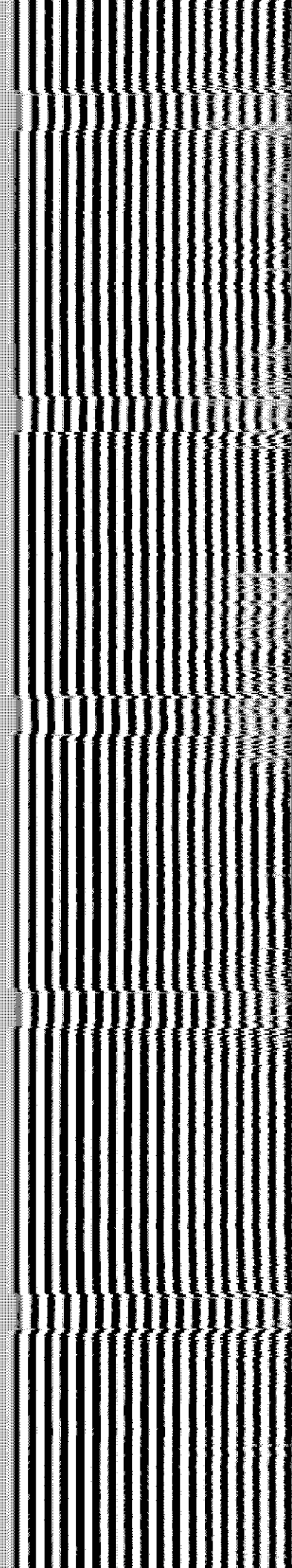
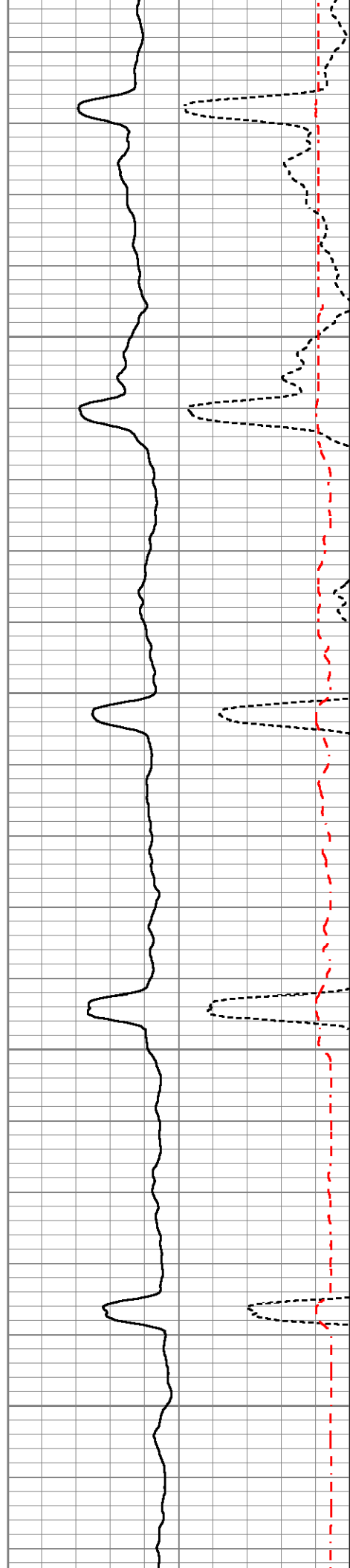


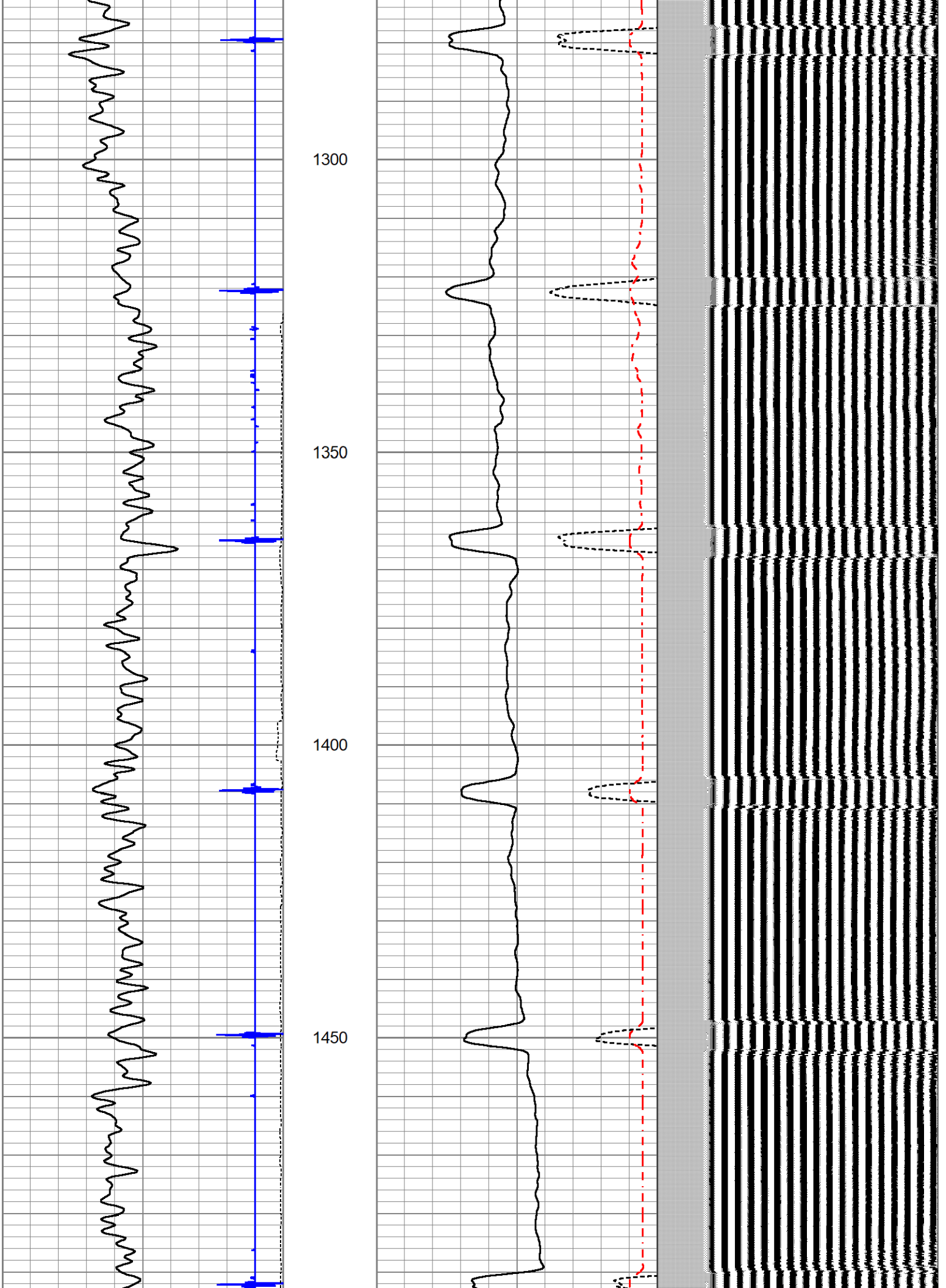
1100

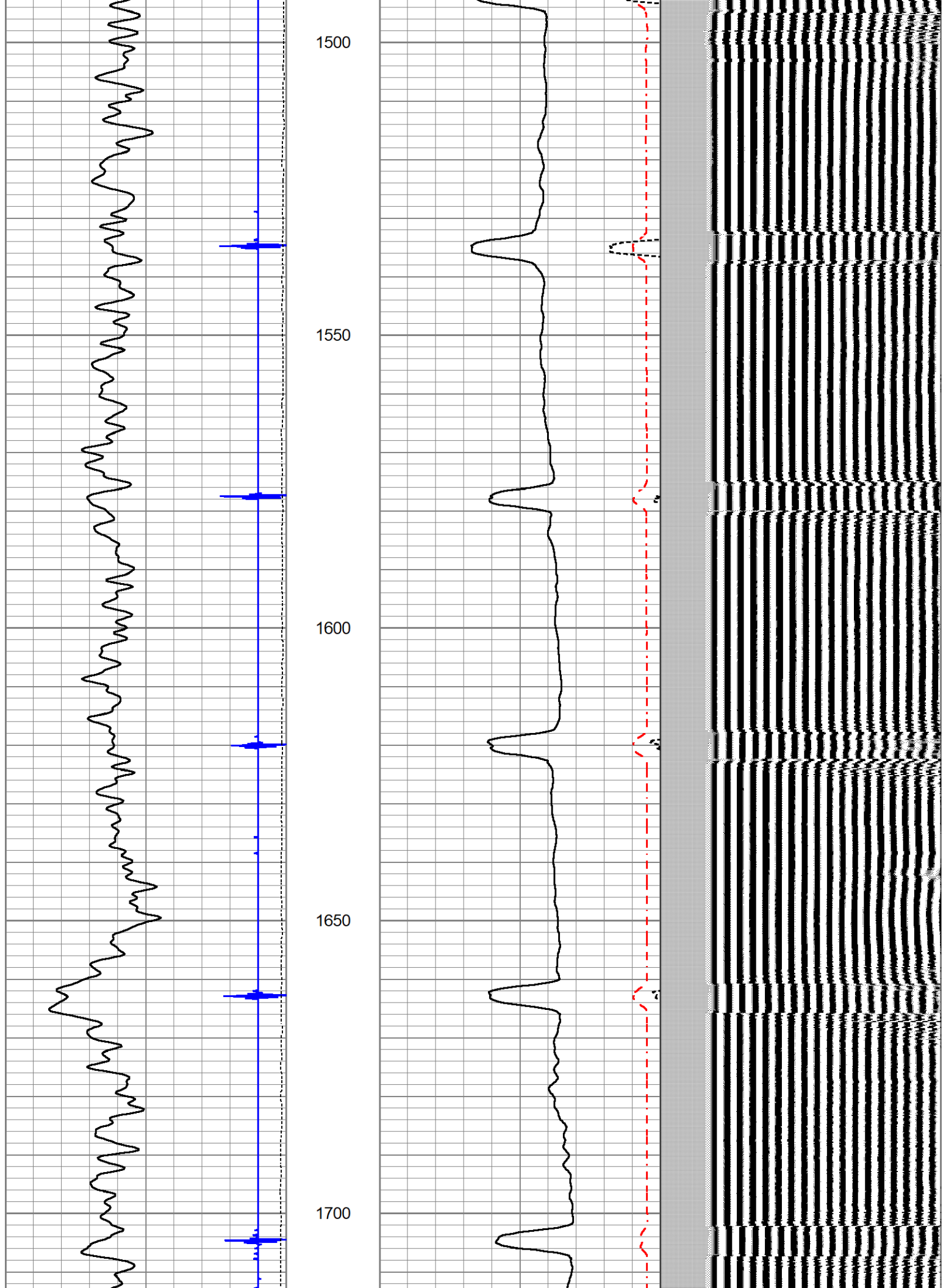
1150

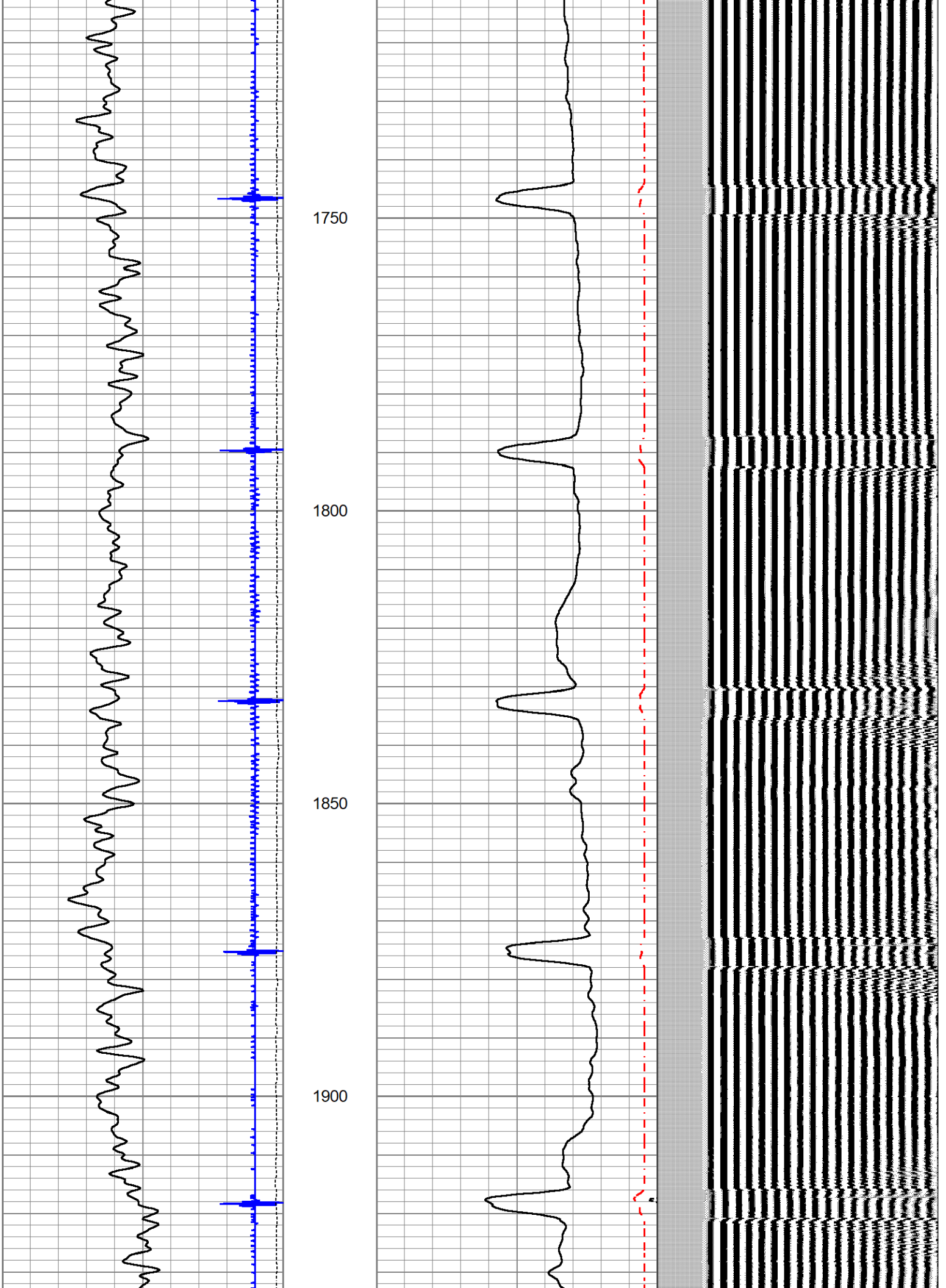
1200

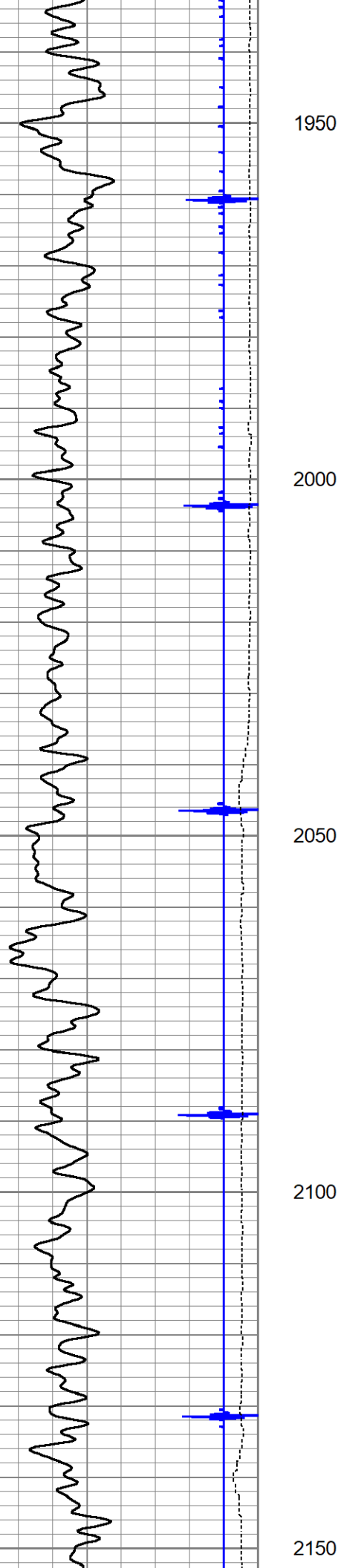
1250











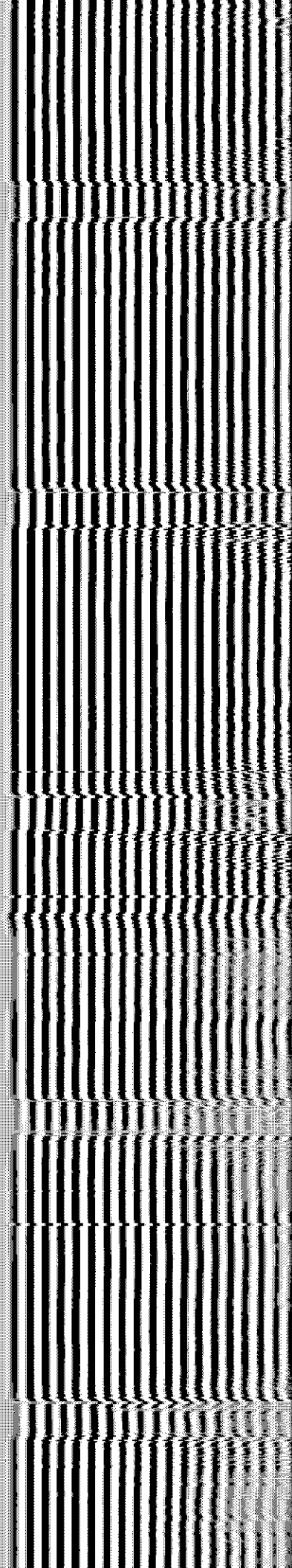
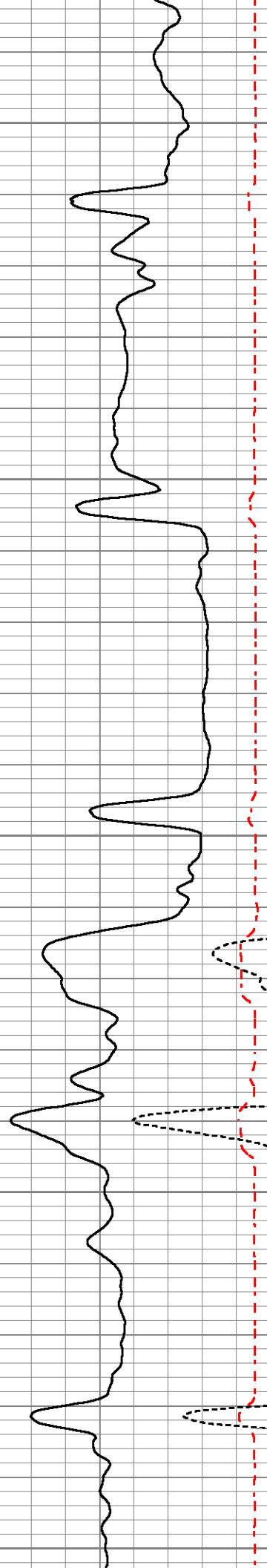
1950

2000

2050

2100

2150



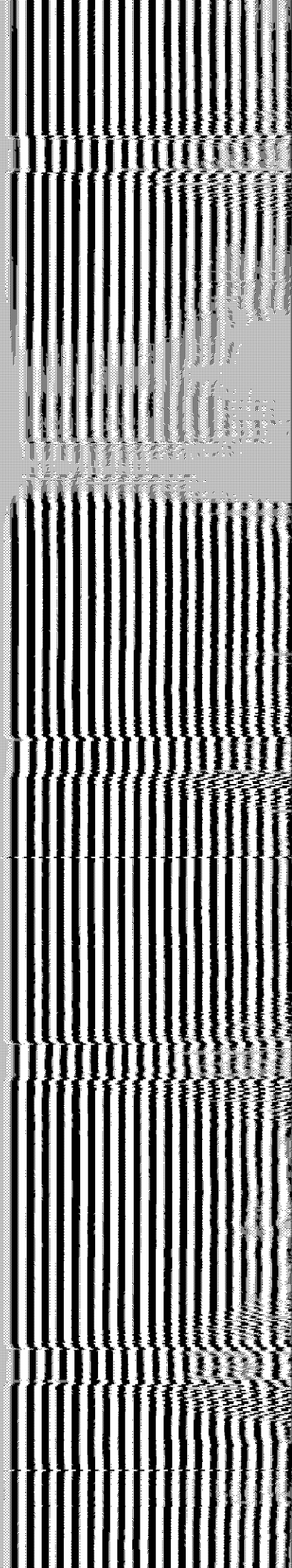
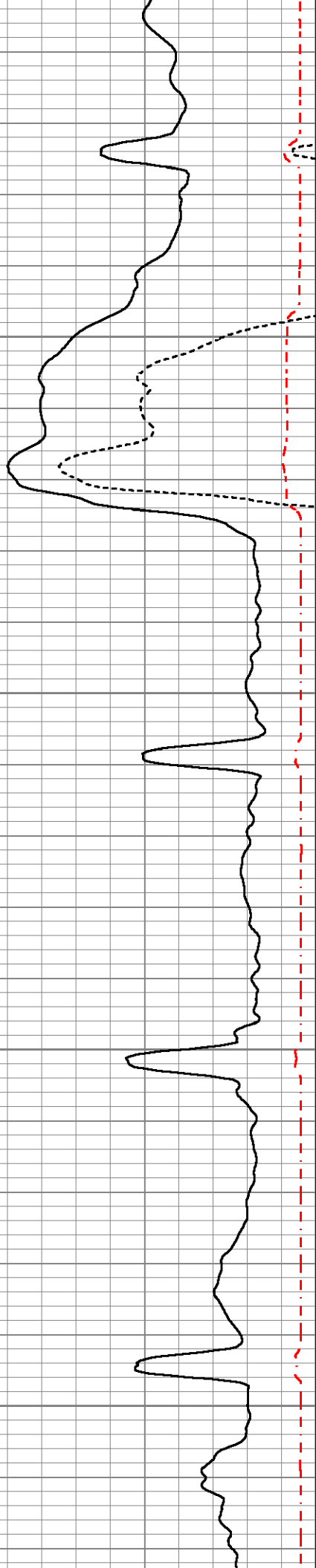


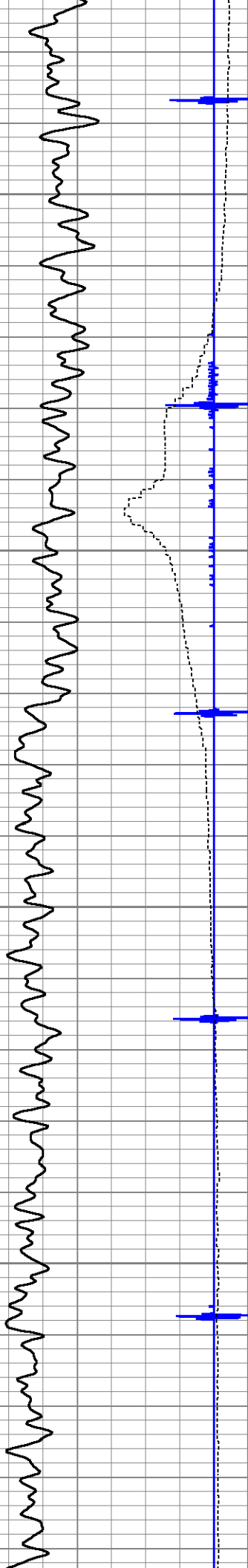
2200

2250

2300

2350



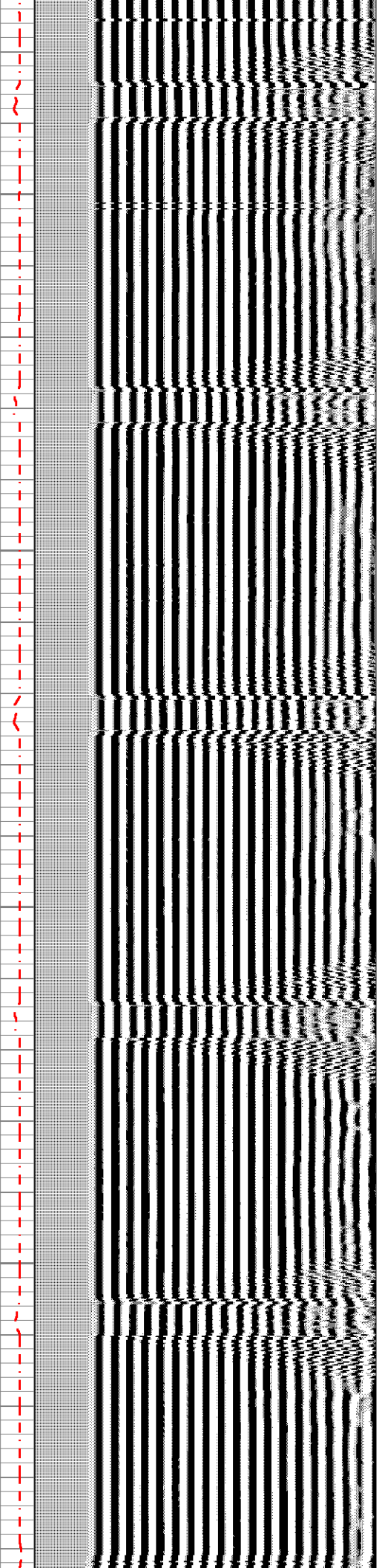


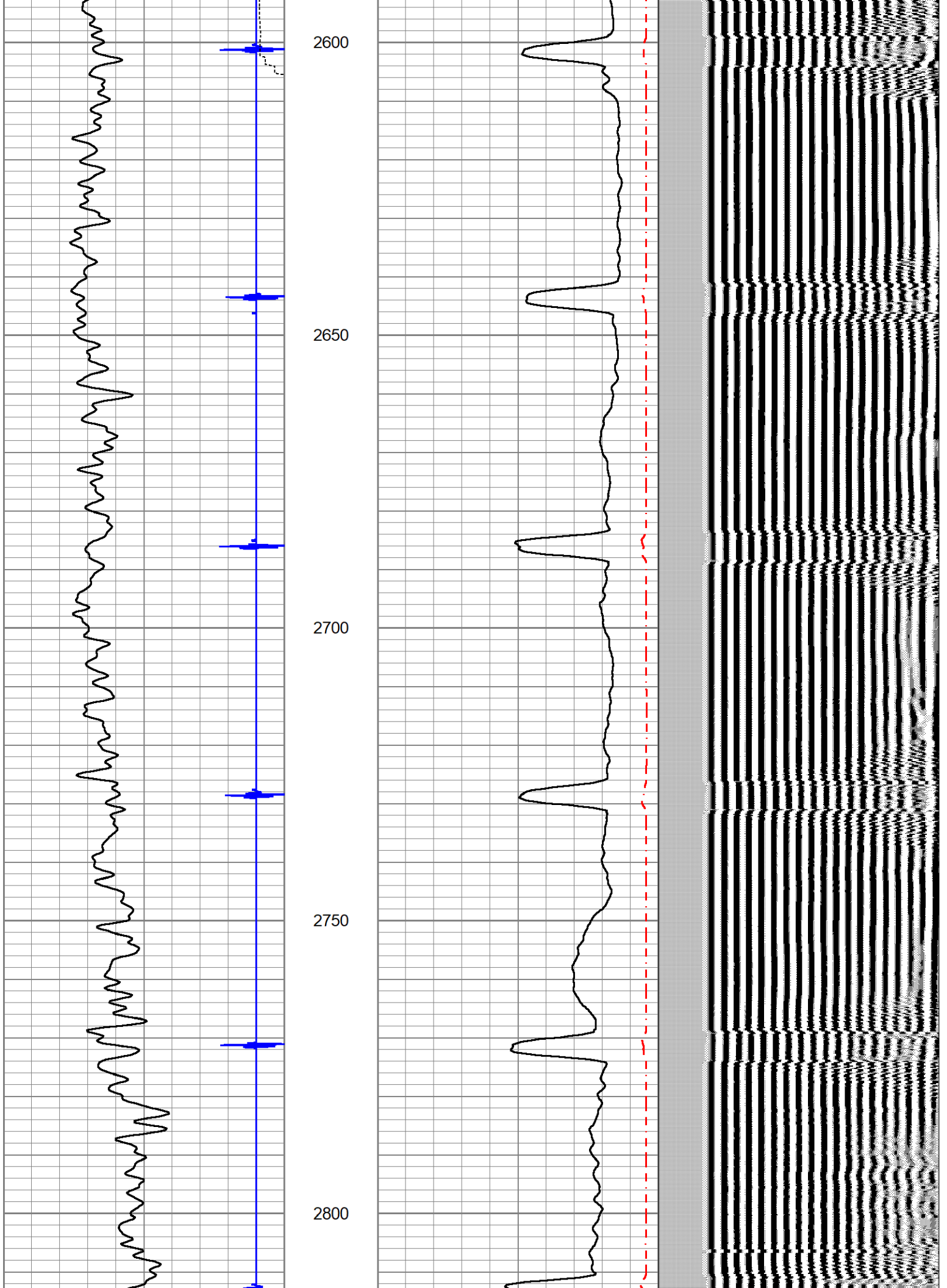
2400

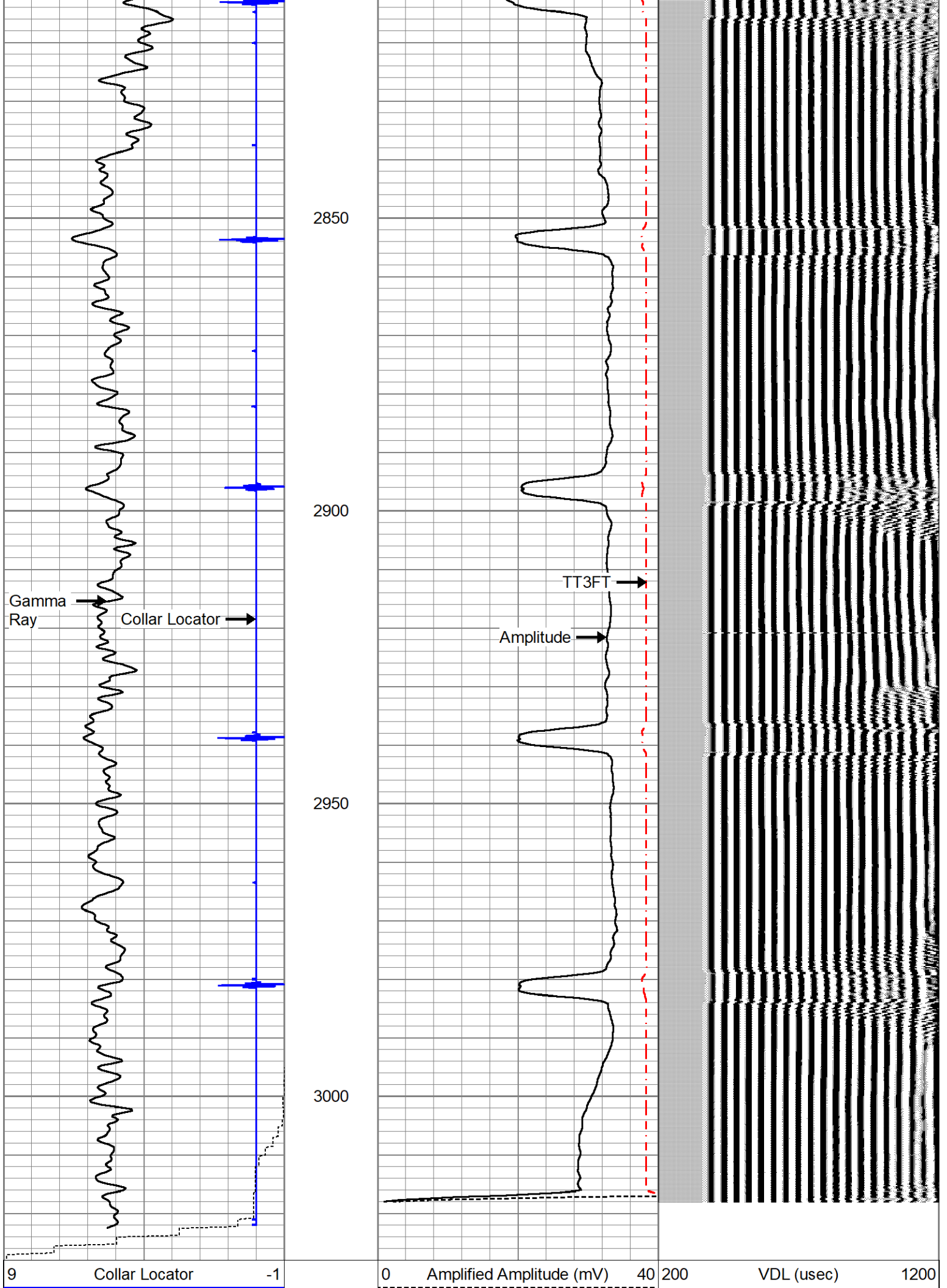
2450

2500

2550







0	Gamma Ray (GAPI)	250
0	Line Speed (ft/min)	-100

0	Amplified Amplitude (mV)	100
1200	TT3FT (usec)	200



# 4.5" REPEAT PASS

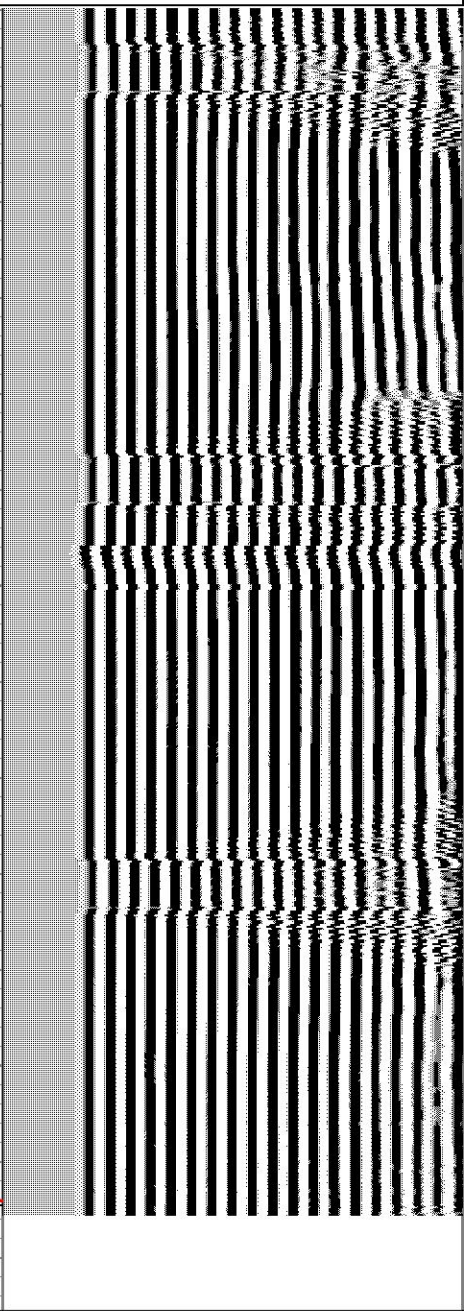
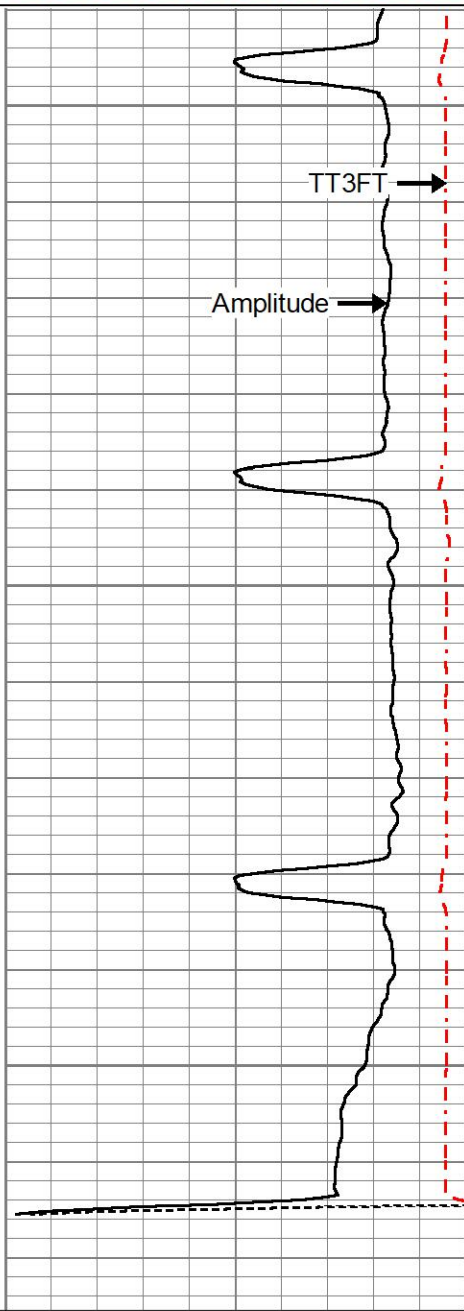
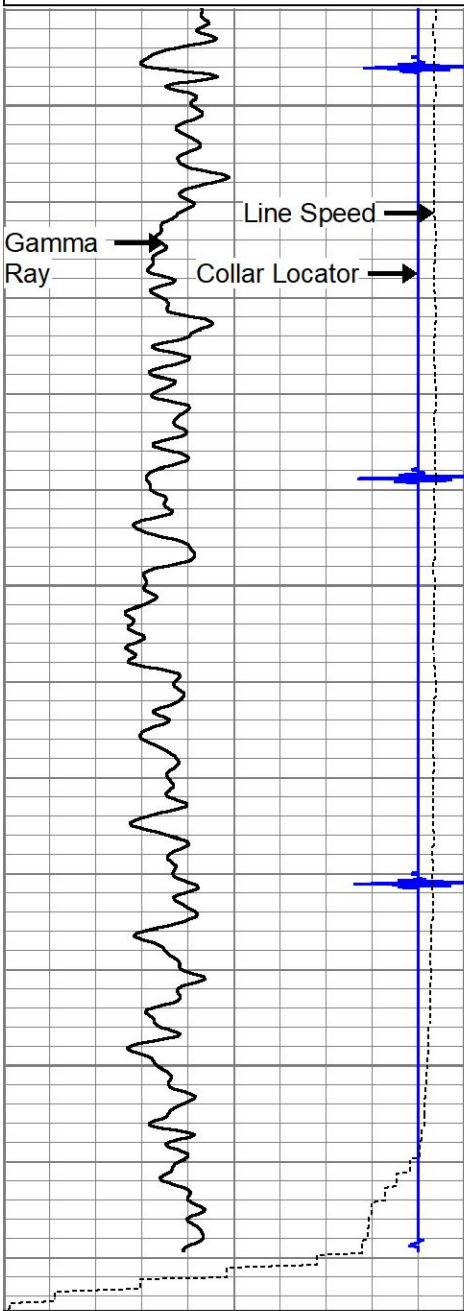
LOG RAN WITH 0 PSI SURFACE INDUCED PRESSURE

Database File monfortgilcrestk09-13\_6-19-19\_noble\_cbl.db  
 Dataset Pathname pass3  
 Presentation Format cbl\_dr  
 Dataset Creation Wed Jun 19 16:38:56 2019  
 Charted by Depth in Feet scaled 1:240

9	Collar Locator	-1
0	Gamma Ray (GAPI)	250
0	Line Speed (ft/min)	-100

0	Amplified Amplitude (mV)	40
0	Amplitude (mV)	100
1200	TT3FT (usec)	200

200	VDL (usec)	1200
-----	------------	------



9	Collar Locator	-1
0	Gamma Ray (GAPI)	250
0	Line Speed (ft/min)	100

0	Amplified Amplitude (mV)	40
0	Amplitude (mV)	100
1200	TT3FT (usec)	200

200	VDL (usec)	1200
-----	------------	------

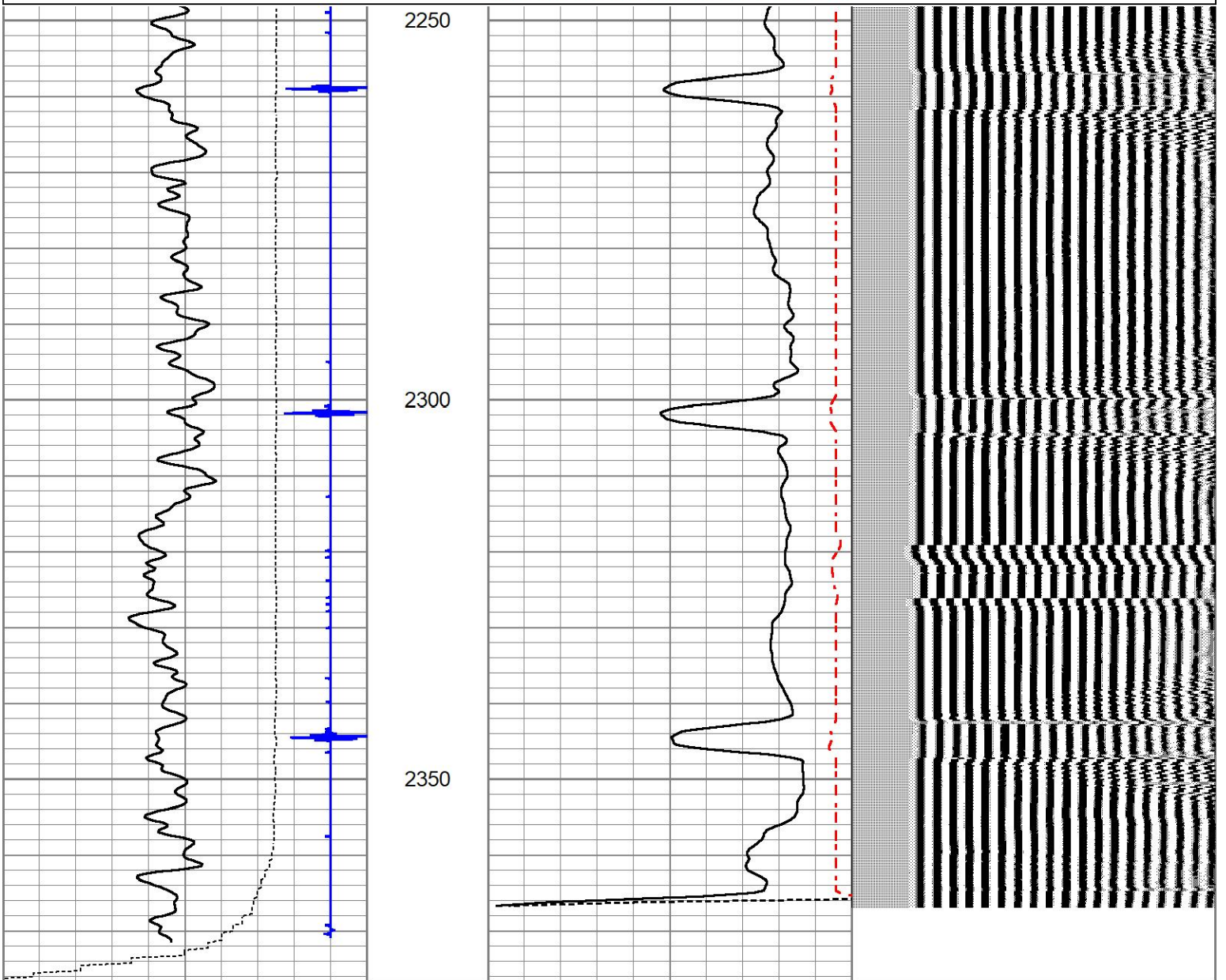


# 4.5" FREE PIPE

## FREE PIPE CAL @ 2330'

Database File monfortgilcrestk09-13\_6-19-19\_noble\_cbl.db  
 Dataset Pathname pass2  
 Presentation Format cbl\_dr  
 Dataset Creation Wed Jun 19 16:33:21 2019  
 Charted by Depth in Feet scaled 1:240

9	Collar Locator	-1	0	Amplified Amplitude (mV)	40	200	VDL (usec)	1200
0	Gamma Ray (GAPI)	250	0	Amplitude (mV)	100			
0	Line Speed (ft/min)	-100	1200	TT3FT (usec)	200			



9	Collar Locator	-1	0	Amplified Amplitude (mV)	40	200	VDL (usec)	1200
0	Gamma Ray (GAPI)	250	0	Amplitude (mV)	100			
0	Line Speed (ft/min)	-100	1200	TT3FT (usec)	200			

Gamma Ray Calibration Report

Serial Number: 275  
 Tool Model: Probe  
 Performed: Thu May 09 10:03:43 2013

Calibrator Value: 1.0 GAPI

Background Reading: 0.0 cps  
 Calibrator Reading: 1.0 cps

Sensitivity: 1.0000 GAPI/cps

Segmented Cement Bond Log Calibration Report

Serial Number: 275  
 Tool Model: Probe

Calibration Casing Diameter: 4.600 in  
 Calibration Depth: 2329.383 ft

Master Calibration, performed Wed Jun 19 16:32:35 2019:

	Raw (v)		Calibrated (mv)		Results	
	Zero	Cal	Zero	Cal	Gain	Offset
3'	0.006	0.411	0.450	80.125	196.766	-0.785
CAL						
5'	0.040	0.293	0.450	80.125	315.007	-12.305
SUM						
S1						
S2						
S3						
S4						
S5						
S6						
S7						
S8						

Internal Reference Calibration, performed (Not Performed):

	Raw (v)		Calibrated (v)		Results	
	Zero	Cal	Zero	Cal	Gain	Offset
CAL						

Air Zero Calibration, performed Wed May 29 09:39:27 2019:

	Raw (v)		Calibrated (v)		Results	
	Zero		Zero		Offset	
3'	0.000		0.000		0.000	
5'	0.000		0.000		0.000	
SUM						
S1						
S2						
S3						
S4						
S5						

S6  
S7  
S8

# Log Variables

DatabaseC:\ProgramData\Warrior\Data\monfortgilcrestk09-13\_6-19-19\_noble\_cbl.db  
Dataset field/well/run1/pass4/\_vars\_

## Top - Bottom

BOREID in 7.875	BOTTEMP degF 150	CASEOD in 4.6	CASETHCK in 0	CASEWGHT lb/ft 11.6	MAXAMPL mV 0	MINAMPL mV 1	MINATTN db/ft 0.8
PERFS 0	PPT usec 0	SRFTEMP degF 0	TDEPTH ft 0				

## Variable Description

BOREID : Borehole I.D.

BOTTEMP : Bottom Hole Temperature

CASEOD : Casing O.D.

CASETHCK : Casing Thickness

CASEWGHT : Casing Weight

MAXAMPL : Maximum Amplitude

MINAMPL : Minimum Amplitude

MINATTN : Minimum Attenuation

PERFS : Perforation Flag

PPT : Predicted Pipe Time

SRFTEMP : Surface Temperature

TDEPTH : Total Depth



Company NOBLE ENERGY

Well MONFORT GILCREST K09-13

Field WATTENBERG

County WELD

State COLORADO

Country USA