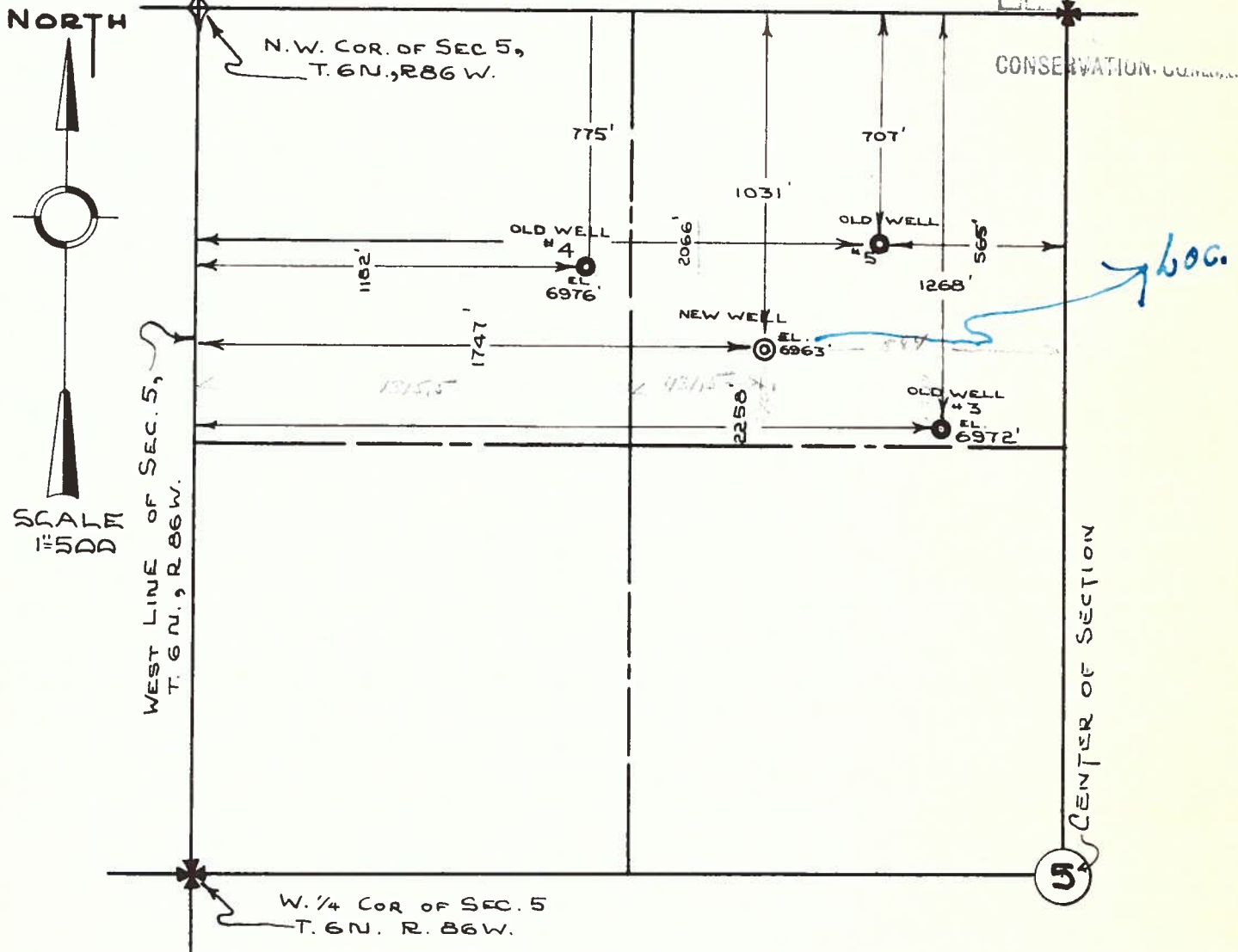
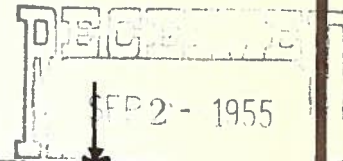


CABEEN EXPLORATION COMPANY.

*Kurt O. Linn*

JEFFERSON COUNTY SURVEYOR  
LAKEWOOD, COLO. PHONE-BE 3-1171



**CERTIFICATE**

I CERTIFY THAT ON AUGUST 22-24, 1955, I SURVEYED THE LOCATIONS OF 4 WELLS SITUATED IN THE NORTH 1/2 OF THE NORTHWEST 1/4 OF SECTION 5, TOWNSHIP 6 NORTH, RANGE 86 WEST OF THE 6TH PRINCIPAL MERIDIAN, ROUTT COUNTY, COLORADO.

THE ABOVE PLAT ACCURATELY REPRESENTS THE DESCRIBED SURVEYS, AND THE SEVERAL WELL LOCATIONS ARE ACCURATELY SHOWN THEREON IN RELATIONSHIP WITH THE LEGAL LAND LINES AS INDICATED.

AUGUST 31, 1955.

*Kurt O. Linn*  
KURT O. LINN