

Inspection Photos
Operator: BP America
API: 067-07059
Date: 9/15/2020



Photo 1. View of the project area from the northeastern corner facing center.



Photo 2. View of the southern fill slope from the southeastern corner facing westward. Revegetation is progressing within the interim reclamation area, largely with grasses such as western wheatgrass, smooth brome, and sand dropseed.

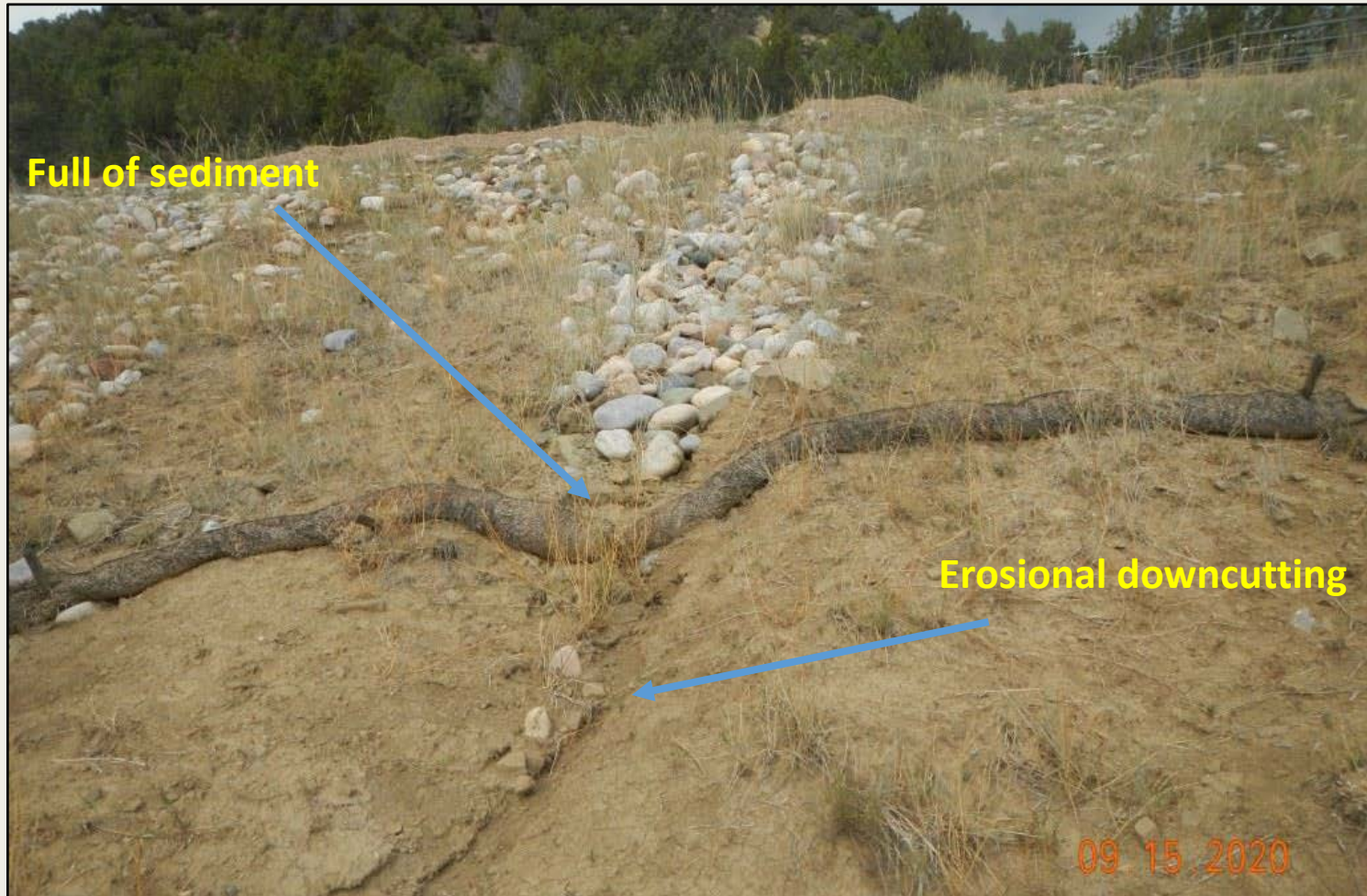


Photo 3. View of BMPs within the southern fill slope. Wattles are full of sediment. Erosional downcutting is continuing downstream from the wattles.



Photo 4. View of eastern stormwater diversion. Stormwater controls need to be installed to de-energize stormwater flowing through the channel and over the banks. Channel is eroding in width and depth (approx. 5-6 ft wide and 4-5 feet deep).



Photo 5. View of reference area vegetation comprised of pinyon and juniper woodland with shrubs and forbs in the understory such as big sagebrush, gambel oak, buckwheat, and Indian ricegrass.



Photos 6/75. Locked gate coming in (left) and leaving (right).