

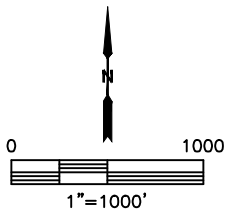
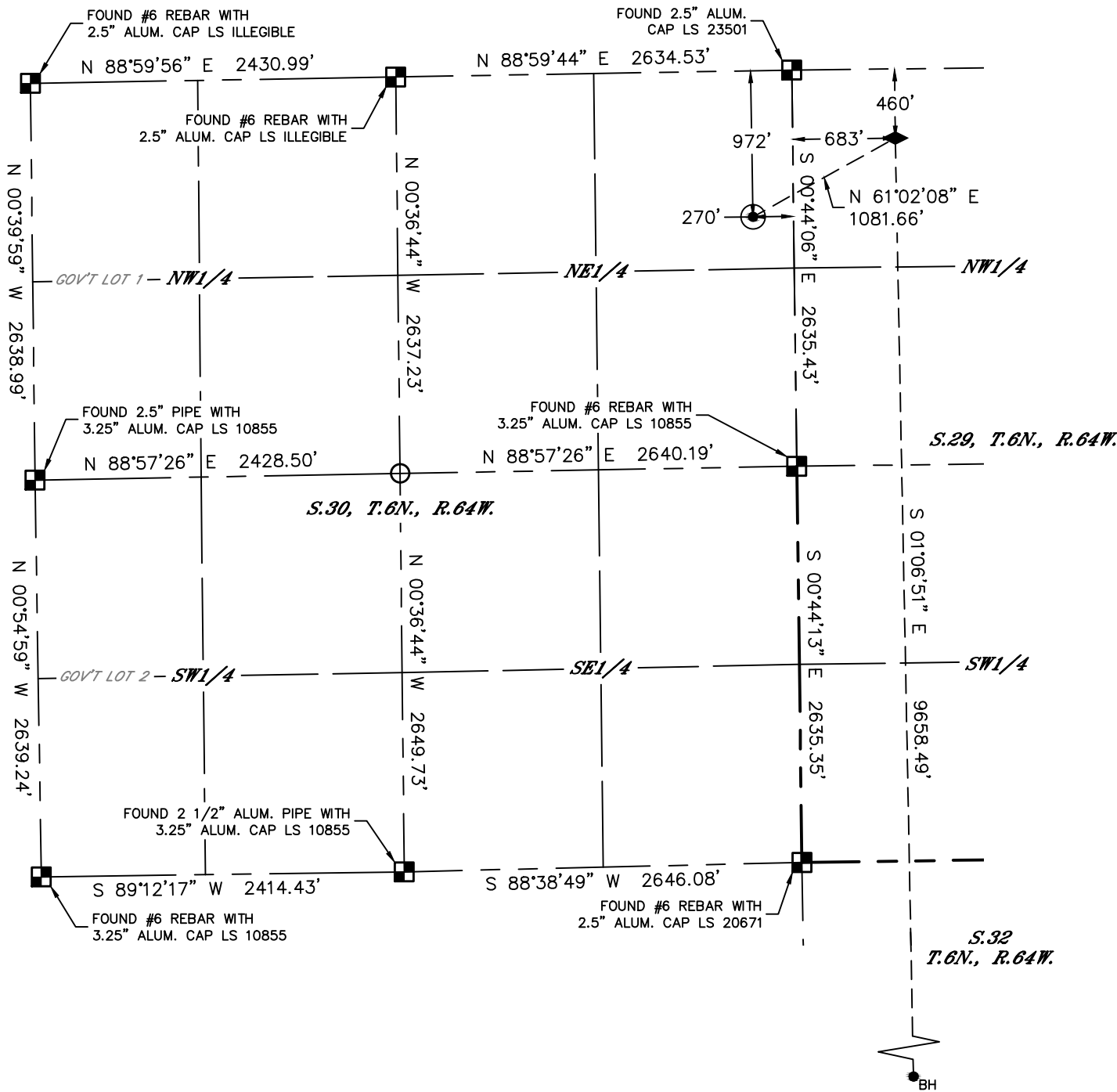


Lat40°, Inc. 6250 W. 10th Street, Unit 2, Greeley, CO 970-515-5294

WELL LOCATION CERTIFICATE

ROTH A32-779

SECTION: 30
TOWNSHIP: 6N
RANGE: 64W
6TH. P.M.
WELD COUNTY, CO



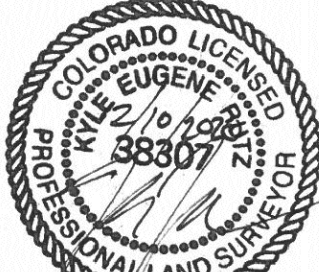
| CLIENT: NOBLE ENERGY, INC. | | | | | | | LANDMAN: TONY BALL | | |
|---------------------------------------|-----|-----|-----|-----------|------------|----------|------------------------|-------------|------------------------|
| INSTRUMENT OPERATOR: DUNCAN HOTCHKISS | | | | | | | SURVEY DATE: 1/30/2020 | | SURFACE USE: CROP LAND |
| SHL FOOTAGE | | | | SHL LAT ° | SHL LONG ° | SHL PDOP | SHL ELEV (FT.) | SHL 1/4/1/4 | SHL S-T-R |
| 972 | FNL | 270 | FEL | 40.46155 | -104.58466 | 1.2 | 4698 | NENE | 30-6-64 |

| BHL FOOTAGE | | | | BHL LAT ° | BHL LONG ° | BHL S-T-R | TPZ LAT ° | TPZ LONG ° | TPZ S-T-R |
|-------------|-----|-----|-----|-----------|------------|-----------|-----------|------------|-----------|
| 460 | FSL | 711 | FWL | 40.43645 | -104.58092 | 32-6-64 | 40.46296 | -104.58124 | 29-6-64 |

| NEAREST EXISTING WELL IN SHL 1/4/1/4 | |
|--------------------------------------|----------|
| EXISTING WELL | N/A |
| NEAREST CULTURAL ITEMS | |
| BUILDING | ±962' NE |
| BUILDING UNIT | ±842' NE |
| HIGH OCCUPANCY BUILDING UNIT | 5280'+ |
| SCHOOL FACILITY | 5280'+ |
| SCHOOL PROPERTY LINE | 5280'+ |
| CHILD CARE CENTER | 5280'+ |
| DESIGNATED OUTSIDE ACTIVITY AREA | 5280'+ |
| PUBLIC ROAD (COUNTY ROAD 51) | ±257' E |
| ABOVE GROUND UTILITY | ±243' E |
| RAILROAD | 5280'+ |
| PROPERTY LINE | ±270' E |

NOTE:
1) Bearings shown are Grid Bearings of the Colorado State Plane Coordinate System, North Zone, North American Datum 1983. The lineal dimensions as contained herein are based upon the "U.S. Survey Foot."
2) Distances to section lines measured at 90 degrees from said section lines.
3) Ground elevations are based on an observed GPS elevation (NAVD 1988 DATUM).
4) Latitude and Longitude shown are (NAD 83 DATUM).
5) IMPROVEMENTS: See LOCATION DRAWING for all visible improvements within 500' of oil and gas location.
6) This map does not represent a boundary survey.

- LEGEND
- = ALIQUOT MONUMENT AS DESCRIBED
 - = CALCULATED POSITION
 - ⊙ = SURFACE HOLE LOCATION (SHL)
 - ◆ = TOP OF PRODUCTION ZONE (TPZ)
 - _{BH} = BOTTOM HOLE LOCATION (BHL)
 - ⊕ = EXISTING WELL
 - ⊗ = ABANDONED WELL



SHEET 1 OF 2
Kyle E. Rutz—On behalf of Lat40°, Inc.
Colorado Licensed Professional Land Surveyor No. 38307
DATE: 2/10/2020
PROJECT#: 2018024

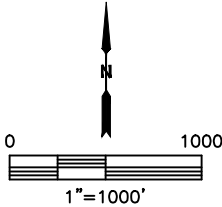
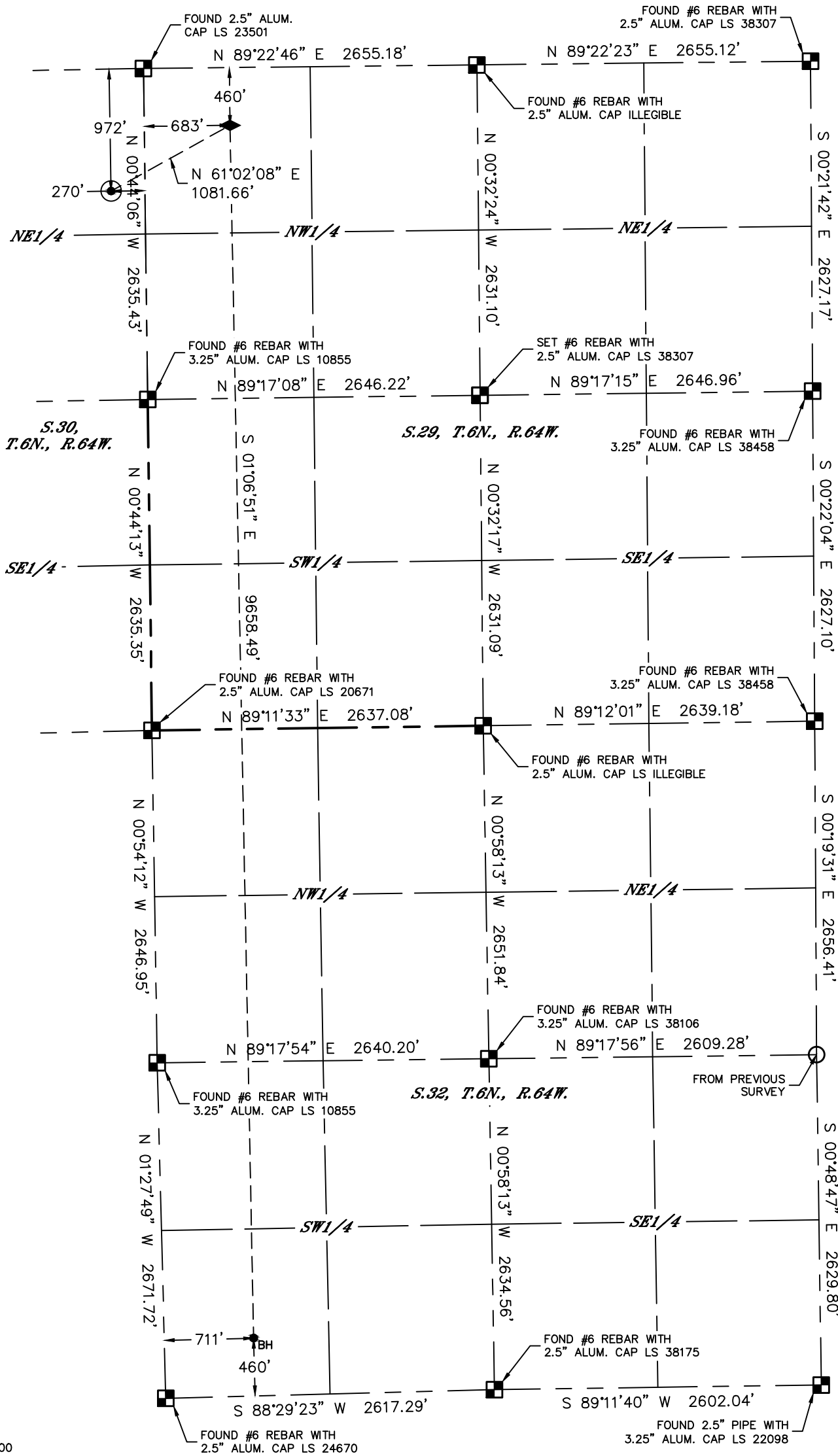


Lat40°, Inc. 6250 W. 10th Street, Unit 2, Greeley, CO 970-515-5294

WELL LOCATION CERTIFICATE

ROTH A32-779

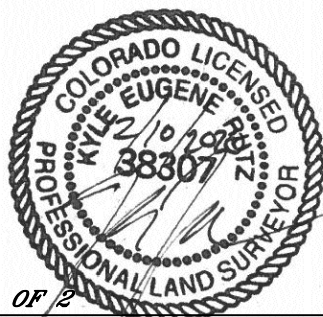
SECTION: 30
TOWNSHIP: 6N
RANGE: 64W
6TH. P.M.
WELD COUNTY, CO



- LEGEND
- = ALIQUOT MONUMENT AS DESCRIBED
 - = CALCULATED POSITION
 - = SURFACE HOLE LOCATION (SHL)
 - ◆ = TOP OF PRODUCTION ZONE (TPZ)
 - ⊙ = BOTTOM HOLE LOCATION (BHL)
 - ⊙ = EXISTING WELL
 - ⊙ = ABANDONED WELL

NOTE:

- 1) Bearings shown are Grid Bearings of the Colorado State Plane Coordinate System, North Zone, North American Datum 1983. The lineal dimensions as contained herein are based upon the "U.S. Survey Foot."
- 2) Distances to section lines measured at 90 degrees from said section lines.
- 3) Ground elevations are based on an observed GPS elevation (NAVD 1988 DATUM).
- 4) Latitude and Longitude shown are (NAD 83 DATUM).
- 5) IMPROVEMENTS: See LOCATION DRAWING for all visible improvements within 500' of oil and gas location.
- 6) This map does not represent a boundary survey.



SHEET 2 OF 2
Kyle E. Rutz—On behalf of Lat40°, Inc.
Colorado Licensed Professional Land Surveyor No. 38307
DATE: 2/10/2020
PROJECT#: 2018024