

Location:	COLORADO	Slot:	SLOT#04 STATE PRONGHORN FEDERAL D14-X44-30HNB (2213FSL & 610FWLSEC.30)
Field:	WELD COUNTY (NAD83/TRUE)	Well:	STATE PRONGHORN FEDERAL D14-X44-30HNB
Facility:	SEC.30-T05N-R61W	Wellbore:	STATE PRONGHORN FEDERAL D14-X44-30HNB PWB
Plot reference wellpath is STATE PRONGHORN FEDERAL D14-X44-30HNB (REV-D.0) PWP		Grid System: NAD83 / Lambert Colorado SP, North Zone (501), US feet	
True vertical depths are referenced to RIG (17) (4526GL+17KB@4543) (RKB)		North Reference: True north	
Measured depths are referenced to RIG (17) (4526GL+17KB@4543) (RKB)		Scale: True distance	
RIG (17) (4526GL+17KB@4543) (RKB) to Mean Sea Level: 4543 feet		Depths are in feet	
Mean Sea Level to Ground level (N Slot: SLOT#04 STATE PRONGHORN FEDERAL D14-X44-30HNB (2213FSL & 610FWLSEC.30): 0 feet		Created by: haniab on 2019-07-29	
Coordinates are in feet referenced to Slot		Database: WellArchiv@B	

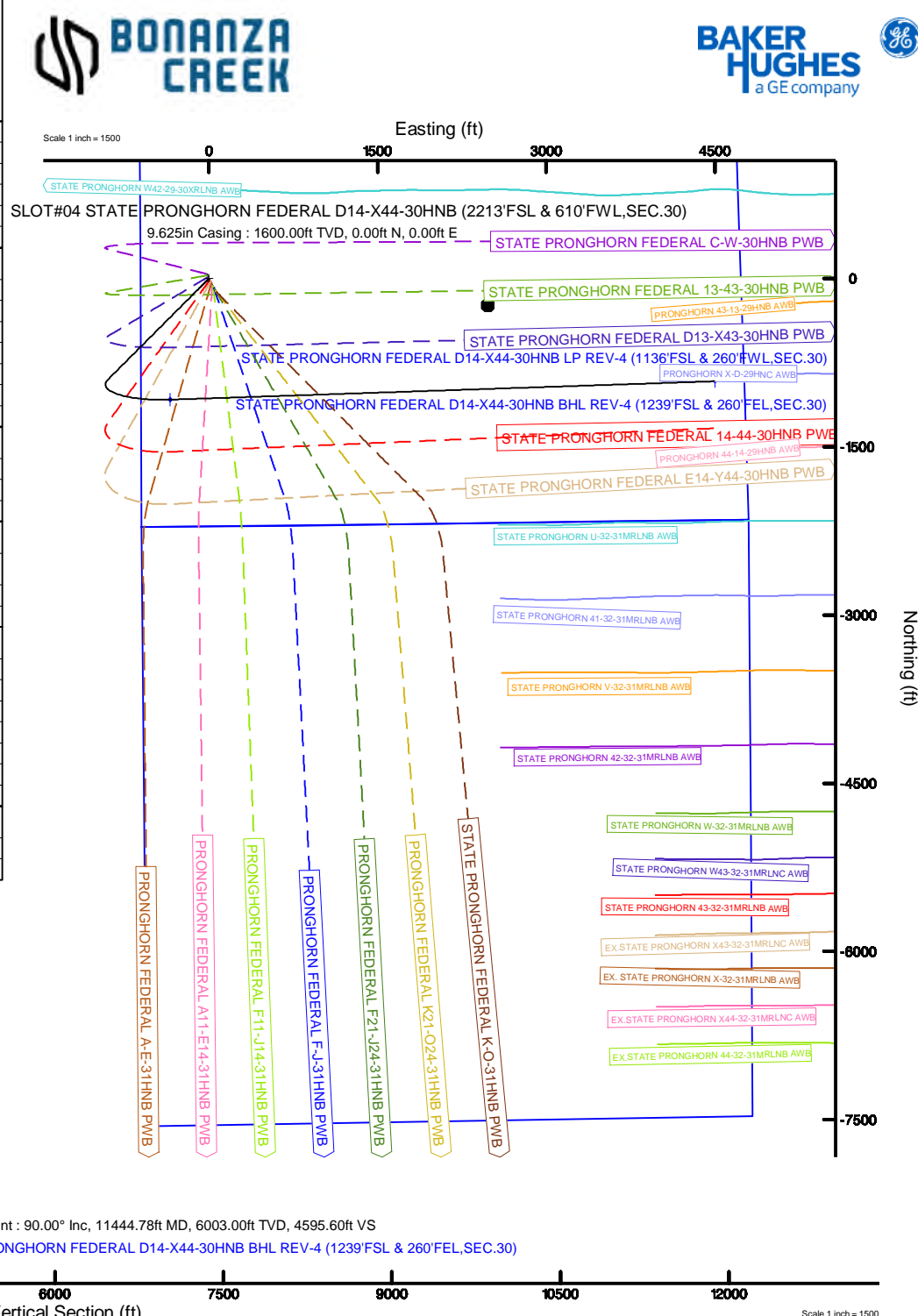
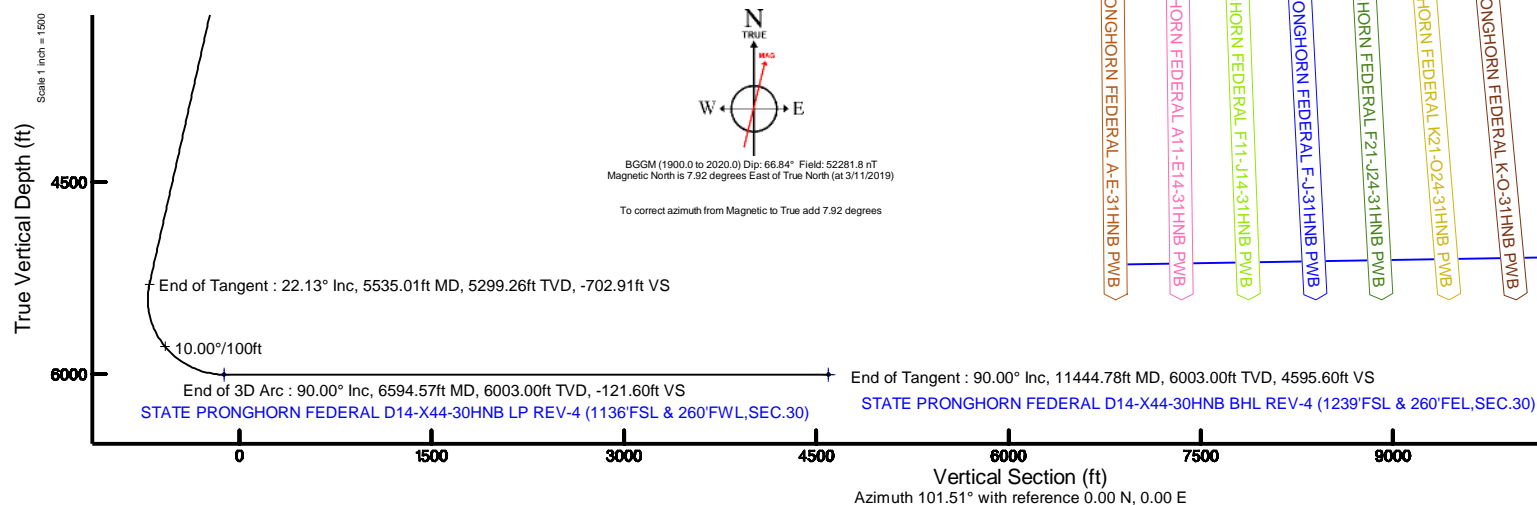
Location Information						
Facility Name			Grid East (U.S. 1)	Grid North (U.S. 1)	Latitude	Longitude
SEC. 30: TONGUE RIVER			13A45251.263	13B0250.726	40° 22' 13.3697N	104° 15' 34.273 W
Site	Local E (F)	Local N (F)	Grid East (U.S. 1)	Grid North (U.S. 1)	Latitude	Longitude
SLOTHKIN STATE PRISON/CHRONIC FEDERAL D14-344-309NB (22137F, & 6107FW, SEC. 30)	-48.68	25.61	13A45561.146	13B0302.416	40° 22' 13.917N	104° 10' 33.942 W
BIG (17) (45250E-17NB-B-4543) (NAB) to Ground Level (At Site: SLOTHKIN STATE PRISON/CHRONIC FEDERAL D14-344-309NB (22137F, & 6107FW, SEC. 30))						4543F1
Mean Sea Level to Ground Level (At Site: SLOTHKIN STATE PRISON/CHRONIC FEDERAL D14-344-309NB (22137F, & 6107FW, SEC. 30))						0F1
BIG (17) (45250E-17NB-B-4543) (NAB) to Mean Sea Level						4543F1

Start MD (ft)	End MD (ft)	Tool	Model	Log Name/Comment	Wellbore
17.00	1600.00	BHI NavTrak	BHI NavTrak (Rotating+Axial Corr)		STATE PRONGHORN FEDERAL D14-X44-30NB PWB
1600.00	11444.78	BHI AutoTrak Curve	BHI AutoTrak Curve (Short)		STATE PRONGHORN FEDERAL D14-X44-30NB PWB

Name	Start MD (ft)	End MD (ft)	Interval (ft)	Start TVD (ft)	End TVD (ft)	Start Local N (ft)	Start Local E (ft)	End Local N (ft)	End Local E (ft)	Wellbore
9.625in Casing	17.00	1600.00	1583.00	17.00	1600.00	0.00	0.00	0.00	0.00	STATE PRONGHORN FEDERAL D14-X4-30HNB PWB
8.5in Open Hole	1600.00	11444.78	9844.78	1600.00	6003.00	0.00	0.00	-917.21	4503.14	STATE PRONGHORN FEDERAL D14-X4-30HNB PWB

Design Comment	MD (ft)	Inc (°)	Az (°)	TVD (ft)	Local N (ft)	Local E (ft)	DLS (°/100ft)	VS (ft)
Tie On	17.00	0.000	224.917	17.00	0.00	0.00	0.00	0.00
End of Tangent	1600.00	0.000	224.917	1600.00	0.00	0.00	0.00	0.00
End of Build	2706.69	22.134	224.917	2679.37	-149.50	-149.07	2.00	-116.23
End of Tangent	5535.01	22.134	224.917	5299.26	-904.10	-901.49	0.00	-702.91
End of 3D Arc	6594.57	90.000	88.063	6003.00	-1081.12	-344.31	10.00	-121.60
End of Tangent	11444.78	90.000	88.063	6003.00	-917.21	4503.14	0.00	4595.60

MD (ft)	Inc (°)	Az (°)	TVD (ft)	Local N (ft)	Local E (ft)	Grid East (US ft)	Grid North (US ft)	Latitude	Longitude
11444.78	90.00	88.063	6003.00	-917.21	4503.14	3350166.88	1379348.33	40°22'04.444"N	104°14'35.765"W





# Planned Wellpath Report

STATE PRONGHORN FEDERAL D14-X44-30HNB (REV-D.0) PWP

Page 1 of 7



REFERENCE WELLPATH IDENTIFICATION			
Operator	BONANZA CREEK ENERGY	Slot	SLOT#04 STATE PRONGHORN FEDERAL D14-X44-30HNB (2213'FSL & 610'FWL,SEC.30)
Area	COLORADO	Well	STATE PRONGHORN FEDERAL D14-X44-30HNB
Field	WELD COUNTY (NAD83/TRUE)	Wellbore	STATE PRONGHORN FEDERAL D14-X44-30HNB PWB
Facility	SEC.30-T05N-R61W		

REPORT SETUP INFORMATION			
Projection System	NAD83 / Lambert Colorado SP, Northern Zone (501), US feet	Software System	WellArchitect® 5.1
North Reference	True	User	Bushjamh
Scale	0.999959	Report Generated	3/11/2019 at 12:51:44 PM
Convergence at slot	0.80° East	Database/Source file	Denver/STATE PRONGHORN FEDERAL D14-X44-30HNB (REV-D.0) PWP PR.xml

WELLPATH LOCATION						
	Local coordinates		Grid coordinates		Geographic coordinates	
	North[ft]	East[ft]	Easting[US ft]	Northing[US ft]	Latitude	Longitude
Slot Location	-48.68	25.61	3345651.55	1380202.42	40°22'13.512"N	104°15'33.942"W
Facility Reference Pt			3345625.26	1380250.73	40°22'13.993"N	104°15'34.273"W
Field Reference Pt			3224525.77	1254425.87	40°01'44.400"N	104°41'53.556"W

WELLPATH DATUM			
Calculation method	Minimum curvature	RIG (17') (4526'GL+17'KB@4543') (RKB) to Facility Vertical Datum	4543.00ft
Horizontal Reference Pt	Slot	RIG (17') (4526'GL+17'KB@4543') (RKB) to Mean Sea Level	4543.00ft
Vertical Reference Pt	RIG (17') (4526'GL+17'KB@4543') (RKB)	RIG (17') (4526'GL+17'KB@4543') (RKB) to Ground Level at Slot (SLOT#04 STATE PRONGHORN FEDERAL D14-X44-30HNB (2213'FSL & 610'FWL,SEC.30))	4543.00ft
MD Reference Pt	RIG (17') (4526'GL+17'KB@4543') (RKB)	Section Origin	N 0.00, E 0.00 ft
Field Vertical Reference	Mean Sea Level	Section Azimuth	101.51°



# Planned Wellpath Report

STATE PRONGHORN FEDERAL D14-X44-30HNB (REV-D.0) PWP

Page 2 of 7



REFERENCE WELLPATH IDENTIFICATION			
Operator	BONANZA CREEK ENERGY	Slot	SLOT#04 STATE PRONGHORN FEDERAL D14-X44-30HNB (2213'FSL & 610'FWL,SEC.30)
Area	COLORADO	Well	STATE PRONGHORN FEDERAL D14-X44-30HNB
Field	WELD COUNTY (NAD83/TRUE)	Wellbore	STATE PRONGHORN FEDERAL D14-X44-30HNB PWB
Facility	SEC.30-T05N-R61W		

WELLPATH DATA (121 stations) † = interpolated/extrapolated station										
MD [ft]	Inclination [°]	Azimuth [°]	TVD [ft]	Vert Sect [ft]	North [ft]	East [ft]	Latitude	Longitude	DLS [°/100ft]	Comments
0.00†	0.000	224.917	0.00	0.00	0.00	0.00	40°22'13.512"N	104°15'33.942"W	0.00	
17.00	0.000	224.917	17.00	0.00	0.00	0.00	40°22'13.512"N	104°15'33.942"W	0.00	Tie On
117.00†	0.000	224.917	117.00	0.00	0.00	0.00	40°22'13.512"N	104°15'33.942"W	0.00	
217.00†	0.000	224.917	217.00	0.00	0.00	0.00	40°22'13.512"N	104°15'33.942"W	0.00	
317.00†	0.000	224.917	317.00	0.00	0.00	0.00	40°22'13.512"N	104°15'33.942"W	0.00	
417.00†	0.000	224.917	417.00	0.00	0.00	0.00	40°22'13.512"N	104°15'33.942"W	0.00	
517.00†	0.000	224.917	517.00	0.00	0.00	0.00	40°22'13.512"N	104°15'33.942"W	0.00	
617.00†	0.000	224.917	617.00	0.00	0.00	0.00	40°22'13.512"N	104°15'33.942"W	0.00	
717.00†	0.000	224.917	717.00	0.00	0.00	0.00	40°22'13.512"N	104°15'33.942"W	0.00	
817.00†	0.000	224.917	817.00	0.00	0.00	0.00	40°22'13.512"N	104°15'33.942"W	0.00	
917.00†	0.000	224.917	917.00	0.00	0.00	0.00	40°22'13.512"N	104°15'33.942"W	0.00	
1017.00†	0.000	224.917	1017.00	0.00	0.00	0.00	40°22'13.512"N	104°15'33.942"W	0.00	
1117.00†	0.000	224.917	1117.00	0.00	0.00	0.00	40°22'13.512"N	104°15'33.942"W	0.00	
1217.00†	0.000	224.917	1217.00	0.00	0.00	0.00	40°22'13.512"N	104°15'33.942"W	0.00	
1317.00†	0.000	224.917	1317.00	0.00	0.00	0.00	40°22'13.512"N	104°15'33.942"W	0.00	
1417.00†	0.000	224.917	1417.00	0.00	0.00	0.00	40°22'13.512"N	104°15'33.942"W	0.00	
1517.00†	0.000	224.917	1517.00	0.00	0.00	0.00	40°22'13.512"N	104°15'33.942"W	0.00	
1600.00	0.000	224.917	1600.00	0.00	0.00	0.00	40°22'13.512"N	104°15'33.942"W	0.00	End of Tangent
1617.00†	0.340	224.917	1617.00	-0.03	-0.04	-0.04	40°22'13.512"N	104°15'33.942"W	2.00	
1717.00†	2.340	224.917	1716.97	-1.32	-1.69	-1.69	40°22'13.495"N	104°15'33.964"W	2.00	
1817.00†	4.340	224.917	1816.79	-4.52	-5.82	-5.80	40°22'13.455"N	104°15'34.017"W	2.00	
1917.00†	6.340	224.917	1916.35	-9.65	-12.41	-12.37	40°22'13.389"N	104°15'34.102"W	2.00	
2017.00†	8.340	224.917	2015.53	-16.68	-21.45	-21.39	40°22'13.300"N	104°15'34.218"W	2.00	
2117.00†	10.340	224.917	2114.20	-25.61	-32.95	-32.85	40°22'13.186"N	104°15'34.366"W	2.00	
2217.00†	12.340	224.917	2212.24	-36.44	-46.87	-46.73	40°22'13.049"N	104°15'34.546"W	2.00	
2317.00†	14.340	224.917	2309.54	-49.14	-63.21	-63.02	40°22'12.887"N	104°15'34.756"W	2.00	
2417.00†	16.340	224.917	2405.97	-63.70	-81.94	-81.70	40°22'12.702"N	104°15'34.997"W	2.00	
2517.00†	18.340	224.917	2501.42	-80.11	-103.04	-102.75	40°22'12.494"N	104°15'35.269"W	2.00	
2617.00†	20.340	224.917	2595.77	-98.34	-126.49	-126.13	40°22'12.262"N	104°15'35.571"W	2.00	
2706.69	22.134	224.917	2679.37	-116.23	-149.50	-149.07	40°22'12.035"N	104°15'35.868"W	2.00	End of Build



# Planned Wellpath Report

STATE PRONGHORN FEDERAL D14-X44-30HNB (REV-D.0) PWP

Page 3 of 7



REFERENCE WELLPATH IDENTIFICATION			
Operator	BONANZA CREEK ENERGY	Slot	SLOT#04 STATE PRONGHORN FEDERAL D14-X44-30HNB (2213'FSL & 610'FWL,SEC.30)
Area	COLORADO	Well	STATE PRONGHORN FEDERAL D14-X44-30HNB
Field	WELD COUNTY (NAD83/TRUE)	Wellbore	STATE PRONGHORN FEDERAL D14-X44-30HNB PWB
Facility	SEC.30-T05N-R61W		

WELLPATH DATA (121 stations) † = interpolated/extrapolated station										
MD [ft]	Inclination [°]	Azimuth [°]	TVD [ft]	Vert Sect [ft]	North [ft]	East [ft]	Latitude	Longitude	DLS [°/100ft]	Comments
2717.00†	22.134	224.917	2688.92	-118.37	-152.25	-151.81	40°22'12.008"N	104°15'35.903"W	0.00	
2817.00†	22.134	224.917	2781.55	-139.11	-178.93	-178.41	40°22'11.744"N	104°15'36.247"W	0.00	
2917.00†	22.134	224.917	2874.18	-159.85	-205.61	-205.02	40°22'11.480"N	104°15'36.591"W	0.00	
3017.00†	22.134	224.917	2966.81	-180.60	-232.29	-231.62	40°22'11.217"N	104°15'36.934"W	0.00	
3117.00†	22.134	224.917	3059.44	-201.34	-258.97	-258.22	40°22'10.953"N	104°15'37.278"W	0.00	
3217.00†	22.134	224.917	3152.07	-222.08	-285.65	-284.83	40°22'10.689"N	104°15'37.622"W	0.00	
3317.00†	22.134	224.917	3244.70	-242.83	-312.33	-311.43	40°22'10.426"N	104°15'37.965"W	0.00	
3417.00†	22.134	224.917	3337.33	-263.57	-339.01	-338.03	40°22'10.162"N	104°15'38.309"W	0.00	
3517.00†	22.134	224.917	3429.96	-284.31	-365.69	-364.64	40°22'09.898"N	104°15'38.653"W	0.00	
3617.00†	22.134	224.917	3522.59	-305.06	-392.37	-391.24	40°22'09.635"N	104°15'38.996"W	0.00	
3717.00†	22.134	224.917	3615.22	-325.80	-419.05	-417.84	40°22'09.371"N	104°15'39.340"W	0.00	
3817.00†	22.134	224.917	3707.86	-346.54	-445.73	-444.45	40°22'09.107"N	104°15'39.684"W	0.00	
3917.00†	22.134	224.917	3800.49	-367.28	-472.41	-471.05	40°22'08.844"N	104°15'40.028"W	0.00	
4017.00†	22.134	224.917	3893.12	-388.03	-499.09	-497.65	40°22'08.580"N	104°15'40.371"W	0.00	
4117.00†	22.134	224.917	3985.75	-408.77	-525.77	-524.26	40°22'08.316"N	104°15'40.715"W	0.00	
4217.00†	22.134	224.917	4078.38	-429.51	-552.45	-550.86	40°22'08.053"N	104°15'41.059"W	0.00	
4317.00†	22.134	224.917	4171.01	-450.26	-579.13	-577.46	40°22'07.789"N	104°15'41.402"W	0.00	
4417.00†	22.134	224.917	4263.64	-471.00	-605.81	-604.06	40°22'07.525"N	104°15'41.746"W	0.00	
4517.00†	22.134	224.917	4356.27	-491.74	-632.49	-630.67	40°22'07.262"N	104°15'42.090"W	0.00	
4617.00†	22.134	224.917	4448.90	-512.49	-659.17	-657.27	40°22'06.998"N	104°15'42.433"W	0.00	
4717.00†	22.134	224.917	4541.53	-533.23	-685.85	-683.87	40°22'06.735"N	104°15'42.777"W	0.00	
4817.00†	22.134	224.917	4634.16	-553.97	-712.53	-710.48	40°22'06.471"N	104°15'43.121"W	0.00	
4917.00†	22.134	224.917	4726.79	-574.72	-739.21	-737.08	40°22'06.207"N	104°15'43.464"W	0.00	
5017.00†	22.134	224.917	4819.42	-595.46	-765.89	-763.68	40°22'05.944"N	104°15'43.808"W	0.00	
5117.00†	22.134	224.917	4912.05	-616.20	-792.57	-790.29	40°22'05.680"N	104°15'44.152"W	0.00	
5217.00†	22.134	224.917	5004.68	-636.94	-819.26	-816.89	40°22'05.416"N	104°15'44.496"W	0.00	
5317.00†	22.134	224.917	5097.31	-657.69	-845.94	-843.49	40°22'05.153"N	104°15'44.839"W	0.00	
5417.00†	22.134	224.917	5189.94	-678.43	-872.62	-870.10	40°22'04.889"N	104°15'45.183"W	0.00	
5517.00†	22.134	224.917	5282.58	-699.17	-899.30	-896.70	40°22'04.625"N	104°15'45.527"W	0.00	
5535.01	22.134	224.917	5299.26	-702.91	-904.10	-901.49	40°22'04.578"N	104°15'45.588"W	0.00	End of Tangent



# Planned Wellpath Report

STATE PRONGHORN FEDERAL D14-X44-30HNB (REV-D.0) PWP

Page 4 of 7



REFERENCE WELLPATH IDENTIFICATION			
Operator	BONANZA CREEK ENERGY	Slot	SLOT#04 STATE PRONGHORN FEDERAL D14-X44-30HNB (2213'FSL & 610'FWL,SEC.30)
Area	COLORADO	Well	STATE PRONGHORN FEDERAL D14-X44-30HNB
Field	WELD COUNTY (NAD83/TRUE)	Wellbore	STATE PRONGHORN FEDERAL D14-X44-30HNB PWB
Facility	SEC.30-T05N-R61W		

WELLPATH DATA (121 stations) † = interpolated/extrapolated station										
MD [ft]	Inclination [°]	Azimuth [°]	TVD [ft]	Vert Sect [ft]	North [ft]	East [ft]	Latitude	Longitude	DLS [°/100ft]	Comments
5617.00†	17.329	205.007	5376.50	-714.28	-926.14	-917.59	40°22'04.360"N	104°15'45.796"W	10.00	
5717.00†	15.701	169.747	5472.61	-712.74	-953.02	-921.48	40°22'04.094"N	104°15'45.847"W	10.00	
5817.00†	19.693	139.065	5568.06	-694.31	-979.13	-908.00	40°22'03.836"N	104°15'45.673"W	10.00	
5917.00†	26.909	121.298	5659.95	-659.57	-1003.68	-877.55	40°22'03.594"N	104°15'45.279"W	10.00	
6017.00†	35.427	111.081	5745.50	-609.57	-1025.92	-831.05	40°22'03.374"N	104°15'44.678"W	10.00	
6117.00†	44.503	104.504	5822.10	-545.83	-1045.17	-769.92	40°22'03.184"N	104°15'43.889"W	10.00	
6217.00†	53.849	99.788	5887.42	-470.29	-1060.85	-696.02	40°22'03.029"N	104°15'42.934"W	10.00	
6317.00†	63.341	96.091	5939.48	-385.23	-1072.48	-611.59	40°22'02.914"N	104°15'41.843"W	10.00	
6417.00†	72.913	92.968	5976.70	-293.25	-1079.72	-519.19	40°22'02.842"N	104°15'40.649"W	10.00	
6517.00†	82.529	90.154	5997.95	-197.14	-1082.33	-421.64	40°22'02.817"N	104°15'39.389"W	10.00	
6594.57	90.000	88.063	6003.00†	-121.60	-1081.12	-344.31	40°22'02.829"N	104°15'38.390"W	10.00	End of 3D Arc
6617.00†	90.000	88.063	6003.00	-99.78	-1080.37	-321.89	40°22'02.836"N	104°15'38.100"W	0.00	
6717.00†	90.000	88.063	6003.00	-2.53	-1076.99	-221.94	40°22'02.870"N	104°15'36.809"W	0.00	
6817.00†	90.000	88.063	6003.00	94.73	-1073.61	-122.00	40°22'02.903"N	104°15'35.518"W	0.00	
6917.00†	90.000	88.063	6003.00	191.99	-1070.23	-22.06	40°22'02.936"N	104°15'34.227"W	0.00	
7017.00†	90.000	88.063	6003.00	289.25	-1066.85	77.89	40°22'02.970"N	104°15'32.936"W	0.00	
7117.00†	90.000	88.063	6003.00	386.50	-1063.47	177.83	40°22'03.003"N	104°15'31.644"W	0.00	
7217.00†	90.000	88.063	6003.00	483.76	-1060.09	277.77	40°22'03.037"N	104°15'30.353"W	0.00	
7317.00†	90.000	88.063	6003.00	581.02	-1056.71	377.71	40°22'03.070"N	104°15'29.062"W	0.00	
7417.00†	90.000	88.063	6003.00	678.28	-1053.33	477.66	40°22'03.103"N	104°15'27.771"W	0.00	
7517.00†	90.000	88.063	6003.00	775.53	-1049.95	577.60	40°22'03.137"N	104°15'26.480"W	0.00	
7617.00†	90.000	88.063	6003.00	872.79	-1046.57	677.54	40°22'03.170"N	104°15'25.189"W	0.00	
7717.00†	90.000	88.063	6003.00	970.05	-1043.19	777.49	40°22'03.203"N	104°15'23.897"W	0.00	
7817.00†	90.000	88.063	6003.00	1067.31	-1039.81	877.43	40°22'03.237"N	104°15'22.606"W	0.00	
7917.00†	90.000	88.063	6003.00	1164.56	-1036.43	977.37	40°22'03.270"N	104°15'21.315"W	0.00	
8017.00†	90.000	88.063	6003.00	1261.82	-1033.05	1077.31	40°22'03.303"N	104°15'20.024"W	0.00	
8117.00†	90.000	88.063	6003.00	1359.08	-1029.67	1177.26	40°22'03.337"N	104°15'18.733"W	0.00	
8217.00†	90.000	88.063	6003.00	1456.34	-1026.30	1277.20	40°22'03.370"N	104°15'17.442"W	0.00	
8317.00†	90.000	88.063	6003.00	1553.59	-1022.92	1377.14	40°22'03.403"N	104°15'16.150"W	0.00	
8417.00†	90.000	88.063	6003.00	1650.85	-1019.54	1477.09	40°22'03.437"N	104°15'14.859"W	0.00	





# Planned Wellpath Report

STATE PRONGHORN FEDERAL D14-X44-30HNB (REV-D.0) PWP

Page 5 of 7



REFERENCE WELLPATH IDENTIFICATION			
Operator	BONANZA CREEK ENERGY	Slot	SLOT#04 STATE PRONGHORN FEDERAL D14-X44-30HNB (2213'FSL & 610'FWL,SEC.30)
Area	COLORADO	Well	STATE PRONGHORN FEDERAL D14-X44-30HNB
Field	WELD COUNTY (NAD83/TRUE)	Wellbore	STATE PRONGHORN FEDERAL D14-X44-30HNB PWB
Facility	SEC.30-T05N-R61W		

WELLPATH DATA (121 stations) † = interpolated/extrapolated station										
MD [ft]	Inclination [°]	Azimuth [°]	TVD [ft]	Vert Sect [ft]	North [ft]	East [ft]	Latitude	Longitude	DLS [°/100ft]	Comments
8517.00†	90.000	88.063	6003.00	1748.11	-1016.16	1577.03	40°22'03.470"N	104°15'13.568"W	0.00	
8617.00†	90.000	88.063	6003.00	1845.37	-1012.78	1676.97	40°22'03.503"N	104°15'12.277"W	0.00	
8717.00†	90.000	88.063	6003.00	1942.62	-1009.40	1776.91	40°22'03.537"N	104°15'10.986"W	0.00	
8817.00†	90.000	88.063	6003.00	2039.88	-1006.02	1876.86	40°22'03.570"N	104°15'09.694"W	0.00	
8917.00†	90.000	88.063	6003.00	2137.14	-1002.64	1976.80	40°22'03.603"N	104°15'08.403"W	0.00	
9017.00†	90.000	88.063	6003.00	2234.40	-999.26	2076.74	40°22'03.637"N	104°15'07.112"W	0.00	
9117.00†	90.000	88.063	6003.00	2331.65	-995.88	2176.69	40°22'03.670"N	104°15'05.821"W	0.00	
9217.00†	90.000	88.063	6003.00	2428.91	-992.50	2276.63	40°22'03.703"N	104°15'04.530"W	0.00	
9317.00†	90.000	88.063	6003.00	2526.17	-989.12	2376.57	40°22'03.737"N	104°15'03.238"W	0.00	
9417.00†	90.000	88.063	6003.00	2623.43	-985.74	2476.51	40°22'03.770"N	104°15'01.947"W	0.00	
9517.00†	90.000	88.063	6003.00	2720.69	-982.36	2576.46	40°22'03.803"N	104°15'00.656"W	0.00	
9617.00†	90.000	88.063	6003.00	2817.94	-978.98	2676.40	40°22'03.837"N	104°14'59.365"W	0.00	
9717.00†	90.000	88.063	6003.00	2915.20	-975.60	2776.34	40°22'03.870"N	104°14'58.074"W	0.00	
9817.00†	90.000	88.063	6003.00	3012.46	-972.22	2876.29	40°22'03.903"N	104°14'56.783"W	0.00	
9917.00†	90.000	88.063	6003.00	3109.72	-968.84	2976.23	40°22'03.936"N	104°14'55.491"W	0.00	
10017.00†	90.000	88.063	6003.00	3206.97	-965.47	3076.17	40°22'03.970"N	104°14'54.200"W	0.00	
10117.00†	90.000	88.063	6003.00	3304.23	-962.09	3176.11	40°22'04.003"N	104°14'52.909"W	0.00	
10217.00†	90.000	88.063	6003.00	3401.49	-958.71	3276.06	40°22'04.036"N	104°14'51.618"W	0.00	
10317.00†	90.000	88.063	6003.00	3498.75	-955.33	3376.00	40°22'04.069"N	104°14'50.327"W	0.00	
10417.00†	90.000	88.063	6003.00	3596.00	-951.95	3475.94	40°22'04.103"N	104°14'49.035"W	0.00	
10517.00†	90.000	88.063	6003.00	3693.26	-948.57	3575.89	40°22'04.136"N	104°14'47.744"W	0.00	
10617.00†	90.000	88.063	6003.00	3790.52	-945.19	3675.83	40°22'04.169"N	104°14'46.453"W	0.00	
10717.00†	90.000	88.063	6003.00	3887.78	-941.81	3775.77	40°22'04.202"N	104°14'45.162"W	0.00	
10817.00†	90.000	88.063	6003.00	3985.03	-938.43	3875.71	40°22'04.236"N	104°14'43.871"W	0.00	
10917.00†	90.000	88.063	6003.00	4082.29	-935.05	3975.66	40°22'04.269"N	104°14'42.579"W	0.00	
11017.00†	90.000	88.063	6003.00	4179.55	-931.67	4075.60	40°22'04.302"N	104°14'41.288"W	0.00	
11117.00†	90.000	88.063	6003.00	4276.81	-928.29	4175.54	40°22'04.335"N	104°14'39.997"W	0.00	
11217.00†	90.000	88.063	6003.00	4374.06	-924.91	4275.49	40°22'04.369"N	104°14'38.706"W	0.00	
11317.00†	90.000	88.063	6003.00	4471.32	-921.53	4375.43	40°22'04.402"N	104°14'37.415"W	0.00	
11417.00†	90.000	88.063	6003.00	4568.58	-918.15	4475.37	40°22'04.435"N	104°14'36.123"W	0.00	



# Planned Wellpath Report

STATE PRONGHORN FEDERAL D14-X44-30HNB (REV-D.0) PWP

Page 6 of 7



REFERENCE WELLPATH IDENTIFICATION			
Operator	BONANZA CREEK ENERGY	Slot	SLOT#04 STATE PRONGHORN FEDERAL D14-X44-30HNB (2213'FSL & 610'FWL,SEC.30)
Area	COLORADO	Well	STATE PRONGHORN FEDERAL D14-X44-30HNB
Field	WELD COUNTY (NAD83/TRUE)	Wellbore	STATE PRONGHORN FEDERAL D14-X44-30HNB PWB
Facility	SEC.30-T05N-R61W		

WELLPATH DATA (121 stations)										
MD [ft]	Inclination [°]	Azimuth [°]	TVD [ft]	Vert Sect [ft]	North [ft]	East [ft]	Latitude	Longitude	DLS [°/100ft]	Comments
11444.78	90.000	88.063	6003.00 <sup>2</sup>	4595.60	-917.21	4503.14	40°22'04.444"N	104°14'35.765"W	0.00	End of Tangent

HOLE & CASING SECTIONS									
- Ref Wellbore: STATE PRONGHORN FEDERAL D14-X44-30HNB PWB					Ref Wellpath: STATE PRONGHORN FEDERAL D14-X44-30HNB (REV-D.0) PWP				
String/Diameter	Start MD [ft]	End MD [ft]	Interval [ft]	Start TVD [ft]	End TVD [ft]	Start N/S [ft]	Start E/W [ft]	End N/S [ft]	End E/W [ft]
9.625in Casing	17.00	1600.00	1583.00	17.00	1600.00	0.00	0.00	0.00	0.00
8.5in Open Hole	1600.00	11444.78	9844.78	1600.00	6003.00	0.00	0.00	-917.21	4503.14

TARGETS									
Name	MD [ft]	TVD [ft]	North [ft]	East [ft]	Grid East [US ft]	Grid North [US ft]	Latitude	Longitude	Shape
2) STATE PRONGHORN FEDERAL D14-X44-30HNB BHL REV-4 (1239'FSL & 260'FEL,SEC.30)	11444.78	6003.00	-917.21	4503.14	3350166.88	1379348.33	40°22'04.444"N	104°14'35.765"W	point
1) STATE PRONGHORN FEDERAL D14-X44-30HNB LP REV-4 (1136'FSL & 260'FWL,SEC.30)	6594.57	6003.00	-1081.12	-344.31	3345322.41	1379116.63	40°22'02.829"N	104°15'38.390"W	point
SEC.30-T05N-R61W		11999.00	1861.14	10525.20	3356149.23	1382210.53	40°22'31.881"N	104°13'17.949"W	polygon
SEC.31-T05N-R61W		11999.00	-3379.06	9262.91	3354960.43	1376953.41	40°21'40.104"N	104°13'34.284"W	polygon

SURVEY PROGRAM -				
Ref Wellbore: STATE PRONGHORN FEDERAL D14-X44-30HNB PWB      Ref Wellpath: STATE PRONGHORN FEDERAL D14-X44-30HNB (REV-D.0) PWP				
Start MD [ft]	End MD [ft]	Positional Uncertainty Model	Log Name/Comment	Wellbore

SURVEY PROGRAM - Ref Wellbore: STATE PRONGHORN FEDERAL D14-X44-30HNB PWB      Ref Wellpath: STATE PRONGHORN FEDERAL D14-X44-30HNB (REV-D.0) PWP				
Start MD [ft]	End MD [ft]	Positional Uncertainty Model	Log Name/Comment	Wellbore
17.00	1600.00	BHI NaviTrak (Rotating+Axial Corr)		STATE PRONGHORN FEDERAL D14-X44-30HNB PWB
1600.00	11444.78	BHI AutoTrak Curve (Short)		STATE PRONGHORN FEDERAL D14-X44-30HNB PWB





**Planned Wellpath Report**  
**STATE PRONGHORN FEDERAL D14-X44-30HNB (REV-D.0) PWP**  
Page 7 of 7



REFERENCE WELLPATH IDENTIFICATION			
Operator	BONANZA CREEK ENERGY	Slot	SLOT#04 STATE PRONGHORN FEDERAL D14-X44-30HNB (2213'FSL & 610'FWL,SEC.30)
Area	COLORADO	Well	STATE PRONGHORN FEDERAL D14-X44-30HNB
Field	WELD COUNTY (NAD83/TRUE)	Wellbore	STATE PRONGHORN FEDERAL D14-X44-30HNB PWB
Facility	SEC.30-T05N-R61W		

DESIGN COMMENTS				
MD [ft]	Inclination [°]	Azimuth [°]	TVD [ft]	Comment
17.00	0.000	224.917	17.00	Tie On
1600.00	0.000	224.917	1600.00	End of Tangent
2706.69	22.134	224.917	2679.37	End of Build
5535.01	22.134	224.917	5299.26	End of Tangent
6594.57	90.000	88.063	6003.00	End of 3D Arc
11444.78	90.000	88.063	6003.00	End of Tangent