



410 17th Street, Suite 1400  
Denver, CO 80202  
(720) 440-6100 phone  
(720) 305-0804 fax

[Bonanzacrk.com](http://Bonanzacrk.com)

September 11, 2020

State of Colorado  
Oil and Gas Conservation Commission  
1120 Lincoln Street, Suite 801  
Denver, CO 80203

**RE: Proposed Wellbore Spacing Unit**  
State Pronghorn Federal 13-43-30HNB  
Niobrara New Drill  
Lot 3, Section 30, Township 5N, Range 61W, 6<sup>th</sup> PM  
Weld County, Colorado

Dear Director Murphy,

Bonanza Creek Energy Operating Company, LLC. ("Bonanza Creek") is planning to drill the above captioned well in accordance with the provisions of Colorado Oil and Gas Conservation Commission (COGCC) Rule 318A.e.

Bonanza Creek's proposed wellbore spacing unit consists of:

Township 5N, Range 61W (Weld County):  
Section 30: N2S2  
Section 29: NWSW  
Township 5N, Range 62W (Weld County):  
Section 25: NESE

Total acres: 240ac

The 30 day notification time period has passed and we have not yet received any objections to such well locations or proposed spacing unit, therefore Bonanza Creek hereby requests the Director to approve the above mentioned well. Bonanza Creek respectfully requests the COGCC review the enclosed map illustrating the proposed wellbore spacing unit.

Regards,  
Bonanza Creek Energy Operating Company, LLC.

Kate Miller  
Regulatory Specialist

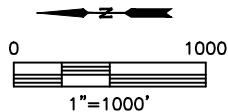
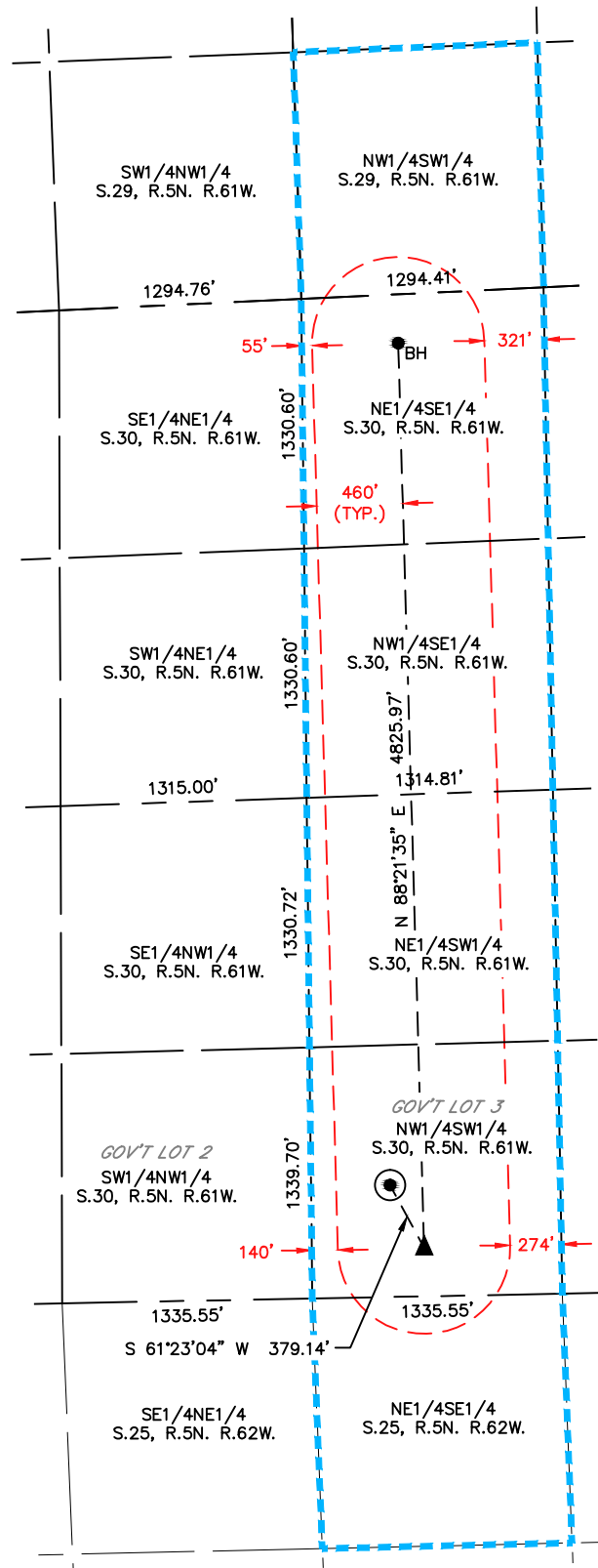


Lat40°, Inc. 6250 W. 10th Street, Unit 2, Greeley, CO 970-515-5294

# SPACING UNIT BUFFER MAP

STATE PRONGHORN FEDERAL 13-43-30HNB

SECTION: 30  
TOWNSHIP: 5N  
RANGE: 61W  
6TH. P.M.  
WELD COUNTY, CO



## LEGEND

- = SURFACE HOLE LOCATION (SHL)
- ▲ = ENTRY POINT LOCATION (EP)
- ◆ = TOP OF PRODUCTION ZONE (TPZ)
- <sub>BH</sub> = BOTTOM HOLE LOCATION (BHL)
- ⊙ = EXISTING WELL
- ⊙ = ABANDONED WELL

- = 460' SPACING UNIT BUFFER
- = QUARTER/QUARTER BUFFER

SHL FOOTAGE				SHL LAT °	SHL LONG °	SHL PDOP	SHL ELEV (FT.)	SHL 1/4/1/4	SHL S-T-R
2240	FSL	596	FWL	40.37049	-104.25948	1.4	4526	NWSW	30-5-61

BHL FOOTAGE				BHL LAT °	BHL LONG °	BHL S-T-R	EP FOOTAGE				EP LAT °	EP LONG °	EP S-T-R
2077	FSL	260	FEL	40.37020	-104.24337	30-5-61	2067	FSL	260	FWL	40.37001	-104.26068	30-5-61

DATE: 12/19/2019  
PROJECT#: 2018185