

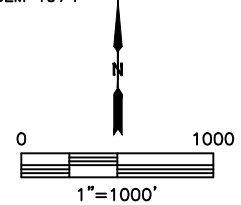
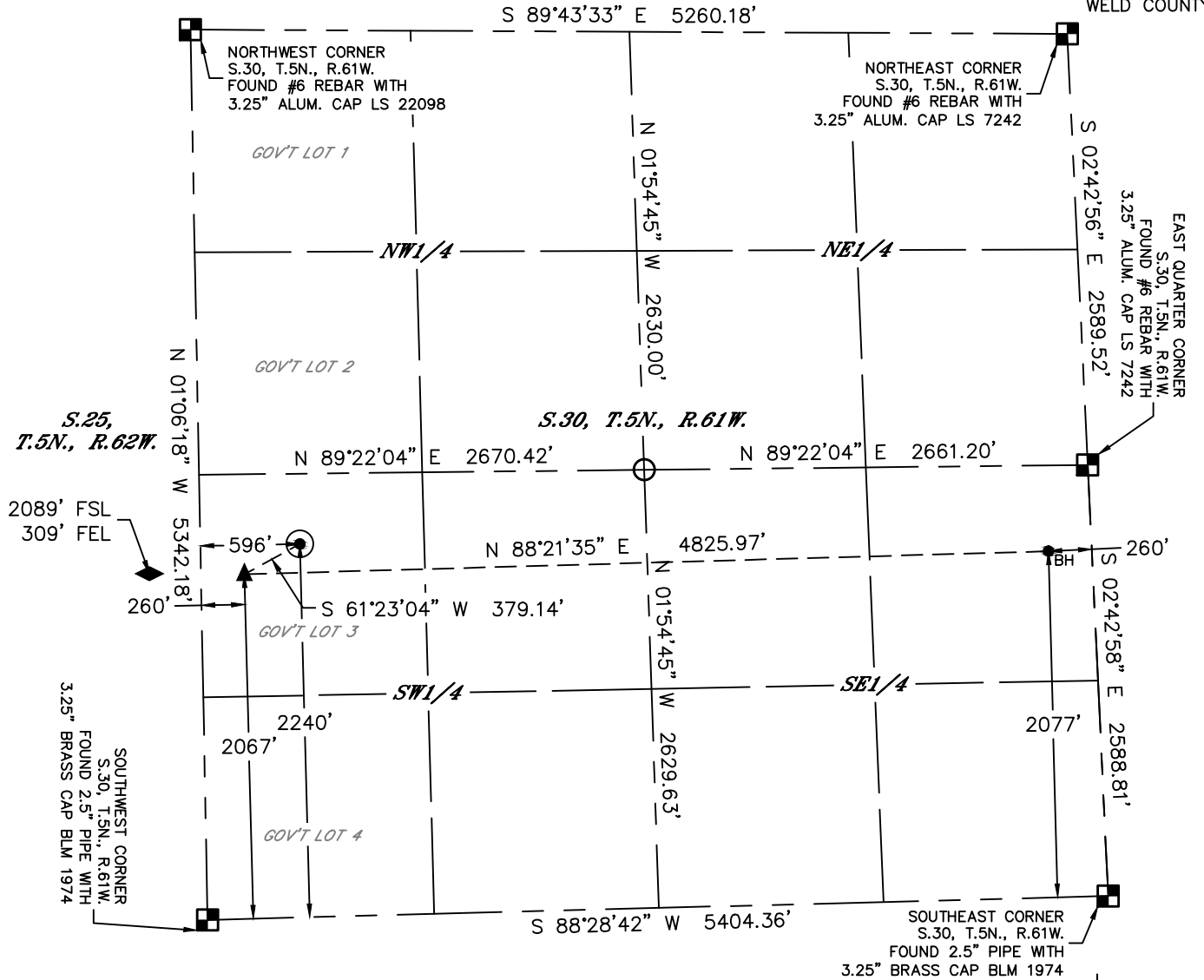


Lat40°, Inc. 6250 W. 10th Street, Unit 2, Greeley, CO 970-515-5294

WELL LOCATION CERTIFICATE

STATE PRONGHORN FEDERAL 13-43-30HNB

SECTION: 30
TOWNSHIP: 5N
RANGE: 61W
6TH. P.M.
WELD COUNTY, CO



CLIENT: BONANZA CREEK				LANDMAN: JOSEPH SCHULTZ					
INSTRUMENT OPERATOR: CASEY KOHOUT				SURVEY DATE: 2/7/2019		SURFACE USE: RANGELAND			
SHL FOOTAGE		SHL LAT°	SHL LONG°	SHL PDOP	SHL ELEV (FT.)	SHL 1/4/1/4	SHL S-T-R		
2240	FSL	596	FWL	40.37049	-104.25948	1.4	4526	Lot 3	30-5-61

BHL FOOTAGE		BHL LAT°	BHL LONG°	BHL S-T-R	EP LAT°	EP LONG°	EP S-T-R		
2077	FSL	260	FEL	40.37020	-104.24337	30-5-61	40.37001	-104.26068	30-5-61

LEGEND

- = ALIQUOT MONUMENT AS DESCRIBED
- = CALCULATED POSITION
- = SURFACE HOLE LOCATION (SHL)
- ▲ = ENTRY POINT LOCATION (EP)
- ◆ = KICK OFF POINT (KOP)
- _{BH} = BOTTOM HOLE LOCATION (BHL)

NOTE:

- 1) Bearings shown are Grid Bearings of the Colorado State Plane Coordinate System, North Zone, North American Datum 1983. The lineal dimensions as contained herein are based upon the "U.S. Survey Foot."
- 2) Distances to section lines measured at 90 degrees from said section lines.
- 3) Ground elevations are based on an observed GPS elevation (NAVD 1988 DATUM).
- 4) Latitude and Longitude shown are (NAD 83 DATUM).
- 5) IMPROVEMENTS: See LOCATION DRAWING for all visible improvements within 500' of oil and gas location.



Kyle E. Rutz-Og, behalf of Lat40°, Inc.
Colorado Licensed Professional Land Surveyor No. 38307
DATE: 2/27/2020
PROJECT#: 2018185