



FORM F-106



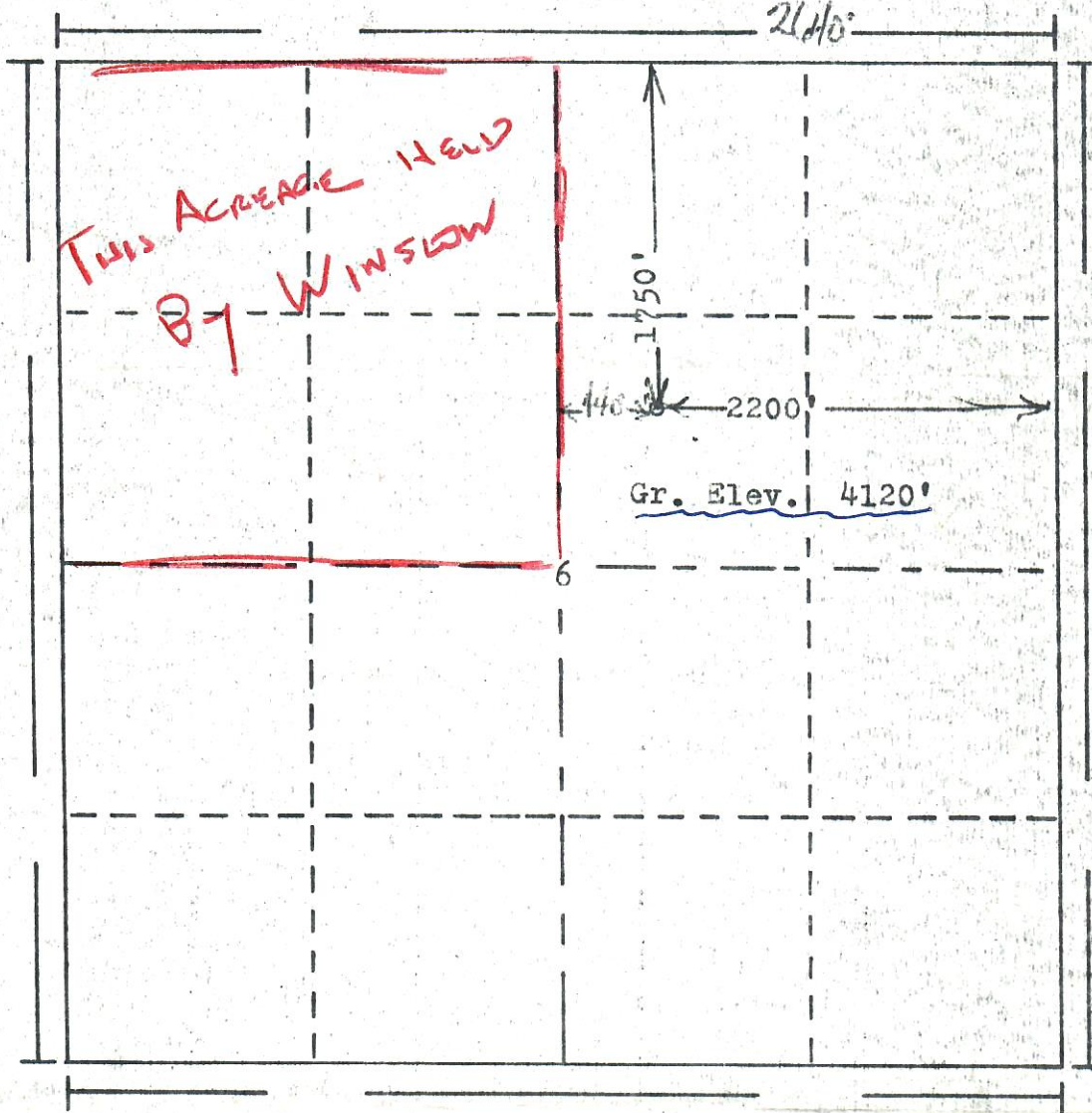
00269896

RECEIVED

NOV 8 1977

COLD OIL & GAS CONS. COMM.

R. 53W



Scale... 1" = 1000'

Powers Elevation Company, Inc. of Denver, Colorado
has in accordance with a request from r. Gear
for Donald C. Winslow etal
determined the location of No.1 Sanders
to be 1750'FN & 2200'FE Section 6 Township 9N
Range 53W of the 6th Principal Meridian
Logan County, Colorado

I hereby certify that this plat is an
accurate representation of a correct
survey showing the location of

Date: 10-26-77

B. J. H. H. H.
Licensed Land Surveyor No. 2853
State of Colorado

771171