



Mr. Phillip Porter
PDC Energy Inc.
4000 Burlington Avenue
Evans, Colorado 80620

August 13, 2020

RE: Vegetation Assessment Report (Final Reclamation Completion Notice)
COGCC Location Information: CORNISH-66N63W /10SENW (Location I.D. 306300)
Operator Location Information: Cornish 22-10 Well (API # 05-123-24384)
PDC Energy Inc. (Operator: 69175)

Dear Mr. Porter:

Apex Companies, LLC (Apex) is presenting this letter to PDC Energy Inc. (PDC) documenting the results of a vegetation assessment that demonstrates successful completion of final reclamation efforts, per Colorado Oil & Gas Conservation Commission (COGCC) Rule 1004, on the above-referenced location. This conclusion is based on site visits, project correspondence, site documentation, and the completed vegetation assessment. Attached is a topographic location map and a vegetation survey site map with additional location information.

On August 8, 2020, modified step-point vegetation surveys were conducted on the reclaimed portion of the well pad, and on adjacent reference areas. Foliar and basal cover, along with non-vegetated and noxious weed occurrences, were documented; 100 survey points were recorded within the reclaimed disturbance and 100 survey points were recorded within the reference area. Vegetation survey points were identified using a bullseye target tool. The survey methodology employed by Apex is based on the *step-point method* described in an interagency technical reference published by the Bureau of Land Management (BLM, 1996).

Noxious weeds listed by the Colorado Department of Agriculture were excluded from the percent of reference vegetative coverage calculations, per COGCC Rule 1004.d. To ensure reclamation vegetative composition meets the standards of PDC and the COGCC, undesirable cover is also quantified in the attached Summary of Field Data. Undesirable cover includes species identified by the United States Department of Agriculture (USDA) Natural Resource Conservation Service (NRCS) as introduced and not native to the lower 48 states, and not considered beneficial for reclamation purposes.

Survey results indicate the reclaimed area has a foliar vegetative cover that is 122.5% of the reference area. Vegetation survey results are provided in the attached Summary of Field Data and Field Data Tables. Based on the results of the survey, final reclamation, as defined by COGCC rules and regulations, has been achieved. Photographs exhibiting current site conditions are also attached along with the site map illustrating the vegetation survey photo points and transect locations.

Apex appreciates the opportunity to provide environmental consulting services on this project. Should you have any questions or require additional information, please do not hesitate to contact me.

Sincerely,

Apex Companies, LLC



Adam Roll
Environmental Scientist
970-589-6111
adam.roll@apexcos.com

Attachments:

1. Vegetation Survey - Summary of Field Data
2. Topographic Location Map
3. Vegetation Survey Site Map
4. Vegetation Assessment Photo Log
5. Vegetation Survey (Field Data Tables)

Reference:

United States (U.S.) Department of Agriculture (USDA), Forest Service (USFS), Natural Resource Conservation Service (NRCS) and U.S. Department of the Interior (USDOI) Bureau of Land Management (BLM). "Sampling Vegetation Attributes, Interagency Technical Reference, 1996 (Revised in 1997, and 1999)". USDOI BLM Technical References #1734-4.

Date Accessed: August 2, 2017

Vegetation Survey - Summary of Field Data

Client	PDC ENERGY INC
Operator Location Information	CORNISH 22-10 Well (API # 05-123-24384)
Assessment Date	8/6/2020
Inspector Name	Adam Roll

Based on the survey methodology, the foliar cover (%) in each survey area is calculated by summing the total number of foliar occurrences, excluding noxious weeds, and dividing by the total occurrences in the transects. For this location:

Reclaim Area (Foliar Cover)	Reference Area (Foliar Cover)
$(69 + 11 + 5) / 194 =$ 43.8%	$(46 + 16 + 7) / 193 =$ 35.8%

For the purposes of this assessment, the undesirable foliar cover (%) is calculated by summing the total number of undesirable* foliar occurrences and dividing by the total occurrences in the transects, excluding noxious weeds. For this location:

Reclaim Area (Undesirable Foliar Cover)	Reference Area (Undesirable Foliar Cover)
$1 / (69 + 11 + 5) =$ 1.2%	$9 / (46 + 16 + 7) =$ 13.0%

The percent of reference used to evaluate the reclamation area for compliance with COGCC Rule 1003.e(2) is calculated by dividing the foliar cover (%) in the reclaim area by the foliar cover (%) in the reference area. For this location:

Percent of Reference (Reclaim % / Reference %)
$43.8\% / 35.8\% =$ 122.5%

Reclaim Area Vegetation

Desirable Foliar Cover	43.3%
Desirable Basal Cover	28.9%
Non Vegetated	21.1%
Noxious Weeds Cover	6.2%
Undesirable Cover	0.5%
Quality Assurance Total (must equal 100)	100.0%
Grass (Foliar)	69
Forb (Foliar)	11
Shrubs (Foliar)	5
Noxious Weed (Foliar)	9
Grass (Basal)	44
Forb (Basal)	9
Shrubs (Basal)	3
Noxious Weed (Basal)	3
Bare Ground	5
Litter	35
Rock	1
Total Occurrences	194

Reference Area Vegetation

Desirable Foliar Cover	31.1%
Desirable Basal Cover	22.3%
Non Vegetated	20.2%
Noxious Weeds Cover	18.1%
Undesirable Cover	8.3%
Quality Assurance Total (must equal 100)	100.0%
Grass (Foliar)	46
Forb (Foliar)	16
Shrubs (Foliar)	7
Noxious Weed (Foliar)	24
Grass (Basal)	38
Forb (Basal)	10
Shrubs (Basal)	2
Noxious Weed (Basal)	11
Bare Ground	4
Litter	35
Rock	0
Total Occurrences	193

* Identified as introduced and non-native to the lower 48 states by the USDA NRCS, and not considered beneficial for reclamation purposes.

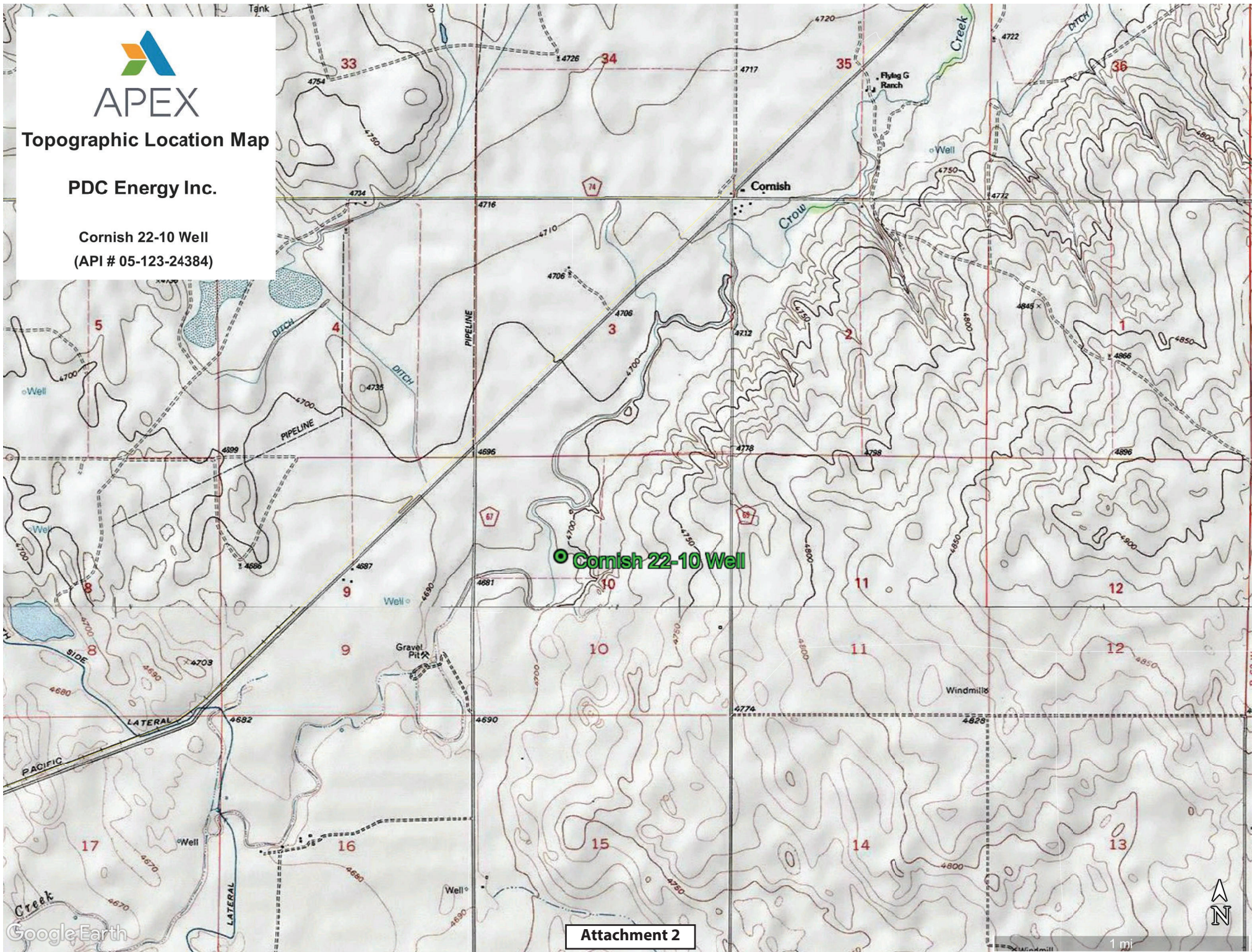


APEX

Topographic Location Map

PDC Energy Inc.

Cornish 22-10 Well
(API # 05-123-24384)



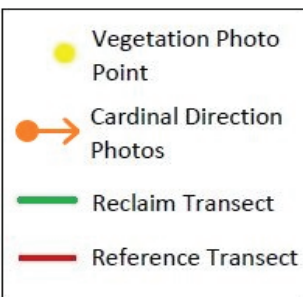
Attachment 2



Vegetation Survey Site Map

PDC Energy Inc.

**Cornish 22-10 Well
(API # 05-123-24384)**



Legal Description: SENW, Sec. 10, T6N-R63W

Lat/Long: 40.50286 / -104.42575

County: Weld

Land Use: Non-Cropland

Reference Area Foliar Cover: 35.8%

Reclaim Area Foliar Cover: 43.8%

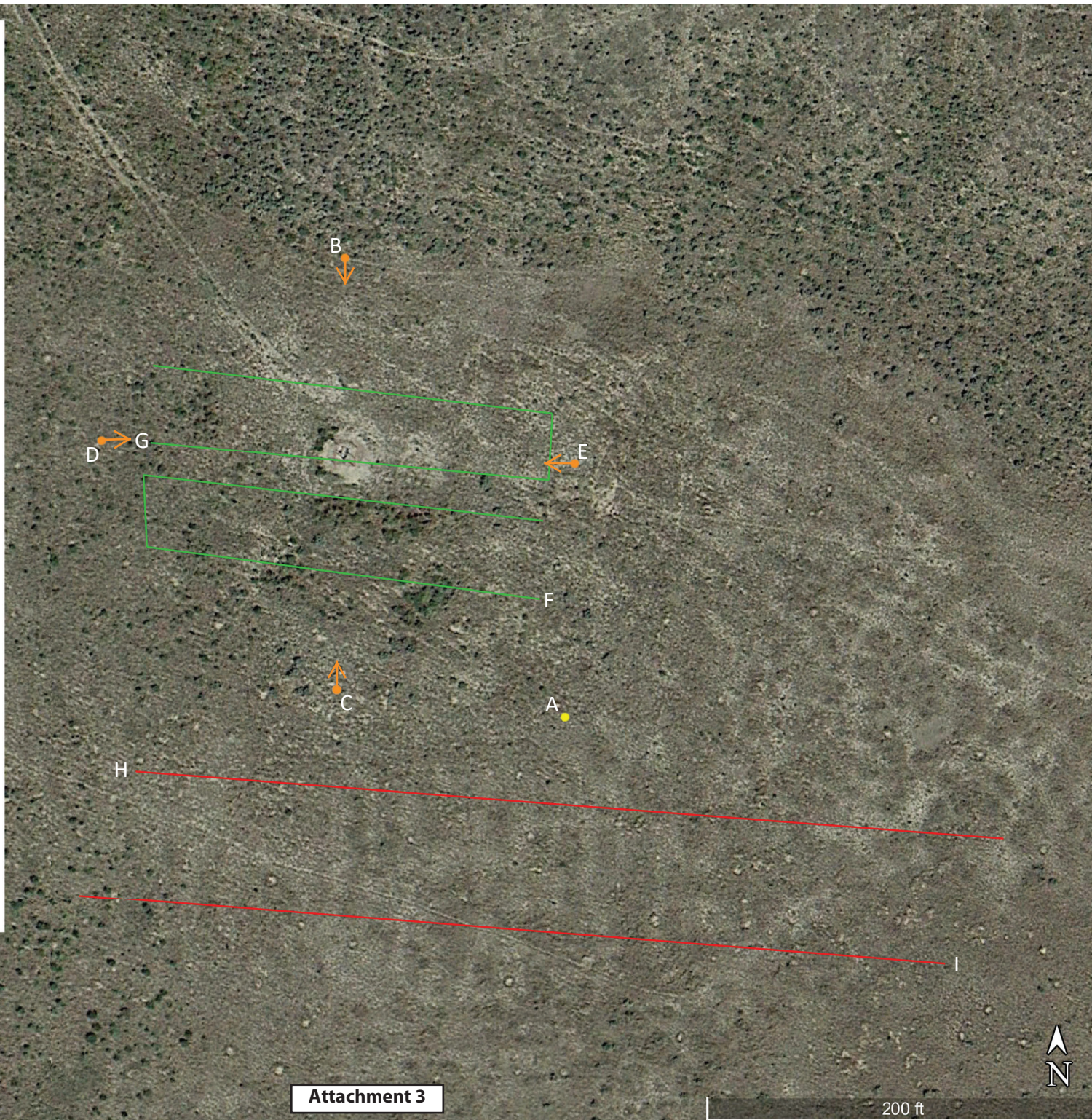
Cover Ratio (Reclaim/Reference): 122.5%

Inspector: A. Roll

Assessment Date: 08/06/2020

Aerial Imagery Date: 09/07/2013

**Please reference coordinate disclaimer on the photo log pages.*



Vegetation Assessment Photo Log

Date Completed - 08/06/2020

Client - PDC Energy Inc.

Operator Location Information - CORNISH 22-10 WELL (API # 05-123-24384)



Photo Point A: Edge of Disturbance - Facing West

*Geographic coordinates provided in the borders of all attached photos are based on points identified by the mobile phone or tablet which collected the photo. Coordinate accuracy in this format is typically no greater than 5 meters, while the points illustrated in the site diagram associated with this submittal were collected with a high accuracy GPS unit with sub-meter accuracy. Discrepancies between the site diagram and photo coordinates will exist.

Vegetation Assessment Photo Log

Date Completed - 08/06/2020

Client - PDC Energy Inc.

Operator Location Information - **CORNISH 22-10 WELL (API # 05-123-24384)**



Photo Point B: North of Disturbance - Facing South



Photo Point C: South of Disturbance - Facing North



Photo Point D: West of Disturbance - Facing East



Photo Point E: East of Disturbance - Facing West

Vegetation Assessment Photo Log

Date Completed - 08/06/2020

Client - PDC Energy Inc.

Operator Location Information - CORNISH 22-10 WELL (API # 05-123-24384)



Photo Point A: Reclaim Area Vegetation - Facing Northwest

Vegetation Assessment Photo Log

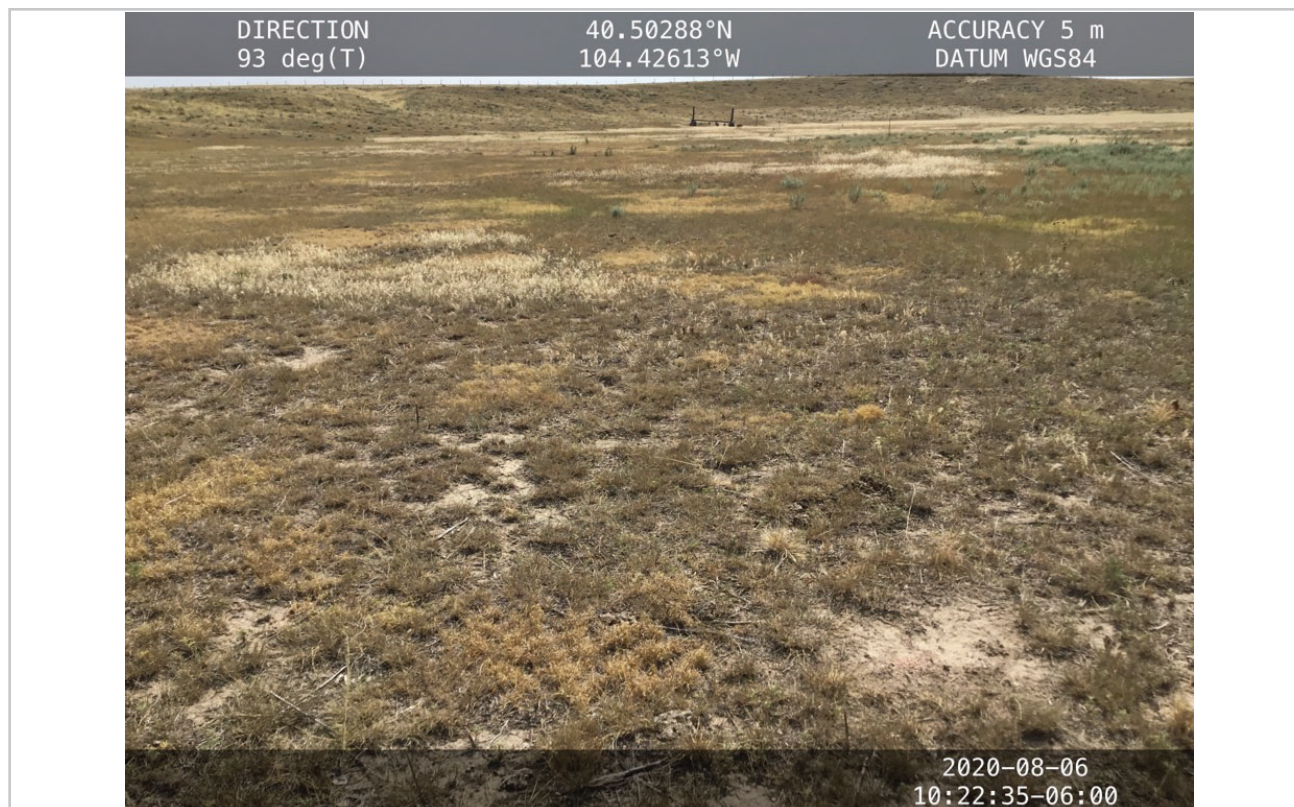
Date Completed - 08/06/2020

Client - PDC Energy Inc.

Operator Location Information - CORNISH 22-10 WELL (API # 05-123-24384)



Transect Photo F: Reclaim Transect 1 - Facing West



Transect Photo G: Reclaim Transect 2 - Facing East

Vegetation Assessment Photo Log

Client - PDC Energy Inc.

Date Completed - 08/06/2020

Operator Location Information - CORNISH 22-10 WELL (API # 05-123-24384)



Photo Point A: Reference Area Vegetation - Facing South

Vegetation Assessment Photo Log

Client - PDC Energy Inc.

Date Completed - 08/06/2020

Operator Location Information - **CORNISH 22-10 WELL (API # 05-123-24384)**



Transect Photo H: Reference Transect 1 - Facing East



Transect Photo I: Reference Transect 2 - Facing West

Vegetation Survey (Field Data Table)

Client: PDC ENERGY INC
 Operator Location Information: CORNISH 22-10 Well (API # 05-123-24384)
 Transect ID: Reclaim Transect 1
 Transect Length: 445 ft.
 Assessment Date: 8/6/2020
 Inspector: Adam Roll

Point	Foliar	Species	Basal	Species
1	Grass	<i>Elymus lanceolatus</i>	Grass	<i>Elymus lanceolatus</i>
2	Grass	<i>Eragrostis trichodes</i>	Grass	<i>Bouteloua gracilis</i>
3	Noxious Weed C	<i>Bromus tectorum</i>	Non Vegetative	Litter
4	Noxious Weed C	<i>Bromus tectorum</i>	Grass	<i>Hesperostipa comata</i>
5	Grass	<i>Bouteloua gracilis</i>	Non Vegetative	Litter
6			Non Vegetative	Bare Ground
7	Grass	<i>Bouteloua gracilis</i>	Grass	<i>Bouteloua gracilis</i>
8	Grass	<i>Bouteloua gracilis</i>	Grass	<i>Bouteloua gracilis</i>
9	Grass	<i>Elymus elymoides</i>	Grass	<i>Elymus elymoides</i>
10	Grass	<i>Elymus lanceolatus</i>	Grass	<i>Elymus lanceolatus</i>
11	Noxious Weed C	<i>Bromus tectorum</i>	Forb	<i>Sphaeralcea coccinea</i>
12	Grass	<i>Elymus lanceolatus</i>	Non Vegetative	Litter
13	Shrub	<i>Artemisia cana</i>	Shrub	<i>Artemisia cana</i>
14	Forb	<i>Heterotheca villosa</i>	Forb	<i>Heterotheca villosa</i>
15	Grass	<i>Aristida Spp</i>	Non Vegetative	Litter
16	Grass	<i>Elymus lanceolatus</i>	Grass	<i>Elymus lanceolatus</i>
17	Forb	<i>Sphaeralcea coccinea</i>	Non Vegetative	Litter
18	Shrub	<i>Artemisia cana</i>	Grass	<i>Elymus elymoides</i>
19	Shrub	<i>Artemisia cana</i>	Grass	<i>Bouteloua gracilis</i>
20	Forb	<i>Heterotheca villosa</i>	Forb	<i>Heterotheca villosa</i>
21	Grass	<i>Sporobolus cryptandrus</i>	Non Vegetative	Litter
22	Grass	<i>Sporobolus cryptandrus</i>	Grass	<i>Sporobolus cryptandrus</i>
23	Forb	<i>Sphaeralcea coccinea</i>	Forb	<i>Sphaeralcea coccinea</i>
24	Grass	<i>Aristida Spp</i>	Non Vegetative	Litter
25	Grass	<i>Sporobolus cryptandrus</i>	Non Vegetative	Litter
26	Grass	<i>Sporobolus cryptandrus</i>	Grass	<i>Sporobolus cryptandrus</i>
27	Grass	<i>Elymus elymoides</i>	Grass	<i>Elymus elymoides</i>
28			Non Vegetative	Litter
29	Noxious Weed C	<i>Bromus tectorum</i>	Grass	<i>Elymus elymoides</i>
30	Grass	<i>Elymus lanceolatus</i>	Forb	<i>Sphaeralcea coccinea</i>
31	Grass	<i>Elymus lanceolatus</i>	Non Vegetative	Litter
32	Grass	<i>Buchloe dactyloides</i>	Non Vegetative	Litter
33	Grass	<i>Buchloe dactyloides</i>	Non Vegetative	Litter
34	Grass	<i>Elymus lanceolatus</i>	Grass	<i>Elymus lanceolatus</i>
35	Grass	<i>Buchloe dactyloides</i>	Forb	<i>Sphaeralcea coccinea</i>
36	Grass	<i>Elymus lanceolatus</i>	Non Vegetative	Litter
37	Grass	<i>Elymus lanceolatus</i>	Non Vegetative	Litter
38	Noxious Weed C	<i>Bromus tectorum</i>	Noxious Weed C	<i>Bromus tectorum</i>
39	Grass	<i>Hesperostipa comata</i>	Non Vegetative	Litter
40	Noxious Weed C	<i>Bromus tectorum</i>	Grass	<i>Elymus elymoides</i>
41	Grass	<i>Elymus lanceolatus</i>	Non Vegetative	Litter
42	Noxious Weed C	<i>Bromus tectorum</i>	Grass	<i>Elymus elymoides</i>
43	Forb	<i>Heterotheca villosa</i>	Grass	<i>Bouteloua gracilis</i>
44	Grass	<i>Bouteloua gracilis</i>	Grass	<i>Bouteloua gracilis</i>
45			Non Vegetative	Litter
46	Grass	<i>Aristida Spp</i>	Grass	<i>Aristida Spp</i>
47			Non Vegetative	Bare Ground
48	Grass	<i>Bouteloua gracilis</i>	Grass	<i>Bouteloua gracilis</i>
49	Shrub	<i>Artemisia cana</i>	Shrub	<i>Artemisia cana</i>
50	Grass	<i>Buchloe dactyloides</i>	Non Vegetative	Bare Ground

Vegetation Survey (Field Data Table)

Client: PDC ENERGY INC
 Operator Location Information: CORNISH 22-10 Well (API # 05-123-24384)
 Transect ID: Reclaim Transect 2
 Transect Length: 445 ft.
 Assessment Date: 8/6/2020
 Inspector: Adam Roll

Point	Foliar	Species	Basal	Species
1	Grass	<i>Hesperostipa comata</i>	Non Vegetative	Litter
2	Grass	<i>Elymus elymoides</i>	Non Vegetative	Litter
3	Grass	<i>Buchloe dactyloides</i>	Grass	<i>Buchloe dactyloides</i>
4	Grass	<i>Buchloe dactyloides</i>	Grass	<i>Buchloe dactyloides</i>
5	Grass	<i>Elymus lanceolatus</i>	Non Vegetative	Litter
6	Grass	<i>Elymus lanceolatus</i>	Non Vegetative	Litter
7	Grass	<i>Buchloe dactyloides</i>	Non Vegetative	Litter
8	Grass	<i>Buchloe dactyloides</i>	Grass	<i>Buchloe dactyloides</i>
9	Grass	<i>Elymus lanceolatus</i>	Grass	<i>Elymus lanceolatus</i>
10			Non Vegetative	Rock
11	Grass	<i>Elymus lanceolatus</i>	Non Vegetative	Litter
12			Non Vegetative	Bare Ground
13	Grass	<i>Elymus lanceolatus</i>	Non Vegetative	Litter
14	Grass	<i>Elymus lanceolatus</i>	Non Vegetative	Litter
15	Forb	<i>Sphaeralcea coccinea</i>	Forb	<i>Sphaeralcea coccinea</i>
16	Noxious Weed C	<i>Bromus tectorum</i>	Non Vegetative	Litter
17	Grass	<i>Elymus lanceolatus</i>	Non Vegetative	Litter
18	Shrub	<i>Artemisia cana</i>	Shrub	<i>Artemisia cana</i>
19	Grass	<i>Bouteloua gracilis</i>	Grass	<i>Bouteloua gracilis</i>
20	Grass	<i>Buchloe dactyloides</i>	Grass	<i>Buchloe dactyloides</i>
21	Grass	<i>Buchloe dactyloides</i>	Grass	<i>Buchloe dactyloides</i>
22	Grass	<i>Bouteloua gracilis</i>	Non Vegetative	Litter
23	Forb	<i>Sphaeralcea coccinea</i>	Forb	<i>Sphaeralcea coccinea</i>
24	Grass	<i>Buchloe dactyloides</i>	Grass	<i>Buchloe dactyloides</i>
25	Grass	<i>Eragrostis trichodes</i>	Grass	<i>Eragrostis trichodes</i>
26	Grass	<i>Elymus elymoides</i>	Non Vegetative	Litter
27	Grass	<i>Bouteloua gracilis</i>	Non Vegetative	Litter
28	Grass	<i>Elymus lanceolatus</i>	Grass	<i>Elymus lanceolatus</i>
29	Grass	<i>Bouteloua gracilis</i>	Grass	<i>Bouteloua gracilis</i>
30	Grass	<i>Eragrostis trichodes</i>	Non Vegetative	Litter
31	Grass	<i>Hesperostipa comata</i>	Non Vegetative	Bare Ground
32	Grass	<i>Aristida Spp</i>	Grass	<i>Aristida Spp</i>
33	Grass	<i>Bouteloua gracilis</i>	Grass	<i>Bouteloua gracilis</i>
34	Forb	<i>Cirsium ochrocentrum</i>	Forb	<i>Cirsium ochrocentrum</i>
35	Grass	<i>Bouteloua gracilis</i>	Grass	<i>Bouteloua gracilis</i>
36	Grass	<i>Bouteloua gracilis</i>	Grass	<i>Bouteloua gracilis</i>
37	Grass	<i>Bouteloua gracilis</i>	Grass	<i>Bouteloua gracilis</i>
38	Grass	<i>Bouteloua gracilis</i>	Grass	<i>Bouteloua gracilis</i>
39	Grass	<i>Elymus lanceolatus</i>	Non Vegetative	Litter
40	Grass	<i>Buchloe dactyloides</i>	Grass	<i>Buchloe dactyloides</i>
41	Forb	<i>Kochia scoparia</i>	Non Vegetative	Litter
42	Grass	<i>Elymus elymoides</i>	Grass	<i>Elymus elymoides</i>
43	Forb	<i>Sphaeralcea coccinea</i>	Grass	<i>Buchloe dactyloides</i>
44	Grass	<i>Bouteloua gracilis</i>	Non Vegetative	Litter
45	Grass	<i>Aristida Spp</i>	Grass	<i>Aristida Spp</i>
46	Grass	<i>Buchloe dactyloides</i>	Grass	<i>Buchloe dactyloides</i>
47	Grass	<i>Buchloe dactyloides</i>	Non Vegetative	Litter
48	Grass	<i>Sporobolus cryptandrus</i>	Grass	<i>Sporobolus cryptandrus</i>
49	Forb	<i>Lygodesmia juncea</i>	Noxious Weed C	<i>Bromus tectorum</i>
50	Noxious Weed C	<i>Bromus tectorum</i>	Noxious Weed C	<i>Bromus tectorum</i>

Vegetation Survey (Field Data Table)

Client: PDC ENERGY INC
 Operator Location Information: CORNISH 22-10 Well (API # 05-123-24384)
 Transect ID: Reference Transect 1
 Transect Length: 444 ft.
 Assessment Date: 8/6/2020
 Inspector: Adam Roll

Point	Foliar	Species	Basal	Species
1	Grass	<i>Sporobolus cryptandrus</i>	Grass	<i>Sporobolus cryptandrus</i>
2	Forb	<i>Kochia scoparia</i>	Non Vegetative	Litter
3	Grass	<i>Sporobolus cryptandrus</i>	Forb	<i>Kochia scoparia</i>
4			Non Vegetative	Litter
5	Forb	<i>Helianthus petiolaris</i>	Non Vegetative	Litter
6	Forb	<i>Kochia scoparia</i>	Forb	<i>Kochia scoparia</i>
7			Non Vegetative	Litter
8	Forb	<i>Kochia scoparia</i>	Forb	<i>Kochia scoparia</i>
9	Grass	<i>Elymus elymoides</i>	Grass	<i>Elymus elymoides</i>
10	Forb	<i>Kochia scoparia</i>	Grass	<i>Elymus elymoides</i>
11	Grass	<i>Sporobolus cryptandrus</i>	Non Vegetative	Litter
12	Grass	<i>Buchloe dactyloides</i>	Non Vegetative	Litter
13	Grass	<i>Elymus lanceolatus</i>	Non Vegetative	Litter
14	Grass	<i>Sporobolus cryptandrus</i>	Non Vegetative	Litter
15	Grass	<i>Bouteloua gracilis</i>	Grass	<i>Bouteloua gracilis</i>
16	Grass	<i>Sporobolus cryptandrus</i>	Non Vegetative	Litter
17	Grass	<i>Bouteloua gracilis</i>	Grass	<i>Bouteloua gracilis</i>
18	Grass	<i>Bouteloua gracilis</i>	Grass	<i>Bouteloua gracilis</i>
19	Grass	<i>Elymus lanceolatus</i>	Grass	<i>Elymus lanceolatus</i>
20	Grass	<i>Sporobolus cryptandrus</i>	Non Vegetative	Litter
21	Grass	<i>Bouteloua gracilis</i>	Non Vegetative	Bare Ground
22	Shrub	<i>Artemisia cana</i>	Shrub	<i>Artemisia cana</i>
23			Non Vegetative	Litter
24	Shrub	<i>Artemisia cana</i>	Non Vegetative	Litter
25	Shrub	<i>Artemisia cana</i>	Noxious Weed C	<i>Bromus tectorum</i>
26	Noxious Weed C	<i>Bromus tectorum</i>	Noxious Weed C	<i>Bromus tectorum</i>
27	Forb	<i>Lygodesmia juncea</i>	Non Vegetative	Litter
28	Grass	<i>Sporobolus cryptandrus</i>	Non Vegetative	Litter
29	Grass	<i>Buchloe dactyloides</i>	Grass	<i>Buchloe dactyloides</i>
30	Grass	<i>Sporobolus cryptandrus</i>	Non Vegetative	Litter
31	Grass	<i>Bouteloua gracilis</i>	Grass	<i>Bouteloua gracilis</i>
32			Non Vegetative	Litter
33	Noxious Weed C	<i>Bromus tectorum</i>	Non Vegetative	Litter
34	Grass	<i>Elymus lanceolatus</i>	Grass	<i>Elymus lanceolatus</i>
35	Noxious Weed C	<i>Bromus tectorum</i>	Noxious Weed C	<i>Bromus tectorum</i>
36	Grass	<i>Elymus elymoides</i>	Non Vegetative	Litter
37	Noxious Weed C	<i>Bromus tectorum</i>	Grass	<i>Aristida Spp</i>
38	Grass	<i>Sporobolus cryptandrus</i>	Non Vegetative	Bare Ground
39	Grass	<i>Sporobolus cryptandrus</i>	Grass	<i>Sporobolus cryptandrus</i>
40	Grass	<i>Elymus lanceolatus</i>	Grass	<i>Elymus lanceolatus</i>
41	Grass	<i>Elymus elymoides</i>	Non Vegetative	Litter
42	Grass	<i>Elymus lanceolatus</i>	Non Vegetative	Litter
43	Noxious Weed C	<i>Bromus tectorum</i>	Noxious Weed C	<i>Bromus tectorum</i>
44	Noxious Weed C	<i>Bromus tectorum</i>	Noxious Weed C	<i>Bromus tectorum</i>
45	Noxious Weed C	<i>Bromus tectorum</i>	Grass	<i>Elymus elymoides</i>
46	Grass	<i>Elymus elymoides</i>	Non Vegetative	Litter
47	Noxious Weed C	<i>Bromus tectorum</i>	Grass	<i>Bouteloua gracilis</i>
48	Noxious Weed C	<i>Bromus tectorum</i>	Noxious Weed C	<i>Bromus tectorum</i>
49	Noxious Weed C	<i>Bromus tectorum</i>	Forb	<i>Sphaeralcea coccinea</i>
50	Noxious Weed C	<i>Bromus tectorum</i>	Noxious Weed C	<i>Bromus tectorum</i>

Vegetation Survey (Field Data Table)

Client: PDC ENERGY INC
 Operator Location Information: CORNISH 22-10 Well (API # 05-123-24384)
 Transect ID: Reference Transect 2
 Transect Length: 445 ft.
 Assessment Date: 8/6/2020
 Inspector: Adam Roll

Point	Foliar	Species	Basal	Species
1	Noxious Weed C	<i>Bromus tectorum</i>	Noxious Weed C	<i>Bromus tectorum</i>
2	Noxious Weed C	<i>Bromus tectorum</i>	Grass	<i>Elymus elymoides</i>
3	Noxious Weed C	<i>Bromus tectorum</i>	Grass	<i>Elymus elymoides</i>
4	Noxious Weed C	<i>Bromus tectorum</i>	Noxious Weed C	<i>Bromus tectorum</i>
5			Non Vegetative	Bare Ground
6	Noxious Weed C	<i>Bromus tectorum</i>	Grass	<i>Sporobolus cryptandrus</i>
7	Grass	<i>Elymus elymoides</i>	Grass	<i>Elymus elymoides</i>
8	Forb	<i>Sphaeralcea coccinea</i>	Forb	<i>Sphaeralcea coccinea</i>
9	Grass	<i>Sporobolus cryptandrus</i>	Non Vegetative	Litter
10	Grass	<i>Buchloe dactyloides</i>	Grass	<i>Buchloe dactyloides</i>
11	Shrub	<i>Artemisia cana</i>	Non Vegetative	Litter
12	Shrub	<i>Artemisia cana</i>	Non Vegetative	Litter
13	Noxious Weed C	<i>Bromus tectorum</i>	Non Vegetative	Litter
14	Grass	<i>Buchloe dactyloides</i>	Grass	<i>Buchloe dactyloides</i>
15	Grass	<i>Elymus lanceolatus</i>	Grass	<i>Elymus lanceolatus</i>
16	Forb	<i>Sphaeralcea coccinea</i>	Non Vegetative	Litter
17	Grass	<i>Elymus elymoides</i>	Grass	<i>Elymus elymoides</i>
18	Noxious Weed C	<i>Bromus tectorum</i>	Noxious Weed C	<i>Bromus tectorum</i>
19	Grass	<i>Sporobolus cryptandrus</i>	Non Vegetative	Litter
20	Grass	<i>Bouteloua gracilis</i>	Non Vegetative	Litter
21	Grass	<i>Sporobolus cryptandrus</i>	Non Vegetative	Litter
22	Noxious Weed C	<i>Bromus tectorum</i>	Grass	<i>Bouteloua gracilis</i>
23	Shrub	<i>Artemisia cana</i>	Shrub	<i>Artemisia cana</i>
24	Noxious Weed C	<i>Bromus tectorum</i>	Grass	<i>Bouteloua gracilis</i>
25	Grass	<i>Buchloe dactyloides</i>	Grass	<i>Buchloe dactyloides</i>
26	Grass	<i>Aristida Spp</i>	Non Vegetative	Litter
27	Grass	<i>Elymus lanceolatus</i>	Grass	<i>Elymus lanceolatus</i>
28	Shrub	<i>Artemisia cana</i>	Noxious Weed C	<i>Bromus tectorum</i>
29	Forb	<i>Kochia scoparia</i>	Forb	<i>Kochia scoparia</i>
30	Forb	<i>Conyza canadensis</i>	Grass	<i>Bouteloua gracilis</i>
31	Grass	<i>Sporobolus cryptandrus</i>	Grass	<i>Sporobolus cryptandrus</i>
32	Noxious Weed C	<i>Bromus tectorum</i>	Grass	<i>Bouteloua gracilis</i>
33	Forb	<i>Sphaeralcea coccinea</i>	Forb	<i>Sphaeralcea coccinea</i>
34	Grass	<i>Bouteloua gracilis</i>	Grass	<i>Bouteloua gracilis</i>
35	Grass	<i>Bouteloua gracilis</i>	Grass	<i>Bouteloua gracilis</i>
36			Non Vegetative	Bare Ground
37	Noxious Weed C	<i>Bromus tectorum</i>	Non Vegetative	Litter
38	Grass	<i>Elymus lanceolatus</i>	Grass	<i>Elymus lanceolatus</i>
39			Non Vegetative	Litter
40	Forb	<i>Kochia scoparia</i>	Forb	<i>Kochia scoparia</i>
41	Forb	<i>Kochia scoparia</i>	Forb	<i>Kochia scoparia</i>
42	Noxious Weed C	<i>Bromus tectorum</i>	Grass	<i>Bouteloua gracilis</i>
43	Noxious Weed C	<i>Bromus tectorum</i>	Grass	<i>Elymus elymoides</i>
44	Forb	<i>Sisymbrium altissimum</i>	Grass	<i>Sporobolus cryptandrus</i>
45	Grass	<i>Sporobolus cryptandrus</i>	Grass	<i>Sporobolus cryptandrus</i>
46	Forb	<i>Kochia scoparia</i>	Forb	<i>Kochia scoparia</i>
47	Grass	<i>Sporobolus cryptandrus</i>	Non Vegetative	Litter
48	Forb	<i>Helianthus petiolaris</i>	Non Vegetative	Litter
49	Grass	<i>Sporobolus cryptandrus</i>	Non Vegetative	Litter
50	Grass	<i>Sporobolus cryptandrus</i>	Grass	<i>Sporobolus cryptandrus</i>