

The Road to Excellence Starts with Safety

Sold To #: 348459	Ship To #: 3649279	Quote #:	Sales Order #: 0902158017
Customer: GREAT WESTERN OIL & GAS LLC - eBUS		Customer Rep:	
Well Name: DeTienne	Well #: FD10-242HN	API/UWI #:	
Field:	City (SAP): WINDSOR	County/Parish: WELD	State: COLORADO
Legal Description:			
Contractor: CRAIG ENERGY		Rig/Platform Name/Num: CRAIG 4	
Job BOM: 7521			
Well Type: GAS			
Sales Person: HALAMERICA\HB60191		Srv Supervisor: VAUGHN OTERI	
Job			

Formation Name	
Formation Depth (MD)	Top Bottom
Form Type	BHST
Job depth MD	1065ft Job Depth TVD
Water Depth	Wk Ht Above Floor
Perforation Depth (MD)	From To

Well Data

Description	New / Used	Size in	ID in	Weight lbm/ft	Thread	Grade	Top MD ft	Bottom MD ft	Top TVD ft	Bottom TVD ft
Casing		9.625	8.921	36	STC	J-55	0	1055	0	1055
Open Hole Section			13.5				0	1065	0	1065

Tools and Accessories

Type	Size in	Qty	Make	Depth ft	Type	Size in	Qty	Make
Guide Shoe	9.625				Top Plug	9.625		HES
Float Shoe	9.625			1055	Bottom Plug	9.625		HES
Float Collar	9.625			1010	SSR plug set	9.625		HES
Insert Float	9.625				Plug Container	9.625		HES
Stage Tool	9.625				Centralizers	9.625		HES

Miscellaneous Materials

Gelling Agt	Conc	Surfactant	Conc	Acid Type	Qty	Conc
Treatment Fld	Conc	Inhibitor	Conc	Sand Type	Size	Qty

Fluid Data

Stage/Plug #: 1

Fluid #	Stage Type	Fluid Name	Qty	Qty UoM	Mixing Density lbm/gal	Yield ft3/sack	Mix Fluid Gal	Rate bbl/min	Total Mix Fluid Gal
1	Fresh Water Spacer	Fresh Water Spacer	10	bbl	8.3			3	

Fluid #	Stage Type	Fluid Name	Qty	Qty UoM	Mixing Density lbm/gal	Yield ft3/sack	Mix Fluid Gal	Rate bbl/min	Total Mix Fluid Gal
2	SwiftCem B2	SWIFTCM (TM) SYSTEM	470	sack	14.2	1.54		6	7.66

HALLIBURTON***Cementing Job Summary***

7.66 Gal		FRESH WATER							
Fluid #	Stage Type	Fluid Name	Qty	Qty UoM	Mixing Density lbm/gal	Yield ft ³ /sack	Mix Fluid Gal	Rate bbl/min	Total Mix Fluid Gal
3	Displacement	Displacement	78	bbl	8.33			6	
Cement Left In Pipe		Amount		45 ft		Reason		Shoe Joint	
Comment									

1.0 Real-Time Job Summary

1.1 Job Event Log

Type	Seq. No.	Activity	Graph Label	Date	Time	Source	Comb Pump Rate (gpm)	DH Density (ppg)	PS Pump Press (psi)	Comments
Event	1	Call Out	Call Out	2/22/2015	10:00:00	USER				CALL OUT FROM AMS OFFICE
Event	2	Arrive At Loc	Arrive At Loc	2/22/2015	19:00:00	USER				ARRIVE ON LOCATION EARLY DUE TO IN COMING BAD WEATHER MET WITH COMPANY REP TO DISCUSS JOB PROCESS AND CONCERNS ADVISED THAT THEY WERE FIXING RIG THEN WOULD HAVE TO COMPLETE DRILLING THEN RUN CASING, PREPARED PUMP TRUCK FOR SUB ZERO TEMPS
Event	3	Casing on Bottom	Casing on Bottom	2/23/2015	05:00:00	USER				ADVISED BY RIG CREW THAT CASING WAS ON BOTTOM AND WAS SAFE FOR HES TO RIG UP TO RIG FLOOR
Event	4	Start Job	Start Job	2/23/2015	07:21:25	COM6	0	8.79	1772.00	HELD PREJOB SAFETY MEETING IN DOG HOUSE WITH ALL HANDS ON LOCATION TO DISCUSS JOB PROCESS AND HAZARDS
Event	5	Test Lines	Test Lines	2/23/2015	07:22:21	COM6	0	8.78	2739.00	PRESSURE TESTED PUMPS AND LINES FOUND NO LEAKS AND PRESSURE HELD GOOD
Event	6	Pump Spacer 1	Pump Spacer 1	2/23/2015	07:24:16	COM6	0	8.73	21.00	PUMPED 108BL OF FRESH WATER WITH RED TRACER DYE 2:58PM 32PSI

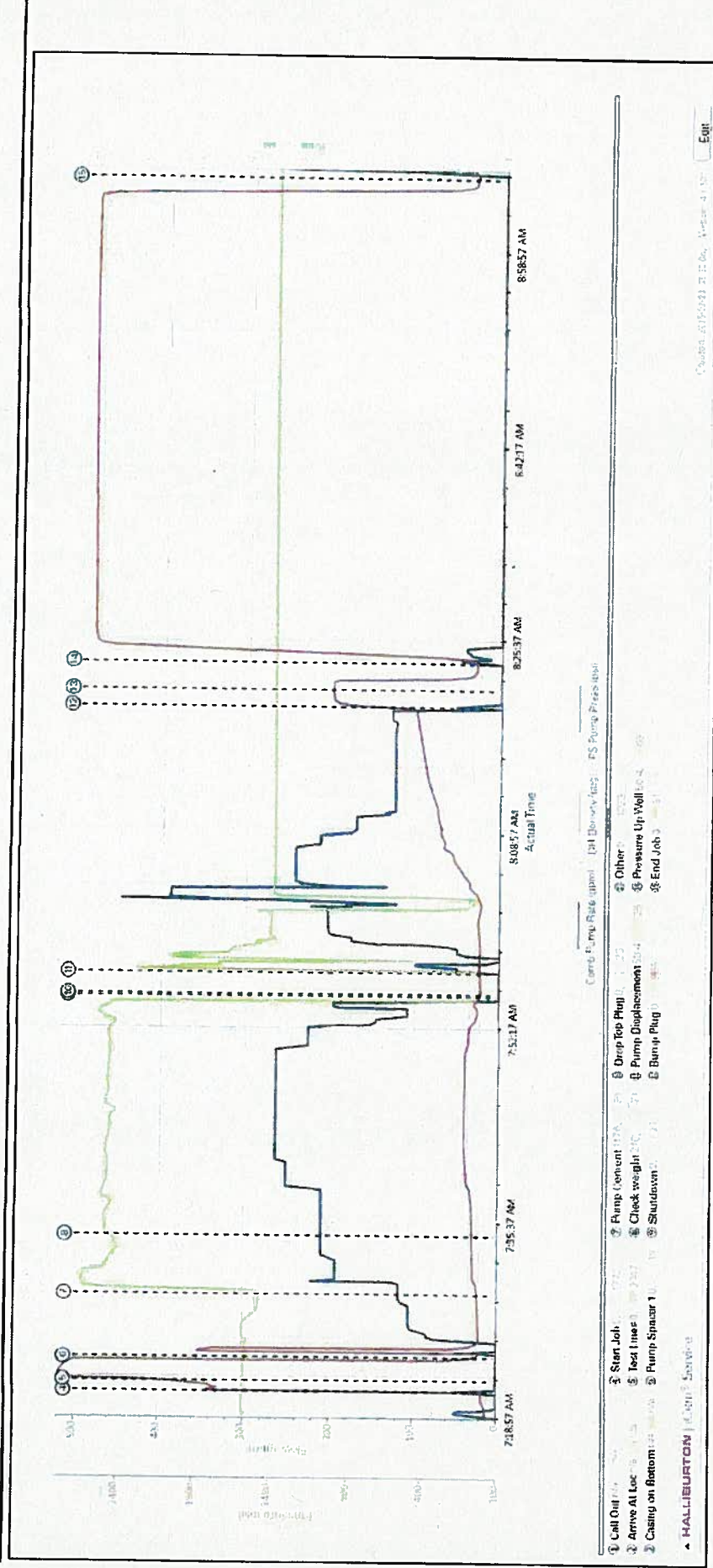
Customer: GREAT WESTERN OIL & GAS LLC - eBUS
 Job: Great Western DeTienne FD10-242HN Surface
 Case: Case 1

Event	7	Pump Cement	Pump Cement	2/23/2015	07:29:43	COM6	118	8.20	29.00	MIXED 1288RL OF 14.12PPG SWITTCEN AT 6.08PM 102PSI
Event	8	Check Weight	Check weight	2/23/2015	07:34:45	COM6	210	14.16	70.00	CONFIRMED WEIGHT WITH SCALES
Event	9	Shutdown	Shutdown	2/23/2015	07:55:34	COM6	0	-0.24	21.00	
Event	10	Drop Top Plug	Drop Top Plug	2/23/2015	07:55:26	COM6	0	-0.25	20.00	RELEASED PLUG WITNESSED BY COMPANY REP
Event	11	Pump Displacement	Pump Displacement	2/23/2015	07:57:17	COM6	50	-0.01	24.00	PUMPED 788BL OF FRESH WATER TO DISPLACE CEMENT
Event	12	Bump Plug	Bump Plug	2/23/2015	08:20:09	COM6	0	7.79	950.00	BUMPED PLUG 500PSI OVER FINAL PUMP PRESSURE
Event	13	Other	Other	2/23/2015	08:21:37	COM6	0	7.79	1023.00	RELEASED PRESSURE BACK TO PUMP TRUCK TO CHECK FLOATS, FLOATS HELD GOOD 1.08BL BACK
Event	14	Pressure Up Well	Pressure Up Well	2/23/2015	08:23:53	COM6	50	7.79	68.00	PRESSURE TESTED CASING PER GREAT WESTERN POLICY
Event	15	End Job	End Job	2/23/2015	09:05:33	COM6	0	7.86	91.00	

iCem Service
 (v. 4.1.107)
 Created: Monday, February 23, 2015

2.0 Attachments

2.1 Case 1-Custom Results.png



3.0 Custom Graphs

3.1 Custom Graph

