

HALLIBURTON

iCem® Service

GREAT WESTERN OIL & GAS LLC

For:

Date: Saturday, February 21, 2015

DETIENNE FD10-239HC

Case 1

Job Date: Friday, February 20, 2015

Sincerely,

The Road to Excellence Starts with Safety

Sold To #: 346459	Ship To #: 3649243	Quote #:	Sales Order #: 0902157830
Customer: GREAT WESTERN OIL & GAS LLC - eBUS		Customer Rep: SHANNON DAVIS	
Well Name: DeTienne	Well #: FD10-239HC	API/UWI #:	
Field:	City (SAP): WINDSOR	County/Parish: WELD	State: COLORADO
Legal Description:			
Contractor: CRAIG ENERGY		Rig/Platform Name/Num: CRAIG 4	
Job BOM: 7521			
Well Type: GAS			
Sales Person: HALAMERICA\HB60191		Srcv Supervisor: Joseph Scileppi	
Job			

Formation Name			
Formation Depth (MD)	Top		Bottom
Form Type	BHST		
Job depth MD	1062ft		Job Depth TVD
Water Depth	Wk Ht Above Floor		
Perforation Depth (MD)	From		To

Well Data										
Description	New / Used	Size in	ID in	Weight lbm/ft	Thread	Grade	Top MD ft	Bottom MD ft	Top TVD ft	Bottom TVD ft
Casing		9.625	8.921	36	STC	J-55	0	1052	0	0
Open Hole Section			13.5				0	1062	0	0

Tools and Accessories									
Type	Size in	Qty	Make	Depth ft		Type	Size in	Qty	Make
Guide Shoe	9.625			1052		Top Plug	9.625		HES
Float Shoe	9.625					Bottom Plug	9.625		HES
Float Collar	9.625					SSR plug set	9.625		HES
Insert Float	9.625					Plug Container	9.625		HES
Stage Tool	9.625					Centralizers	9.625		HES

Miscellaneous Materials											
Gelling Agt		Conc		Surfactant		Conc		Acid Type		Qty	Conc
Treatment Fld		Conc		Inhibitor		Conc		Sand Type		Size	Qty

Fluid Data

Stage/Plug #: 1										
Fluid #	Stage Type	Fluid Name	Qty	Qty UoM	Mixing Density lbm/gal	Yield ft3/sack	Mix Fluid Gal	Rate bbl/min	Total Mix Fluid Gal	
1	Fresh Water Spacer	DYE WATER	10	bbl	8.4			6		

Fluid #	Stage Type	Fluid Name	Qty	Qty UoM	Mixing Density lbm/gal	Yield ft3/sack	Mix Fluid Gal	Rate bbl/min	Total Mix Fluid Gal	
2	SwiftCem B2	SWIFTCM (TM) SYSTEM	470	sack	14.2	1.54		6	7.66	

7.66 Gal		FRESH WATER							
Fluid #	Stage Type	Fluid Name	Qty	Qty UoM	Mixing Density lbm/gal	Yield ft3/sack	Mix Fluid Gal	Rate bbl/min	Total Mix Fluid Gal
3	Displacement	Displacement	77.8	bbl	8.33			6	
Cement Left In Pipe Amount 46 ft Reason Shoe Joint									
Mix Water: pH ##		Mix Water ## ppm Chloride:			Mix Water Temperature: ## °F °C				
Cement Temperature: ## °F °C		Plug Displaced by: ## lb/gal kg/m3 XXXX			Disp. Temperature: ## °F °C				
Plug Bumped? Yes/No		Bump Pressure: ##### psi MPa			Floats Held? Yes/No				
Cement Returns: ## bbl m3		Returns Density: ## lb/gal kg/m3			Returns Temperature: ## °F °C				
Comment 27 BBLS OF CMT BACK TO SURFACE									

1.0 Real-Time Job Summary

1.1 Job Event Log

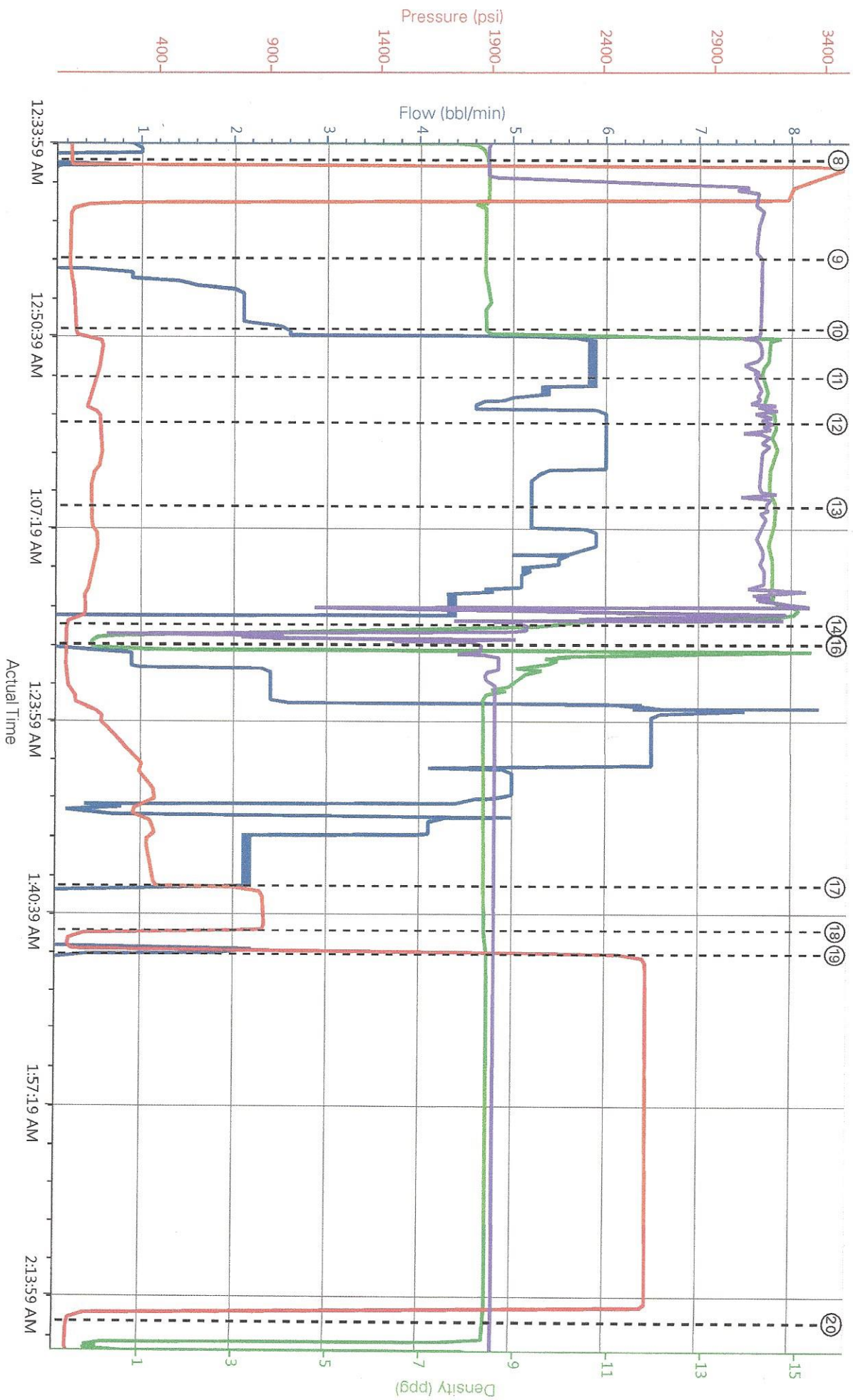
Type	Seq. No.	Activity	Graph Label	Date	Time	Source	Comb Pump Rate (bbl/min)	DH Density (ppg)	PS Pump Press (psi)	Recirc Density (ppg)	Comments
Event	1	Call Out	Call Out	2/20/2015	18:20:00	USER					
Event	2	Crew Leave Yard	Crew Leave Yard	2/20/2015	21:45:00	USER					PRE JOURNEY JSA WITH CREW
Event	3	Arrive At Loc	Arrive At Loc	2/20/2015	23:00:00	USER					RIG ON BOTTOM UPON ARRIVAL
Event	4	Rig-Up Equipment	Rig-Up Equipment	2/20/2015	23:15:00	USER					PRE RIG UP JSA WITH CREW
Event	5	Rig-Up Completed	Rig-Up Completed	2/20/2015	23:45:00	USER					
Event	6	Pre-Job Safety Meeting	Pre-Job Safety Meeting	2/21/2015	00:05:00	USER	0.00	0.01	15.00	0.00	JSA WITH ALL INVOLVED PERSONNEL
Event	7	Start Job	Start Job	2/21/2015	00:33:00	COM5	0.00	8.33	0.00	8.43	
Event	8	Test Lines	Test Lines	2/21/2015	00:35:38	COM5	0.00	8.32	0.00	8.36	TESTED LINES TO 3400 PSI, NO VISIBLE LEAKS
Event	9	Pump Spacer 1	Pump Spacer 1	2/21/2015	00:44:12	COM5	0.00	8.30	-4.00	14.17	PUMPED 10 BBL5 OF DYE WATER AT 2 BPM AT 32 PSI
Event	10	Pump Lead Cement	Pump Lead Cement	2/21/2015	00:50:16	COM5	2.60	8.31	24.00	14.14	PUMPED 470 SKS OR 128.9 BBL5 14.2 SWIFTCEM AT 5.5 BPM AT 110 PSI
Event	11	Check Weight	Check weight	2/21/2015	00:54:24	COM5	5.80	14.23	102.00	14.15	
Event	12	Check Weight	Check weight	2/21/2015	00:58:18	COM5	6.00	14.48	141.00	14.19	
Event	13	Check Weight	Check weight	2/21/2015	01:05:40	COM5	5.20	14.47	98.00	14.36	
Event	14	Shutdown	Shutdown	2/21/2015	01:15:51	COM5	0.00	8.34	-16.00	9.10	
Event	15	Drop Top Plug	Drop Top Plug	2/21/2015	01:17:31	COM5	0.00	-0.05	-16.00	8.21	PLUG PRE LOADED AND WITNESSED BY COMPANY REP

iCem Service

(v. 4.1.107)

Created: Saturday, February 21, 2015

Event	16	Pump Displacement	Pump Displacement	2/21/2015	01:17:35	COM5	0.00	-0.05	-16.00	8.20	PUMPED 77.8 BBLs OF FRESH WATER AT 6.5 BPM AT 220 PSI, GOT 27 BBLs CMT BACK TO SURFACE
Event	17	Bump Plug	Bump Plug	2/21/2015	01:38:29	COM5	0.00	8.32	830.00	8.51	BUMPED PLUG ON CALCULATED AT 445PSI
Event	18	Other	Other	2/21/2015	01:42:23	COM5	0.00	8.30	46.00	8.51	CHECKED FLOATS GOT 1/2 BBL BACK TO TRUCK, FLOATS HELD
Event	19	Pressure Up Well	Pressure Up Well	2/21/2015	01:44:27	COM5	0.00	8.36	2575.00	8.51	30 MIN CASING TEST AT 2400 PSI
Event	20	End Job	End Job	2/21/2015	02:16:25	COM5	0.00	8.32	-1.00	8.50	RELEASED PRESSURE AND GOT 1 BBL BACK. TEST WAS SUCCESSFUL.



- ① Call Out n/a;n/a;n/a
- ② Crew Leave Yard n/a;n/a;n/a
- ③ Arrive At Loc n/a;n/a;n/a
- ④ Rig-Up Equipment n/a;n/a;n/a
- ⑤ Rig-Up Completed n/a;n/a;n/a
- ⑥ Pre-Job Safety Meeting 0:0:01;15:0
- ⑦ Start Job 0:8:33;0:8:43
- ⑧ Test Lines 0:8:32;0:8:36
- ⑨ Pump Spacer 1:0:8:3;4:14:17
- ⑩ Pump Lead Cement 2:6:8:31;24:14:14
- ⑪ Check weight 5;
- ⑫ Check weight 6;