

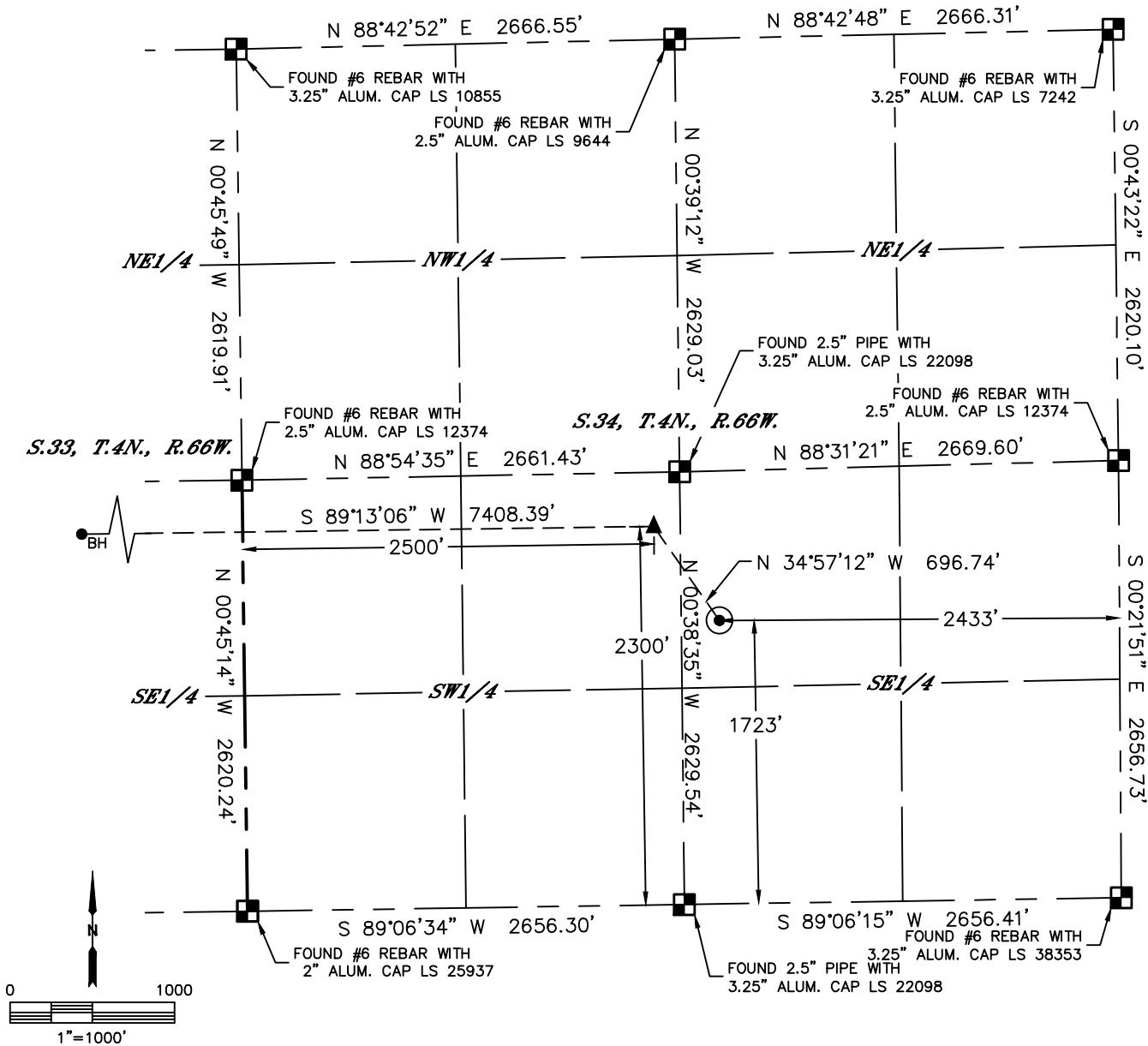


Lat40°, Inc. 6250 W. 10th Street, Unit 2, Greeley, CO 970-515-5294

# WELL LOCATION CERTIFICATE

## STEAMBOAT 1N

SECTION: 34  
TOWNSHIP: 4N  
RANGE: 66W  
6TH. P.M.  
WELD COUNTY, CO



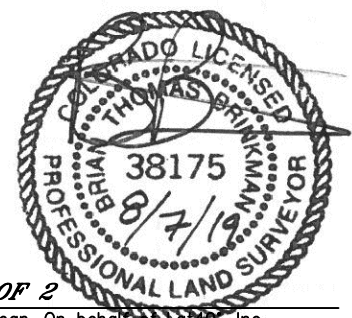
CLIENT: PDC ENERGY, INC.				LANDMAN: KRISTY WEYERMAN			
INSTRUMENT OPERATOR: DUNCAN HOTCHKISS				SURVEY DATE: 4/17/2019		SURFACE USE: CROPLAND	
SHL FOOTAGE		SHL LAT°	SHL LONG°	SHL PDOP	SHL ELEV (FT.)	SHL 1/4/1/4	SHL S-T-R
1723	FSL 2433	FEL	40.26575	-104.76256	1.3	4804	NWSE 34-4-66

BHL FOOTAGE	BHL LAT°	BHL LONG°	BHL S-T-R	EP LAT°	EP LONG°	EP S-T-R
2300	FSL 400	FWL	40.26722	-104.79051	33-4-66	40.26733 -104.76397 34-4-66

- LEGEND**
- = ALIQUOT MONUMENT AS DESCRIBED
  - = CALCULATED POSITION
  - = SURFACE HOLE LOCATION (SHL)
  - ▲ = ENTRY POINT LOCATION (EP)
  - <sub>BH</sub> = BOTTOM HOLE LOCATION (BHL)
  - ⊙ = EXISTING WELL
  - ⊙ = ABANDONED WELL

**NOTE:**

- 1) Bearings shown are Grid Bearings of the Colorado State Plane Coordinate System, North Zone, North American Datum 1983. The lineal dimensions as contained herein are based upon the "U.S. Survey Foot."
- 2) Distances to section lines measured at 90 degrees from said section lines.
- 3) Ground elevations are based on an observed GPS elevation (NAVD 1988 DATUM).
- 4) Latitude and Longitude shown are (NAD 83 DATUM).
- 5) IMPROVEMENTS: See LOCATION DRAWING for all visible improvements within 500' of oil and gas location.
- 6) This map does not represent a boundary survey.



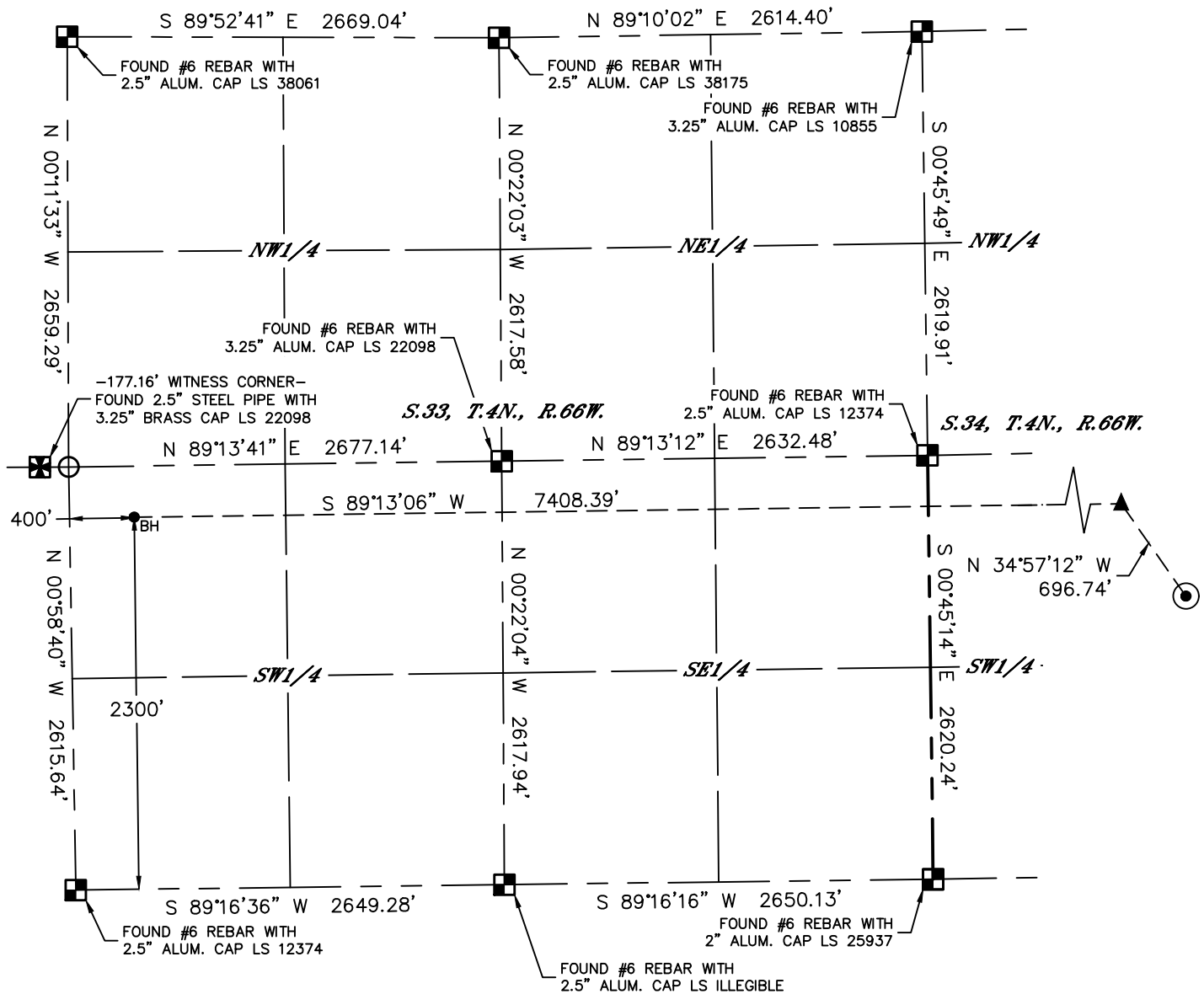
**SHEET 1 OF 2**  
 Brian T. Brinkman—On behalf of Lat40, Inc.  
 Colorado Licensed Professional Land Surveyor No. 38175  
 DATE: 8/7/2019  
 PROJECT#: 2017110



# WELL LOCATION CERTIFICATE

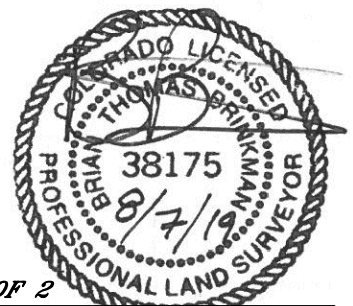
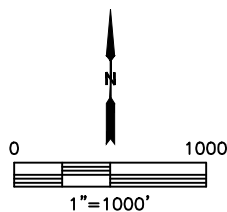
## STEAMBOAT 1N

SECTION: 34  
TOWNSHIP: 4N  
RANGE: 66W  
6TH. P.M.  
WELD COUNTY, CO



### LEGEND

- = ALIQUOT MONUMENT AS DESCRIBED
- = CALCULATED POSITION
- = SURFACE HOLE LOCATION (SHL)
- = ENTRY POINT LOCATION (EP)
- = BOTTOM HOLE LOCATION (BHL)
- = EXISTING WELL
- = ABANDONED WELL



**SHEET 2 OF 2**

Brian T. Brinkman—On behalf of Lat40°, Inc.  
Colorado Licensed Professional Land Surveyor No. 38175  
DATE: 8/7/2019  
PROJECT#: 2017110