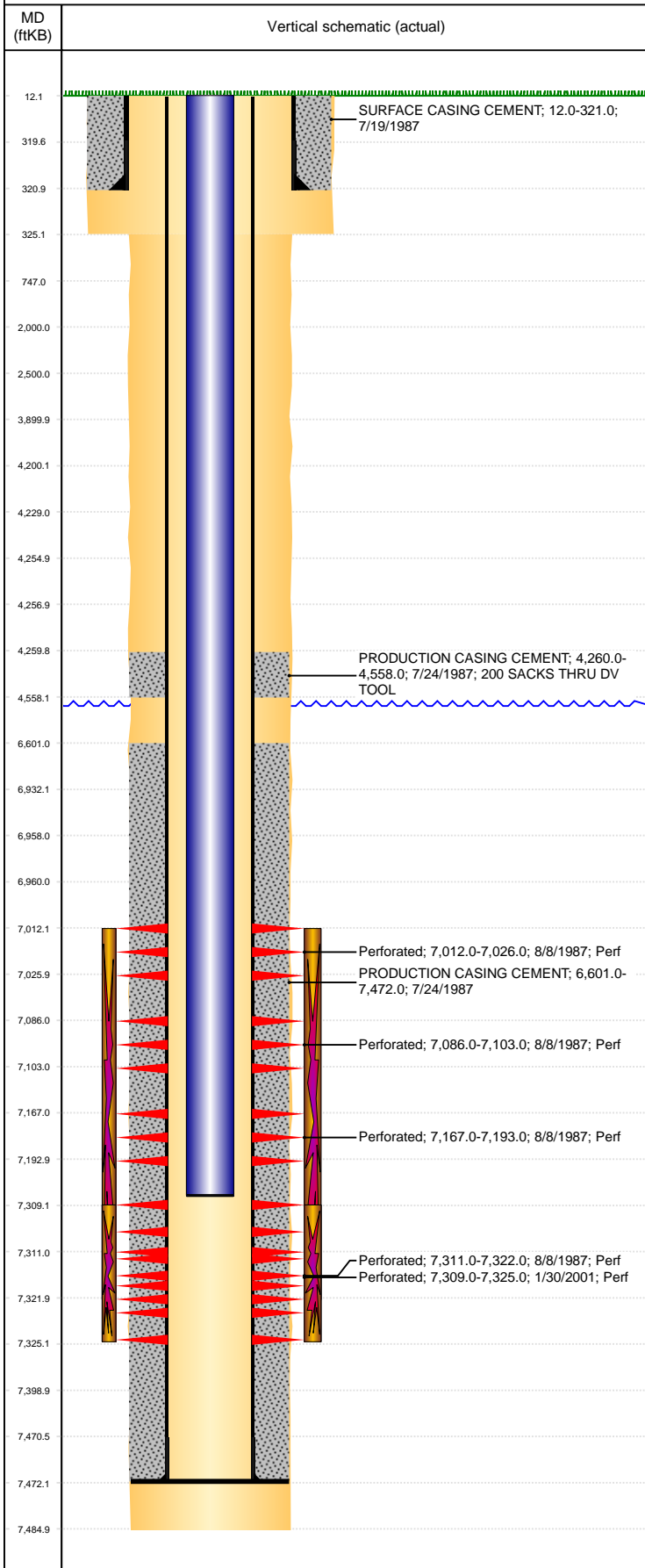


**Well Name: HAMBERT RG32-05**

VERTICAL, ORIGINAL HOLE, 9/2/2020 11:42:08 AM



Well Header									
API 05-123-13445		Business Unit DJ BASIN			District 15		Well Config VERTICAL		
KB - GL / MSL (ft... 12.00		Spud Date 7/18/1987		P & A Date		Well Production Status PR			SoRT No
Comment DV TOOL @ 4700									
Surface Location (Congressional)									
Qtr 3 SW	Qtr 4 NW	Section 32	Twnshp 4	Twnsh... N	Range 65	Rng E/... W	Actual Latitude (°) 40.27060146		Actual Longitude (°) -104.69453448
Wellbore Sections									
Section Des			Size (in)			Act Top, MD (ftKB)		Act Btm, MD (ftKB)	
SURFACE			12 1/4			12		325	
PRODUCTION			7 7/8			325		7,485	
Casing Strings									
Csg Des		Run Date		OD (in)	Wt/Len (lb/ft)	Grade	Top, MD (ftKB)	MD (ftKB)	
Surface		7/19/1987		8 5/8	24.00		12.0	321.0	
Production		7/24/1987		4 1/2	15.10	N80	12.0	7,472.0	
Cement									
Des					Start Date		Top (ftKB)		Btm (ftKB)
SURFACE CASING CEMENT					7/19/1987		12.0		321.0
PRODUCTION CASING CEMENT					7/24/1987		4,260.0		4,558.0
PRODUCTION CASING CEMENT					7/24/1987		6,601.0		7,472.0
Zone Statuses									
Zone Name		Status Date	Status	Fluid Type	Job			Prod Method	
CODELL		2/9/2001	PR		RE-FRAC, 1/24/2001 00:00				
CODELL		7/2/2008	PR		TRI-FRAC, 5/14/2008 12:00				
NIOBRARA		8/8/1987	PR		DRILLING/COMPLETION - ORIGINAL, 7/18/1987...				
Perforation Data									
Linked Zone			Bnch/Stg	Entered Shot Total	Top (ftKB)		Btm (ftKB)		Date
NIOBRARA, ORIGINAL HOLE			A	2	7,012.00		7,026.00		8/8/1987
NIOBRARA, ORIGINAL HOLE			B	5	7,086.00		7,103.00		8/8/1987
NIOBRARA, ORIGINAL HOLE			C	3	7,167.00		7,193.00		8/8/1987
CODELL, ORIGINAL HOLE				64	7,309.00		7,325.00		1/30/2001
CODELL, ORIGINAL HOLE				5	7,311.00		7,322.00		8/8/1987
Stimulation Intervals									
Zone				Start Date		Top (ftKB)		Btm (ftKB)	
CODELL, ORIGINAL HOLE				8/7/1987		7,012.0		7,322.0	
CODELL, ORIGINAL HOLE				2/5/2001		7,309.0		7,325.0	
CODELL, ORIGINAL HOLE				5/28/2008		7,309.0		7,325.0	
Other In Hole									
Run Date		Des			Make		OD (in)	Top (ftKB)	Btm (ftKB)
Logs									
Date		Type					Top, MD (ftKB)		Btm, MD (ftKB)
7/23/1987		DUAL COMPESATED POROSITY LOG					4,450.0		7,457.0
7/23/1987		DUAL INDUCTION LOG					250.0		7,475.0
8/5/1987		SONIC CEMENT BOND LOG					6,500.0		7,396.0
2/28/2018		GYRO					12.0		7,200.0
Plug Back Total Depths									
Date		Type		Com					Depth (ftKB)
8/5/1987		CEMENT PLUG		DEPTH LOGGER ON CBL					7,399.0
5/30/2008		FILL		C/O LAND TUBING					7,472.0