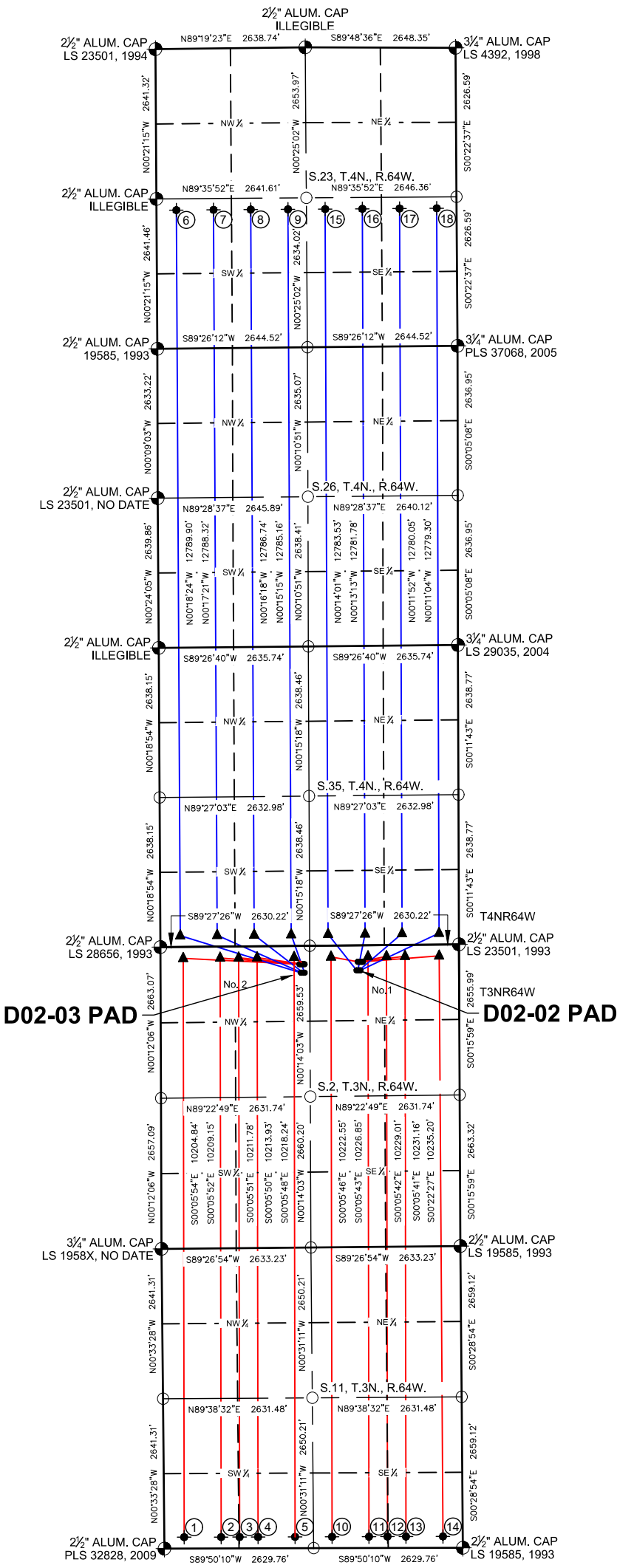
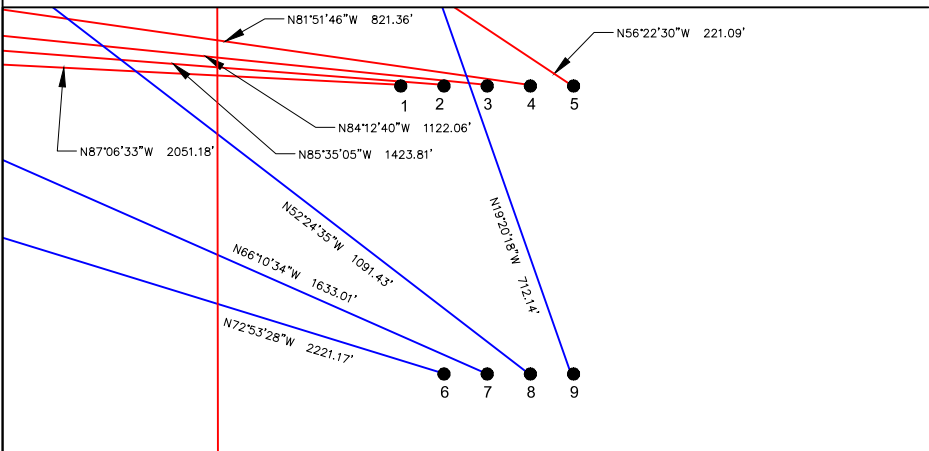


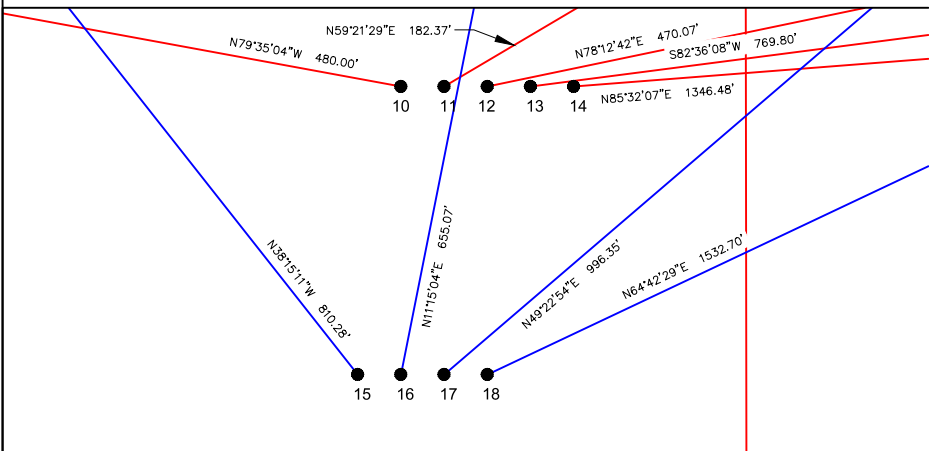
D02-03 PAD & D02-02 PAD  
MULTI-WELL LOCATION PLAT / MULTI-WELL PLAN  
T3N R64W SECTION 2



PROPOSED WELLBORE DIRECTION DATA  
D02-03 PAD  
SLOTS 1-9



PROPOSED WELLBORE DIRECTION DATA  
D02-02 PAD  
SLOTS 10-18



LEGEND

- FOUND MONUMENT
- CALCULATED POSITION
- PROPOSED WELL
- BOTTOM HOLE
- TOP OF PRODUCTION ZONE

- Notes:
- 1) All bearings are Grid Bearings of the Colorado State Plane Coordinate System, North Zone, North American Datum 1983/2011. The lineal dimensions as shown herein are grid distances based upon the "U.S. Survey Foot." To get ground distances multiply shown distance by 1.000265.
  - 2) Distances are measured at 90° from section line of the Sixth Principal Meridian, County of Weld, State of Colorado.
  - 3) Ground elevations are based on an observed GPS elevation (NAVD 1988 DATUM).
  - 4) Surface use: "RANGELAND"
  - 5) Instrument Operator: David Born
  - 6) This map does not represent a boundary survey.

DISCLAIMER:  
THIS PLOT DOES NOT REPRESENT A MONUMENTED LAND SURVEY AND SHOULD NOT BE RELIED UPON TO DETERMINE BOUNDARY LINES, PROPERTY OWNERSHIP OR OTHER PROPERTY INTERESTS. PARCEL LINES, IF DEPICTED HAVE NOT BEEN FIELD VERIFIED AND MAY BE BASED UPON PUBLICLY AVAILABLE DATA THAT ALSO HAS NOT BEEN INDEPENDENTLY VERIFIED.

SURFACE HOLE LOCATION								TOP OF PRODUCTIVE ZONE		BOTTOM HOLE LOCATION	
SLOT	WELL NAME	LATITUDE	LONGITUDE	FOOTAGE		QTR-QTR	ELEV.	FOOTAGE		FOOTAGE	
1	BOOTH D11-785	40.26086°N	104.51891°W	323' FNL	2448' FWL	NO. 2	4699'	200' FNL	400' FWL	200' FSL	350' FWL
2	BOOTH D11-775	40.26086°N	104.51883°W	324' FNL	2471' FWL	NO. 2	4700'	200' FNL	1052' FWL	200' FSL	1001' FWL
3	BOOTH D11-770	40.26086°N	104.51875°W	324' FNL	2493' FWL	NO. 2	4700'	200' FNL	1377' FWL	200' FSL	1327' FWL
4	BOOTH D11-765	40.26086°N	104.51866°W	324' FNL	2516' FWL	NO. 2	4700'	200' FNL	1703' FWL	200' FSL	1653' FWL
5	BOOTH D11-755	40.26086°N	104.51858°W	324' FNL	2538' FWL	NO. 2	4701'	200' FNL	2355' FWL	200' FSL	2304' FWL
6	BOOTH C35-785	40.26045°N	104.51883°W	474' FNL	2470' FWL	NO. 2	4700'	200' FSL	350' FWL	2440' FSL	350' FWL
7	BOOTH C35-775	40.26045°N	104.51875°W	474' FNL	2493' FWL	NO. 2	4700'	200' FSL	1002' FWL	2439' FSL	1005' FWL
8	BOOTH C35-765	40.26045°N	104.51867°W	474' FNL	2515' FWL	NO. 2	4700'	200' FSL	1653' FWL	2437' FSL	1661' FWL
9	BOOTH C35-755	40.26045°N	104.51859°W	474' FNL	2538' FWL	NO. 2	4699'	200' FSL	2305' FWL	2435' FSL	2316' FWL
10	BOOTH D11-745	40.26095°N	104.51522°W	291' FNL	1783' FEL	NO. 1	4723'	200' FNL	2255' FEL	200' FSL	2304' FEL
11	BOOTH D11-735	40.26095°N	104.51514°W	291' FNL	1760' FEL	NO. 1	4722'	200' FNL	1603' FEL	200' FSL	1653' FEL
12	BOOTH D11-730	40.26095°N	104.51506°W	292' FNL	1738' FEL	NO. 1	4722'	200' FNL	1277' FEL	200' FSL	1327' FEL
13	BOOTH D11-725	40.26094°N	104.51497°W	292' FNL	1715' FEL	NO. 1	4722'	200' FNL	952' FEL	200' FSL	1001' FEL
14	BOOTH D11-715	40.26094°N	104.51489°W	292' FNL	1693' FEL	NO. 1	4721'	200' FNL	350' FEL	200' FSL	350' FEL
15	BOOTH C35-750	40.26054°N	104.51530°W	441' FNL	1806' FEL	NO. 1	4721'	200' FSL	2305' FEL	2433' FSL	2316' FEL
16	BOOTH C35-745	40.26053°N	104.51522°W	441' FNL	1784' FEL	NO. 1	4721'	200' FSL	1653' FEL	2431' FSL	1661' FEL
17	BOOTH C35-735	40.26053°N	104.51514°W	441' FNL	1761' FEL	NO. 1	4722'	200' FSL	1002' FEL	2429' FSL	1005' FEL
18	BOOTH C35-725	40.26053°N	104.51506°W	442' FNL	1739' FEL	NO. 1	4722'	200' FSL	350' FEL	2428' FSL	350' FEL



FIELD DATE:  
09-26-18

DRAWN BY:  
JW

DRAWING DATE:  
08-19-20

CHECKED BY:  
IJM

SURFACE LOCATION:  
SEC. 2, T3N, R64W, 6TH P.M.  
WELD COUNTY, COLORADO

PUBLICLY AVAILABLE DATA SOURCES HAVE NOT BEEN INDEPENDENTLY VERIFIED BY ASCENT.

