

Inspection Photos

API# 081-06583

Operator: GRMR

Insp#: 692402489

Insp Date: 8/27/2020



Photo#1:

View of North end of Location. Insert is of gravel remaining on site.

August 27, 2020



Photo#2:

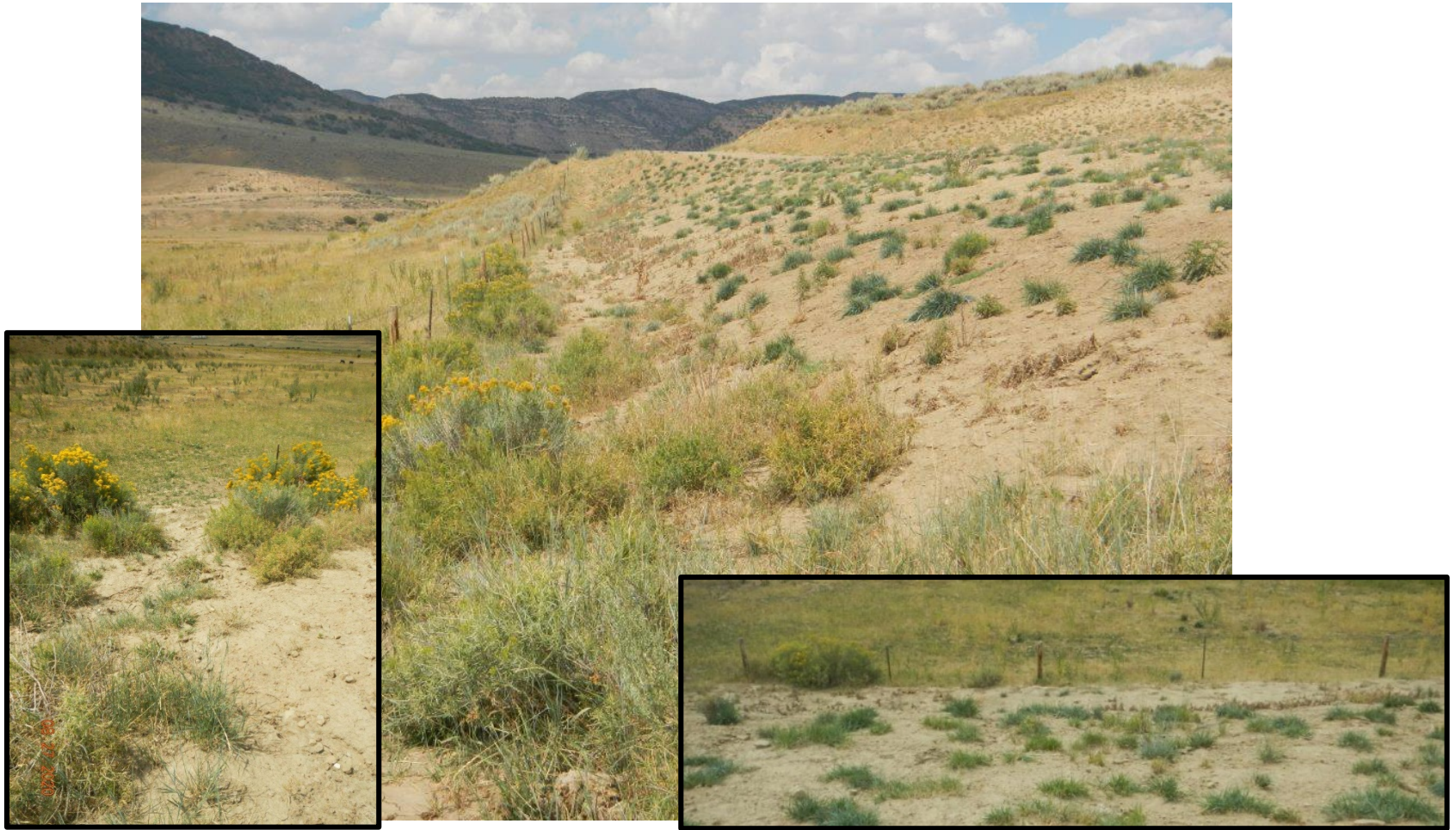
View of Location to South. Insert of sedimentation at base of what was cut slope.

August 27, 2020



COLORADO
Oil & Gas Conservation
Commission
Department of Natural Resources

Inspection Photos: GRMR PA-Durham Ranches API #081-06583



Photo#3:

Fill slope of lease road running on West side of Location. Inserts showing sedimentation at base of slope.

August 27, 2020



COLORADO
Oil & Gas Conservation
Commission
Department of Natural Resources

Inspection Photos: GRMR PA-Durham Ranches API #081-06583



Photo#4:
Eroding Fill slope of lease road on West side of Location.



Photo#5:
Eroding Fill slope of lease road on West side of Location

August 27, 2020



COLORADO
Oil & Gas Conservation
Commission
Department of Natural Resources

Inspection Photos: GRMR PA-Durham Ranches API #081-06583



Photo#6:
Mullein and Canada thistle on fill slope.



Photo#7:
Mullein and Canada thistle on fill slope.

August 27, 2020