

*The Road to Excellence Starts with Safety*

Sold To #: 366960	Ship To #: 3276747	Quote #: 0021910411	Sales Order #: 0901761236
Customer: WHITING OIL & GAS CORP - EBUS		Customer Rep: WHITING	
Well Name: HORSETAIL	Well #: 30F-1942	API/UWI #: 05-123-38740-00	
Field: WILDCAT	City (SAP): RAYMER	County/Parish: WELD	State: COLORADO
Legal Description: SE NW-30-10N-57W-2323FNL-1890FWL			
Contractor: XTREME DRLG		Rig/Platform Name/Num: XTREME 18	
Job BOM: 7523			
Well Type: HORIZONTAL OIL		Liner Cement	
Sales Person: HALAMERICA\HX46524		Srvc Supervisor: Vaughn Oteri	
Job			

Formation Name			
Formation Depth (MD)	Top		Bottom
Form Type			BHST
Job depth MD	13978ft		Job Depth TVD
Water Depth			Wk Ht Above Floor
Perforation Depth (MD)	From		To

### Well Data

Description	New / Used	Size in	ID in	Weight lbm/ft	Thread	Grade	Top MD ft	Bottom MD ft	Top TVD ft	Bottom TVD ft
Casing		5	4.044	23.2		P-110	0	5000		
Casing		7.625	6.875	29.7	LTC	P-110	0	6064		
Casing		4.5	4	11.6		P-110	5000	13770		
Open Hole Section			6.75				5589	13775		

### Tools and Accessories

Type	Size in	Qty	Make	Depth ft	Type	Size in	Qty	Make
Guide Shoe	4.5				Top Plug	4.5		HES
Float Shoe	4.5			13197	Bottom Plug	4.5		HES
Float Collar	4.5			13149	SSR plug set	4.5		HES
Insert Float	4.5				Plug Container	4.5		HES
Stage Tool	4.5				Centralizers	4.5		HES

### Miscellaneous Materials

Gelling Agt	Conc	Surfactant	Conc	Acid Type	Qty	Conc
Treatment Fld	Conc	Inhibitor	Conc	Sand Type	Size	Qty

### Fluid Data

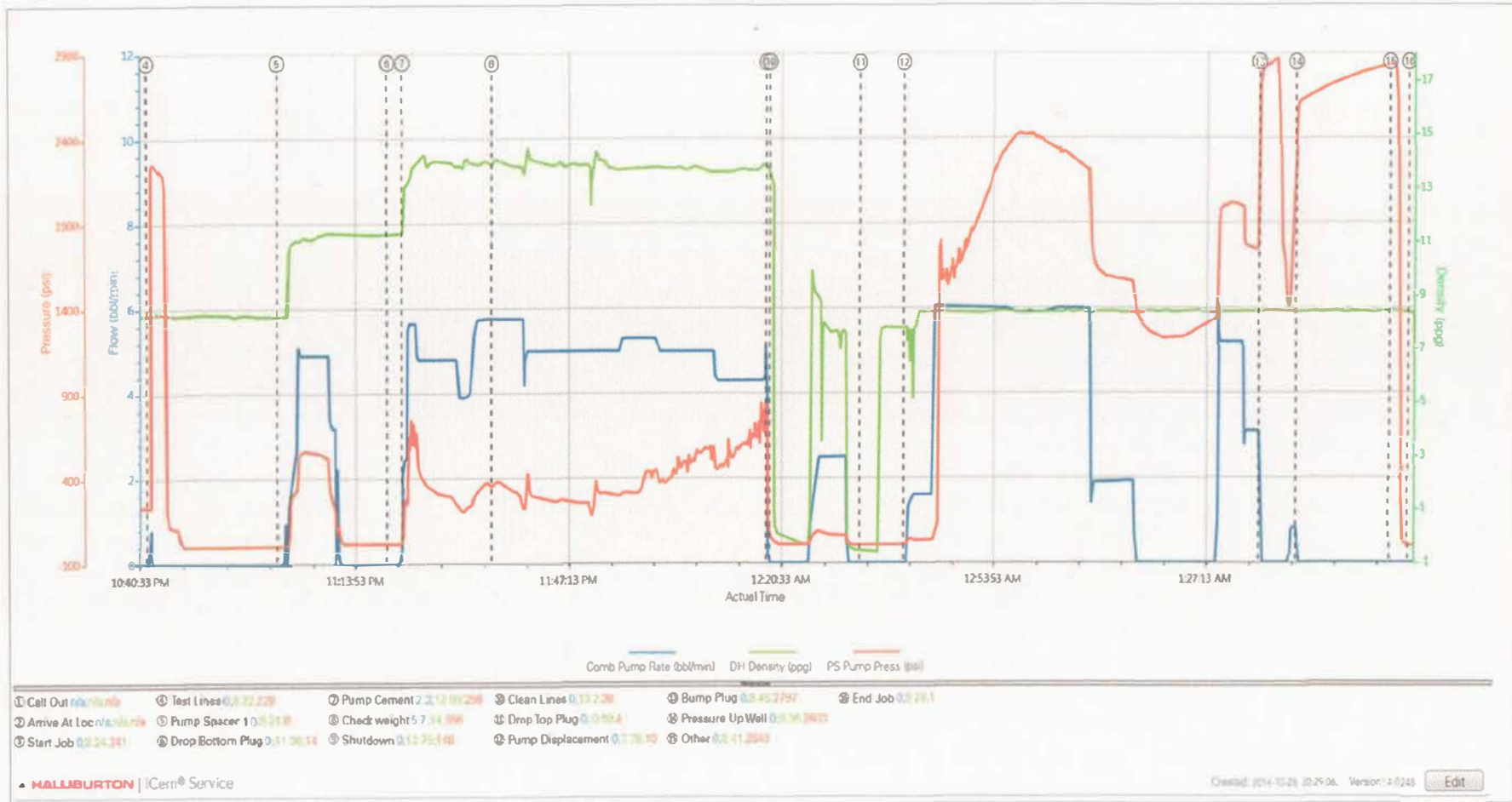
Stage/Plug #: 1

Fluid #	Stage Type	Fluid Name	Qty	Qty UoM	Mixing Density lbm/gal	Yield ft <sup>3</sup> /sack	Mix Fluid Gal	Rate bbl/min	Total Mix Fluid Gal
1	11 lb/gal Tuned Spacer III	Tuned Spacer III	40	bbl	11	4.63	30.4	6	
120.29 lbm/bbl		BARITE, 100 LB SK (100003680)							
30.40 gal/bbl		FRESH WATER							

Fluid #	Stage Type	Fluid Name	Qty	Qty UoM	Mixing Density lbm/gal	Yield ft3/sack	Mix Fluid Gal	Rate bbl/min	Total Mix Fluid Gal
2	Tail Cement	EXPANDACEM (TM) SYSTEM	890	sack	13.8	1.67		6	7.7
7.70 Gal		FRESH WATER							
Fluid #	Stage Type	Fluid Name	Qty	Qty UoM	Mixing Density lbm/gal	Yield ft3/sack	Mix Fluid Gal	Rate bbl/min	Total Mix Fluid Gal
3	Displacement	Displacement	205	bbl	8.33			6	
Cement Left In Pipe		Amount	42 ft		Reason		Shoe Joint		
Comment TOC 4200 TOS 2349 ONLY PUMPED 846SKS OF CEMENT									

## 4.0 Attachments

### 4.1 Case 1-Custom Results.png



## 5.0 Custom Graphs

### 5.1 Custom Graph

