



# Sector Bond Gamma Ray Collar Correlation Log

Company Bohler Well Service LLC					
Well CANNON 3-24					
Field Wattenberg					
County Weld					
State Colorado					
<b>Location:</b>		API # : 05-121-09996		Other Services	
SEC 24 TWP 2N RGE 49W		CNE			
Permanent Datum	Ground Level	Elevation	4186	Elevation	
Log Measured From	Kelly Bushing			K.B. D.F.	
Drilling Measured From	Kelly Bushing			G.L. 4186	
Date	15 July 2020				
Run Number	One				
Depth Driller	3940				
Depth Logger	3602				
Bottom Logged Interval	3600				
Top Log Interval	Surface				
Casing Size	5 1/2				
Type Fluid	Water				
Max. Recorded Temp.	Not Recorded				
Estimated Cement Top	---				
Time Well Ready	ROA				
Time Logger on Bottom	10:00				
Unit Number	200100				
Tool Size/D Number	2.75 Probe				
Location	Fort Lupton				
Recorded By	Scott Erb				
Witnessed By	George Jackson				
Borehole Record		Tubing Record			
Run Number	Bit	From	To	Size	Weight
					From To
Casing Record	Size	Mgd/Ft	Top	Bottom	
Surface String	8 5/8	15.5	Surface	416	
Prot. String					
Production String	5 1/2	15.5	Surface	Total Depth	
Liner					

<<< Fold Here >>>

All interpretations are opinions based on inferences from electrical or other measurements and we cannot and do not guarantee the accuracy or correctness of any interpretation, and we shall not, except in the case of gross or willful negligence on our part, be liable or responsible for any loss, costs, damages, or expenses incurred or sustained by anyone resulting from any interpretation made by any of our officers, agents or employees. These interpretations are also subject to our general terms and conditions set out in our current Price Schedule.

### Comments

**No log available for correlation**

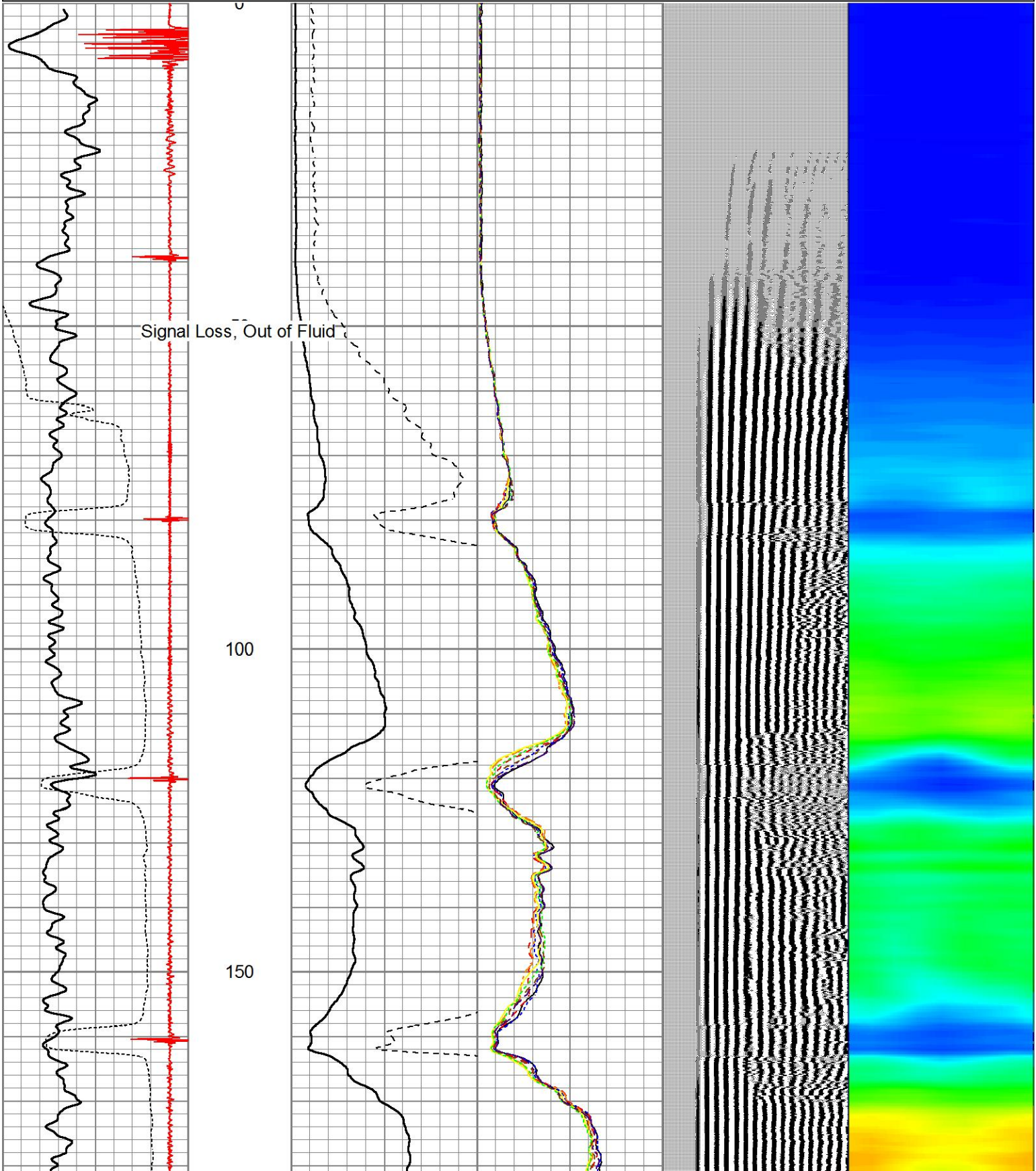
Database File	cannon 3-24.db
Dataset Pathname	pass9
Presentation Format	zwag
Dataset Creation	Wed Jul 15 10:01:44 2020
Charted by	Depth in Feet scaled 1:240

10	CCL	-1.1
0	GR (GAPI)	150
340	TT3 (usec)	240

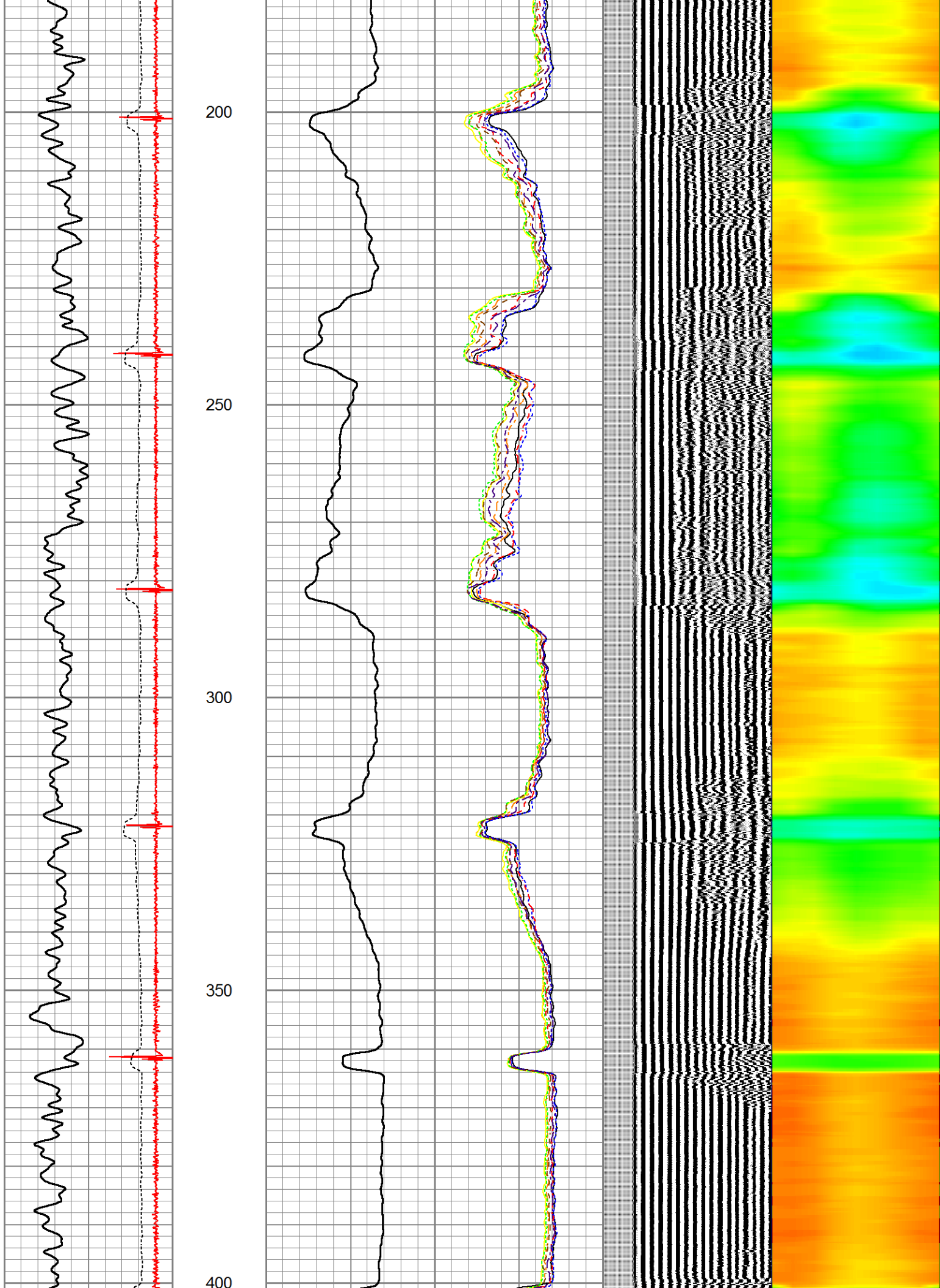
0	AMP (mV)	100
AMPLIFIED AMP3		
0	(mV)	20

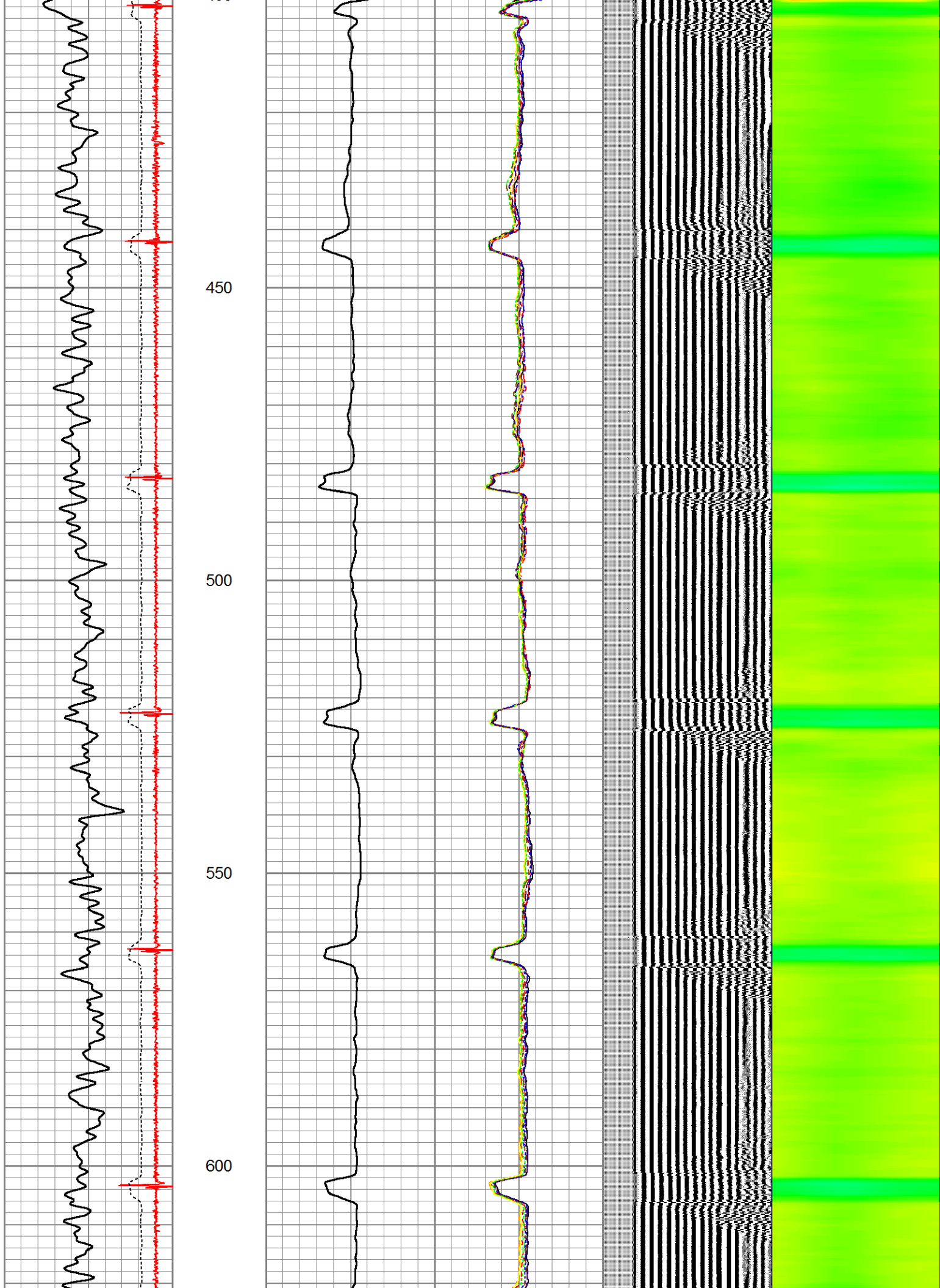
0	AMPS1	100
0	AMPS2	100
0	AMPS3	100
0	AMPS4	100
0	AMPS5	100
0	AMPS6	100
0	AMPS7	100
0	AMPS8	100

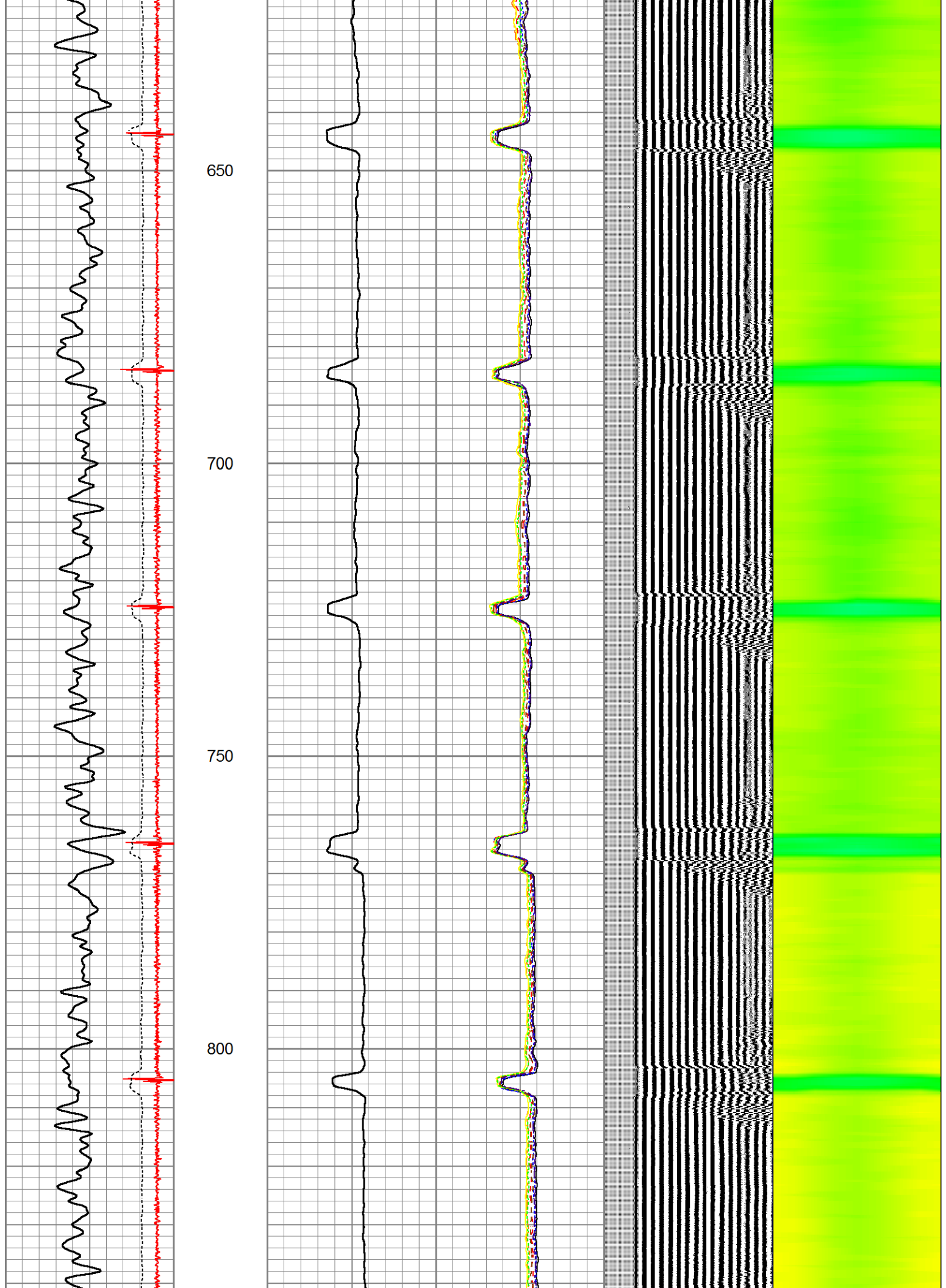
200	VDL	1200
-----	-----	------



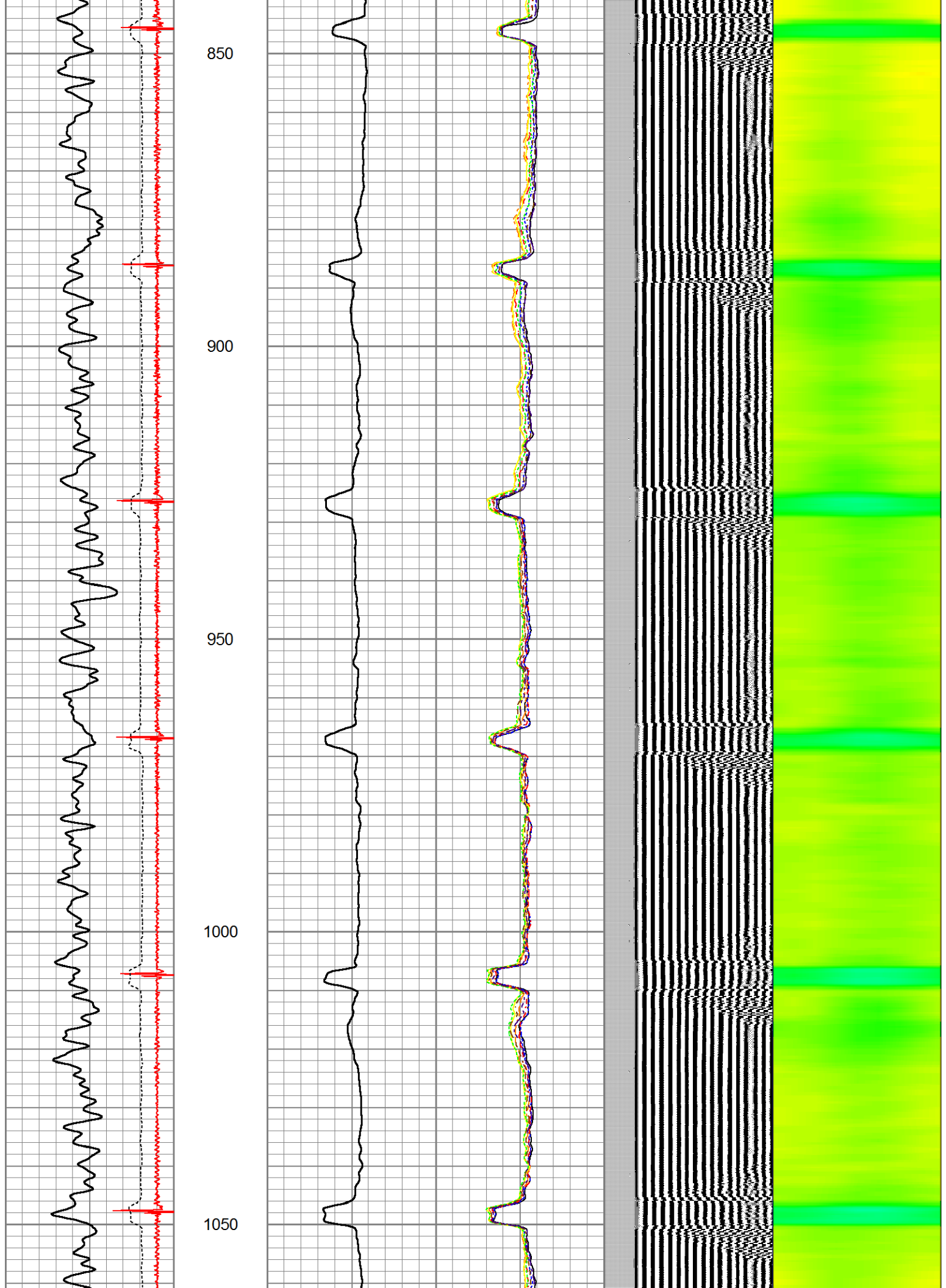


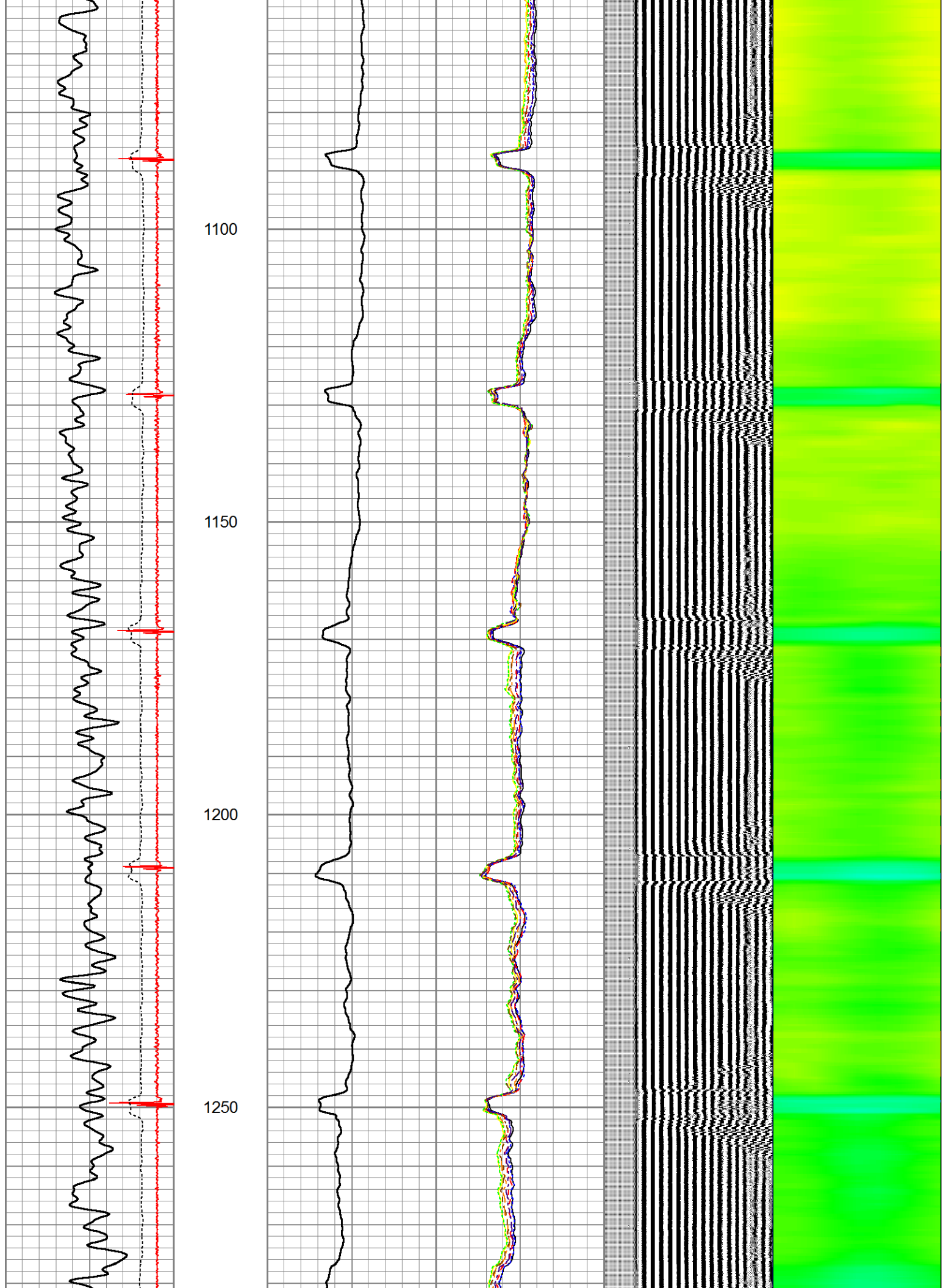


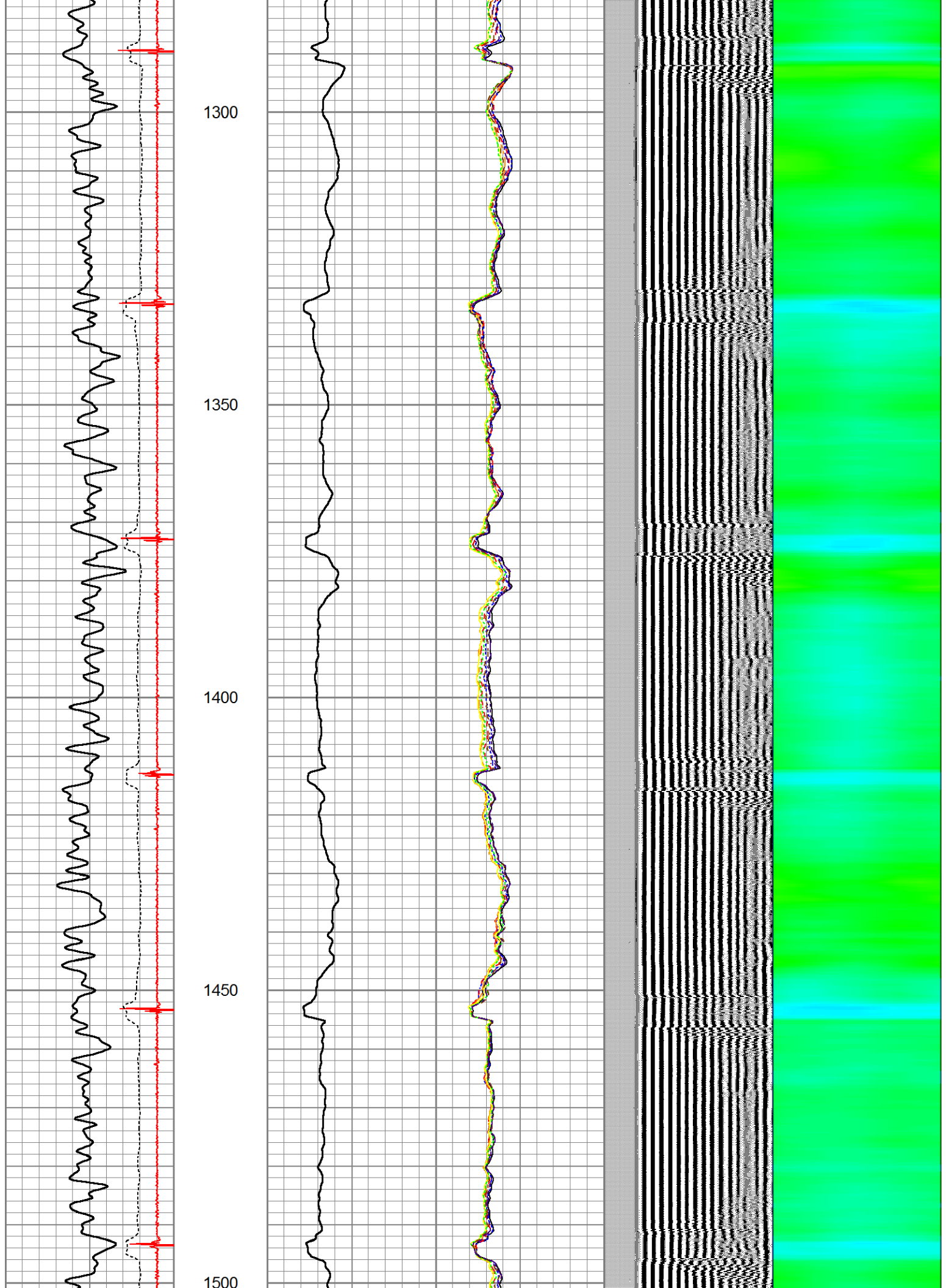




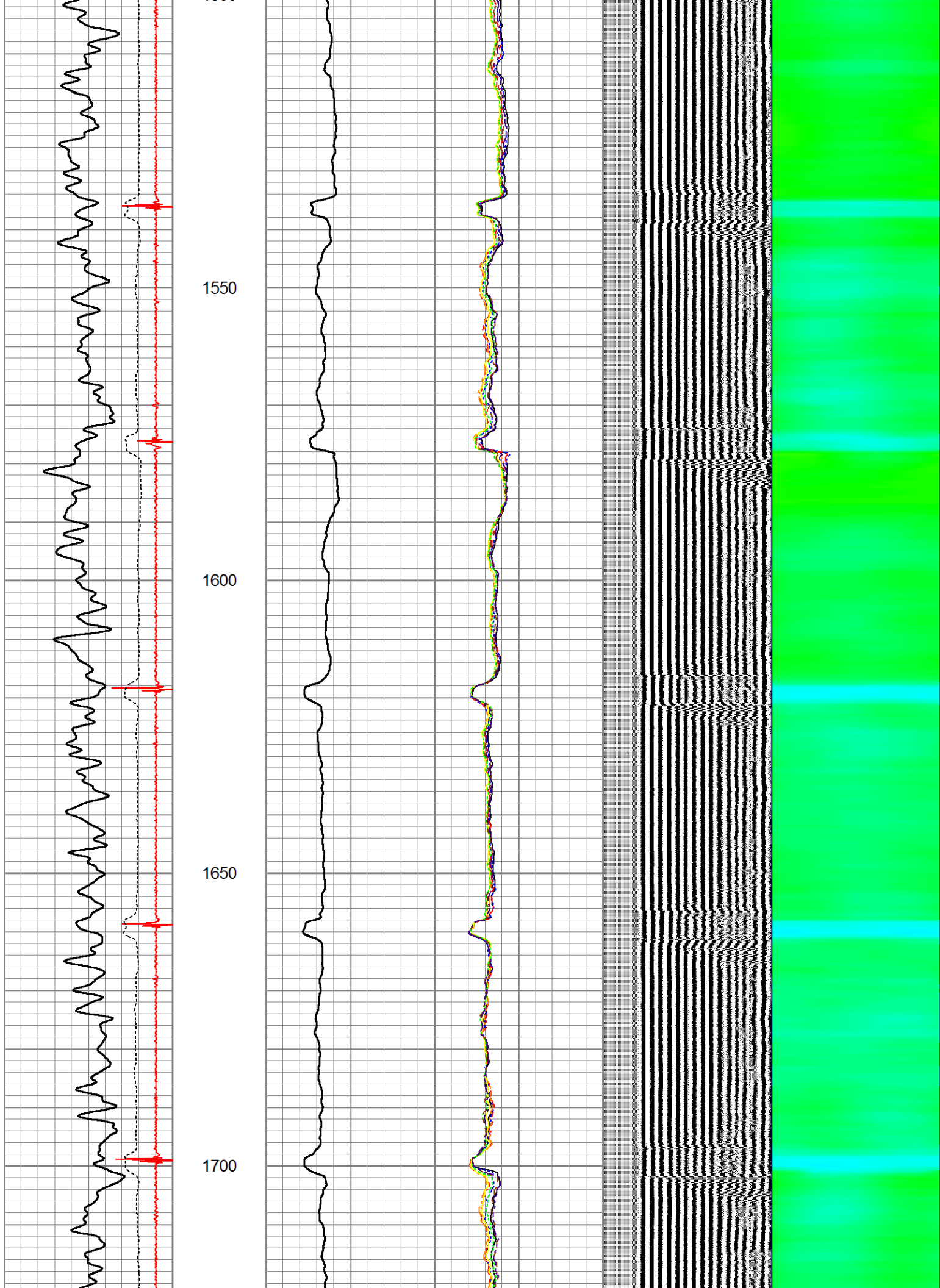


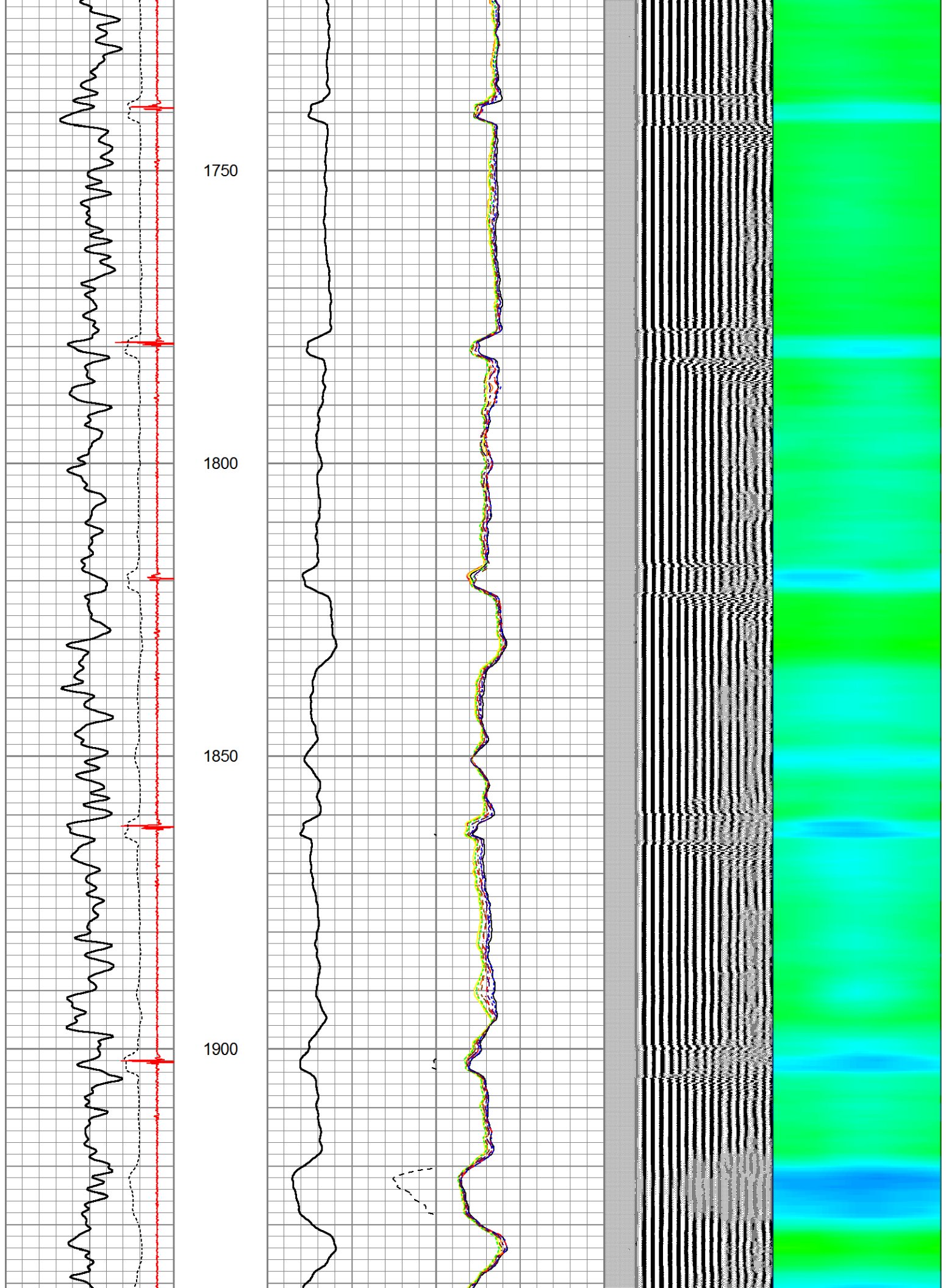


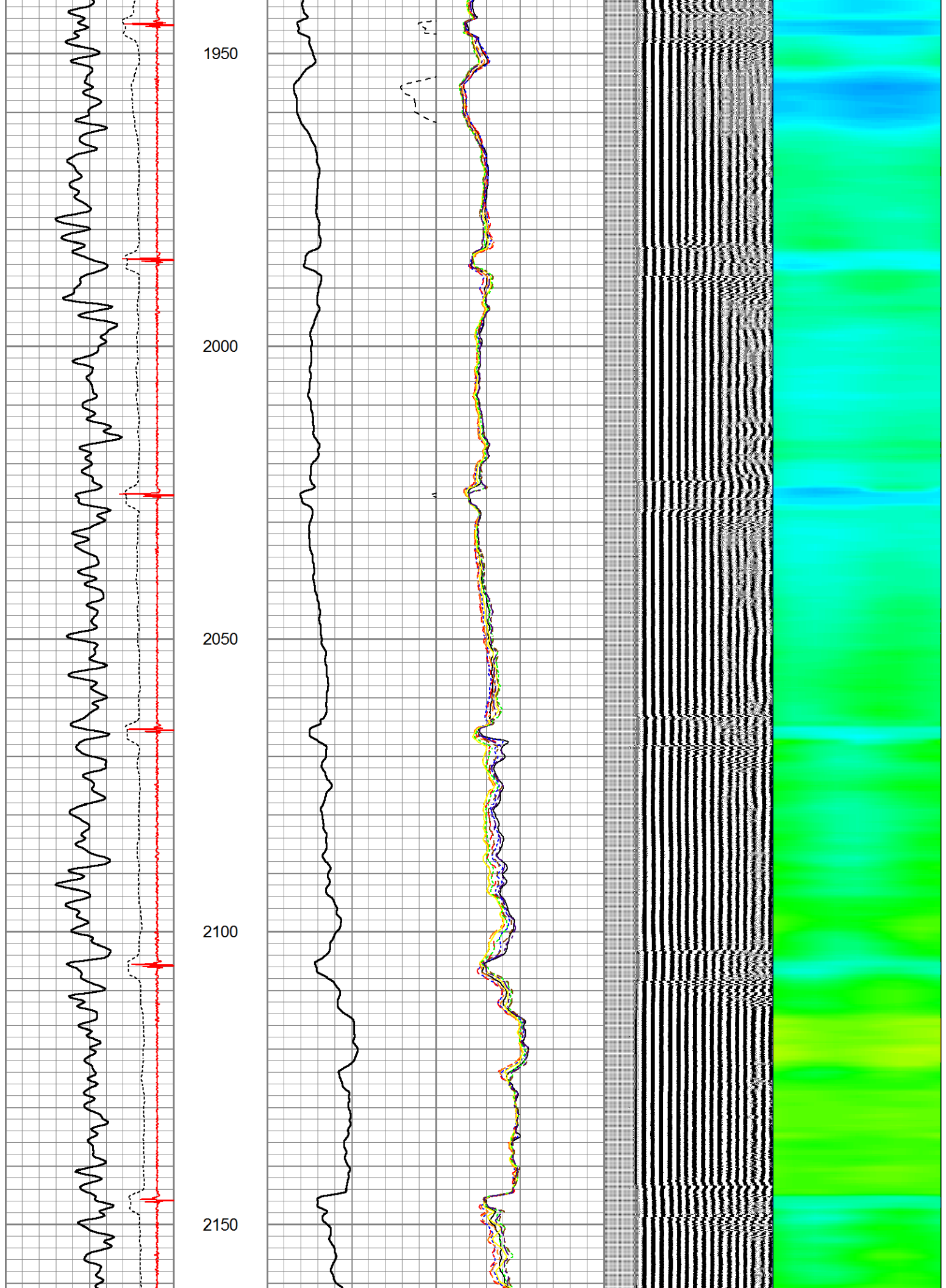




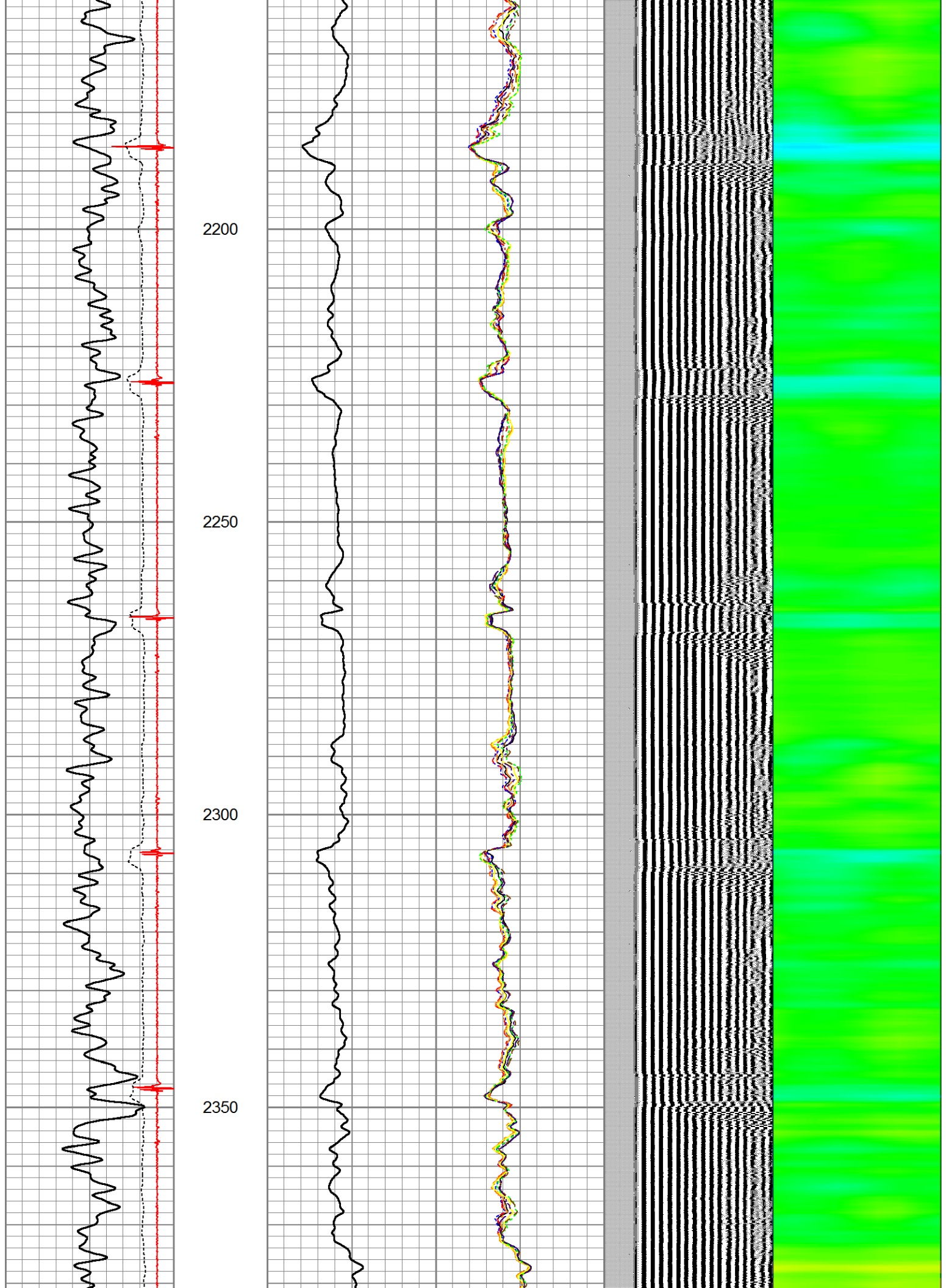


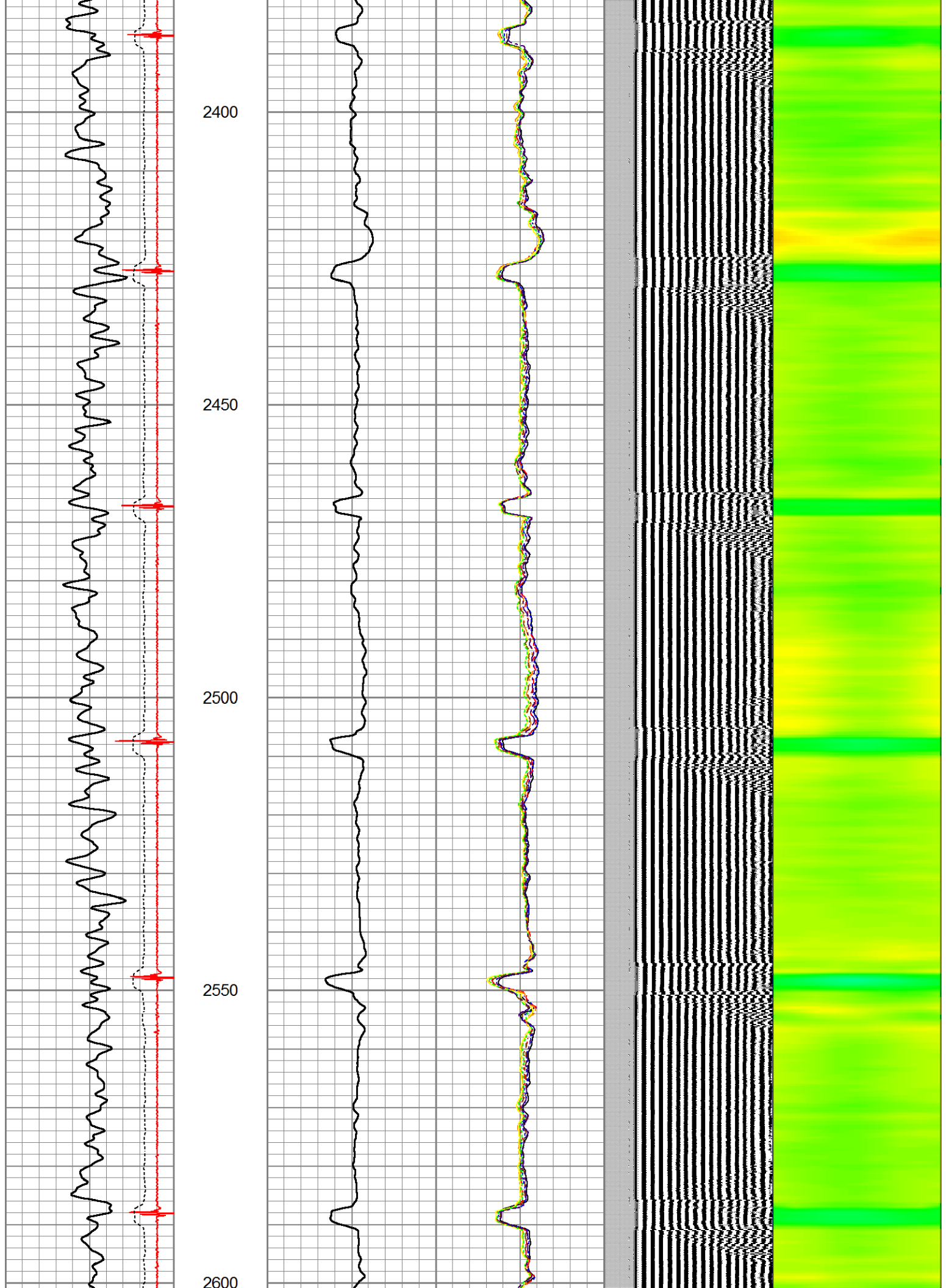


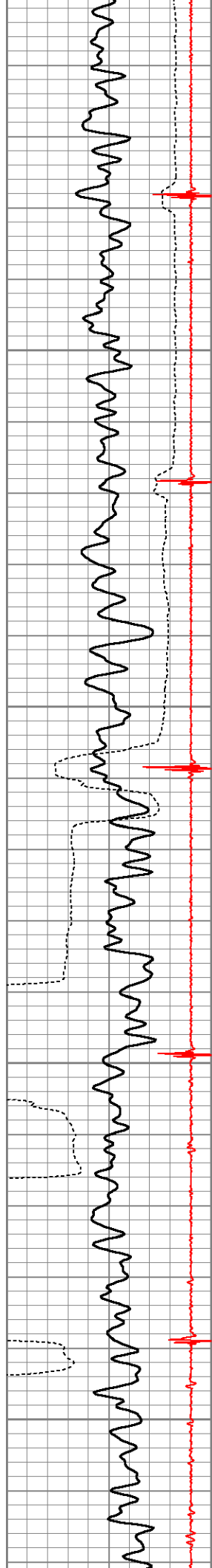










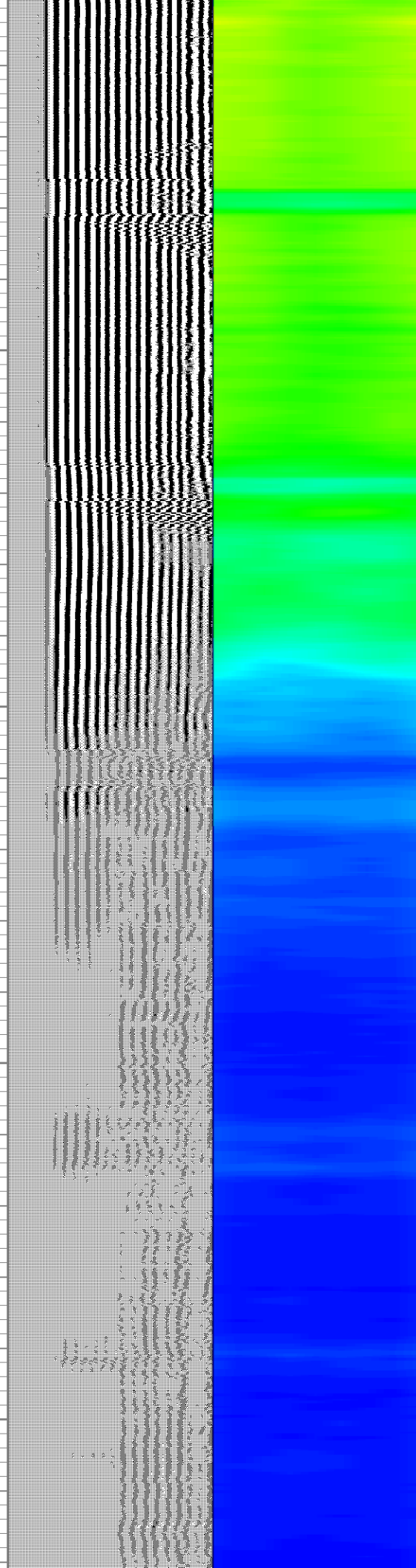
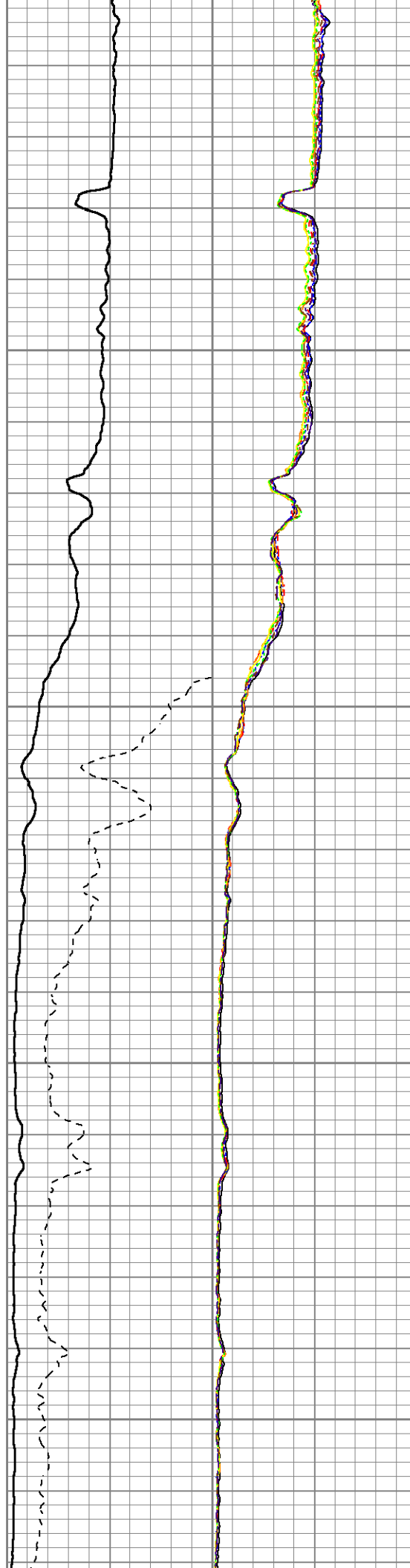


2650

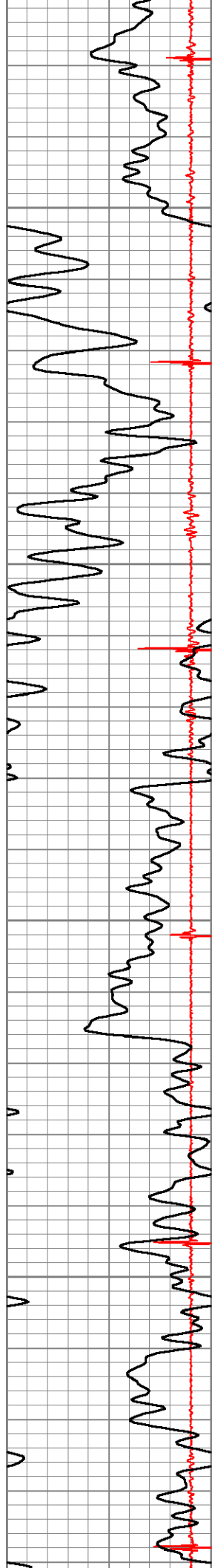
2700

2750

2800





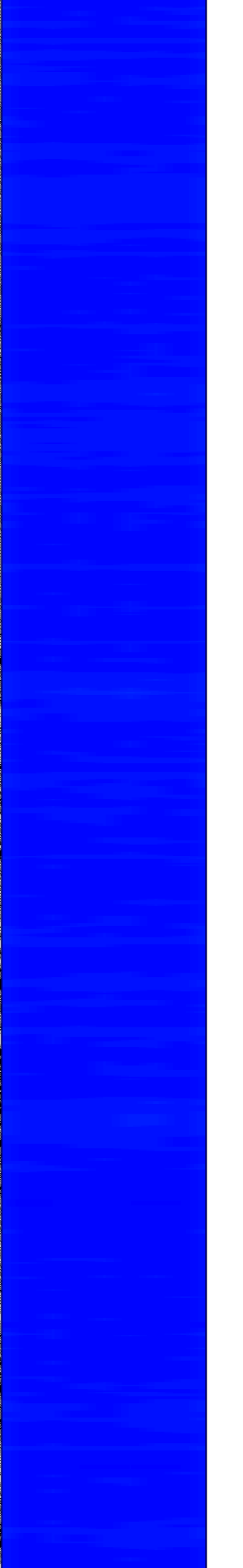
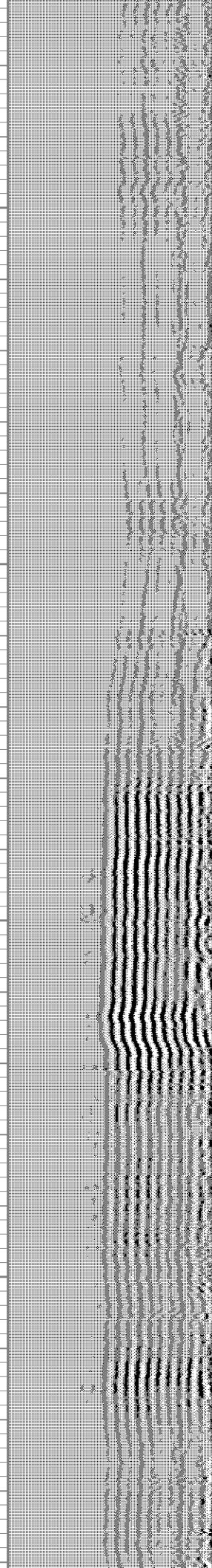
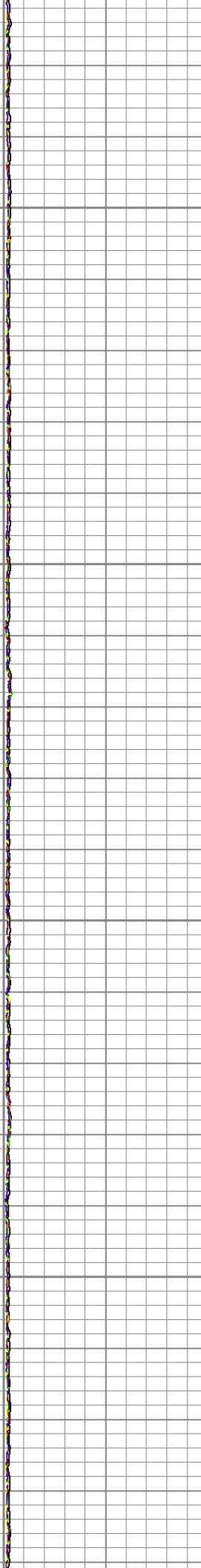
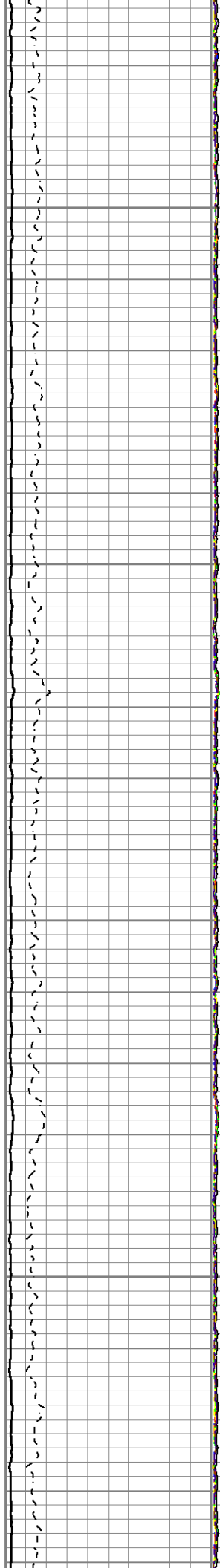


2850

2900

2950

3000





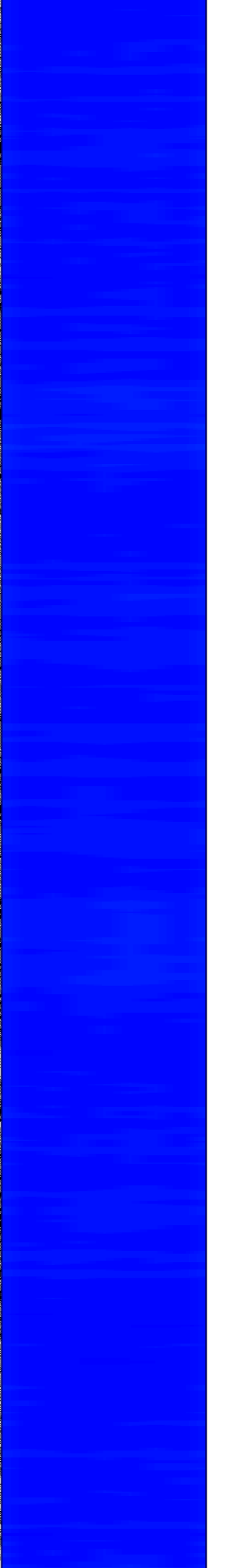
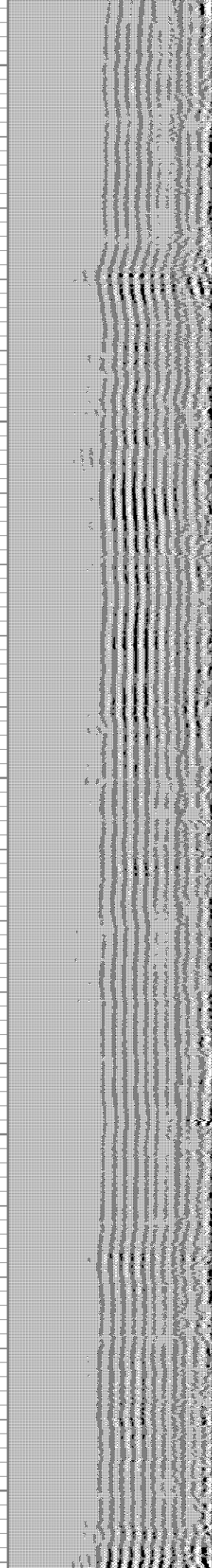
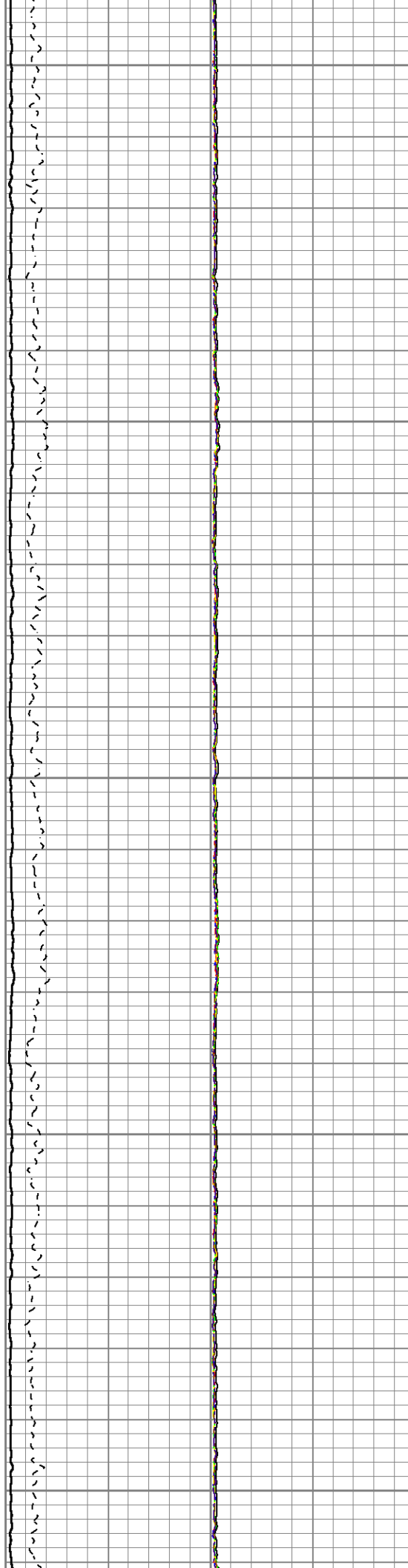
3050

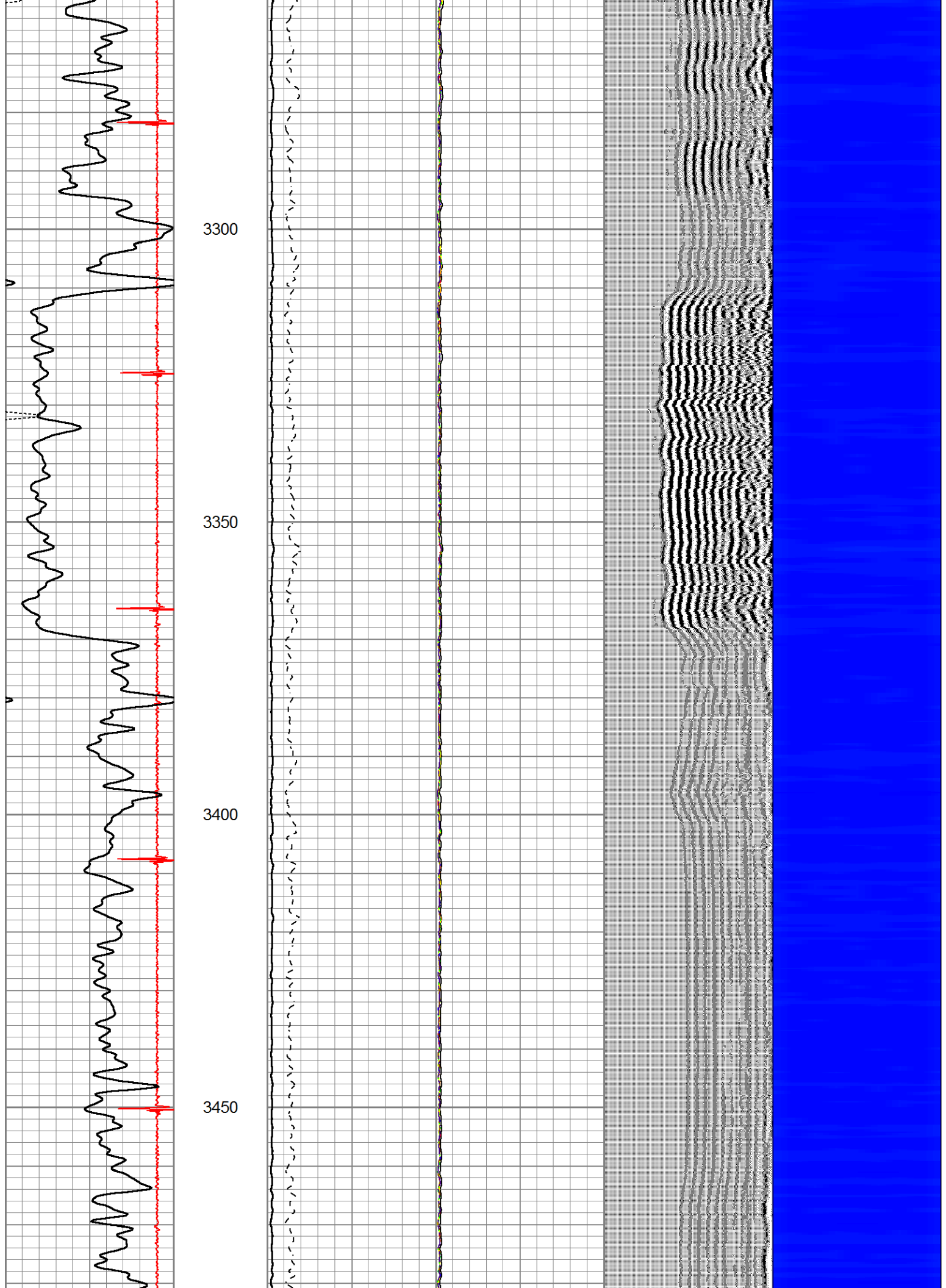
3100

3150

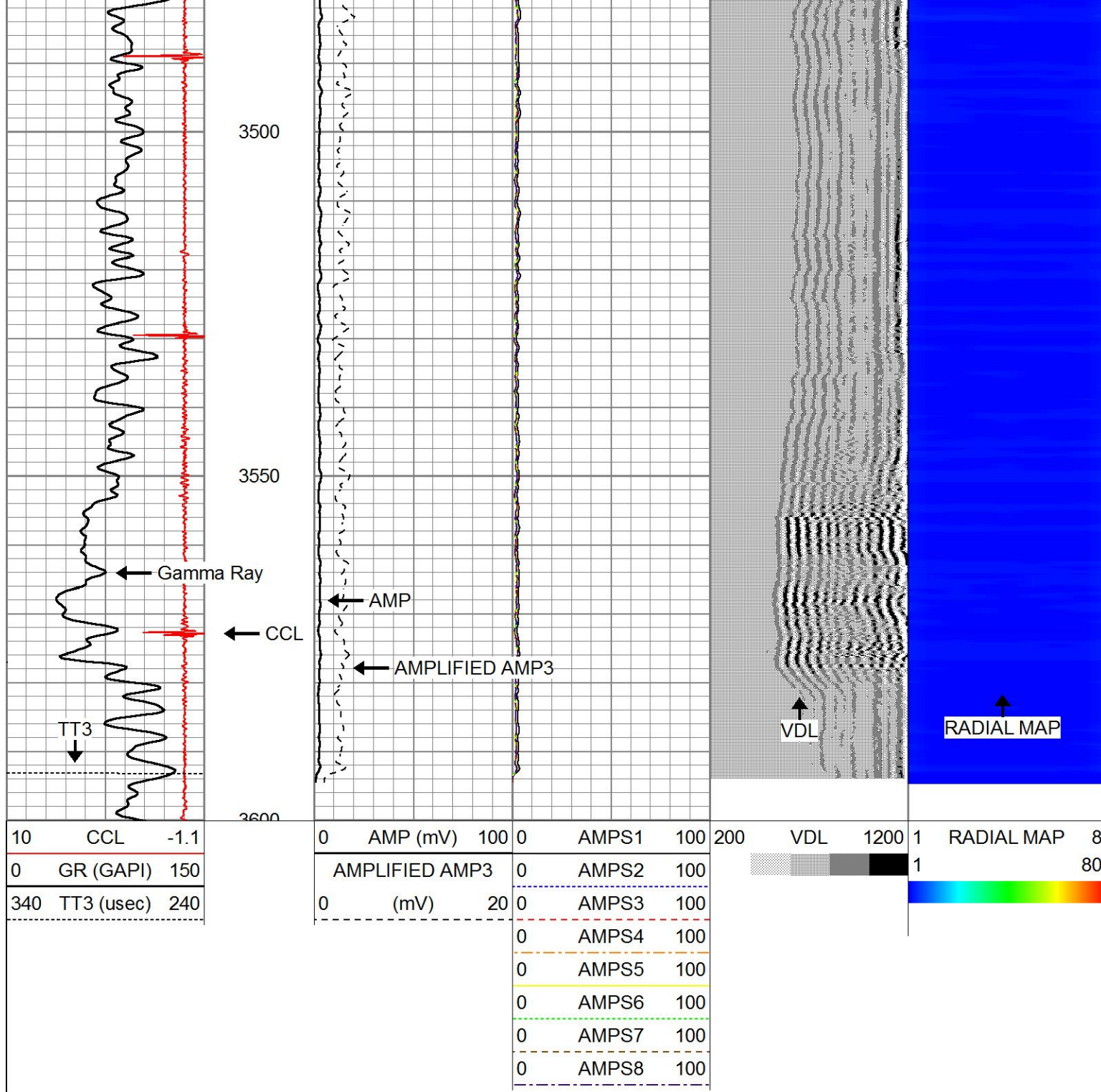
3200

3250









### Calibration Report

Database File cannon 3-24.db  
 Dataset Pathname pass9  
 Dataset Creation Wed Jul 15 10:01:44 2020

### Gamma Ray Calibration Report

Type / Serial: Probe275dig / 101010

#### SHOP CALIBRATION

Wed Feb 27 07:52:48 2013

	Counts/Sec.	Gain	Offset	Jig	Units
Background	0.0				cps
Calibrator	1.0				cps
		0.6500			GAPI/cps

#### PRIMARY VERIFICATION

Background	0.0		cps
Calibrator	0.0		cps
Difference		0.0	GAPI

BEFORE SURVEY VERIFICATION

Background	0.0		cps
Calibrator	0.0		cps
Difference		0.0	GAPI

AFTER SURVEY VERIFICATION

Background	0.0		cps
Calibrator	0.0		cps
Difference		0.0	GAPI

Segmented Cement Bond Log Calibration Report

Serial Number:	101020	
Tool Model:	Probe	
Calibration Casing Diameter:	5.500	in
Calibration Depth:	25.392	ft

Master Calibration, performed Fri Jun 19 10:35:22 2020:

	Raw (v)		Calibrated (mv)		Results	
	Zero	Cal	Zero	Cal	Gain	Offset
3'	0.000	1.516	1.000	71.921	46.778	1.000
CAL	0.000	1.504				
5'	0.000	1.365	1.000	71.921	51.941	1.000
SUM						
S1	0.000	1.530	0.000	71.921	47.006	0.000
S2	0.000	1.502	0.000	71.921	47.871	0.000
S3	0.000	1.497	0.000	71.921	48.053	0.000
S4	0.000	1.500	0.000	71.921	47.956	0.000
S5	0.000	1.508	0.000	71.921	47.680	0.000
S6	0.000	1.531	0.000	71.921	46.971	0.000
S7	0.000	1.522	0.000	71.921	47.264	0.000
S8	0.000	1.525	0.000	71.921	47.170	0.000

Internal Reference Calibration, performed Tue Feb 12 12:45:01 2013:

	Raw (v)		Calibrated (v)		Results	
	Zero	Cal	Zero	Cal	Gain	Offset
CAL	0.000	0.000	0.000	1.504	1.000	0.000

Air Zero Calibration, performed Thu Feb 21 13:40:31 2013:

	Raw (v)		Calibrated (v)		Results	
	Zero		Zero		Offset	
3'	0.000		0.000			0.000
5'	0.000		0.000			0.000
SUM						
S1	0.000		0.000			0.000
S2	0.000		0.000			0.000
S3	0.000		0.000			0.000
S4	0.000		0.000			0.000
S5	0.000		0.000			0.000

S5	0.000	0.000	0.000
S6	0.000	0.000	0.000
S7	0.000	0.000	0.000
S8	0.000	0.000	0.000