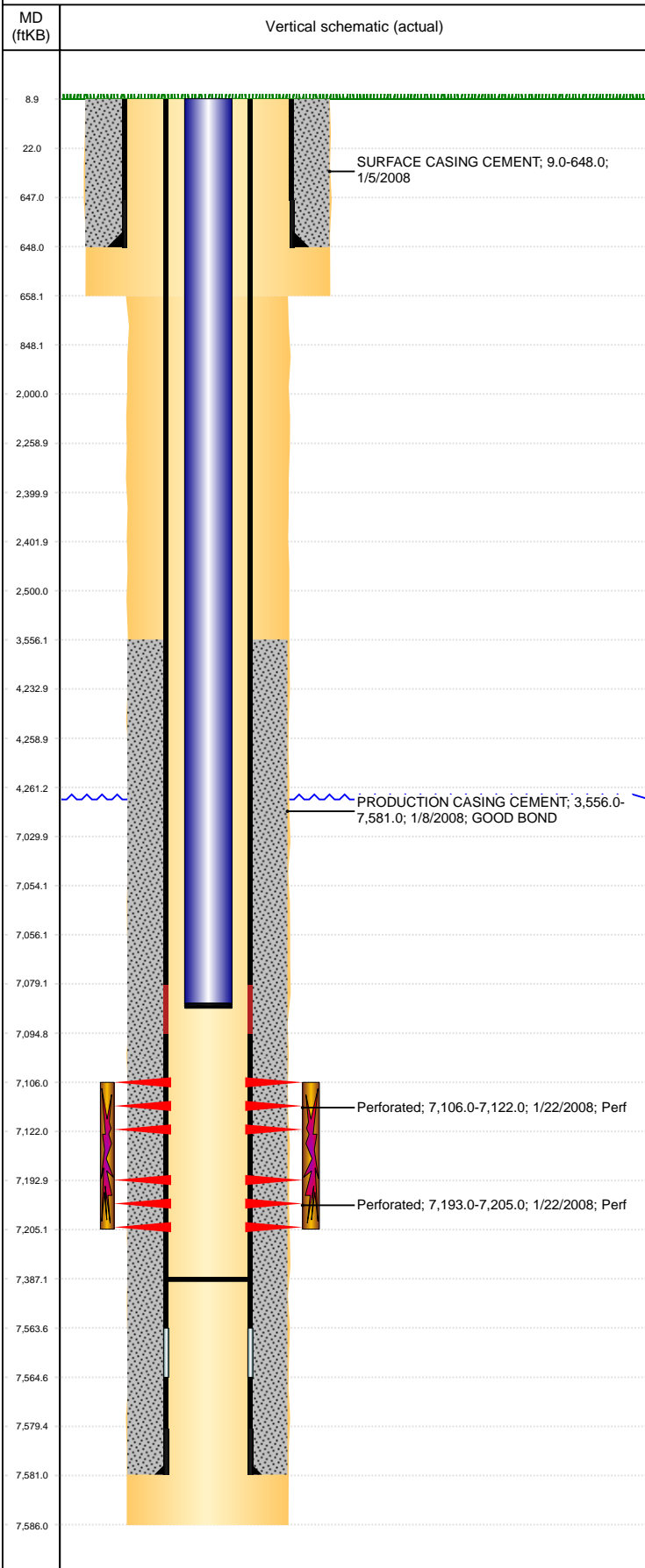


**Well Name: HAMBERT G32-04X**

VERTICAL, ORIGINAL HOLE, 9/2/2020 8:42:05 AM



Well Header										
API 05-123-25293		Business Unit DJ BASIN			District 15		Well Config VERTICAL			
KB - GL / MSL (ft... 9.00		Spud Date 1/5/2008		P & A Date		Well Production Status TA (AT SURFACE)			SoRT No	
Comment Target Depth of 7484' is deeper then Permitted Depth of 7350'. This should not be a problem per Ryan Bruner / Regulatory Dept. 1/3/08. FORM 5 HAS SUR CSG SET DEPTH SCRATCHED OUT BUT THE SCOUT CARD IS CORRECT (648') KB WAS WRONG @ 13, CHANGED TO 9.										
Surface Location (Congressional)										
Qtr 3 NW	Qtr 4 NW	Section 32	Twnshp 4	Twنش... N	Range 65	Rng E/... W	Actual Latitude (°) 40.27380477	Actual Longitude (°) -104.69356476		
Wellbore Sections										
Section Des			Size (in)			Act Top, MD (ftKB)		Act Btm, MD (ftKB)		
SURFACE			12 1/4			9		658		
PRODUCTION			7 7/8			658		7,586		
Casing Strings										
Csg Des			Run Date		OD (in)	Wt/Len (lb/ft)	Grade	Top, MD (ftKB)	MD (ftKB)	
Surface			1/5/2008		8 5/8	24.00	J-55	9.0	648.0	
Production			1/8/2008		4 1/2	11.60	M-80	9.0	7,581.0	
Cement										
Des					Start Date		Top (ftKB)		Btm (ftKB)	
SURFACE CASING CEMENT					1/5/2008		9.0		648.0	
PRODUCTION CASING CEMENT					1/8/2008		3,556.0		7,581.0	
Zone Statuses										
Zone Name		Status Date	Status	Fluid Type	Job				Prod Method	
NIOBRARA		3/11/2010	PR	Water					Flowing	
NIOBRARA		5/9/2017	SI							
Perforation Data										
Linked Zone			Bnch/Stg	Entered Shot Total	Top (ftKB)		Btm (ftKB)		Date	
NIOBRARA, ORIGINAL HOLE				64	7,106.00		7,122.00		1/22/2008	
NIOBRARA, ORIGINAL HOLE				48	7,193.00		7,205.00		1/22/2008	
Stimulation Intervals										
Zone					Start Date		Top (ftKB)		Btm (ftKB)	
NIOBRARA, ORIGINAL HOLE					2/14/2008		7,106.0		7,205.0	
Other In Hole										
Run Date		Des			Make		OD (in)	Top (ftKB)	Btm (ftKB)	
Logs										
Date		Type					Top, MD (ftKB)		Btm, MD (ftKB)	
1/8/2008		Caliper/Comp.Density/Neutron/GR/SP/ML					2,600.0		7,566.0	
1/8/2008		DIL/GR/SP/Caliper					648.0		7,586.0	
1/21/2008		CBL/CCL/GR					3,430.0		7,540.0	
3/22/2018		GYRO					9.0		7,000.0	
Plug Back Total Depths										
Date		Type			Com				Depth (ftKB)	
1/8/2008		PLUG							7,565.0	
5/19/2008		FILL							7,387.0	