

Spud Date: 07/04/2003
 TD: 07/08/2003
 Put on Production: July 2003
 GL: 5,905' KB: 5,917'

Fed 12-2

Wellbore Diagram
 Updated 1 Aug. 2020
 GBR IV

Initial Production: 102 MCFPD, 1184 BTU
 2 BOPD, 38 Gravity
 NA BWPD
 FTP: 50 psig., Csg. Press: 545 psig.

CONDUCTOR CASING

CSG SIZE: 14" .250" Wall, New
 GRADE: NA
 WEIGHT: NA
 LENGTH: 40'
 DEPTH LANDED: 40' GL
 HOLE SIZE: NA
 CEMENT DATA: 4 yds. of Redi-Mix

SURFACE CASING

CSG SIZE: 8 5/8"
 GRADE: J-55 STC
 WEIGHT: 24#/ft
 LENGTH: 305'
 DEPTH LANDED: 303'
 HOLE SIZE: 12 1/4"
 CEMENT DATA: 200 sks Halco Type 3 w/3% NaCl, 1/4 #/sk Polyflake & .2% Versaset. 23 bbl of 14.5 #/gal. slurry.
Cmt. To Surface

PRODUCTION CASING

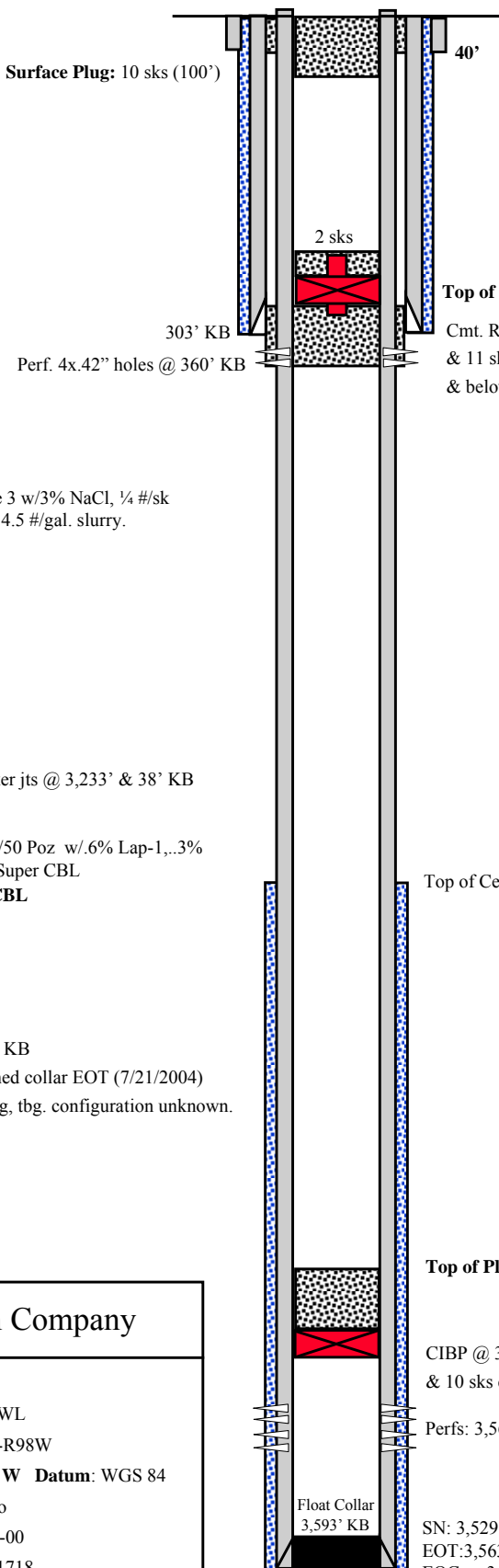
CSG SIZE: 4 1/2" New
 GRADE: J-55 STC
 WEIGHT: 11.6#/ft
 LENGTH: 3,612', 86 jts.
 DEPTH LANDED: 3,607' KB w/Marker jts @ 3,233' & 38' KB
 HOLE SIZE: 7 7/8"
 CEMENT DATA: 290 sks Class G 50/50 Poz w/.6% Lap-1, .3% CFR-3, .2% HR-5, .3% Versaset, .2% Super CBL
CEMENT TOP AT: 2,354' KB per CBL

TUBING

SIZE/GRADE/WT.: 2 3/8" J-55 4.7#/ft
 NO. OF JOINTS: ~110, 3,551'
 DEPTH: 3,563' KB, Landed 12' below KB
 SN: F-Nipple @ 3,529' KB, 1 jt., notched collar EOT (7/21/2004)
 *Note: Well currently has PU for lifting, tbg. configuration unknown.

Logs

Density-Neutron, Dual Induction,
 Gamma Ray, CBL/Collar



WELL COMPLETION

07/15/2003: Frac w/36,593# 16/30 Ottawa sand, 365 bbls. of water, & 170,000 SCF N2, with a cross linked borate fluid system.

PERFORATION RECORD

~07/11/2003: 3,485'-3,501' KB - 9, .45" jet perf. holes

Evertson Production Company

Fed 12-2

932' FSL & 1747' FWL
 SE SW Section 12-T12S-R98W

Lat: 39° 01' 04" N Long: 108° 17' 57" W Datum: WGS 84

Mesa CO, Colorado
 API #: 05-077-08780-00
 BLM Lease # -COC61718
 State Permit#: 20030314

SN: 3,529' KB
 EOT: 3,563' KB
 EOCsg: 3,607' KB (Walck WBD) 3,651' KB (State Compl. Report)
Top of Dakota: ~3,485' KB (Top Perf)