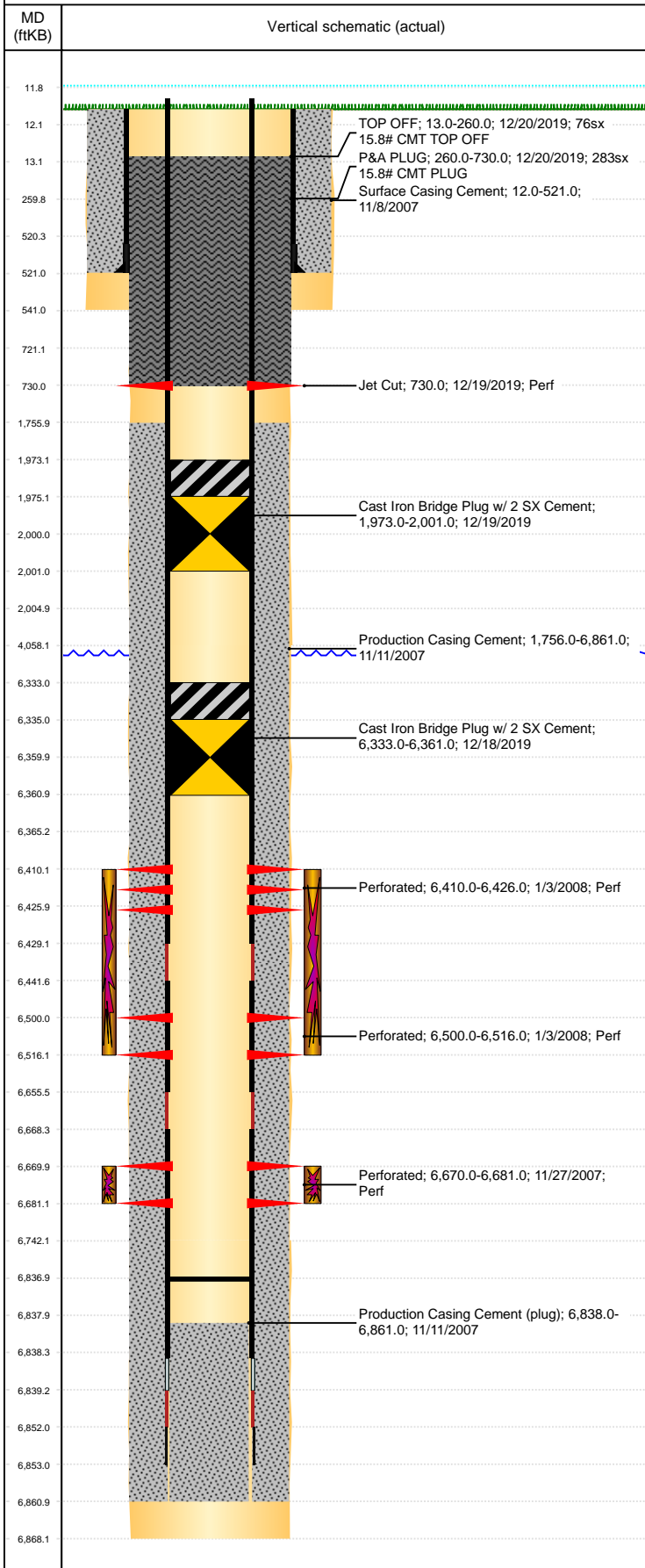


Well Name: WELLS RANCH USX BB03-10

VERTICAL, ORIGINAL HOLE, 9/2/2020 2:40:27 PM



Well Header									
API 05-123-26448		Business Unit DJ BASIN			District 15		Well Config VERTICAL		
KB - GL / MSL (ft... 12.00		Spud Date 11/7/2007		P & A Date 7/16/2020		Well Production Status PA			SoRT Yes
Comment									
Surface Location (Congressional)									
Qtr 3 NW	Qtr 4 SE	Section 3	Twnshp 5	Twnsh... N	Range 63	Rng E/... W	Actual Latitude (°) 40.42668367	Actual Longitude (°) -104.42118356	
Wellbore Sections									
Section Des			Size (in)			Act Top, MD (ftKB)		Act Btm, MD (ftKB)	
SURFACE			12 1/4			12		541	
OPENHOLE			7 7/8			541		4,058	
OPENHOLE			7 7/8			4058		6,742	
OPENHOLE			7 7/8			6742		6,868	
Casing Strings									
Csg Des		Run Date		OD (in)	Wt/Len (lb/ft)	Grade	Top, MD (ftKB)	MD (ftKB)	
Surface		11/7/2007		8 5/8	24.00	J-55	12.0	521.0	
Production		11/10/2007		4 1/2	11.60	M-80	11.9	6,853.0	
Cement									
Des				Start Date		Top (ftKB)		Btm (ftKB)	
Surface Casing Cement				11/8/2007		12.0		521.0	
Production Casing Cement				11/11/2007		1,756.0		6,861.0	
P&A PLUG				12/20/2019		260.0		730.0	
TOP OFF				12/20/2019		13.0		260.0	
Zone Statuses									
Zone Name	Status Date	Status	Fluid Type	Job			Prod Method		
NIOBRARA	1/8/2008	PR	Gas	DRILLING/COMPLETION - ORIGINAL, 11/6/2007...					
NIOBRARA	12/16/2019	P&A	Gas	PLUG AND ABANDON, 12/16/2019 09:00					
CODELL	1/8/2008	PR	Gas	DRILLING/COMPLETION - ORIGINAL, 11/6/2007...					
CODELL	12/16/2019	P&A	Gas	PLUG AND ABANDON, 12/16/2019 09:00					
Perforation Data									
Linked Zone		Bnch/Stg	Entered Shot Total	Top (ftKB)		Btm (ftKB)		Date	
NIOBRARA, ORIGINAL HOLE		A	64	730.00		730.00		12/19/2019	
NIOBRARA, ORIGINAL HOLE		B	64	6,410.00		6,426.00		1/3/2008	
CODELL, ORIGINAL HOLE			44	6,670.00		6,681.00		11/27/2007	
Stimulation Intervals									
Zone			Start Date			Top (ftKB)		Btm (ftKB)	
NIOBRARA, ORIGINAL HOLE			1/3/2008			6,410.0		6,516.0	
CODELL, ORIGINAL HOLE			1/3/2008			6,670.0		6,681.0	
Other In Hole									
Run Date	Des			Make		OD (in)	Top (ftKB)	Btm (ftKB)	
12/18/2019	Cast Iron Bridge Plug w/ 2 SX Cement					3.99	6,333.0	6,361.0	
12/19/2019	Cast Iron Bridge Plug w/ 2 SX Cement					3.99	1,973.0	2,001.0	
Logs									
Date		Type				Top, MD (ftKB)		Btm, MD (ftKB)	
11/10/2007		COMPENSATED DENSITY				521.0		6,841.0	
11/10/2007		INDUCTION				521.0		6,861.0	
11/21/2007		CBL/CCL/GR				1,660.0		6,816.0	
8/5/2016		GYRO				0.0		6,600.0	
Plug Back Total Depths									
Date		Type		Com				Depth (ftKB)	
11/21/2007		FILL		DEPTH LOGGER ON CBL				6,823.0	
2/11/2008		CIFTP		DRILLED CIFTP AND PUSHED TO 6837'				6,837.0	