

Inspection Photos

API#081-07654

Operator: SWN

Insp#: 692402481

Insp Date: 8/26/2020





Photo#1:
View of Location from entry to Southwest.

August 27, 2020



COLORADO
Oil & Gas Conservation
Commission
Department of Natural Resources

Inspection Photos: SWN PA Weber API#081-07654



Photo#2:

Overview of Location from Northwest corner to Southeast.

August 27, 2020



COLORADO
Oil & Gas Conservation
Commission
Department of Natural Resources

Inspection Photos: SWN PA Weber API#081-07654



Photo#3:
View of cut slope straight on, to South.



Photo#4:
View along cut, West to East.

August 27, 2020



Photo#5:
Close up of Cut slope erosion.



Photo#6:
Close up of Cut slope erosion.

August 27, 2020

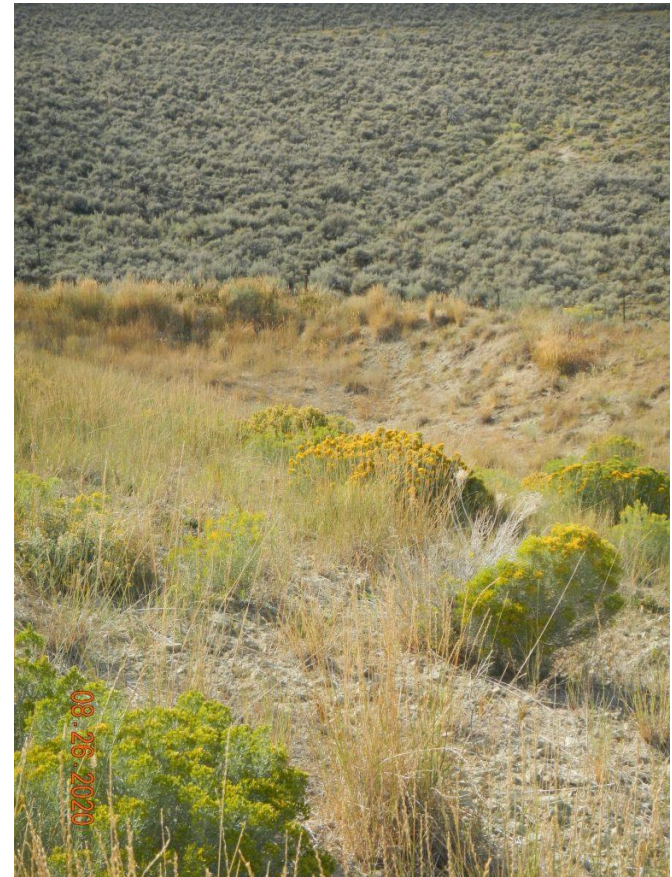


COLORADO
Oil & Gas Conservation
Commission
Department of Natural Resources

Inspection Photos: SWN PA Weber API#081-07654



Photo#7:
View along fill slope.



Photo#8:
View down fill slope to sediment basin.

August 27, 2020



COLORADO
Oil & Gas Conservation
Commission
Department of Natural Resources

Inspection Photos: SWN PA Weber API#081-07654



Photo#9:

View up access road from entry off County road. Arrow indicates high point of route.

August 27, 2020



Photo#10:

Showing steep cut above access road on South side. Inserts of overwhelmed Bmps and sediment movement.

August 27, 2020



Photo#11:

2014 GE Aerial image of Location .

August 27, 2020