



County Weld State Colorado

Drilling Measured From Kelly

| | |
|----------------|--|
| Other Services | |
| CIBPX3 | |
| Dump Bailer X3 | |
| Jet Cut | |
| Elevation | |
| K.B. 4875' | |
| D.F. --- | |
| G.L. 4865' | |

| | |
|--|--------------|
| | 01-SEPT-2020 |
|--|--------------|

| Remote Record | | |
|---------------|------|----|
| Bit | From | To |

| | |
|----|--|
| To | |
|----|--|

To

[illegible]Bottom
607 FT

146761

All interpretations are opinions based on inferences from electrical or other measurements and we cannot and do not guarantee the accuracy or correctness of any interpretation, and we shall not, except in the case of gross or willful negligence on our part, be liable or responsible for any loss, costs, damages, or expenses incurred or sustained by anyone resulting from any interpretation made by any of our officers, agents or employees. These interpretations are also subject to our general terms and conditions set out in our current Price Schedule.

Comments

Log ran as per customer request
Depth referenced to Kelley Bushing of 10 FT
Gauge Ring/Junk Basket ran to 7824 FT
Log ran with 0 PSI Surface Induced Pressure
Logging tools were clean and free of debris upon completion of operations

Thank you for choosing Reliance Oilfield Services, LLC!!

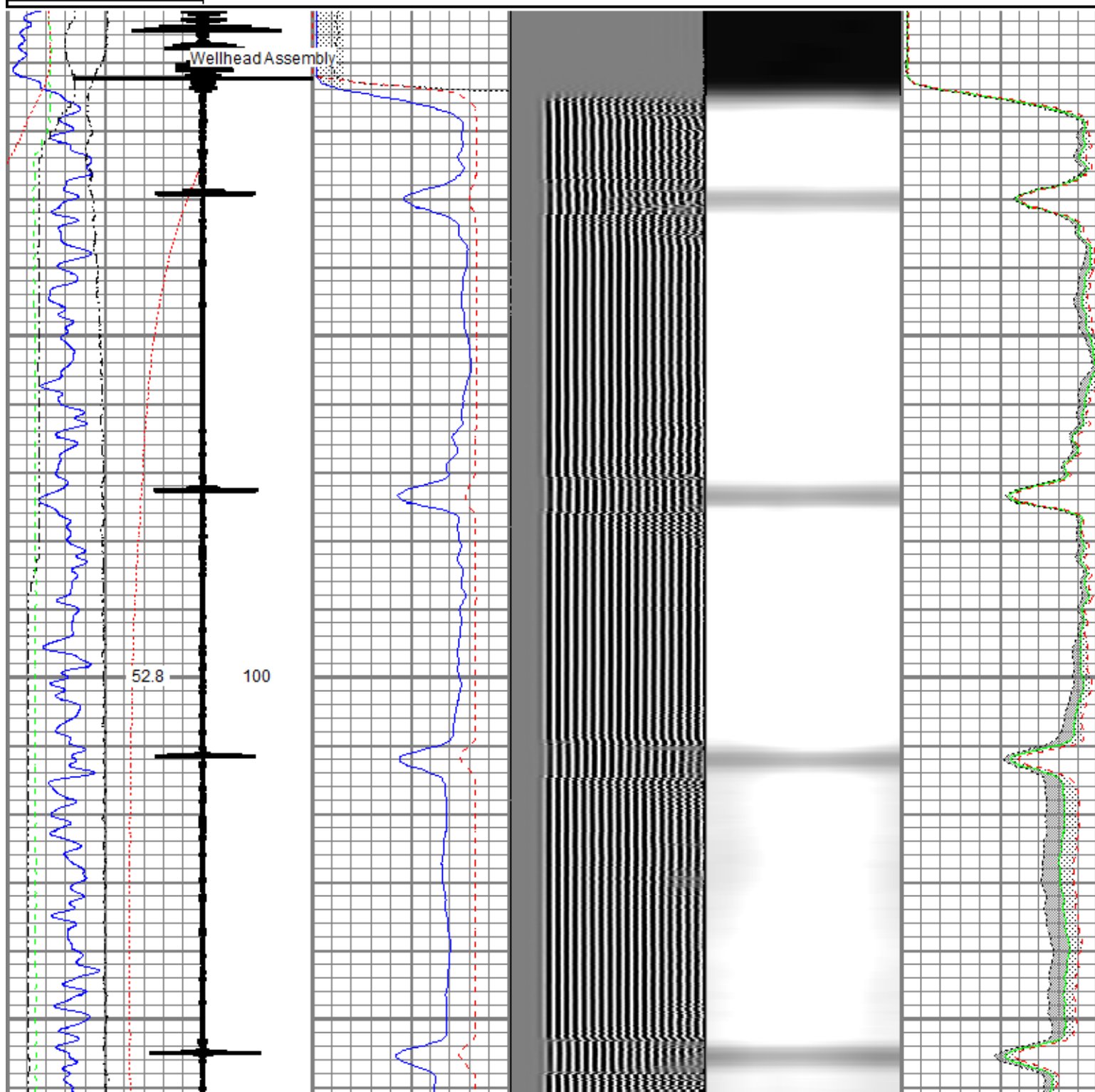
Main Pass

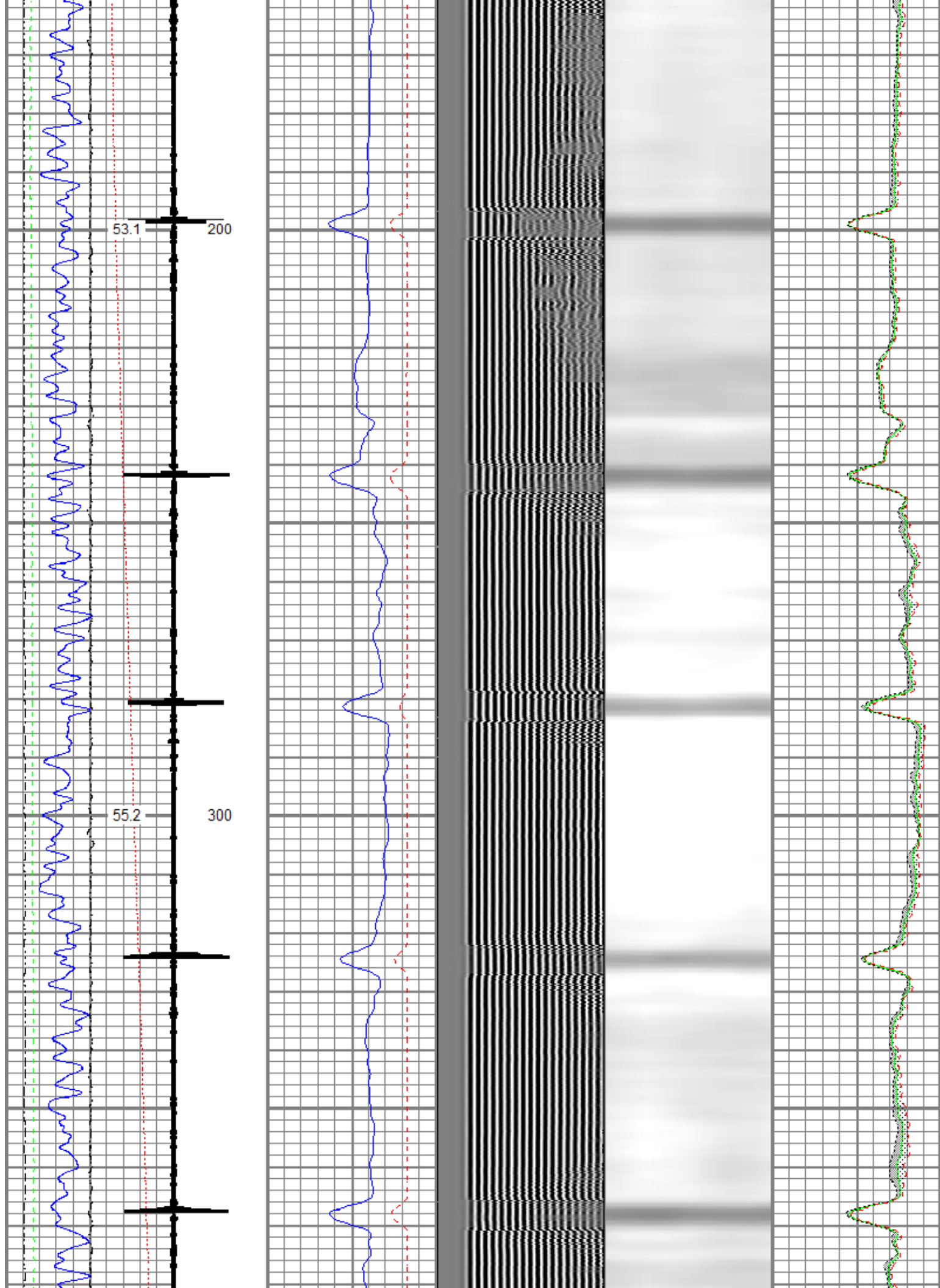
Recorded with 0 PSI Surface Induced Pressure

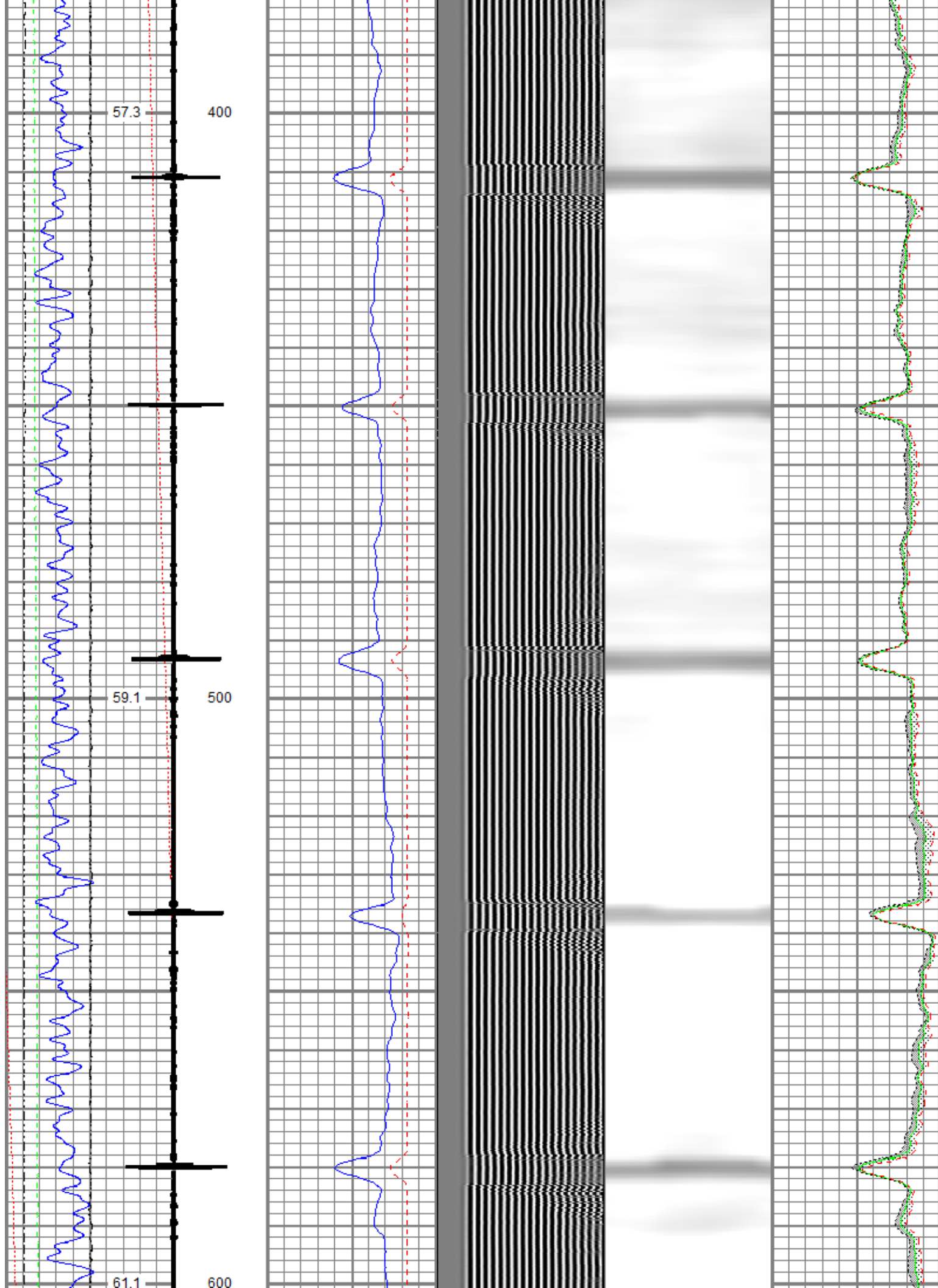


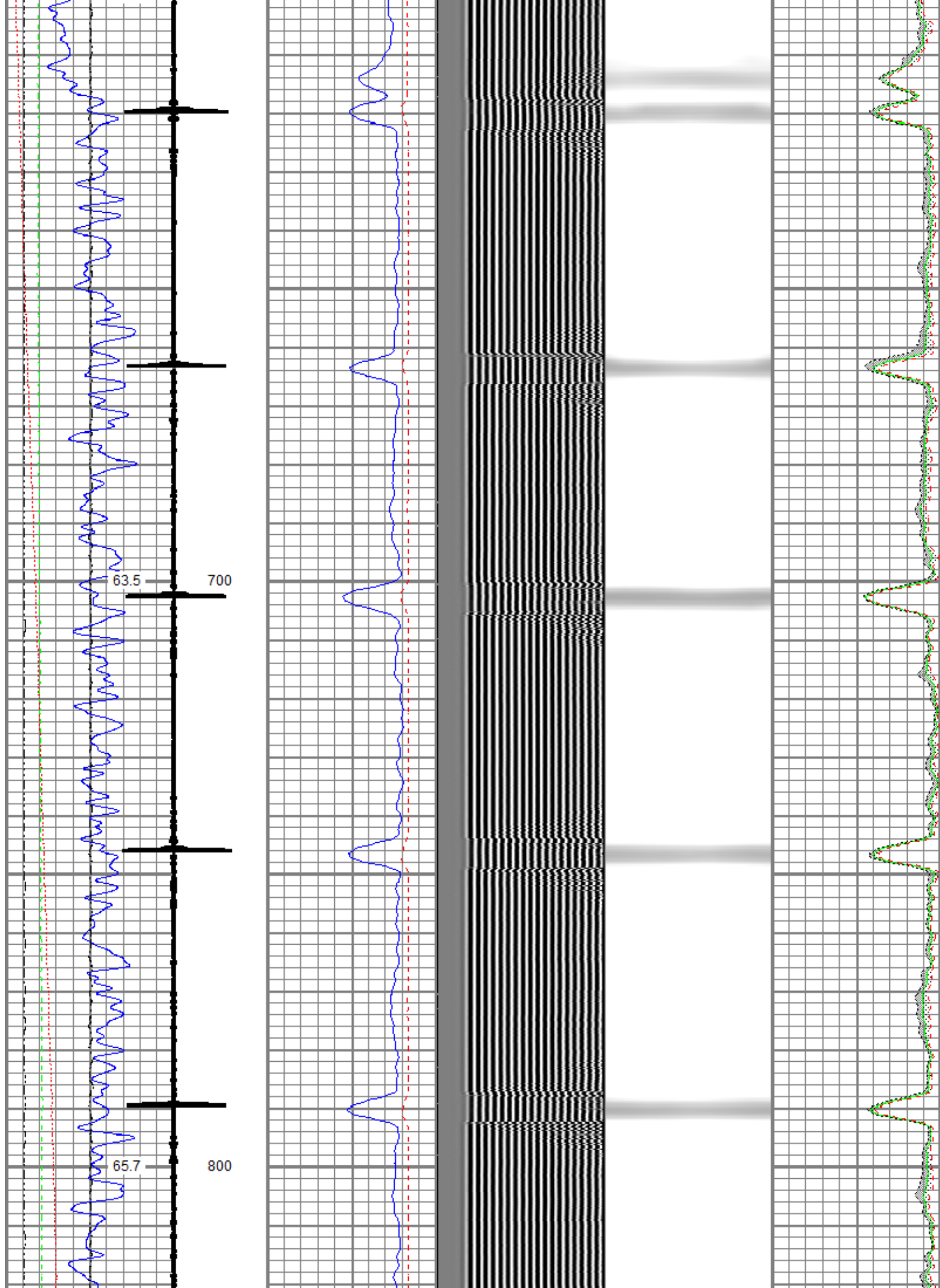
Database File oxy_05123314920000_rbl_09_01_2020.db
 Dataset Pathname Main/pass3.1
 Presentation Format ros_radli_oxv_vert_gobo_45
 Dataset Creation Tue Sep 01 12:58:56 2020
 Charted by Depth in Feet scaled 1:240

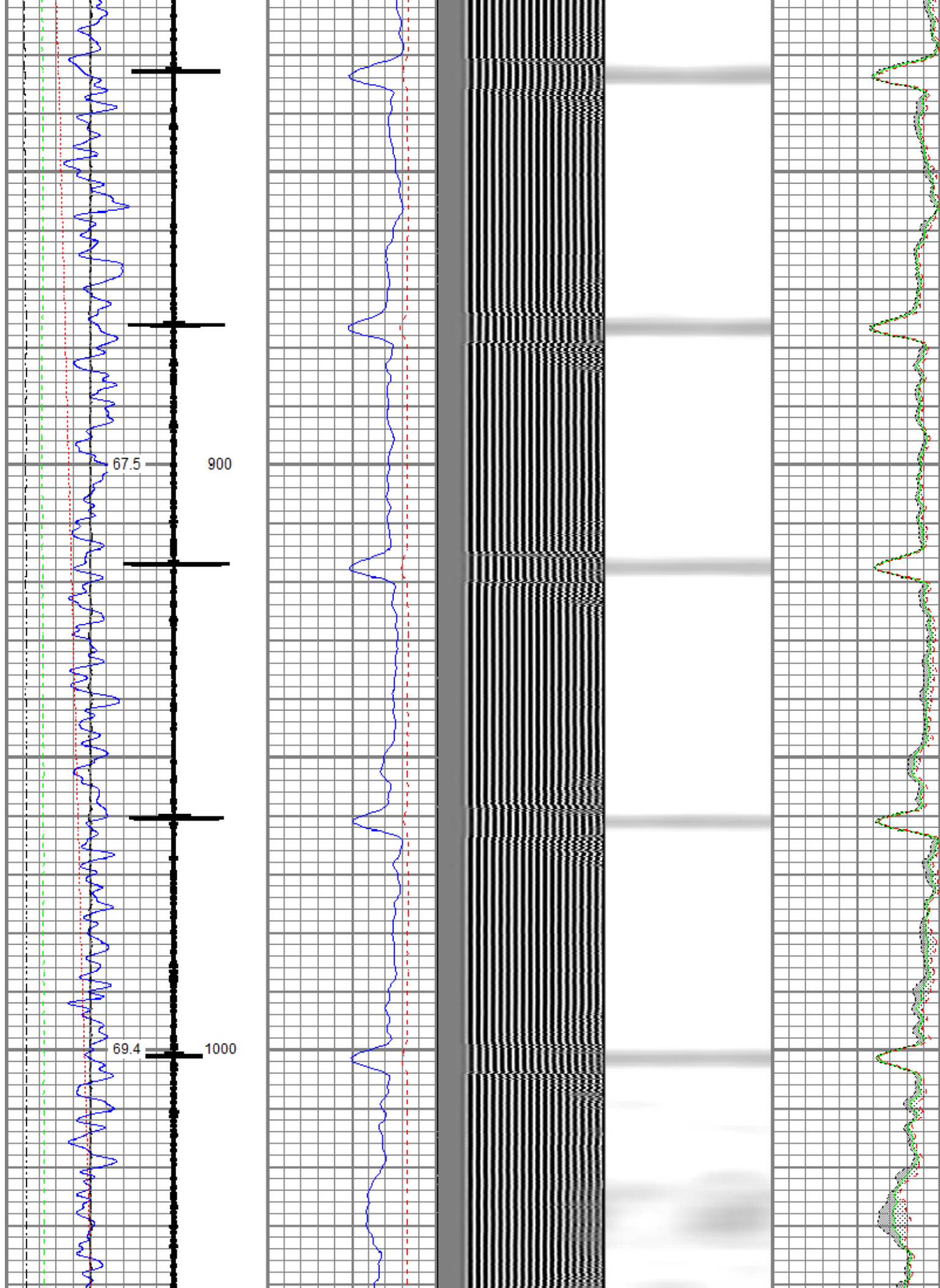
| | | | | | | |
|--------------------------|------|-------------------|-----|-------------------------|------------|-------------------|
| Gamma Ray | 0 | 3' Amplitude (mV) | 100 | 5' Variable Density Log | Sector Map | Average Amplitude |
| (GAPI) | 120 | 3' Amplitude x 5 | 200 | (u sec) | 1200 | 0 100 |
| Temperature | 0 | (mV) | 20 | | | Minimum Amplitude |
| (degF) | 20 | 3' Travel Time | | | | 0 100 |
| Line Speed | -150 | (u sec) | 150 | | | Maximum Amplitude |
| (ft/min) | 150 | | | | | 0 100 |
| Line Tension (lb) | 0 | | 000 | | | |
| Differential Temperature | -2 | | 2 | | | |
| (degF) | | | | | | |
| Casing Collar Locator | | | | | | |

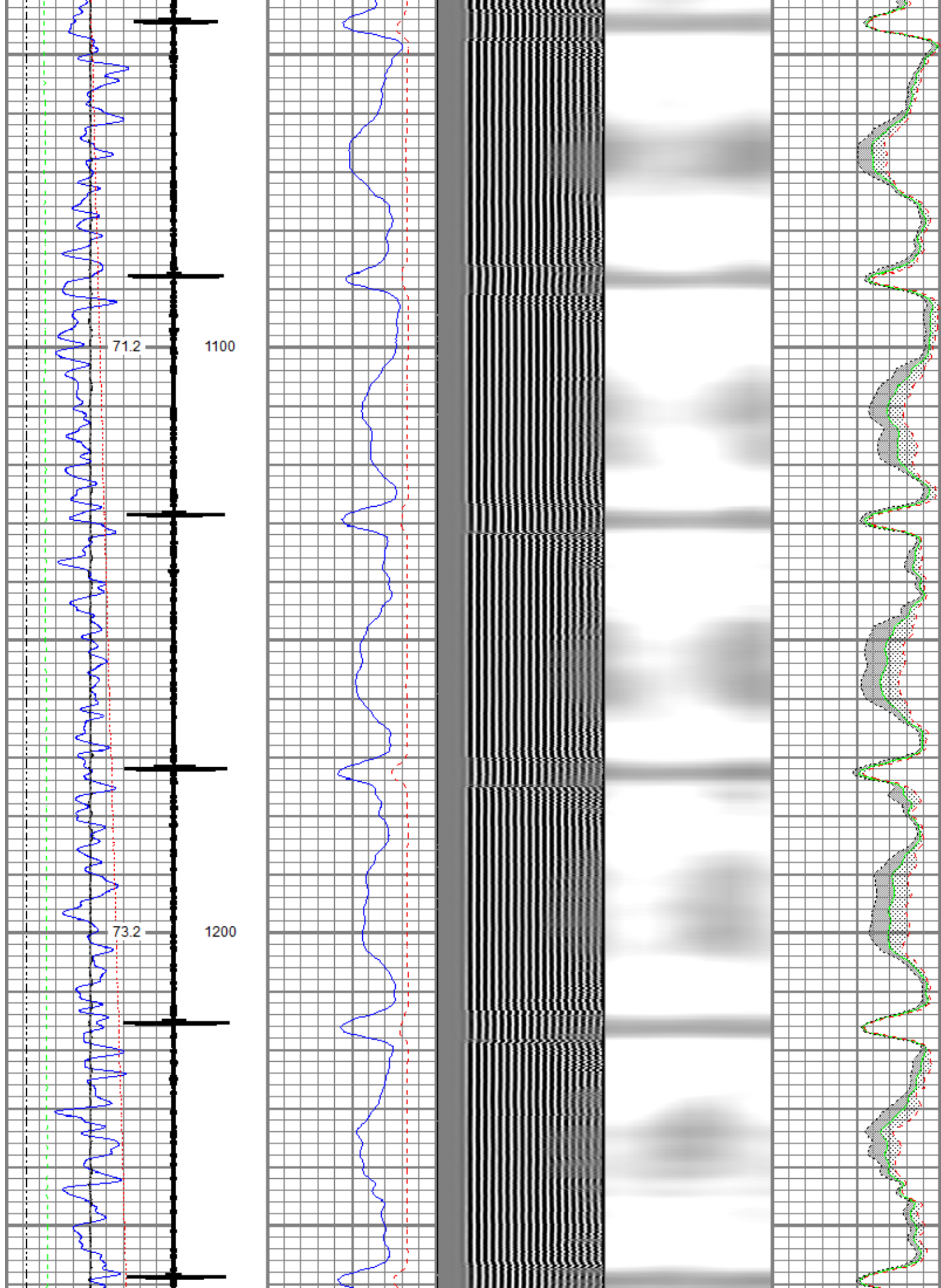


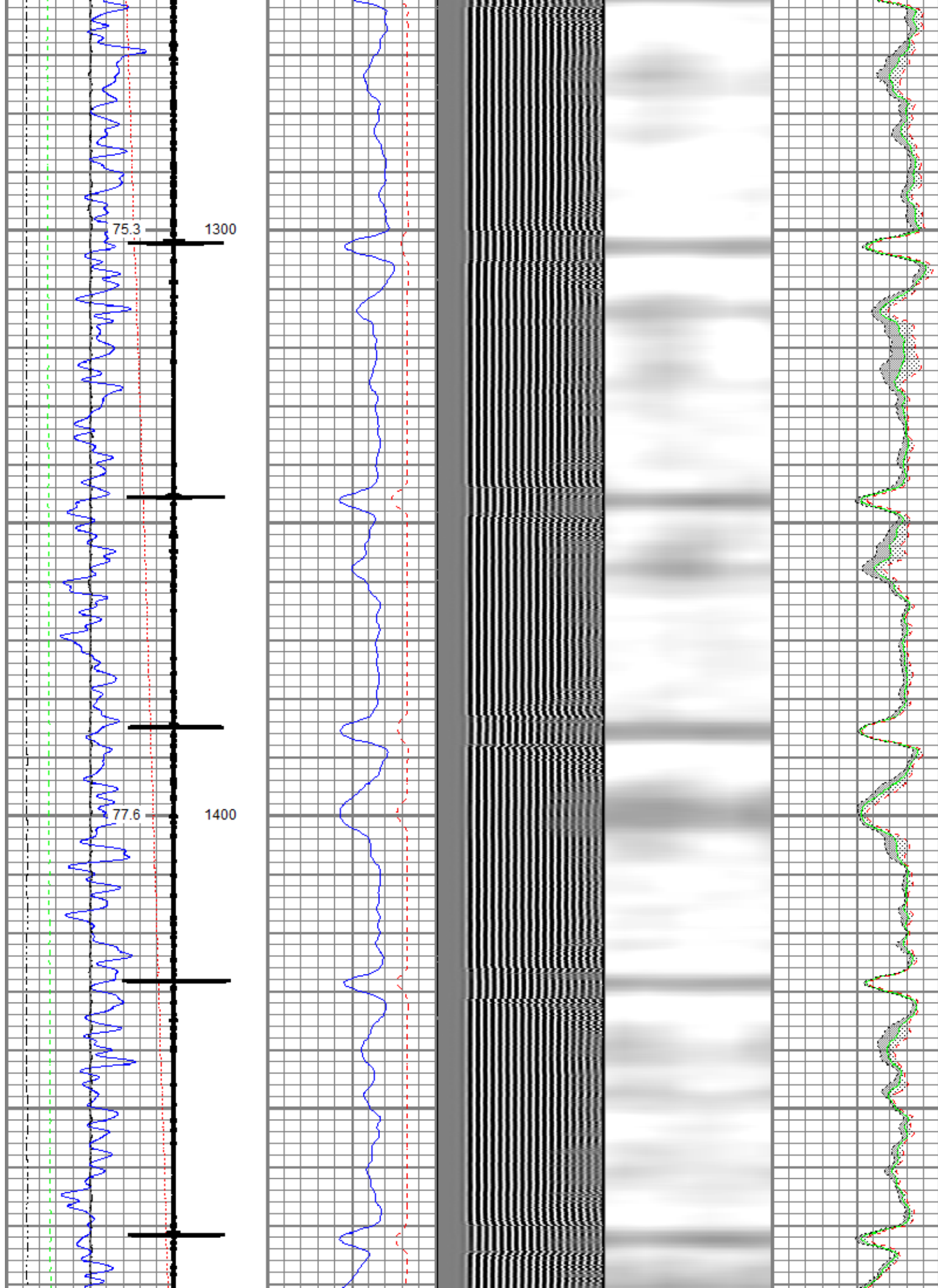


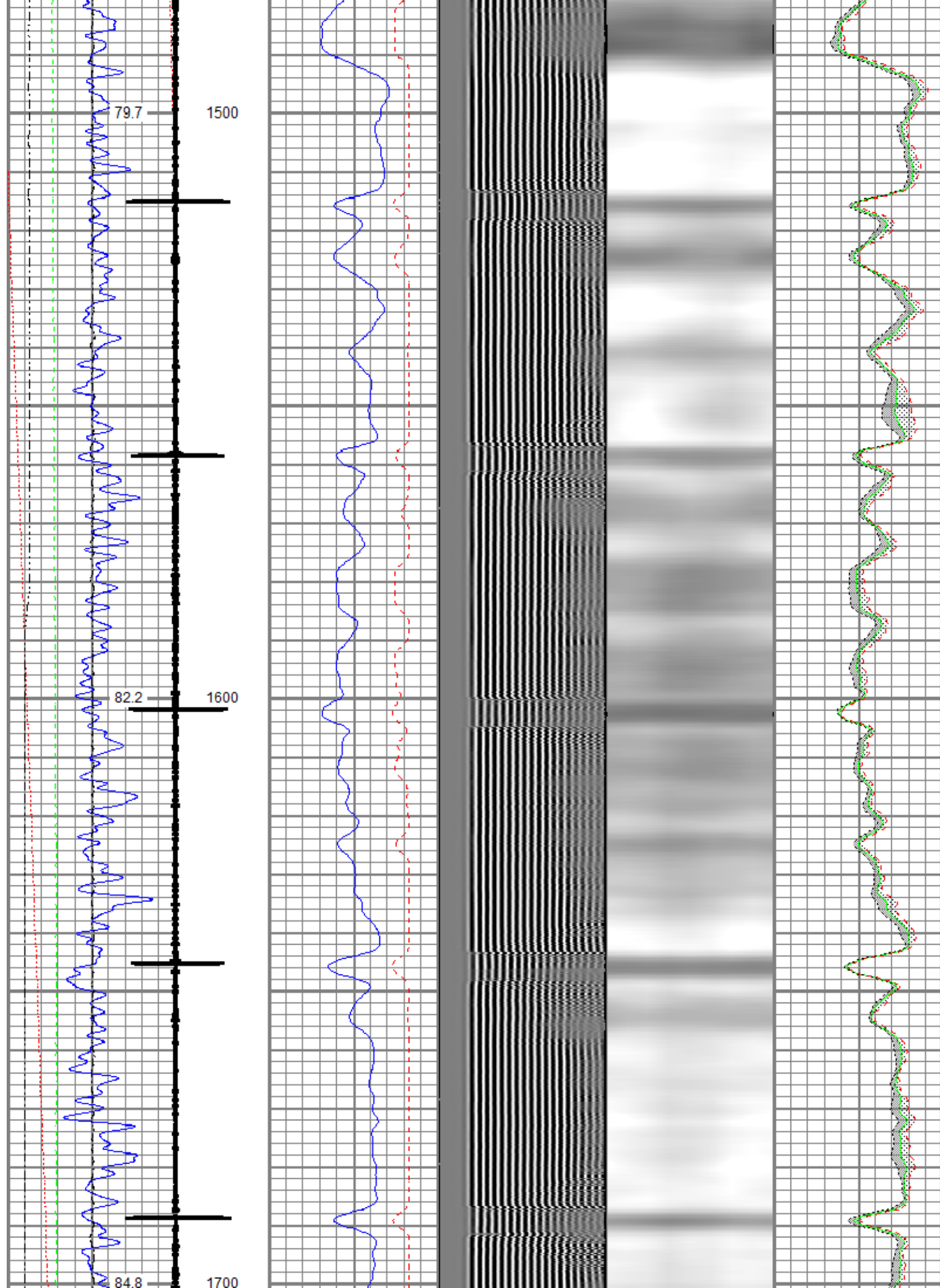


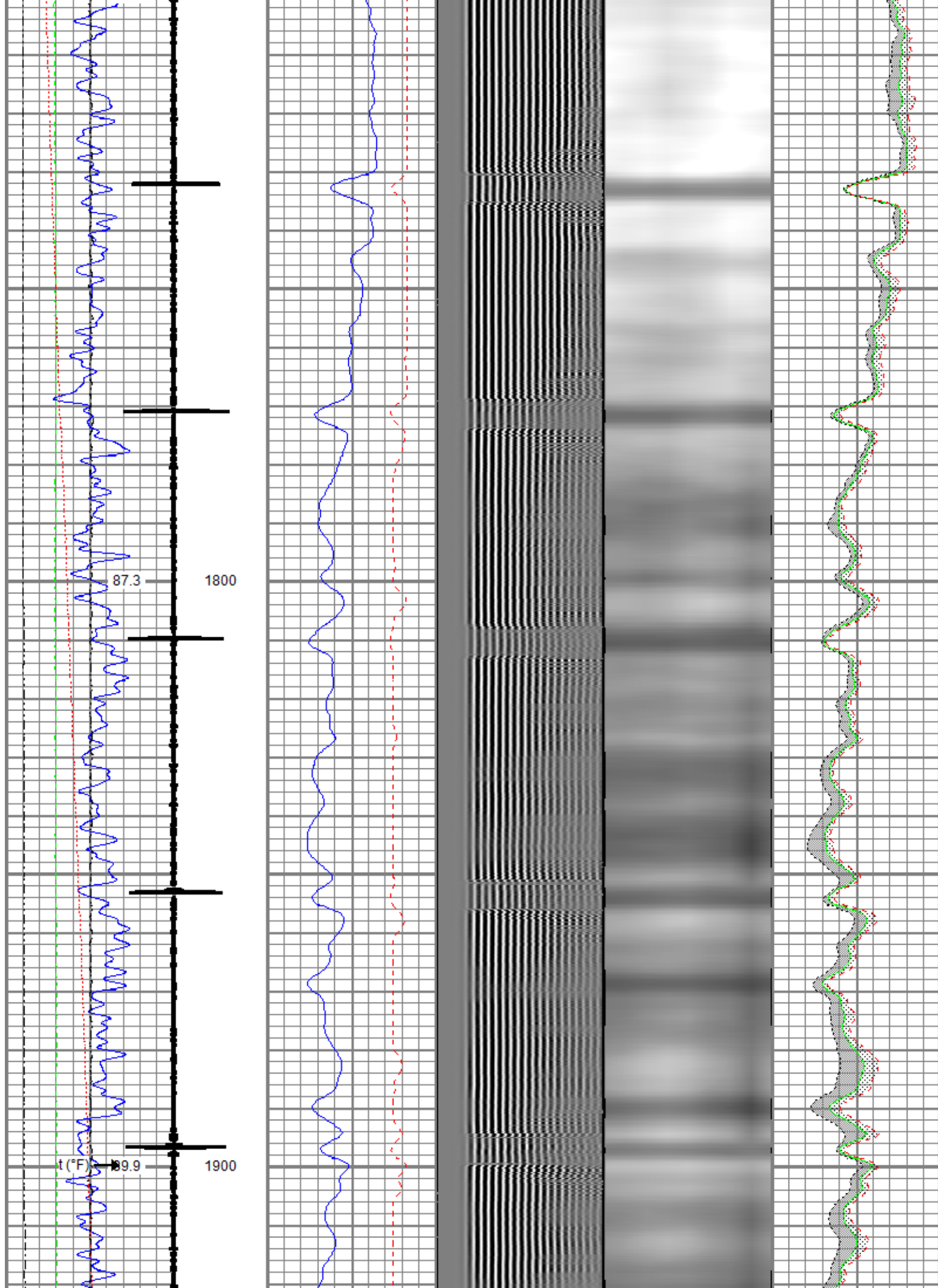


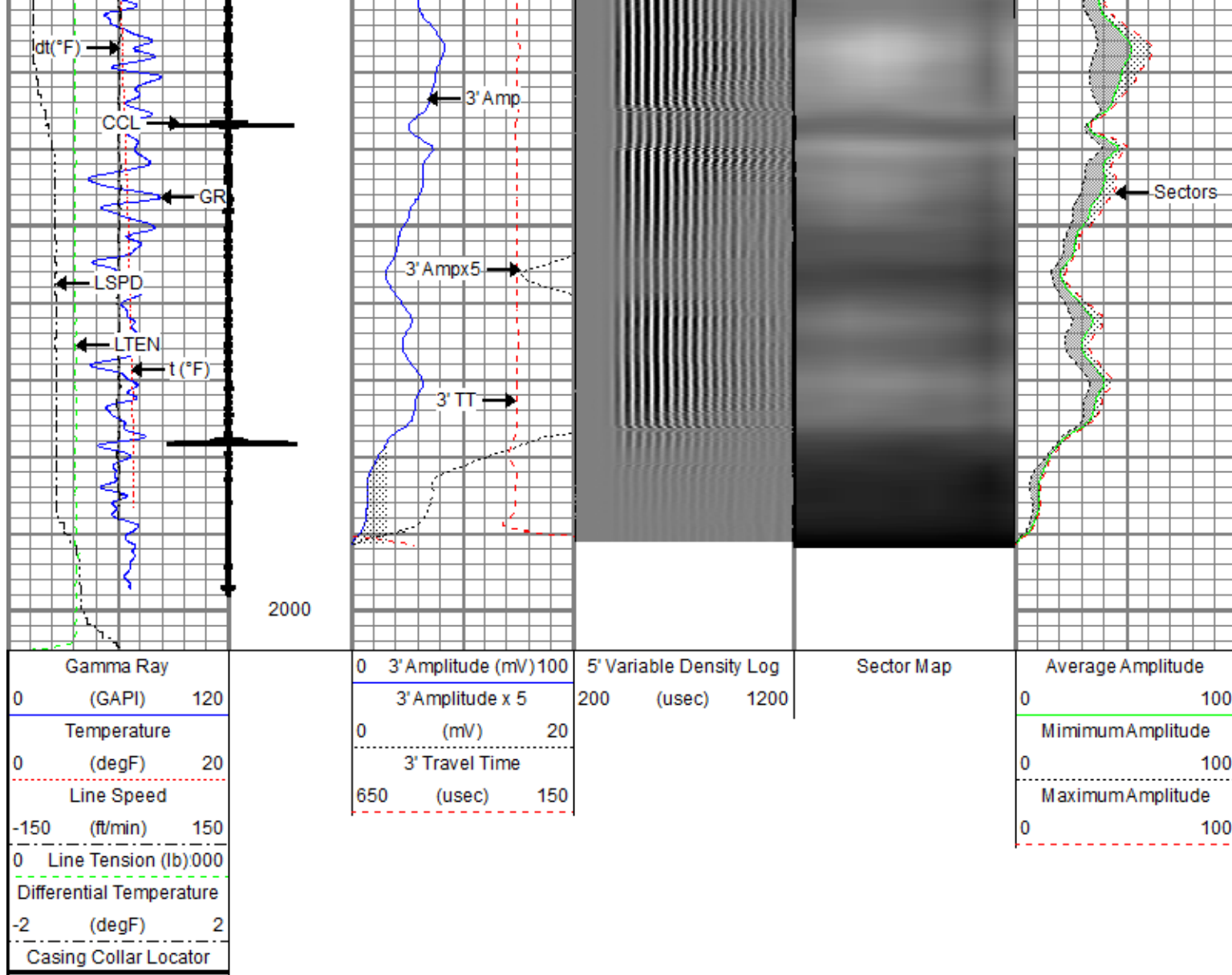








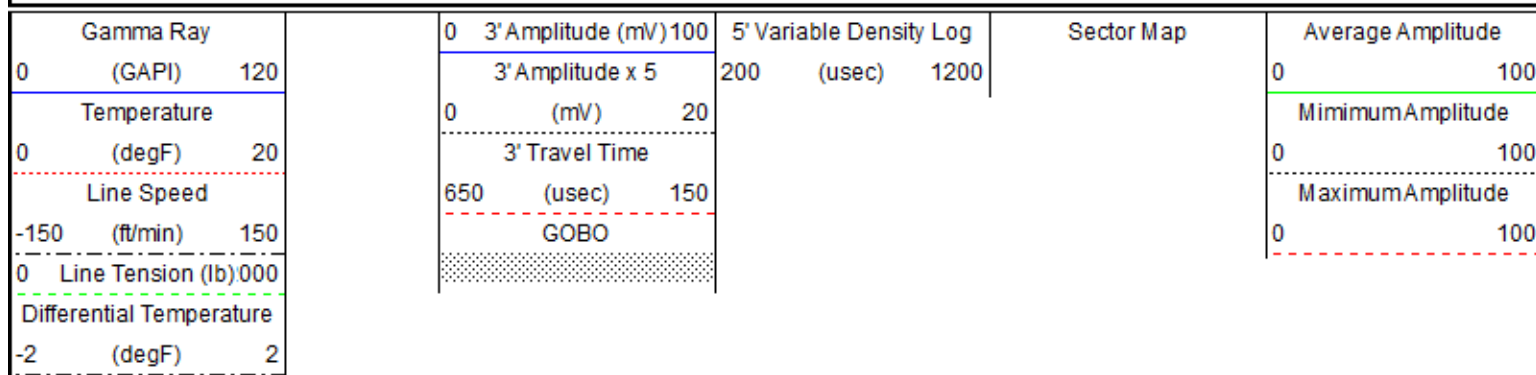




Repeat Pass

Recorded with 0 PSI Surface Induced Pressure

Database File oxy_05123314920000_rbl_09_01_2020.db
 Dataset Pathname Repeat/pass2
 Presentation Format ros_radil_oxy_vert_gobo_45
 Dataset Creation Tue Sep 01 12:32:35 2020
 Charted by Depth in Feet scaled 1:240



Repeat Pass

Repeat Pass

1900

Repeat Pass

Repeat Pass

2000

Gamma Ray
(GAPI) 120

Temperature
(degF) 20

Line Speed

0 3' Amplitude (mV) 100
3' Amplitude x 5

0 (mV) 20
3' Travel Time

650 (usec) 150


5' Variable Density Log
200 (usec) 1200

Sector Map

Average Amplitude
0 100

Minimum Amplitude
0 100

Maximum Amplitude

| | | | | | |
|--|------|--|--|--|--|
| LOCIM UTCTIM | 0.00 |  | | | |
| Dataset: oxy_05123314920000_rbl_09_01_2020.db: field/well/Main/pass3.1 Total length: 23.86 ft Total weight: 223.60 lb O.D.: 2.75 in | | | | | |

| Calibration Report | | |
|------------------------------|--------------------------------------|----------|
| Database File | oxy_05123314920000_rbl_09_01_2020.db | |
| Dataset Pathname | Main/pass3.1 | |
| Dataset Creation | Tue Sep 01 12:58:56 2020 | |
| Gamma Ray Calibration Report | | |
| Serial Number: | FW1810-001 | |
| Tool Model: | 2750 6PB | |
| Performed: | Tue Dec 03 09:24:53 2019 | |
| Calibrator Value: | 637.0 | GAPI |
| Background Reading: | 100.1 | cps |
| Calibrator Reading: | 1264.5 | cps |
| Sensitivity: | 0.5471 | GAPI/cps |

| Segmented Cement Bond Log Calibration Report | | | | | | |
|--|----------|-------|-----------------|---------|---------|--------|
| Serial Number: | 120855 | | | | | |
| Tool Model: | 2750 RBT | | | | | |
| Calibration Casing Diameter: | 4.500 | | in | | | |
| Calibration Depth: | 0.105 | | ft | | | |
| Master Calibration, performed (Derived): | | | | | | |
| | Raw (v) | | Calibrated (mv) | | Results | |
| | Zero | Cal | Zero | Cal | Gain | Offset |
| 3' | 0.000 | 0.229 | 0.000 | 81.196 | 354.346 | -0.106 |
| CAL | 0.329 | 0.331 | | | | |
| 5' | 0.000 | 0.233 | 0.000 | 81.196 | 348.512 | -0.052 |
| SUM | | | | | | |
| S1 | 0.000 | 0.228 | 0.000 | 100.000 | 438.409 | -0.164 |
| S2 | 0.000 | 0.229 | 0.000 | 100.000 | 437.931 | -0.185 |
| S3 | 0.000 | 0.233 | 0.000 | 100.000 | 429.452 | -0.171 |
| S4 | 0.000 | 0.244 | 0.000 | 100.000 | 411.321 | -0.174 |
| S5 | 0.000 | 0.243 | 0.000 | 100.000 | 412.801 | -0.165 |
| S6 | 0.000 | 0.238 | 0.000 | 100.000 | 420.719 | -0.136 |
| S7 | 0.000 | 0.230 | 0.000 | 100.000 | 434.706 | -0.162 |
| S8 | 0.000 | 0.226 | 0.000 | 100.000 | 442.713 | -0.121 |

| Air Zero Calibration, performed Tue Sep 01 12:12:44 2020: | | | | | | |
|---|---------|--|----------------|--|---------|--|
| | Raw (v) | | Calibrated (v) | | Results | |
| | Zero | | Zero | | Offset | |
| 3' | 0.000 | | 0.000 | | 0.000 | |
| 5' | 0.000 | | 0.000 | | 0.000 | |
| SUM | | | | | | |
| S1 | 0.000 | | 0.000 | | 0.000 | |
| S2 | 0.000 | | 0.000 | | 0.000 | |
| S3 | 0.000 | | 0.000 | | 0.000 | |
| S4 | 0.000 | | 0.000 | | 0.000 | |
| S5 | 0.000 | | 0.000 | | 0.000 | |
| S6 | 0.000 | | 0.000 | | 0.000 | |
| S7 | 0.000 | | 0.000 | | 0.000 | |

S8

0.000

0.000

0.000

Temperature Calibration Report

Serial Number: 120855
Tool Model: 2750 RBT
Performed: Wed Dec 18 13:34:18 2019

| | Reference | Reading |
|--|-----------|---------|
|--|-----------|---------|

| | | |
|----------------|-------------|-------------|
| Low Reference: | 100.00 degF | 112.30 degF |
|----------------|-------------|-------------|

| | | |
|-----------------|-------------|-------------|
| High Reference: | 350.00 degF | 394.75 degF |
|-----------------|-------------|-------------|

| | |
|-------|------|
| Gain: | 0.89 |
|-------|------|

| | |
|---------|------|
| Offset: | 0.60 |
|---------|------|

| | |
|---------------|---|
| Delta Spacing | 1 |
|---------------|---|



RELIANCE
OILFIELD SERVICES

Company Kerr-McGee Oil & Gas Onshore, L.P.

Well UPRC P 05-24D

Field Wattenberg

County Weld

State Colorado