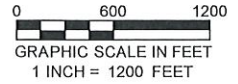
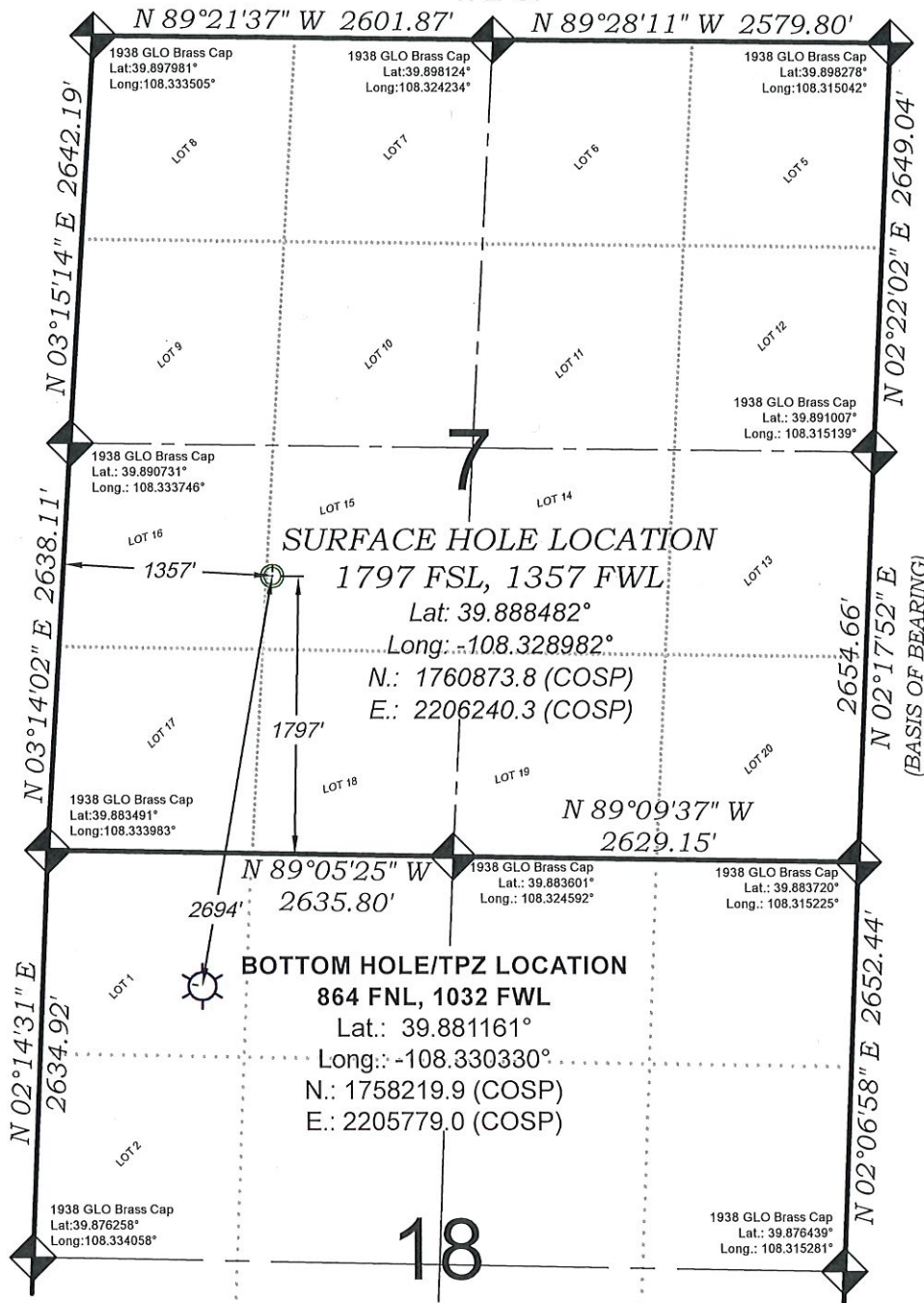


Federal RG 411-18-297


T. 2 S.




EXISTING GROUND ELEV.: 6603.0  
PROPOSED PAD ELEV.: 6602.8


SEE LOCATION PLAT 6 FOR VISIBLE IMPROVEMENTS WITHIN 500' OF THIS LOCATION

- LEGEND -

FIELD LOCATED SECTION MONUMENTS AS DESCRIBED 

FIELD SURVEYED WELL LOCATION 

CALCULATED BOTTOM HOLE/TOP OF PRODUCTION ZONE LOCATION 

CALCULATED SECTION CORNER LOCATION 

NOTES

- 1) ELEVATIONS BASED ON N.A.V.D. 1988 PUBLISHED COORDINATES.
- 2) LATITUDES AND LONGITUDES ARE BASED ON NAD 83, PUBLISHED COORDINATES.
- 3) STATE PLANE COORDINATES ARE BASED ON COLORADO CENTRAL ZONE, U.S. SURVEY FEET.
- 4) ELEVATION MASK SET TO 15°
- 5) GPS OPERATOR J. KIRKPATRICK, OBSERVED A PDOP OF 2.6 FOR SURVEY POINT NUMBER 19463.
- 6) SURFACE AND BOTTOM HOLE LOCATIONS ARE MEASURED 90° FROM SECTION LINES.

REFERENCES

- 1) 1940 (GLO) & 1983 (BLM) Dependent ReSurvey T. 2 S., R. 97 W., 6th P.M.
- 2) U.S.G.S. QUAD: Rock School and Square S Ranch, CO

SURVEYORS STATEMENT

I, MICHAEL J. LANGHORNE, A REGISTERED LAND SURVEYOR IN THE STATE OF COLORADO DO HEREBY CERTIFY THAT THE SURVEY SHOWN HEREON WAS PREPARED UNDER MY DIRECT SUPERVISION AND HAS BEEN STAKED ON THE GROUND AS SHOWN ON THE PLAT AND CHECKING THAT THIS MAP IS A TRUE REPRESENTATION THEREOF.

*Michael J. Langhorne*

MICHAEL J. LANGHORNE, COLORADO REGISTRATION NO. 36572  
FOR AND ON BEHALF OF  
BOOKCLIFF SURVEY SERVICES, INC.

REVISED: 8/31/20

136 East Third Street  
Rifle, Colorado  
81650 Ph. (970)  
625-2720 Fax (970)  
625-2773



**BOOKCLIFF**  
Survey Services, Inc.

SURVEY DATE:	8/23/19
MAP DATE:	9/04/19
SCALE:	1" = 1200'
PLAT:	1 of 8
PROJECT:	TEP Valley

WELL LOCATION PLAT Prepared for:



TEP Rocky Mountain LLC

NE1/4 SW1/4, SECTION 7  
T. 2 S., R. 97 W. of the 6th P.M.  
Rio BLANCO COUNTY, COLORADO