



Well Services
E - L I N E

**RADIAL BOND TOOL
GAMMA RAY
CCL**

Company NOBLE ENERGY INC.
Well CARLSON 15-29
Field WATTENBERG
County WELD
State COLORADO

Company NOBLE ENERGY INC.
Well CARLSON 15-29
Field WATTENBERG
County WELD State COLORADO

Location: API # : 05-123-20688

Other Services

SEC 29 TWP 5N RGE 66W

NE/SW

Permanent Datum GL
Log Measured From KB 14'
Drilling Measured From KB
Elevation 4860'

KB. 4874'
D.F. 4873'
G.L. 4860'

Date 9-11-2019

Run Number ONE
Depth Driller 7501'
Depth Logger 6955'
Bottom Logged Interval 6955'
Top Log Interval SURFACE
Open Hole Size NA
Type Fluid WATER
Density / Viscosity NA
Max. Recorded Temp. 182
Estimated Cement Top 3508'
Time Well Ready NA
Time Logger on Bottom NA
Equipment Number 7770
Location GREELEY CO
Recorded By A.STEERMAN
Witnessed By SCOTT

Borehole Record
Run Number Bit From To Size Weight From To

Casing Record
Surface String 8.63 Wgt/Ft 24# Top SURFACE Bottom 638'
Prot. String
Production String 4.5 11.6# SURFACE 7490'
Liner


<<< Fold Here >>>


All interpretations are opinions based on inferences from electrical or other measurements and we cannot and do not guarantee the accuracy or correctness of any interpretation, and we shall not, except in the case of gross or willful negligence on our part, be liable or responsible for any loss, costs, damages, or expenses incurred or sustained by anyone resulting from any interpretation made by any of our officers, agents or employees. These interpretations are also subject to our general terms and conditions set out in our current Price Schedule.



Comments

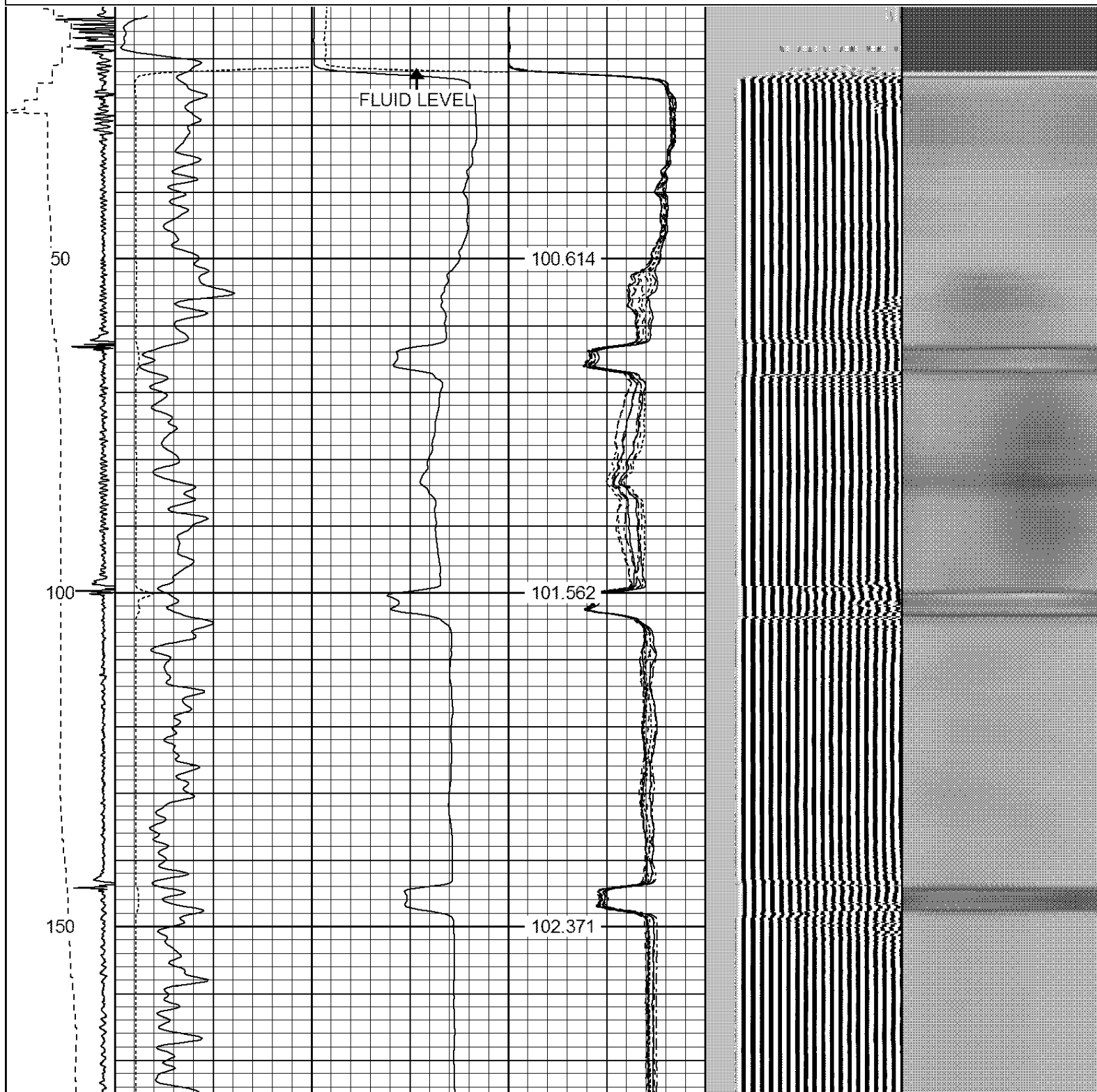
RAN CBL TO VERIFY CEMENT BOND
WELL LOADED APON ARRIVAL
CORRELATED TO ASAP LOG FROM 1-31-2002

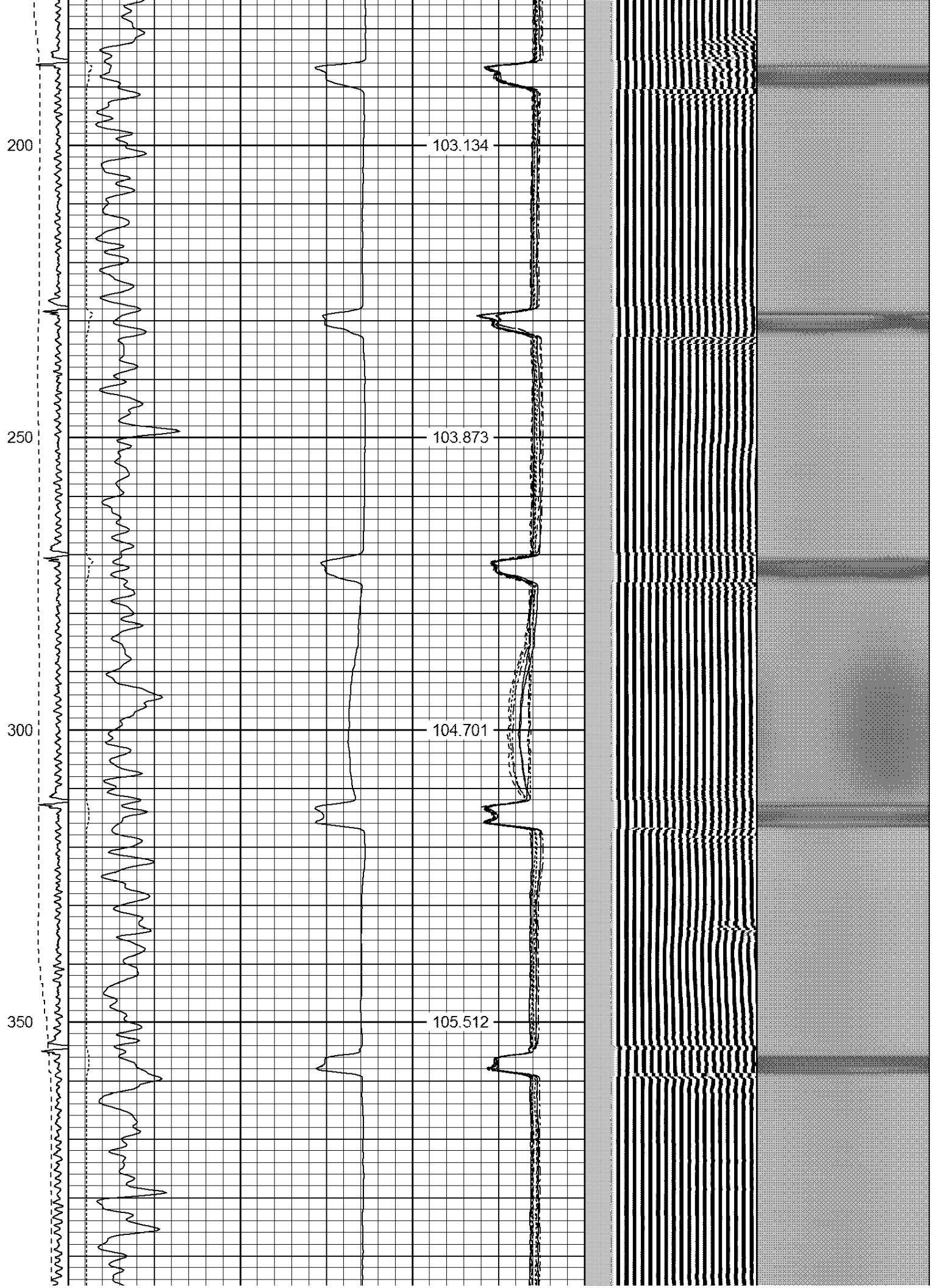
THANK YOU FOR USING SPN WELL SERVICES!

Sensor	Offset (ft)	Schematic	Description	Len (ft)	OD (in)	Wt (lb)
HEADVOLT	15.02					

IntTemp	13.60					
WVF3FT	10.35					
WVFCAL	10.35					
WVFS1	10.35					
WVFS2	10.35					
WVFS3	10.35					
WVFS4	10.35					
WVFS5	10.35					
WVFS6	10.35					
WVFS7	10.35					
WVFS8	10.35					
WVF5FT	9.35					
CNLSC	6.00					
CNSSC	5.17					
CCL	3.64					
GR	0.90					
			RBT-Probe (Base) Probe Radlii Bond Tool with Digital Telemetry	8.92	2.75	90.00
			CNT-Probe_B (275) 6 bow centralizer	1.77	2.75	40.00
			GR-Probe (275) Probe 2.75"	4.33	2.75	30.00
Dataset: carlson 15-29.db: field/well/run1/pass3 Total Length: 15.02 ft Total Weight: 160.00 lb O.D. 2.75 in						

-9	CCL	1	200	TT (usec)	800	0	AMP (mV)	100	0	AMPS1	100	200	VDL	1200	1	Cement Map	8
LSPD (ft/min)	0		0	GR (GAPI)	200	0	AMPx5 (mV)	20	0	AMPS2	100			1		100	
	200		200	GR (GAPI)	400				0	AMPS3	100						
0	250								0	AMPS4	100						
									0	AMPS5	100						
									0	AMPS6	100						
									0	AMPS7	100						
									0	AMPS8	100						
									IntTemp								
									(degF)								





400

106.133

450

106.768

500

107.431

550

108.211

600

108.844



650

109.623

700

110.367

750

111.104

800

111.887



850

112.625

900

113.393

950

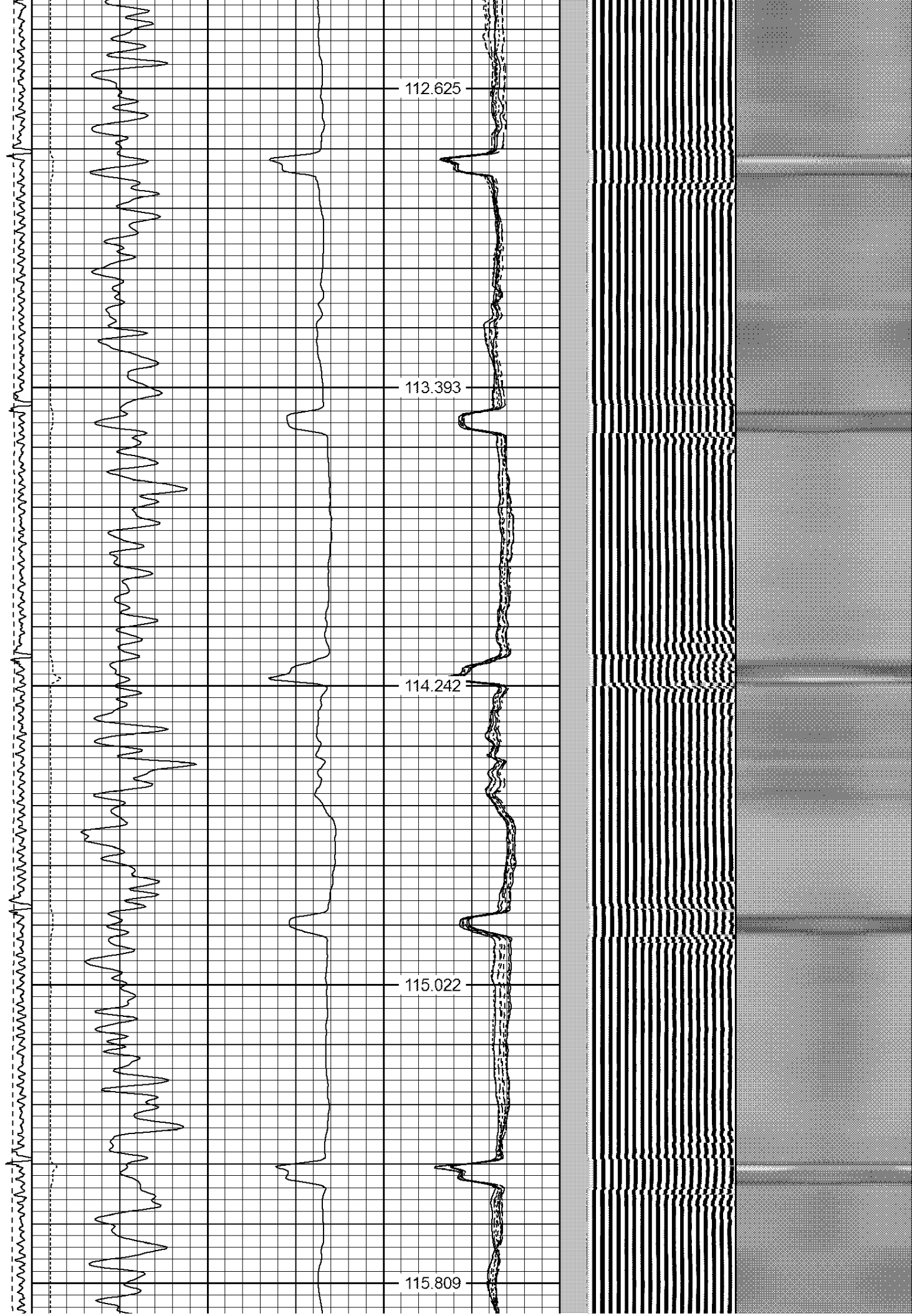
114.242

1000

115.022

1050

115.809



1100

1150

1200

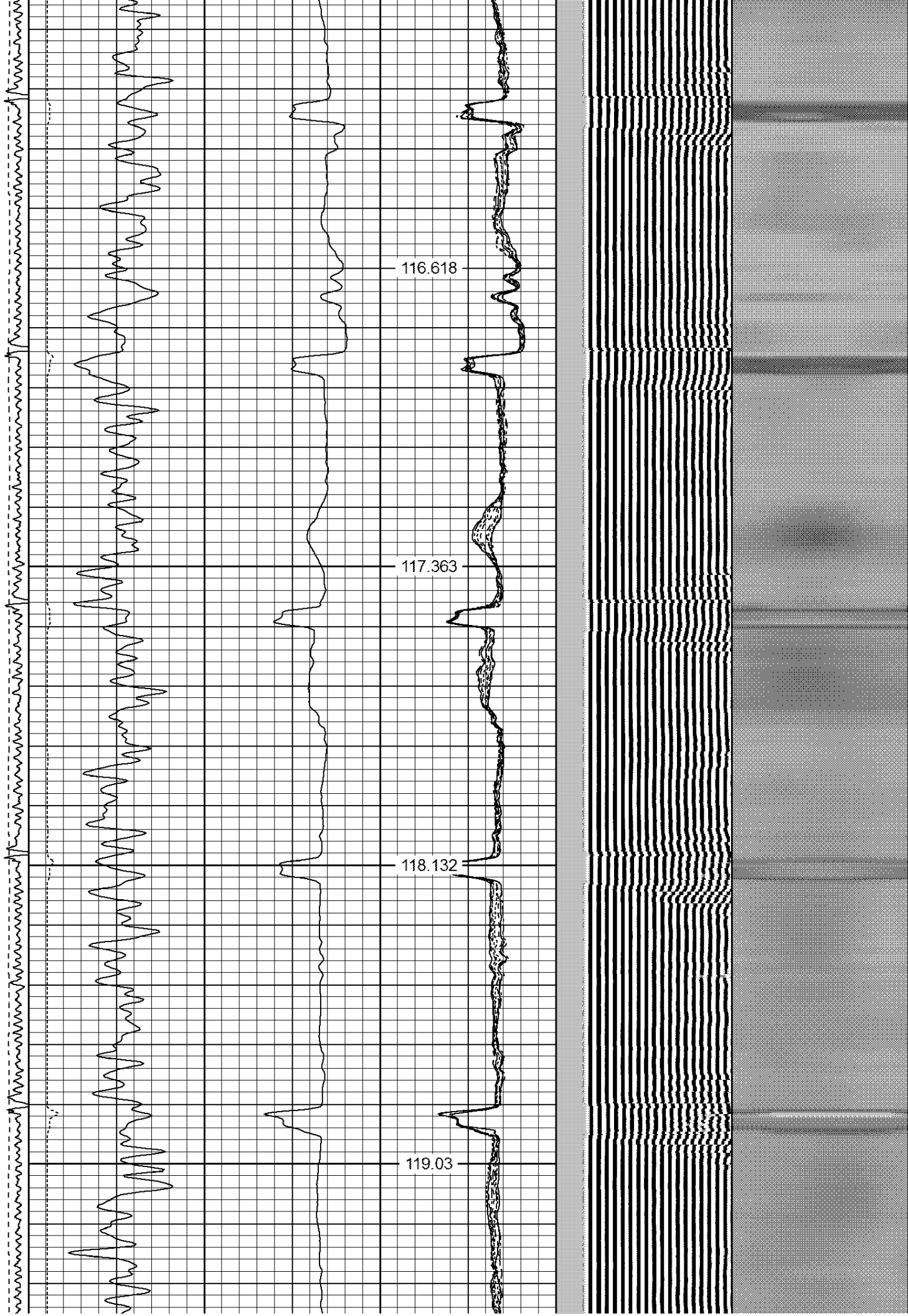
1250

116.618

117.363

118.132

119.03



1300

119.984

1350

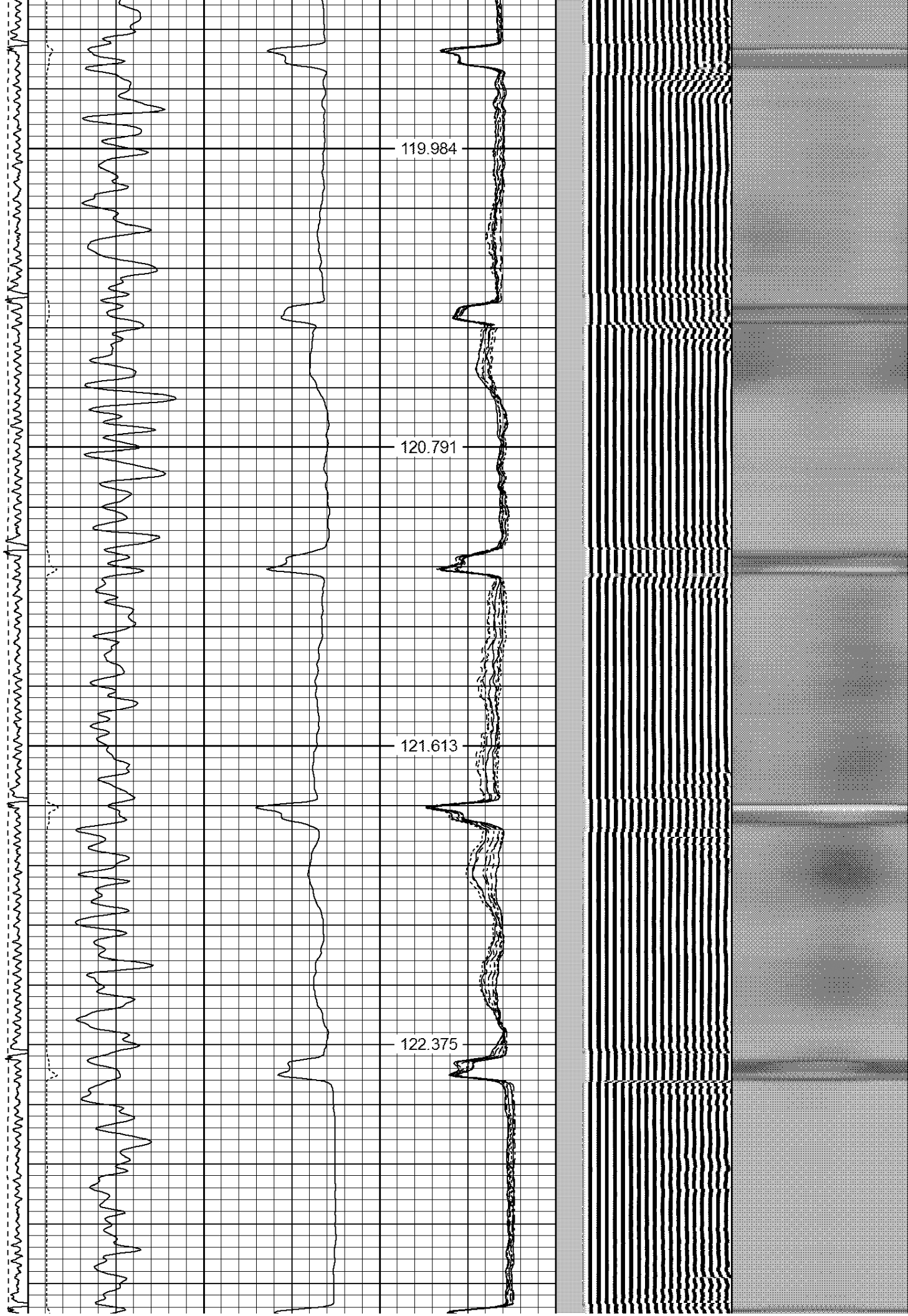
120.791

1400

121.613

1450

122.375



1500
1550
1600
1650
1700

123.345
124.196
125.061
125.847
126.709



1750

1800

1850

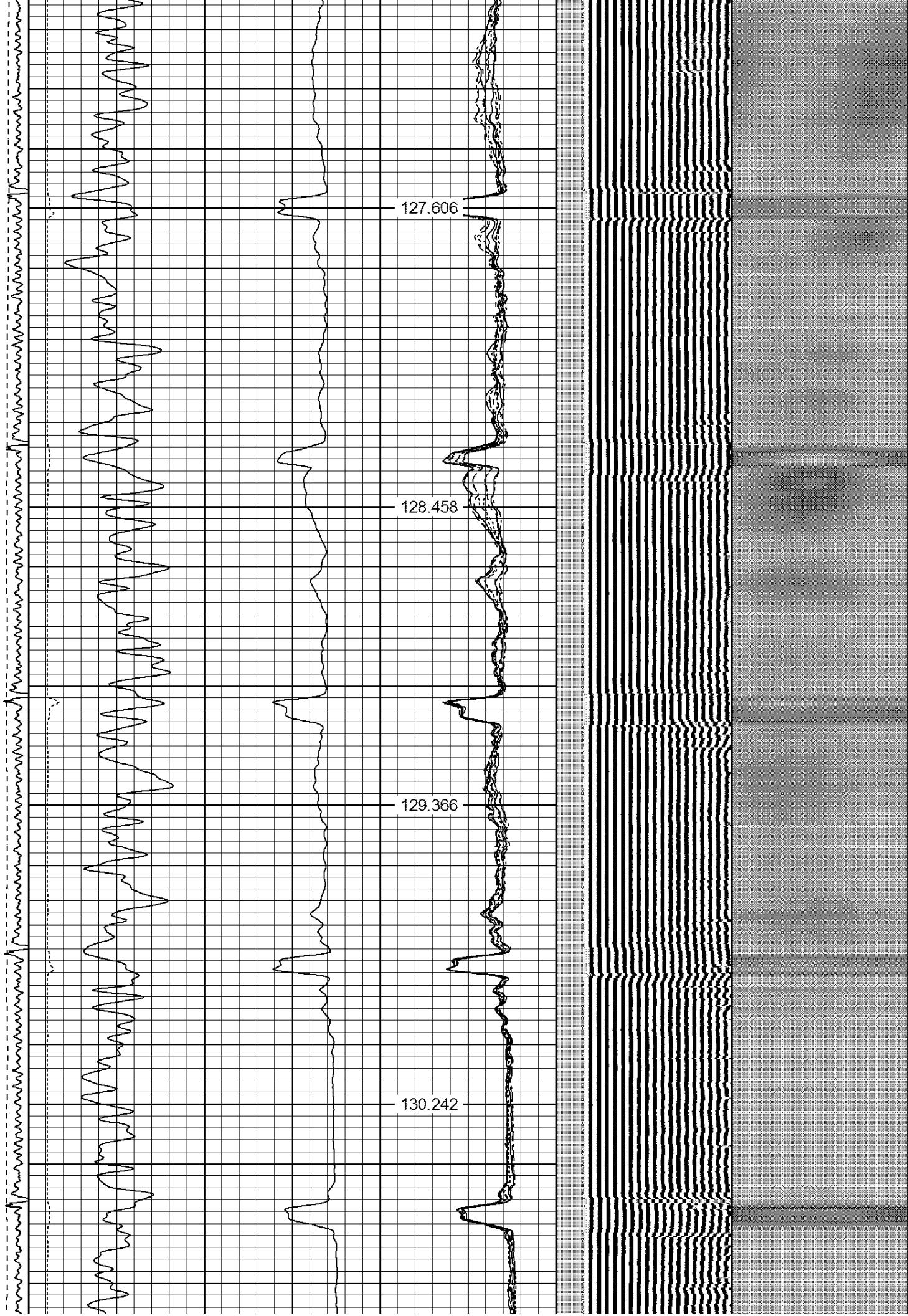
1900

127.606

128.458

129.366

130.242



1950

131.149

2000

131.987

2050

132.838

2100

133.707

2150

134.634



2200

135.518

2250

136.434

2300

137.223

2350

138.091



2400

138.953

2450

139.818

2500

140.613

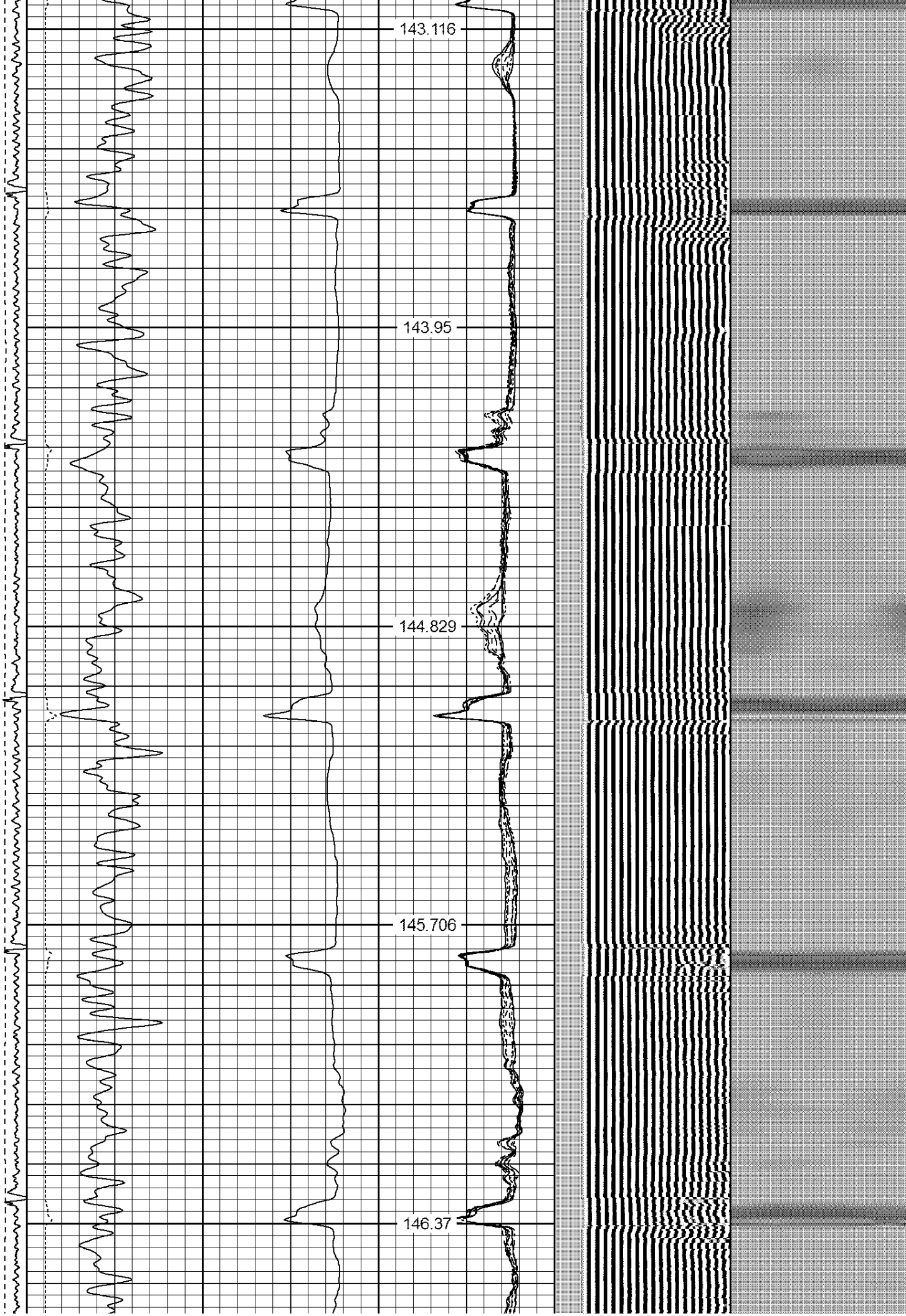
2550

142.244



2600
2650
2700
2750
2800

143.116
143.95
144.829
145.706
146.37



2850

147.228

2900

148.014

2950

148.95

3000

149.727



3050

150.569

3100

151.352

3150

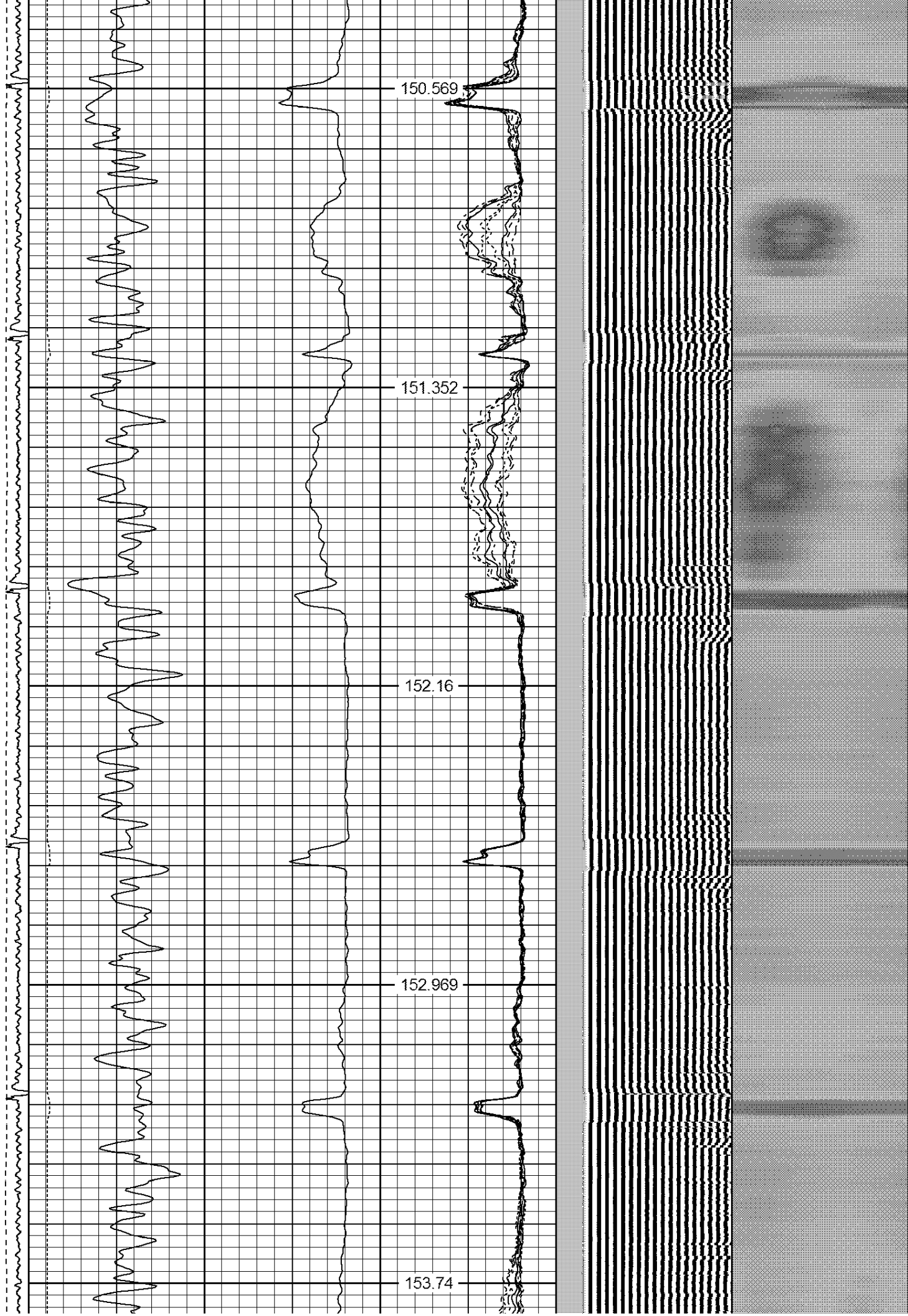
152.16

3200

152.969

3250

153.74



3300

3350

3400

3450

154.642

155.486

156.271

157.032



3500

157.882

ESTIMATED TOP OF CEMENT

3550

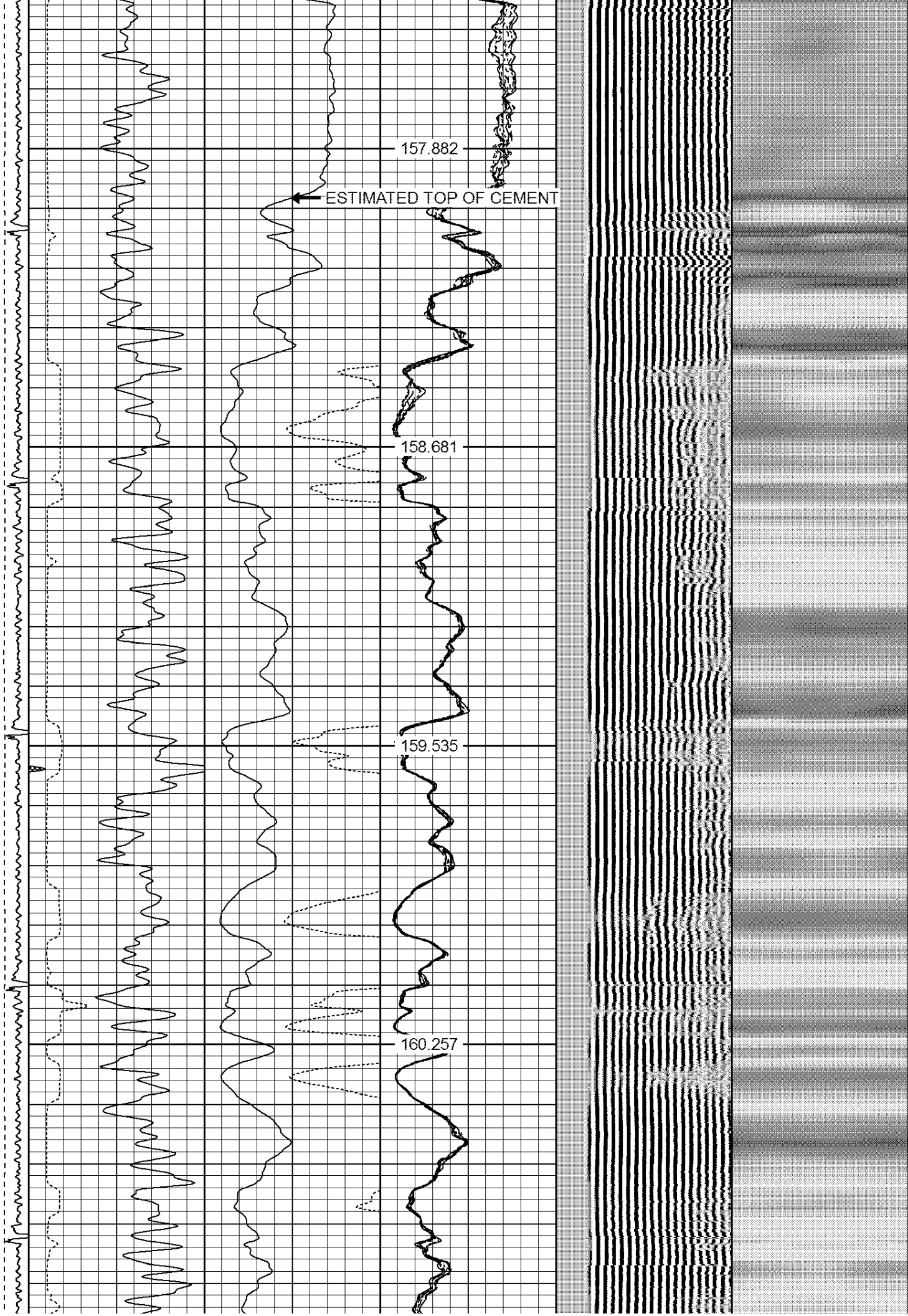
158.681

3600

159.535

3650

160.257



3700

161.064

3750

161.907

3800

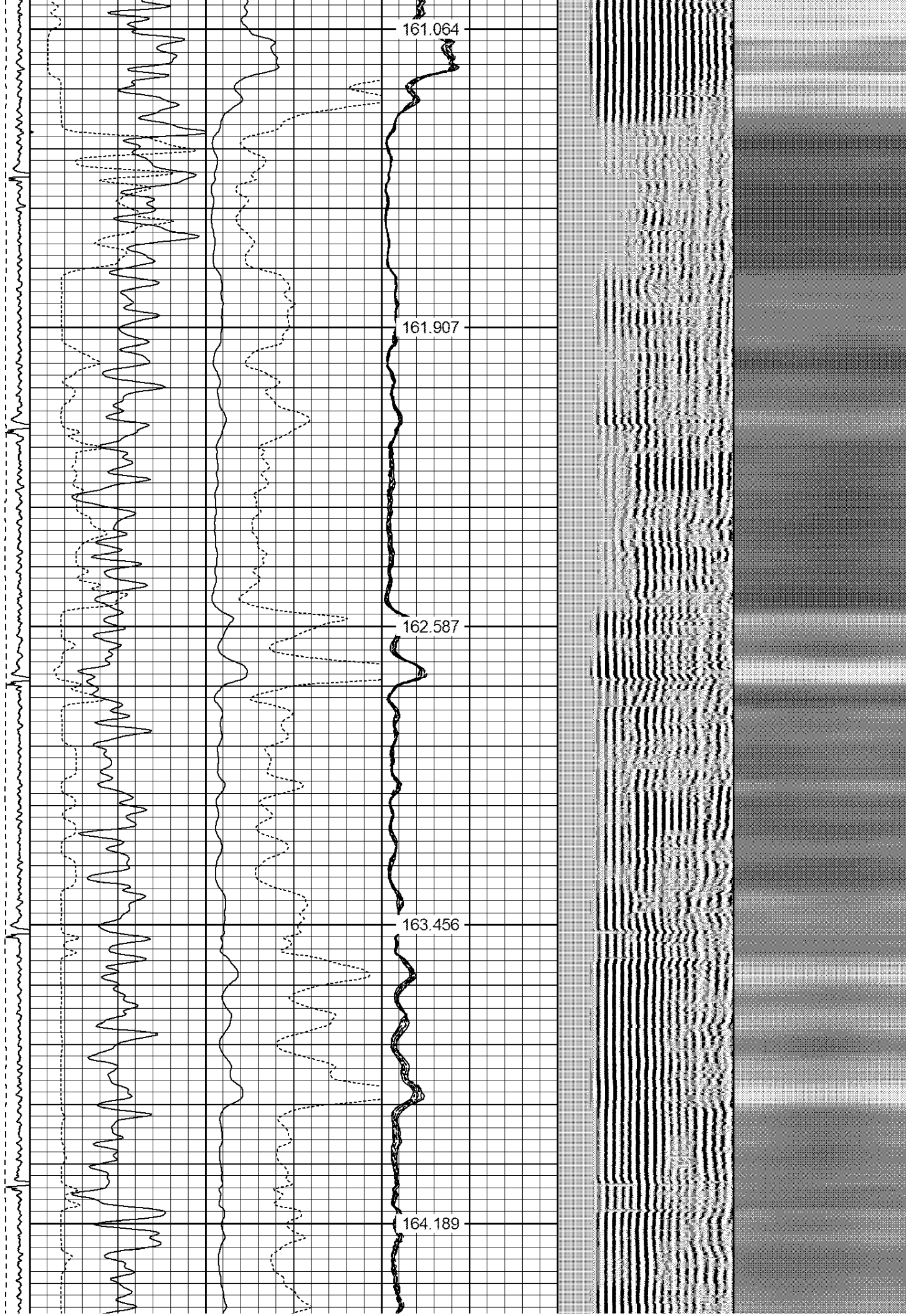
162.587

3850

163.456

3900

164.189



3950

164.943

4000

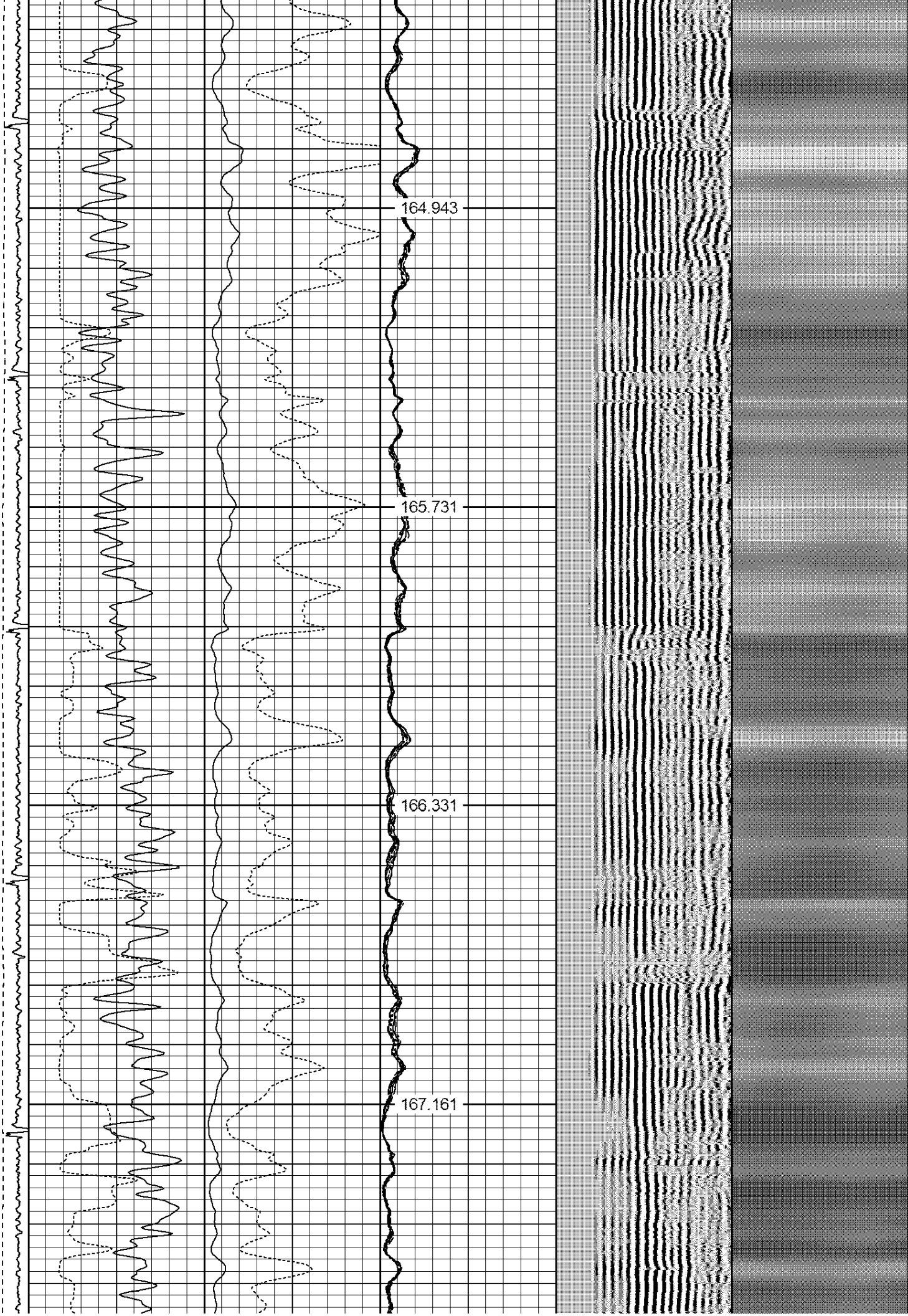
165.731

4050

166.331

4100

167.161



4150

167.894

4200

168.574

4250

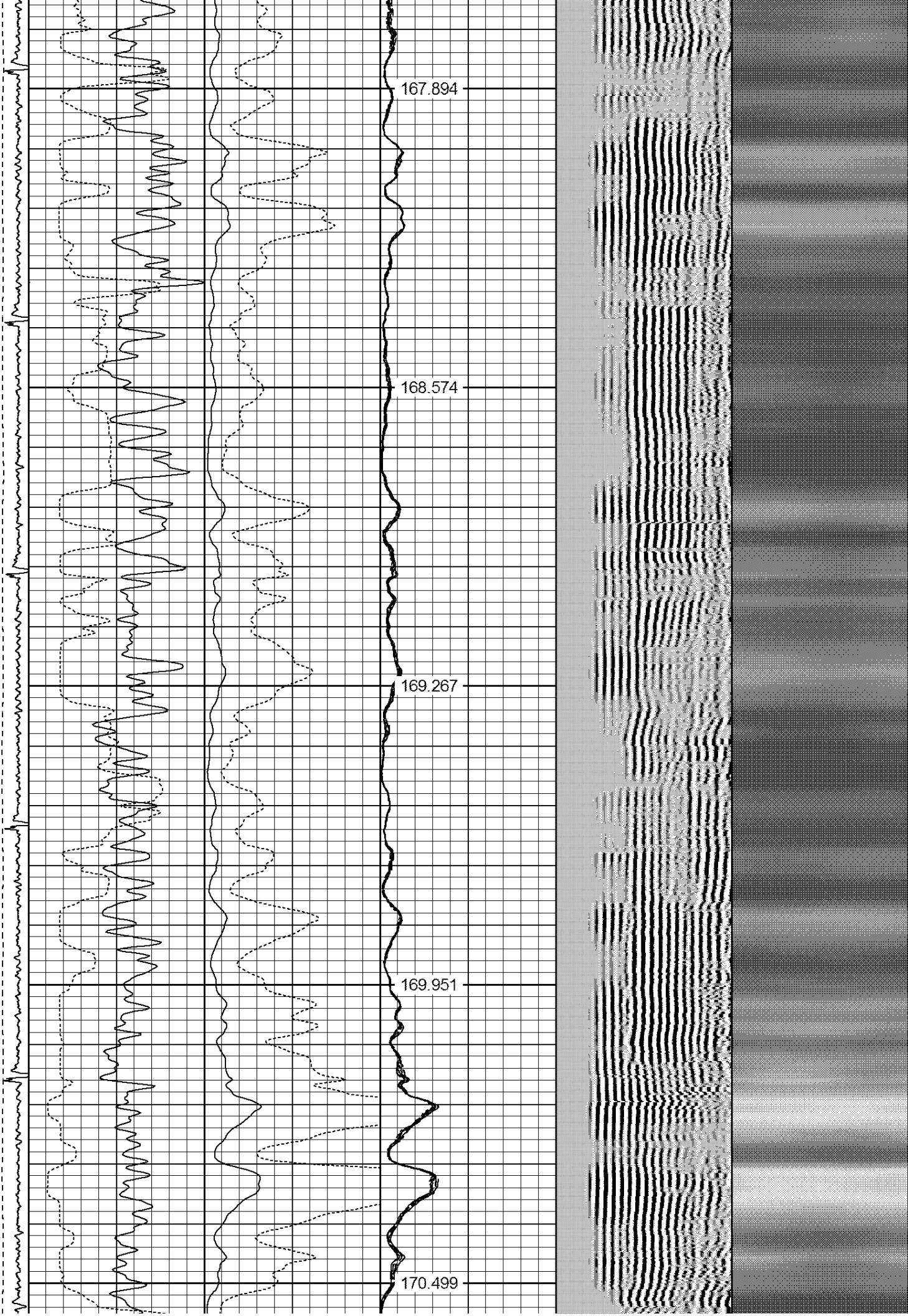
169.267

4300

169.951

4350

170.499



4400

171.133

4450

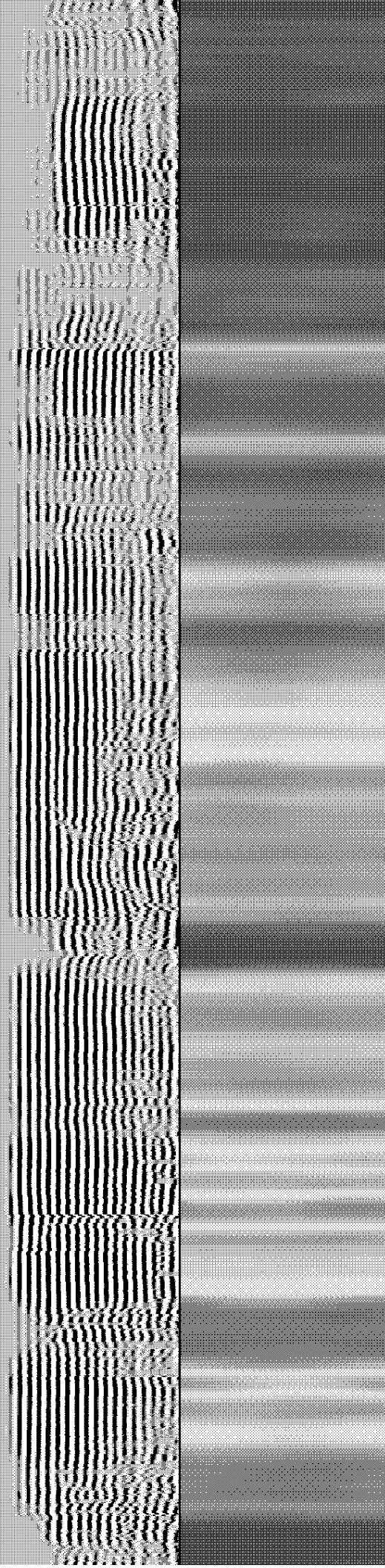
171.748

4500

172.392

4550

172.883



4600

173.466

4650

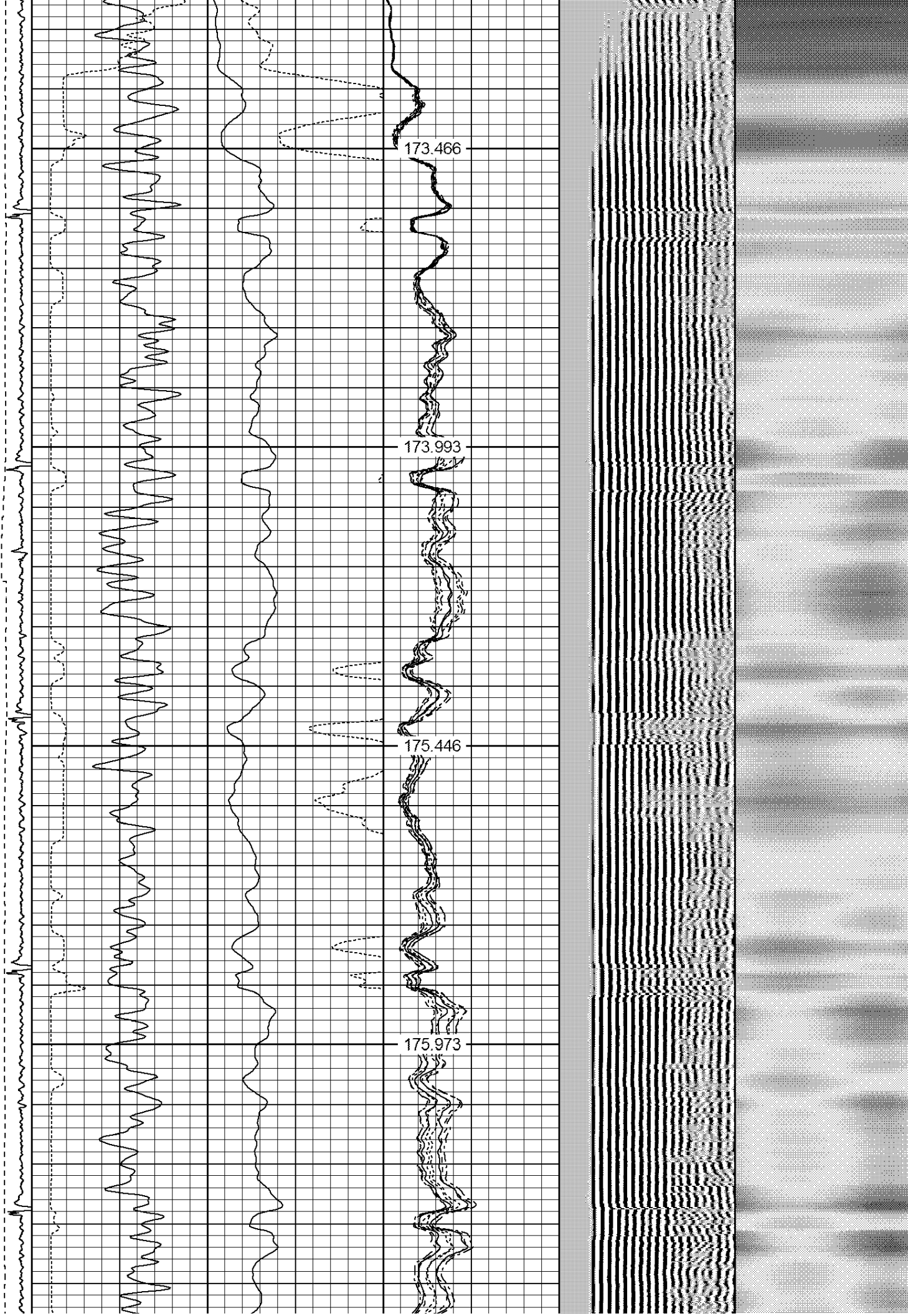
173.993

4700

175.446

4750

175.973



4800
4850
4900
4950
5000

176.528
177.124
177.593
178.239
178.643



5050

179.116

5100

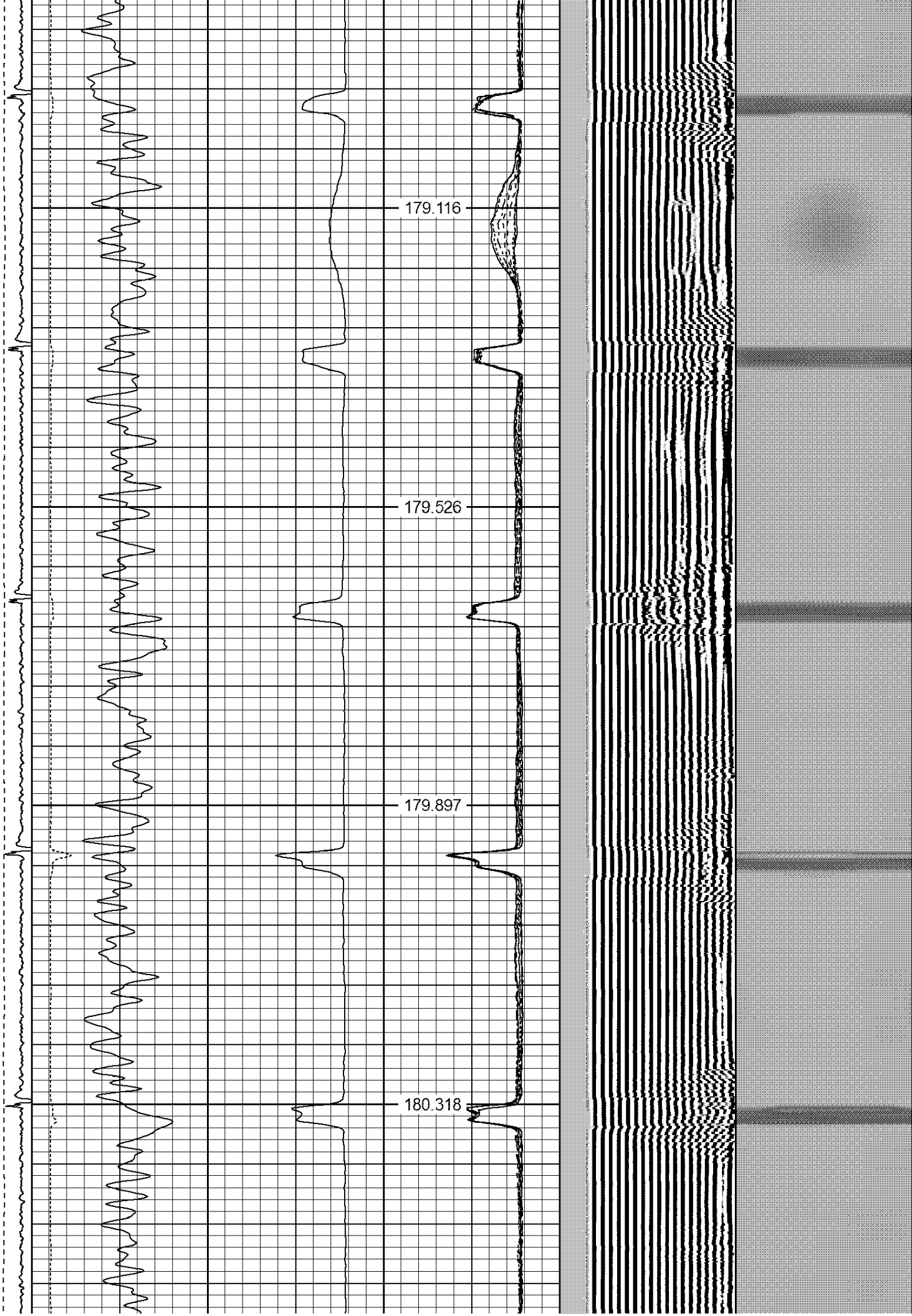
179.526

5150

179.897

5200

180.318



5250

180.677

5300

180.842

5350

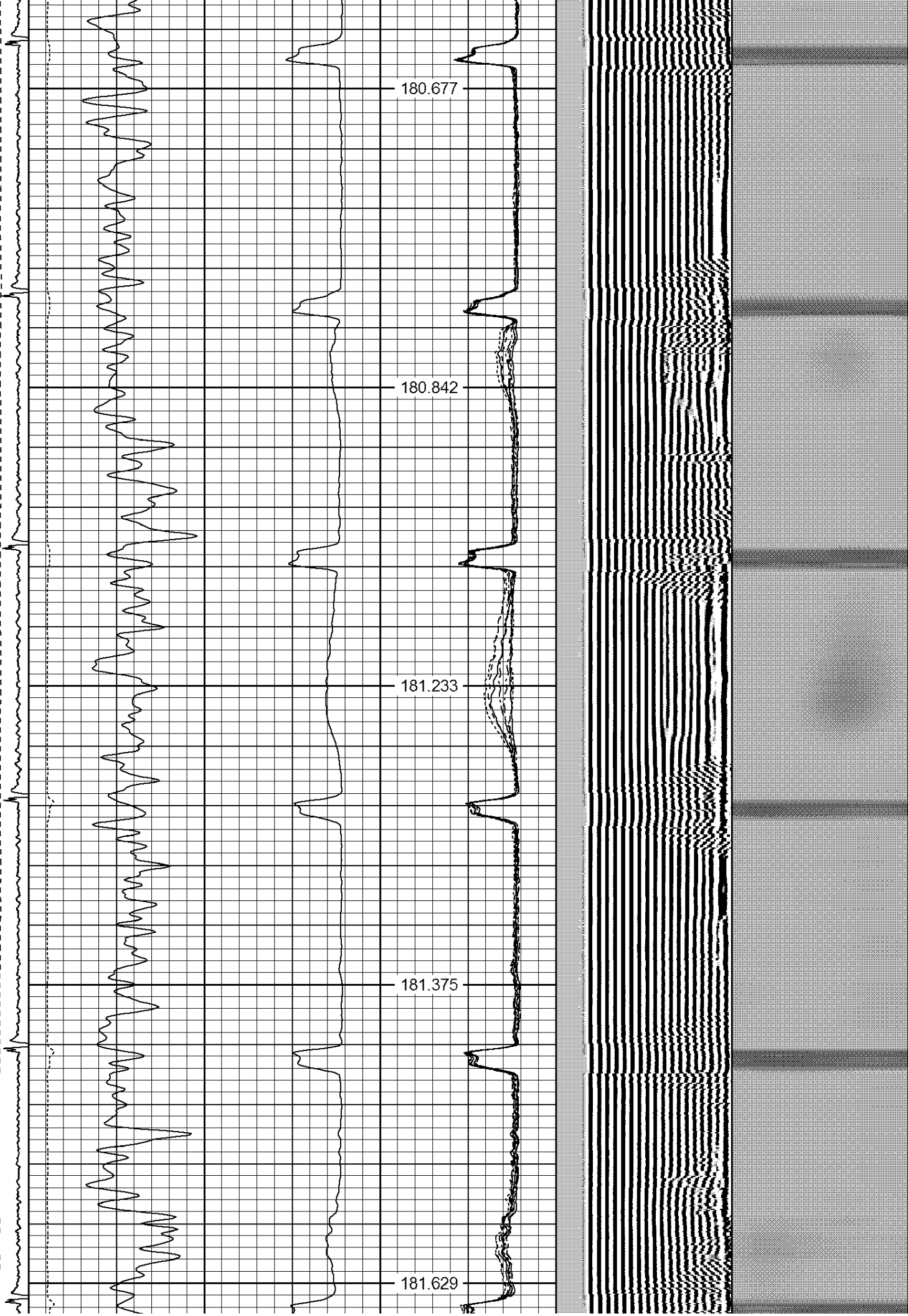
181.233

5400

181.375

5450

181.629



5500

181.842

5550

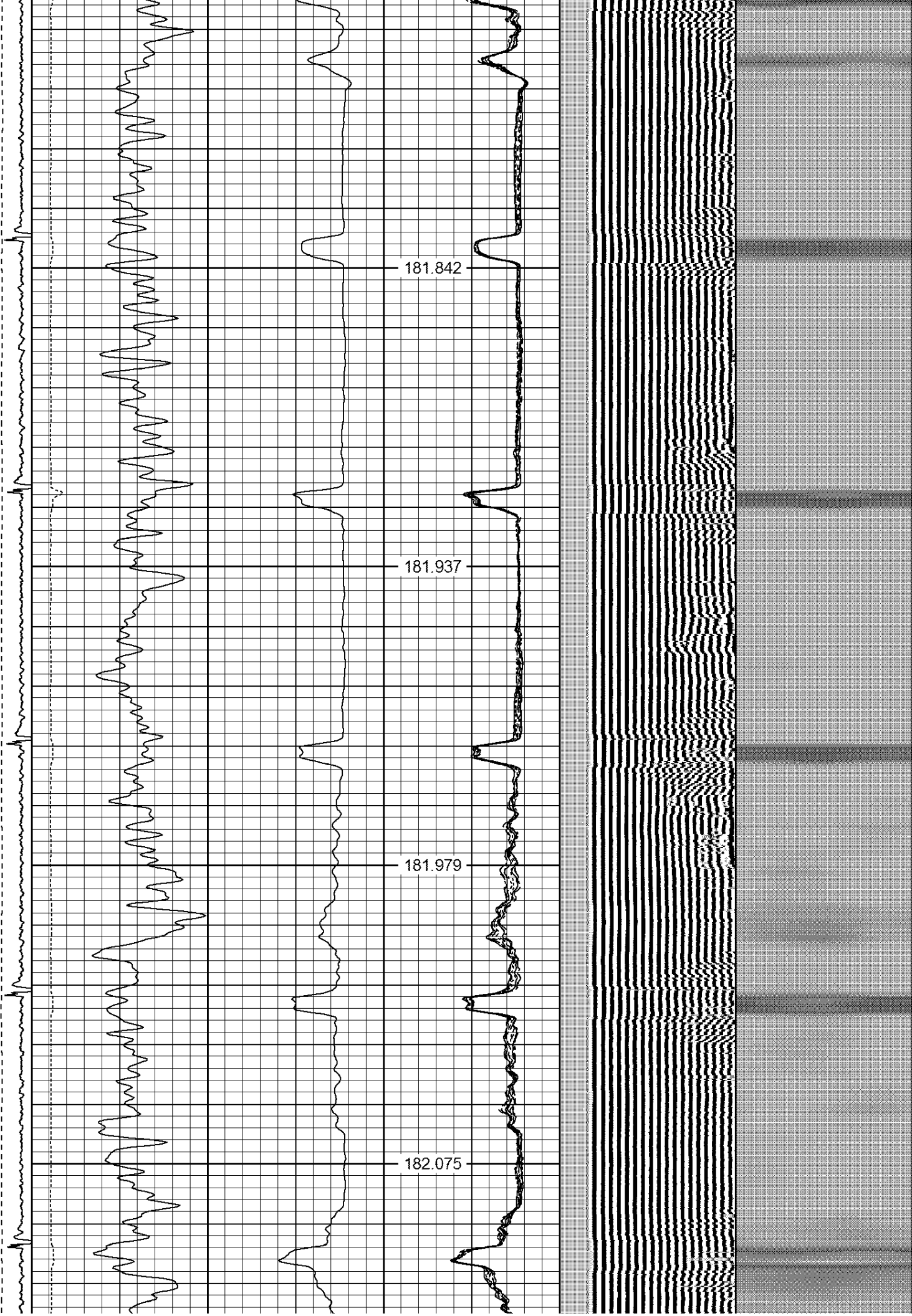
181.937

5600

181.979

5650

182.075



5700

182.039

5750

181.974

5800

181.795

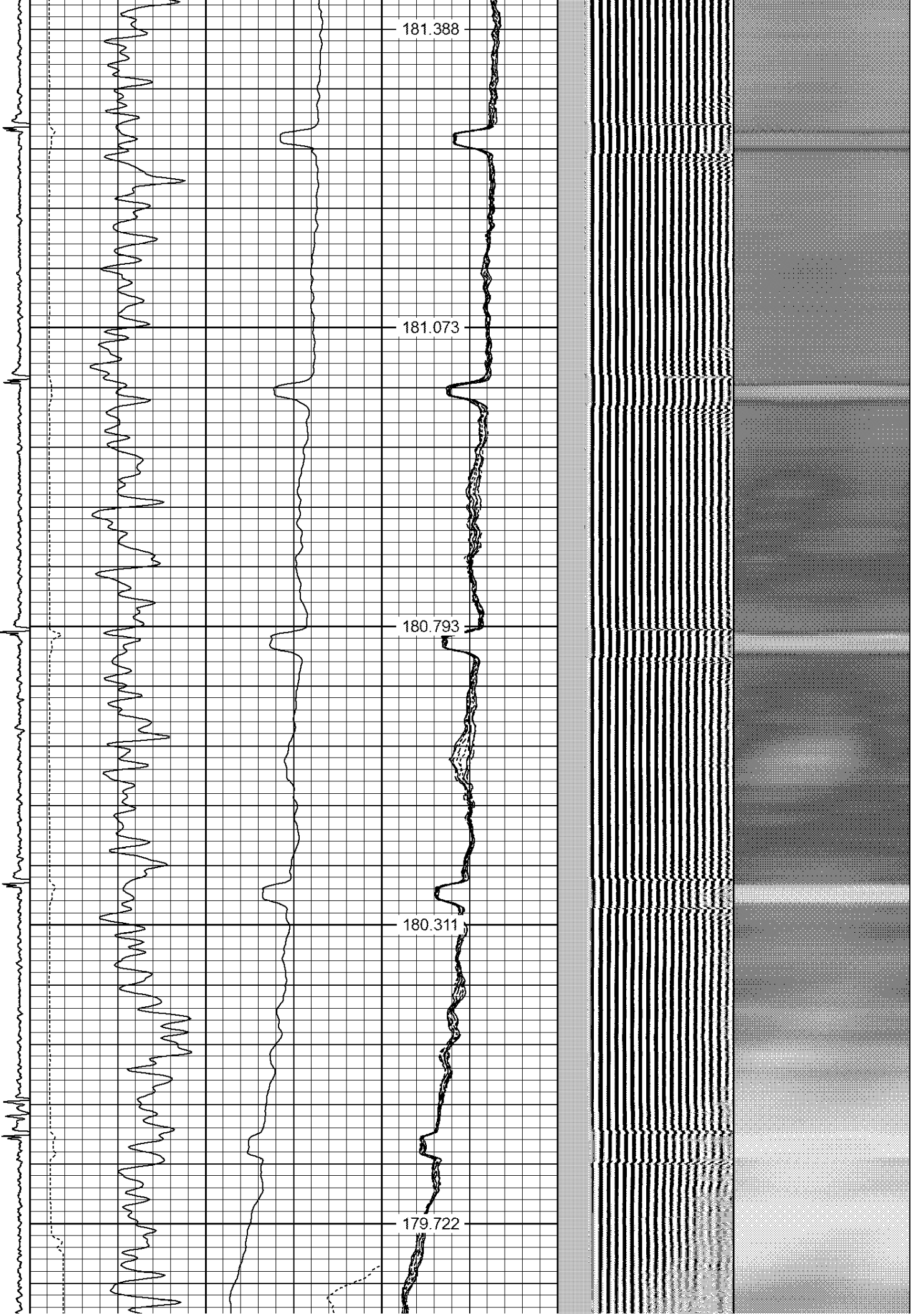
5850

181.695



5900
5950
6000
6050
6100

181.388
181.073
180.793
180.311
179.722



6150

179.126

6200

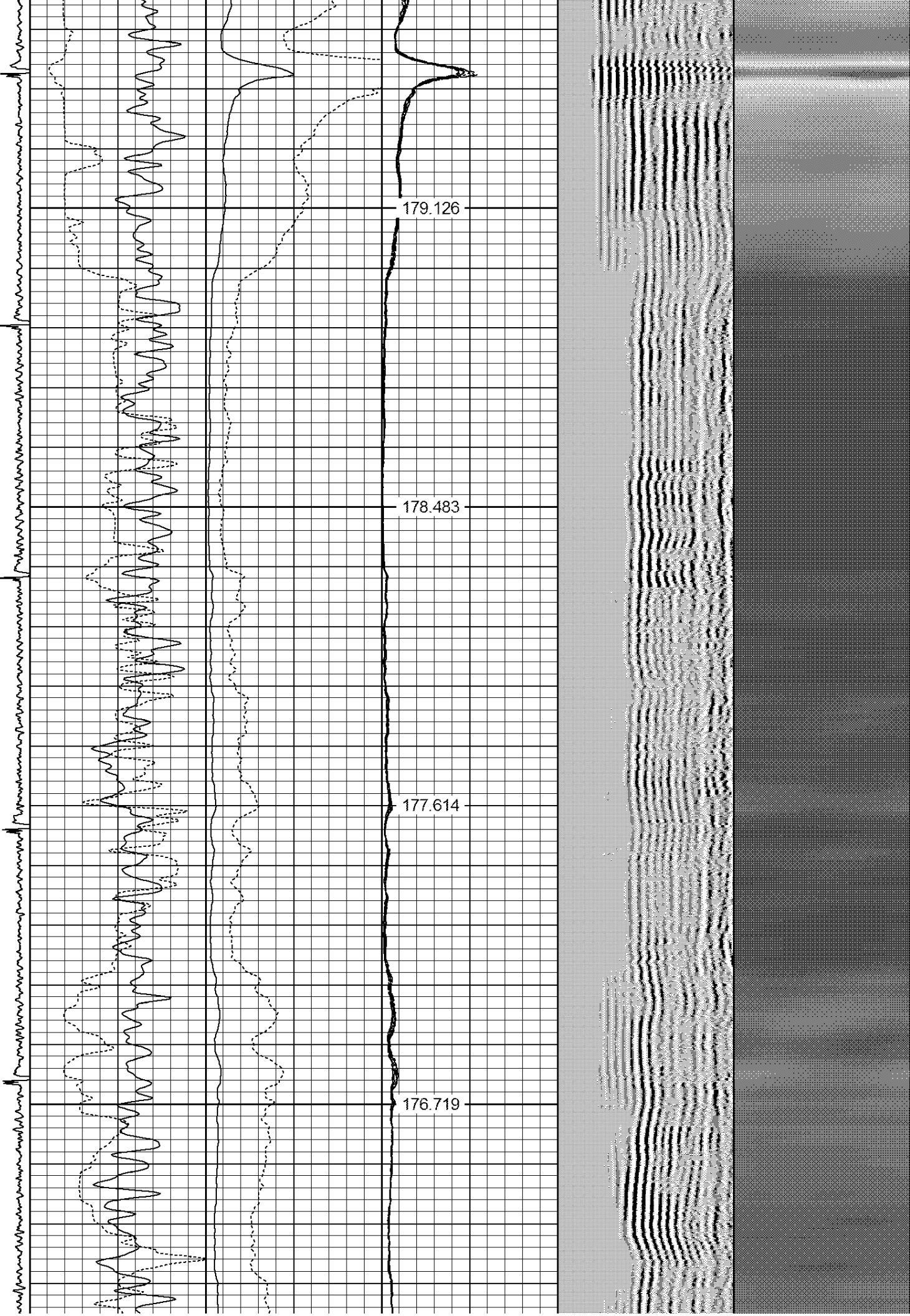
178.483

6250

177.614

6300

176.719



6350

175.808

6400

174.691

6450

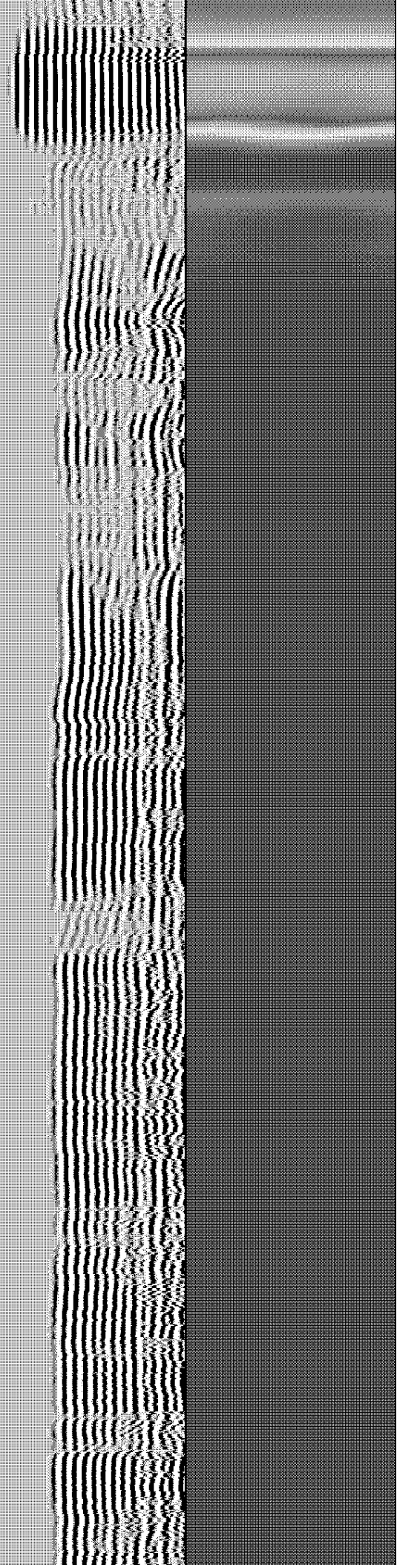
173.447

6500

172.107

6550

170.553



6600

168.89

6650

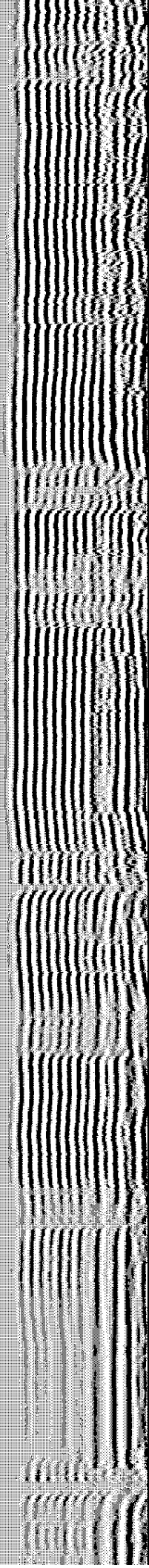
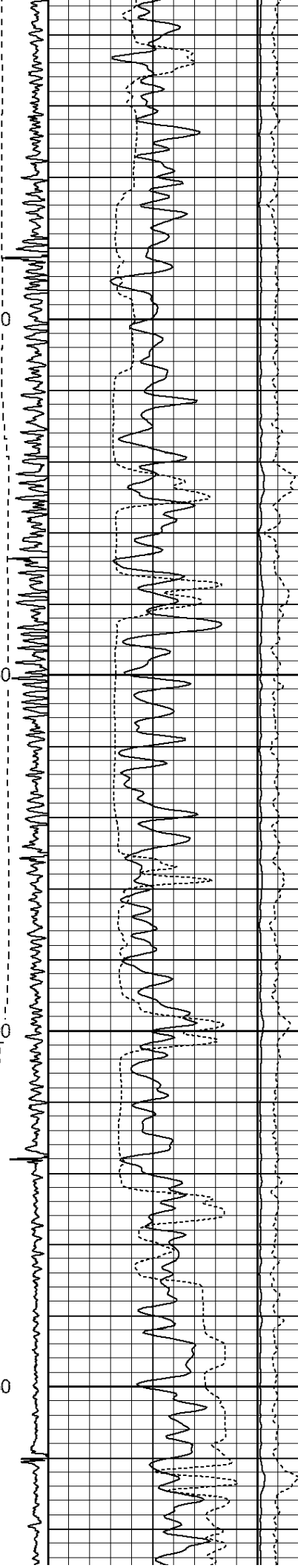
167.194

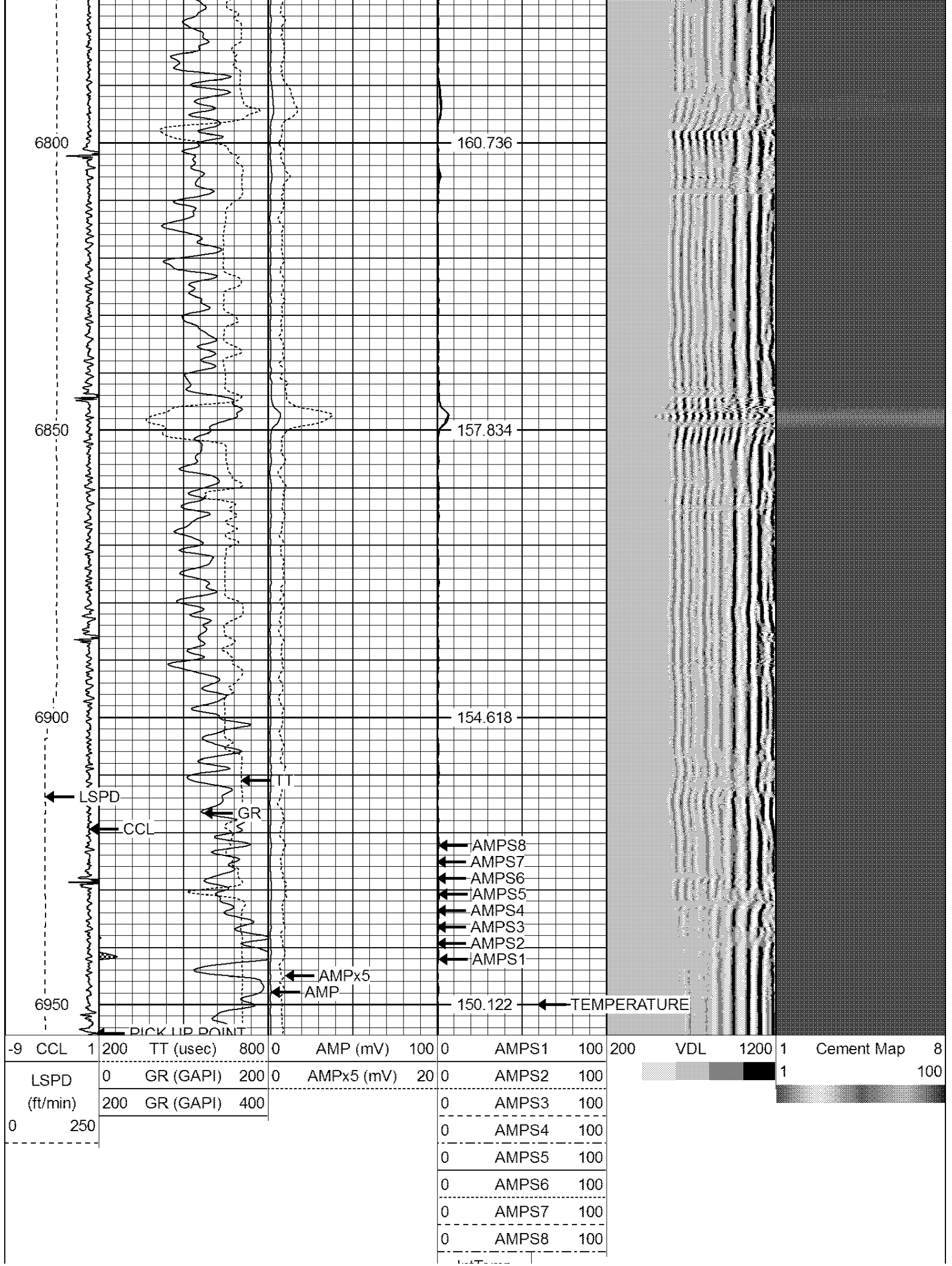
6700

165.413

6750

163.088





6800

160.736

6850

157.834

6900

154.618

6950

150.122

TEMPERATURE

LSPD

CCL

GR

AMPx5

AMP

- ← AMPS8
- ← AMPS7
- ← AMPS6
- ← AMPS5
- ← AMPS4
- ← AMPS3
- ← AMPS2
- ← AMPS1

PICK UP POINT

-9	CCL	1	200	TT (usec)	800	0	AMP (mV)	100	0	AMPS1	100	200	VDL	1200	1	Cement Map	8
	LSPD	0	GR (GAPI)	200	0	AMPx5 (mV)	20	0	AMPS2	100					1		100
	(ft/min)	200	GR (GAPI)	400					0	AMPS3	100						
0	250								0	AMPS4	100						
									0	AMPS5	100						
									0	AMPS6	100						
									0	AMPS7	100						
									0	AMPS8	100						

IntTemp
(degF)



Well Services
E - L I N E

Company NOBLE ENERGY INC.
Well CARLSON 15-29
Field WATTENBERG
County WELD
State COLORADO