

Final Reclamation Inspection

August 27, 2020

Operator: CRESTONE PEAK RESOURCES OPERATING LLC - 10633

Location ID: 431823

Inspection Document #: 697501951

Weld County, CO

SWNW Section 17 T3N R68W

Chris Binschus
Reclamation Specialist, COGCC



COLORADO
Oil & Gas Conservation
Commission

Department of Natural Resources

Inspection Photos
Location Name: JO Farms #0-4-17
Location ID: 431823

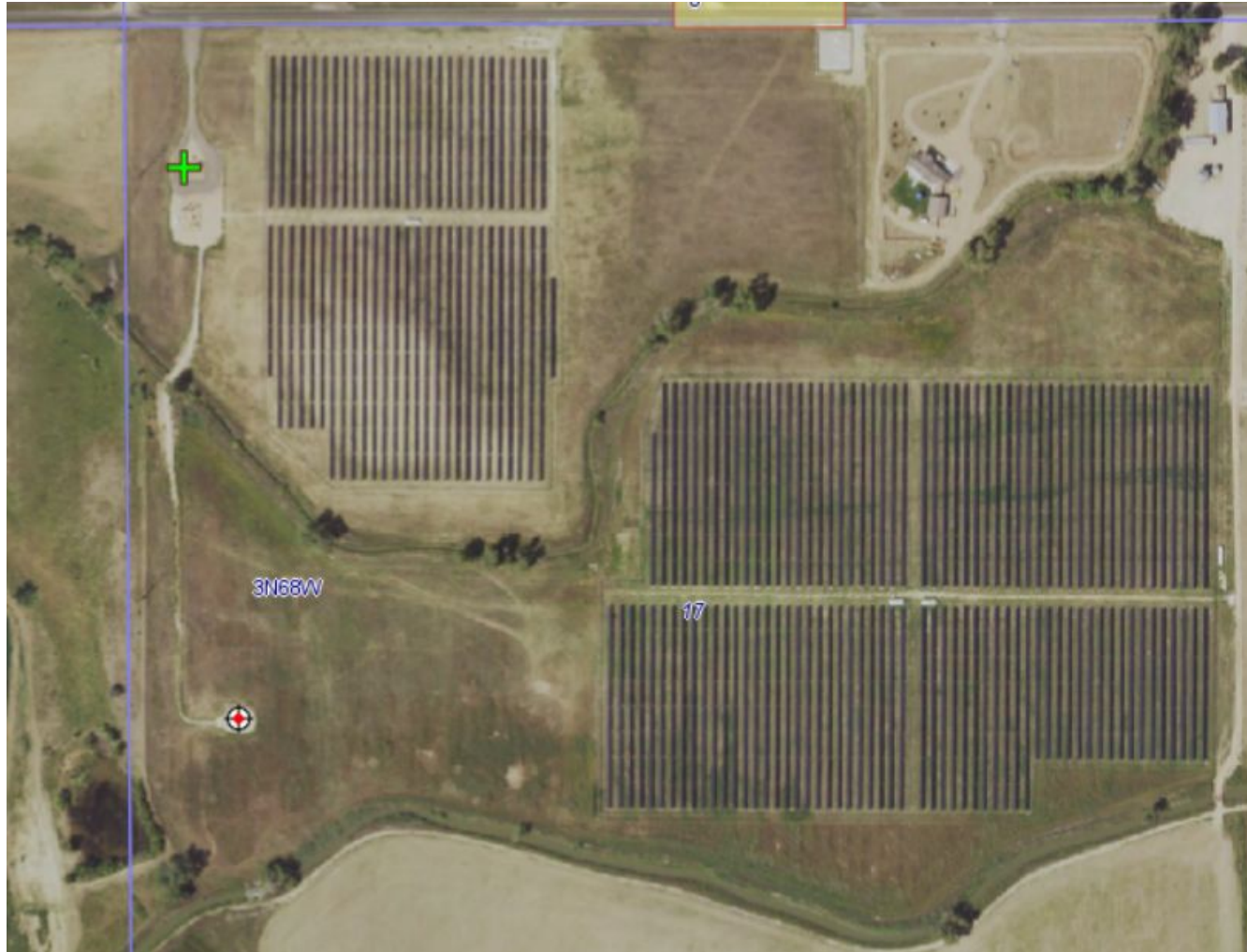


Photo 1. Aerial imagery taken 2017 using COGCC database. Imagery illustrates the associated offsite tank battery (green plus), the access road, and well location.

Inspection Photos
Location Name: JO Farms #0-4-17
Location ID: 431823



Photo 2. Photo taken from the associated offsite tank battery, facing North. Photo illustrates Operator has removed all equipment and has performed final reclamation activities. Reference area species, crested wheatgrass, were observed throughout the tank battery. The green foliage is Kochia/Russian thistle which appears to be recently mowed.

Inspection Photos
Location Name: JO Farms #0-4-17
Location ID: 431823



Photo 3. Photo taken from the associated offsite tank battery, facing South. See comments under Photo 2.

Inspection Photos
Location Name: JO Farms #0-4-17
Location ID: 431823



Photo 4. Photo taken from the associated offsite tank battery, facing East. Photo illustrates there is a new access road which is used to access the nearby solar farm.

Inspection Photos
Location Name: JO Farms #0-4-17
Location ID: 431823



Photo 5. Photo taken from the well location, facing East. Photo illustrates all equipment has been removed. Surface owner appears to be using portions of the well location for hay storage.

Inspection Photos
Location Name: JO Farms #0-4-17
Location ID: 431823



Photo 6. Photo taken from the well location, facing North. Photo illustrates the access road has not been reclaimed. Note: portion appear to be utilized to access two different solar farms.