

# Interim Reclamation and Stormwater Inspection

August 26, 2020

Operator: NOBLE ENERGY INC - #100322

Location ID: 432544

Inspection Document #: 697501943

Weld County, CO

NENE Section 23 T7N R63W

Chris Binschus  
Reclamation Specialist, COGCC

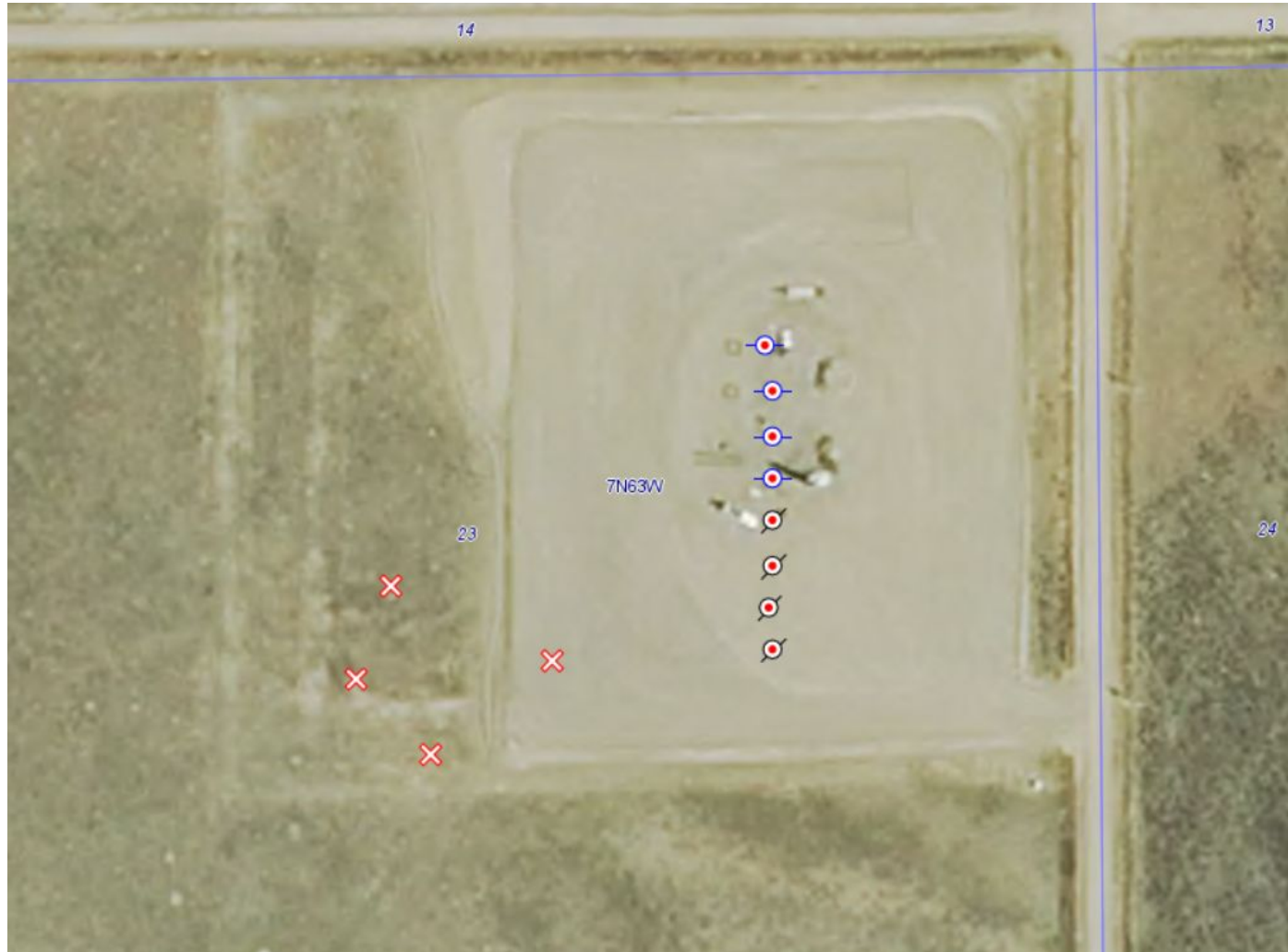


**COLORADO**

**Oil & Gas Conservation  
Commission**

Department of Natural Resources

Inspection Photos  
Location Name: Wahlert /AC23-69HN Pad  
Location ID: 432544



**Photo 1.** Aerial imagery from 2013 using COGCC database illustrates the location and surface disturbance. The “red x’s” are locations of a List B Colorado noxious weed, Scotch thistle, which has spread off location. Note: there were other Scotch thistle plants observed further to the west and south of the interim areas.

Inspection Photos  
Location Name: Wahlert /AC23-69HN Pad  
Location ID: 432544



**Photo 2.** Aerial imagery from 2017 using COGCC database illustrates the location and surface disturbance after interim reclamation. The “red x’s” are locations of a List B Colorado noxious weed, Scotch thistle, which has spread off location.



Inspection Photos  
Location Name: Wahlert /AC23-69HN Pad  
Location ID: 432544



**Photo 3.** Photo taken from the entrance of the location, facing South. Photo illustrates unmanaged List B Colorado noxious weeds, Scotch thistle, which has spread off location.



Inspection Photos  
Location Name: Wahlert /AC23-69HN Pad  
Location ID: 432544



**Photo 4.** Photo taken from the entrance of the location, facing North. See comments under Photo 3.

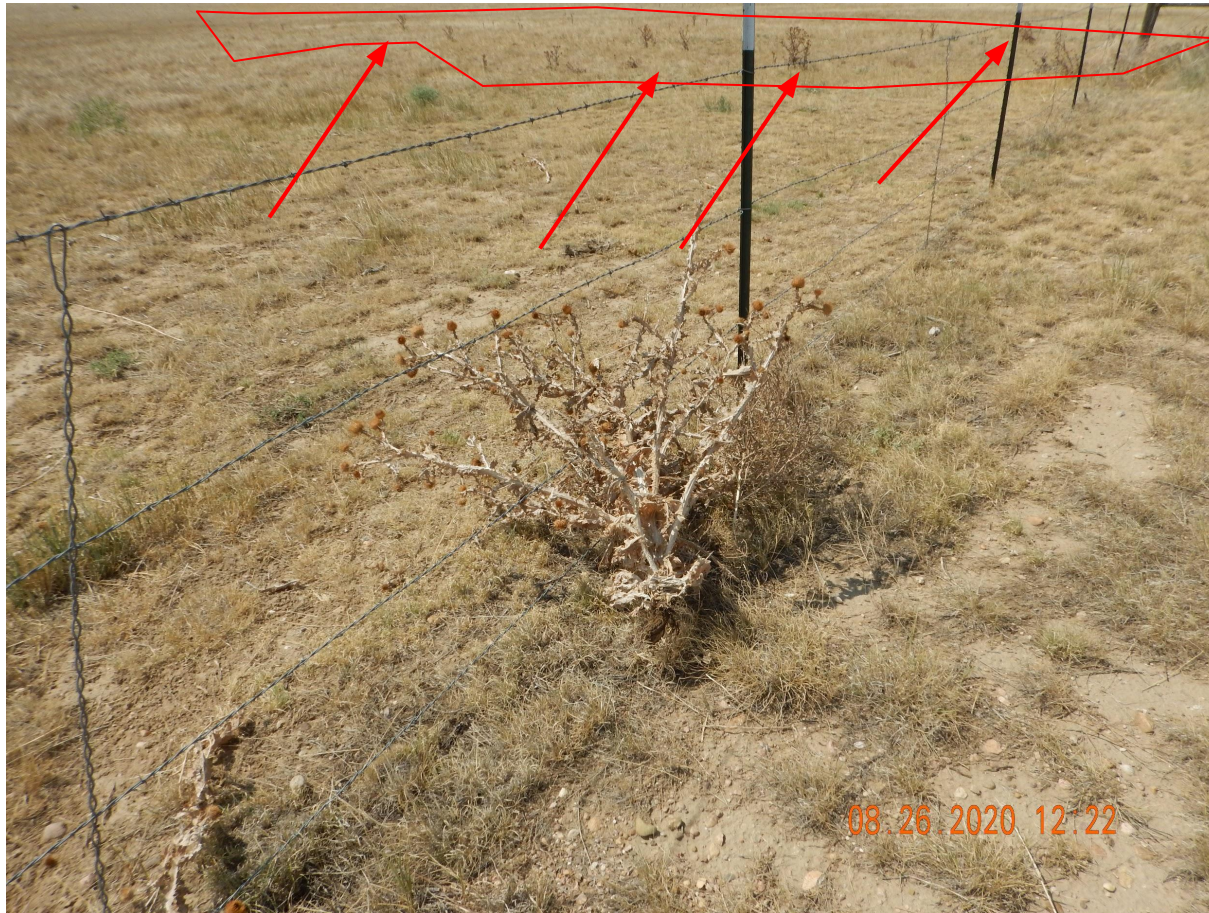
Inspection Photos  
Location Name: Wahlert /AC23-69HN Pad  
Location ID: 432544



**Photo 5.** Photo taken from the southern well pad, facing West. See comments under Photo 3.



Inspection Photos  
Location Name: Wahlert /AC23-69HN Pad  
Location ID: 432544



**Photo 6.** Photo taken from the southern well pad, facing West. Photo illustrates a plant which has broken off from the main stem and blowing like a tumbleweed.



Inspection Photos  
Location Name: Wahlert /AC23-69HN Pad  
Location ID: 432544



**Photo 7.** Photo taken from the southeastern well pad, facing West. Photo illustrates unmanaged List B Colorado noxious weeds, Scotch thistle, within the southern interim area.

Inspection Photos  
Location Name: Wahlert /AC23-69HN Pad  
Location ID: 432544



**Photo 8.** Photo taken from the southern interim area, facing South. Photo illustrates unmanaged List B Colorado noxious weeds, Scotch thistle, which have spread off location and beyond the interim reclamation areas.





**Photo 9.** Close up photo taken from an unmanaged List B Colorado noxious weed, Scotch thistle. Most of the Scotch thistle has already flowered and set seed. Photo illustrates viable seeds which remain within the flowering head.





**Photo 10.** Close up photo taken from an unmanaged List B Colorado noxious weed, Scotch thistle. Most of the Scotch thistle has already flowered and set seed. Photo illustrates all seeds have been dispersed.