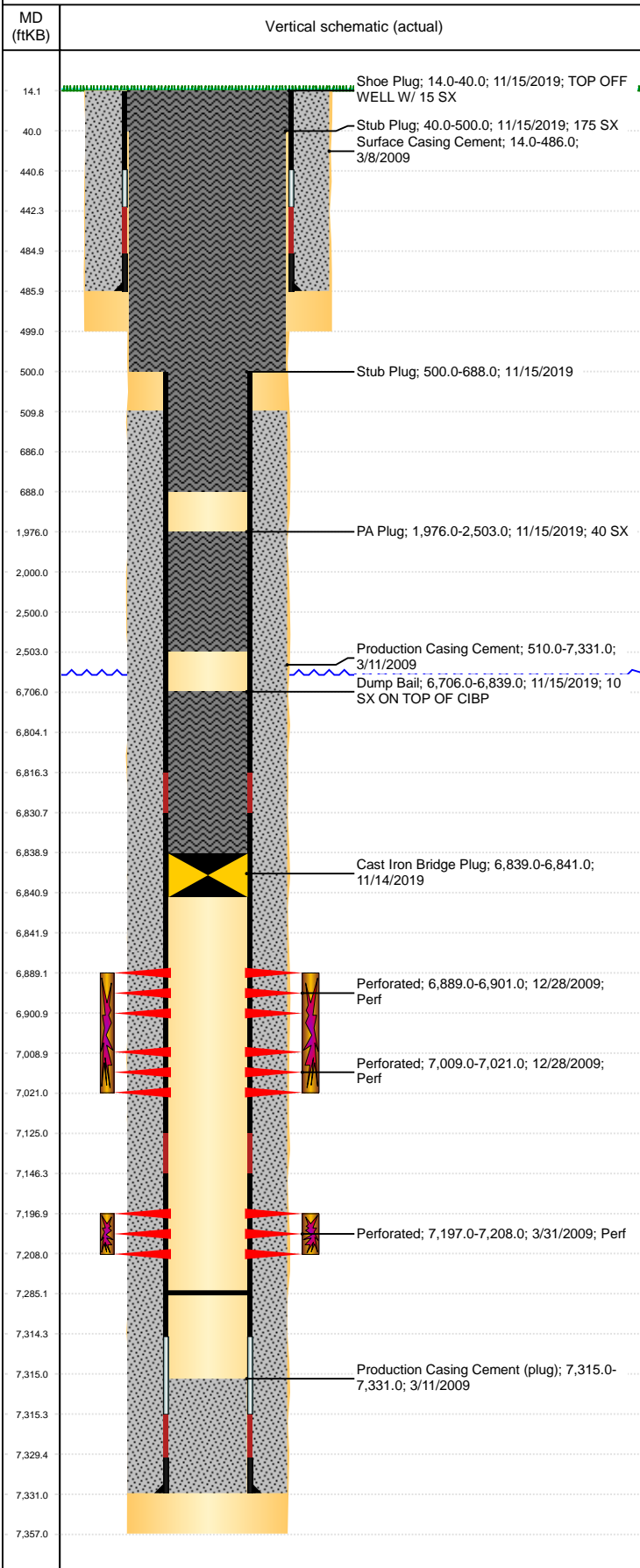


Well Name: ROACH N14-21

VERTICAL, ORIGINAL HOLE, 8/31/2020 2:51:32 PM



Well Header

API 05-123-29725	Business Unit DJ BASIN	District 15	Well Config VERTICAL
KB - GL / MSL (ft... 14.00	Spud Date 3/7/2009	P & A Date 3/26/2020	Well Production Status PA
SoRT Yes			

Comment
SRC P&A. 318Ae LOCATION

Surface Location (Congressional)

Qtr 3 NW	Qtr 4 SE	Section 14	Twonshp 5	Twonsh... N	Range 67	Rng E... W	Actual Latitude (°) 40.39939082	Actual Longitude (°) -104.85974529
-------------	-------------	---------------	--------------	----------------	-------------	---------------	------------------------------------	---------------------------------------

Wellbore Sections

Section Des	Size (in)	Act Top, MD (ftKB)	Act Btm, MD (ftKB)
SURFACE	12 1/4	14	499
PRODUCTION	7 7/8	499	7,357

Casing Strings

Csg Des	Run Date	OD (in)	Wt/Len (lb/ft)	Grade	Top, MD (ftKB)	MD (ftKB)
Surface	3/7/2009	8 5/8	24.00	J-55	14.0	486.0
Production	3/10/2009	4 1/2	11.60	M-80	14.0	7,331.0

Cement

Des	Start Date	Top (ftKB)	Btm (ftKB)
Surface Casing Cement	3/8/2009	14.0	486.0
Production Casing Cement	3/11/2009	510.0	7,331.0
Dump Bail	11/15/2019	6,706.0	6,839.0
PA Plug	11/15/2019	1,976.0	2,503.0
Stub Plug	11/15/2019	500.0	688.0
Stub Plug	11/15/2019	40.0	500.0
Shoe Plug	11/15/2019	14.0	40.0

Zone Statuses

Zone Name	Status Date	Status	Fluid Type	Job	Prod Method
NIOBRARA	12/31/2009	PR		DRILLING/COMPLETION - ORIGINAL, 3/6/2009...	
CODELL	12/31/2009	PR		DRILLING/COMPLETION - ORIGINAL, 3/6/2009...	

Perforation Data

Linked Zone	Bnch/Stg	Entered Shot Total	Top (ftKB)	Btm (ftKB)	Date
NIOBRARA, ORIGINAL HOLE	A	24	6,889.00	6,901.00	12/28/2009
NIOBRARA, ORIGINAL HOLE	B	24	7,009.00	7,021.00	12/28/2009
CODELL, ORIGINAL HOLE		44	7,197.00	7,208.00	3/31/2009

Stimulation Intervals

Zone	Start Date	Top (ftKB)	Btm (ftKB)
NIOBRARA, ORIGINAL HOLE	12/28/2009	6,889.0	7,021.0
CODELL, ORIGINAL HOLE	12/28/2009	7,197.0	7,208.0

Other In Hole

Run Date	Des	Make	OD (in)	Top (ftKB)	Btm (ftKB)
11/14/2019	Cast Iron Bridge Plug		4	6,839.0	6,841.0

Logs

Date	Type	Top, MD (ftKB)	Btm, MD (ftKB)
3/10/2009	Caliper/Comp. Density/Neutron/GR/SP/ML	2,490.0	7,337.0
3/10/2009	DIL/GR/SP/Caliper	487.0	7,337.0
3/18/2009	CBL/CCL/GR	300.0	7,320.0
6/15/2017	GYRO	0.0	7,100.0

Plug Back Total Depths

Date	Type	Com	Depth (ftKB)
4/7/2010	FILL		7,319.0
6/28/2013	FILL		7,285.0