

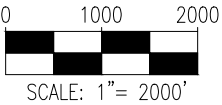
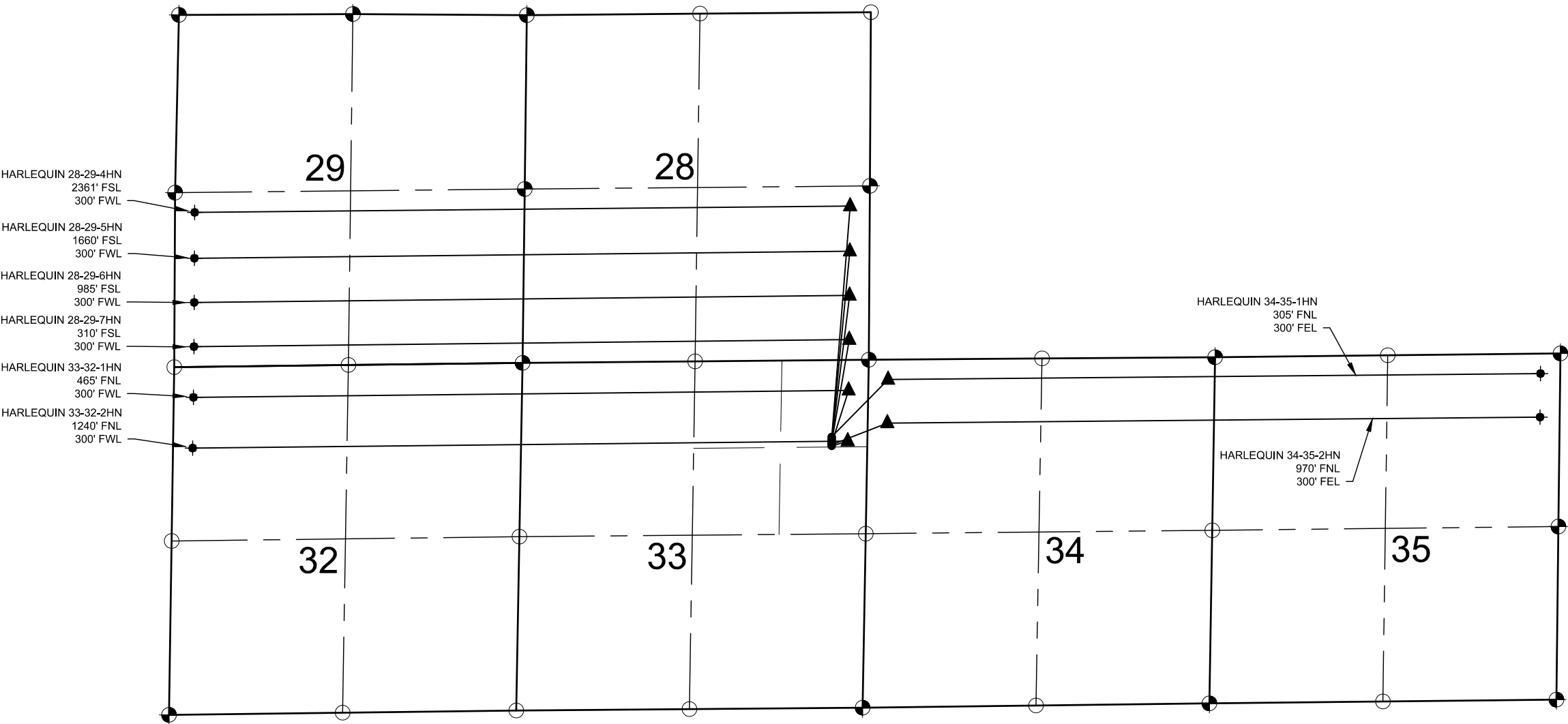
HARLEQUIN NORTH PAD
MULTI-WELL PLAN

NOTES:

1. THIS FIELD SURVEY CONFORMS TO THE MINIMUM STANDARDS SET BY THE COGCC, RULE NO. 215
2. ALL DISTANCES AND BEARINGS SHOWN HEREON ARE GROUND VALUES AS GPS MEASURED IN THE FIELD, WITH TIES TO WELLS MEASURED PERPENDICULAR TO LINES SHOWN HEREON. THIS LOW DISTORTION PROJECTION (LDP) IS BASED ON THE NORTH AMERICAN DATUM OF 1983, U.S. SURVEY FOOT WITH A LATITUDE ORIGIN OF 40.655085°N, A CENTRAL MERIDIAN LONGITUDE OF 104.086861°W, AND A SCALE FACTOR ON THE CENTRAL MERIDIAN OF 1.000232 (EXACT). THE LDP BASIS OF BEARINGS IS GEODETIC NORTH.
3. FIELD VERIFICATION OF MONUMENTS COMPLETED WITHIN 1 YEAR OF SIGNATURE DATE, UNLESS OTHERWISE NOTED.

NOTES:

- HARLEQUIN 33-32-1HN TO BE AT 1272' FNL & 544' FEL.
BOTTOM HOLE AT 465' FNL & 300' FWL, SEC. 32.
- HARLEQUIN 33-32-2HN TO BE AT 1312' FNL & 544' FEL.
BOTTOM HOLE AT 1240' FNL & 300' FWL, SEC. 32.
- HARLEQUIN 34-35-1HN TO BE AT 1172' FNL & 546' FEL.
BOTTOM HOLE AT 305' FNL & 300' FEL, SEC. 35.
- HARLEQUIN 34-35-2HN TO BE AT 1292' FNL & 544' FEL.
BOTTOM HOLE AT 970' FNL & 300' FEL, SEC. 35.
- HARLEQUIN 28-29-4HN TO BE AT 1192' FNL & 546' FEL.
BOTTOM HOLE AT 2361' FSL & 300' FWL, SEC. 29.
- HARLEQUIN 28-29-5HN TO BE AT 1212' FNL & 545' FEL.
BOTTOM HOLE AT 1660' FSL & 300' FWL, SEC. 29.
- HARLEQUIN 28-29-6HN TO BE AT 1232' FNL & 545' FEL.
BOTTOM HOLE AT 985' FSL & 300' FWL, SEC. 29.
- HARLEQUIN 28-29-7HN TO BE AT 1252' FNL & 545' FEL.
BOTTOM HOLE AT 310' FSL & 300' FWL, SEC. 29.



LEGEND

- = EXISTING MONUMENT
- = CALCULATED POSITION
- = PROPOSED WELL
- ◆ = BOTTOM HOLE
- ▲ = LANDING POINT
- ◆ = EXISTING WELL
- BHL = BOTTOM HOLE



8620 Wolff Court
Westminster, CO 80031
(303) 928-7128
www.ascentgeomatics.com

FIELD DATE:
12-13-17

DRAWING DATE:
06-11-20

BY:
CSG

CHECKED:
IJM

WELL NAME:
HARLEQUIN NORTH PAD

SURFACE LOCATION:
NE 1/4 NE 1/4 SEC. 33, T8N, R61W, 6TH P.M.
WELD COUNTY, COLORADO

PREPARED FOR:

