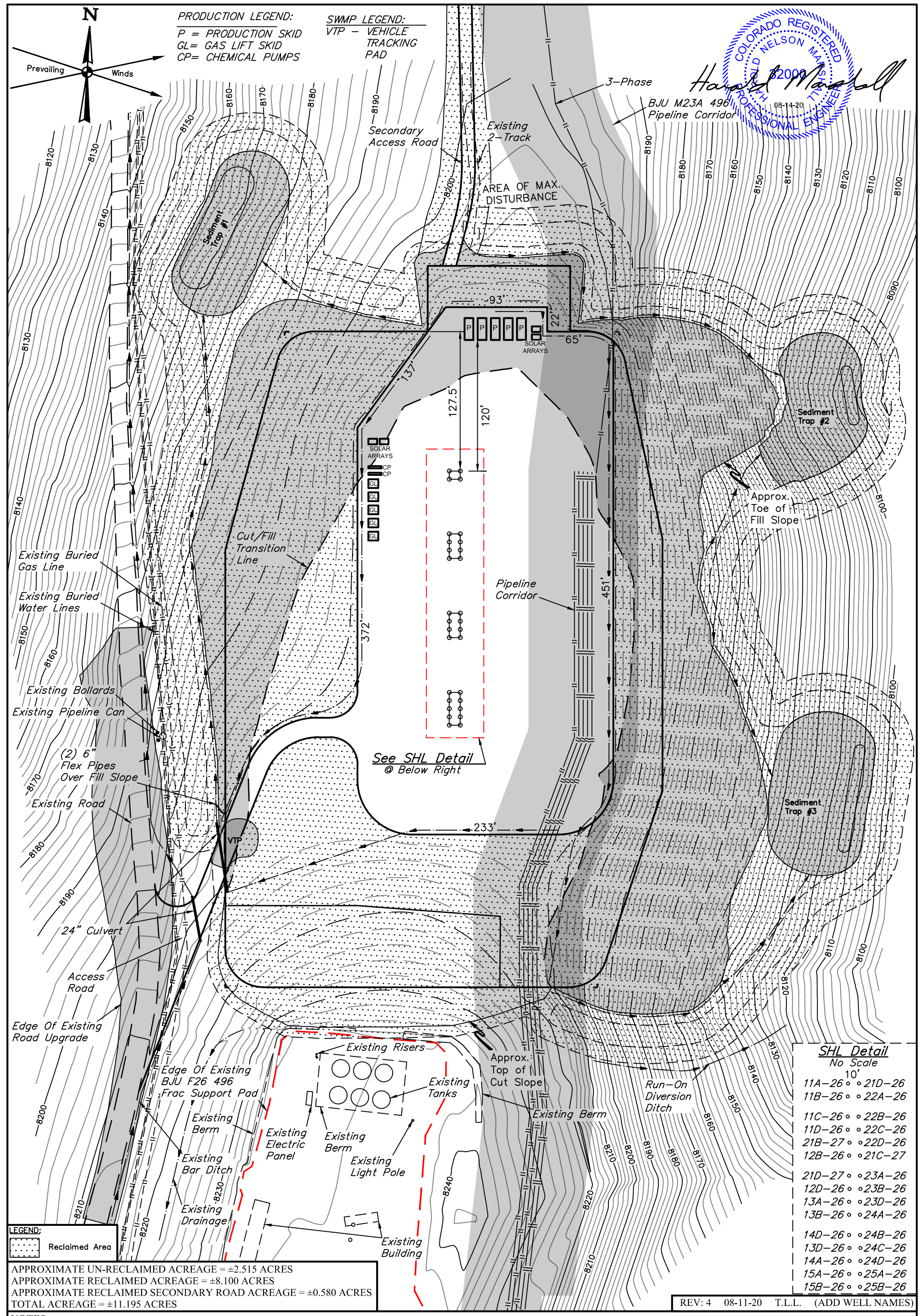
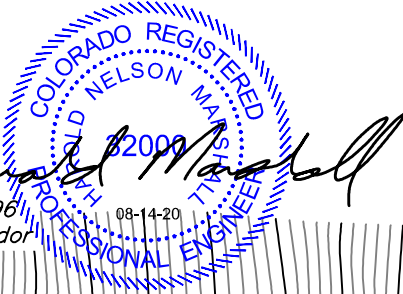


PRODUCTION LEGEND:
 P = PRODUCTION SKID
 GL = GAS LIFT SKID
 CP = CHEMICAL PUMPS

SWMP LEGEND:
 VTP - VEHICLE TRACKING PAD



See SHL Detail @ Below Right

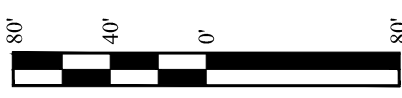
SHL Detail
 No Scale
 10'

11A-26	•	21D-26
11B-26	•	22A-26
11C-26	•	22B-26
11D-26	•	22C-26
21B-27	•	22D-26
12B-26	•	21C-27
21D-27	•	23A-26
12D-26	•	23B-26
13A-26	•	23D-26
13B-26	•	24A-26
14D-26	•	24B-26
13D-26	•	24C-26
14A-26	•	24D-26
15A-26	•	25A-26
15B-26	•	25B-26

LEGEND:
 Reclaimed Area

APPROXIMATE UN-RECLAIMED ACREAGE = ±2.515 ACRES
 APPROXIMATE RECLAIMED ACREAGE = ±8.100 ACRES
 APPROXIMATE RECLAIMED SECONDARY ROAD ACREAGE = ±0.580 ACRES
 TOTAL ACREAGE = ±11.195 ACRES

NOTES:
 • Contours shown at 2' intervals.



REV: 4 08-11-20 T.L.L. (ADD WELL NAMES)

Caerus Oil & Gas LLC

BJU B26 496 PAD
 NE 1/4 NW 1/4, SECTION 26, T4S, R96W, 6th P.M.
 GARFIELD COUNTY, COLORADO

SURVEYED BY	DAYTON SLAUGH, K.H.	03-09-20	SCALE
DRAWN BY	T.L.L.	04-15-20	1" = 80'
INTERIM RECLAMATION PRODUCTION SCHEMATIC			FIGURE #4



UELS, LLC
 Corporate Office * 85 South 200 East
 Vernal, UT 84078 * (435) 789-1017