



PHOTO: VIEW OF PAD AREA

CAMERA ANGLE: NORTHERLY



PHOTO: VIEW FROM BEGINNING OF PROPOSED ACCESS

CAMERA ANGLE: NORTHEASTERLY

Caerus Oil & Gas LLC

BJU N23 496 CDP PAD
SE 1/4 SW 1/4, SECTION 23, T4S, R96W, 6th P.M.
NE 1/4 NW 1/4, SECTION 26, T4S, R96W, 6th P.M.
GARFIELD COUNTY, COLORADO

TAKEN BY	DENNIS PETTY, C.R.	05-13-20	
DRAWN BY	T.L.L.	07-23-20	
LOCATION PHOTOS			PHOTO 1



UELS, LLC
 Corporate Office * 85 South 200 East
 Vernal, UT 84078 * (435) 789-1017



PHOTO: VIEW OF PAD AREA

CAMERA ANGLE: NORTHERLY



PHOTO: VIEW OF PAD AREA

CAMERA ANGLE: SOUTHERLY

Caerus Oil & Gas LLC

BJU N23 496 CDP PAD
SE 1/4 SW 1/4, SECTION 23, T4S, R96W, 6th P.M.
NE 1/4 NW 1/4, SECTION 26, T4S, R96W, 6th P.M.
GARFIELD COUNTY, COLORADO

TAKEN BY	DENNIS PETTY, C.R.	05-13-20	
DRAWN BY	T.L.L.	07-23-20	
LOCATION PHOTOS			PHOTO 2



UELS, LLC
 Corporate Office * 85 South 200 East
 Vernal, UT 84078 * (435) 789-1017



PHOTO: VIEW OF PAD AREA

CAMERA ANGLE: EASTERLY

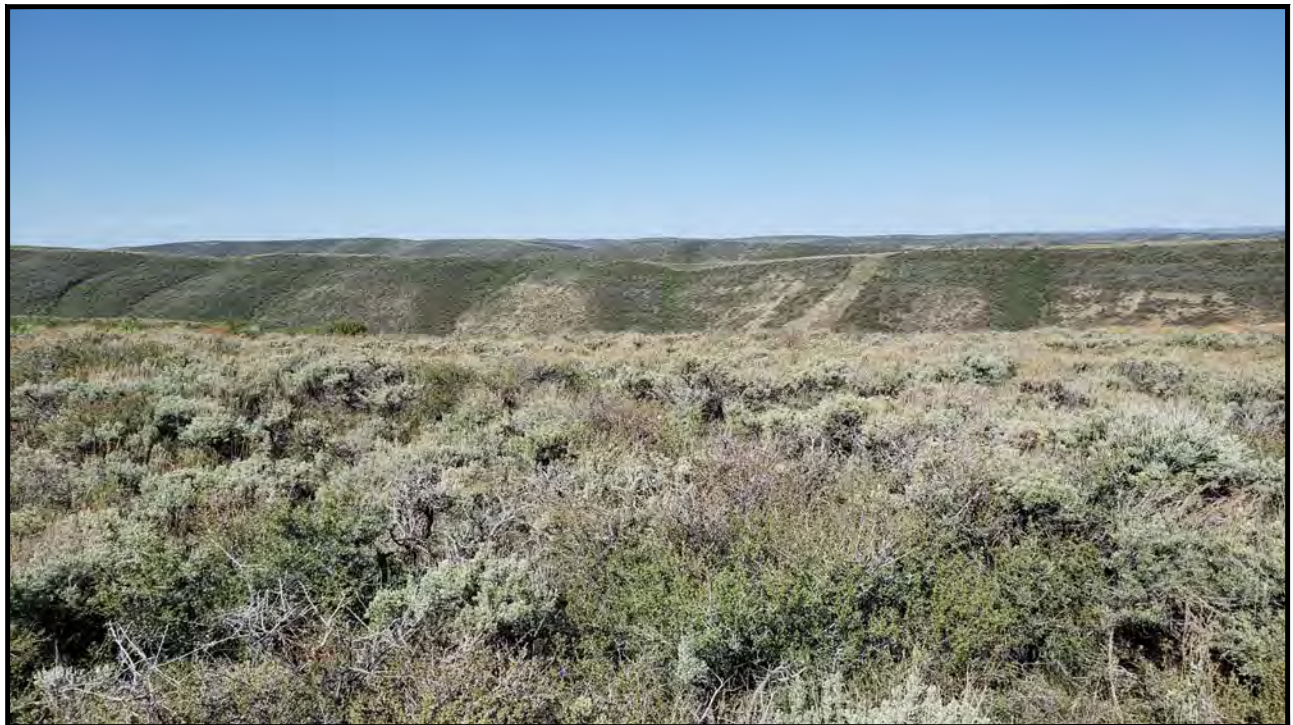


PHOTO: VIEW OF PAD AREA

CAMERA ANGLE: WESTERLY

Caerus Oil & Gas LLC

BJU N23 496 CDP PAD
SE 1/4 SW 1/4, SECTION 23, T4S, R96W, 6th P.M.
NE 1/4 NW 1/4, SECTION 26, T4S, R96W, 6th P.M.
GARFIELD COUNTY, COLORADO

TAKEN BY	DENNIS PETTY, C.R.	05-13-20	
DRAWN BY	T.L.L.	07-23-20	
LOCATION PHOTOS			PHOTO 3



UELS, LLC
 Corporate Office * 85 South 200 East
 Vernal, UT 84078 * (435) 789-1017